

# **Buncombe County Land Conservation:**

## **December 2004 Report**

**Kathryn R. Gubista, PhD**  
*Land Conservation GIS Specialist*



# Land Conservation: Objectives

- **Inventory of Protected Lands**
- **Inventory of High Priority Lands**
- **Promote Fundraising**



# GIS Mapping

- **Geographic Information Systems**

  - Data management tool**

- **Data Sources**

  - USGS – digital elevation maps (DEMs)**

  - Buncombe County – land parcels**



# Digital Elevation Maps

- U.S. Geological Survey maps
- GIS data depot website
- SDTS format
- 24K (1:24000 scale maps)
- 10 meter resolution
- UTM coordinates (NAD 27 datum)
- Mosaic of 23 DEMs

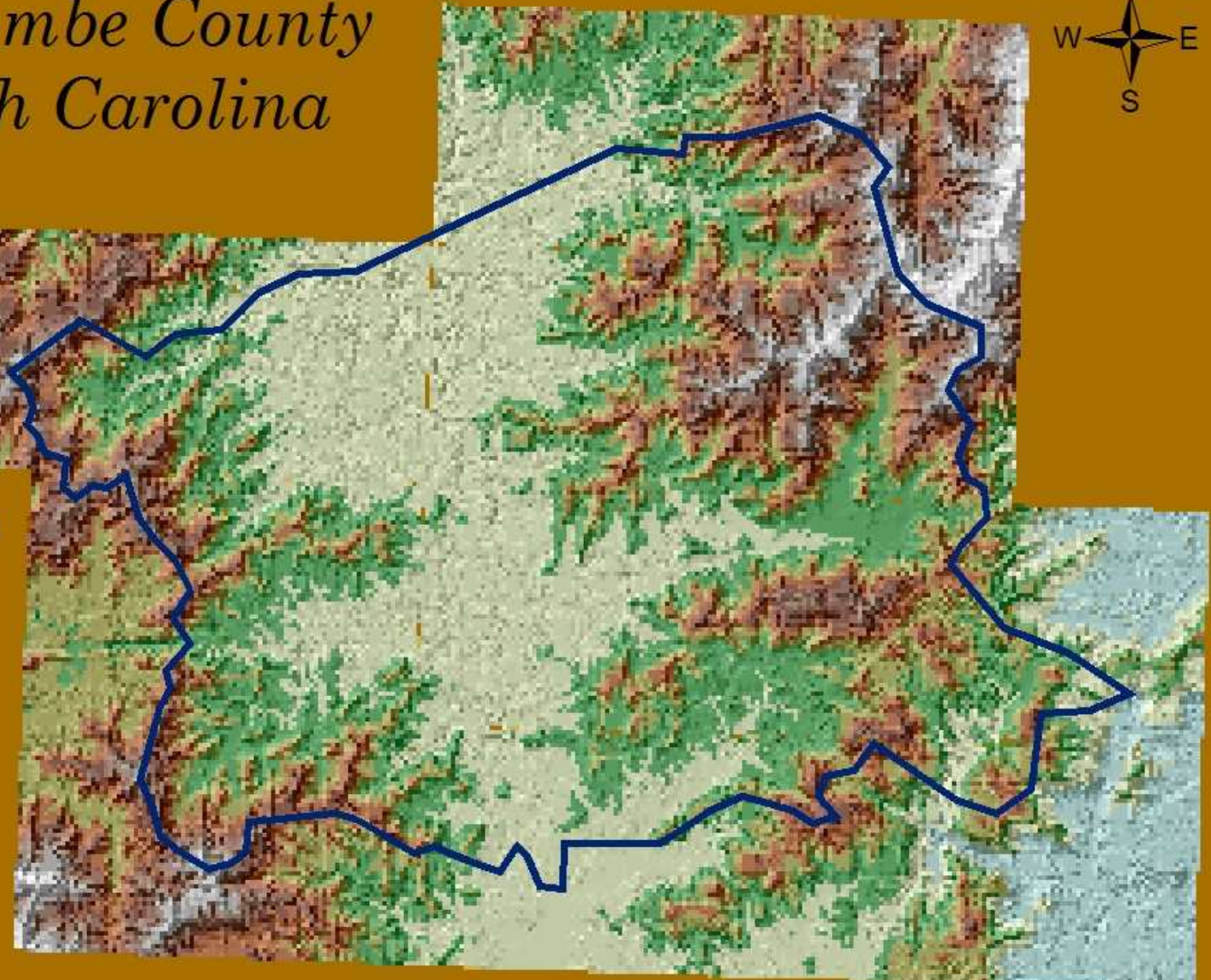
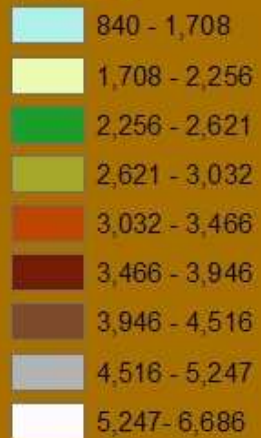


# *Buncombe County North Carolina*



## Buncombe DEM

<VALUE>



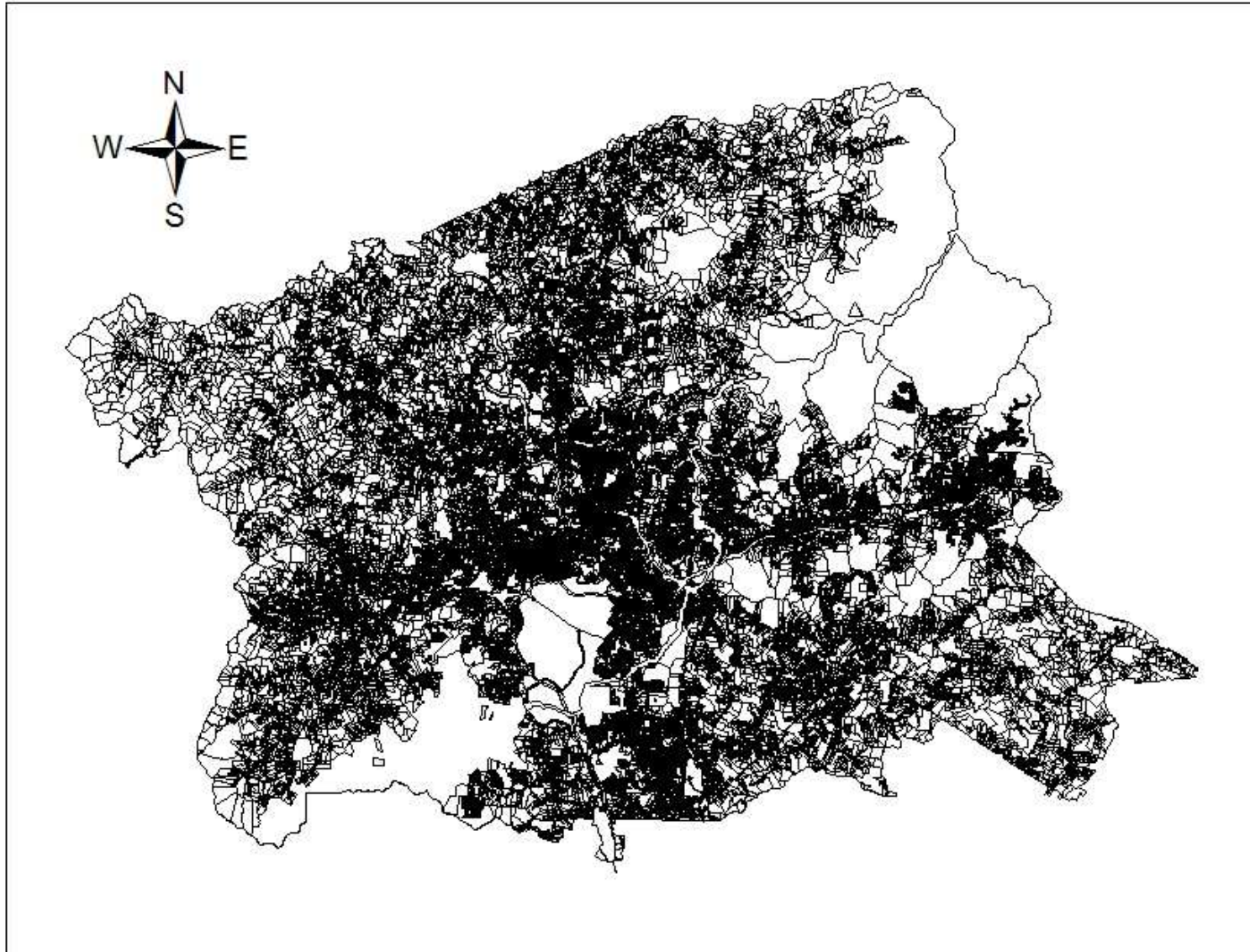
# Buncombe Parcels Data

- Digitized County Parcels Data
- County Tax Office
- 107,168 individual parcels
- Owners, PIN #, acreage, land value



---

# Buncombe County Parcels



# **Land Conservation:** **Objective #1**

## **Inventory of Protected Lands**






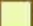







# Map #1 Protected Areas



## Legend

### Buncombe DEM

<VALUE>

	840 - 1,708
	1,708 - 2,256
	2,256 - 2,621
	2,621 - 3,032
	3,032 - 3,466
	3,466 - 3,946
	3,946 - 4,516
	4,516 - 5,247
	5,247 - 6,686

61,000 30,500 0 61,000 Feet

Kathryn R. Gubista, PhD September 2004

# Buncombe County Lands

Total = 422,208 acres

**Conserved = 50,382 acres**

12 % of the County's land

5 parcels account for 94%

37\* parcels account for 6%

\*average = 47 acres



# **Land Conservation:**

## **Objective #2**

### **Inventory of High Priority Lands**



# Priority Lands

- Large Parcels (100+ acres)
- Ridge Tops / Highlands
- Near Waterways
- Wetlands
- Farmlands
- Adjacent to Protected Areas
- Ecologically Sensitive Areas



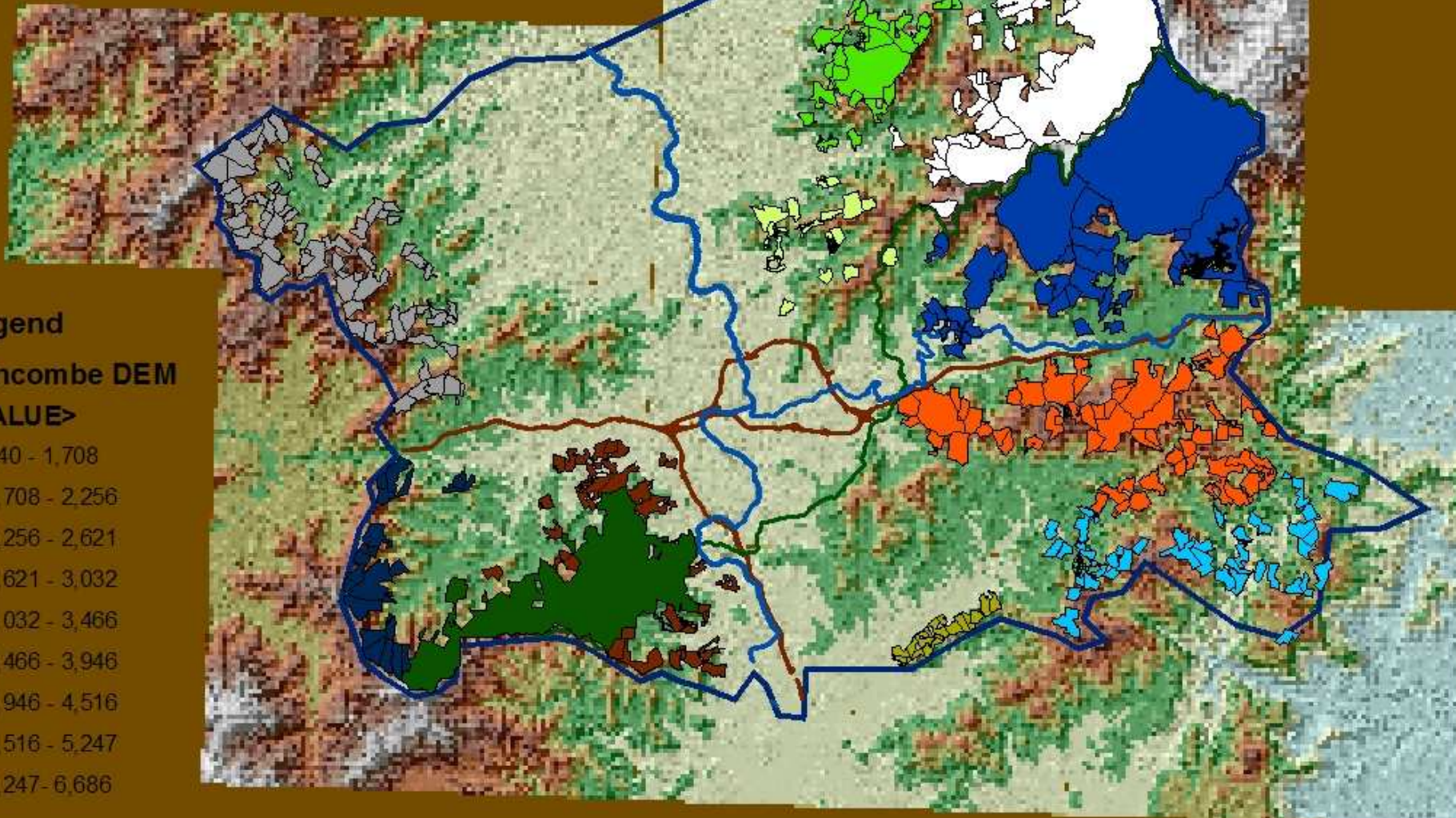
# Priority Lands

- **Large Parcels (100+ acres)**
- **Ridge Tops / Highlands**
- **Adjacent to Protected Areas**
- **Ecologically Sensitive Areas**



# Map #2


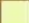







## Conservation Focus Areas & Farms



### Legend

#### Buncombe DEM

<VALUE>

	840 - 1,708
	1,708 - 2,256
	2,256 - 2,621
	2,621 - 3,032
	3,032 - 3,466
	3,466 - 3,946
	3,946 - 4,516
	4,516 - 5,247
	5,247 - 6,686

61,000 30,500 0 61,000 Feet

Kathryn R. Gubista, PhD September 2004

# Conservation Focus Areas

1. Craggy Mountains
2. Little Pisgah Mountain
3. Newfound Mountains
4. Pisgah Mountain
5. Bent Creek
6. Swannanoa Mountains
7. Okoboji Wilderness
8. Young Life – Brittain Mountain



# Conservation Focus Areas

**Total = ~113,000 acres**

**Number of parcels = 319**

**Minimum size = 100 acres**

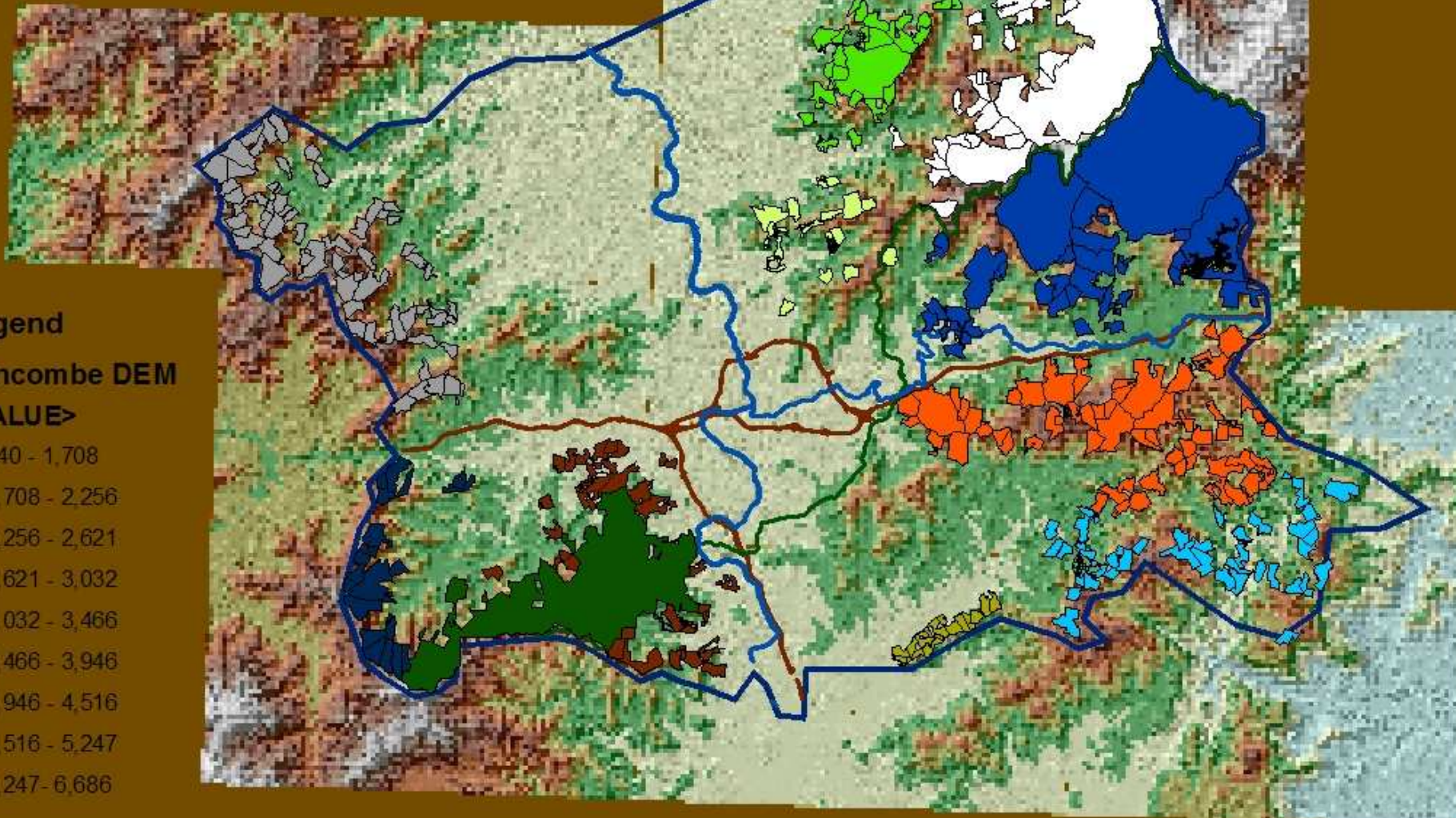
**26% of the County's land**





# Map #2










## Conservation Focus Areas & Farms



### Legend

#### Buncombe DEM

<VALUE>

-  840 - 1,708
-  1,708 - 2,256
-  2,256 - 2,621
-  2,621 - 3,032
-  3,032 - 3,466
-  3,466 - 3,946
-  3,946 - 4,516
-  4,516 - 5,247
-  5,247 - 6,686

61,000 30,500 0 61,000 Feet

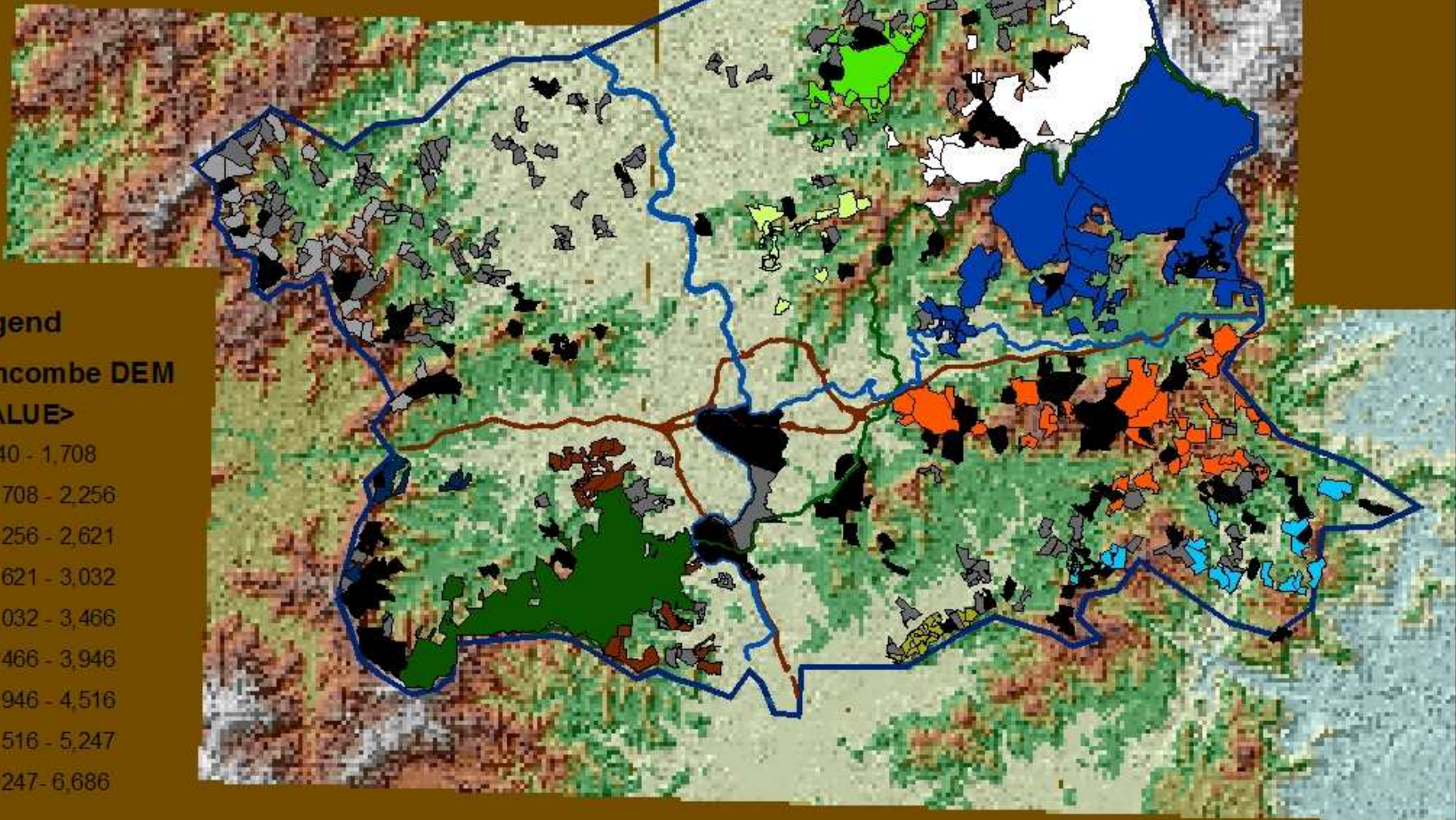
Kathryn R. Gubista, PhD September 2004

# Priority Lands

- Large Parcels (100+ acres)
- Ridge Tops / Highlands
- Adjacent to Protected Areas
- Ecologically Sensitive Areas
- Farmlands












# Map #3 Conservation Focus Areas & Farms



## Legend

### Buncombe DEM

<VALUE>

-  840 - 1,708
-  1,708 - 2,256
-  2,256 - 2,621
-  2,621 - 3,032
-  3,032 - 3,466
-  3,466 - 3,946
-  3,946 - 4,516
-  4,516 - 5,247
-  5,247 - 6,686

61,000      30,500      0      61,000 Feet

# Priority Lands

- **Near Waterways**

  - French Broad River\**

  - Swannanoa River\**

- **Adjacent to Protected Areas**

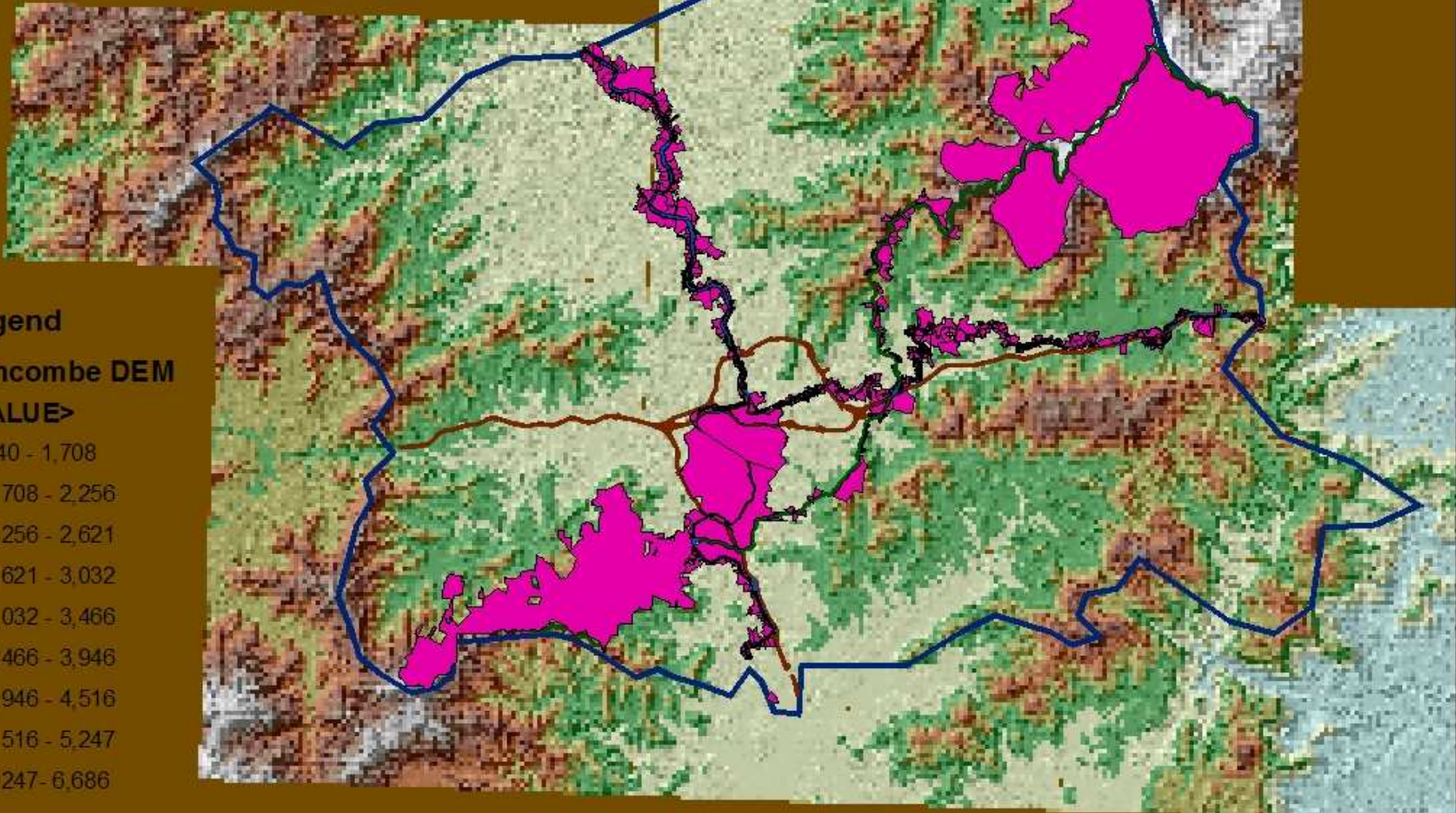
  - Blue Ridge Parkway\**

*\* Within 100 meter = 300 feet*



# Map #4










## Corridor Areas: River and Parkway



### Legend

#### Buncombe DEM

<VALUE>

-  840 - 1,708
-  1,708 - 2,256
-  2,256 - 2,621
-  2,621 - 3,032
-  3,032 - 3,466
-  3,466 - 3,946
-  3,946 - 4,516
-  4,516 - 5,247
-  5,247 - 6,686

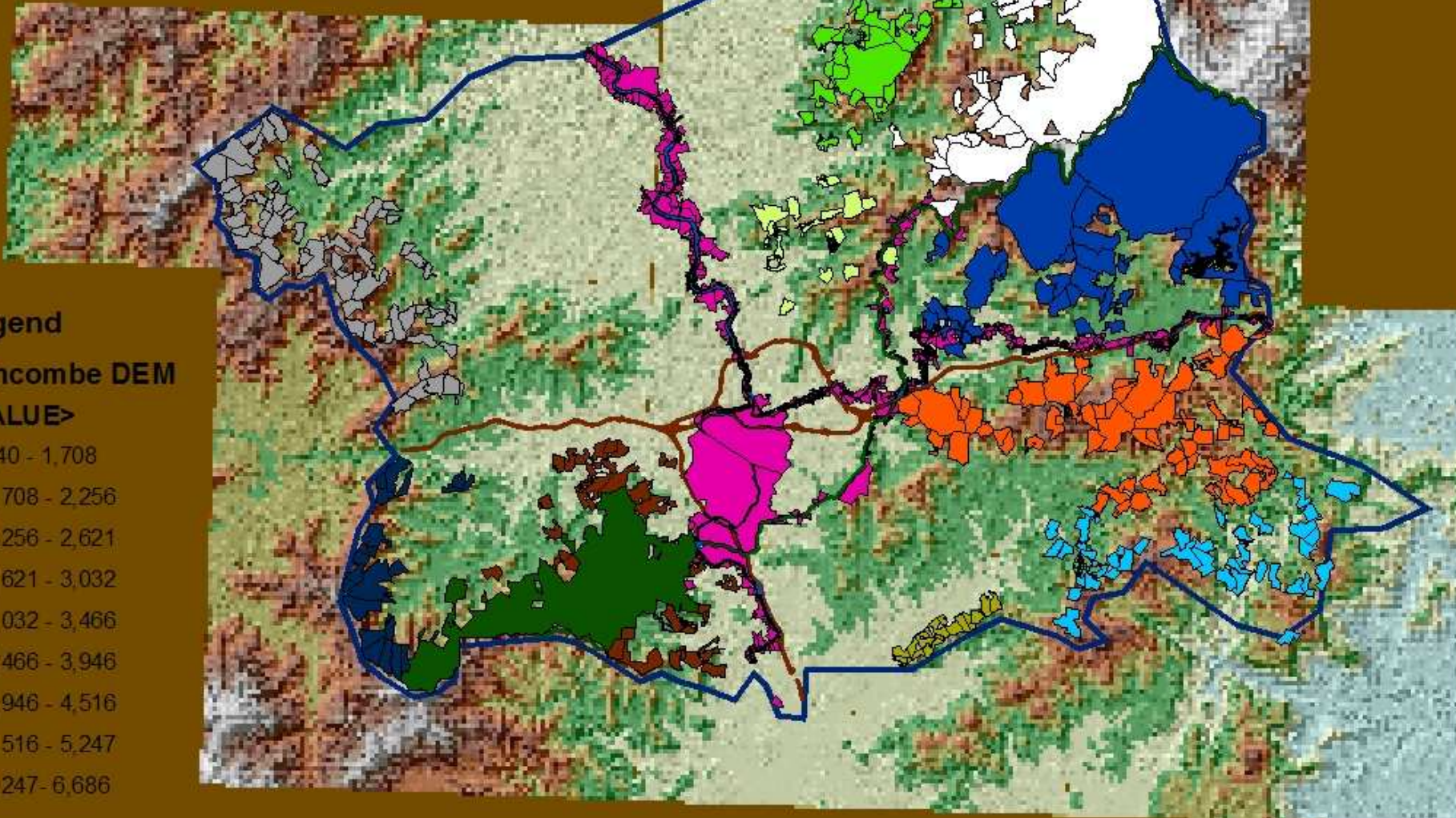
61,000      30,500      0      61,000 Feet

# Priority Lands

- Large Parcels (100+ acres)
- Ridge Tops / Highlands
- Near Waterways
- Wetlands
- Farmlands
- Adjacent to Protected Areas
- Ecologically Sensitive Areas












# Map #5 Conservation Focus Areas & Corridors



## Legend

### Buncombe DEM

<VALUE>

-  840 - 1,708
-  1,708 - 2,256
-  2,256 - 2,621
-  2,621 - 3,032
-  3,032 - 3,466
-  3,466 - 3,946
-  3,946 - 4,516
-  4,516 - 5,247
-  5,247 - 6,686

61,000      30,500      0      61,000 Feet

# Summary

**Natural, cost-effective approach to conservation:**

**Focus resources on establishing and maintaining easements on large-size, high priority lands.**

**Large parcels are more valuable if characterized as ecologically sensitive, high elevation areas, near waterways and watersheds, adjacent to the Blue Ridge Parkway, and include historic and working farms.**





# Summary

The *Conservation Focus Areas* are comprised of a relatively small number (319) of land parcels that cover a large area (113,000+ acres).

The *Conservation Focus Areas* represent the “**low hanging fruit**” because a small number of large-sized parcels comprise over 26% of the county’s acreage.

