

# Public Input Window #2 Summary

Develop Policy Direction and Priorities

## Project Engagement

VIEWS  
7,011

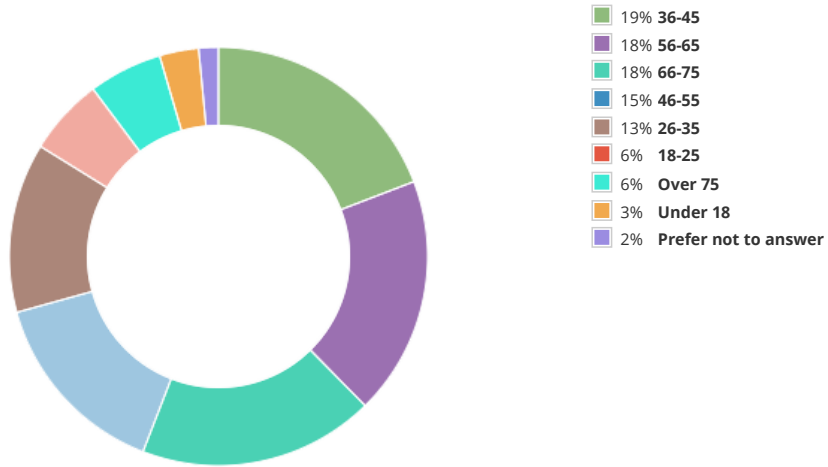
RESPONSES  
84,686

SUBSCRIBERS  
1

PARTICIPANTS  
2,815

COMMENTS  
1,156

## What is your age?



2,772 respondents

What is your race/ethnicity?

80%	White	2188 ✓
8%	Hispanic, Latino, or Spanish	229 ✓
8%	I prefer not to answer	215 ✓
5%	Black or African-American	124 ✓
1%	Other	33 ✓
1%	Asian	20 ✓
1%	American Indian or Alaska Native	15 ✓
0%	Native Hawaiian or Other Pacific Islander	4 ✓

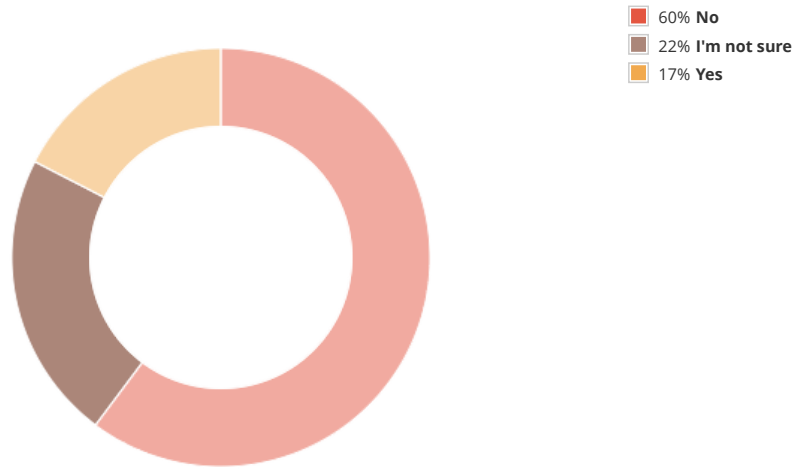
2,741 Respondents

Do you live, work, own property, or go to school in Buncombe County? (Select all that apply.)

88%	I live in Buncombe County	2318 ✓
58%	I own property in Buncombe County	1545 ✓
52%	I work in Buncombe County	1382 ✓
10%	I go to school in Buncombe County	260 ✓
3%	Other	68 ✓

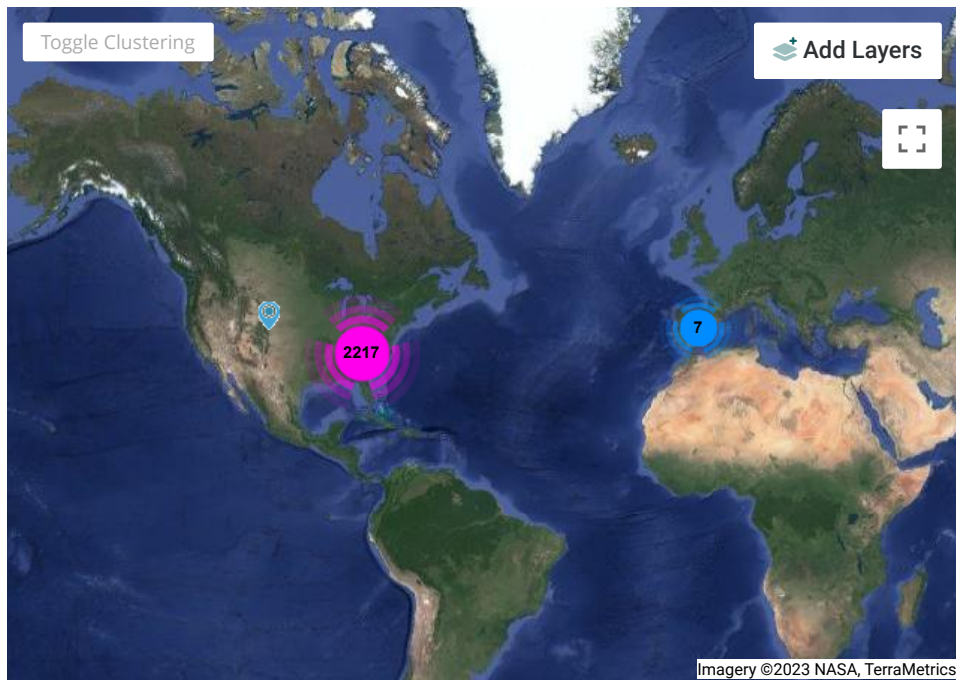
2,642 Respondents

Did you participate in the first Buncombe 2043 polling activity?



2,699 respondents

What is the zip code of the area where you live?

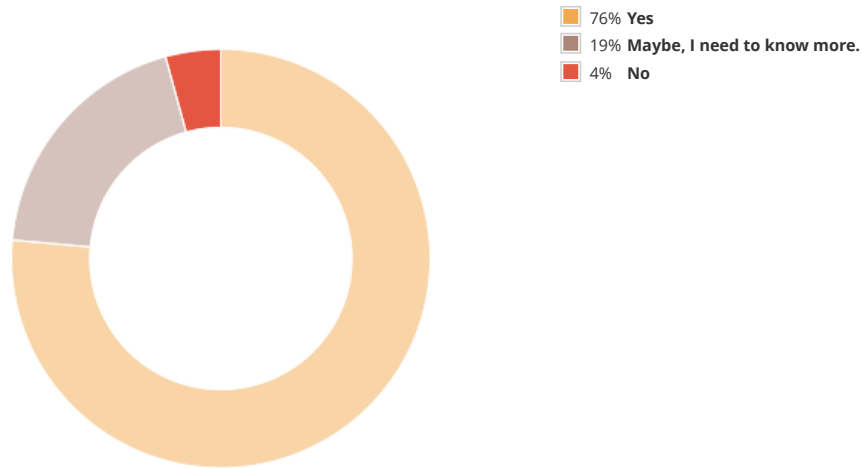


In the first poll, most people said they were concerned about the rising cost of living, particularly housing affordability for residents and workers. **Which of the following directions should the county take to provide affordable housing?** (Select all that apply)

58%	Protect neighborhoods that currently have affordable housing from redevelopment.	1495 ✓
52%	Allow more housing development in specific growth areas where roads and utilities are available and outside of environmentally sensitive areas.	1350 ✓
46%	Encourage development of more housing options (townhomes, duplexes, etc.) in locations that are served by public utilities and roads and are located adjacent to existing development	1178 ✓
45%	Use public resources (funding or land) to support development of housing affordable to local workers.	1155 ✓
14%	Other	357 ✓

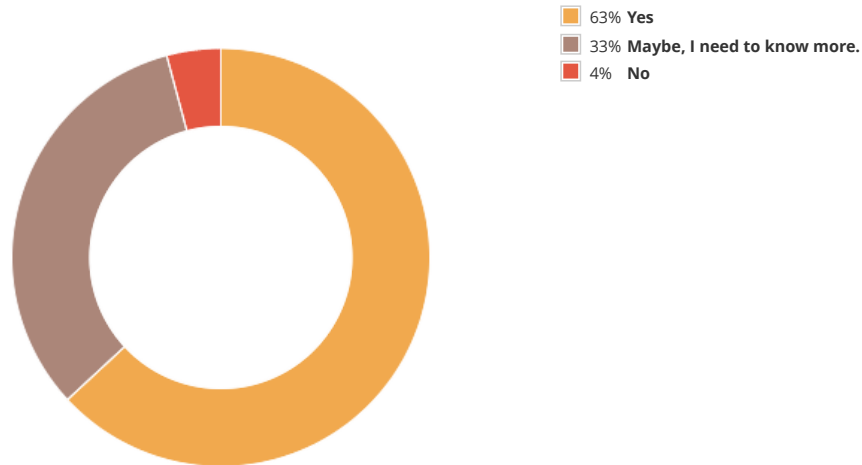
2,588 Respondents

Most people who responded to the first poll said that future development should be located in areas that are served by infrastructure (public water, sewer, and broadband) and away from environmentally sensitive areas such as floodplains and steep slopes. **Do you support the county taking steps to concentrate development in areas served by infrastructure and away from environmentally sensitive areas?**



2,600 respondents

Many roadways in Buncombe County suffer from traffic congestion. Providing improved connections between neighborhoods and improved connections in commercial areas can help reduce traffic congestion on major roadways. These measures can also reduce traffic accidents. **Do you support the concept of providing connections between developments to reduce traffic congestion and safety issues?**



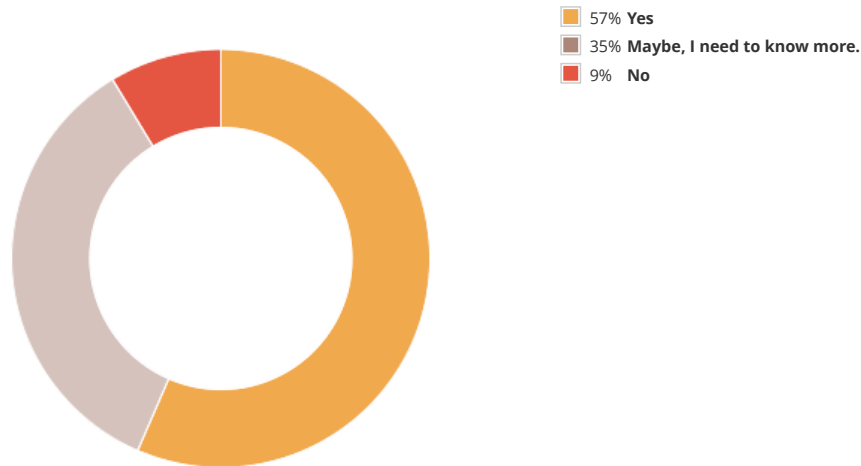
2,563 respondents

Most people who responded to the first poll stated that providing more safe and affordable ways to travel to places (such as biking, walking, and riding a bus) was needed for their family to succeed and have a healthy life. **How should the county create more travel options in Buncombe?** *(Select all that apply)*

65%	Encourage mixed use developments that provide safe ways to walk and bike to shops, restaurants, and other businesses.	1658 ✓
64%	Require sidewalks or multi-use trails in all new commercial developments.	1635 ✓
64%	Support transit service extension to new employment centers and neighborhoods.	1635 ✓
64%	Require sidewalks or multi-use trails as part of development of new neighborhoods.	1621 ✓
63%	In areas where a lot of new development is occurring, encourage development of bike lanes and trails or sidewalks to connect adjacent developments.	1604 ✓
59%	As redevelopment of commercial areas occur, require sidewalks to connect to adjacent roads and neighborhood areas.	1501 ✓
10%	Other	249 ✓

2,536 Respondents

Many people who responded to the first poll identified the need to bring higher paying businesses and jobs to the county. Increasing employment opportunities in Buncombe will require the recruitment of new businesses or the expansion of existing businesses. **Since developable land is limited, do you support the identification of specific areas for commercial or industrial growth? These areas would most likely be locations that have access or are close to transportation, workers, utility service, and supporting businesses.**



2,434 respondents

To become a more equitable community, many residents in Buncombe need an achievable path to enter the workforce and/or earn higher wages. **Which of the following approaches do you think the county should take to remove barriers for these residents? (Select your top three choices)**

54%	Support work-based learning opportunities for high school, community college, and regional university students to learn about and train for local employment opportunities.	1277 ✓
48%	In partnership with regional institutions, support training programs to help workers learn new skills or better market their skills, resulting in increased wages.	1146 ✓
41%	Provide affordable and quality childcare services.	975 ✓
39%	Increase transit access to job centers and training opportunities, with a particular emphasis on serving lower-income communities.	935 ✓
32%	Focus on improving achievement of K-12 schools and particularly reducing college and career readiness gaps and increasing graduation rates.	755 ✓
28%	Expand early childhood education opportunities (pre-kindergarten).	666 ✓
14%	Create Buncombe County Human Resources policies to attract and recruit staff that better represent the diversity of the county.	325 ✓
7%	Other	159 ✓

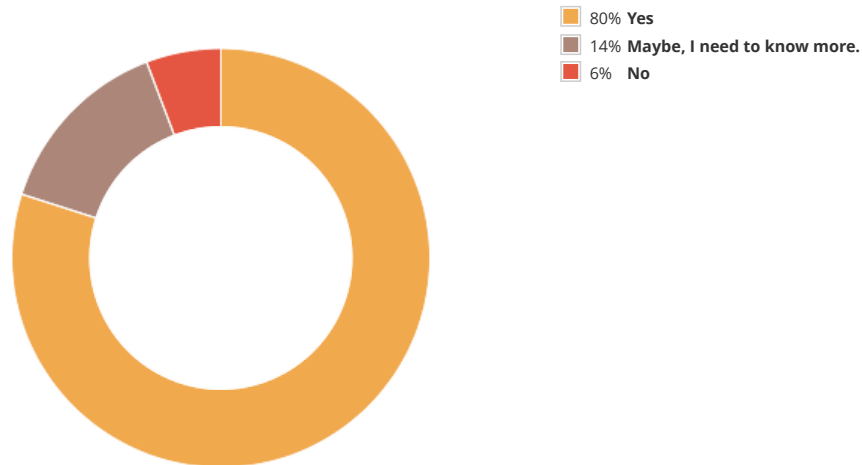
2,376 Respondents

Most people who responded to the first poll stated that they valued the natural environment and rural landscape most about the county. **Choose which efforts you support to protect natural areas, rural character, and farms in Buncombe.** (Select all that apply)

73%	Limit the amount and type of development that can occur in rural and farmland areas.	1766 ✓
64%	Increase public funding to conserve high quality rural lands and farms to protect them for the future.	1542 ✓
62%	Support rural landowner outreach programs to provide information about financial and estate planning tools aimed at protecting rural character and natural lands.	1495 ✓
8%	Other	202 ✓

2,406 Respondents

Green infrastructure is defined as "the network of natural open spaces that serves multiple purposes, such as managing stormwater, providing habitat for wildlife, supporting natural ecosystems, and providing recreational opportunities for people." Floodplains, forests, and even farms and parks can be part of a community's green infrastructure. These areas work best when they are connected and provide multiple benefits, such as cleaning water and air. **Generally speaking, do you support limiting development in green infrastructure areas?**



2,406 respondents

Most people who responded to the first poll stated that the county's priorities for health and social service needs should be the following:

- Affordable healthcare,
  - Health insurance,
- Affordable prescription drugs,
  - Mental health, and
- General health services.

**Which of the following approaches do you support to enhance health and social service needs in Buncombe?** *(Select all that apply)*

61%	Improve access to healthy and affordable food.	1445 ✓
58%	Expand or increase funding for parks and recreation programs to improve social connection and well-being.	1363 ✓
56%	Increase financial assistance for people and families in need of health and supportive services.	1330 ✓
56%	Improve access to walking and bicycling trails for physical activity.	1330 ✓
53%	Encourage more healthcare services to locate in Buncombe, such as offices for mental health providers.	1257 ✓
51%	Expand access to public health services by providing more public transportation options to health centers.	1208 ✓
42%	Expand promotion of current services available to residents.	993 ✓
41%	Expand health services that relate to understanding or signing up for health insurance.	969 ✓
9%	Other	203 ✓

2,357 Respondents

Most people who responded to the first poll identified greenways and trails as the top needs for new parks and recreation facilities in Buncombe. **Select which areas should be the priority for future greenways and trails.** *(Select up to three)*

62%	Trails and greenways along natural areas, such as along rivers.	1397 ✓
58%	Trails and greenways that connect neighborhoods to schools and parks.	1312 ✓
49%	Trails and greenways that connect neighborhoods to commercial and employment areas.	1101 ✓
36%	Trails and greenways that serve as regional connections across the county.	799 ✓
33%	Trails and greenways that connect neighborhoods to each other.	731 ✓
5%	Other	112 ✓

2,247 Respondents

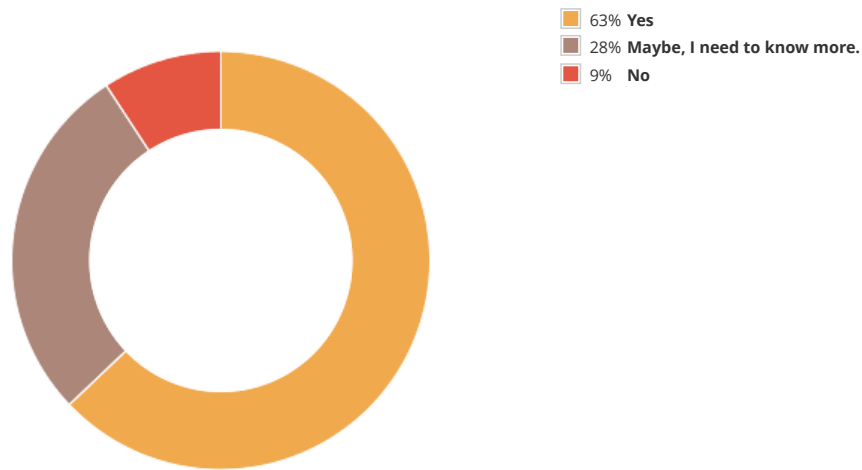


Recent weather events in the region have shown us that hazards and disasters, such as flooding, can be damaging and life-threatening. **What approaches should the county prioritize to become more resilient against future hazardous events?** (Select your top three)

67%	Adopt regulations that require higher standards for development in areas that are at higher risk for flooding, wildfires, and landslides.	1512 ✓
64%	Create policies to direct development away from areas with a high potential for hazards.	1446 ✓
49%	Develop and implement mitigation measures to reduce the impact of hazardous events.	1105 ✓
38%	Provide information to property owners and residents in high hazard areas about the risks of flooding, wildfire, and landslide events and how to better prepare for them.	851 ✓
22%	Launch a broader public awareness campaign about the threats of hazardous events and how to prepare for them.	509 ✓
4%	Other	101 ✓

2,269 Respondents

Most people who responded to the first poll stated that future growth should be located in areas that are served by public water, sewer, and broadband and away from environmentally sensitive areas. **Do you support the county identifying places where growth is not preferred during the next 20 years and discouraging extension of utilities to those areas?**



2,264 respondents

Most people who responded to the first poll expressed interest in creating a more sustainable future. **Select all of the energy conservation programs that you would support the county implementing.**

73%	Support solar power generation at government facilities.	1637 ✓
73%	Encourage use of energy efficient designs in new private developments.	1634 ✓
62%	Encourage solar power generation on private lands.	1401 ✓
58%	Adjust regulations to better protect renewable energy resources.	1294 ✓
56%	Create new public financial tools to invest in renewable energy projects.	1248 ✓
55%	Expand electric vehicle charging infrastructure in Buncombe.	1226 ✓
10%	Other	228 ✓

2,246 Respondents