
BIENVENIDXS A ESTA LLAMADA

WELCOME TO THIS CALL

Este es un espacio bilingüe

Las instrucciones para el uso de la interpretación serán proveídas momentáneamente

This is a bilingual space

Instructions In the use of interpretation will be provided momentarily



Cenzontle
LANGUAGE JUSTICE
COOPERATIVE



BUNCOMBE COUNTY

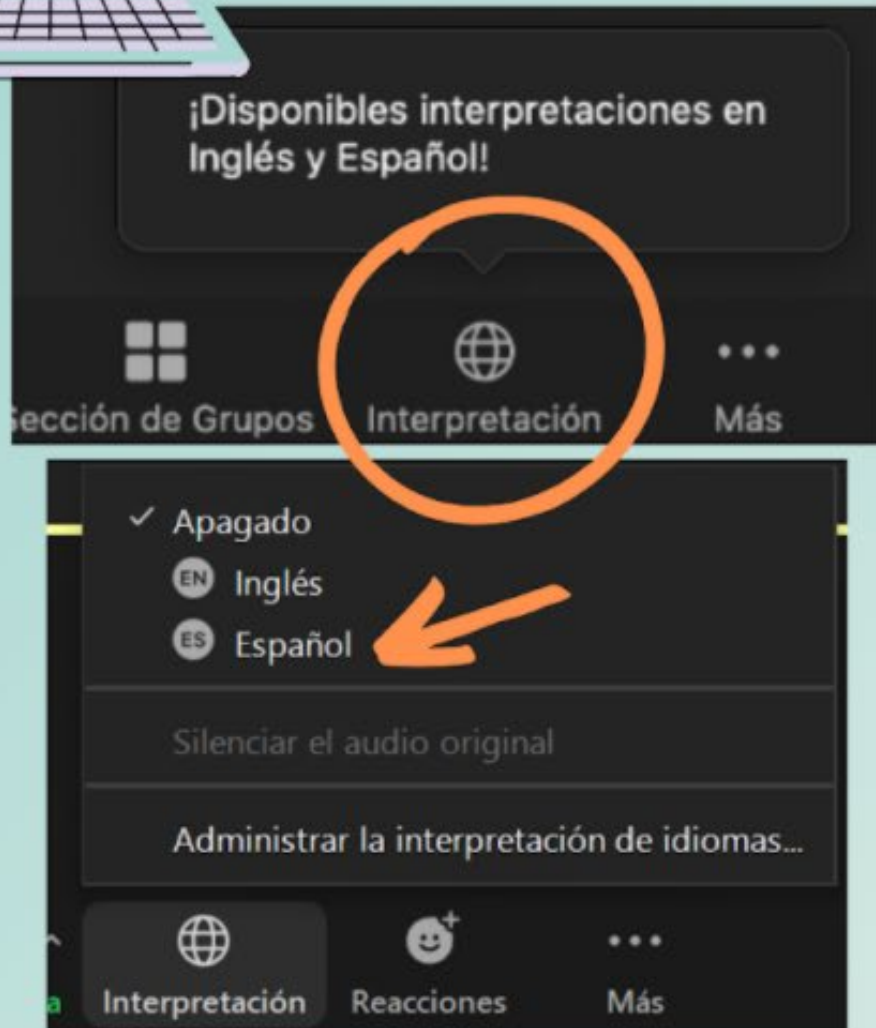


2/8/2022

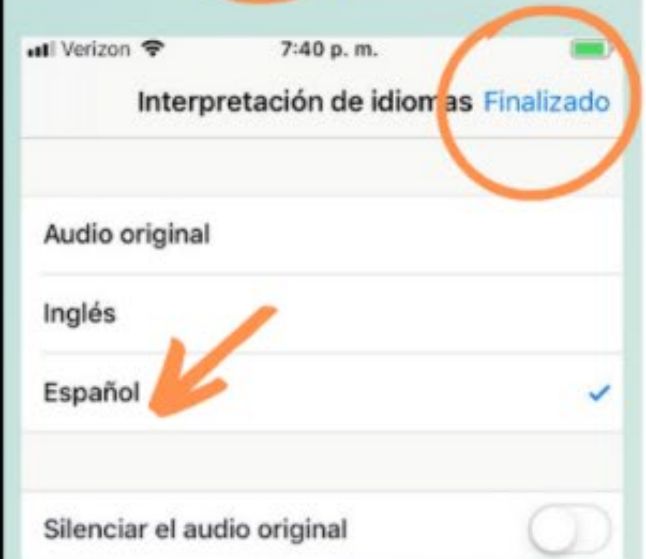
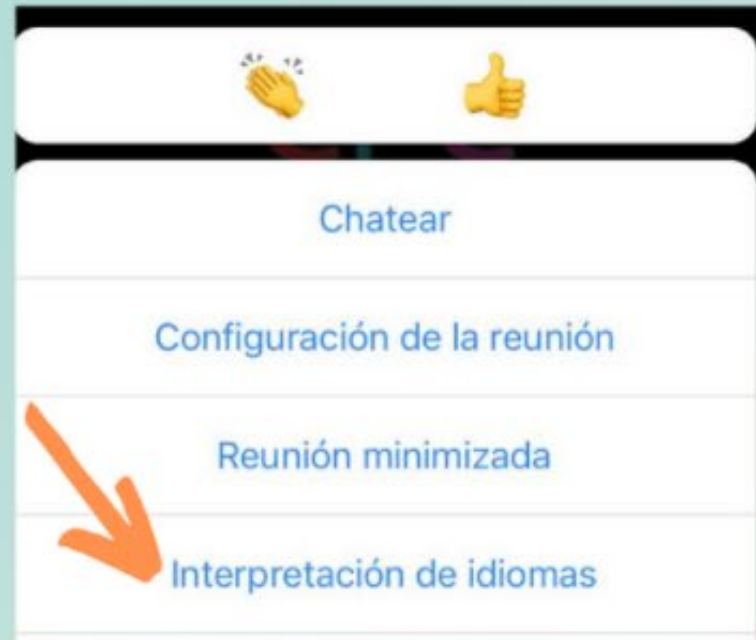
PARA ACCEDER A LA INTERPRETACIÓN



Por computador



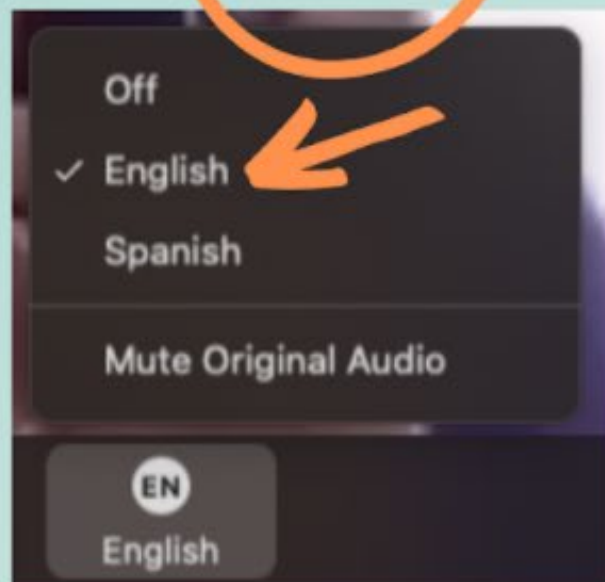
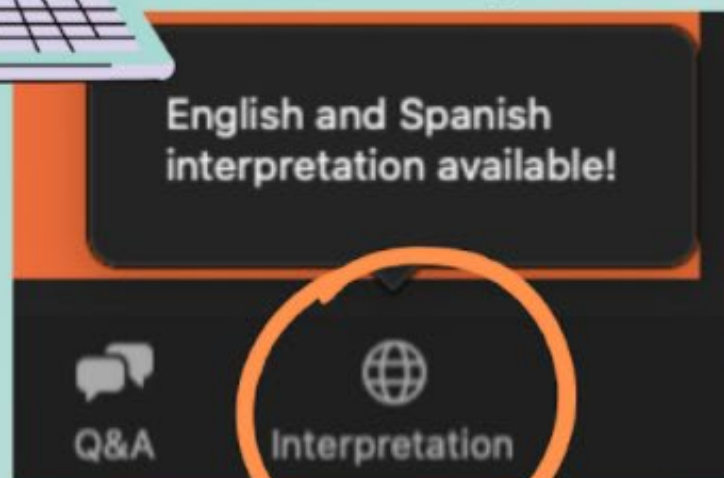
Por teléfono inteligente



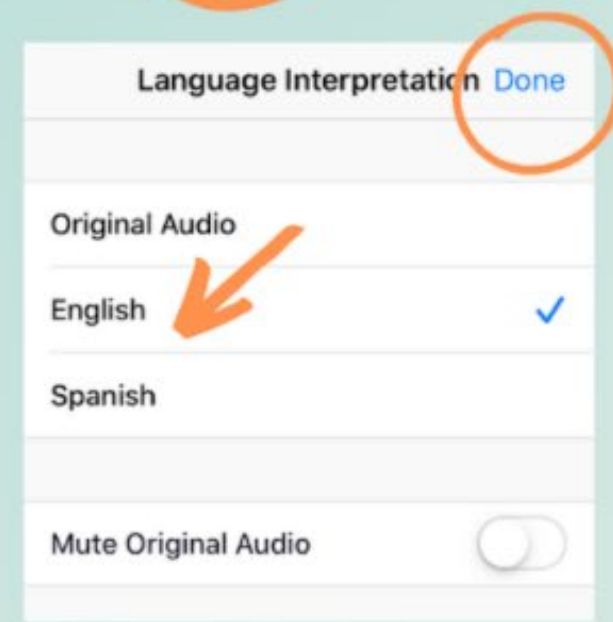
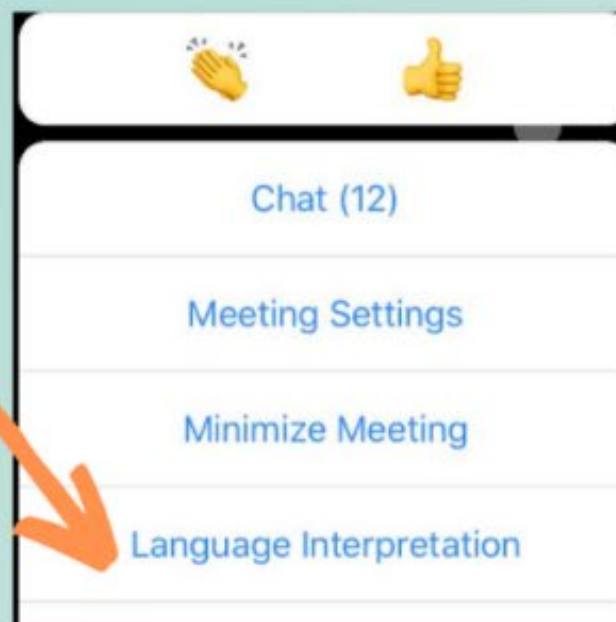
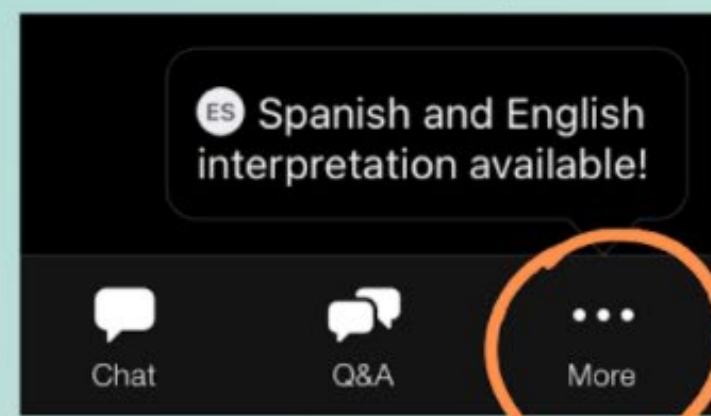
TO ACCESS INTERPRETATION



Via computer



Via smartphone



PROBLEMAS CON LA INTERPRETACION?

**¡Dejanos saber inmediatamente!
Escribe un mensaje en el chat**

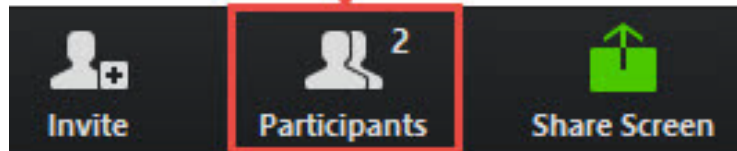


ISSUES WITH INTERPRETATION?

Let us know immediately! Write a message in the chat

1

Después de iniciar la reunión de zoom, haga clic en el icono de "participantes" en la parte debajo de la ventana

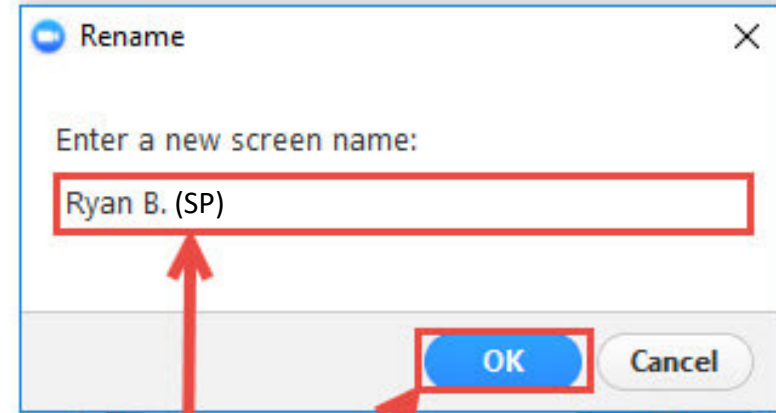


Participants (1)

RB Ryan B... (Host, me) Mute Rename

2

En la lista de "participantes" en el lado derecho de la pagina de zoom, coloque el cursor sobre su nombre y haga clic en el botón "cambiar nombre".



3

- Escriba "SP" detras de su nombre para mostrar que desea ir a grupos en español. Haga clic en "Aceptar"



¡Bienvenidxs! Welcome! добро пожаловать!



The live meeting will begin momentarily.

<https://youtu.be/UtzVZLxTQIY>

JAN Virtual Community Meeting - 01/20/22

20 Thu, Jan 20 6:00 PM [Add to calendar](#) ▼

Virtual

INFO

COMMENTS

Meeting facilitators will walk participants virtually through a community poll, priority exercise, and a mapping exercise.

Buncombe County is creating a comprehensive plan, and we want to ensure that our team hears input, ideas, opinions, and concerns from every corner in our community that will shape Buncombe County's 20-year plan. The public is invited to: **Buncombe...**

Register

View Page >

Please register to receive updates!

<https://engage.buncombecounty.org/G5773>



BUNCOMBE COUNTY



2/8/2022

Zoom Poll

What is your favorite winter activity in Buncombe County? **Answer in the Zoom Poll when the window appears.**

- Hiking
- Skiing or snow tubing
- Polar plunge
- Sitting by the fire with a hot drink
- Drinking coffee in a local coffee shop
- Taking advantage of the Blue Ridge Parkway when it's closed to cars
- Other?



Zoom Poll

Why did you join this meeting? **Answer in the Zoom Poll when the window appears.**

1. I want to be helpful to the planning process
2. I have ideas to share about the future of Buncombe County
3. I am skeptical of the planning process
4. I am curious about the future of Buncombe County
5. Something else





COMPREHENSIVE PLAN

Community Engagement Window #1

Creating the Vision and Goals



Meeting Overview

1. Comprehensive planning in Buncombe County
2. What trends and influences could affect Buncombe's future?
3. Hearing from you!
 - a. What are your thoughts about Buncombe today?
 - b. What are your ideas or hopes for Buncombe's future?
 - c. What places would you like to protect, grow, change, or replicate?
 - d. Ask any question you have from our planning team.
4. How can you stay involved?



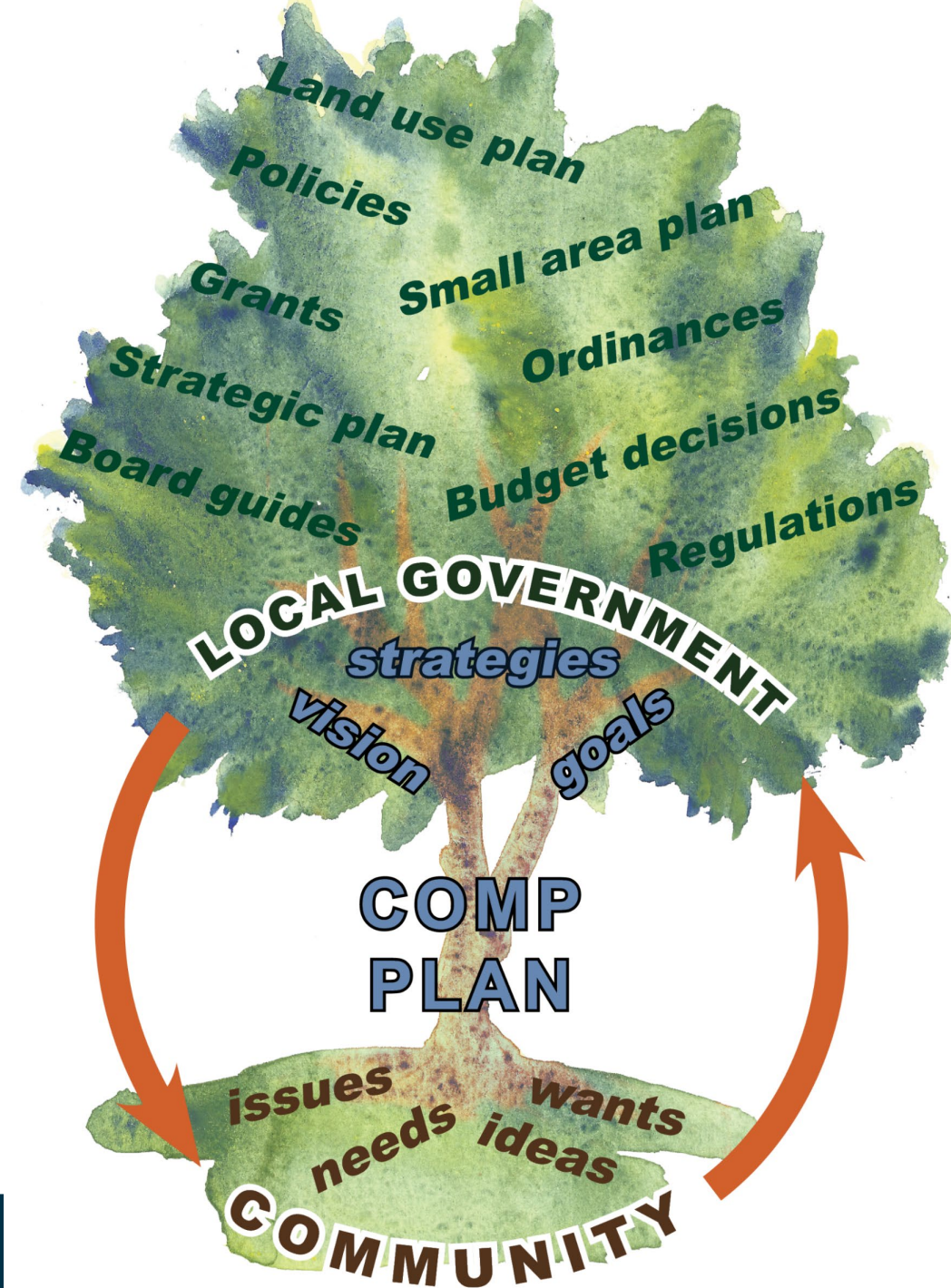
Meeting Overview

- 12:00 PM – 1:00 PM
 - Introduction (10 minutes)
 - Polling Activity (35 minutes)
 - Planning Influences Presentation (15 minutes)
- 1:00 PM – 2:00 PM
 - Breakout Room Discussions
 - Priorities and Actions Activity & Discussion (30 minutes)
 - Mapping Activity Review and Questions (30 minutes)



What are the steps?

1. Identify the community's issues, needs, wants, and ideas
(Our current focus)
2. Develop the Plan which creates the vision, strategies, and goals
3. Use the adopted Plan to direct decisions about budgets, priorities, regulations, and further planning

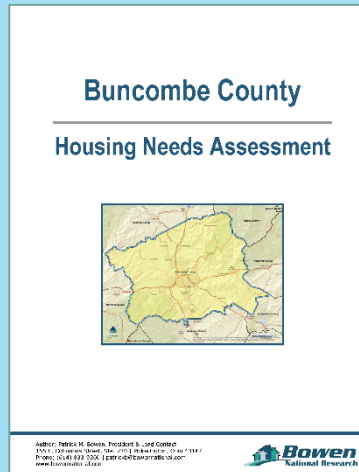
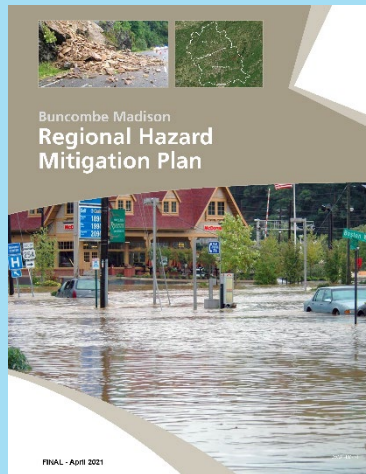
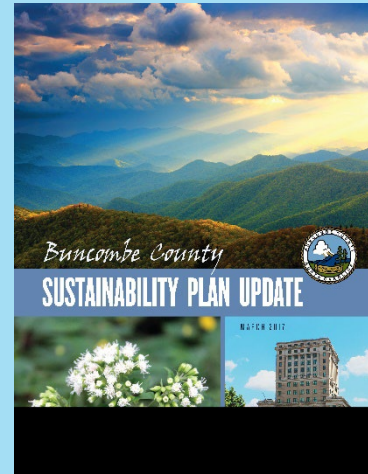
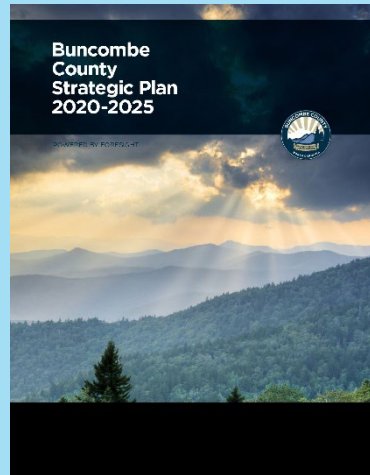
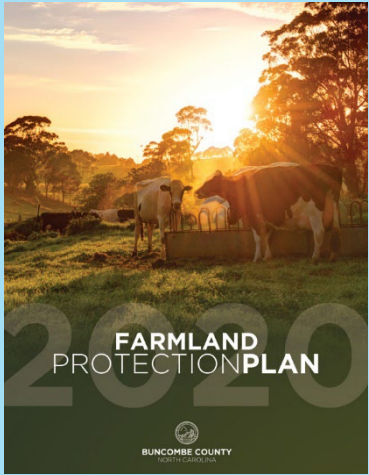


What can the Plan do?

- Guide future **other Plans**, including **Small Area Plans** for neighborhoods
- Guide **budget decisions**
- Direct changes to **ordinances, regulations, and policies**
- Create opportunities for **new local and regional collaboration**, and pursuing Federal and State funds



Community Plans into One Policy Guide



and others...



BUNCOMBE COUNTY

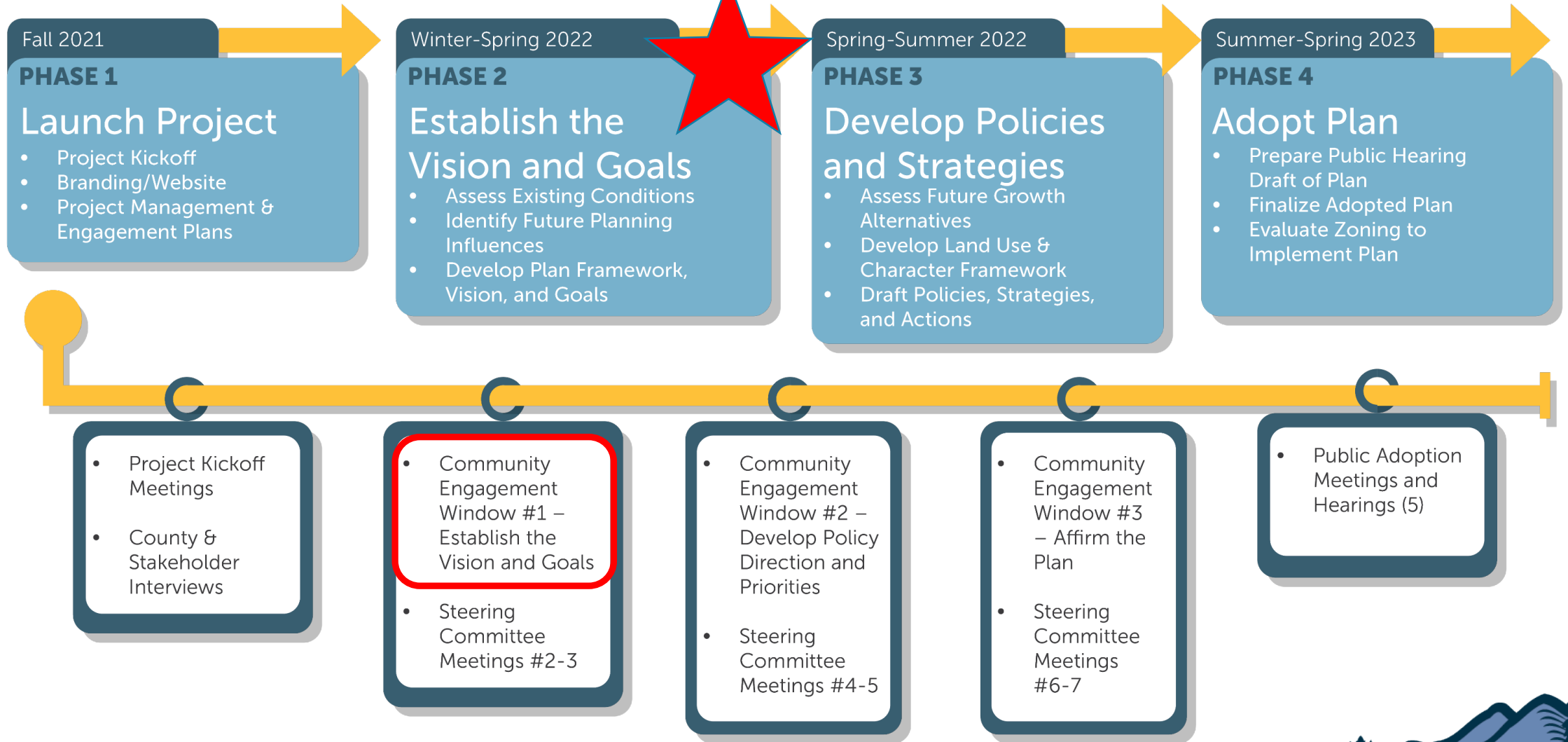


Who is involved?

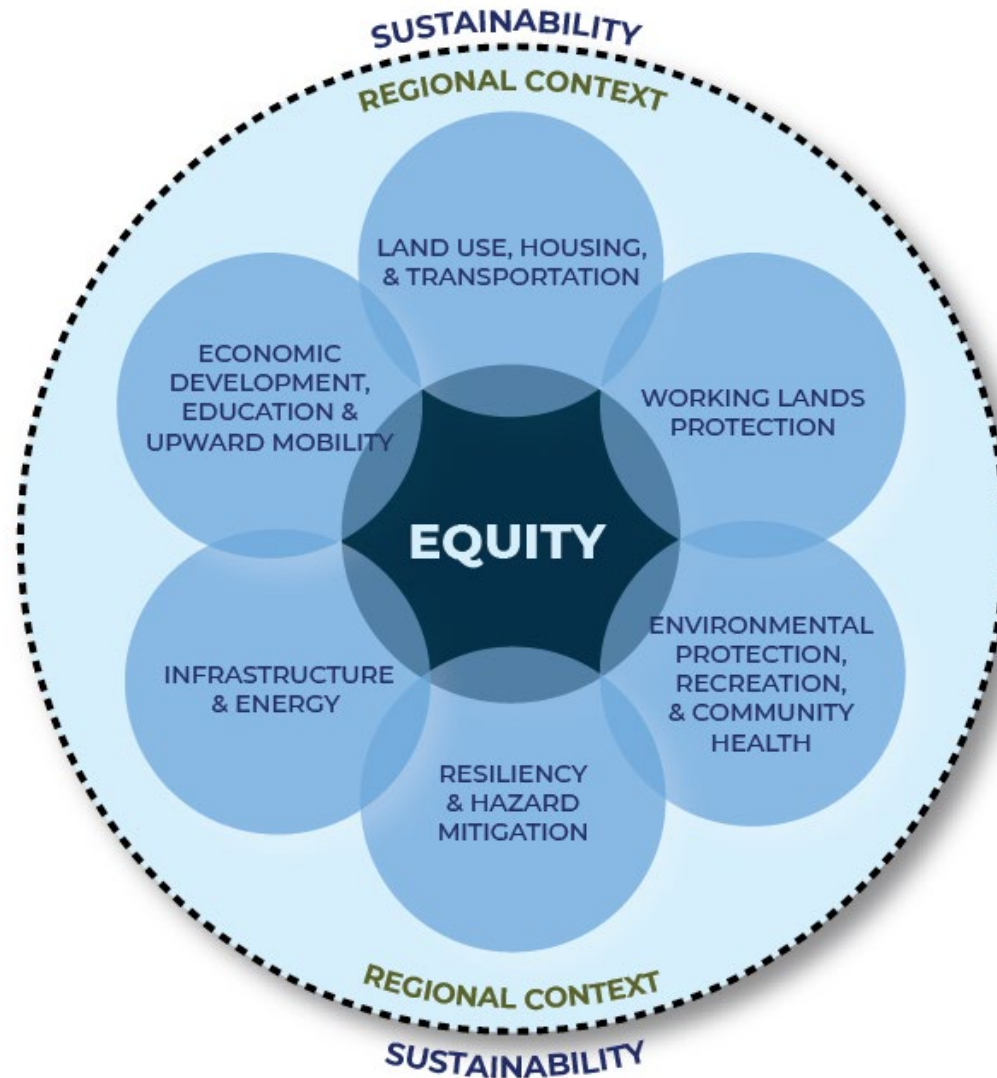
- Buncombe residents, including youth
- Stakeholder groups
- Plan Steering Committee
- Planning Board
- Board of Commissioners
- Technical Advisory Committee
- County Project Team



Planning Phases



Priority Planning Topics Identified



POLLING ACTIVITY

What are your overall impressions of
Buncombe County today?



Activities for Vision and Goals

This site contains a presentation and activities that Buncombe County residents can do during the in-person, virtual, and self-guided public input meetings for the Comprehensive Plan process.

INTRODUCTION

POLL

PRIORITIES & ACTIONS

MAPPING

What is the zip code of the area where you live?

Save

What is the zip code of the area where you work?

(Leave blank if you do not work)

Save

How long have you lived in Buncombe County?

☐ Less than 1 year

☐ 1 - 5 years

☐ 6 - 10 years

☐ 11 - 20 years

☐ 21 - 50 years

☐ I was born here and never left

Select a response

How long has your family lived here?

☐ My family does not live here

☐ 1 - 10 years

☐ 10 - 20 years

☐ 20 - 50 years

☐ 50 - 100 years

☐ More than 100 years

Select a response

Why do you choose to live in Buncombe County? (Pick your top choice.)

☐ Natural beauty and mountains

☐ Family-oriented community

☐ Sense of community

☐ Quality of life (schools, recreation/parks, fun activities, and dining options)

☐ Work here or your spouse/partner works here

☐ Extended family lives here

Polling Activity

- Link is in the chat to participate.
- Scroll down and click “Poll”
- First, we will walk through the questions together.
- After we review the questions together, you will have 30 minutes to complete the polling activity.
- When the 30 minutes are up, we will return to review the live results of the poll together.



BUNCOMBE COUNTY



2/8/2022

Please complete the polling activity during this time.

<https://engage.buncombecounty.org/Y4853>

We will return in 30 minutes **at 00:00** to share the poll results and continue the presentation.

Please write to us in the chat if you have any questions.



PLANNING INFLUENCES

What trends and influences could affect
Buncombe's future?

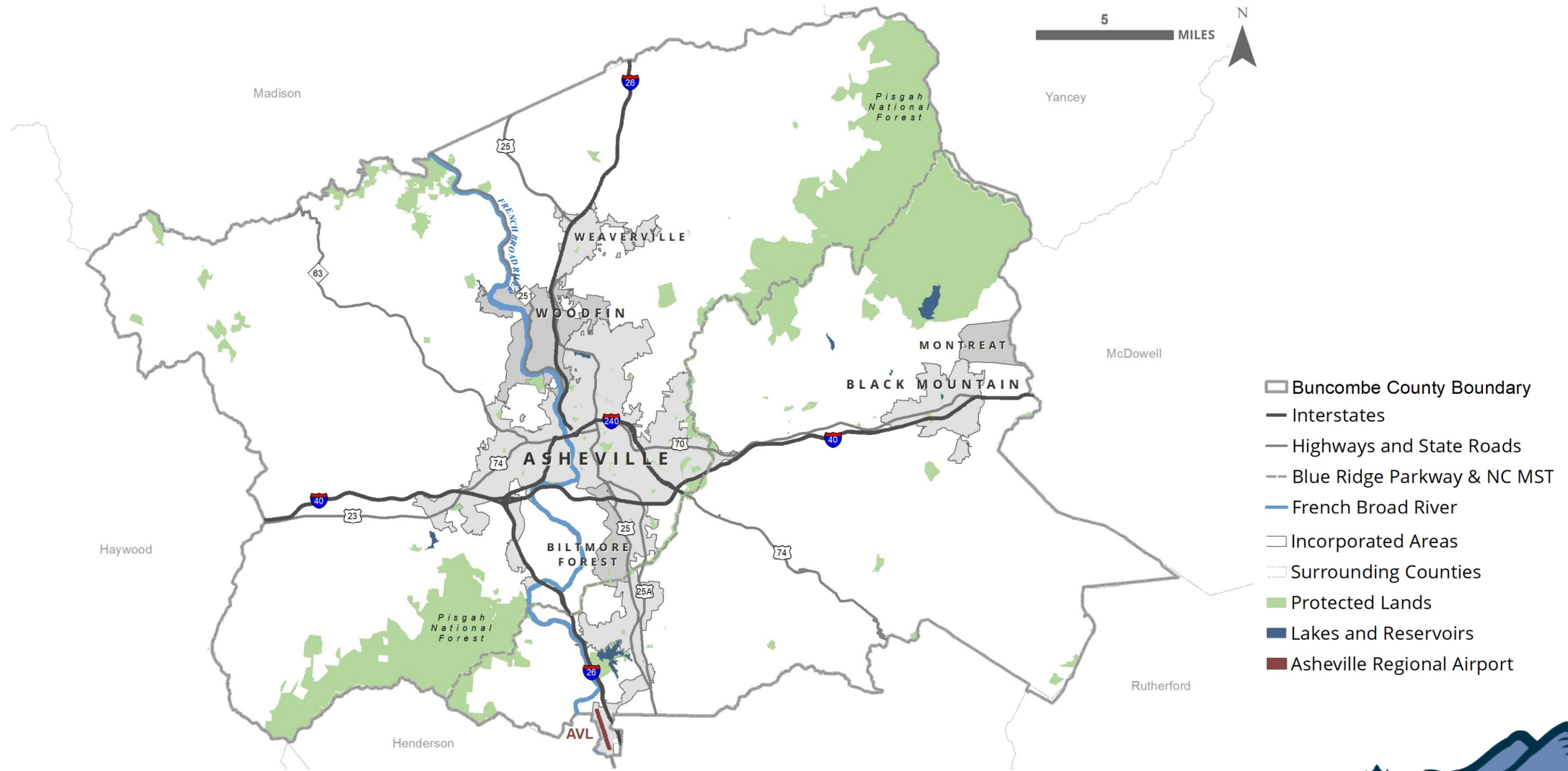




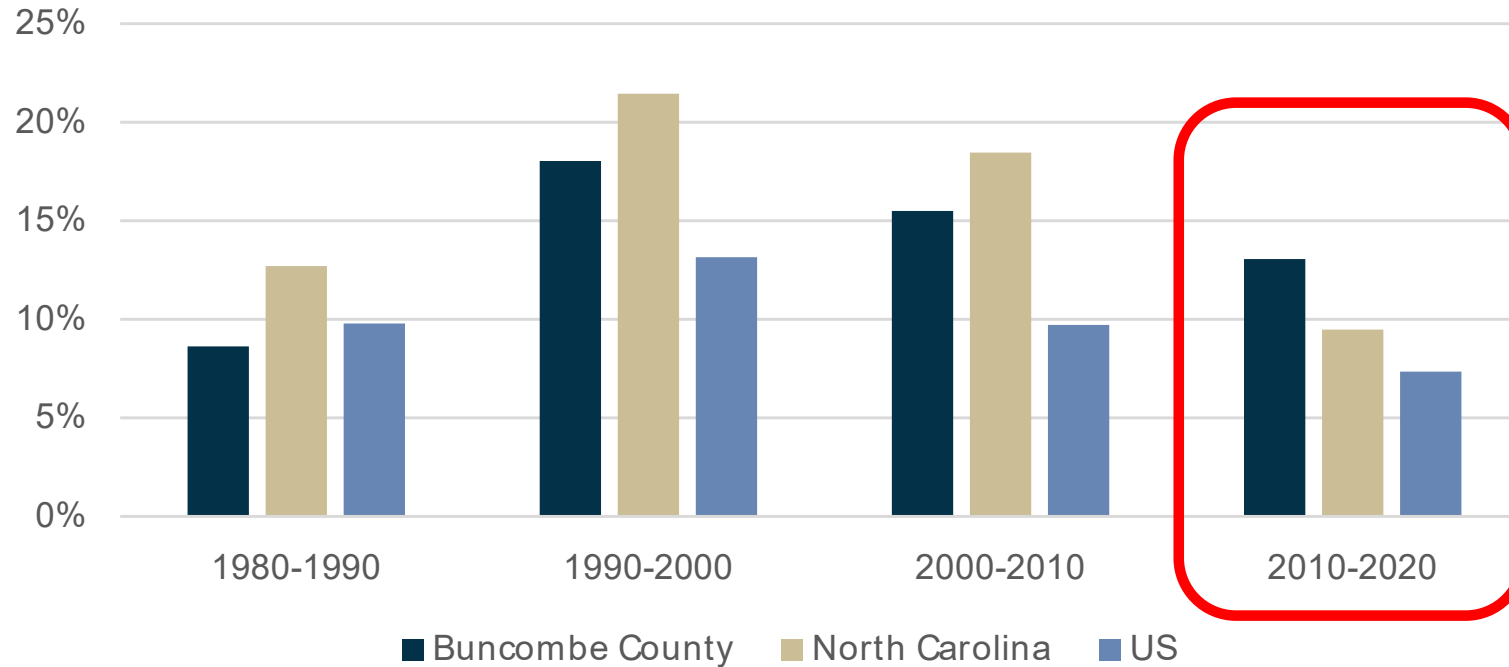
POPULATION TRENDS



Buncombe County, NC



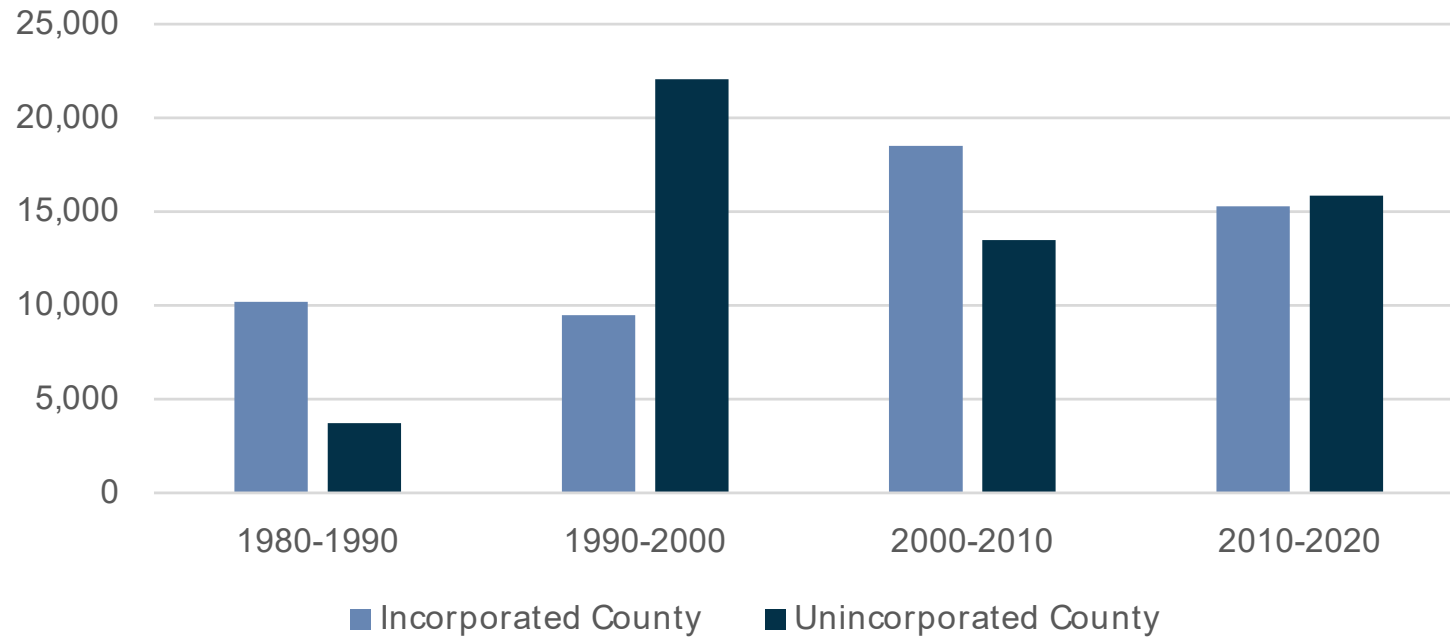
Population Growth by Decade



Buncombe's 2020 Population: 269,452



Population Growth by Decade

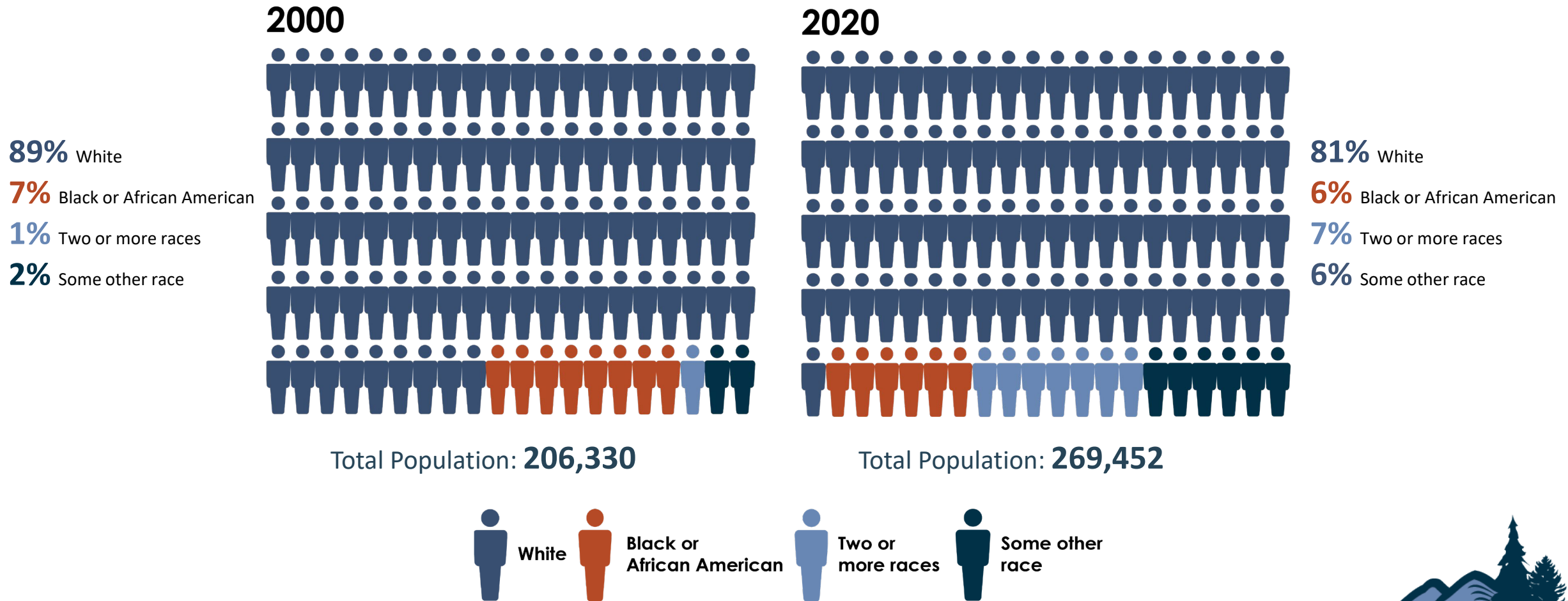


56%

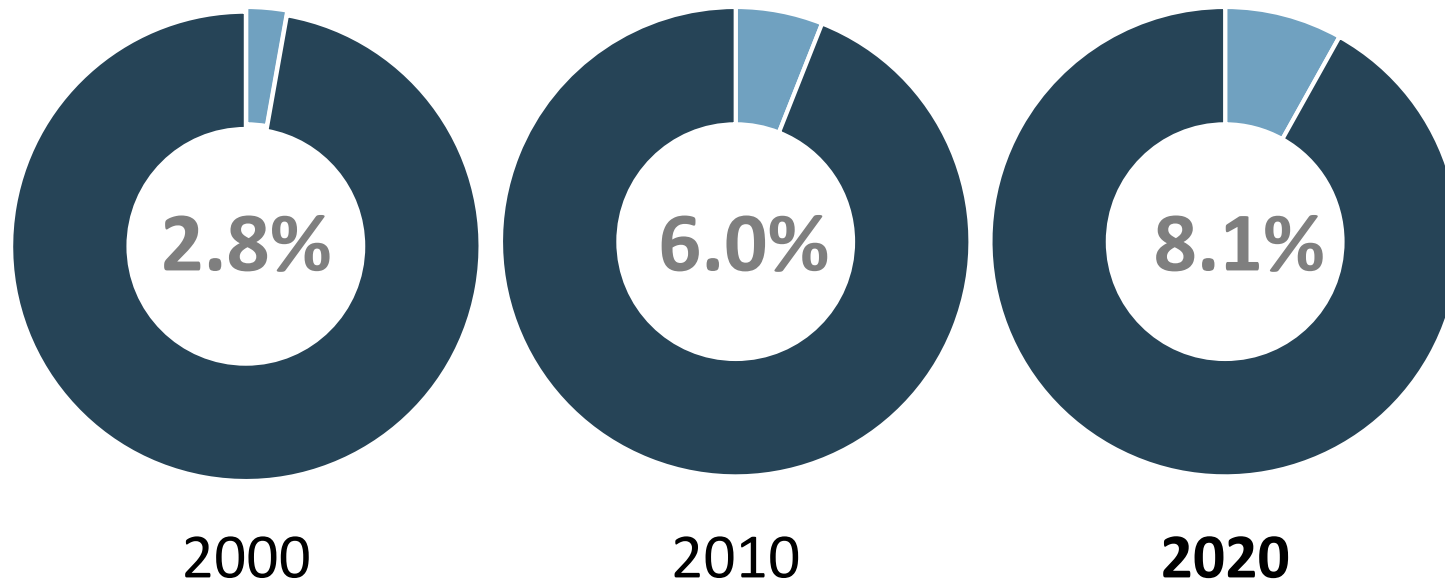
of residents live in unincorporated areas



Population Change by Race



Population Change by Ethnicity



2000, 2010, and 2020 U.S. Census

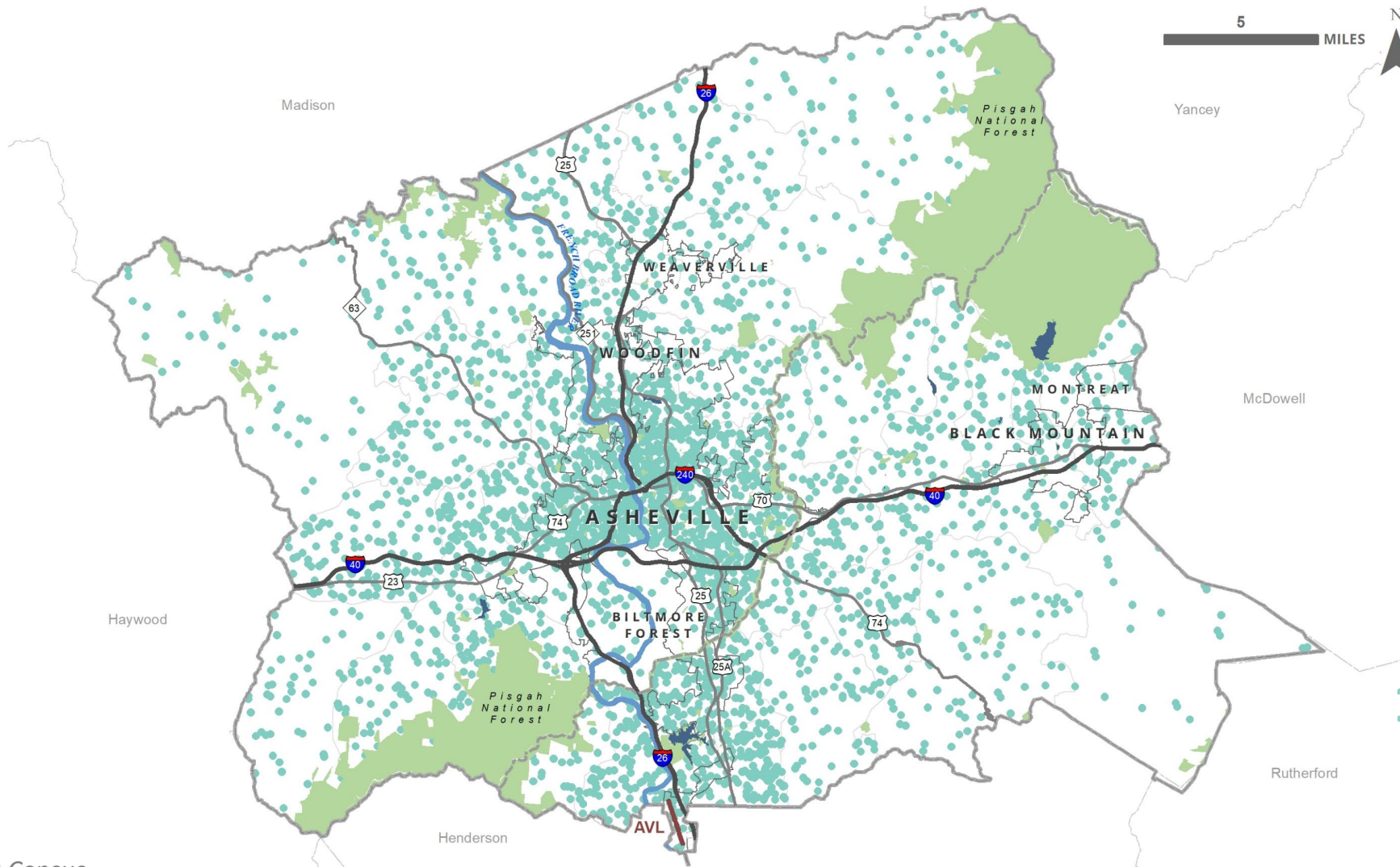


BUNCOMBE COUNTY



2/8/2022

2020 Population



269,452

2020 Buncombe County
Total Population

1 dot = 100 people

2020 Census

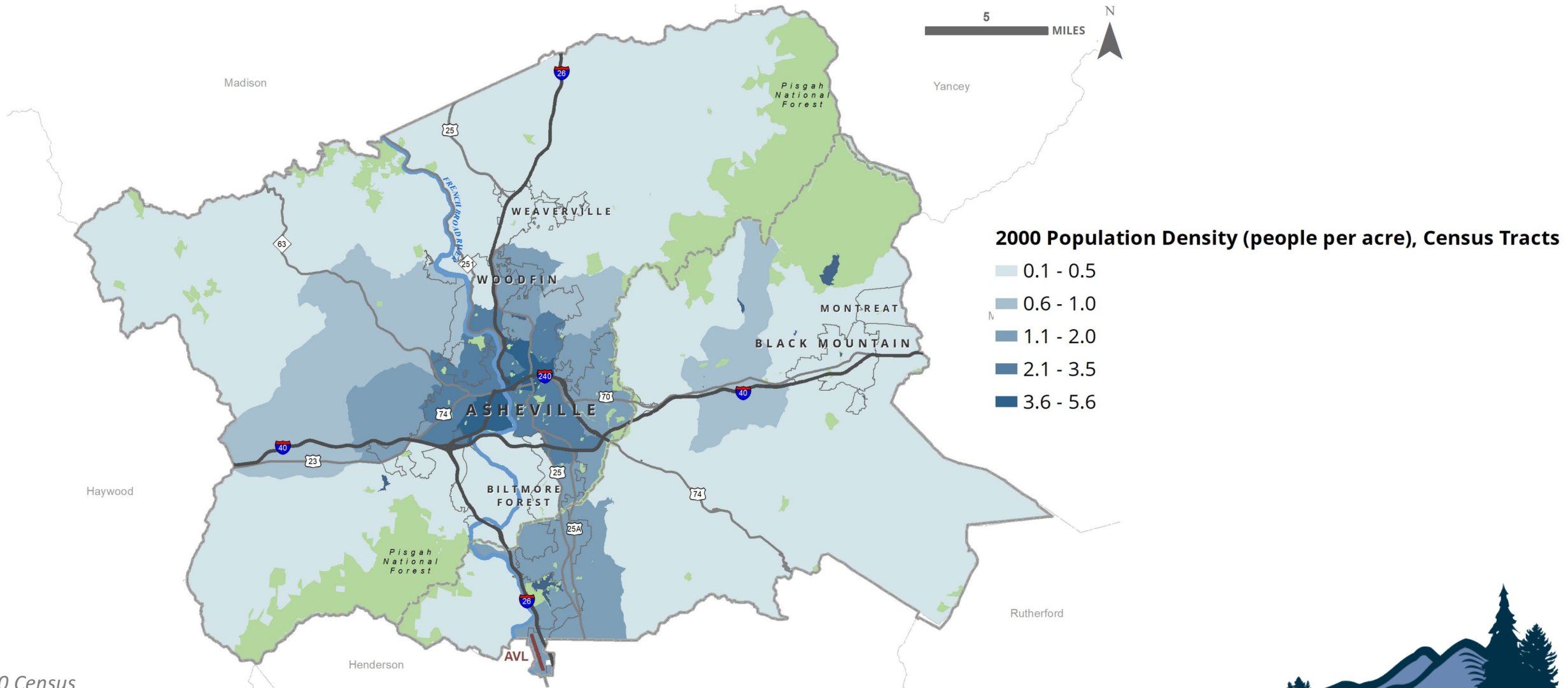


BUNCOMBE COUNTY



2/8/2022

2000 Population Density



2000 Census

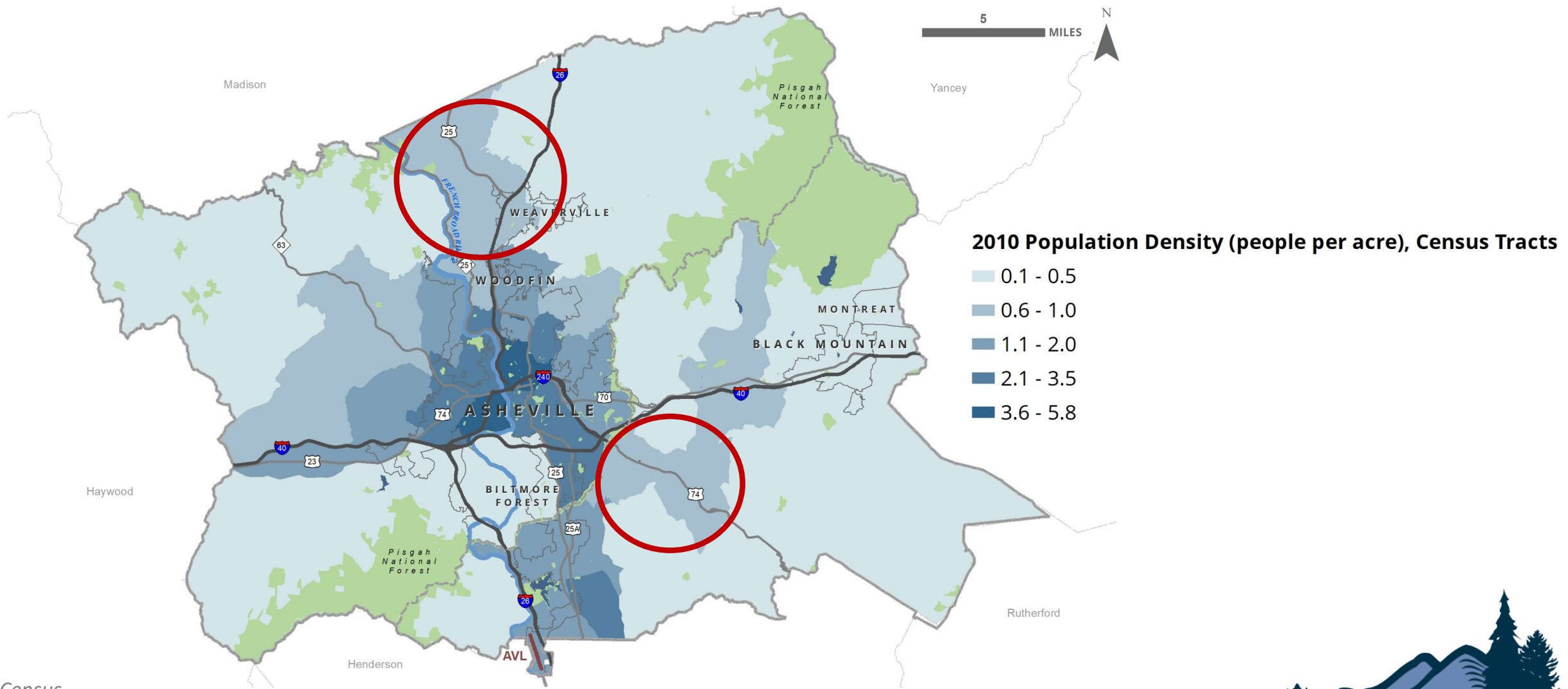


BUNCOMBE COUNTY



2/8/2022

2010 Population Density



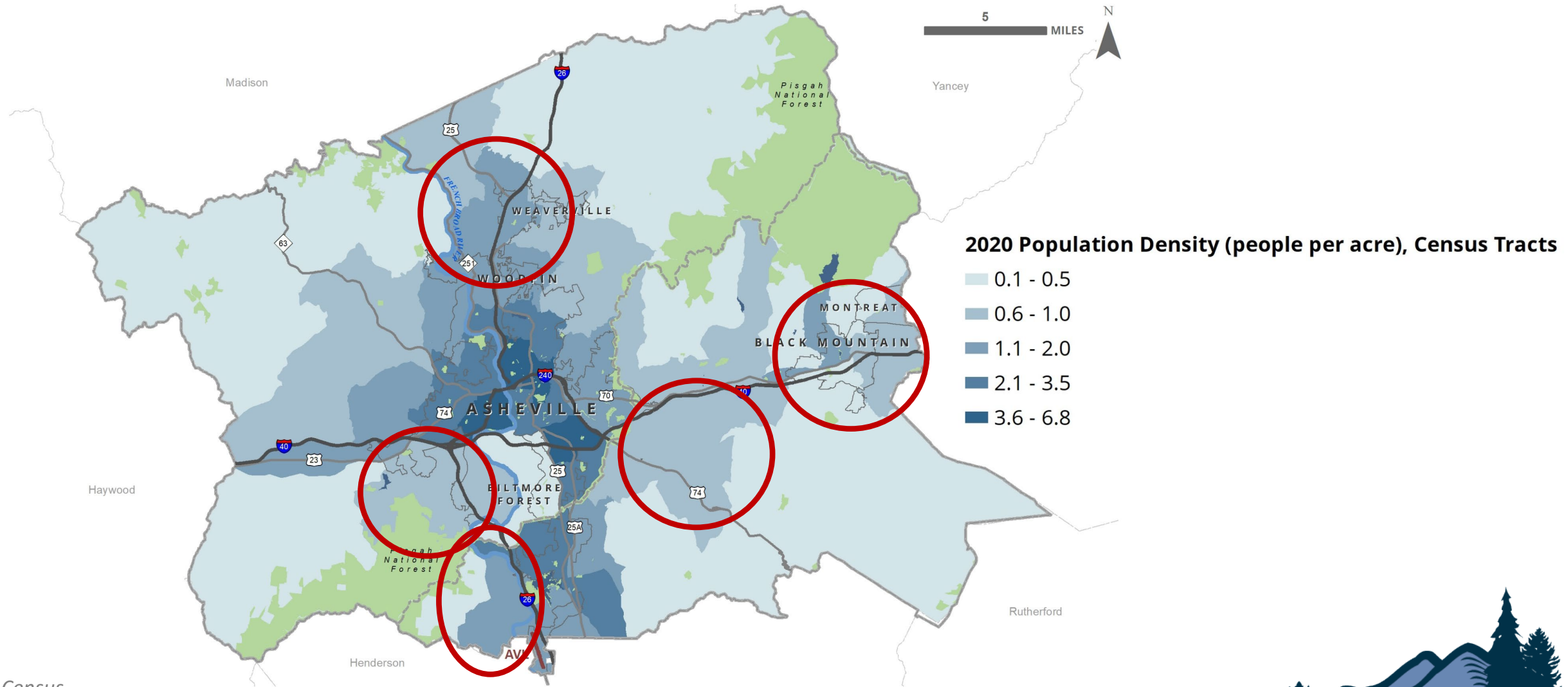
2010 Census



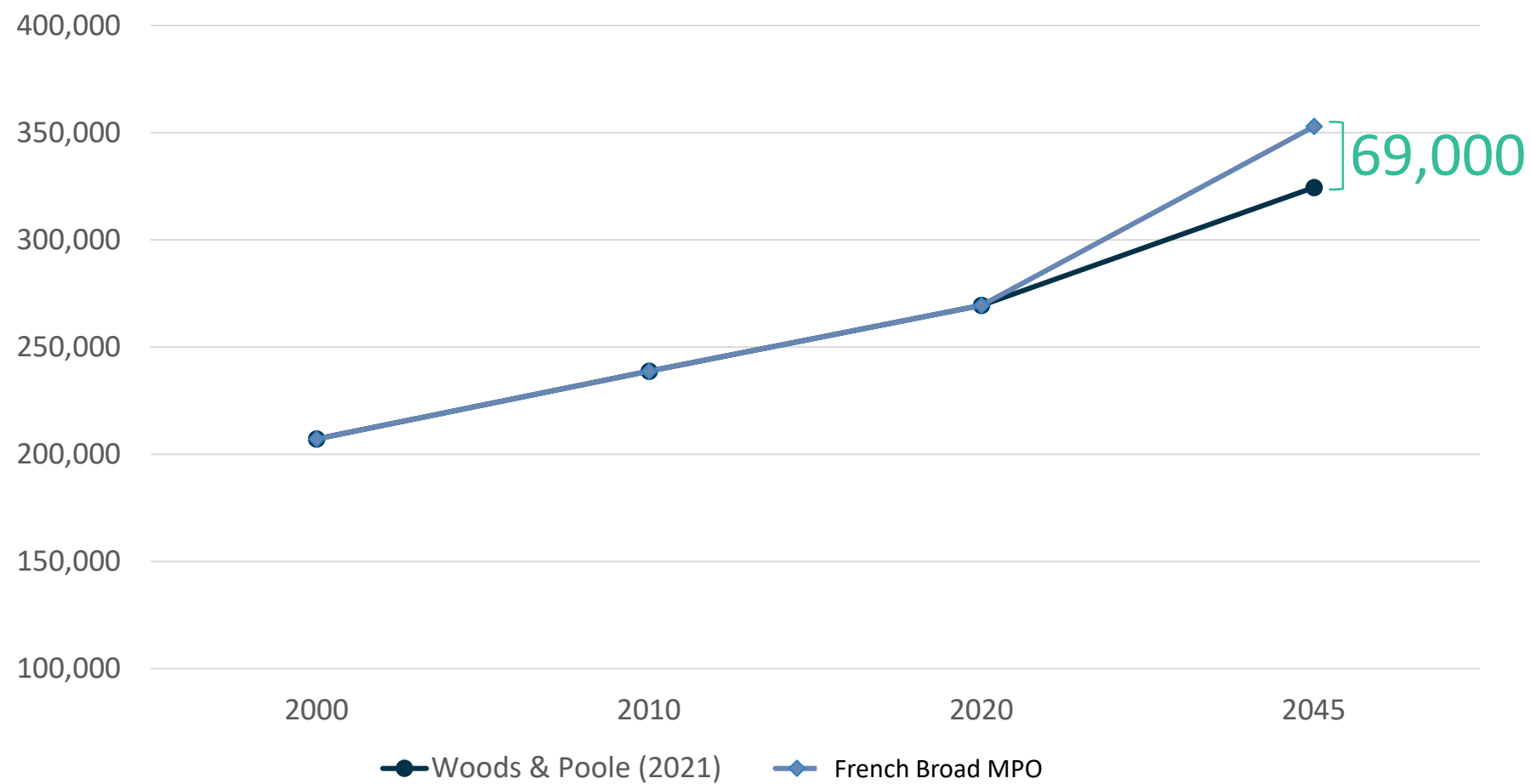
BUNCOMBE COUNTY

2/8/2022

2020 Population Density



Projected Population Growth



83,000+

High Projection, 2045

55,000+

Low Projection, 2045





HOUSING & COMMERCIAL DEVELOPMENT TRENDS

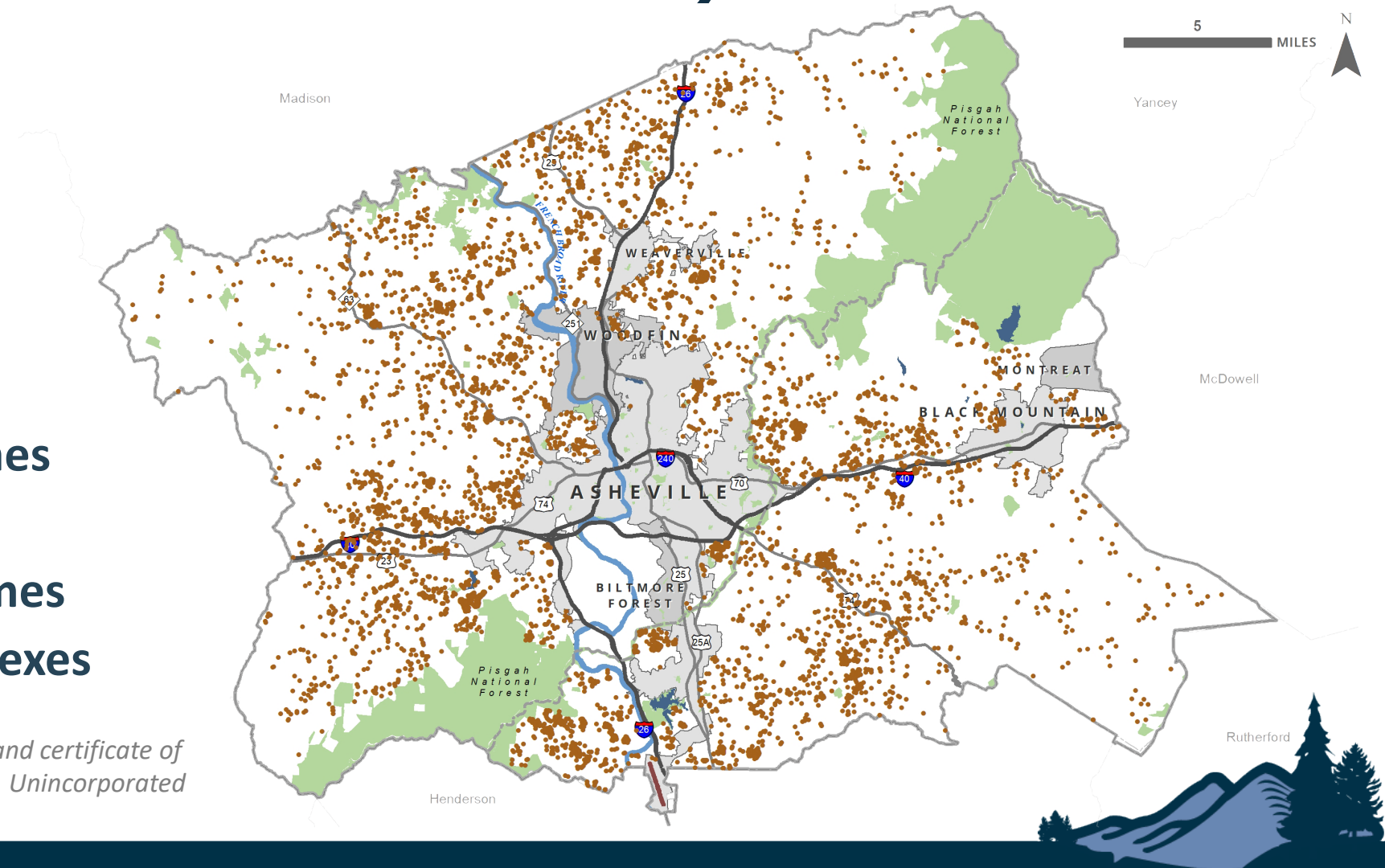


New Housing Construction (2013-November 2021)



4,511 single-family homes
358 townhouses
1,511 manufactured homes
575 modular homes/duplexes

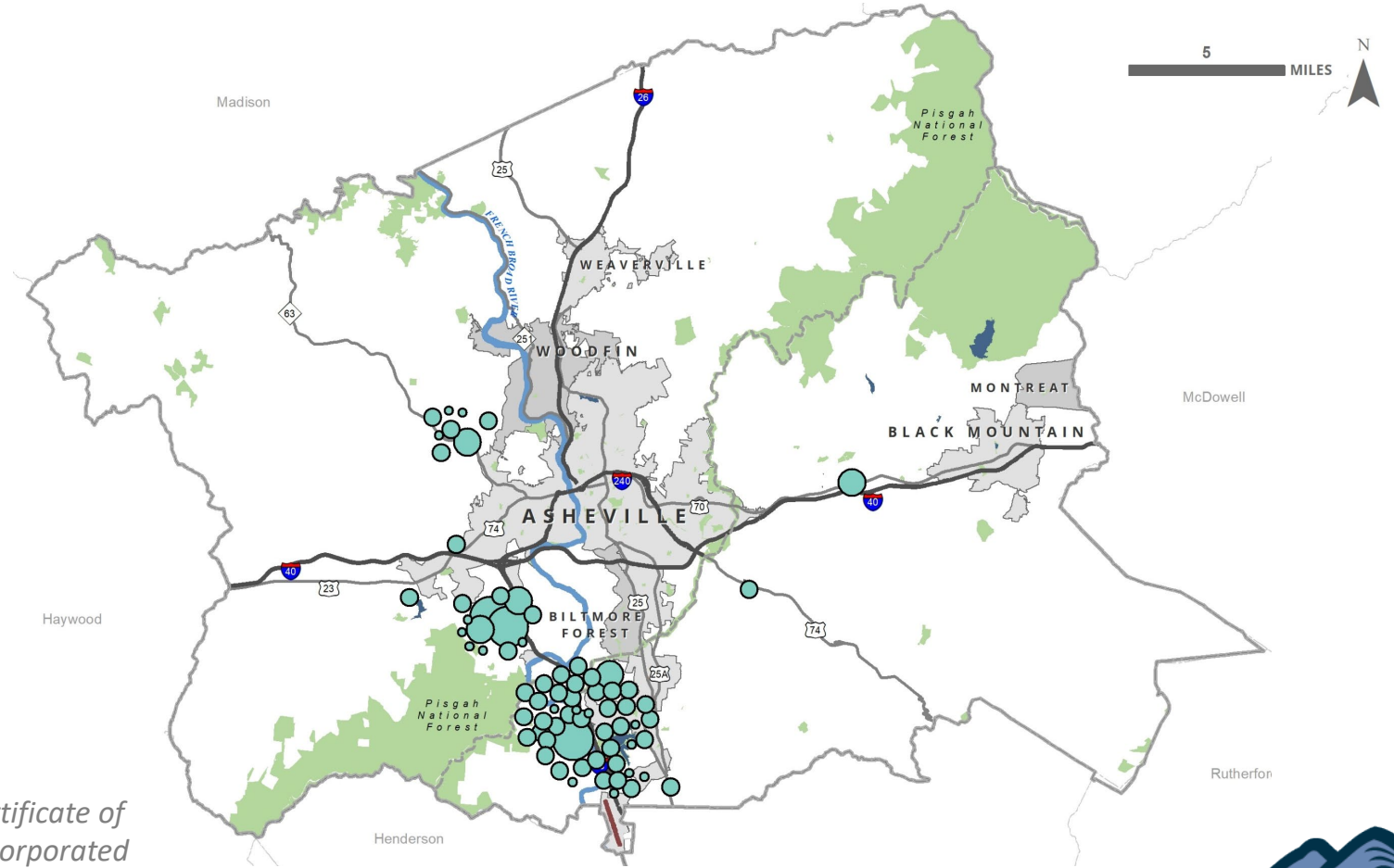
Buncombe County Building Permit Data, permits issued and certificate of occupancy issued, reported through November 16, 2021. Unincorporated areas only.



New Housing Construction (2013-November 2021)



Multifamily Residential
121 permits
2,688 apartment units



Buncombe County Building Permit Data, permits issued and certificate of occupancy issued, reported through November 16, 2021. Unincorporated areas only.



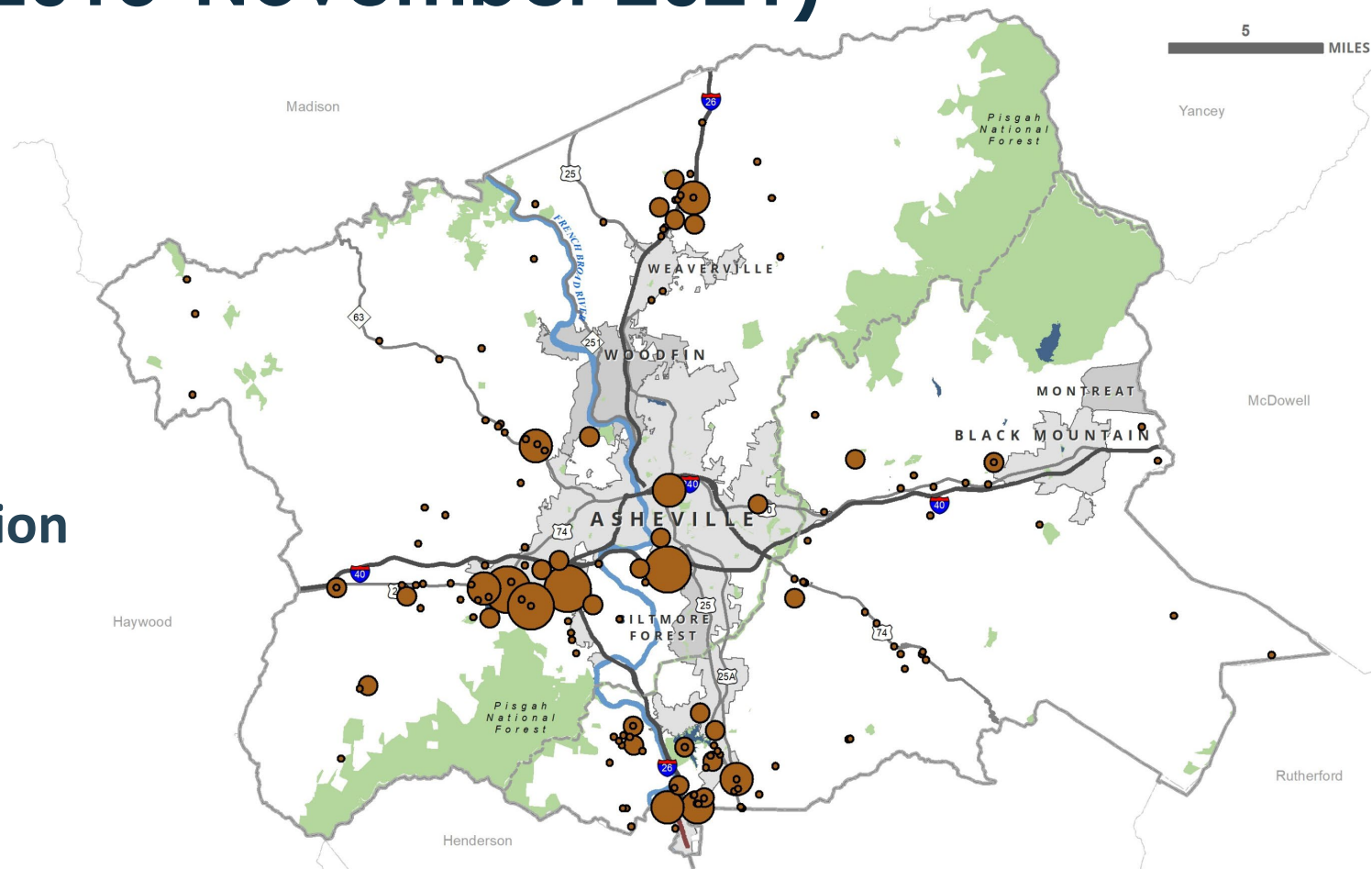
BUNCOMBE COUNTY

2/8/2022

New Commercial Construction (2013-November 2021)



New Commercial Construction
338 permits
2.45 million square feet



Buncombe County Building Permit Data, permits issued and certificate of occupancy issued, reported through November 16, 2021. Unincorporated areas only.



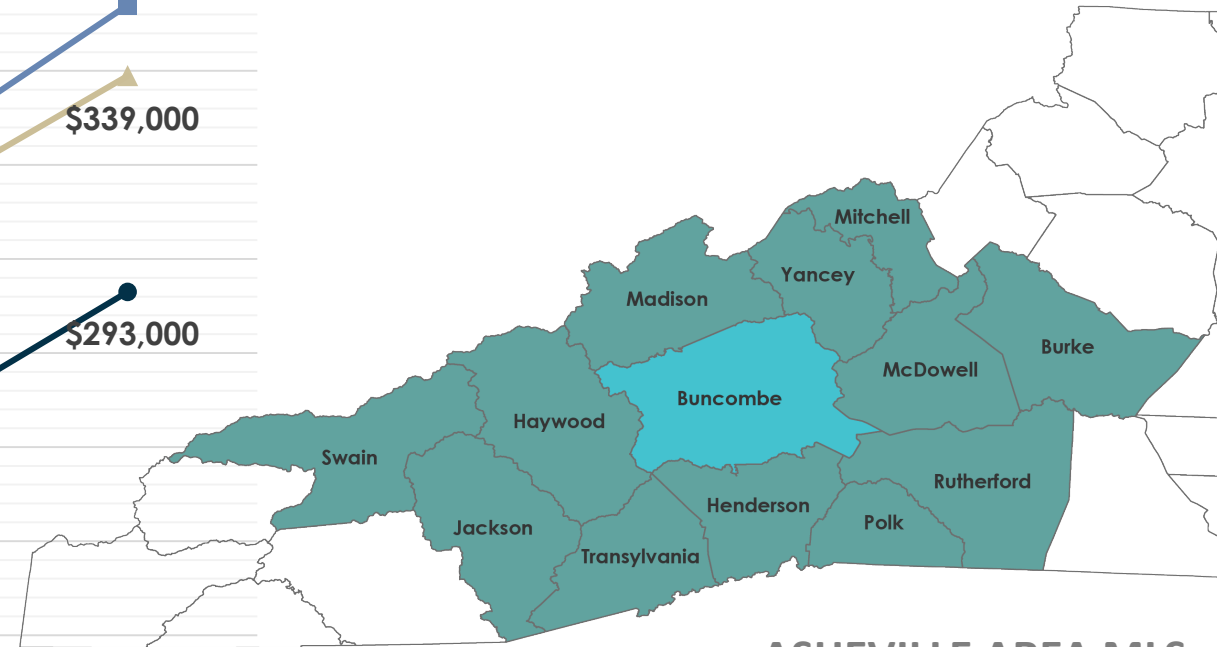
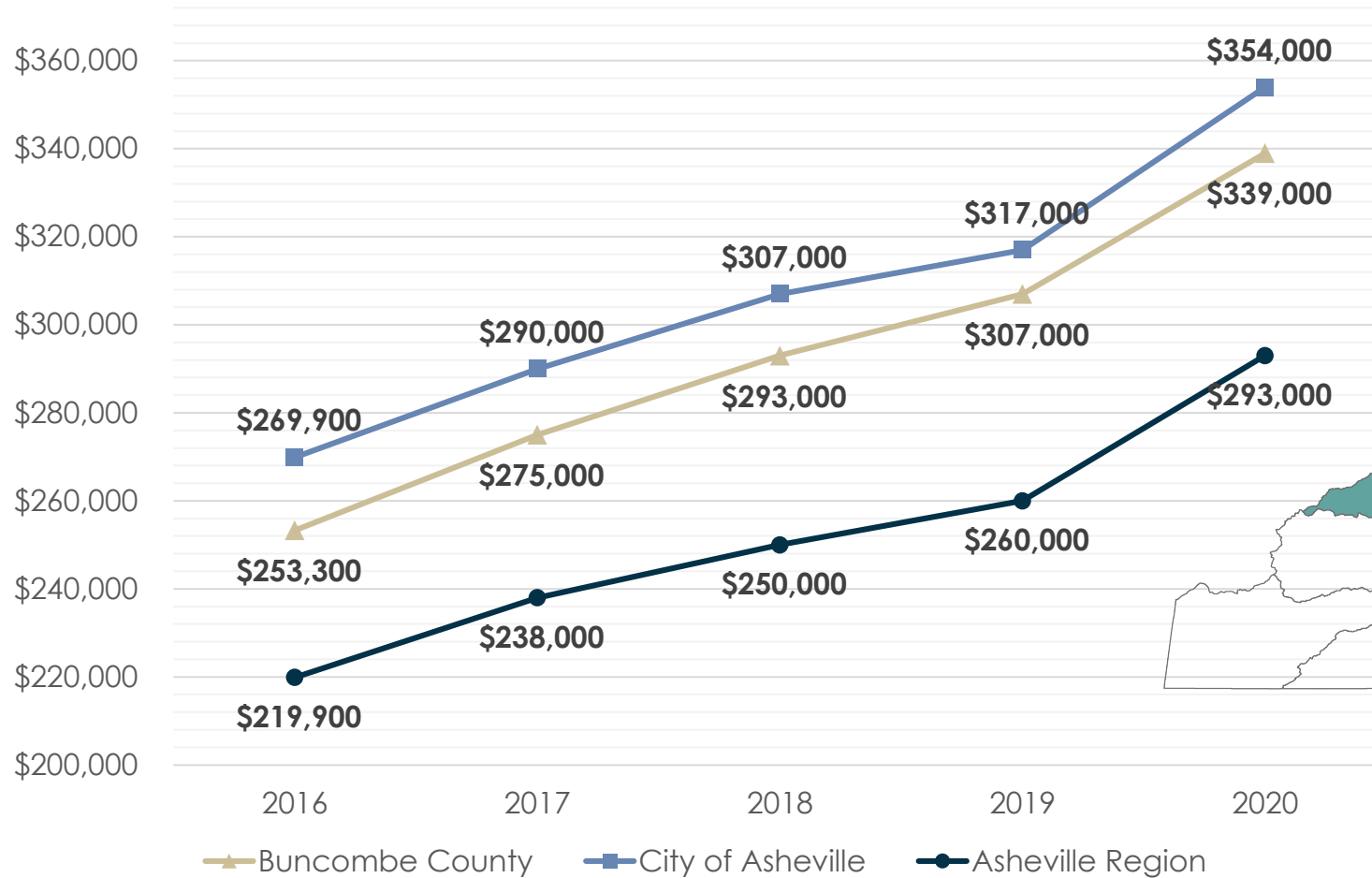
BUNCOMBE COUNTY



2/8/2022

Median Home Sales

Canopy MLS / Asheville Area



ASHEVILLE AREA MLS



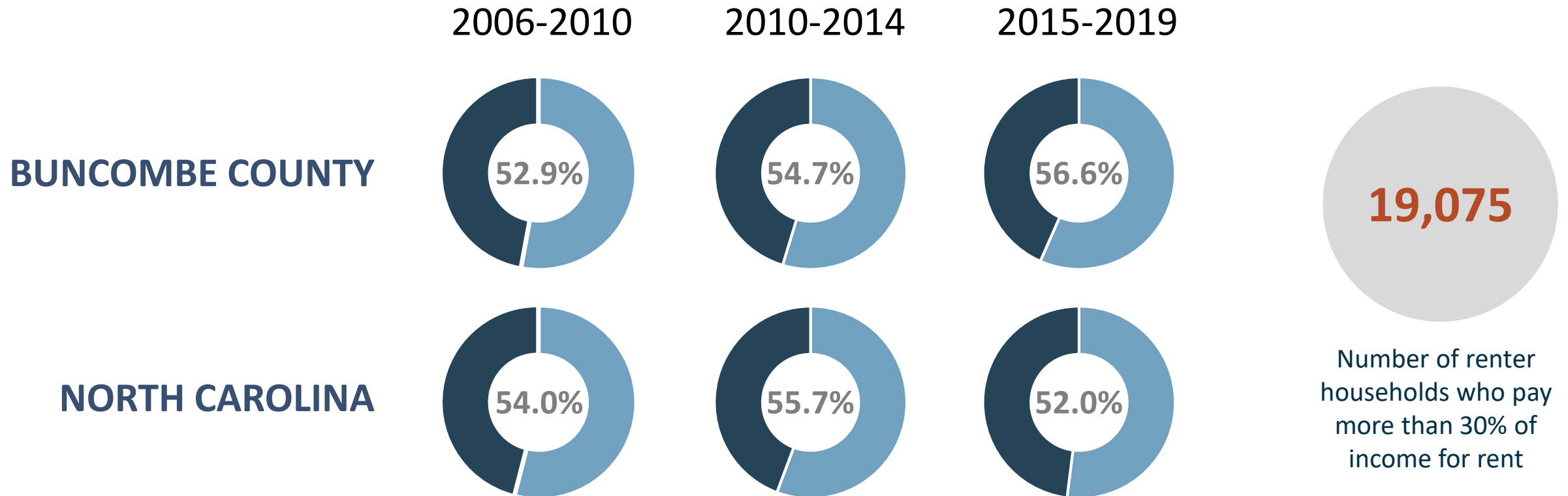
BUNCOMBE COUNTY



2/8/2022

Housing Costs

Percentage Household Rent Greater than 30% of Household Income



2019 ACS (5-year estimates)



BUNCOMBE COUNTY



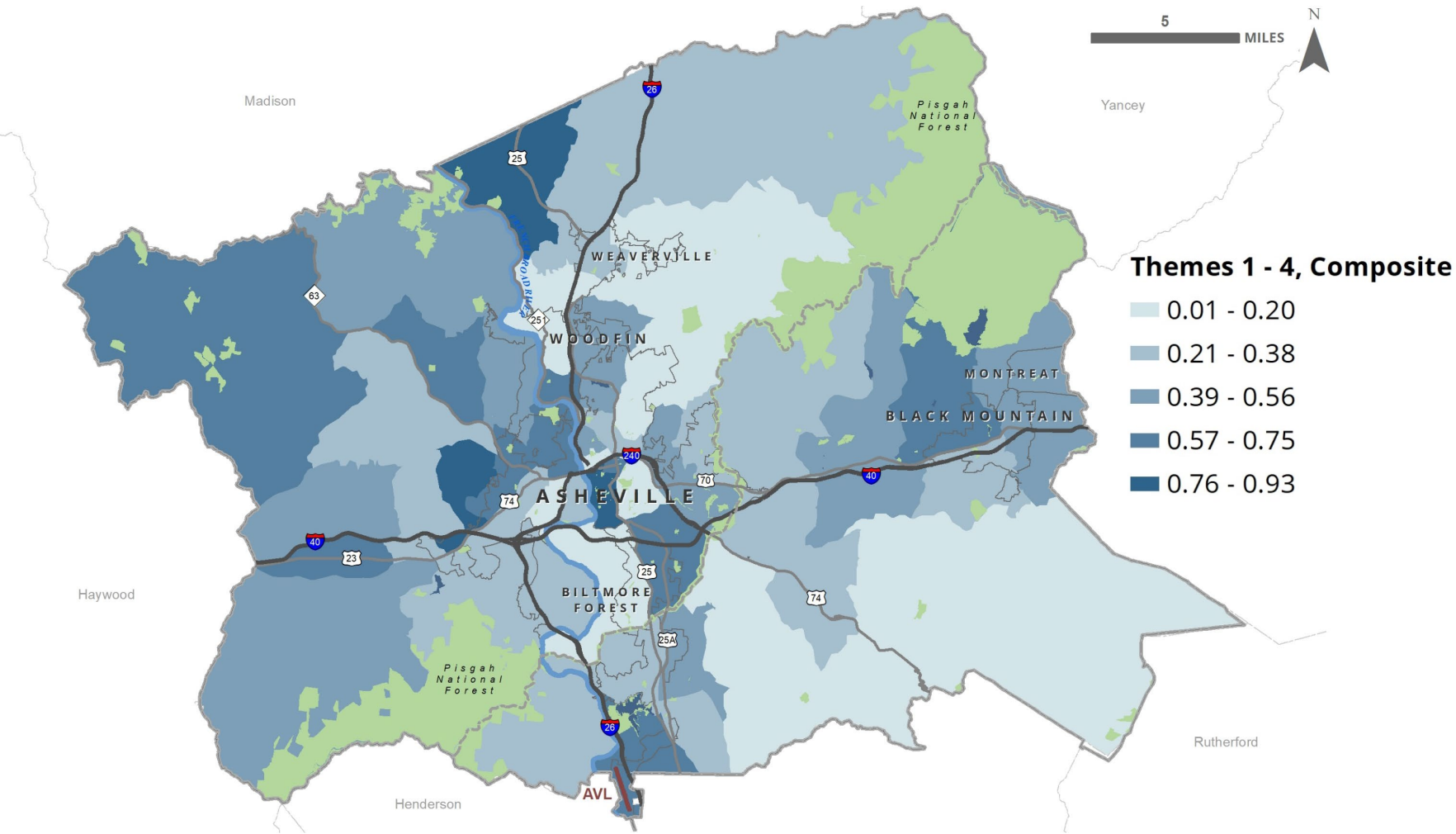
2/8/2022



VULNERABILITY



CDC Social Vulnerability Index



**Socioeconomic
Factors**



**Household
Composition &
Disability**



**Language & Minority
Status**



**Housing Type &
Transportation**

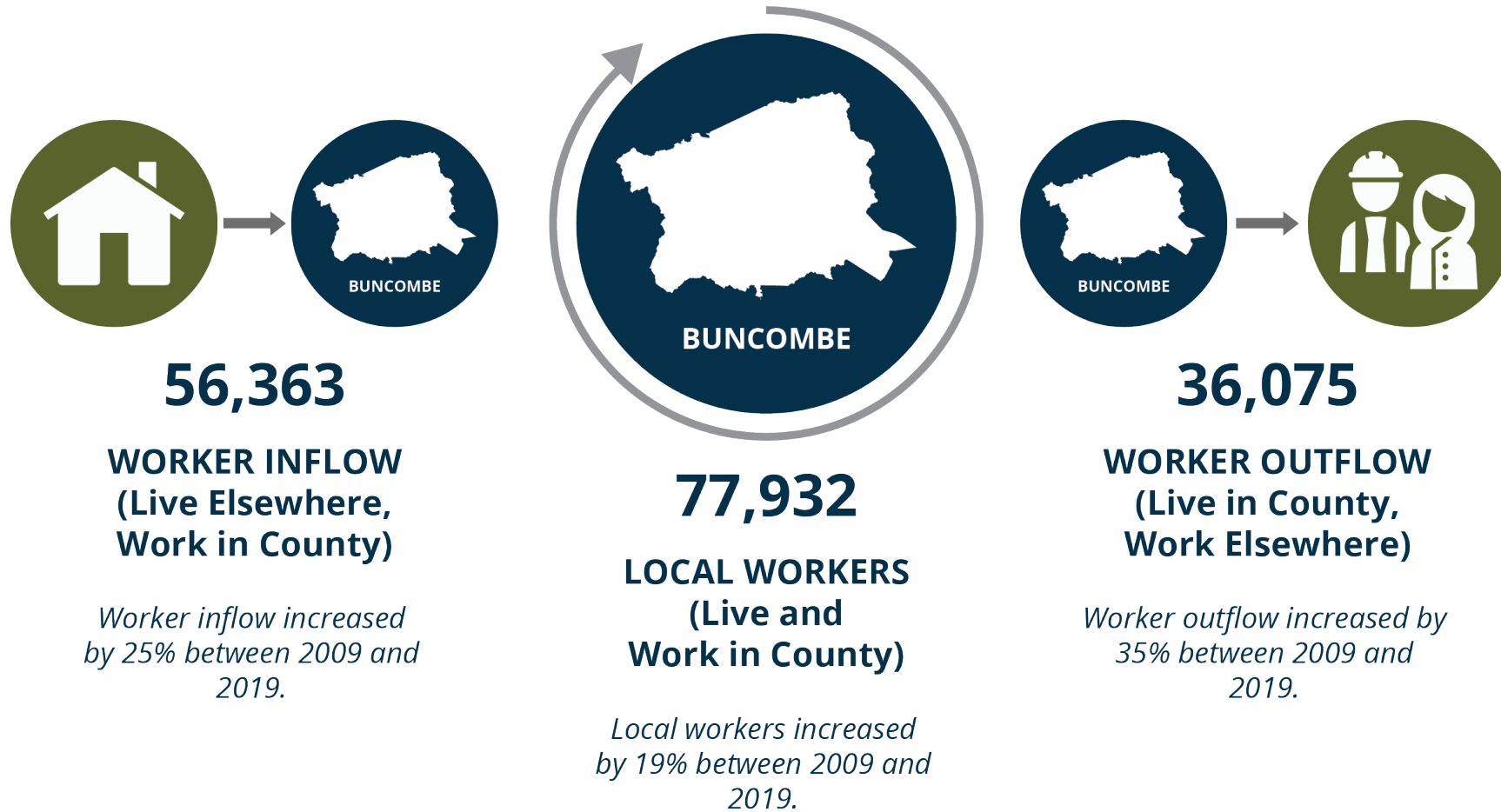




TRANSPORTATION & COMMUTING



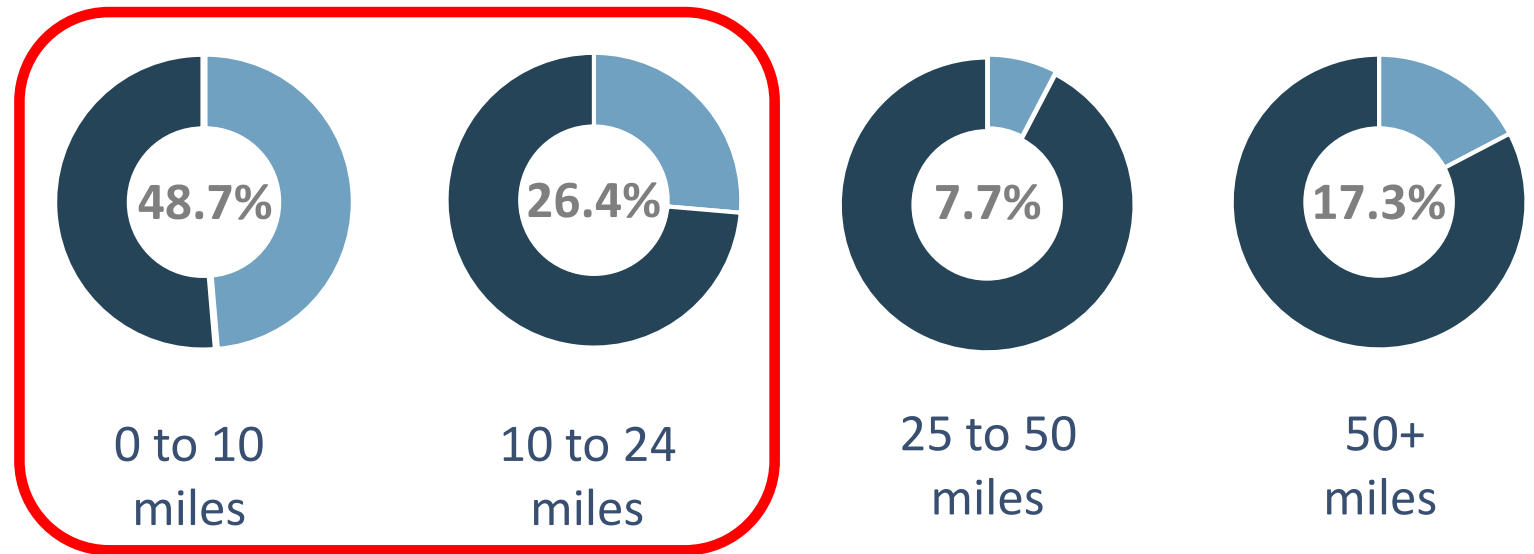
Commuting Patterns



Commuting Time

The mean travel time to work is about **20 minutes** for workers employed in Buncombe County.

Commuting Distance



75%
of workers



Transportation Planning Challenges



~69k + people
in 24 years



increased
job growth



increased
services & shopping



increased
vehicle trips



limited land
to expand or build
roads



limited
funding
sources



slow project
development
process



limited
land use &
transport policies



limited
multimodal
options

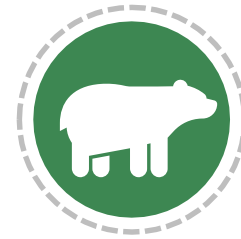
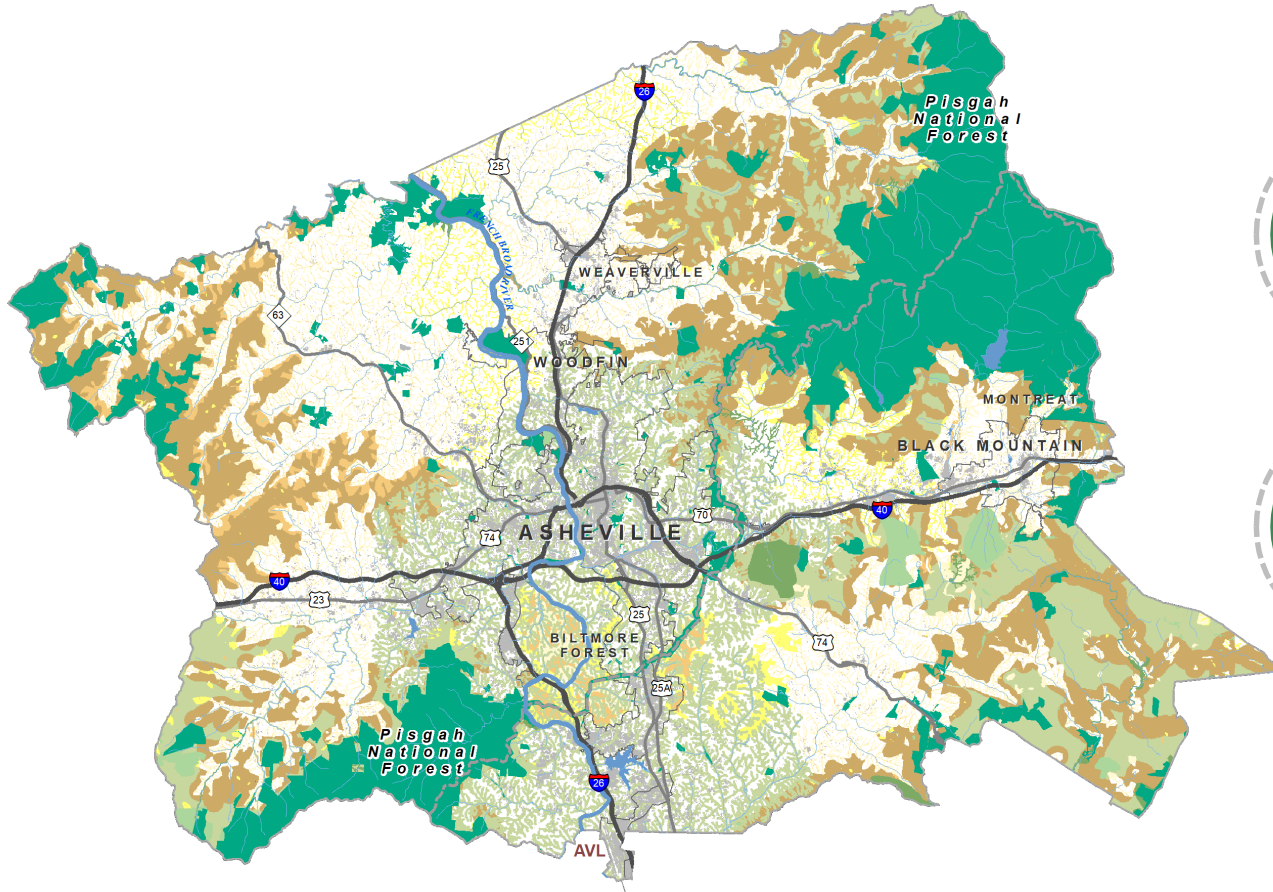




NATURAL ASSETS, SUSTAINABILITY, RECREATION, & HEALTH

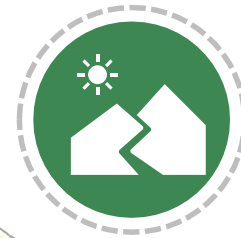


Natural Assets



Flora and Fauna

Major wildlife corridors, biodiversity and protected species, tree canopy



Scenic Vistas

Protection of public viewsheds

Biodiversity & Wildlife Habitat Assessment

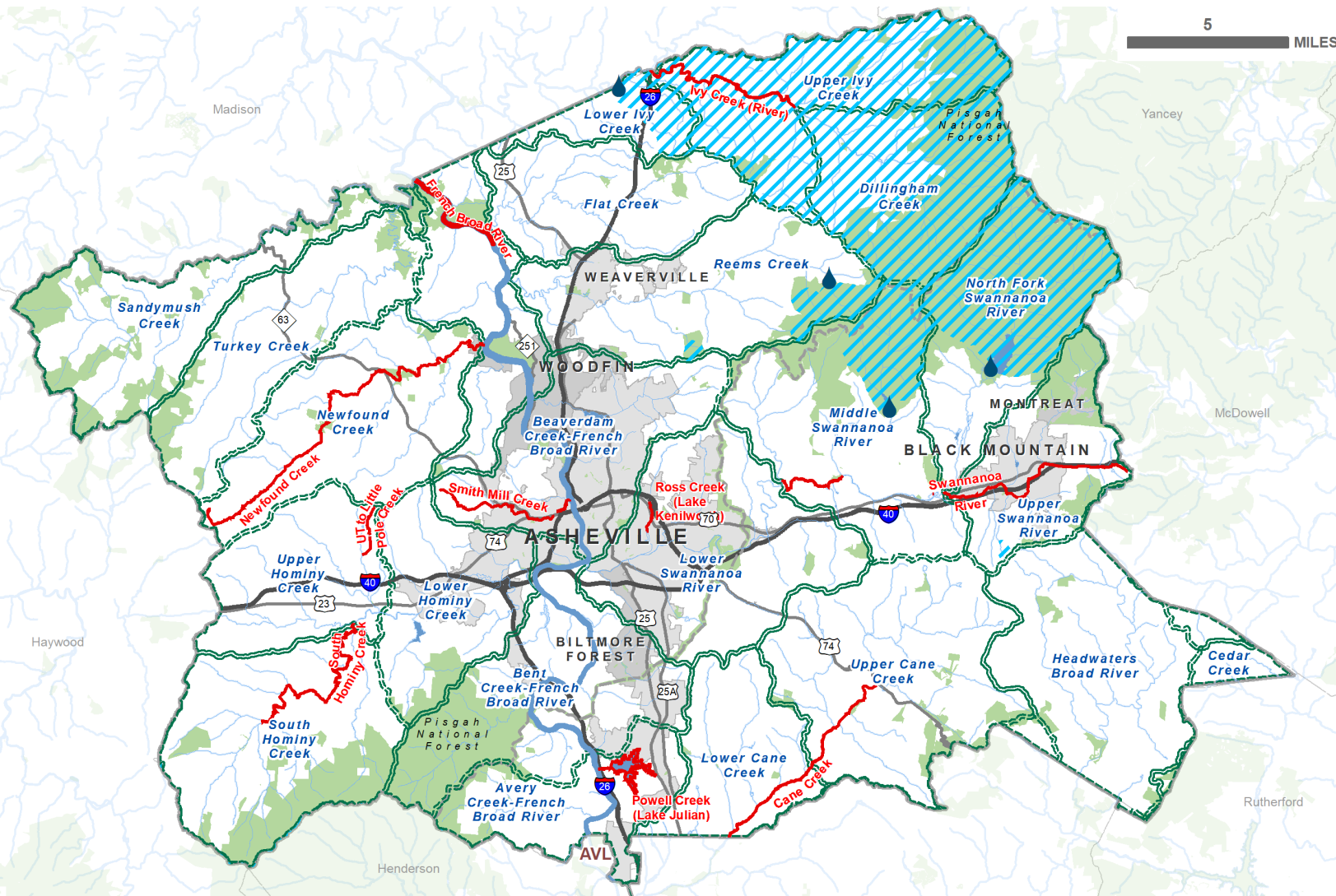
Relative Conservation Value

- 9-10 (Maximum)
- 8
- 7
- 6
- 5
- 2-4
- 1 (Moderate)
- 0 (Unrated)
- Impervious surface >20%

Protected Lands



Water Resources



Water Resources
Drinking water supply

- HUC 12 Watersheds (with labels)
- Drinking Water Supply Watersheds
- Lakes and Reservoirs
- Impaired Waterways
- French Broad River
- Major Streams
- Public Water Supply Water Sources

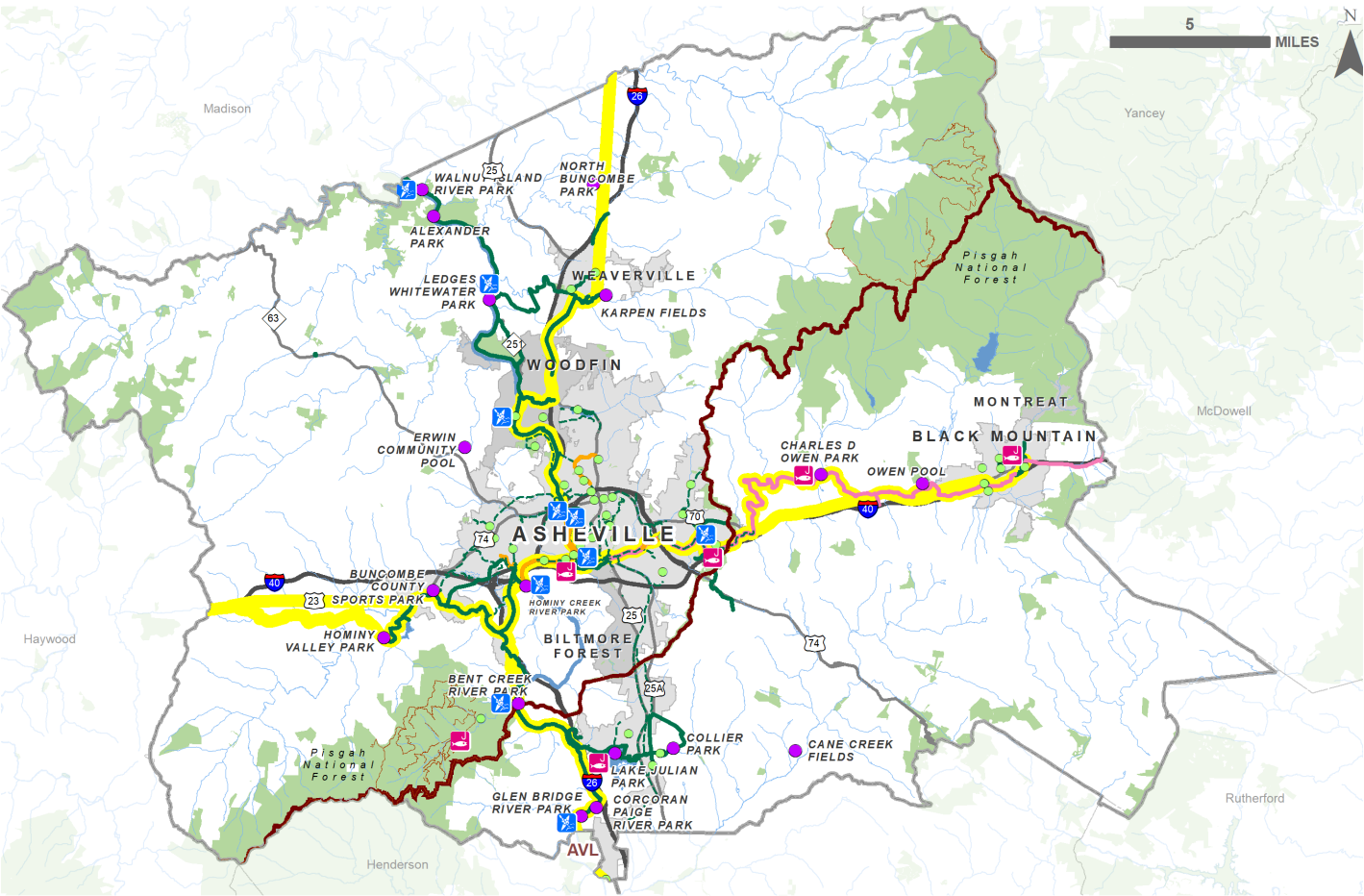


BUNCOMBE COUNTY



12/8/2022
2021

Open Space & Recreation



PARKS



GREENWAYS & TRAILS



BLUEWAYS



PROTECTED OPEN SPACE

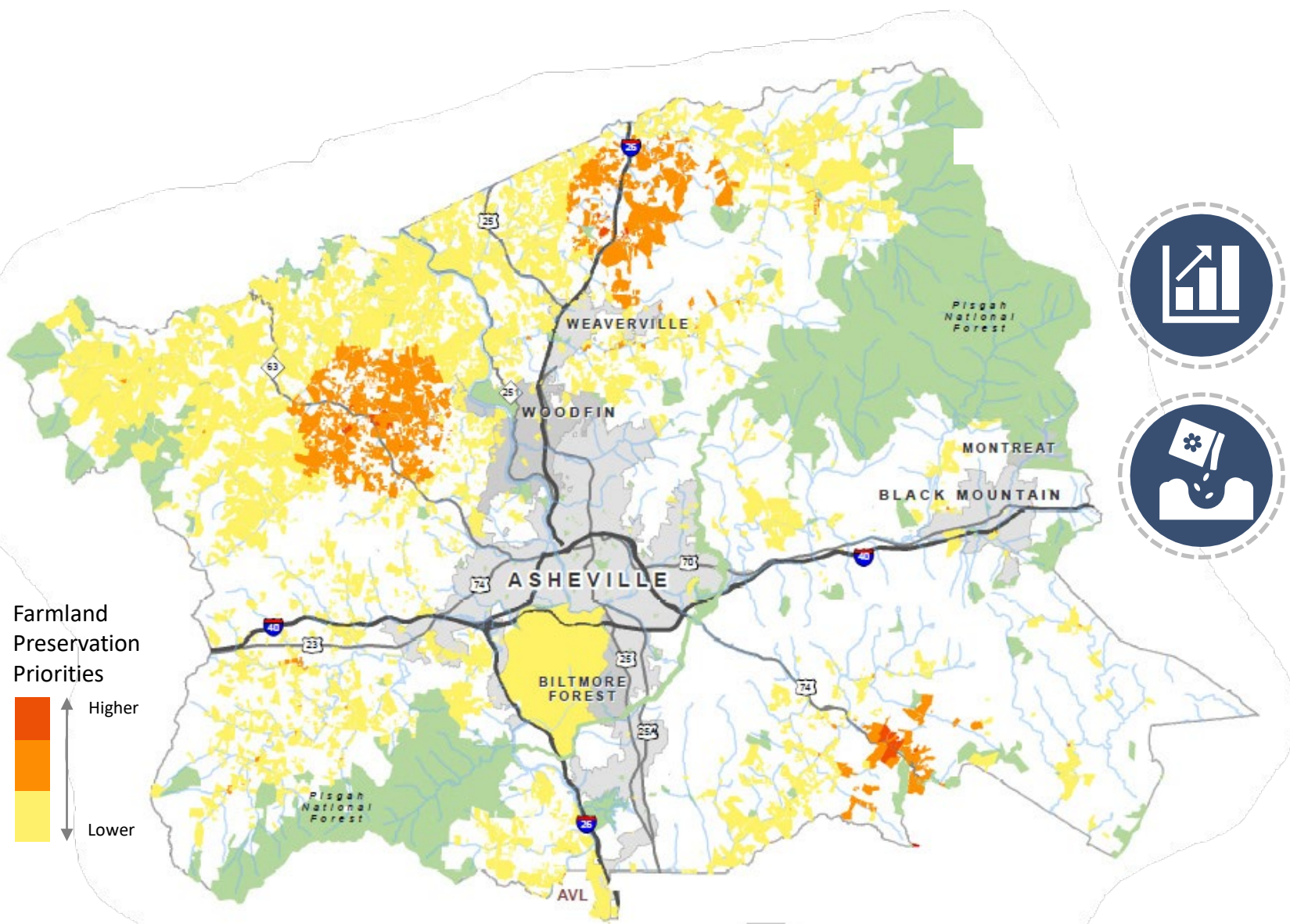
- Mountains-to-Sea Trail (existing)
- Hellbender Regional Trail
- Fonta Flora State Trail (Proposed)

- Greenways**
- City of Asheville Greenways (Existing)
 - City of Asheville Greenways (Proposed)
 - Buncombe County Greenways (Planned)

- Parks**
- Buncombe County Parks
 - Other Public Parks
- Water Access Points**
- Boat or Canoe Access
 - Public Fishing Pier



Working Lands



GROWTH &
DECLINE



SUPPORTING
FARMERS



AGRICULTURAL
PRESERVATION



STEWARDSHIP

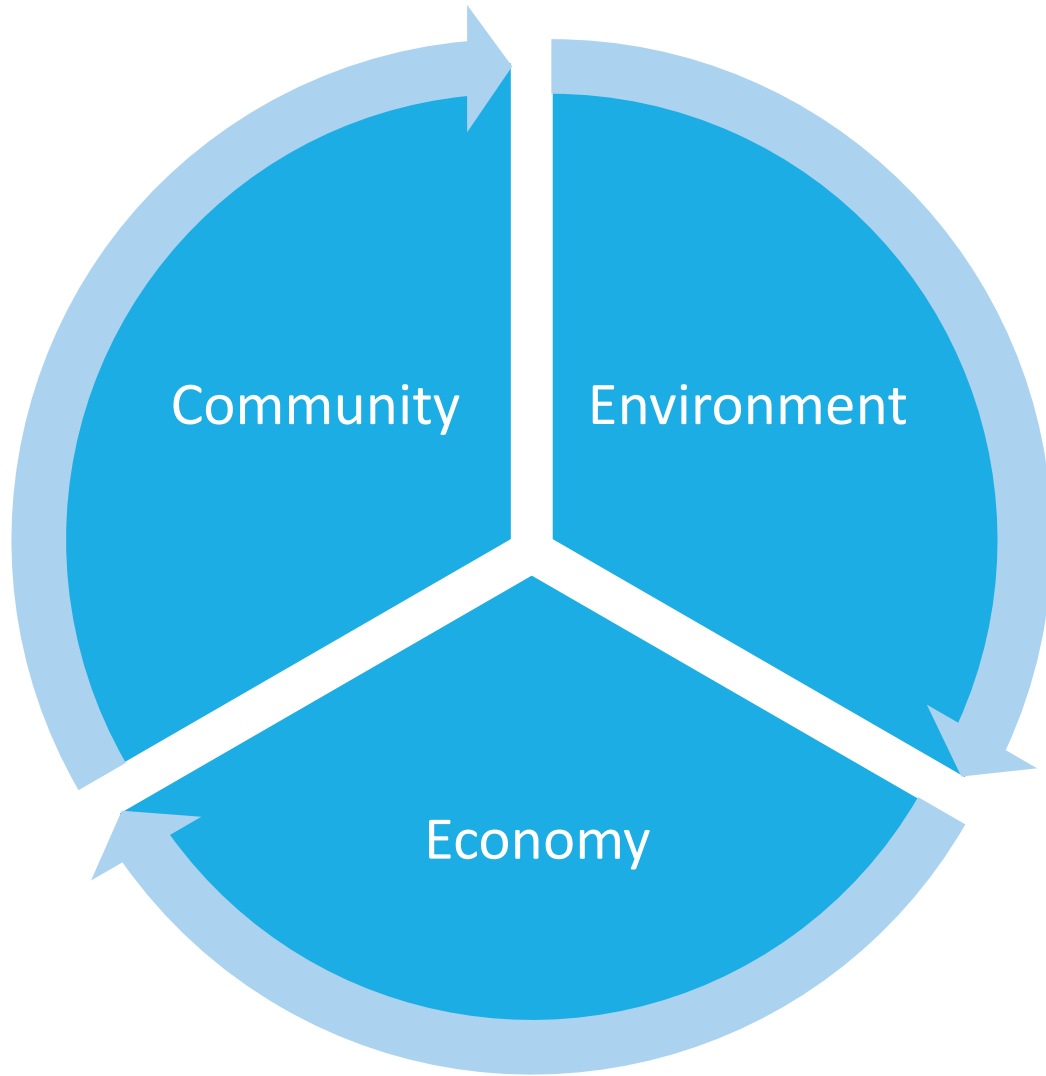


BUNCOMBE COUNTY



12/8/2022
2021

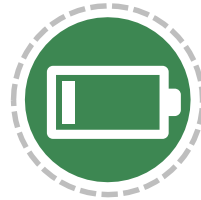
Sustainability



Planning for Holistic Sustainability



Buncombe County Renewable Energy Plan: reach **100%** renewable energy for the community by 2042



If no action is taken, only **8.1%** of the community's electrical supply will come from renewable energies by 2042



Community Health



Buncombe County Priority #1:
Mental Health



Buncombe County Priority #2:
Maternal/Birth Outcomes & Infant Mortality

Social Determinants of Health
Copyright-free

 Healthy People 2030



BUNCOMBE COUNTY



2/8/2022



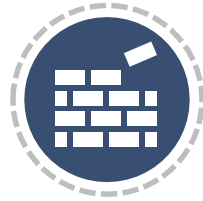
HAZARD MITIGATION & RESILIENCE



Hazard Mitigation and Resilience



Resilience



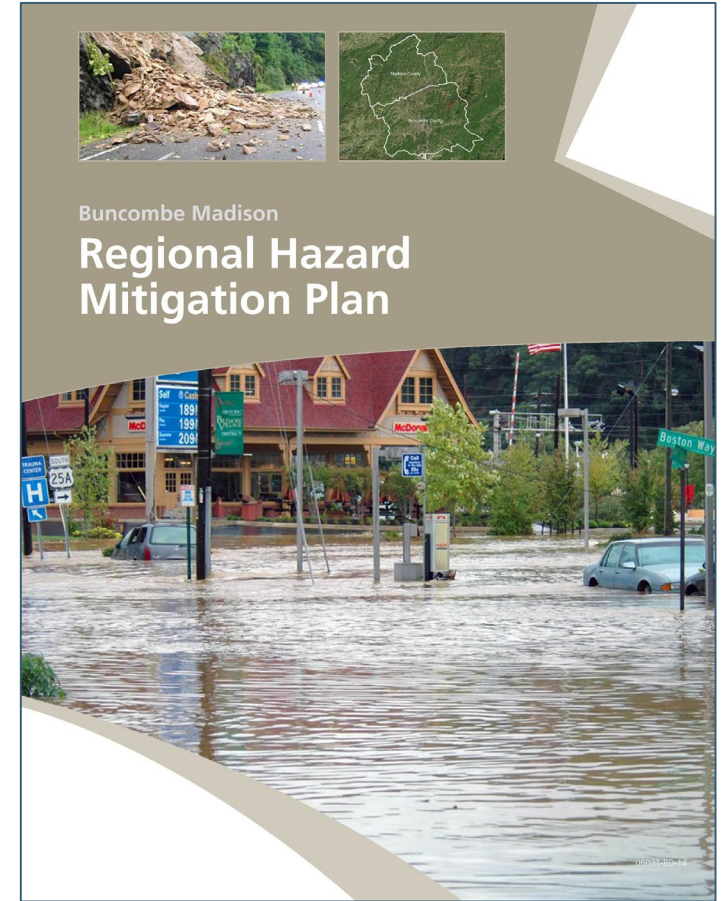
Hazard Mitigation



Hazards



Integration into
Comprehensive Plan



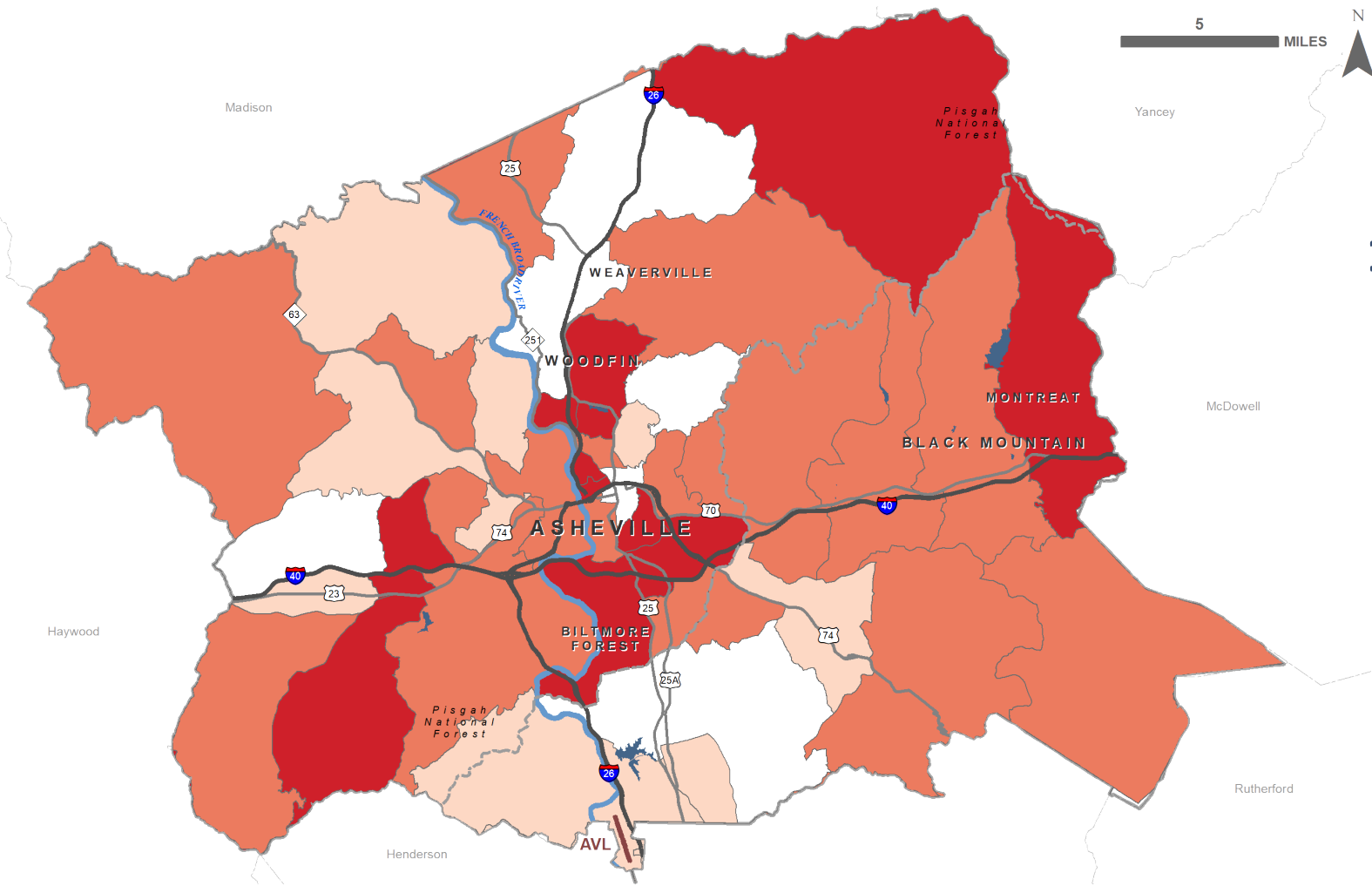
BUNCOMBE COUNTY



2/8/2022

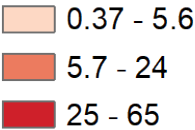
Hazard Vulnerability: Flood Risk

Commercial Property and Flooding Example



13% of all commercial properties have high vulnerability and risk to flooding

Commercial Property and Flooding
Percent medium-high vulnerability and risk



BREAKOUT ROOM ACTIVITIES

- What are your goals for Buncombe's future?
- What places would you like to protect, grow, change, or replicate?

<https://engage.buncombecounty.org/C7441>

