



# PRETRIAL SERVICES ANNUAL REPORT

## Court Services

Public Safety Assessment Volume, Risk Factors, and Concurrency

## Community Supervision

Opened and Closed Supervisions, Technical Violation Rate, Public Safety Rate, Appearance Rate

Report Period: **Fiscal Year 2021**



# Fiscal Year 2021 Public Safety Assessment Volume

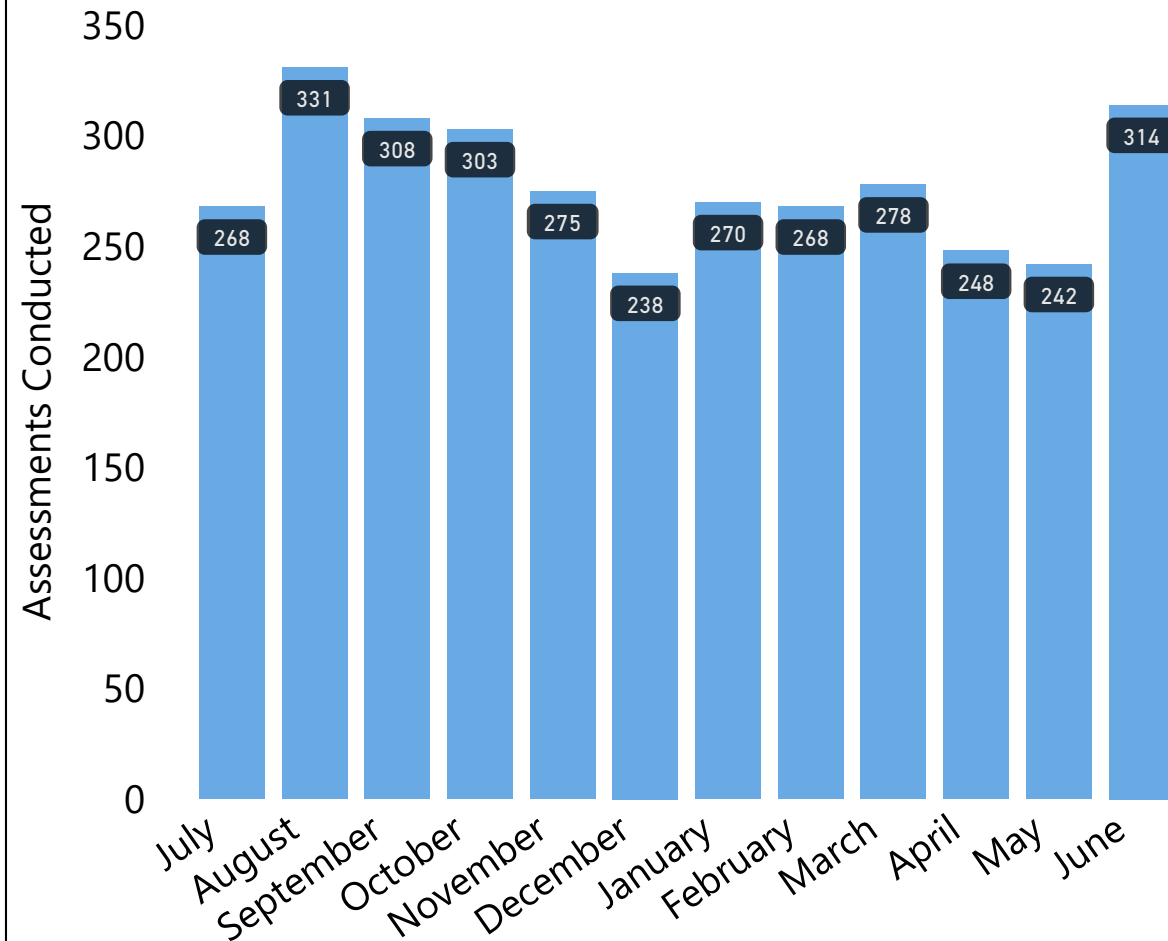
**3,343** Assessments Conducted

**2,474** Unique People Assessed

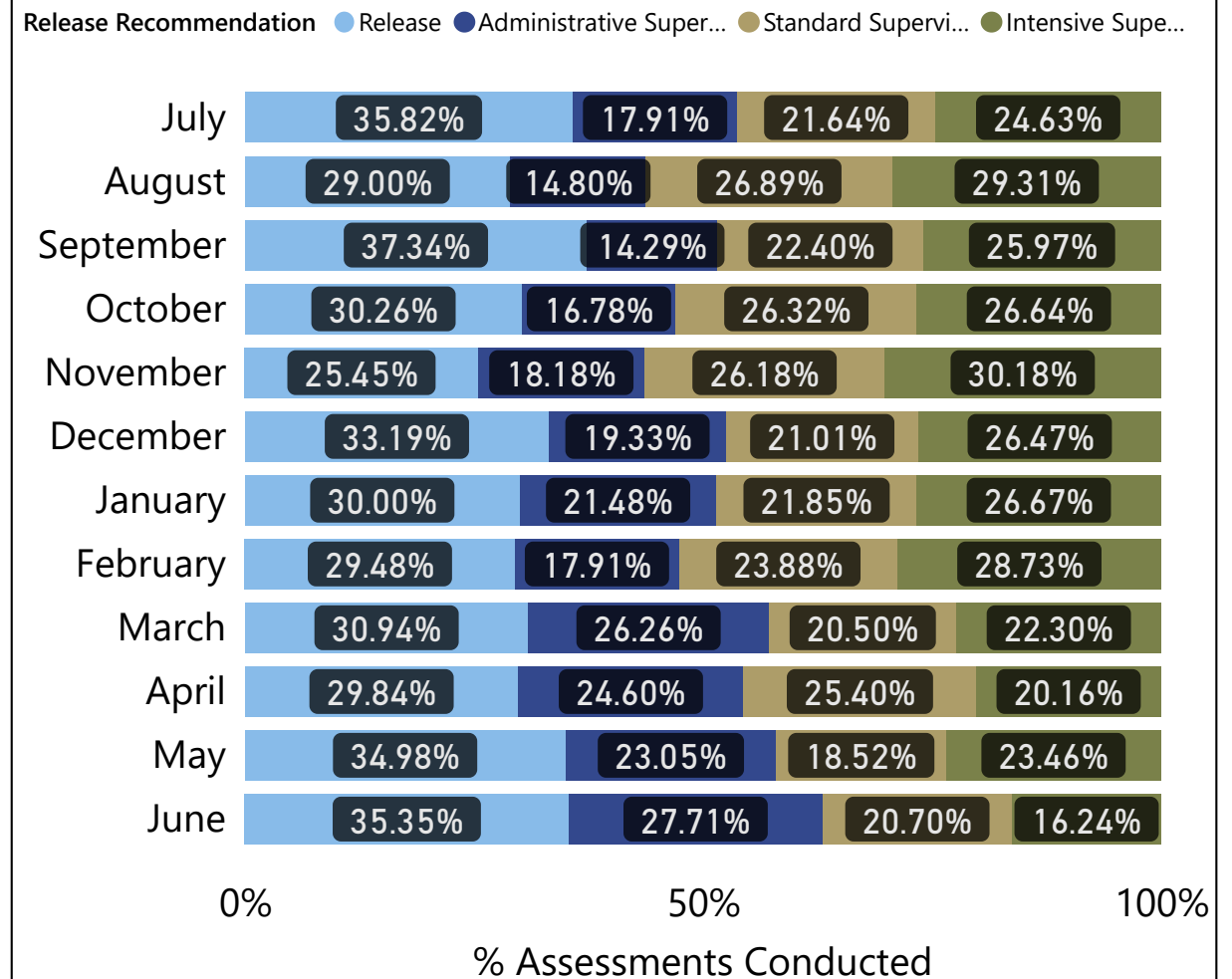
**557** People Assessed Multiple Times

**12** Staff Overrides on PSA/Bond Report

Volume of PSAs by Month



PSA Recommendation by Month



# Fiscal Year 2021 PSA Accuracy

2761

PSAs Audited

88

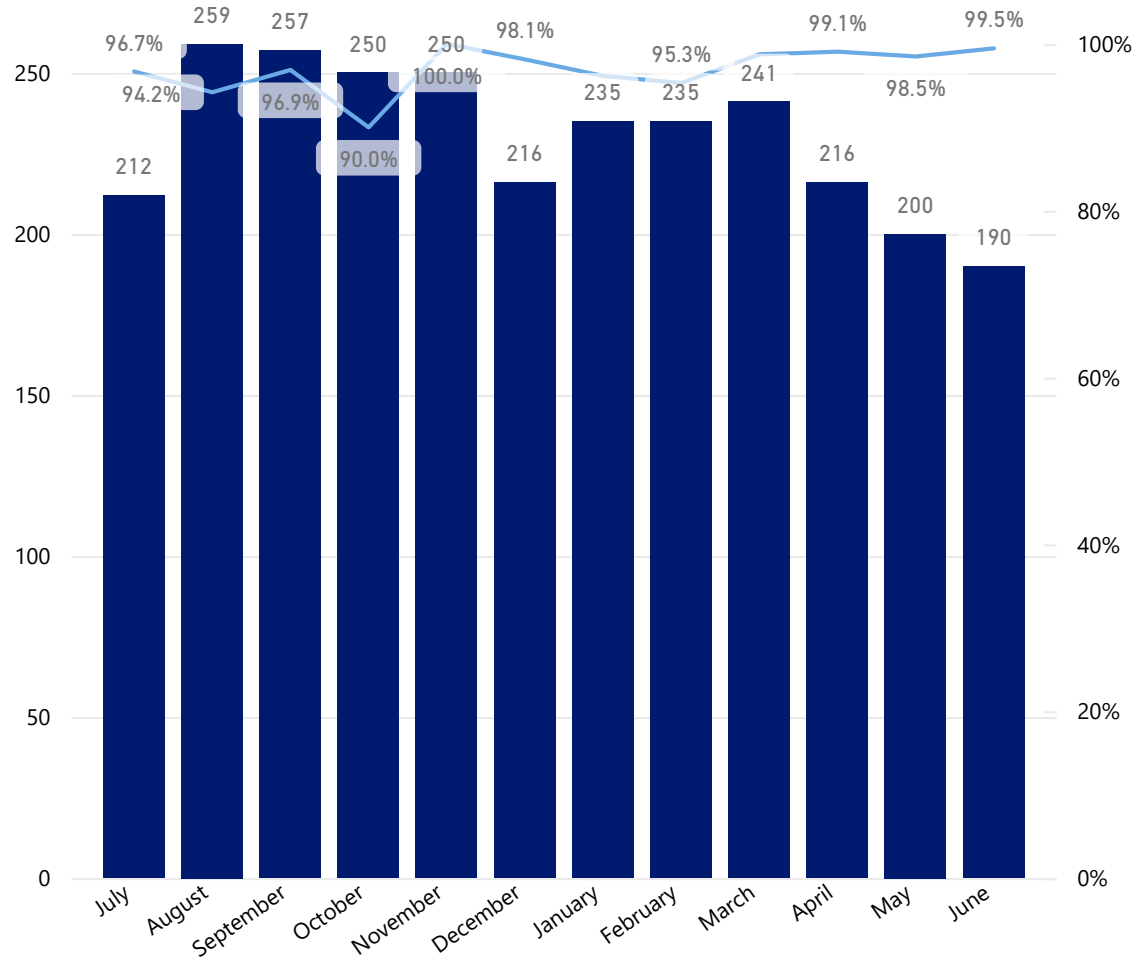
PSAs with Errors

96.8%

Accuracy Rate

PSAs Audited and Accuracy Rate by Month

● Number of PSAs Audited ● Accuracy Rate



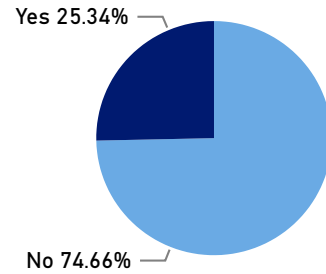
## PSA Risk Factors

The Public Safety Assessment (PSA) is a standardized assessment that predicts failure to appear (FTA) in court for a pending charge, a new criminal arrest (NCA) while on pretrial release, and a new violent criminal arrest (NCA Violent) while on pretrial release.

Buncombe County Release Conditions Matrix

Failure to Appear (FTA) Scaled Score	New Criminal Activity (NCA) Scaled Score					
	1	2	3	4	5	6
1 (90% No New Criminal Activity)	WPA or Unsecured (90% No New Criminal Activity)	WPA or Unsecured (85% No New Criminal Activity)	WPA or Unsecured (77% No New Criminal Activity)	WPA or Unsecured (70% No New Criminal Activity)	WPA or Unsecured (52% No New Criminal Activity)	WPA or Unsecured (45% No New Criminal Activity)
2 (85% Appear to Court)	WPA or Unsecured (no pretrial supervision)	WPA or Unsecured (no pretrial supervision)	WPA or Unsecured (no pretrial supervision)	Unsecured or Administrative	Standard	
3 (80% Appear to Court)		WPA or Unsecured (no pretrial supervision)	WPA or Unsecured (no pretrial supervision)	Unsecured or Administrative	Standard	Standard or Intensive
4 (69% Appear to Court)		WPA or Unsecured (no pretrial supervision)	Unsecured or Administrative	Administrative or Standard	Standard	Intensive
5 (65% Appear to Court)		WPA or Unsecured (no pretrial supervision)	Unsecured or Administrative	Administrative or Standard	Standard or Intensive	Intensive
6 (60% Appear to Court)				Standard	Standard or Intensive	Intensive

% NCA Violent Flag



Failure to Appear	NCA 1	NCA 2	NCA 3	NCA 4	NCA 5	NCA 6	Total
FTA 1	214	70					284
FTA 2	21	172	200	132			525
FTA 3		78	235	247	144	51	755
FTA 4		51	133	204	283	125	796
FTA 5		3	43	175	227	153	601
FTA 6				52	78	254	384
<b>Total</b>	<b>235</b>	<b>374</b>	<b>611</b>	<b>810</b>	<b>732</b>	<b>583</b>	<b>3,343</b>

Volume % by FTA Risk

Failure to Appear ● FTA 1 ● FTA 2 ● FTA 3 ● FTA 4 ● FTA 5 ● FTA 6



Volume % by NCA Risk

New Criminal Activity ● NCA 1 ● NCA 2 ● NCA 3 ● NCA 4 ● NCA 5 ● NCA 6



# Fiscal Year 2021 Concurrency

1,737

Opened Supervision

586

Judicial Override

66.3%

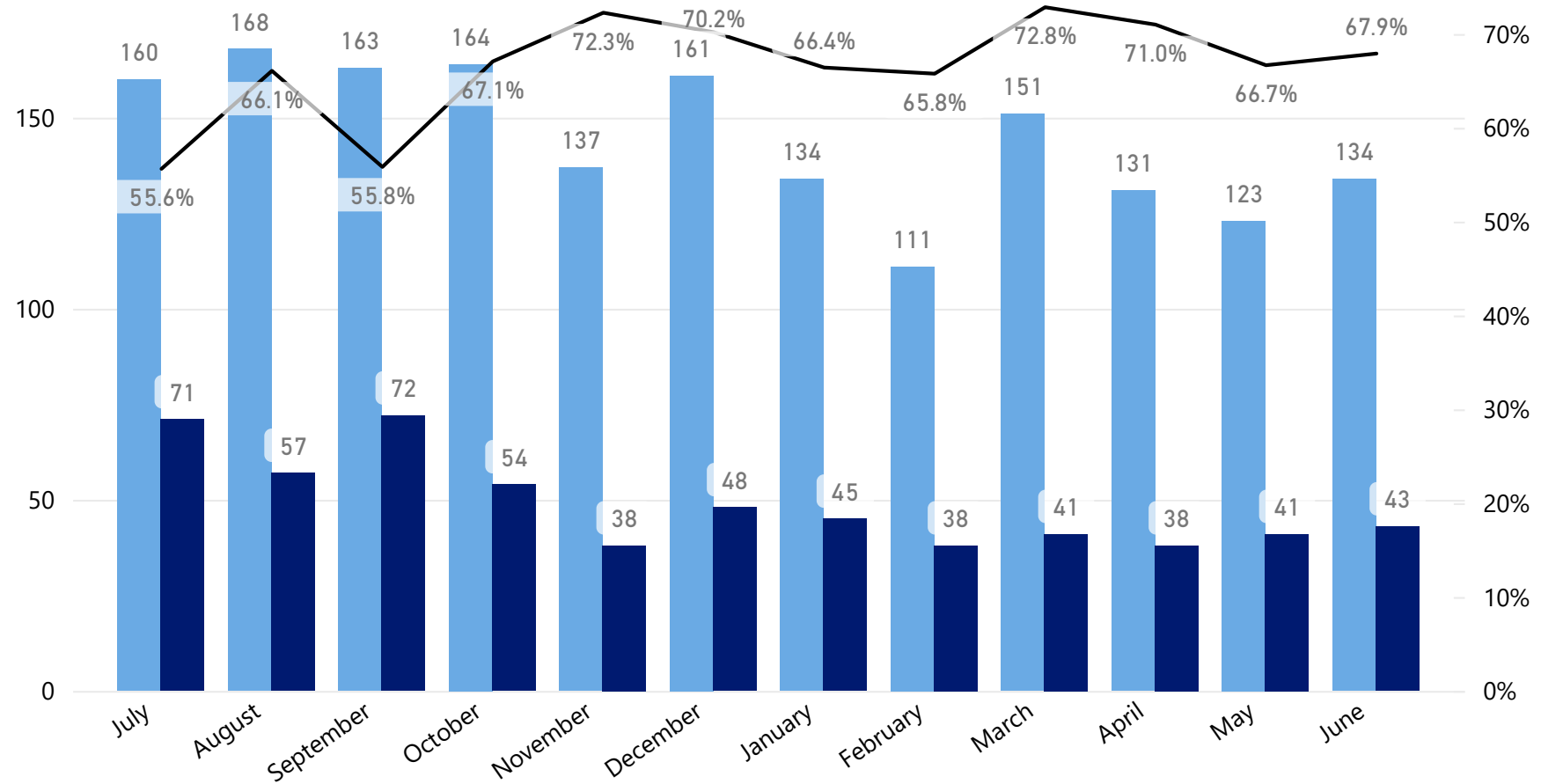
Concurrency Rate

The concurrency rate indicates the percent of supervisions opened in which the recommendation from the PSA aligns with the release decision made by the judicial official. It is the number of supervisions with a judicial override divided by all opened supervisions.

## Supervisions Where Release Recommended

Supervision Level	Number of Supervisions
Administrative Supervision	482
Standard Supervision	20
Intensive Supervision	12
Awaiting Release	23
<b>Total</b>	<b>537</b>

● Opened Supervisions ● Number of Supervisions with Judicial Override ● Concurrency Rate



## Concurrency Matrix (Release Recommendation Across the Top)

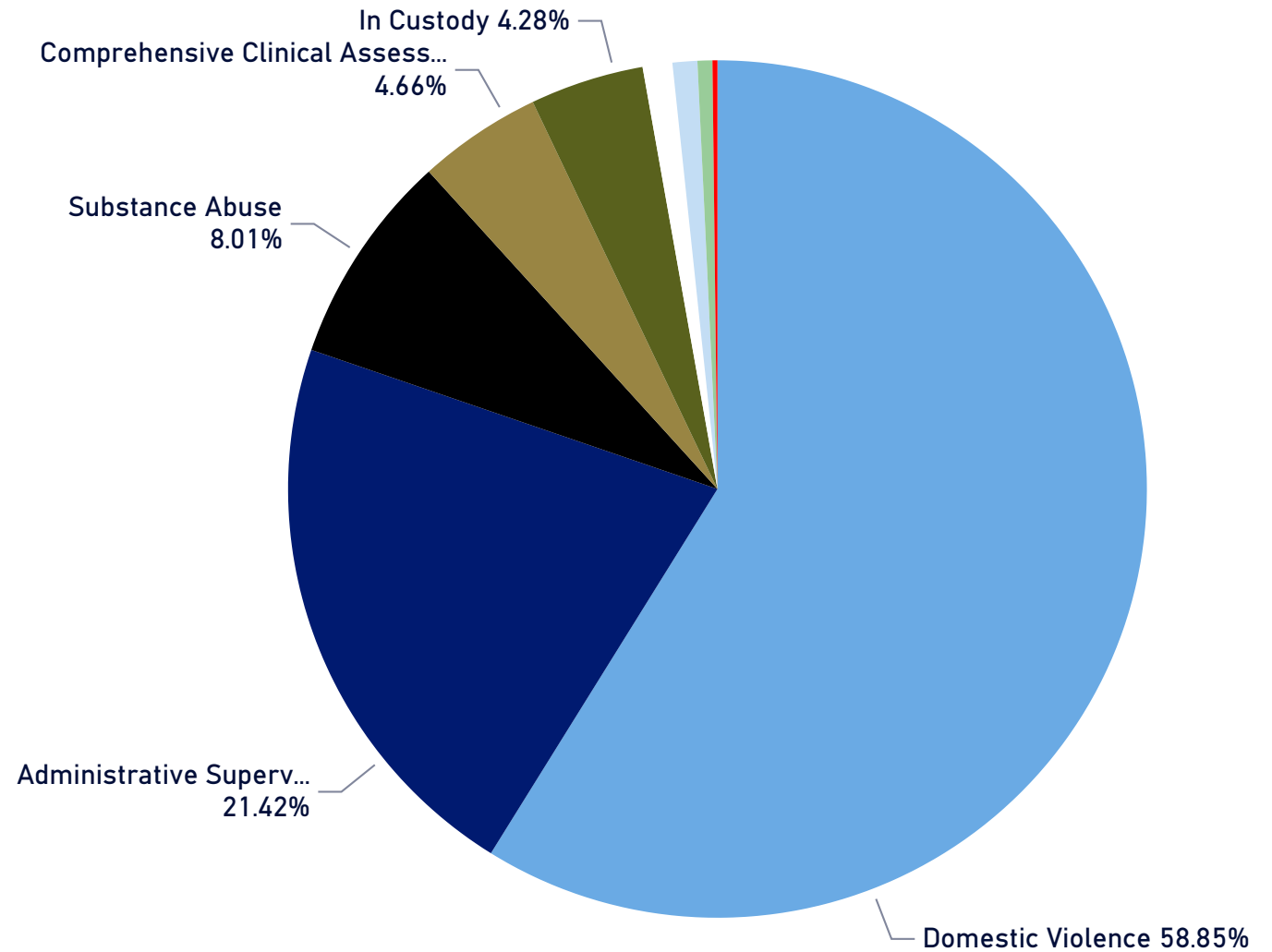
Release Decision	None	Release	Administrative Supervision	Standard Supervision	Intensive Supervision	Total
None	187					<b>187</b>
Release		1				<b>1</b>
Administrative Supervision	45	521	271	5		<b>842</b>
Standard Supervision	87	11	12	313	4	<b>427</b>
Intensive Supervision	45	6	9	19	389	<b>467</b>
<b>Total</b>	<b>348</b>	<b>537</b>	<b>291</b>	<b>333</b>	<b>392</b>	<b>1,737</b>

# Fiscal Year 2021 Concurrency Details

## Supervisions Where Release Recommended

Supervision Level	Number of Supervisions
<b>Administrative Supervision</b>	<b>482</b>
Administrative - DV	287
Administrative	115
Administrative - SA	41
Administrative - CCA	25
Administrative-EM/DV(CAITLYNS C)	9
Administrative - MH	5
<b>Awaiting Release</b>	<b>23</b>
IN CUSTODY	23
<b>Standard Supervision</b>	<b>20</b>
Moderate - DV	14
Moderate Supervision	6
<b>Intensive Supervision</b>	<b>12</b>
Intensive - EM/DV (CAITLYN'S C.)	4
Intensive - EM	3
Intensive - DV	2
Intensive - SA	2
Intensive	1
<b>Total</b>	<b>537</b>

## Supervisions Where Release Recommended by Supervision Track



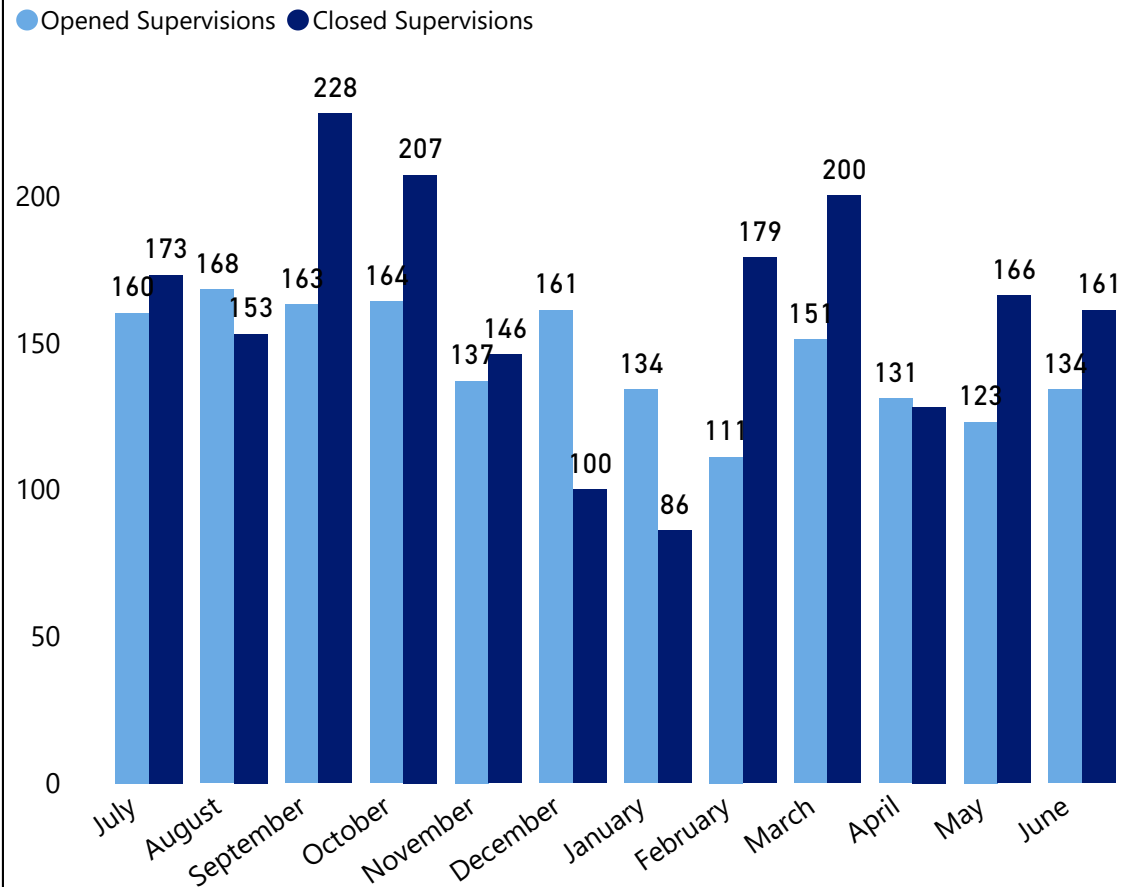
# Fiscal Year 2021 Referrals and Closures

**1,737** Supervisions Opened

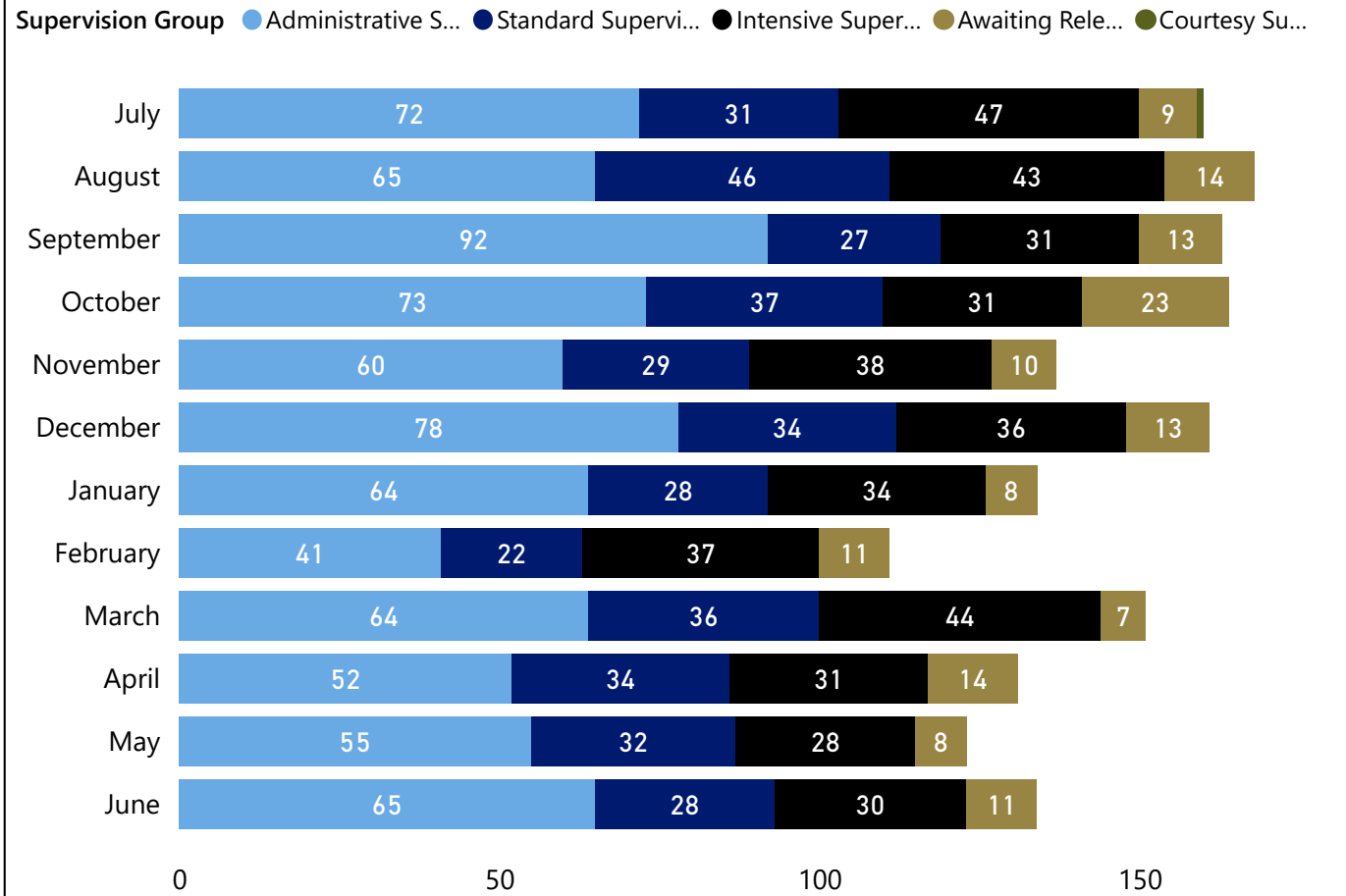
**1,926** Supervisions Closed

A person can be referred to pretrial supervision by a district or superior court judge. They can be assigned to supervision on more than one charge or might not be referred to supervision for all pending charges. For the purposes of this report, a supervision is counted as one supervision regardless of the number of charges they have been referred to supervision for. For example, if a person has six pending charges in Buncombe County, and they have been referred to Pretrial on four of those charges, that is counted as one supervision.

### Number of Supervisions Opened and Closed by Month



### Opened Supervisions by Month and Supervision Group

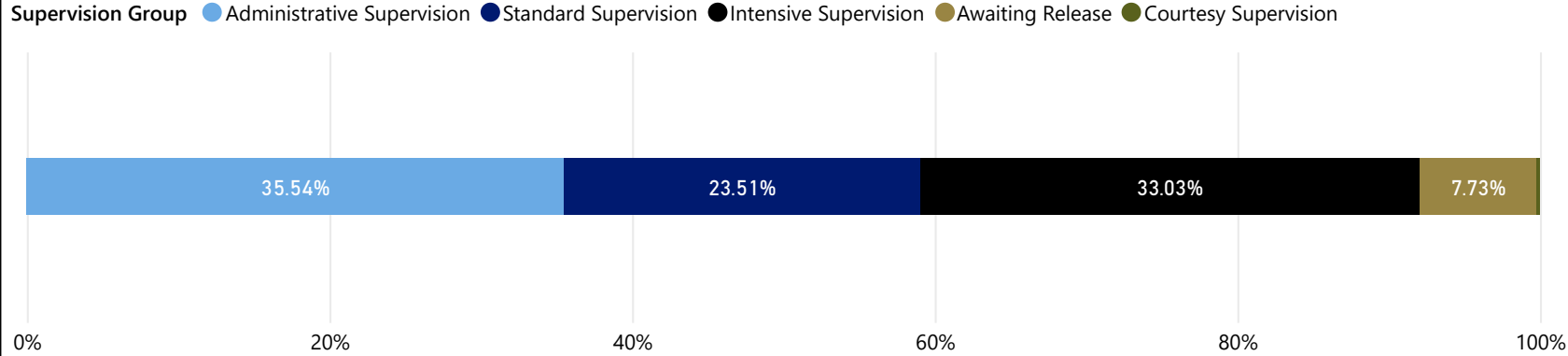


# Fiscal Year 2021 Supervisions

**1,027**  
Average Daily Caseload

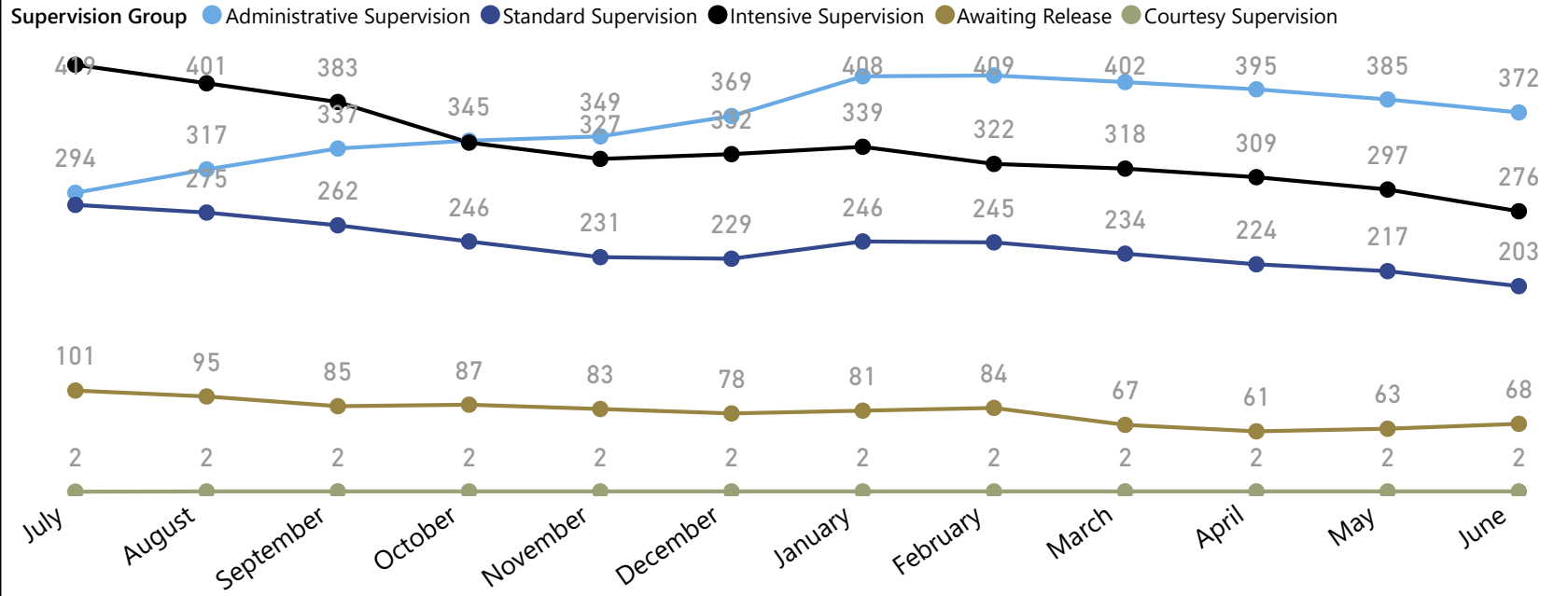
**2,829**  
Active During Period

## Average Daily Caseload by Supervision Group

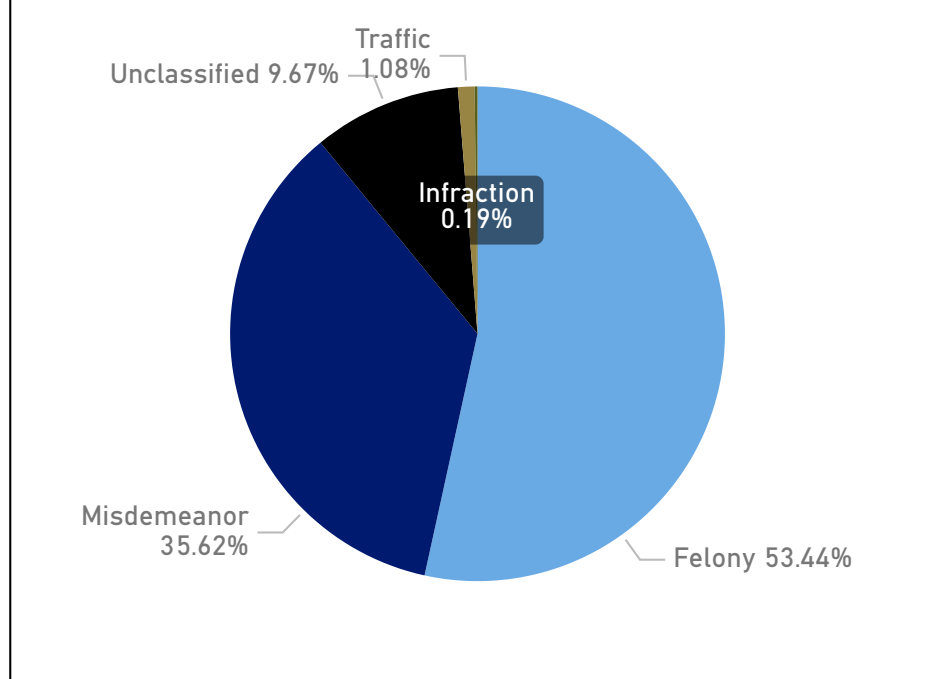


Fiscal Month	Average Daily Caseload	Active During Period
July	1,097	1,252
August	1,089	1,247
September	1,069	1,257
October	1,023	1,195
November	992	1,125
December	1,010	1,140
January	1,076	1,174
February	1,062	1,200
March	1,023	1,172
April	991	1,103
May	965	1,098
June	921	1,066

## Average Daily Caseload by Week

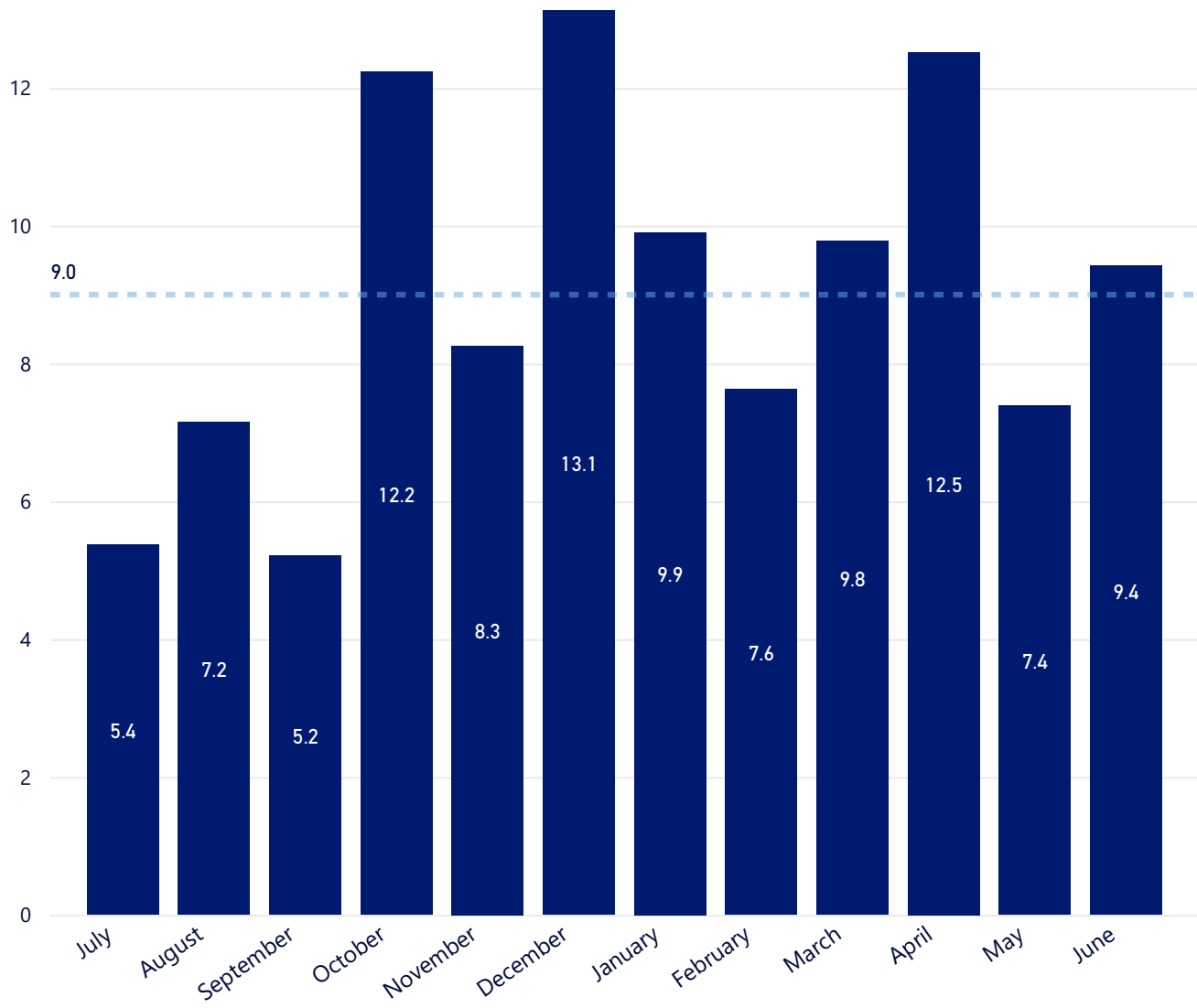


## Average Daily Caseload by Top Charge Type

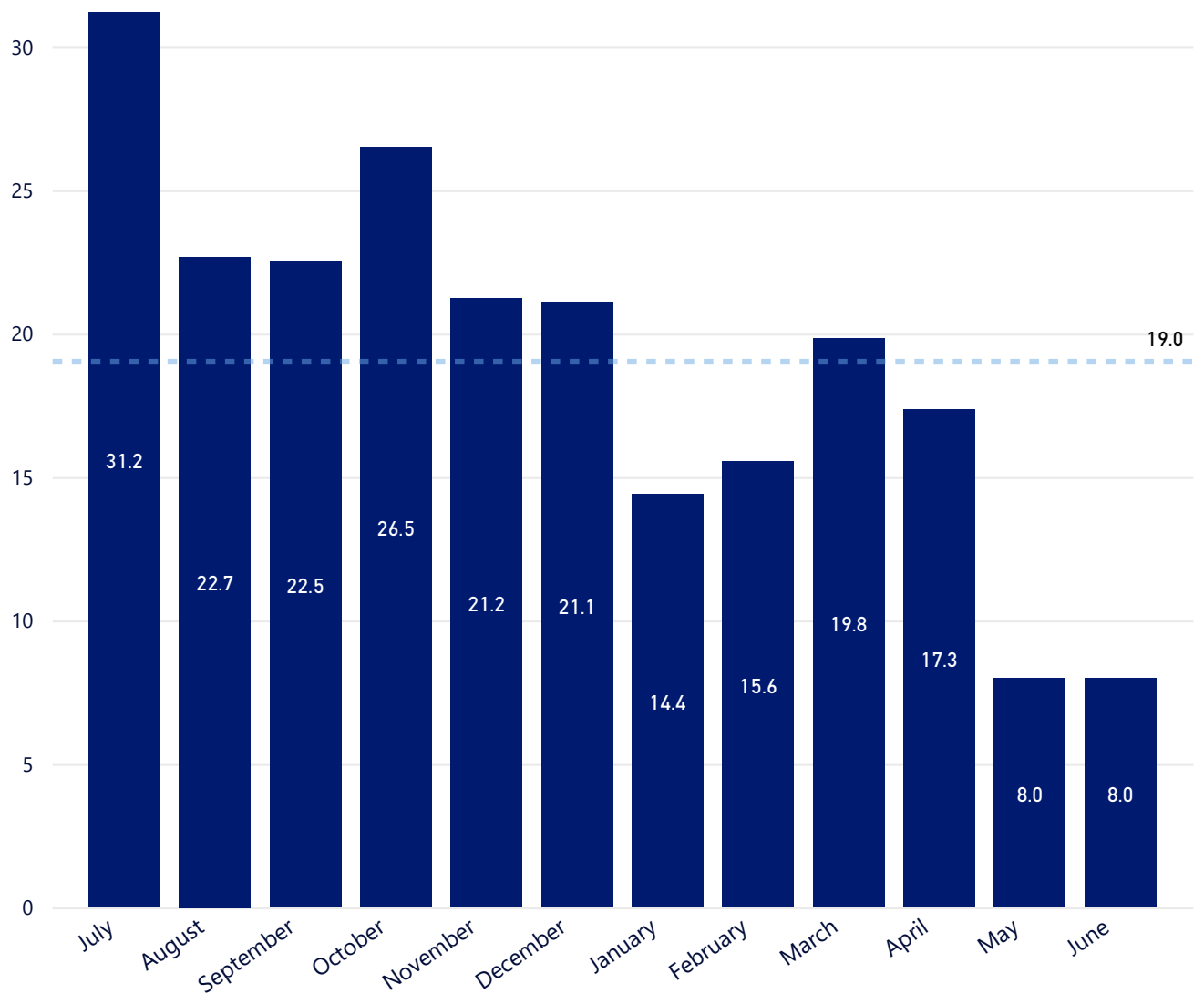


# Fiscal Year 2021 Supervisions Opened

## Average Days Between Booking and Assignment by Month



## Average Days Between Assignment and Release by Month





# Fiscal Year 2021 Technical Violations

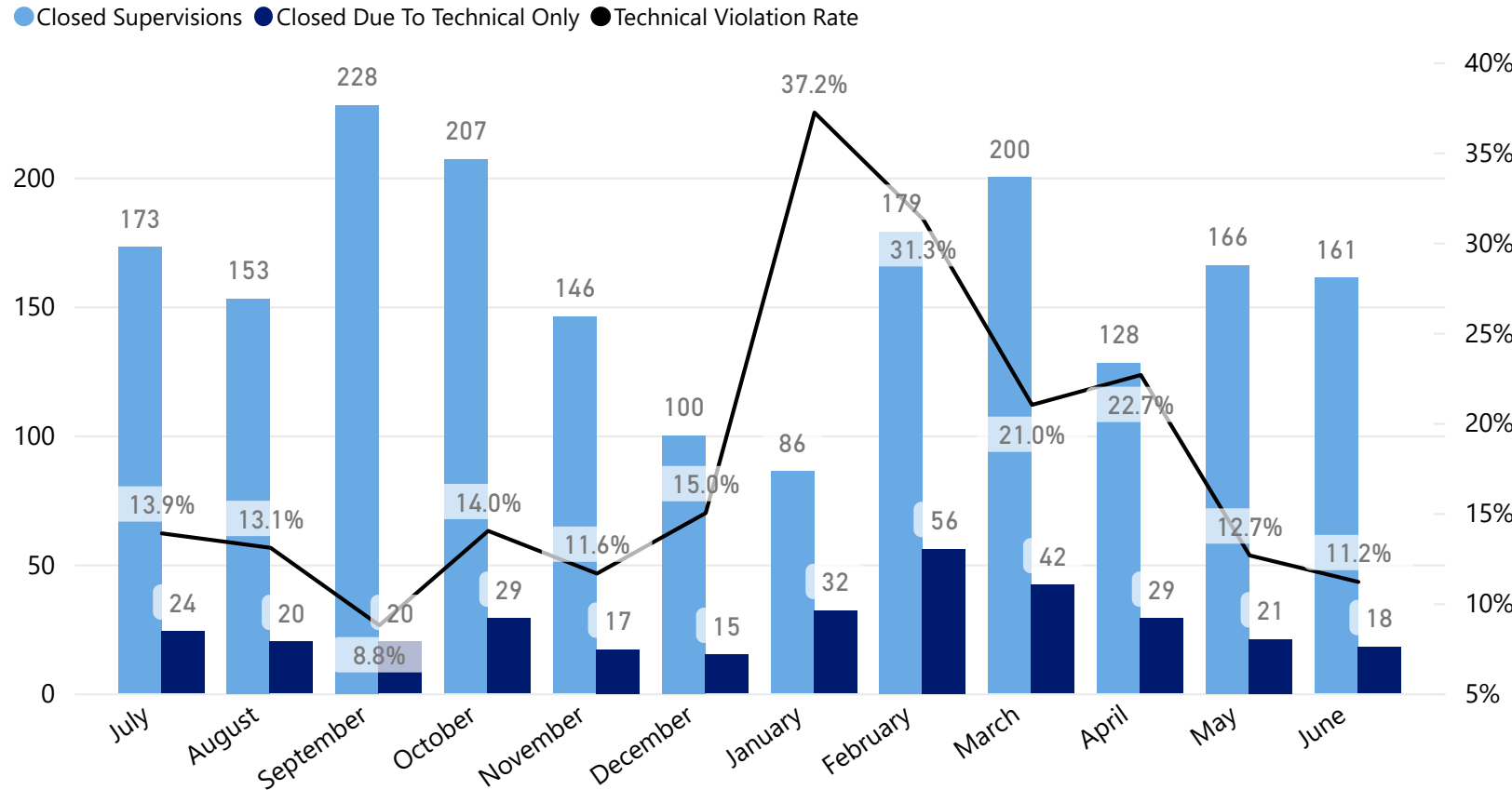
1,926  
Closed Supervisions

323  
Closed - Technical Only

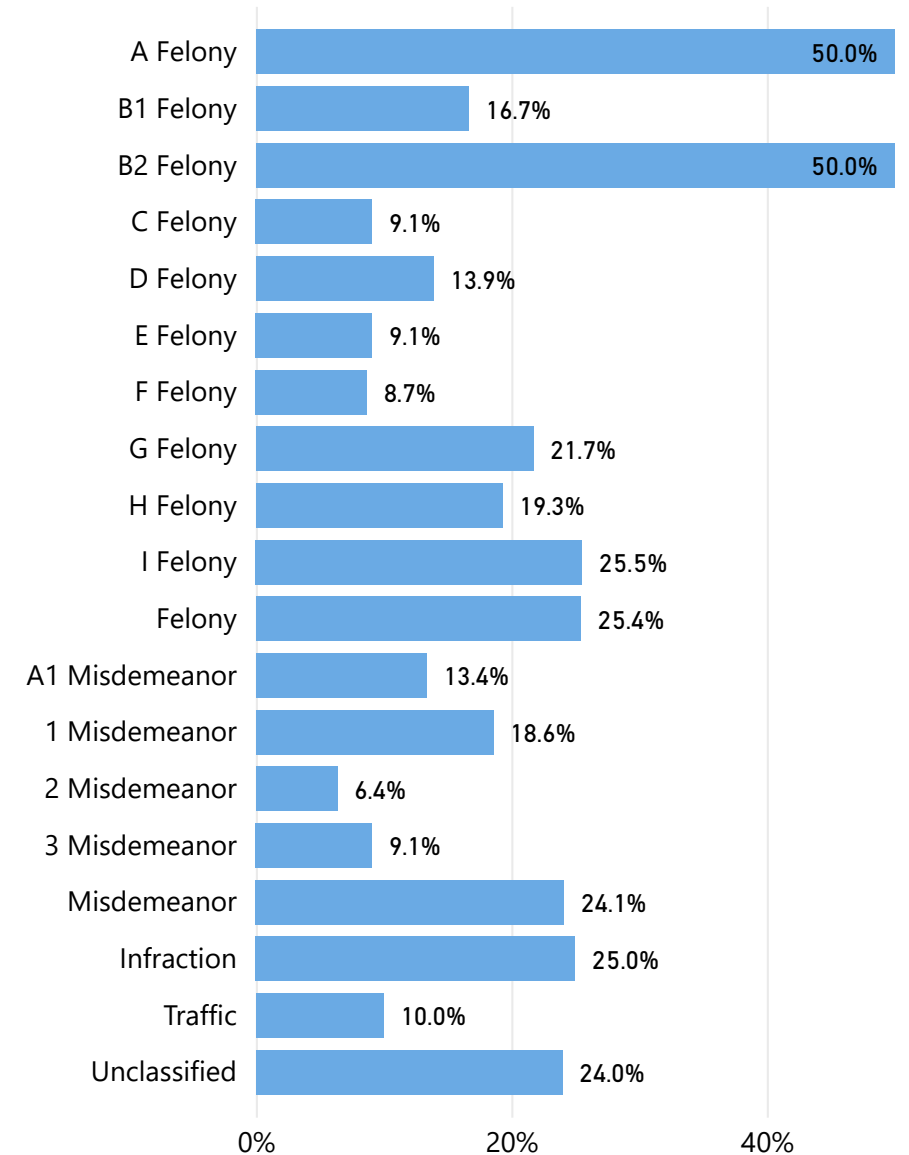
16.8%  
Tech. Violation Rate

When a supervision is closed, it is flagged as successful or unsuccessful. Unsuccessful supervisions are closed due to the following reasons: a new charge occurs, an individual fails to appear in court, an individual violates release conditions (technical violation), or some combination thereof. A closed supervision that is unsuccessful is counted as a technical violation if "technical violation" is the only disposition reason identified on the supervision.

## Technical Violations by Month



## Technical Violation Rate by Top Charge Offense Level



# Fiscal Year 2021 Public Safety Rate

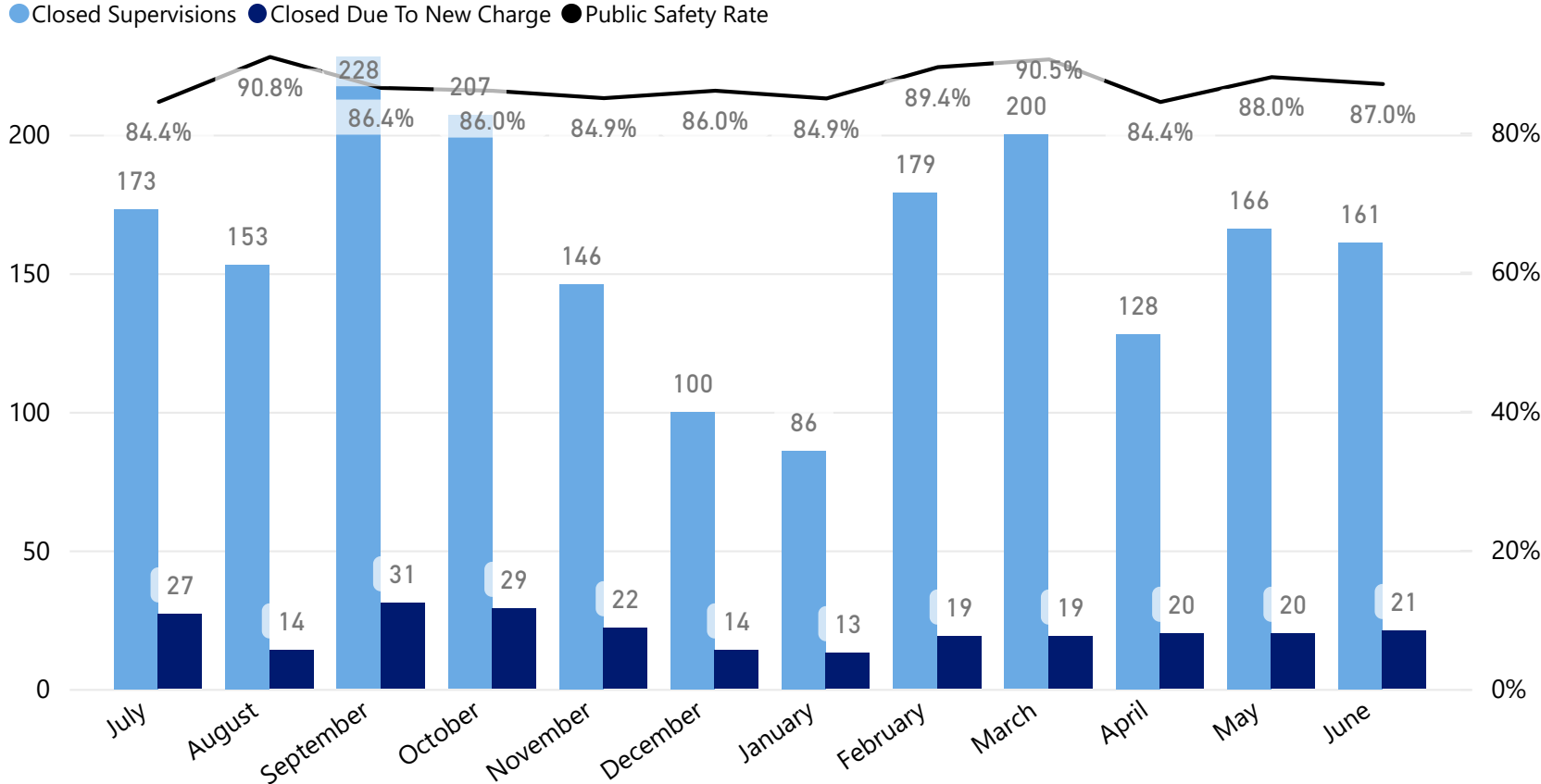
1,926  
Closed Supervisions

249  
Closed - New Charge

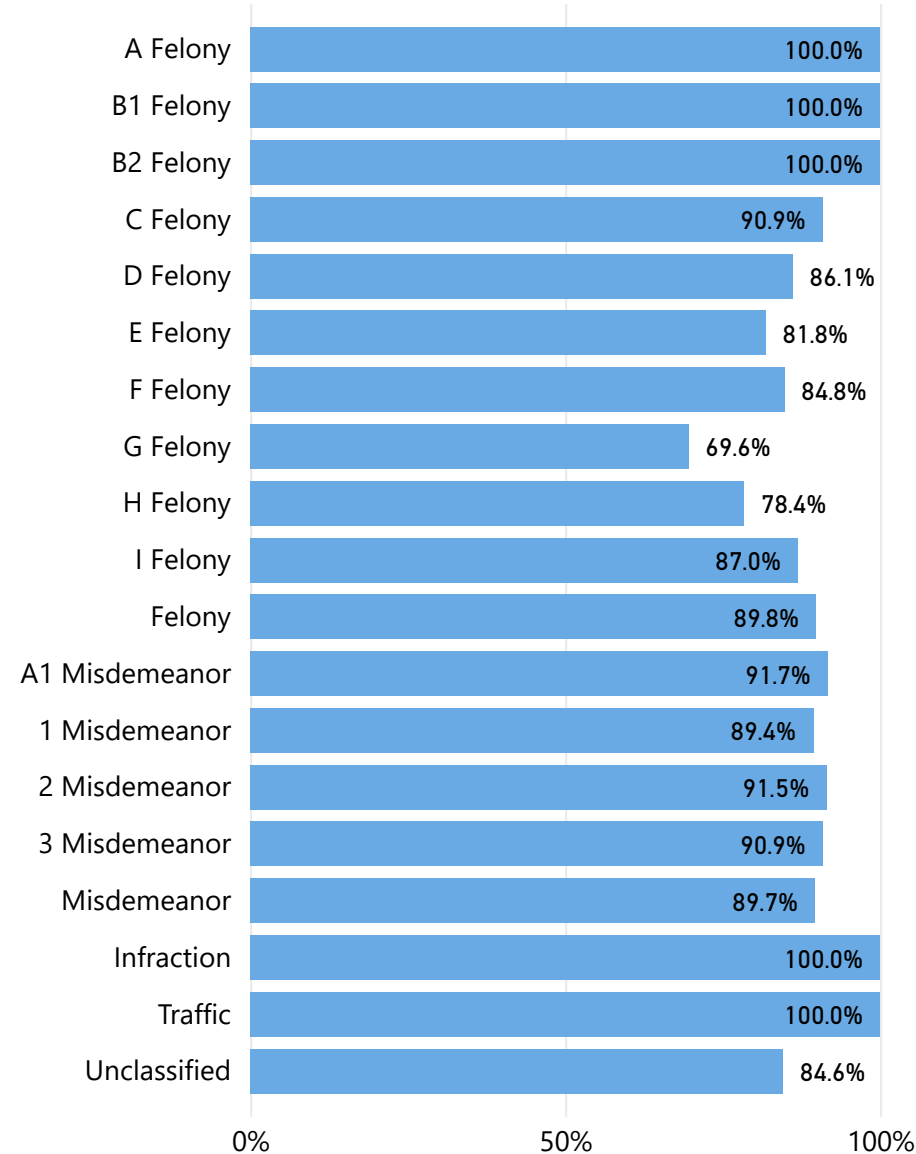
87.1%  
Public Safety Rate

When a supervision is closed, it is flagged as successful or unsuccessful. Unsuccessful supervisions are closed due to the following reasons: a new charge occurs, an individual fails to appear in court, an individual violates release conditions (technical violation), or some combination thereof. A closed supervision that is unsuccessful is closed due to new charge if "new charge" is one of the disposition reasons identified on the supervision.

## New Charges by Month



## Public Safety Rate by Top Charge Offense Level



# Fiscal Year 2021 Appearance Rate

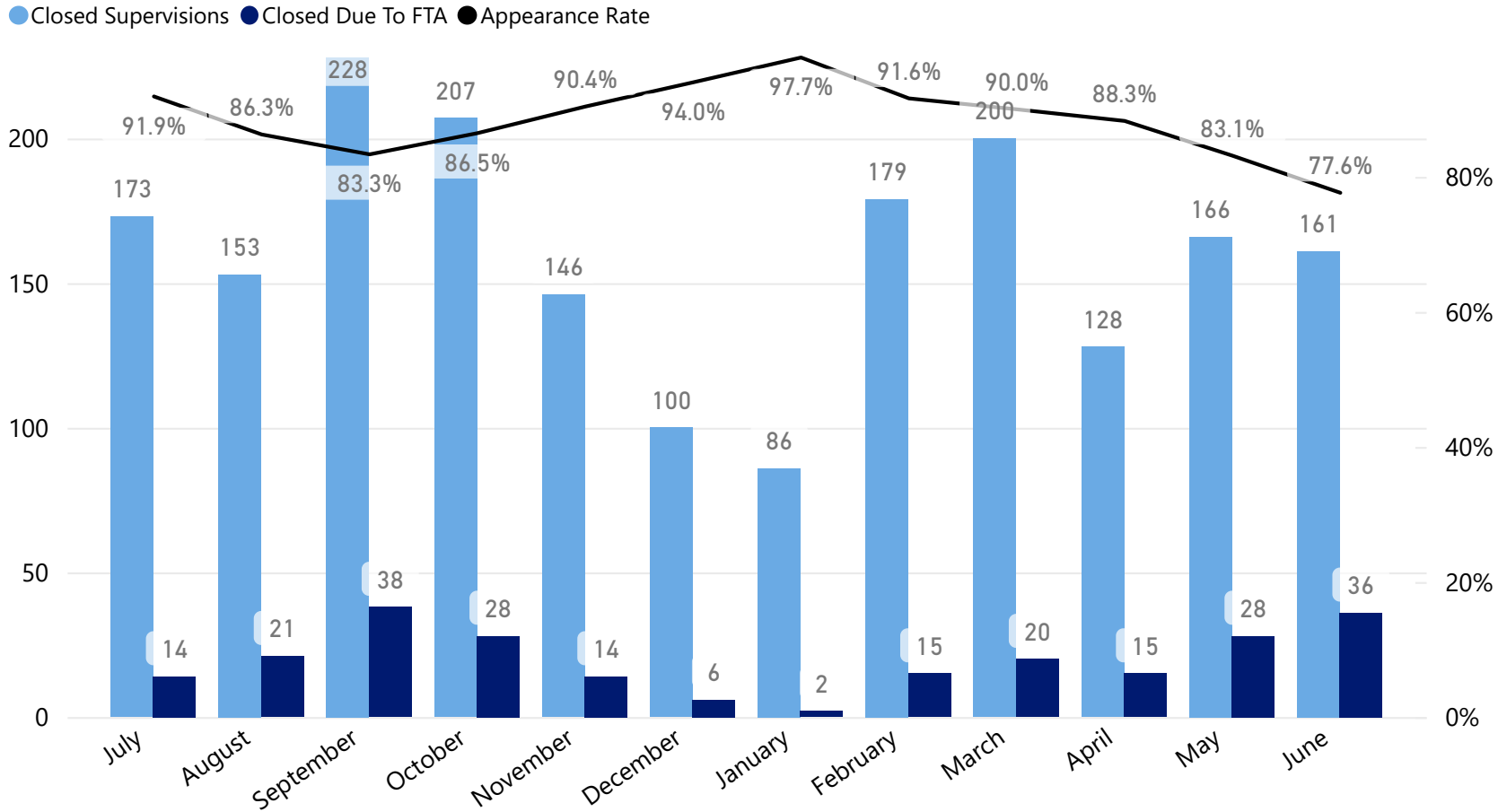
1,926  
Closed Supervisions

237  
Closed Due To FTA

87.7%  
Appearance Rate

When a supervision is closed, it is flagged as successful or unsuccessful. Unsuccessful supervisions are closed due to the following reasons: a new charge occurs, an individual fails to appear in court, an individual violates release conditions (technical violation), or some combination thereof. A closed supervision that is unsuccessful is closed due to FTA if "FTA" is one of the disposition reasons identified on the supervision.

## FTAs by Month



## Appearance Rate by Top Charge Offense Level

