



# PRETRIAL SERVICES MONTHLY REPORT

## Court Services

Public Safety Assessment Volume, Accuracy, Risk Factors, and Concurrency

## Community Supervision

Open and Closed Supervisions, Caseload Demographics, Technical Violation Rate,  
Public Safety Rate, and Appearance Rate

Report Period: **October, Fiscal Year 2022**



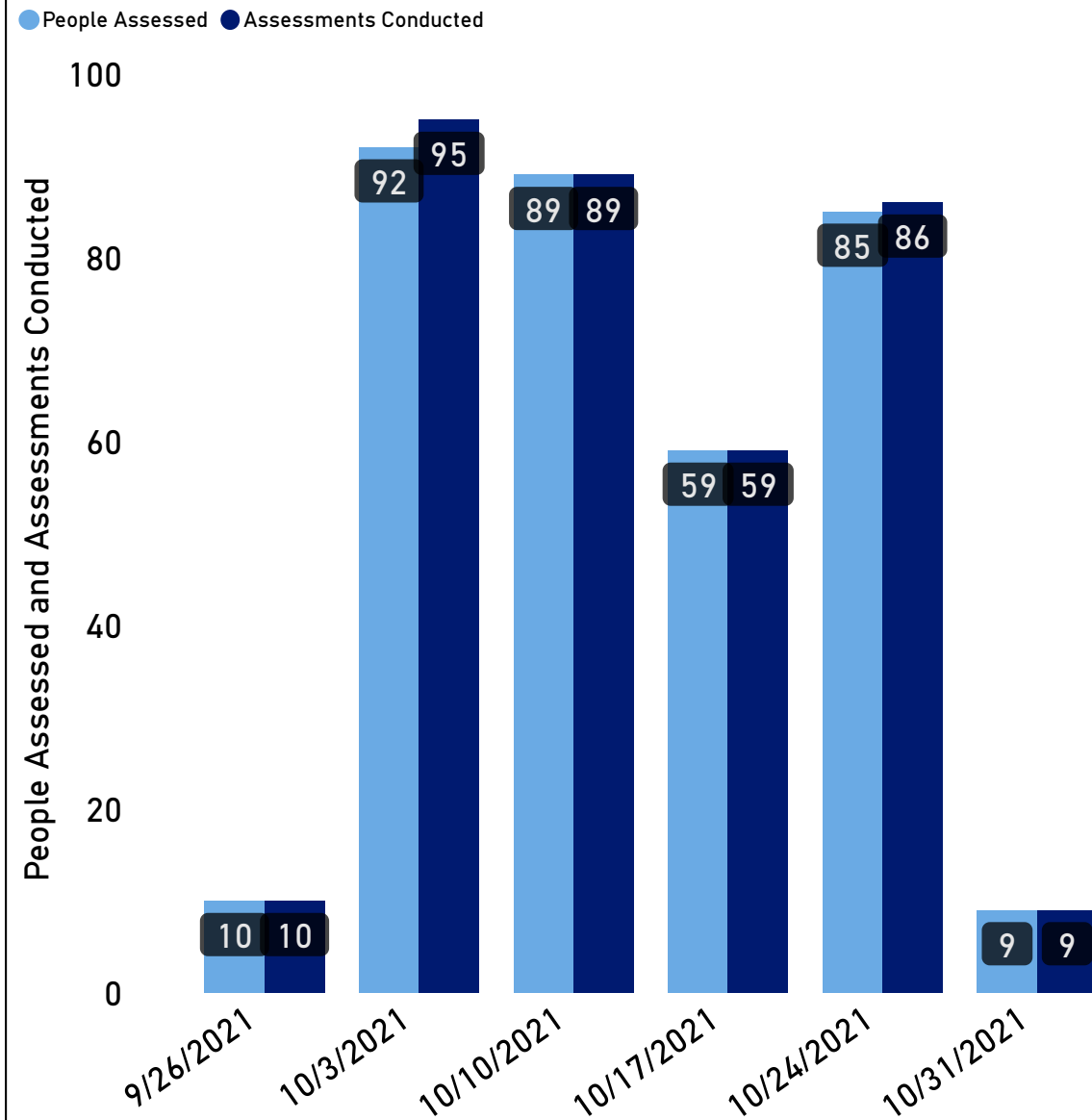
# October PSA Volume

**348** Assessments

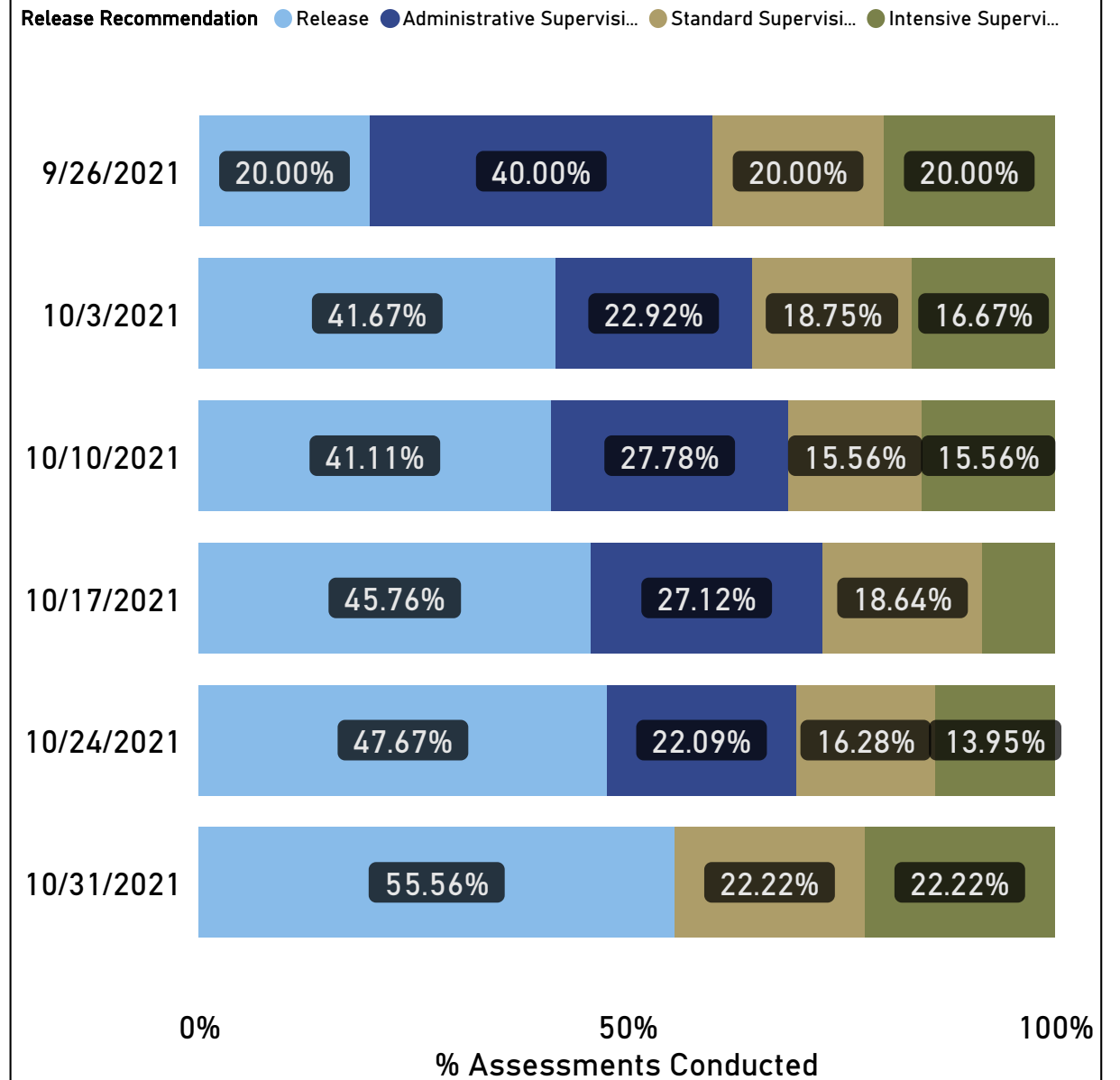
**333** People

**2** Overrides

Volume of PSAs & People Assessed by Week



PSA Recommendation by Week



## Fiscal Year 2022 Concurrency

619

Opened Supervision

63.5%

Concurrency Rate

226

Judicial Override

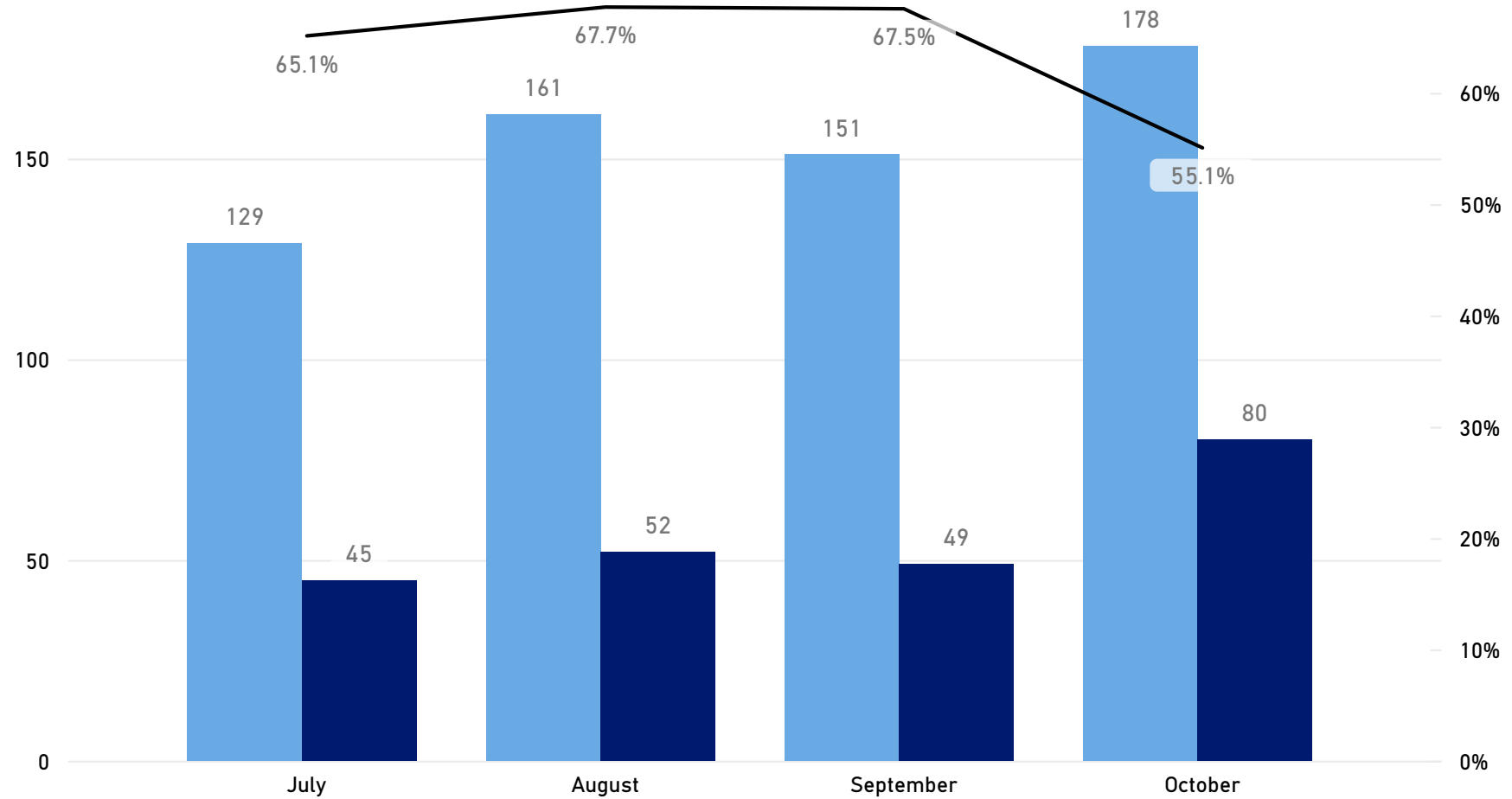
**111** supervisions opened have no release recommendation identified.

**36.0%** of supervisions were recommended for release.

### Release Recommended

Supervision Level	Number of Supervisions
Administrative Supervision	204
Standard Supervision	2
Intensive Supervision	5
In Custody	12
<b>Total</b>	<b>223</b>

● Opened Supervisions ● Number of Supervisions with Judicial Override ● Concurrency Rate



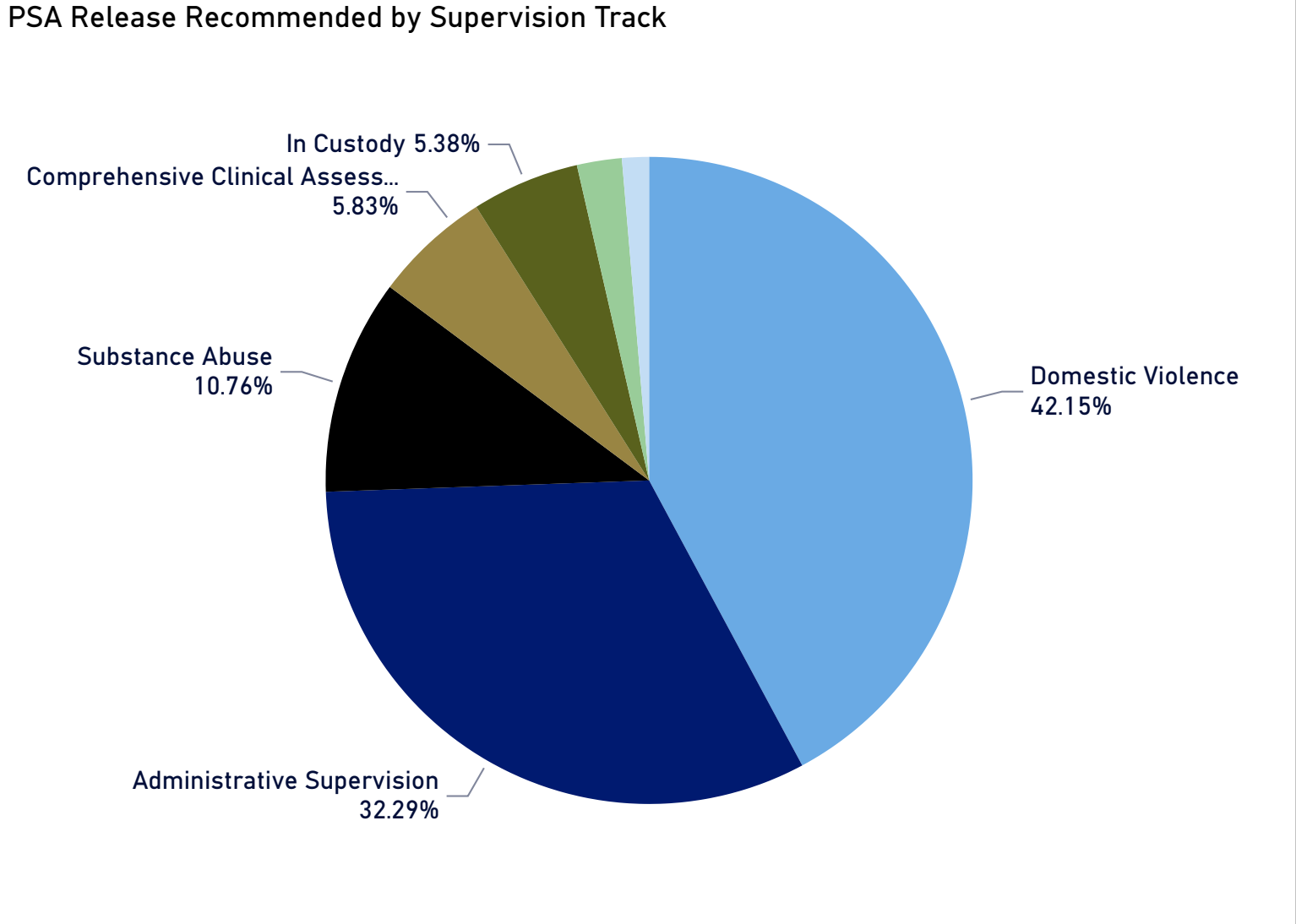
### Release Recommendation (top) by Release Decision (left column)

Release Decision	Release	Administrative Supervision	Standard Supervision	Intensive Supervision	Total
	59				<b>59</b>
Administrative Supervision	26	220	122	1	<b>368</b>
Standard Supervision	24	1	2	103	<b>130</b>
Intensive Supervision	8	2	1		<b>107</b>
<b>Total</b>	<b>111</b>	<b>223</b>	<b>125</b>	<b>104</b>	<b>619</b>

# Fiscal Year 2022 Concurrency Details

Of the **619** supervisions opened this fiscal year, **223** had a recommendation of release on the PSA. The Pretrial supervision track these supervisions were assigned to are presented here.

PSA Release Recommended	
Supervision Level	Number of Supervisions
<b>Administrative Supervision</b>	<b>204</b>
Administrative	72
Administrative - DV	69
Administrative - SA	24
Administrative-EM/DV(CAITLYNS C)	23
Administrative - CCA	13
Administrative - MH	3
<b>In Custody</b>	<b>12</b>
IN CUSTODY	12
<b>Intensive Supervision</b>	<b>5</b>
Intensive - EM	2
Intensive - EM (Wait / Posted)	2
Intensive - EM (Wait List)	1
<b>Standard Supervision</b>	<b>2</b>
Moderate - DV	2
<b>Total</b>	<b>223</b>

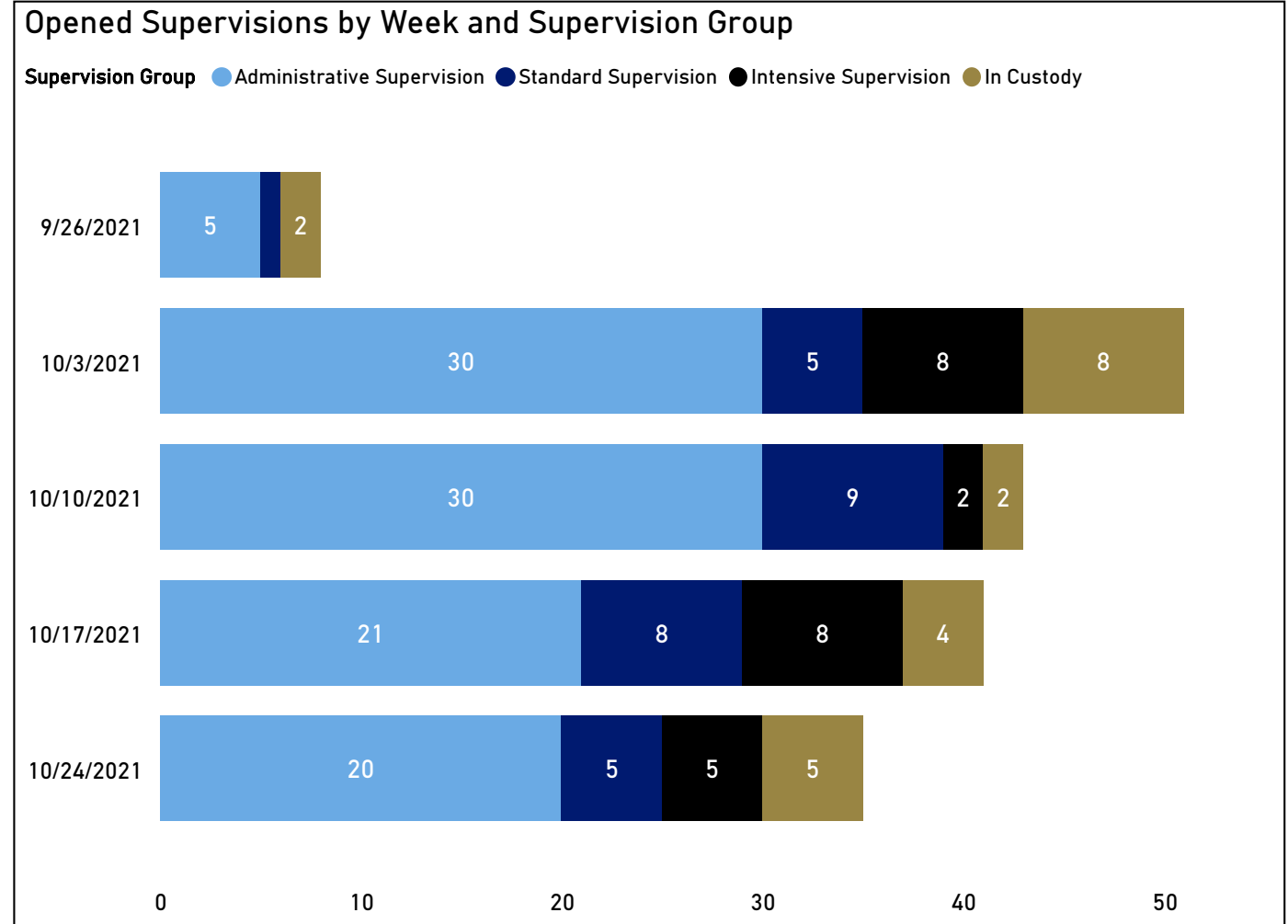
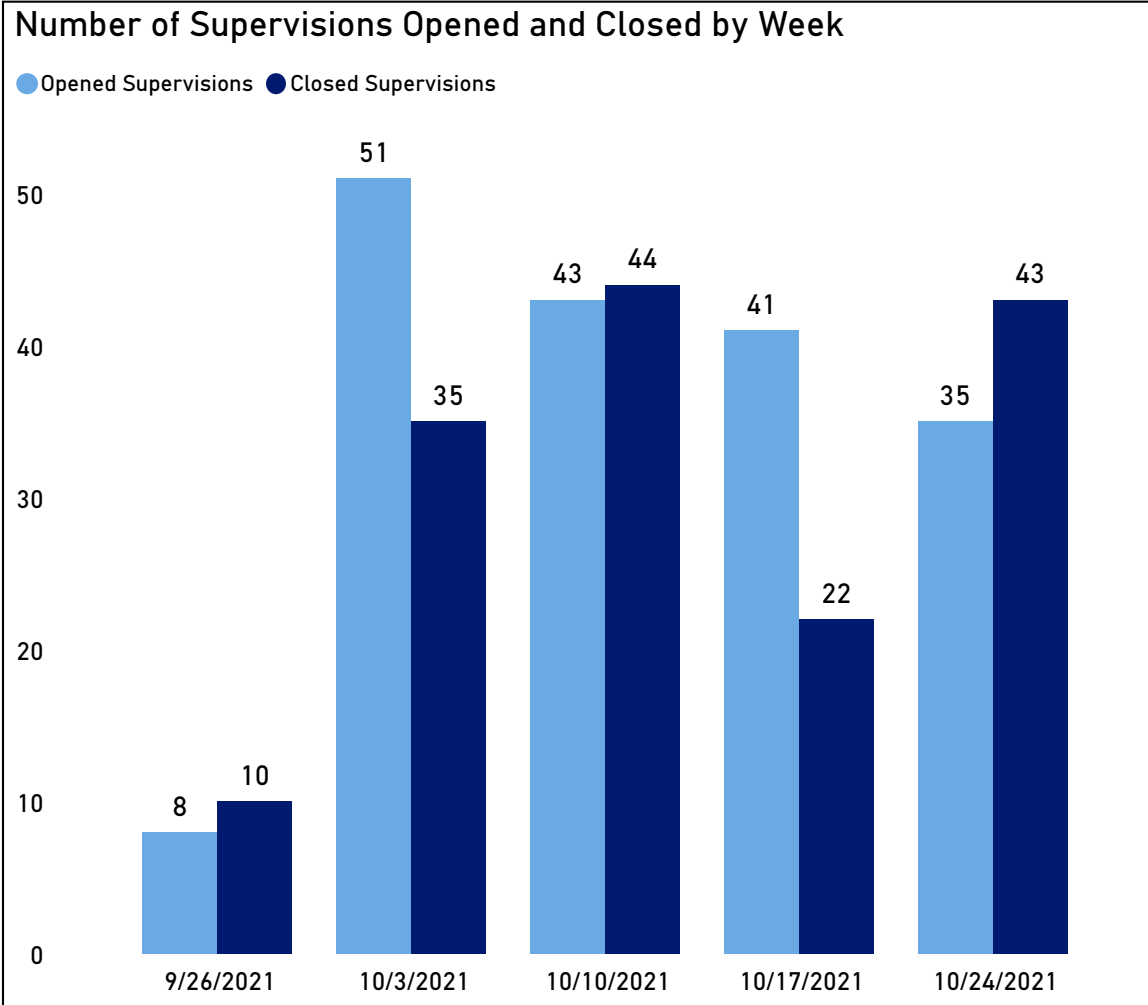


# October Assignments and Closures

**178** Supervisions Opened

**154** Supervisions Closed

A person can be referred to pretrial supervision by a district or superior court judge. They can be assigned to supervision on more than one charge or might not be referred to supervision for all pending charges. For the purposes of this report, a supervision is counted as one supervision regardless of the number of charges they have been referred to supervision for. For example, if a person has six pending charges in Buncombe County, and they have been referred to Pretrial on four of those charges, that is counted as one supervision.



# October Active Supervisions

802

Average Daily Caseload

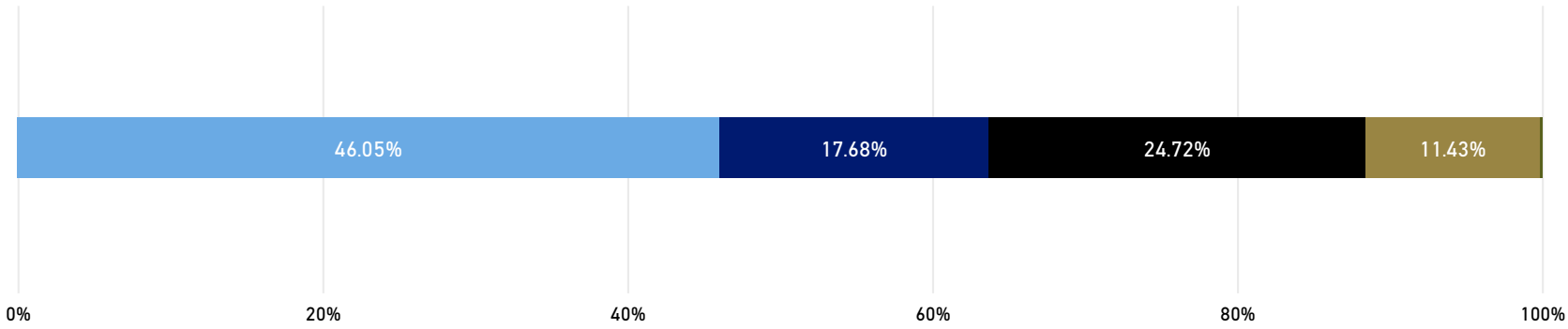
955

Active During Period

Fiscal Month	Average Daily Caseload	Active During Period
July	859	1,006
August	802	962
September	790	950
October	802	955
<b>Total</b>	<b>814</b>	<b>1,542</b>

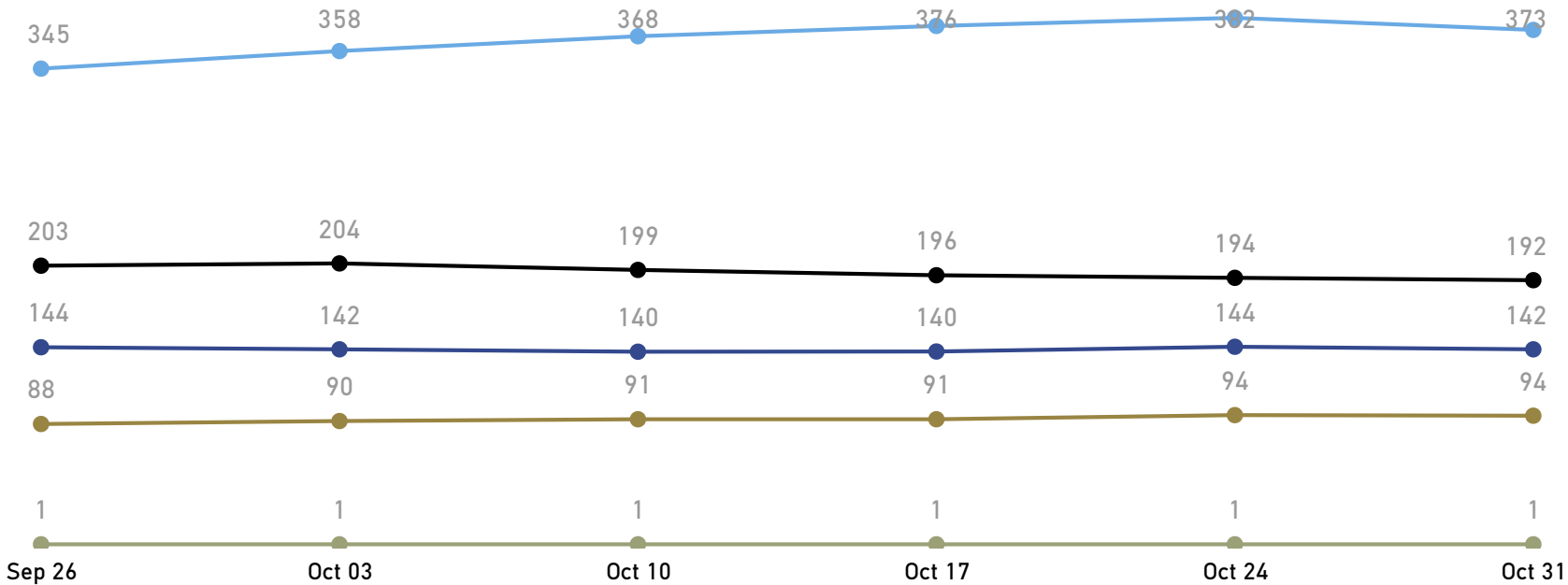
## Average Daily Caseload by Supervision Group

Supervision Group Administrative Supervision Standard Supervision Intensive Supervision In Custody Courtesy Supervision

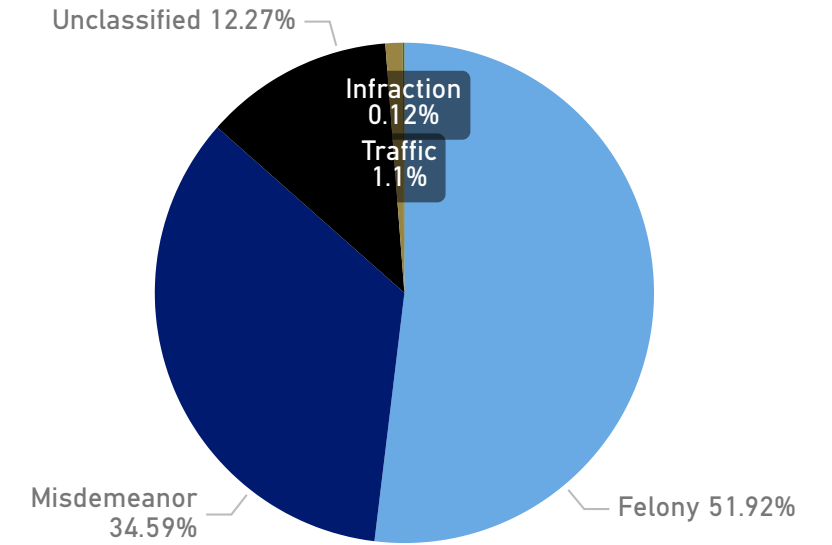


## Average Daily Caseload by Week

Supervision Group Administrative Supervision Standard Supervision Intensive Supervision In Custody Courtesy Supervision



## Average Daily Caseload by Top Charge Type

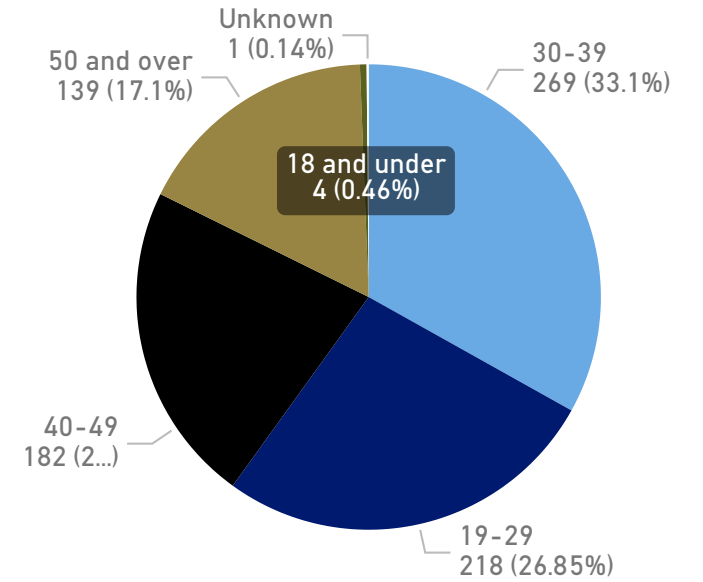


# Fiscal Year 2022 Caseload Demographics

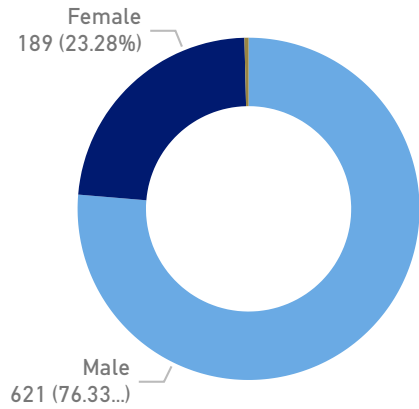
814

Average Daily Caseload

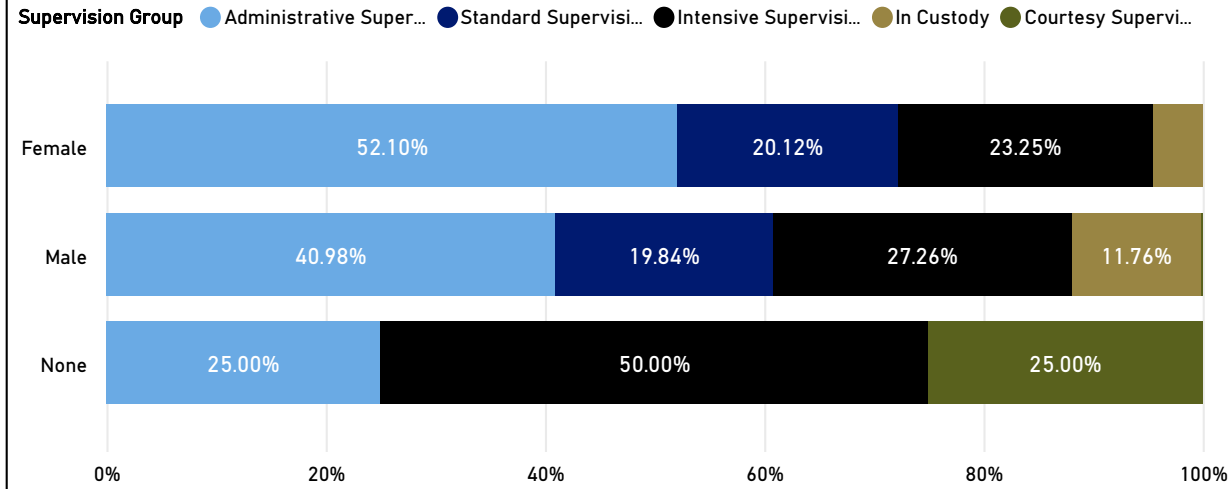
## By Age Group



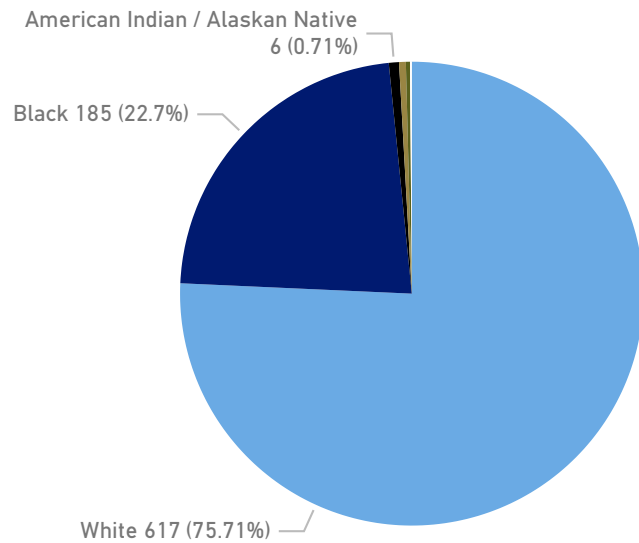
## By Gender



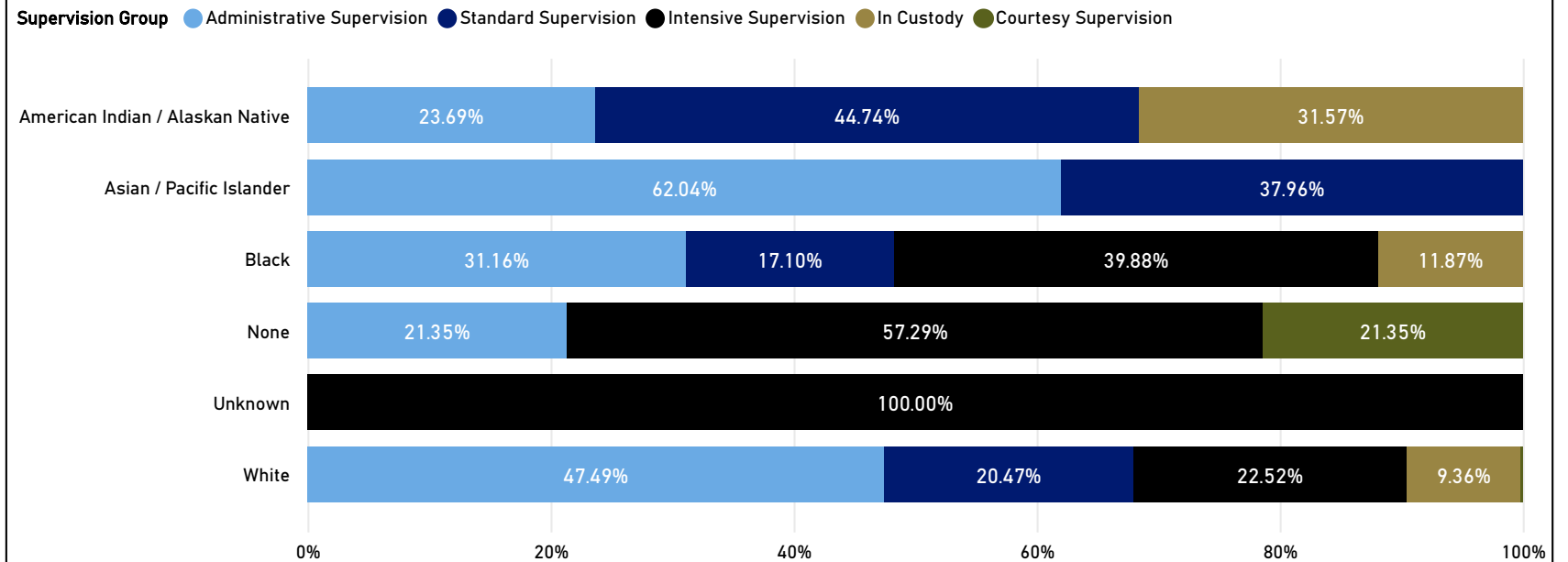
## By Gender and Supervision Group



## By Race



## By Race and Supervision Group



# Fiscal Year 2022 Technical Violations

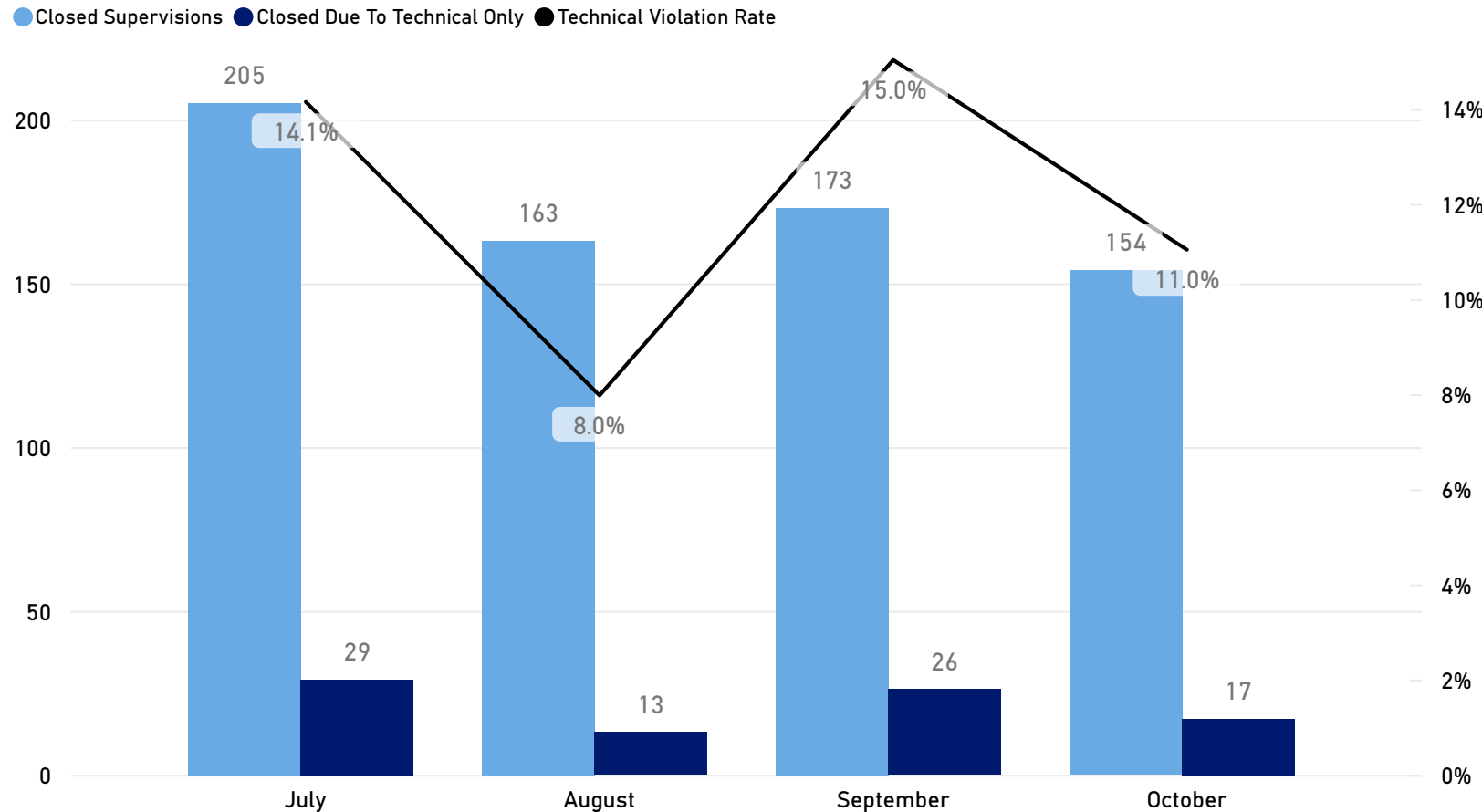
695  
Closed Supervisions

85  
Closed - Technical Only

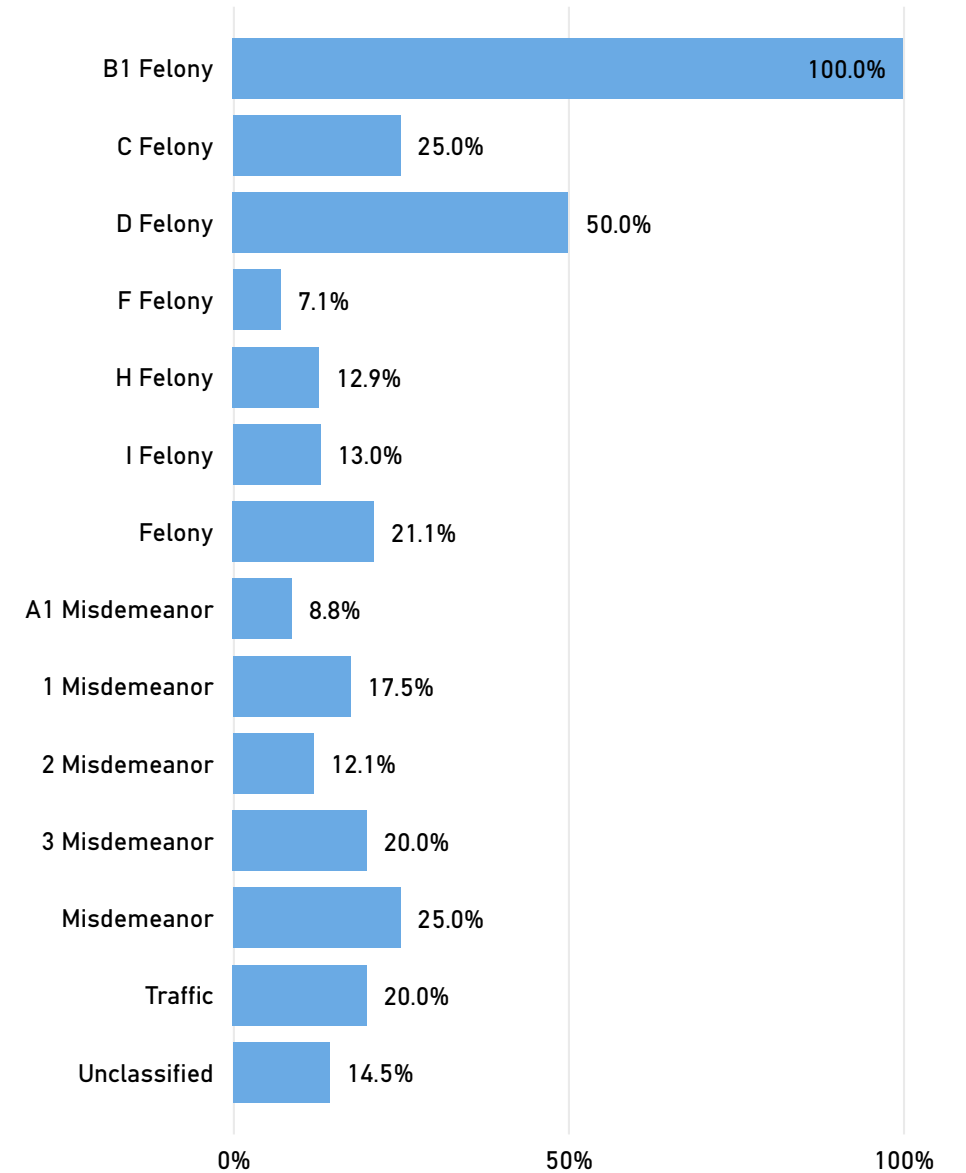
Technical Violation Rate  
**12.2%** ✓  
Goal: 14.8%

When a supervision is closed, it is flagged as successful or unsuccessful. Unsuccessful supervisions are closed due to the following reasons: a new charge occurs, an individual fails to appear in court, an individual violates release conditions (technical violation), or some combination thereof. A closed supervision that is unsuccessful is counted as a technical violation if "technical violation" is the only disposition reason identified on the supervision.

## Technical Violations by Month



## Technical Violation Rate by Top Charge Offense Level





# Fiscal Year 2022 Public Safety Rate

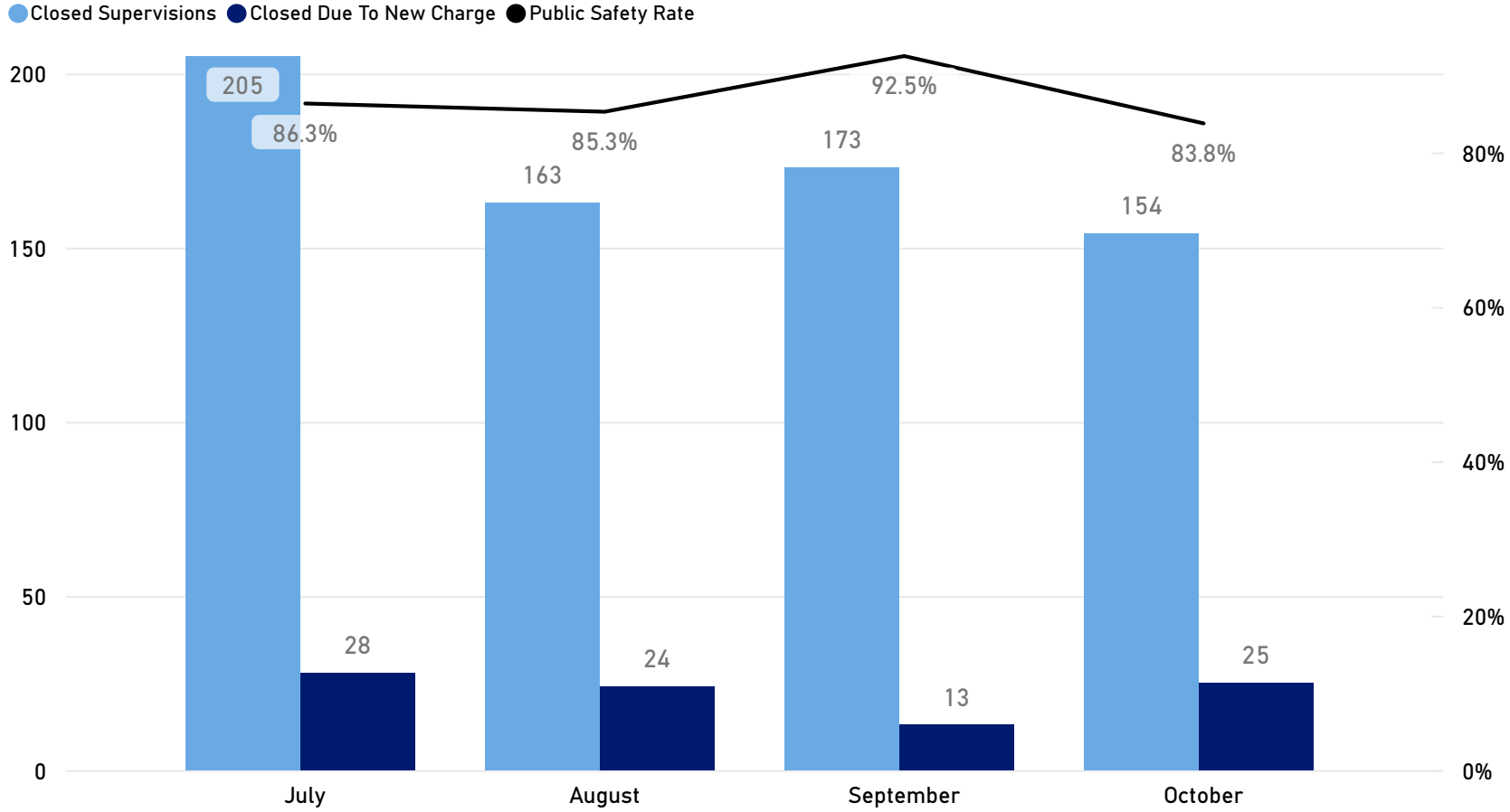
**695**  
Closed Supervisions

**90**  
Closed - New Charge

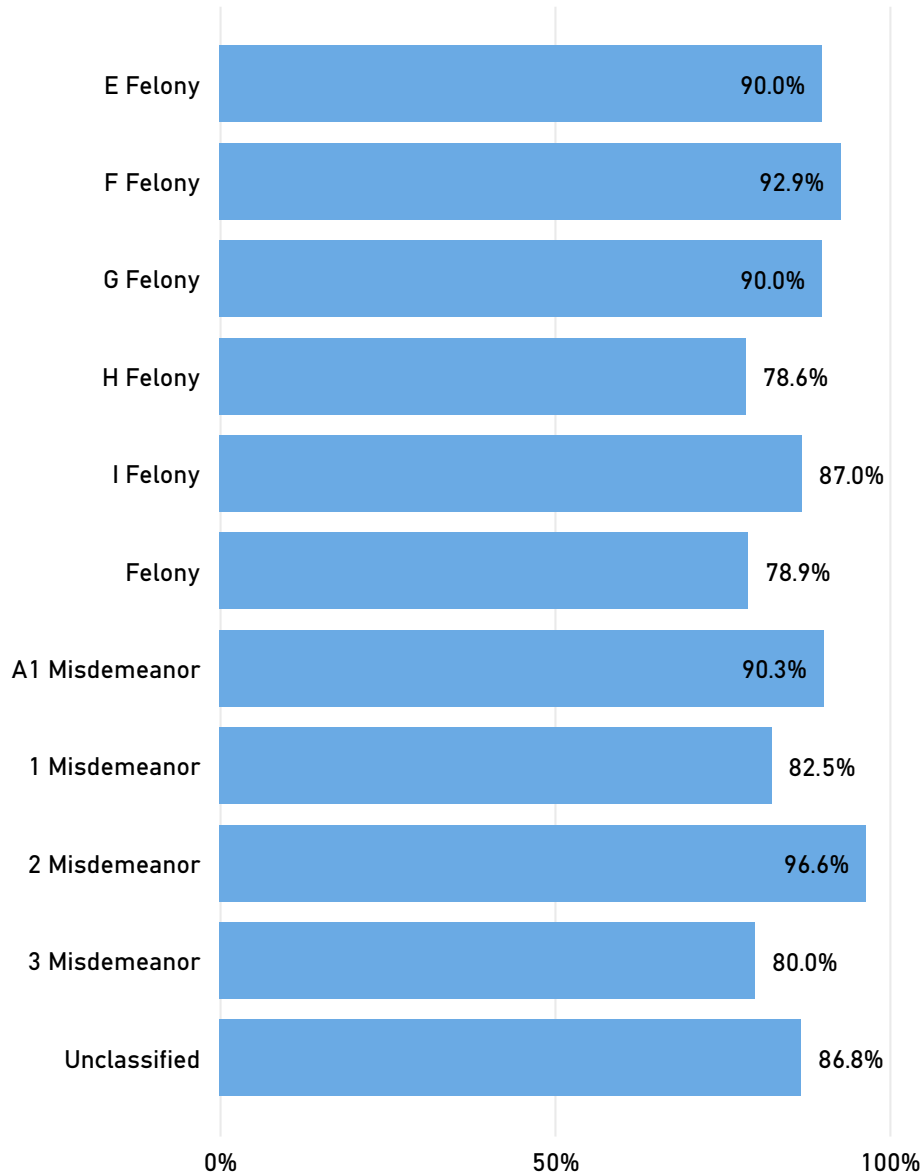
Public Safety Rate  
**87.1%!**  
Goal: 90.0%

When a supervision is closed, it is flagged as successful or unsuccessful. Unsuccessful supervisions are closed due to the following reasons: a new charge occurs, an individual fails to appear in court, an individual violates release conditions (technical violation), or some combination thereof. A closed supervision that is unsuccessful is closed due to new charge if "new charge" is one of the disposition reasons identified on the supervision.

## New Charges by Month



## Public Safety Rate by Top Charge Offense Level



# Fiscal Year 2022 Appearance Rate

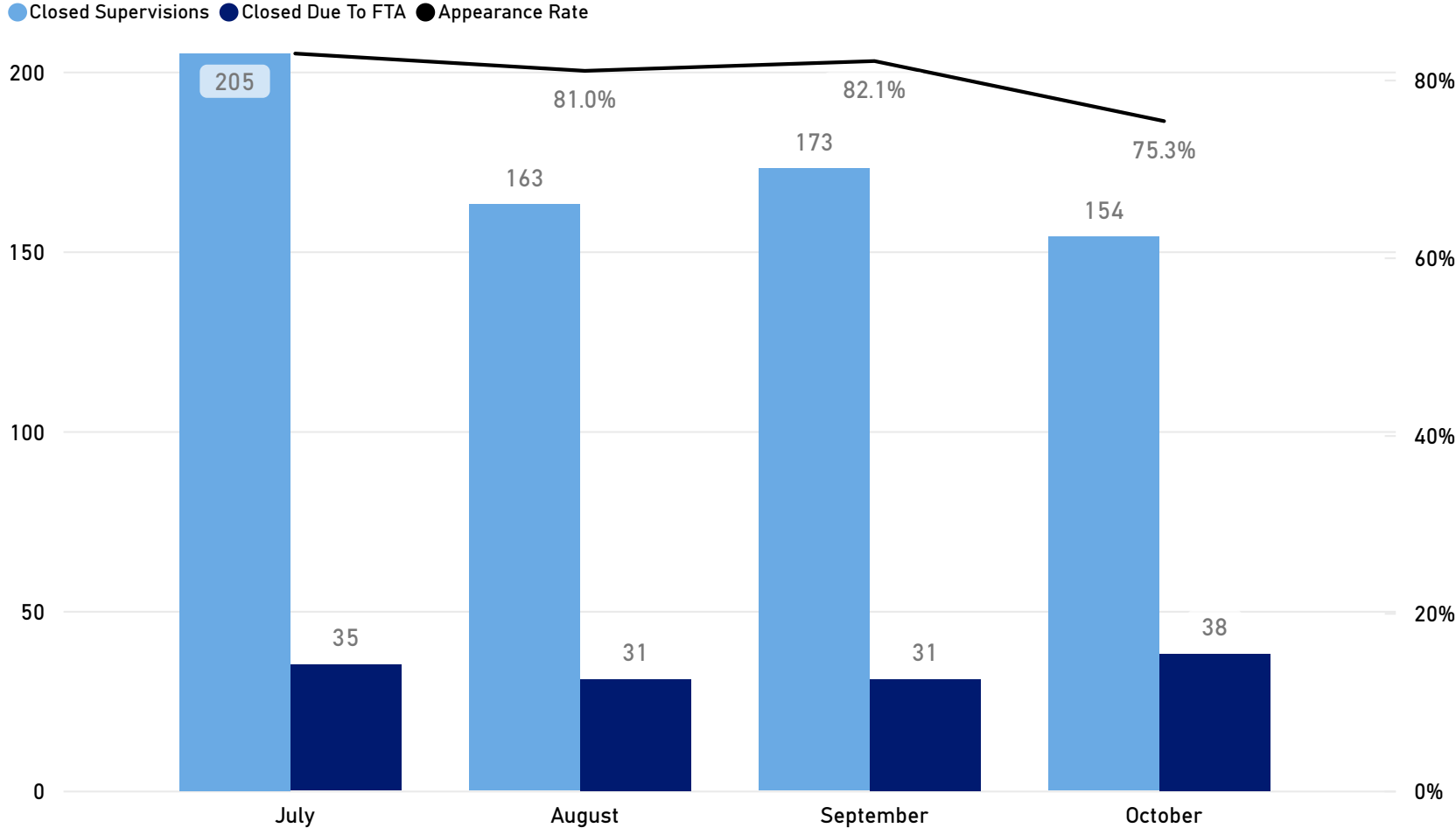
**695**  
Closed Supervisions

**135**  
Closed Due To FTA

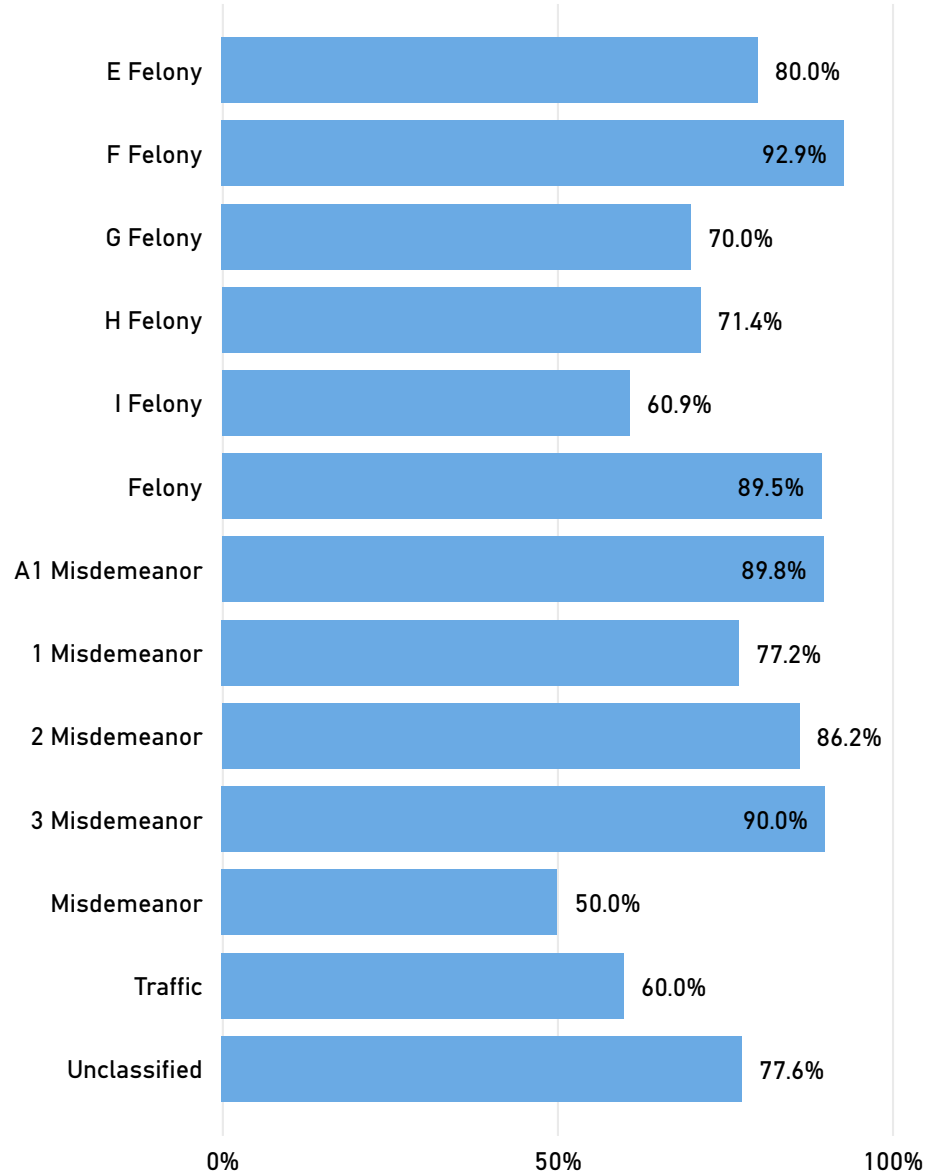
Appearance Rate  
**80.6%!**  
Goal: 90.0%

When a supervision is closed, it is flagged as successful or unsuccessful. Unsuccessful supervisions are closed due to the following reasons: a new charge occurs, an individual fails to appear in court, an individual violates release conditions (technical violation), or some combination thereof. A closed supervision that is unsuccessful is closed due to FTA if "FTA" is one of the disposition reasons identified on the supervision.

## FTAs by Month



## Appearance Rate by Top Charge Offense Level



Fiscal Year 2022

695  
Closed Supervisions

398  
Compliant  
297  
Non-Compliant

57.3%  
Compliant  
42.7%  
Non-Compliant

Supervision Compliance by Race

**American Indian / Alaskan Native**  
2  
Closed Compliant  
40.0%  
Compliance Rate

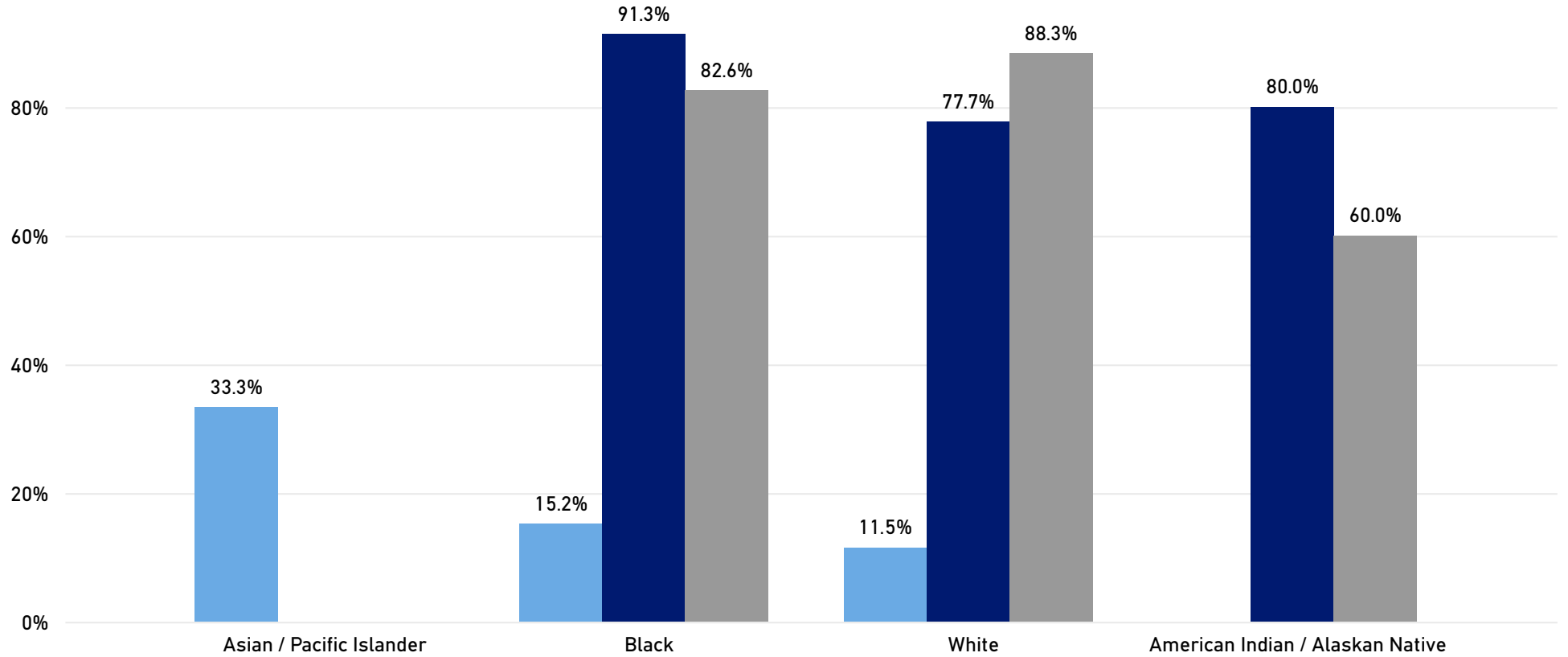
**Asian / Pacific Islander**  
2  
Closed Compliant  
66.7%  
Compliance Rate

**Black**  
85  
Closed Compliant  
61.6%  
Compliance Rate

**Unknown**  
1  
Closed Compliant  
100.0%  
Compliance Rate

**White**  
308  
Closed Compliant  
56.2%  
Compliance Rate

● Technical Violation Rate ● Appearance Rate ● Public Safety Rate



# Supervisions Opened in Fiscal Year 2022

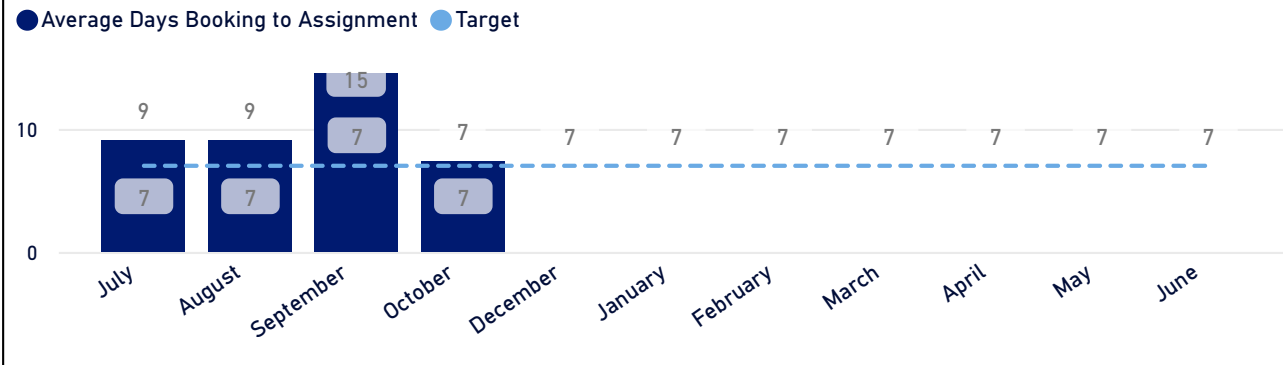
18,088

Total Estimated Bed Days Saved

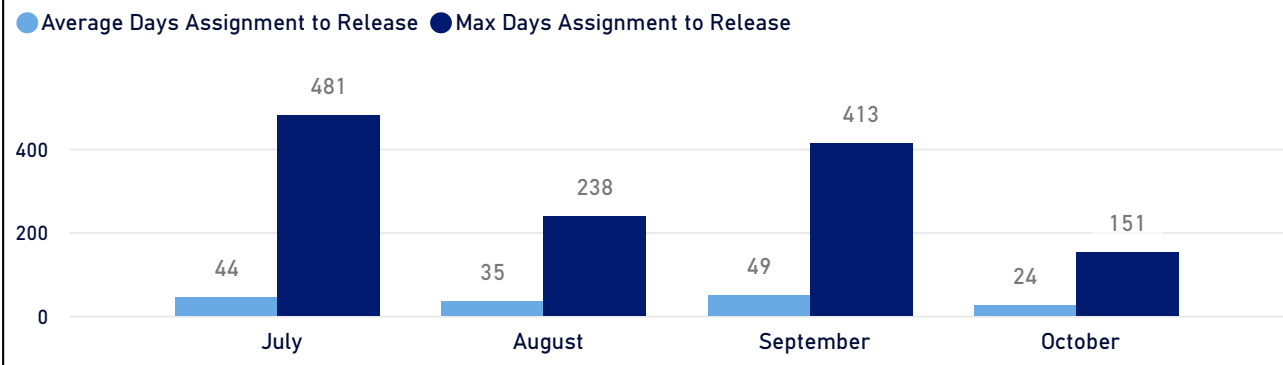
147

Estimated Beds Saved per Day

## Average Days Between Booking and Assignment by Month Assigned



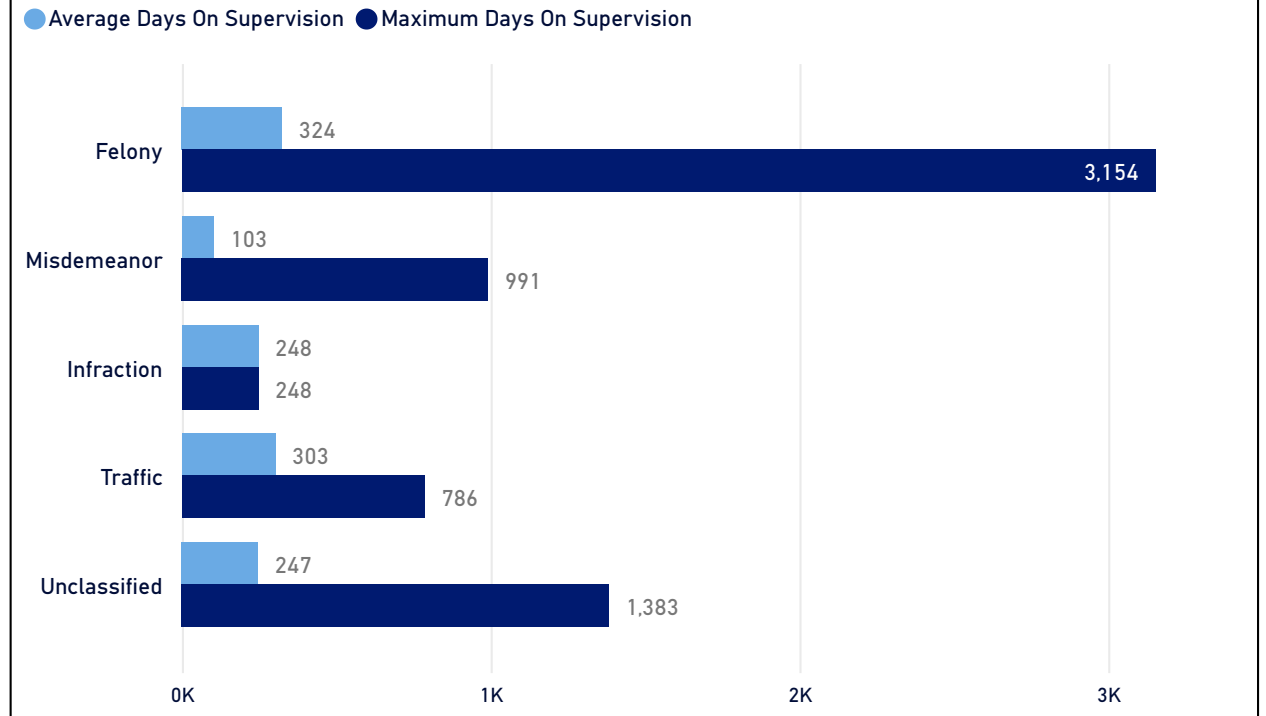
## Average Days Between Assignment and Release by Month Released



Effective September, FY2022 Report (September 2021), average days between assignment and release is calculated and presented based on the date a person was released from custody. This is a shift in methodology from earlier reports. The above graph includes supervisions released during the current fiscal year.

# 811 Supervisions Currently Open

## Days On Supervision by Top Charge Type - In Community



## Days On Supervision - In Custody

