



PRETRIAL SERVICES MONTHLY REPORT

Open and Closed Supervisions, Active Cases in Period,
PSA Volume, PSA Accuracy, PSA Risk Factors, PSA Concurrency, Technical Violations,
Public Safety Rate, and Appearance Rate

Report Period: **June, Fiscal Year 2021**



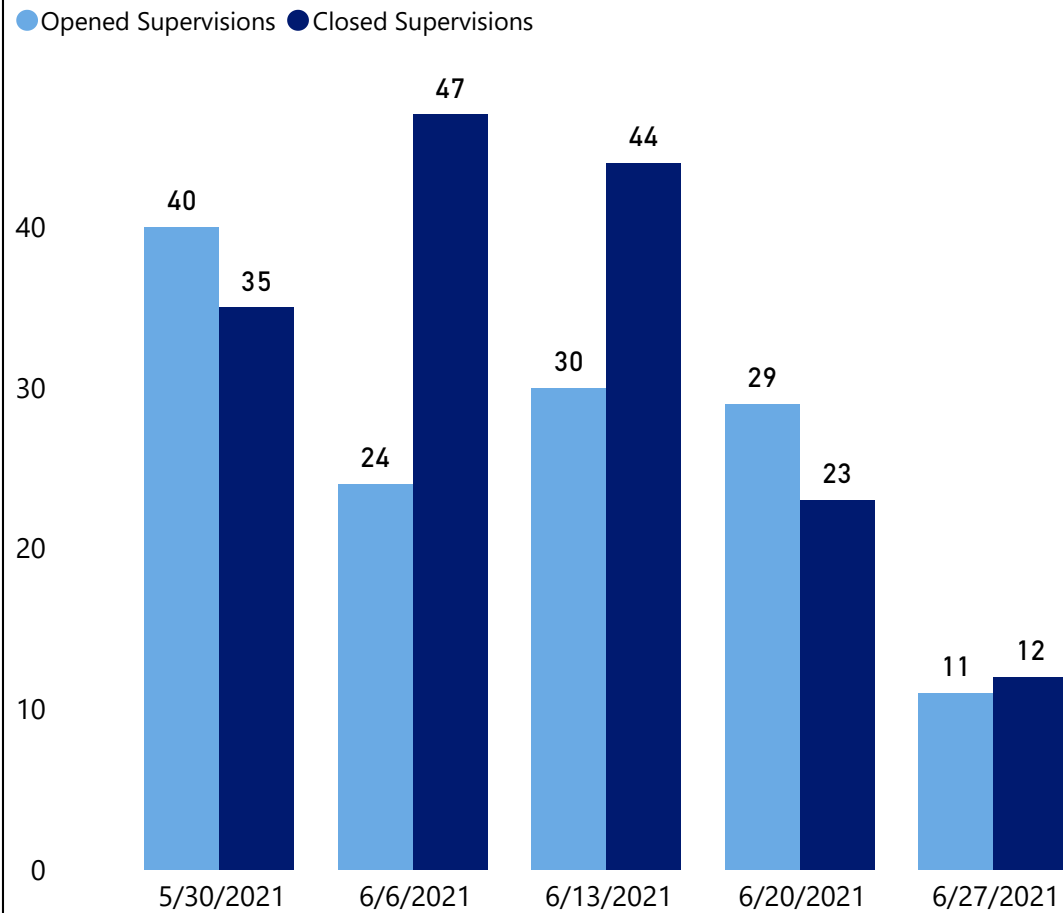
June Referrals and Closures

134 Supervisions Opened

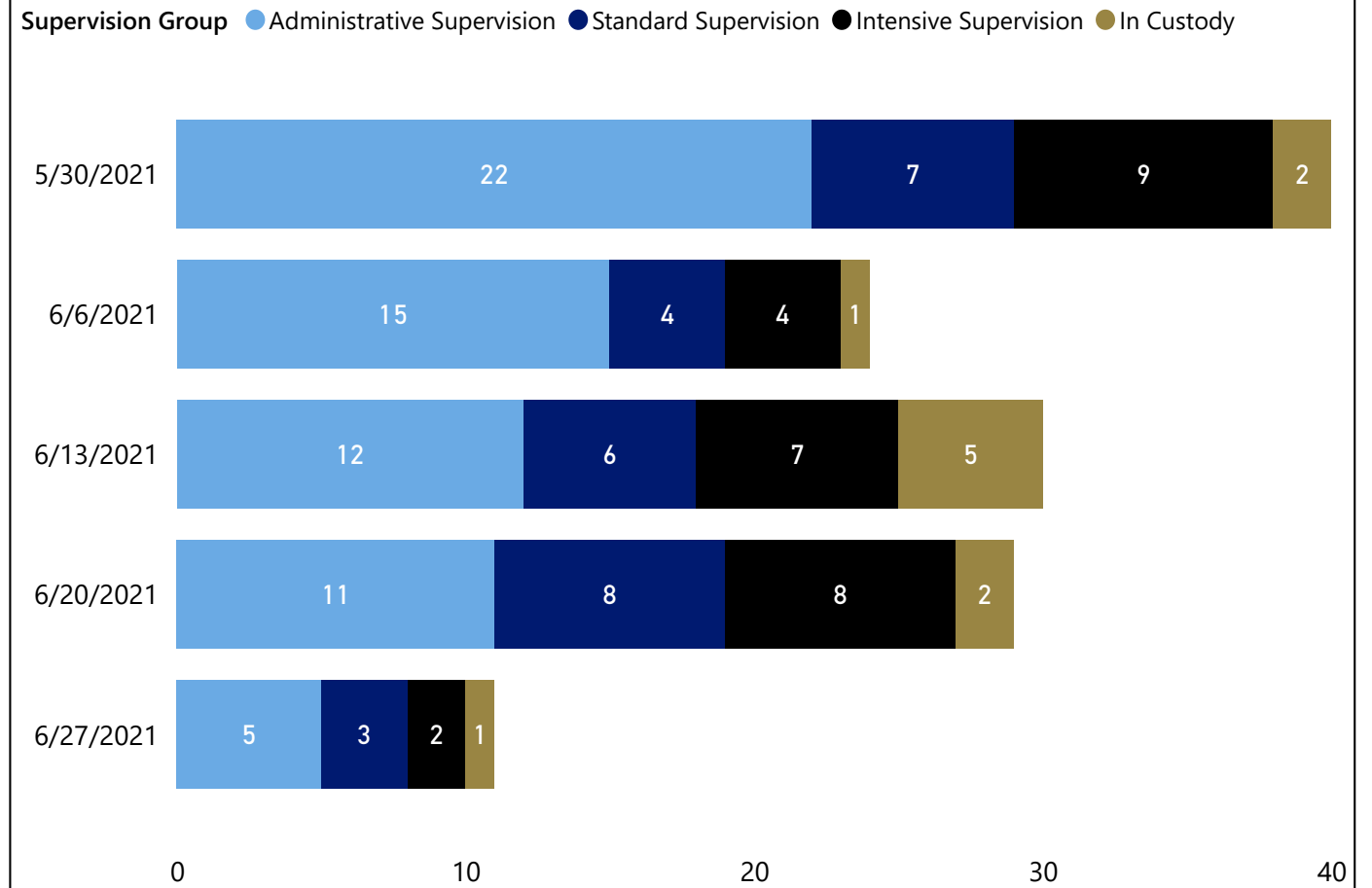
161 Supervisions Closed

A person can be referred to pretrial supervision by a district or superior court judge. They can be assigned to supervision on more than one charge or might not be referred to supervision for all pending charges. For the purposes of this report, a supervision is counted as one supervision regardless of the number of charges they have been referred to supervision for. For example, if a person has six pending charges in Buncombe County, and they have been referred to Pretrial on four of those charges, that is counted as one supervision.

Number of Supervisions Opened and Closed by Week



Opened Supervisions by Week and Supervision Group

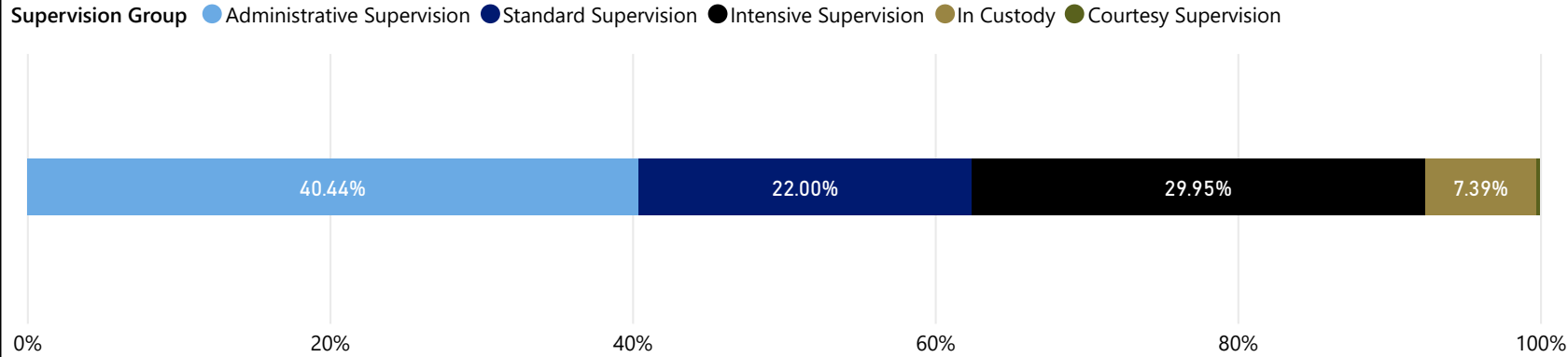


June Active Supervisions

921
Average Daily Caseload

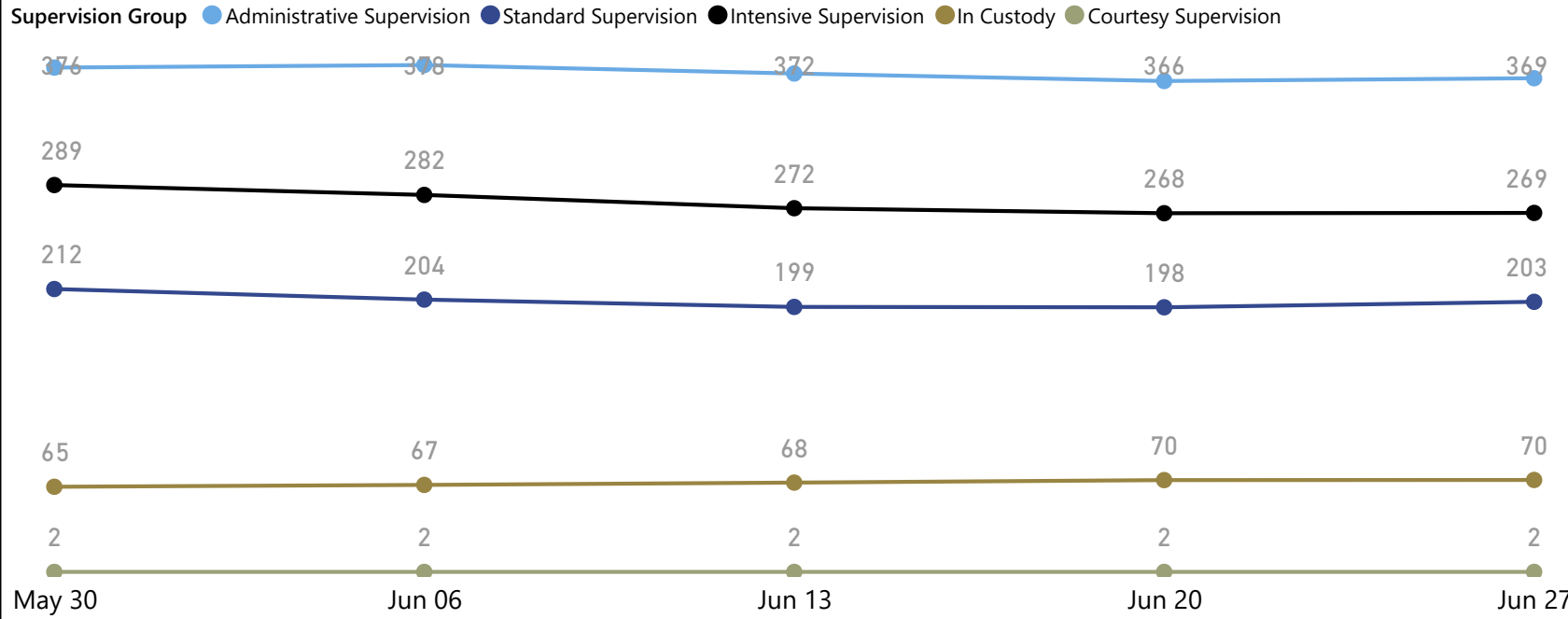
1,066
Active During Period

Average Daily Caseload by Supervision Group

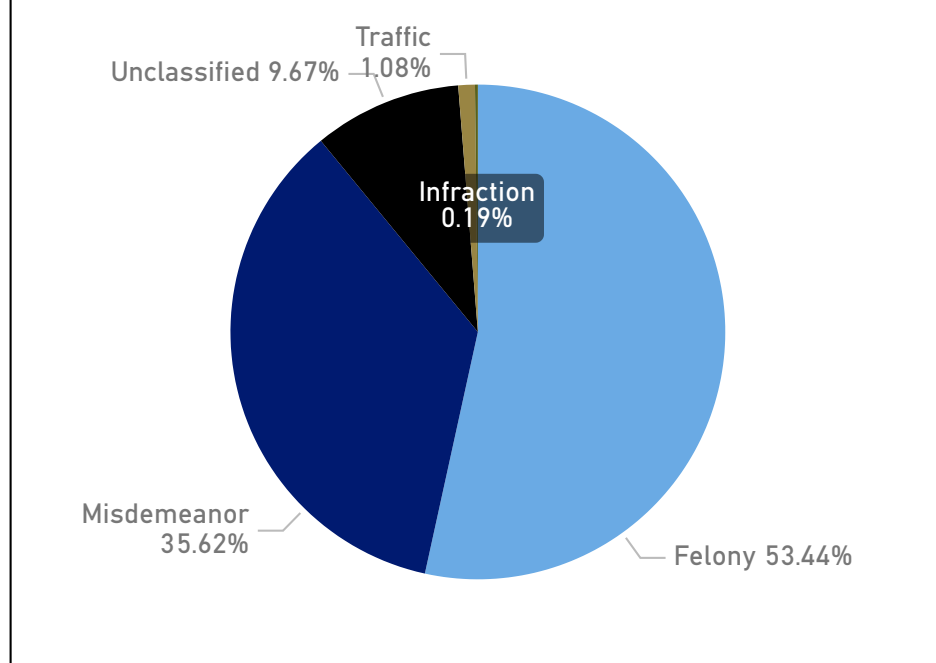


Fiscal Month	Average Daily Caseload	Active During Period
July	1,097	1,252
August	1,089	1,247
September	1,069	1,257
October	1,023	1,195
November	992	1,125
December	1,010	1,140
January	1,076	1,174
February	1,062	1,200
March	1,023	1,172
April	991	1,103
May	965	1,098
Total	1,036	2,695

Average Daily Caseload by Week



Average Daily Caseload by Top Charge Type

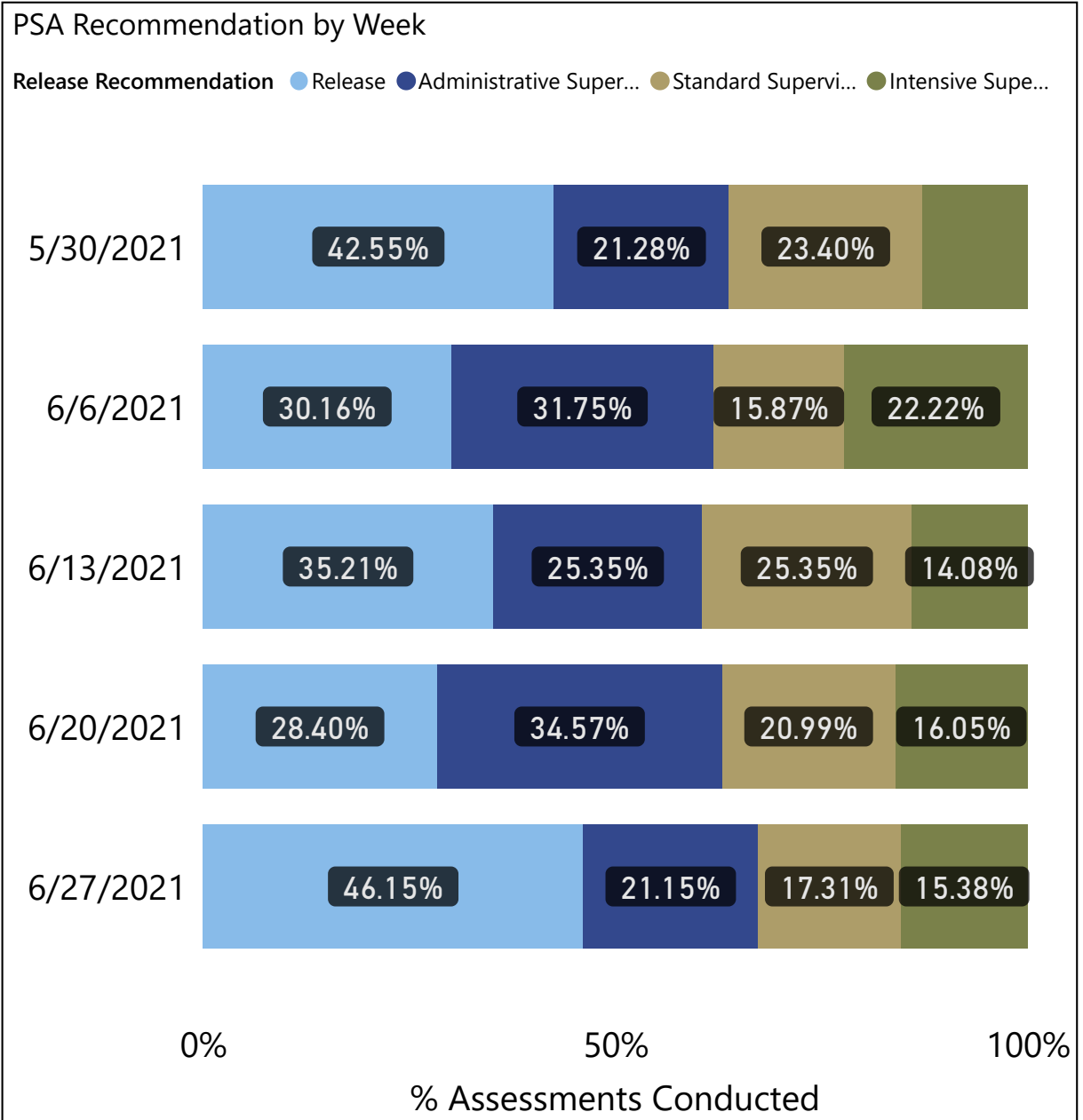
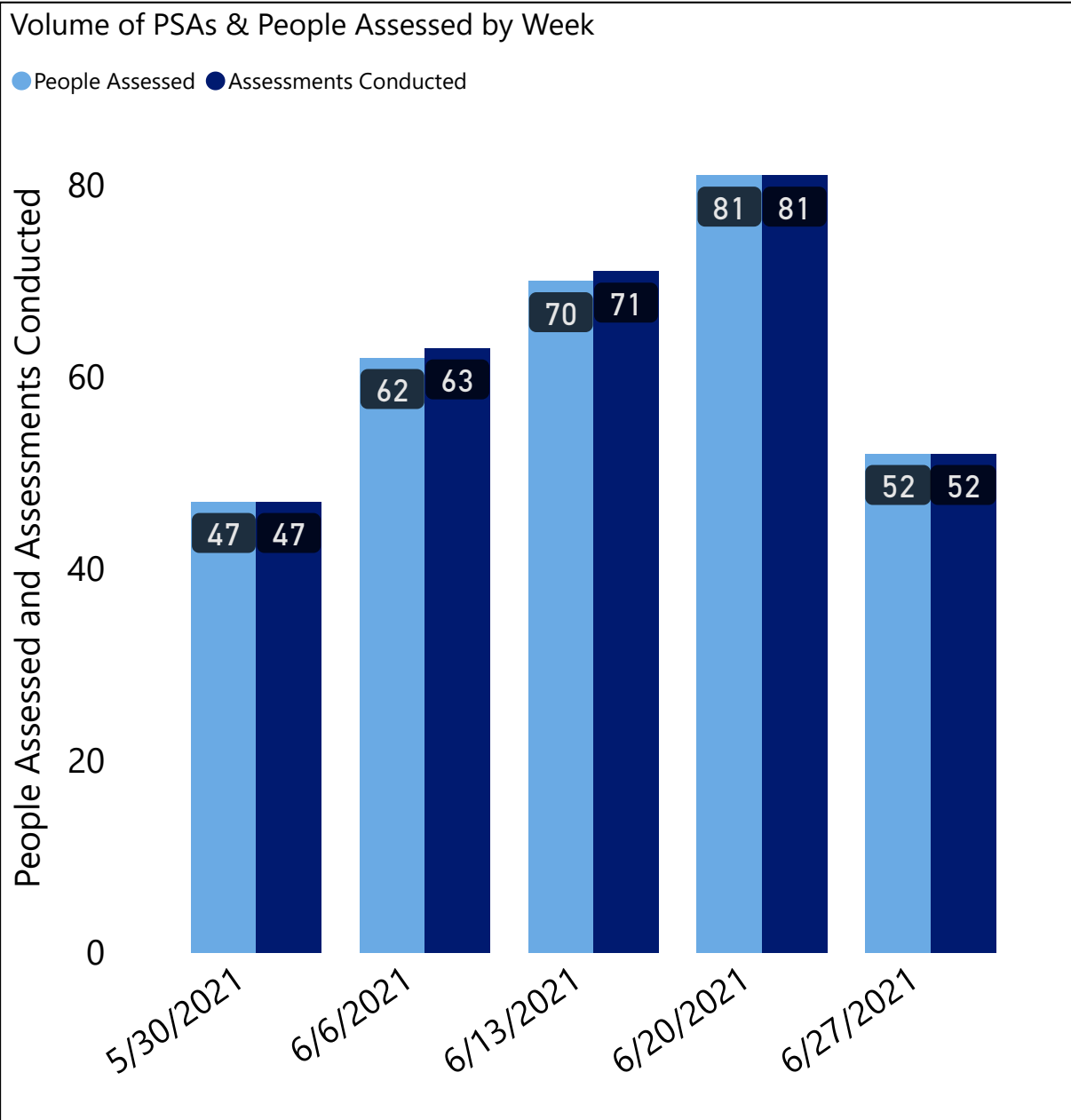


June PSA Volume

314 Assessments

308 People

(Blank) Overr...



June PSA Accuracy

190

PSAs Audited

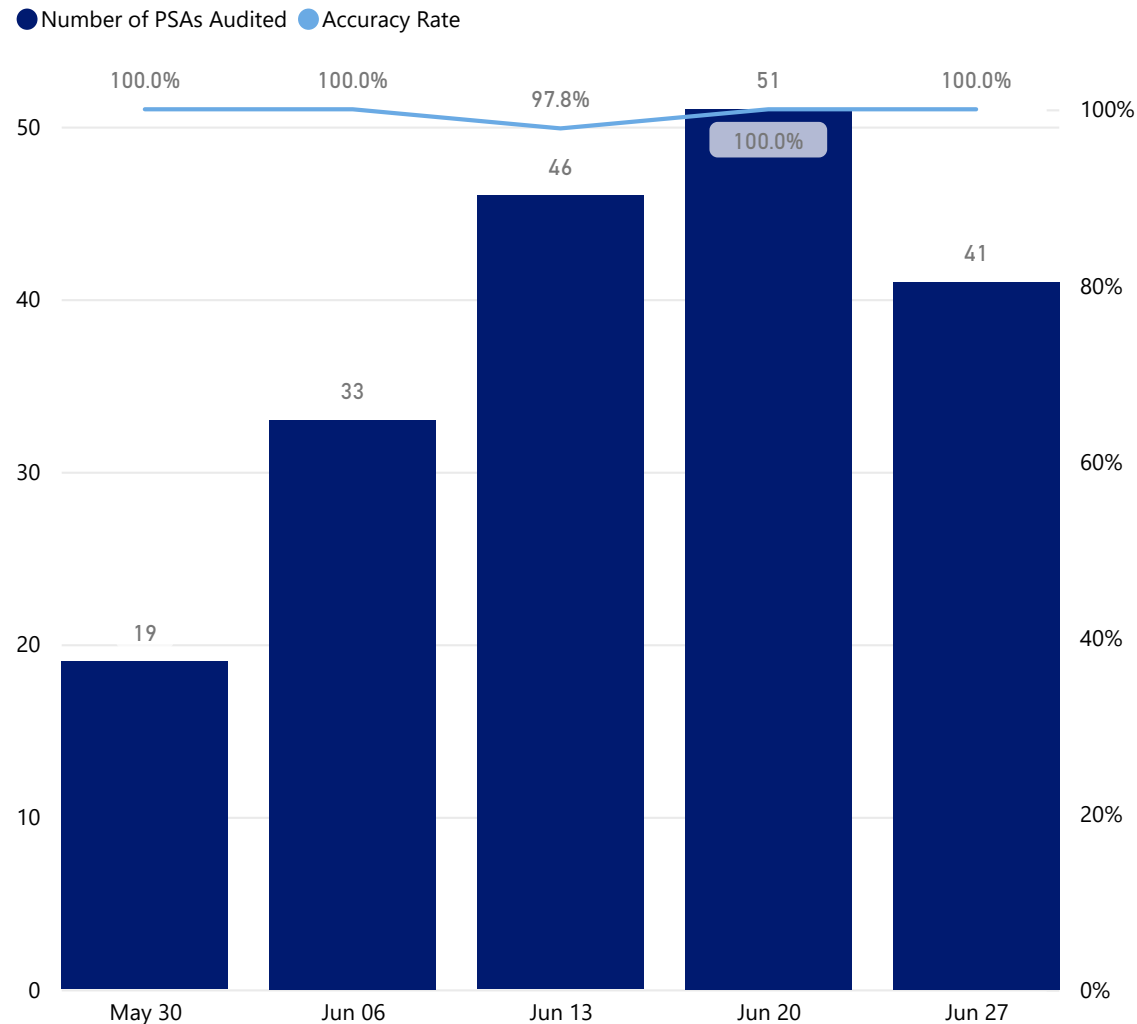
1

PSAs with Errors

99.5%

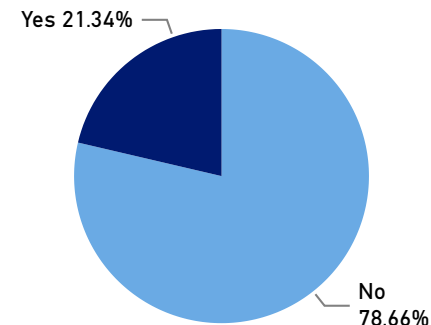
Accuracy Rate

PSAs Audited and Accuracy Rate by Week



PSA Risk Factors

% NCA Violent Flag

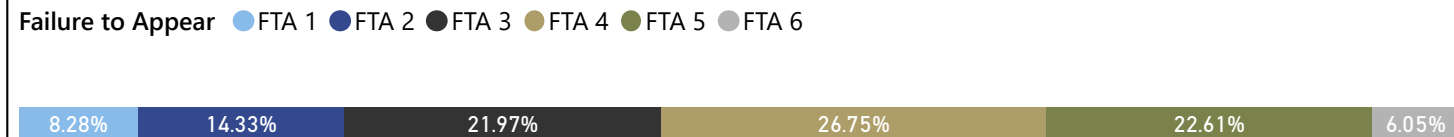


Buncombe County Release Conditions Matrix

Failure to Appear (FTA) Scaled Score	New Criminal Activity (NCA) Scaled Score					
	1	2	3	4	5	6
1 (90% Appear to Court)	WPA or Unsecured (no pretrial supervision)	WPA or Unsecured (no pretrial supervision)				
2 (85% Appear to Court)	WPA or Unsecured (no pretrial supervision)	WPA or Unsecured (no pretrial supervision)	WPA or Unsecured (no pretrial supervision)	Unsecured or Administrative	Standard	
3 (80% Appear to Court)		WPA or Unsecured (no pretrial supervision)	WPA or Unsecured (no pretrial supervision)	Unsecured or Administrative	Standard	Standard or Intensive
4 (69% Appear to Court)		WPA or Unsecured (no pretrial supervision)	Unsecured or Administrative	Administrative or Standard	Standard	Intensive
5 (65% Appear to Court)		WPA or Unsecured (no pretrial supervision)	Unsecured or Administrative	Administrative or Standard	Standard or Intensive	Intensive
6 (60% Appear to Court)				Standard	Standard or Intensive	Intensive

Failure to Appear	NCA 1	NCA 2	NCA 3	NCA 4	NCA 5	NCA 6	Total
FTA 1	18	8					26
FTA 2	2	11	22	10			45
FTA 3		9	24	20	13	3	69
FTA 4		7	16	36	16	9	84
FTA 5		1	9	27	30	4	71
FTA 6				2	5	12	19
Total	20	36	71	95	64	28	314

Volume % by FTA Risk



Volume % by NCA Risk



Fiscal Year 2021 Concurrency

1,737

Opened Supervision

586

Judicial Override

66.3%

Concurrency Rate

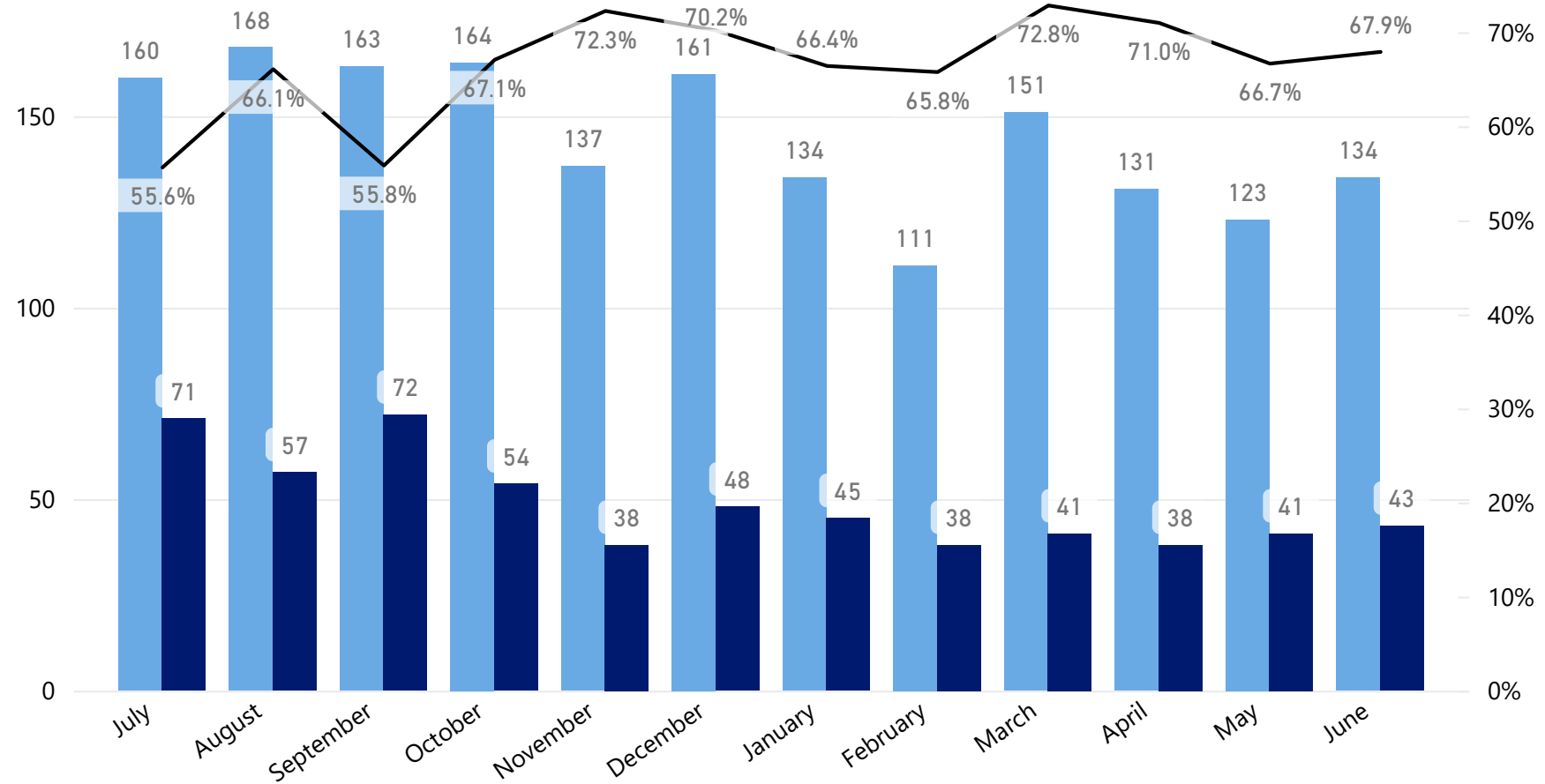
348 supervisions opened have no release recommendation identified.

30.9% of supervisions were recommended for release.

Release Recommended

Supervision Level	Number of Supervisions
Administrative Supervision	482
Standard Supervision	20
Intensive Supervision	12
In Custody	23
Total	537

● Opened Supervisions ● Number of Supervisions with Judicial Override ● Concurrency Rate



Release Recommendation by Release Decision

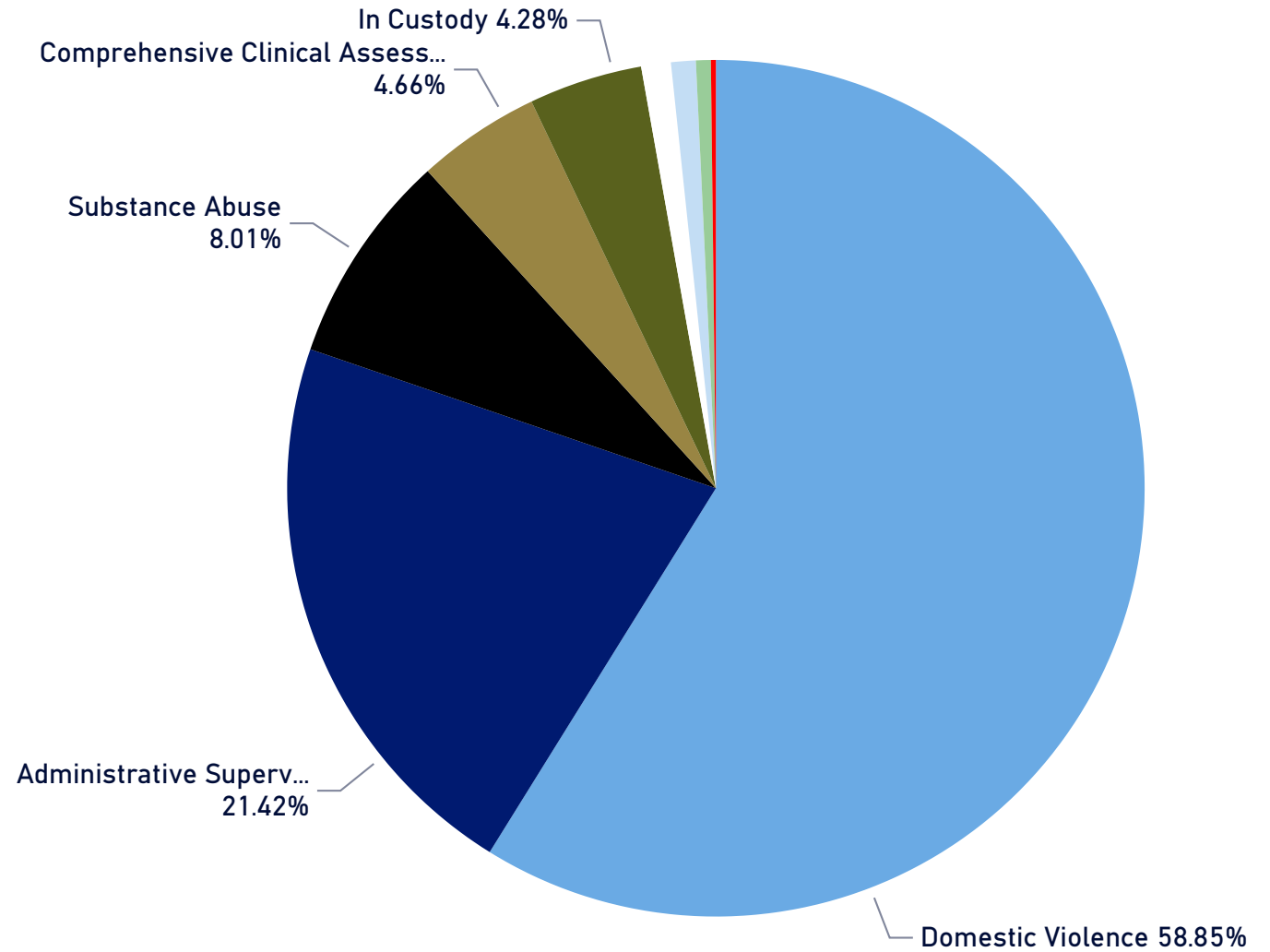
Release Decision	Release	Administrative Supervision	Standard Supervision	Intensive Supervision	Total
	187				187
Release	1				1
Administrative Supervision	45	521	271	5	842
Standard Supervision	87	11	12	313	427
Intensive Supervision	45	6	9	19	467
Total	348	537	291	333	1,737

Fiscal Year 2021 Concurrency Details

PSA Release Recommended

Supervision Level	Number of Supervisions
Administrative Supervision	482
Administrative - DV	287
Administrative	115
Administrative - SA	41
Administrative - CCA	25
Administrative-EM/DV(CAITLYNS C)	9
Administrative - MH	5
In Custody	23
IN CUSTODY	23
Standard Supervision	20
Moderate - DV	14
Moderate Supervision	6
Intensive Supervision	12
Intensive - EM/DV (CAITLYN'S C.)	4
Intensive - EM	3
Intensive - DV	2
Intensive - SA	2
Intensive	1
Total	537

PSA Release Recommended by Supervision Track



Fiscal Year 2021 Technical Violations

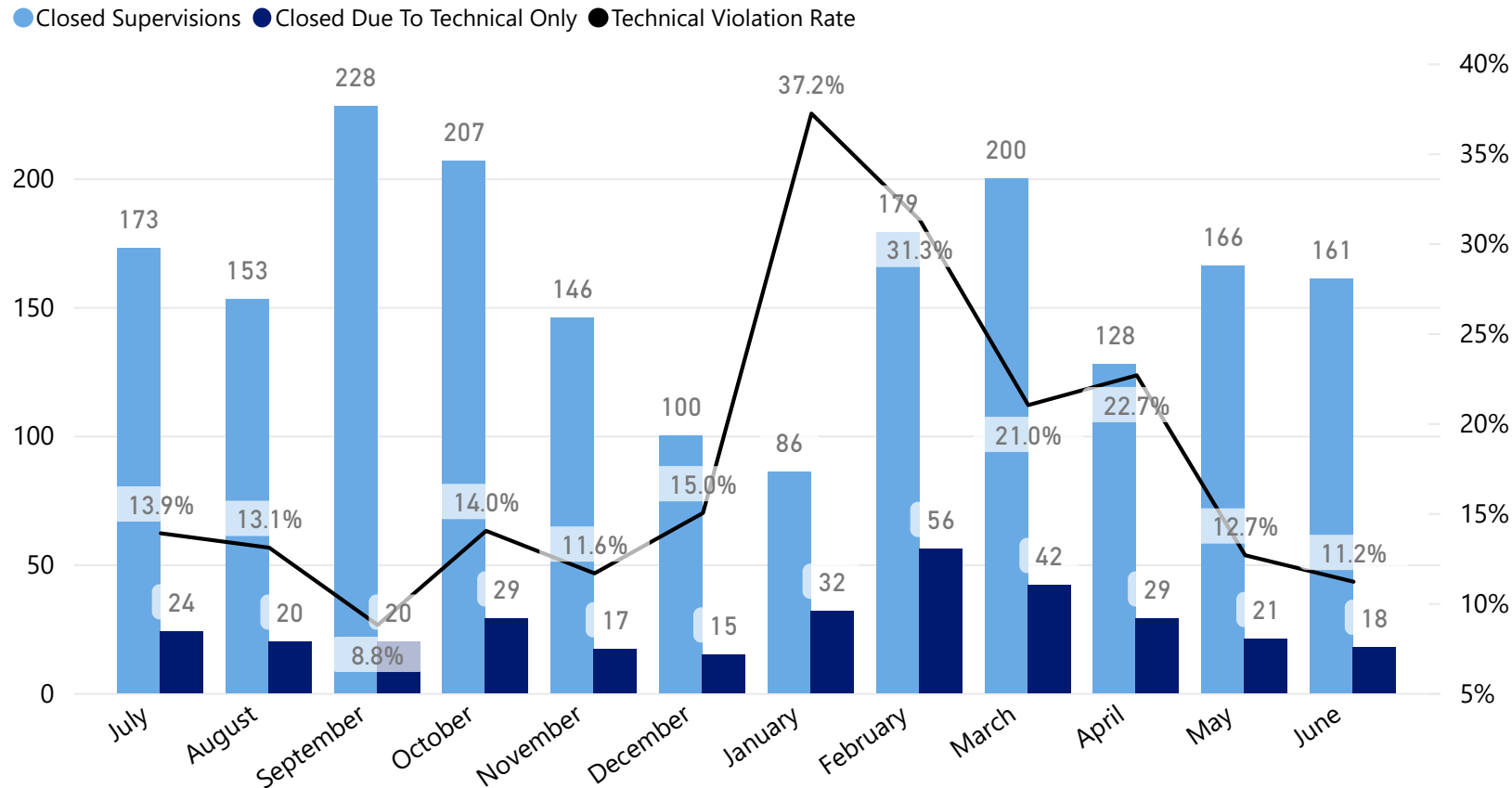
1,926
Closed Supervisions

323
Closed - Technical Only

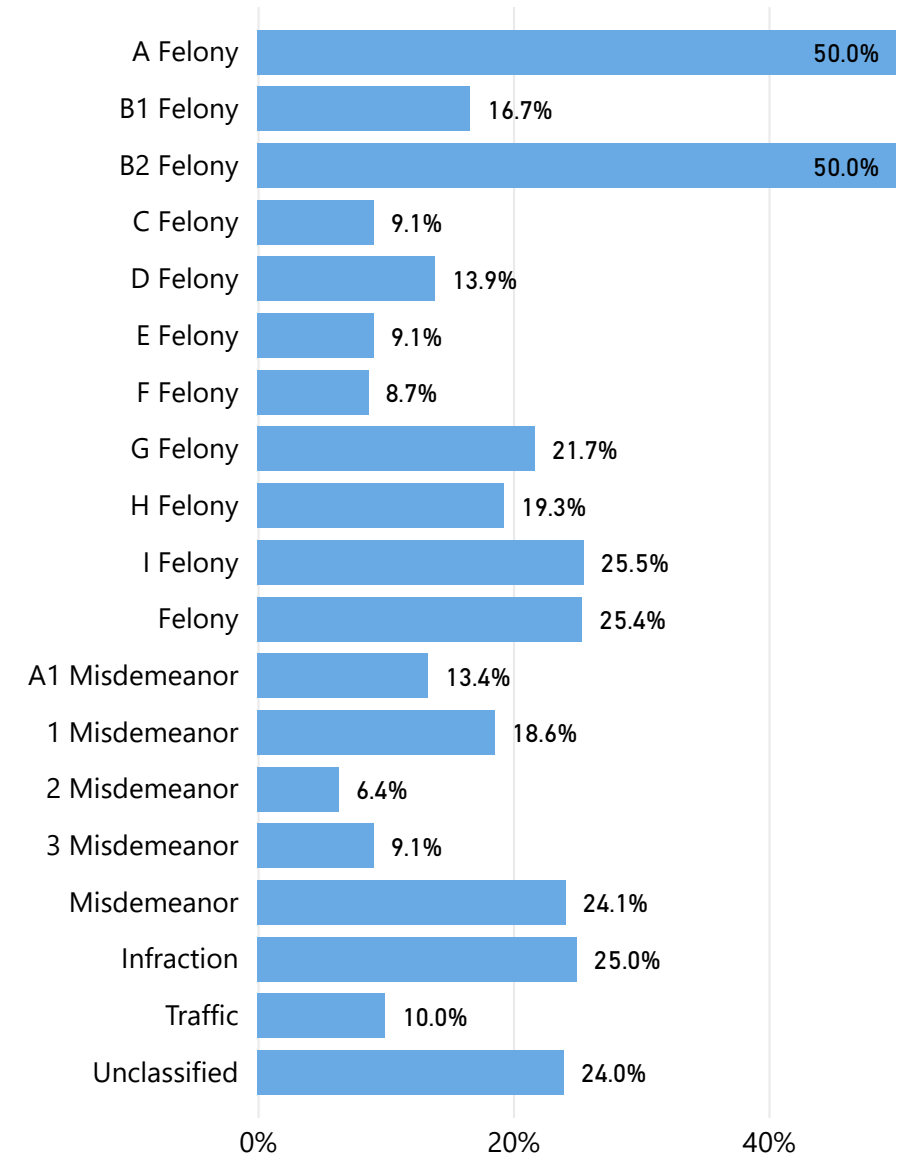
16.8%
Tech. Violation Rate

When a supervision is closed, it is flagged as successful or unsuccessful. Unsuccessful supervisions are closed due to the following reasons: a new charge occurs, an individual fails to appear in court, an individual violates release conditions (technical violation), or some combination thereof. A closed supervision that is unsuccessful is counted as a technical violation if "technical violation" is the only disposition reason identified on the supervision.

Technical Violations by Month



Technical Violation Rate by Top Charge Offense Level



Fiscal Year 2021 Public Safety Rate

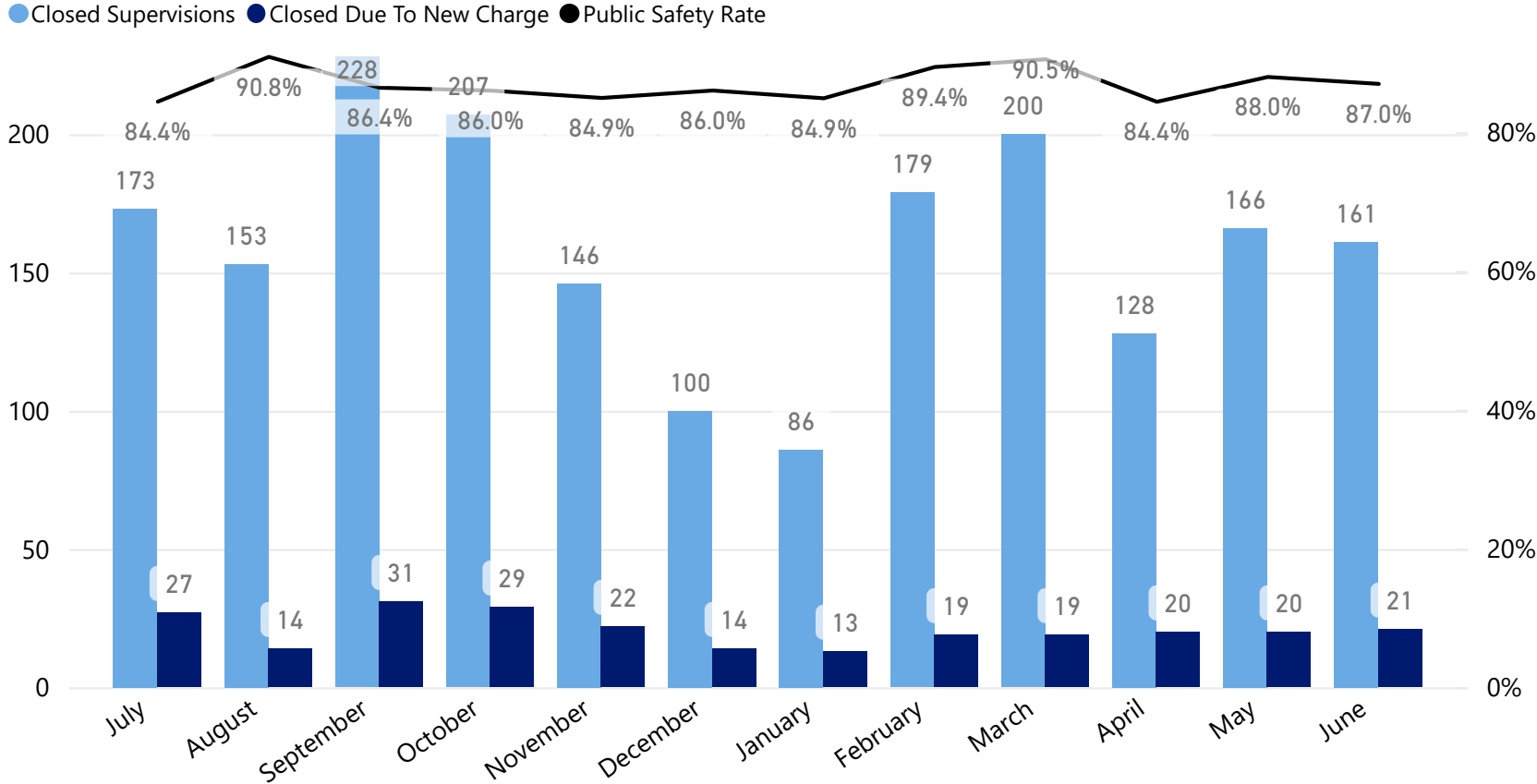
1,926
Closed Supervisions

249
Closed - New Charge

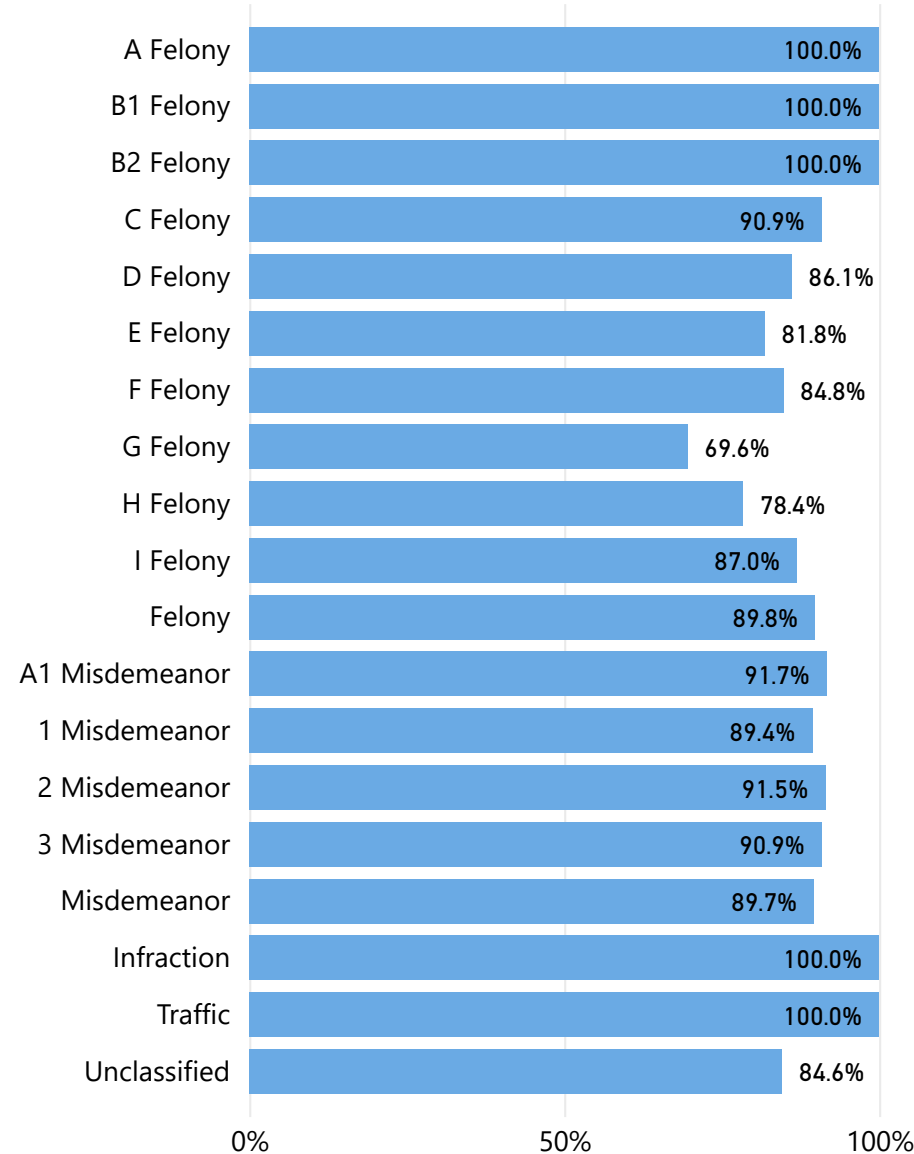
87.1%
Public Safety Rate

When a supervision is closed, it is flagged as successful or unsuccessful. Unsuccessful supervisions are closed due to the following reasons: a new charge occurs, an individual fails to appear in court, an individual violates release conditions (technical violation), or some combination thereof. A closed supervision that is unsuccessful is closed due to new charge if "new charge" is one of the disposition reasons identified on the supervision.

New Charges by Month



Public Safety Rate by Top Charge Offense Level



Fiscal Year 2021 Appearance Rate

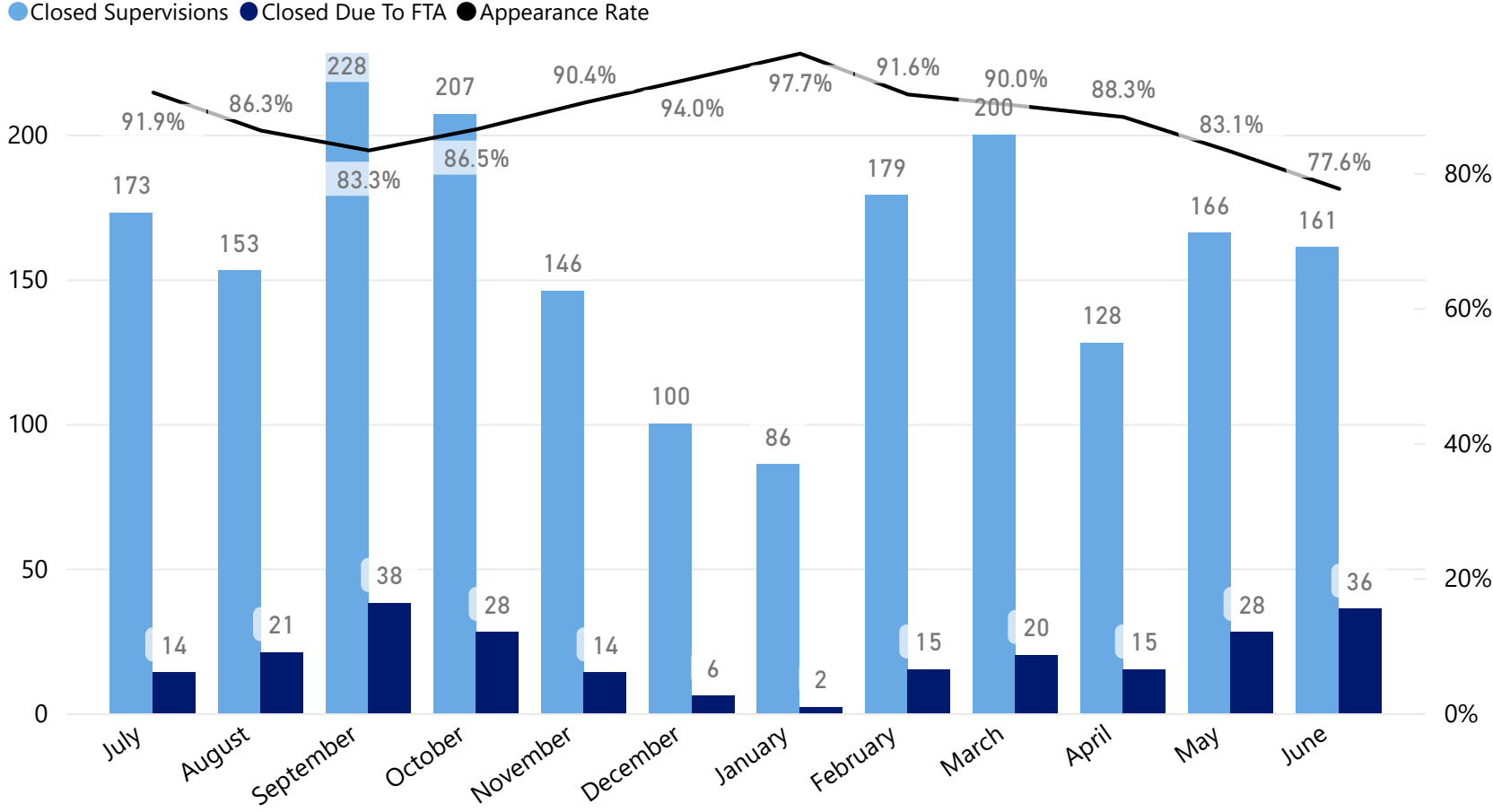
1,926
Closed Supervisions

237
Closed Due To FTA

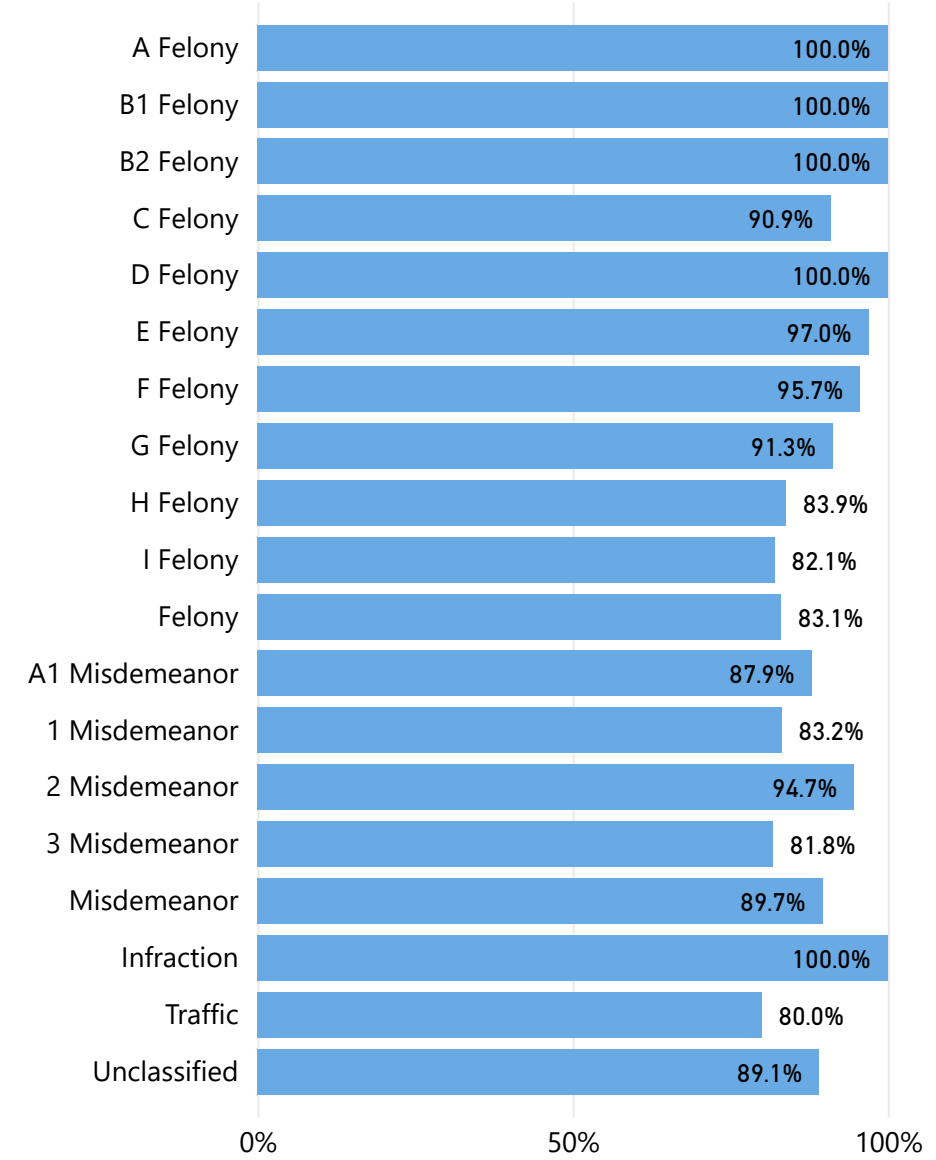
87.7%
Appearance Rate

When a supervision is closed, it is flagged as successful or unsuccessful. Unsuccessful supervisions are closed due to the following reasons: a new charge occurs, an individual fails to appear in court, an individual violates release conditions (technical violation), or some combination thereof. A closed supervision that is unsuccessful is closed due to FTA if "FTA" is one of the disposition reasons identified on the supervision.

FTAs by Month



Appearance Rate by Top Charge Offense Level



Fiscal Year 2021 Supervisions Opened

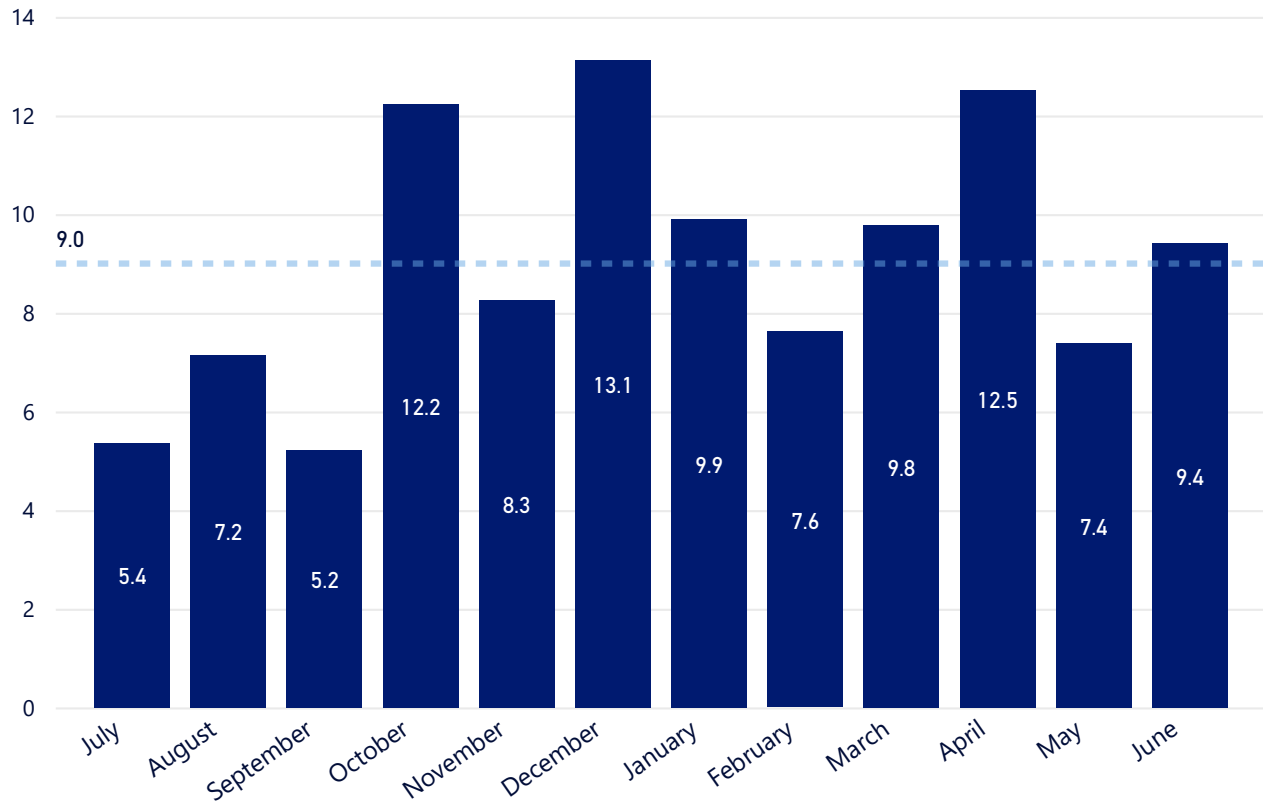
135,011

Total Estimated Bed Days Saved

370

Estimated Beds Saved per Day

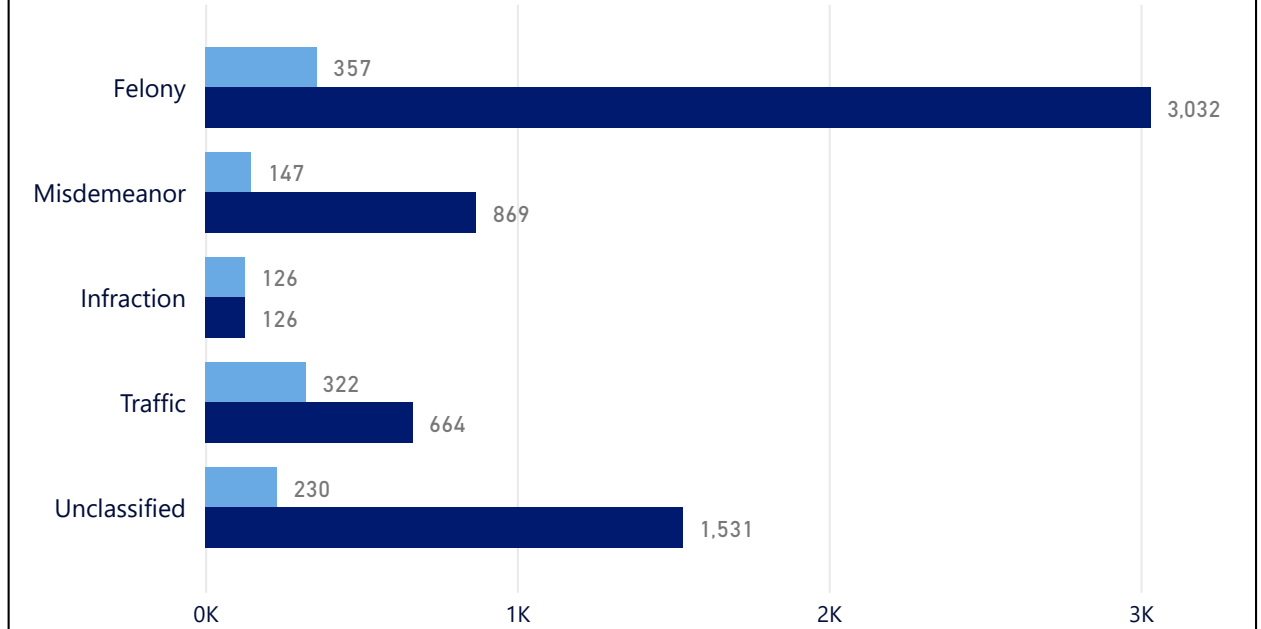
Average Days Between Booking and Referral by Month



907 Supervisions Currently Opened

Days On Supervision by Top Charge Type - In Community

● Average Days On Supervision ● Maximum Days On Supervision



Days On Supervision - In Custody

● Average Days On Supervision ● Maximum Days On Supervision

