



# PRETRIAL SERVICES MONTHLY REPORT

Open and Closed Supervisions, Active Cases in Period,  
PSA Volume, PSA Accuracy, PSA Risk Factors, PSA Concurrency, Technical Violations,  
Public Safety Rate, and Appearance Rate

Report Period: **May, Fiscal Year 2021**



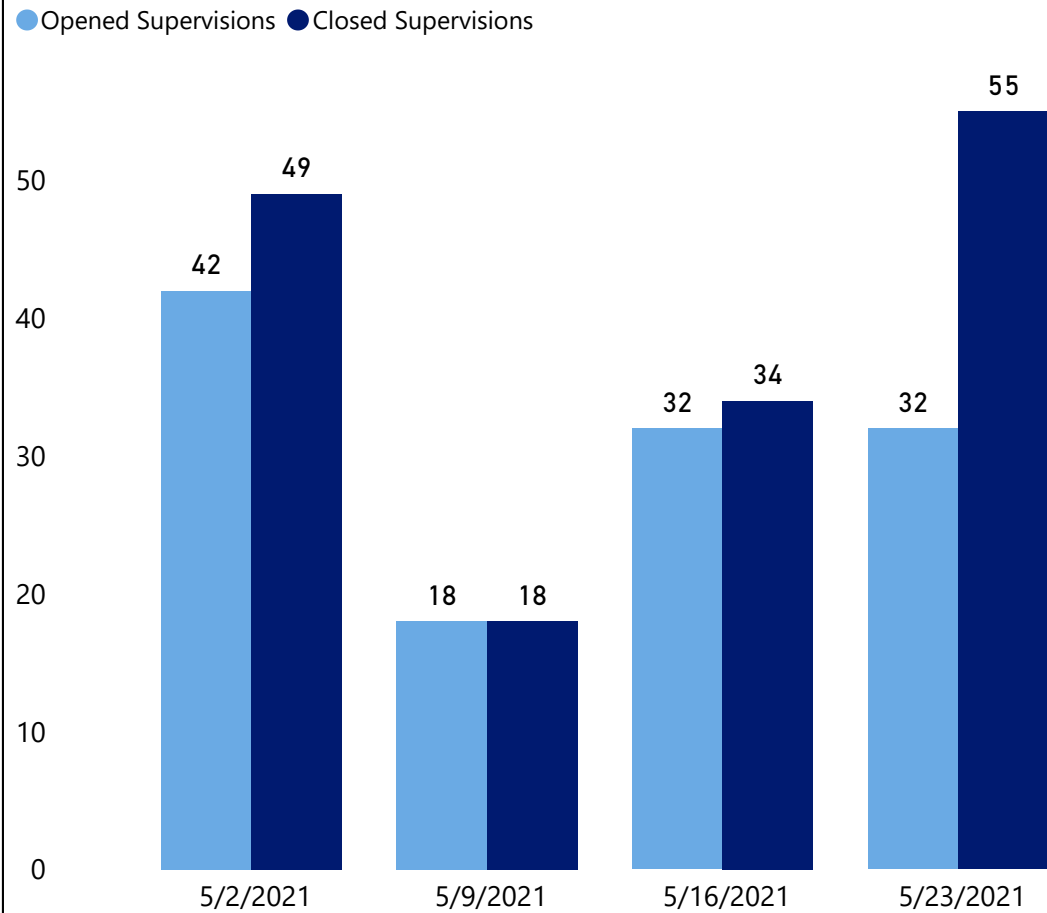
# May Referrals and Closures

**124** Supervisions Opened

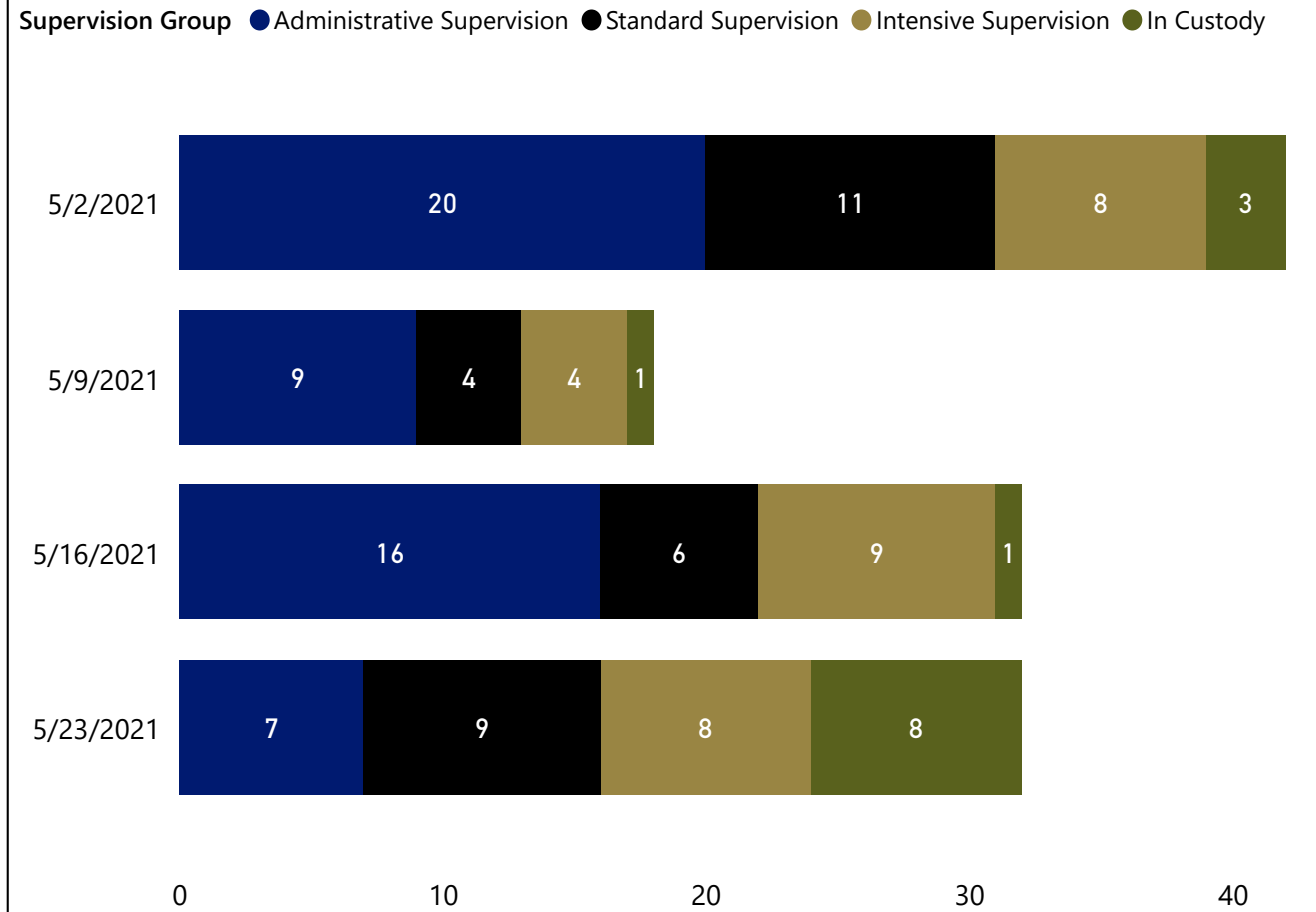
**156** Supervisions Closed

A person can be referred to pretrial supervision by a district or superior court judge. They can be assigned to supervision on more than one charge or might not be referred to supervision for all pending charges. For the purposes of this report, a supervision is counted as one supervision regardless of the number of charges they have been referred to supervision for. For example, if a person has six pending charges in Buncombe County, and they have been referred to Pretrial on four of those charges, that is counted as one supervision.

Number of Supervisions Opened and Closed by Week



Opened Supervisions by Week and Supervision Group

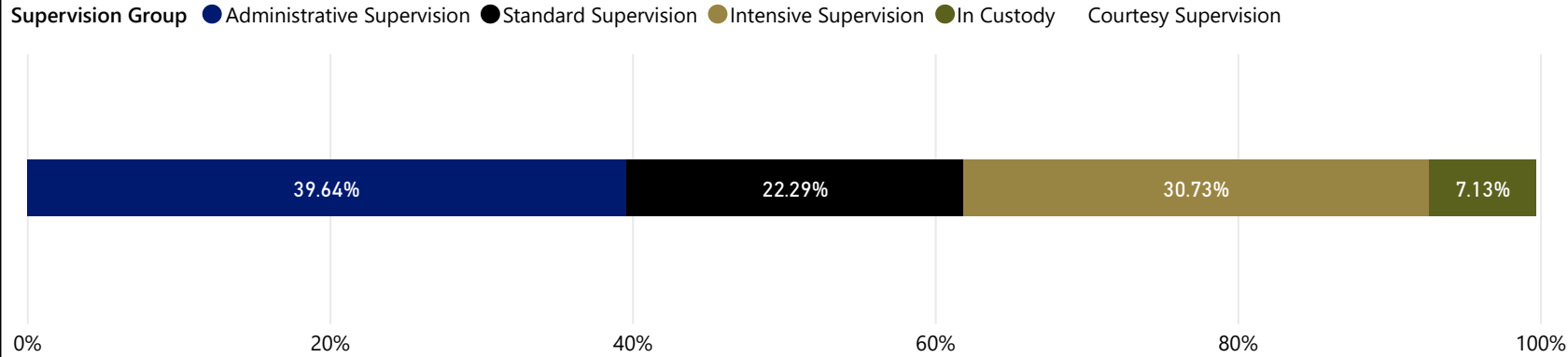


# May Active Supervisions

**980**  
Average Daily Caseload

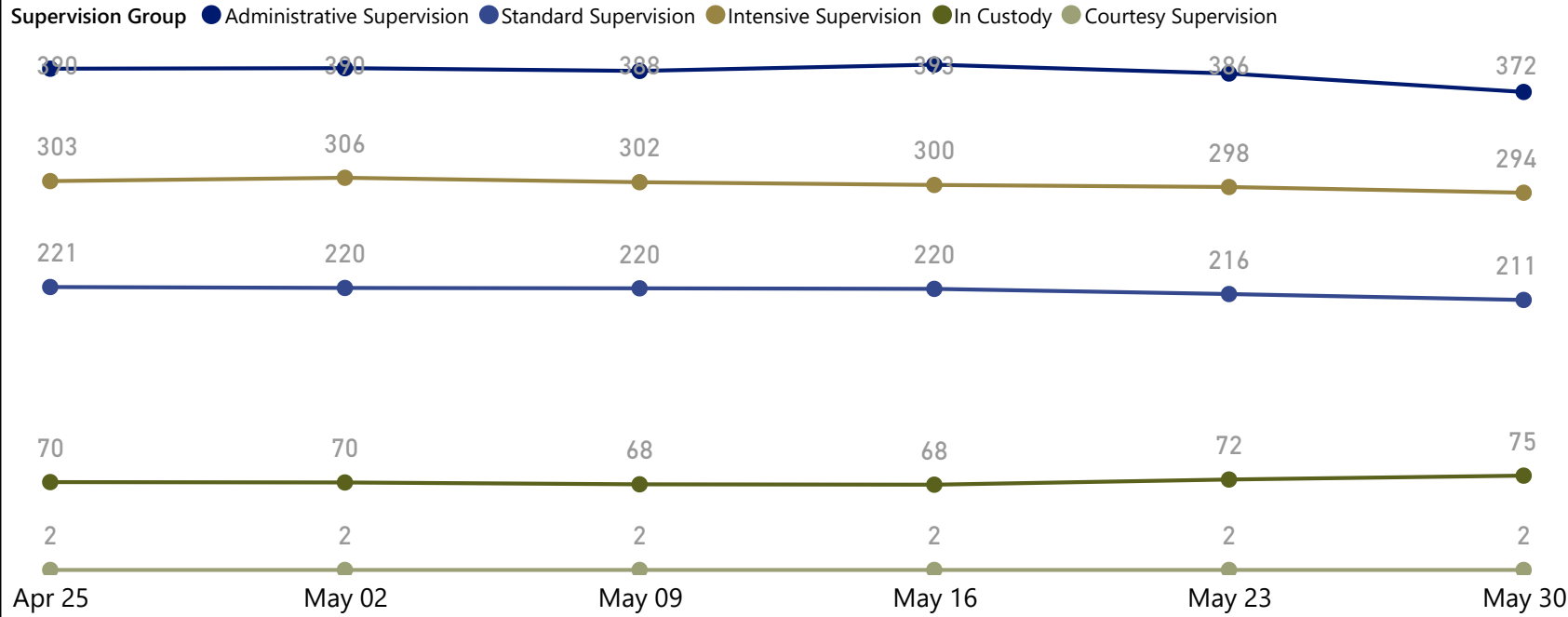
**1,110**  
Active During Period

## Average Daily Caseload by Supervision Group

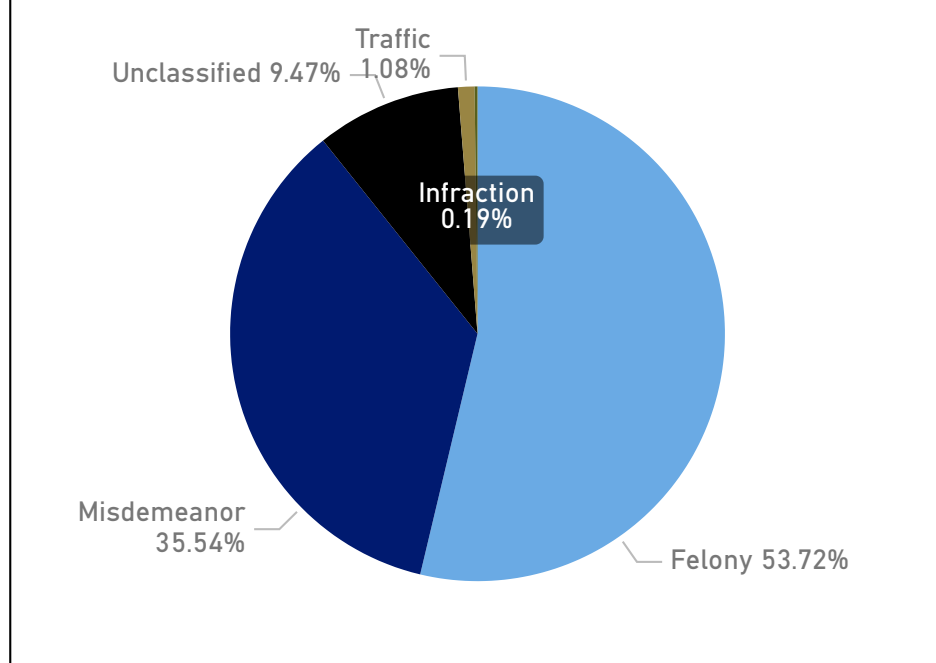


Fiscal Month	Average Daily Caseload	Active During Period
July	1,102	1,257
August	1,094	1,252
September	1,074	1,262
October	1,028	1,200
November	997	1,130
December	1,016	1,146
January	1,082	1,180
February	1,068	1,206
March	1,029	1,178
April	999	1,111
<b>Total</b>	<b>1,049</b>	<b>2,579</b>

## Average Daily Caseload by Week



## Average Daily Caseload by Top Charge Type

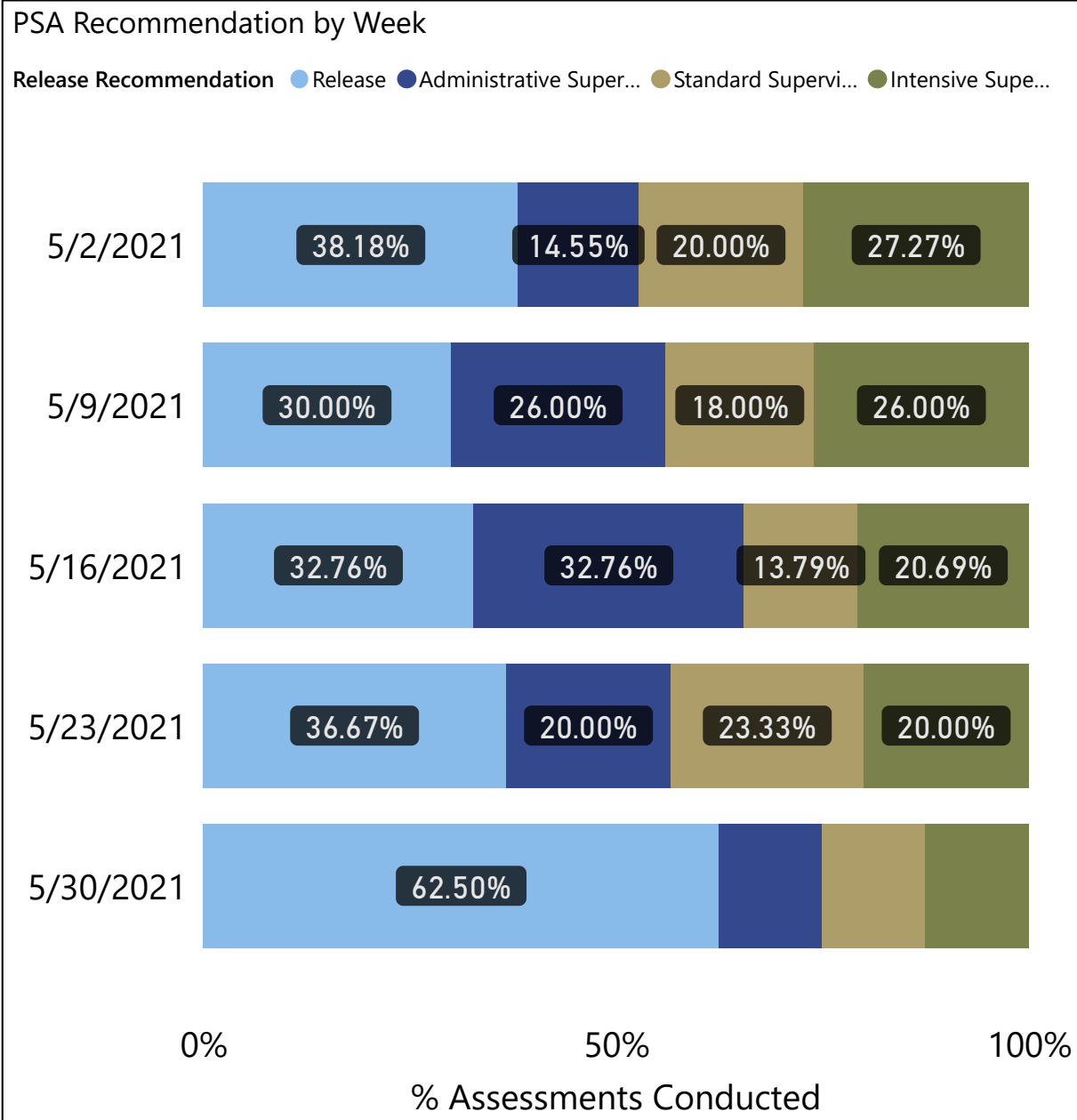
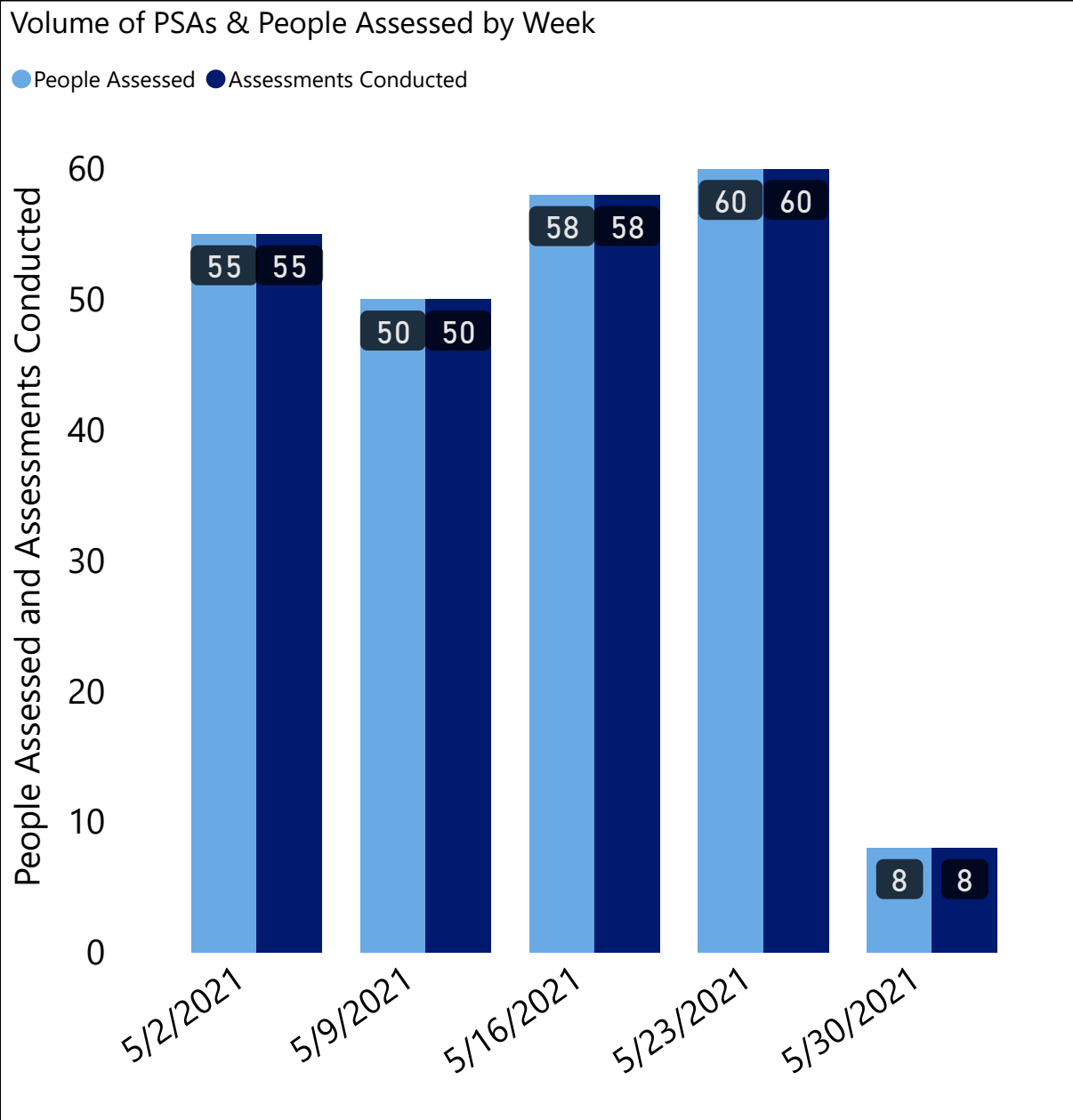


# May PSA Volume

**231** Assessments

**226** People

**1** Overrides



# May PSA Accuracy

184

PSAs Audited

1

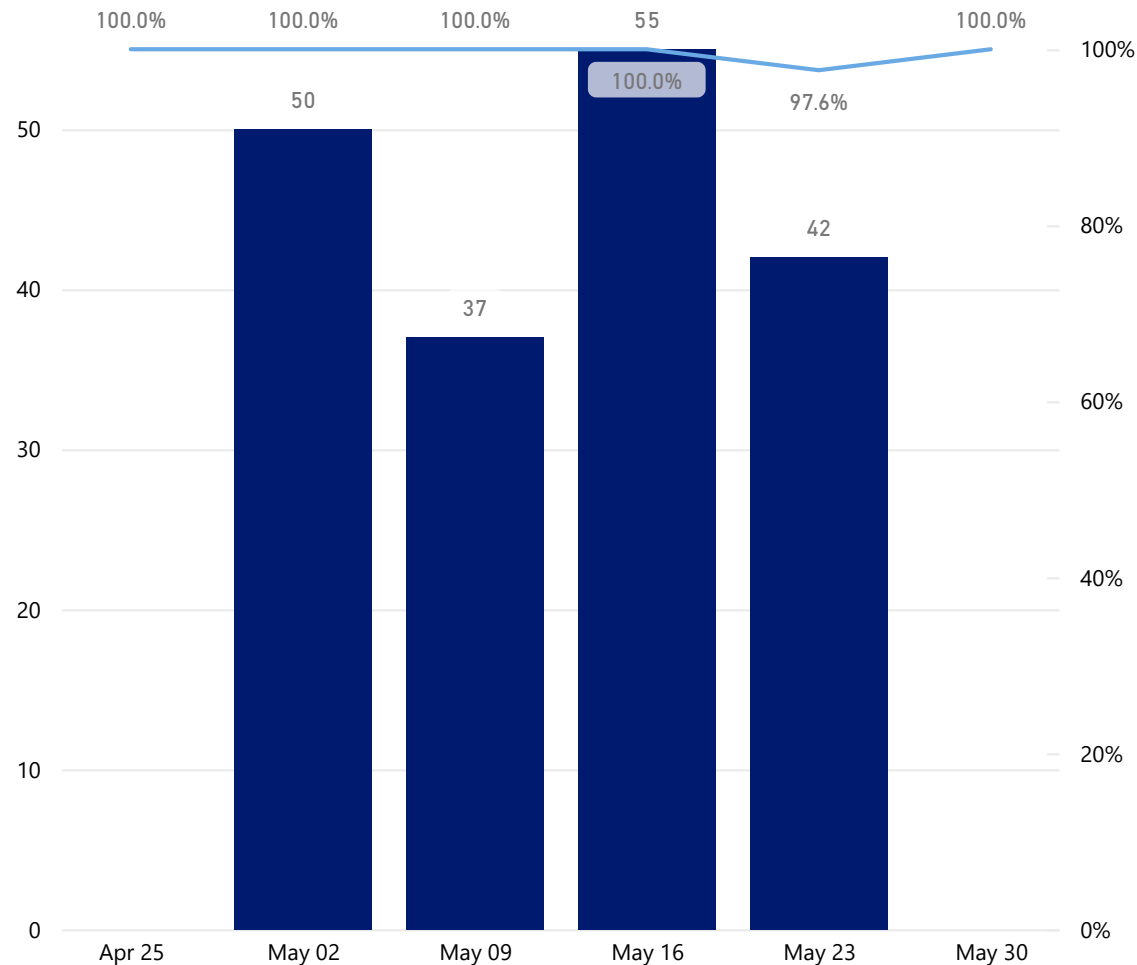
PSAs with Errors

99.5%

Accuracy Rate

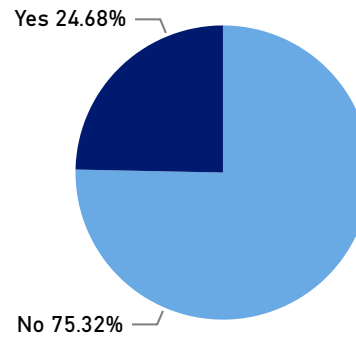
PSAs Audited and Accuracy Rate by Week

● Number of PSAs Audited ● Accuracy Rate



# PSA Risk Factors

% NCA Violent Flag



Buncombe County Release Conditions Matrix

Failure to Appear (FTA) Scaled Score	New Criminal Activity (NCA) Scaled Score					
	1	2	3	4	5	6
1 (90% Appear to Court)	WPA or Unsecured (no pretrial supervision)	WPA or Unsecured (no pretrial supervision)				
2 (85% Appear to Court)	WPA or Unsecured (no pretrial supervision)	WPA or Unsecured (no pretrial supervision)	WPA or Unsecured (no pretrial supervision)	Unsecured or Administrative	Standard	
3 (80% Appear to Court)		WPA or Unsecured (no pretrial supervision)	WPA or Unsecured (no pretrial supervision)	Unsecured or Administrative	Standard	Standard or Intensive
4 (69% Appear to Court)		WPA or Unsecured (no pretrial supervision)	Unsecured or Administrative	Administrative or Standard	Standard	Intensive
5 (65% Appear to Court)		WPA or Unsecured (no pretrial supervision)	Unsecured or Administrative	Administrative or Standard	Standard or Intensive	Intensive
6 (60% Appear to Court)				Standard	Standard or Intensive	Intensive

Failure to Appear	NCA 1	NCA 2	NCA 3	NCA 4	NCA 5	NCA 6	Total
FTA 1	15	3					18
FTA 2	1	9	11	13			34
FTA 3		6	20	14	10	4	54
FTA 4		4	12	22	18	8	64
FTA 5			5	20	11	8	44
FTA 6					1	4	17
<b>Total</b>	<b>16</b>	<b>22</b>	<b>48</b>	<b>70</b>	<b>43</b>	<b>32</b>	<b>231</b>

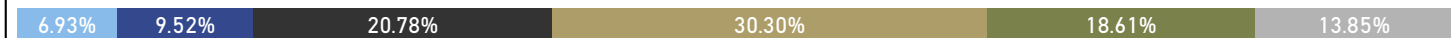
Volume % by FTA Risk

Failure to Appear ● FTA 1 ● FTA 2 ● FTA 3 ● FTA 4 ● FTA 5 ● FTA 6



Volume % by NCA Risk

New Criminal Activity ● NCA 1 ● NCA 2 ● NCA 3 ● NCA 4 ● NCA 5 ● NCA 6



# Fiscal Year 2021 Concurrency

1,607

Opened Supervision

545

Judicial Override

66.1%

Concurrency Rate

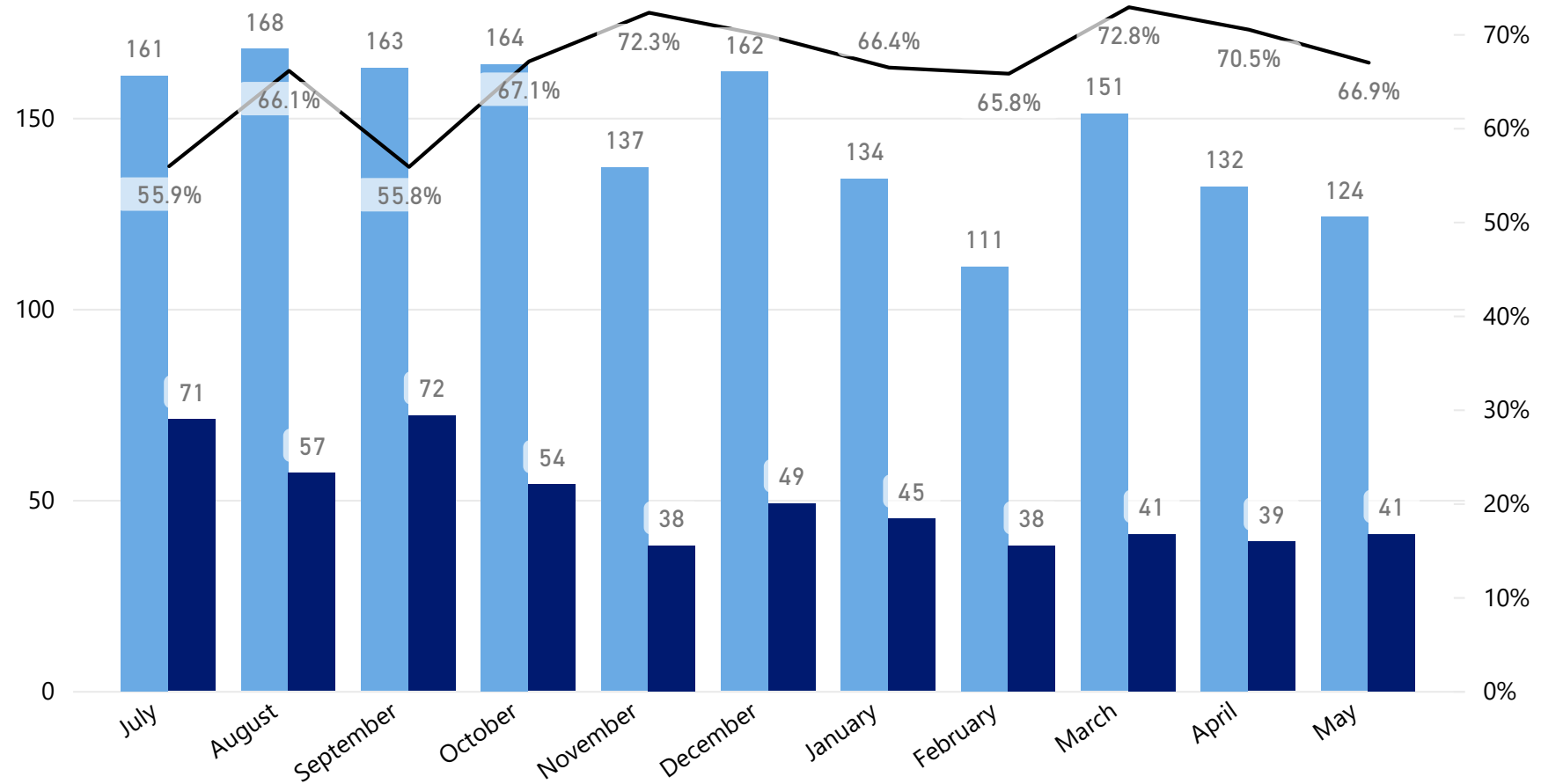
**318** supervisions opened have no release recommendation identified.

**30.9%** of supervisions were recommended for release.

## Release Recommended

Supervision Level	Number of Supervisions
Administrative Supervision	441
Standard Supervision	20
Intensive Supervision	12
In Custody	23
<b>Total</b>	<b>496</b>

● Opened Supervisions ● Number of Supervisions with Judicial Override ● Concurrency Rate



## Release Recommendation by Release Decision

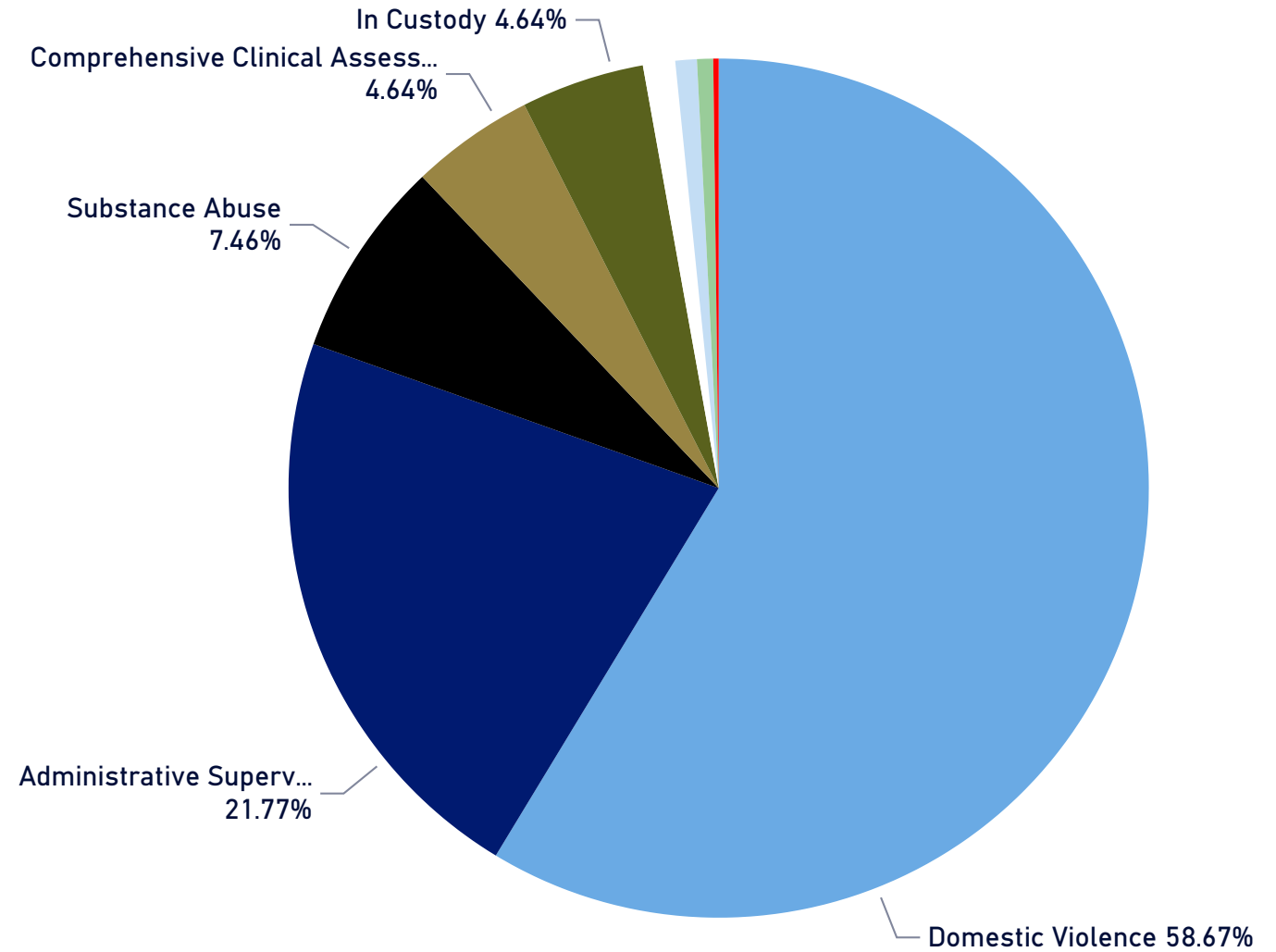
Release Decision	Release	Administrative Supervision	Standard Supervision	Intensive Supervision	Total
	172				<b>172</b>
Administrative Supervision	42	480	245	5	<b>772</b>
Standard Supervision	78	11	12	290	<b>395</b>
Intensive Supervision	42	6	9	19	<b>365</b>
<b>Total</b>	<b>318</b>	<b>496</b>	<b>265</b>	<b>310</b>	<b>1,607</b>

# Fiscal Year 2021 Concurrency Details

## PSA Release Recommended

Supervision Level	Number of Supervisions
<b>Administrative Supervision</b>	<b>441</b>
Administrative - DV	269
Administrative	108
Administrative - SA	35
Administrative - CCA	23
Administrative - MH	4
Administrative-EM/DV(CAITLYNS C)	2
<b>In Custody</b>	<b>23</b>
IN CUSTODY	23
<b>Standard Supervision</b>	<b>20</b>
Moderate - DV	14
Moderate Supervision	6
<b>Intensive Supervision</b>	<b>12</b>
Intensive - EM/DV (CAITLYN'S C.)	4
Intensive - DV	2
Intensive - EM	2
Intensive - SA	2
Intensive	1
Intensive - EM (Wait List)	1
<b>Total</b>	<b>496</b>

## PSA Release Recommended by Supervision Track



# Fiscal Year 2021 Technical Violations

1,750  
Closed Supervisions

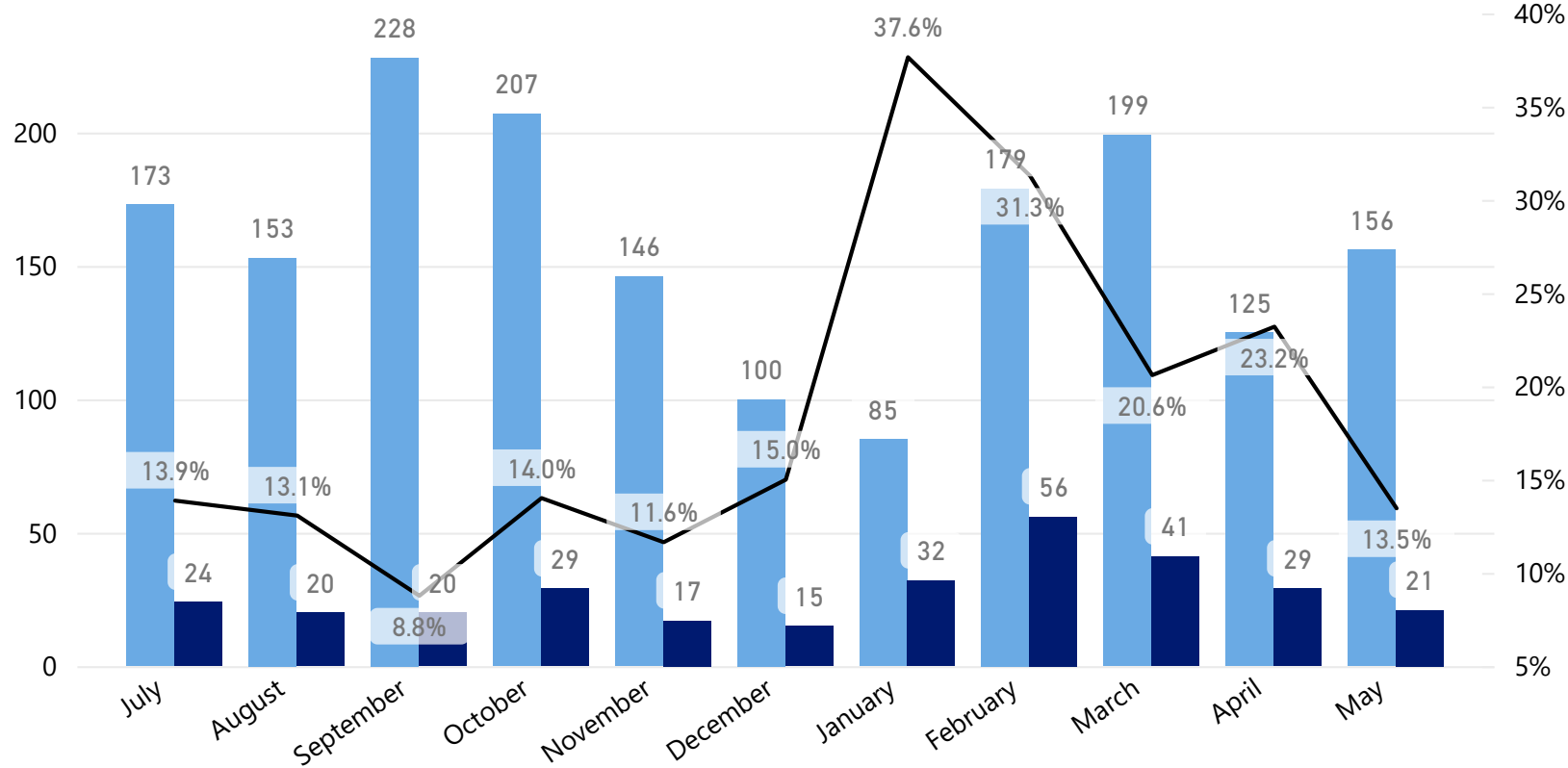
304  
Closed - Technical Only

17.4%  
Tech. Violation Rate

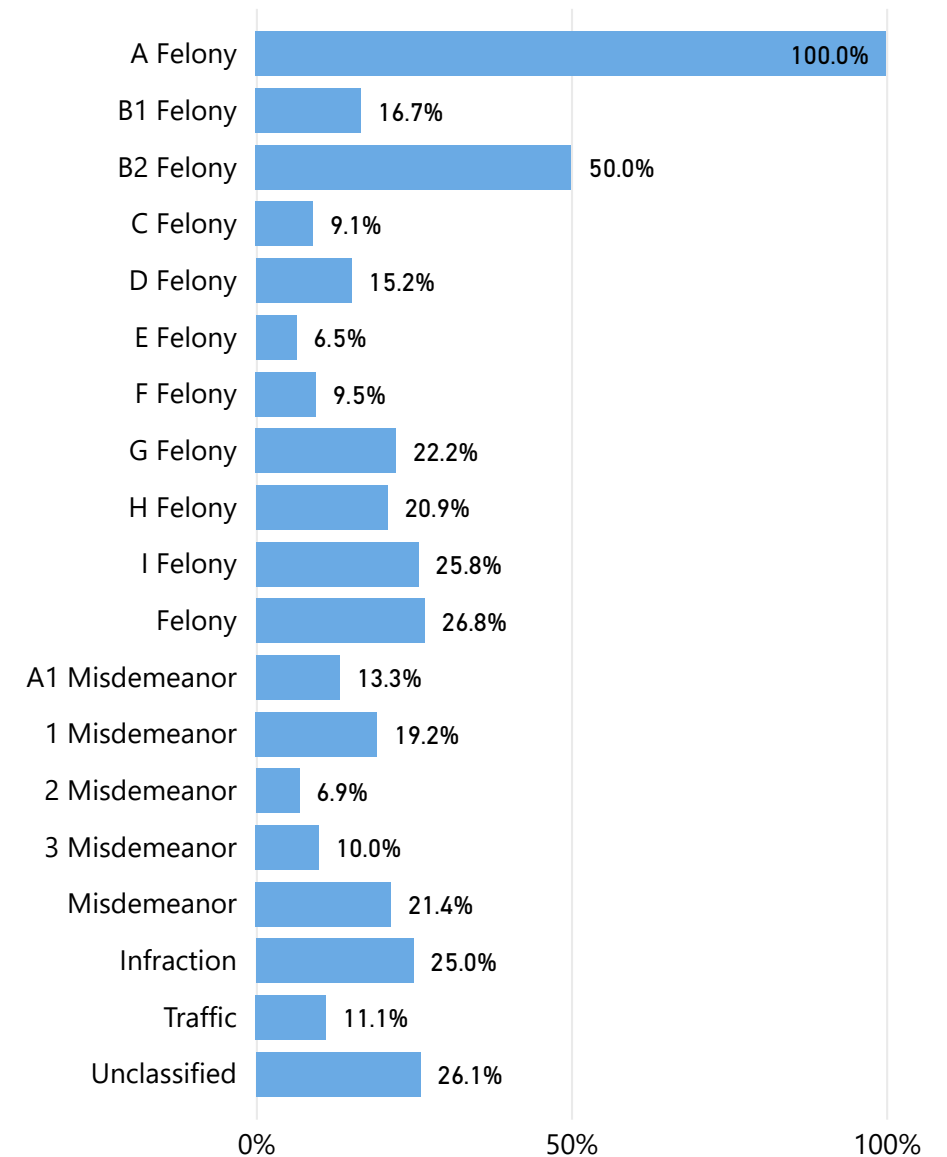
When a supervision is closed, it is flagged as successful or unsuccessful. Unsuccessful supervisions are closed due to the following reasons: a new charge occurs, an individual fails to appear in court, an individual violates release conditions (technical violation), or some combination thereof. A closed supervision that is unsuccessful is counted as a technical violation if "technical violation" is the only disposition reason identified on the supervision.

## Technical Violations by Month

● Closed Supervisions ● Closed Due To Technical Only ● Technical Violation Rate



## Technical Violation Rate by Top Charge Offense Level





# Fiscal Year 2021 Public Safety Rate

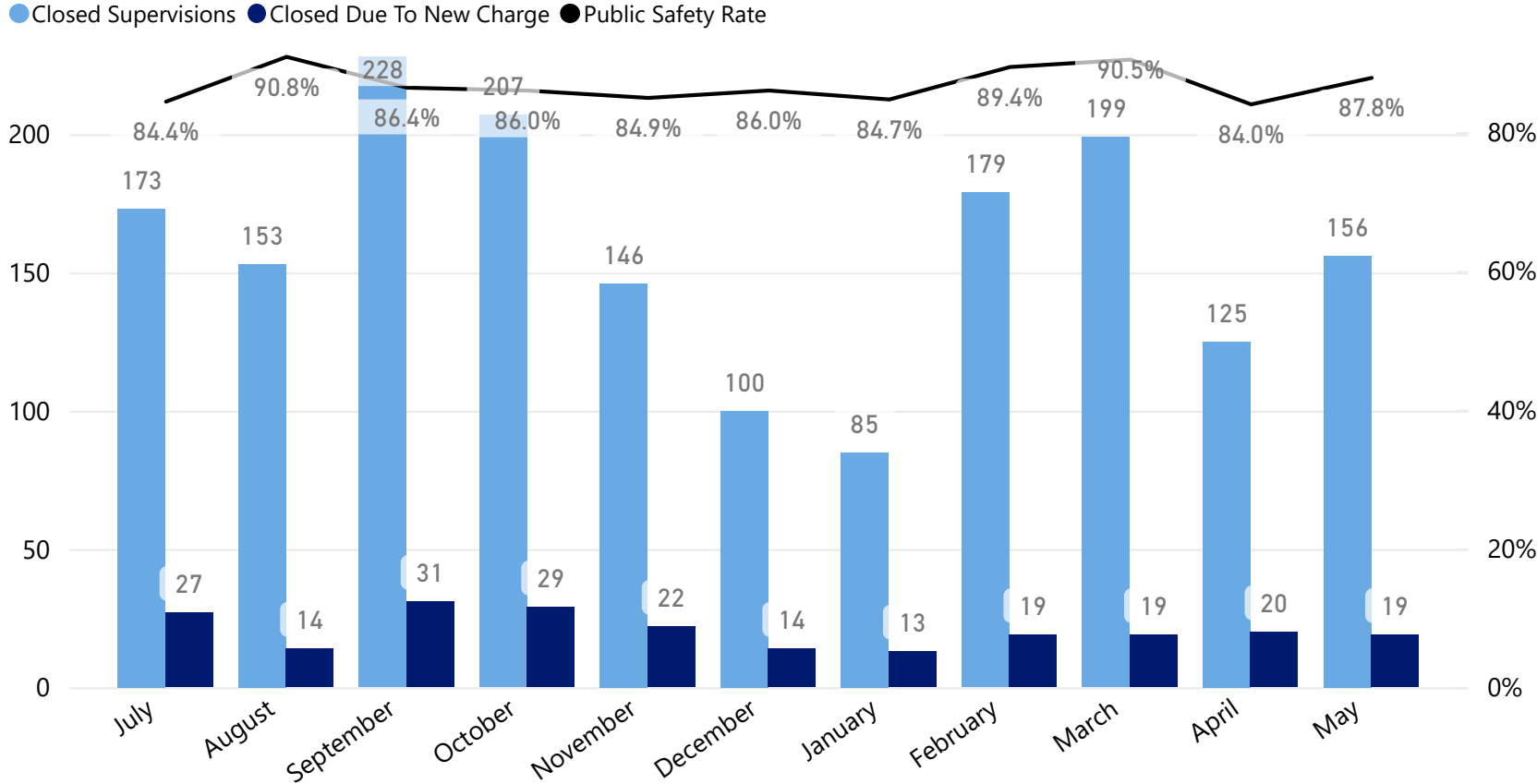
1,750  
Closed Supervisions

227  
Closed - New Charge

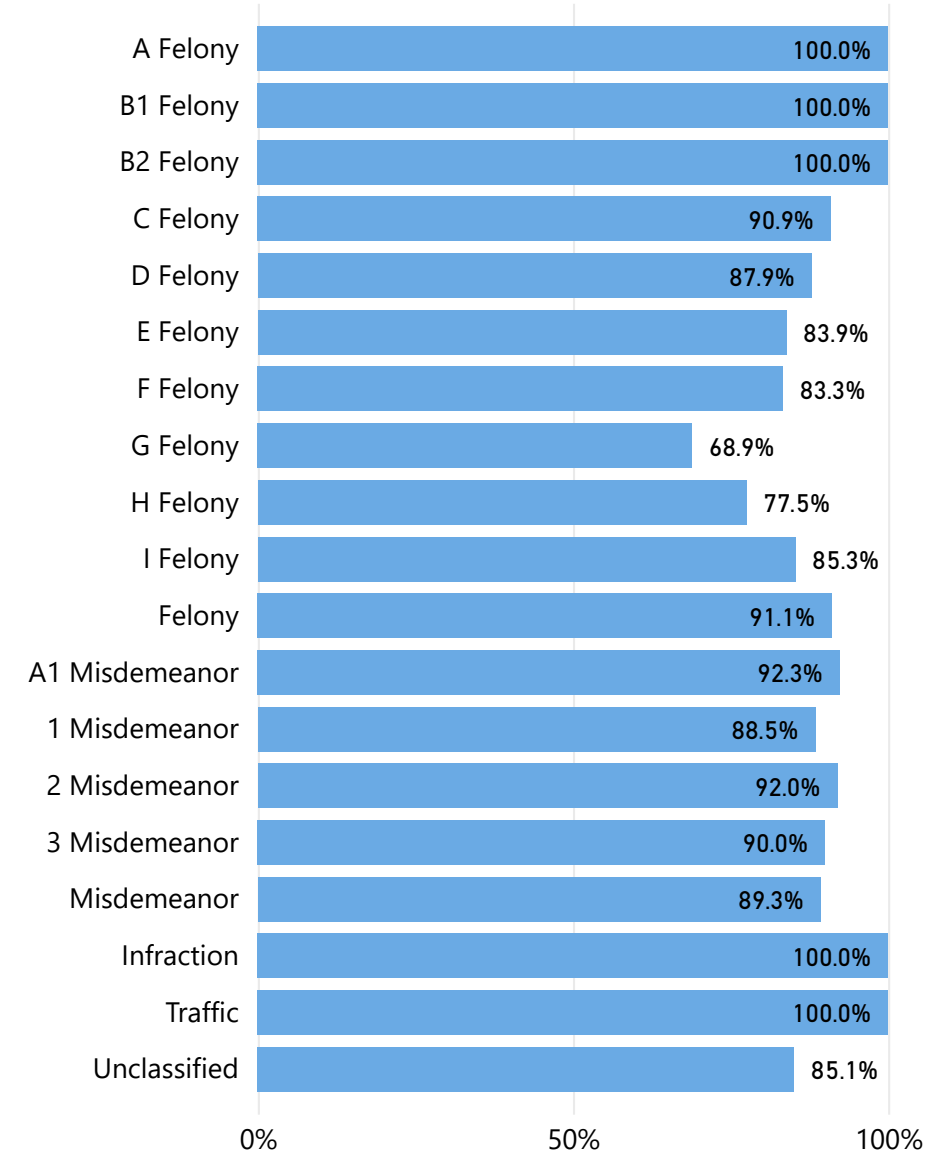
87.0%  
Public Safety Rate

When a supervision is closed, it is flagged as successful or unsuccessful. Unsuccessful supervisions are closed due to the following reasons: a new charge occurs, an individual fails to appear in court, an individual violates release conditions (technical violation), or some combination thereof. A closed supervision that is unsuccessful is closed due to new charge if "new charge" is one of the disposition reasons identified on the supervision.

## New Charges by Month



## Public Safety Rate by Top Charge Offense Level



# Fiscal Year 2021 Appearance Rate

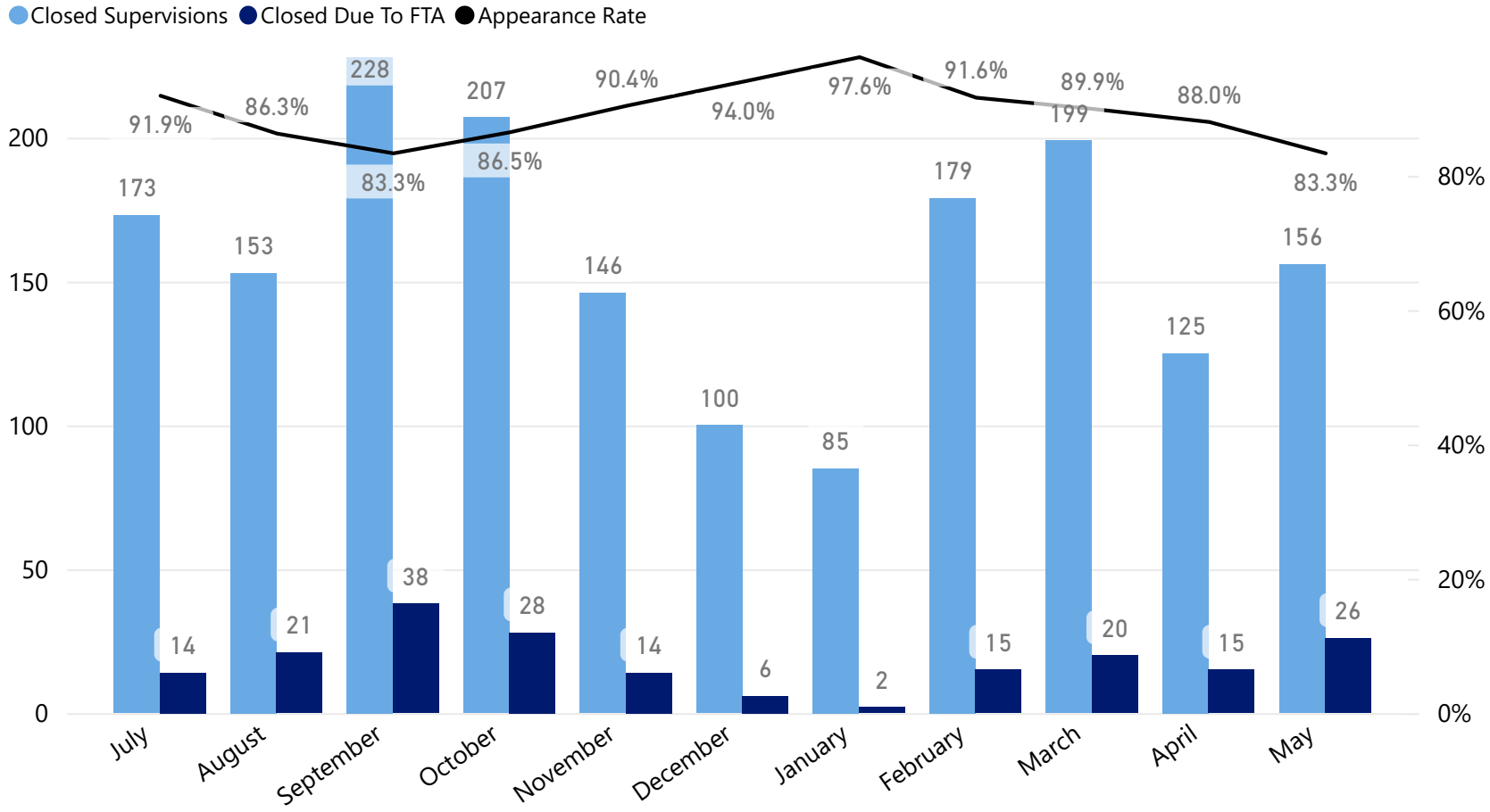
1,750  
Closed Supervisions

199  
Closed Due To FTA

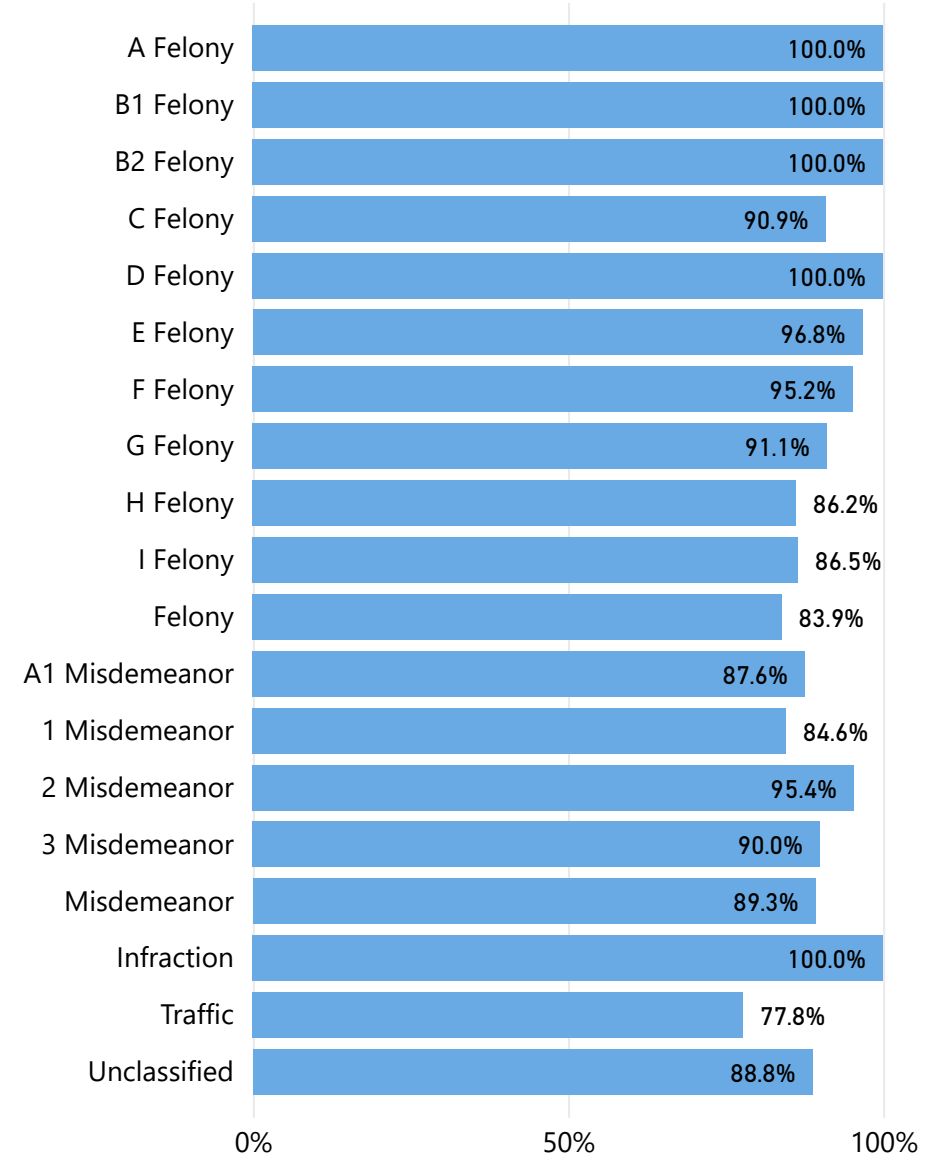
88.6%  
Appearance Rate

When a supervision is closed, it is flagged as successful or unsuccessful. Unsuccessful supervisions are closed due to the following reasons: a new charge occurs, an individual fails to appear in court, an individual violates release conditions (technical violation), or some combination thereof. A closed supervision that is unsuccessful is closed due to FTA if "FTA" is one of the disposition reasons identified on the supervision.

## FTAs by Month



## Appearance Rate by Top Charge Offense Level



# Fiscal Year 2021 Supervisions Opened

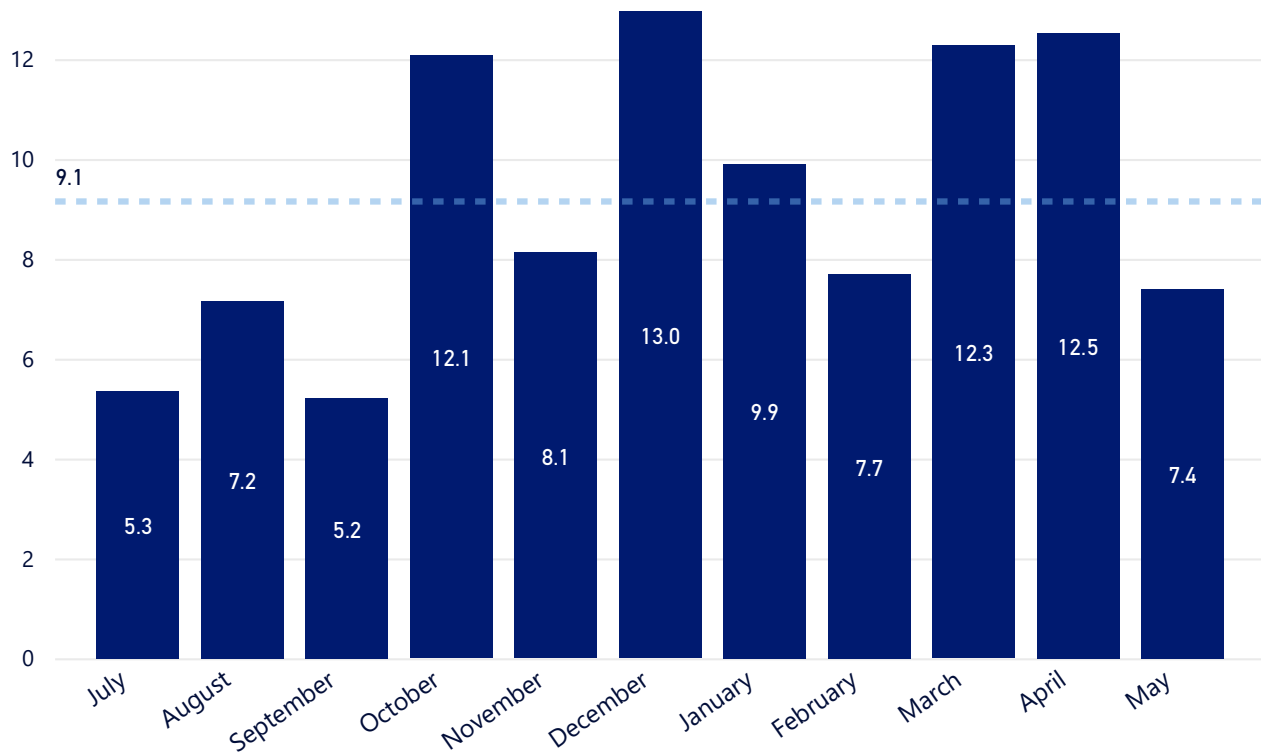
**122,081**

Total Estimated Bed Days Saved

**364**

Estimated Beds Saved per Day

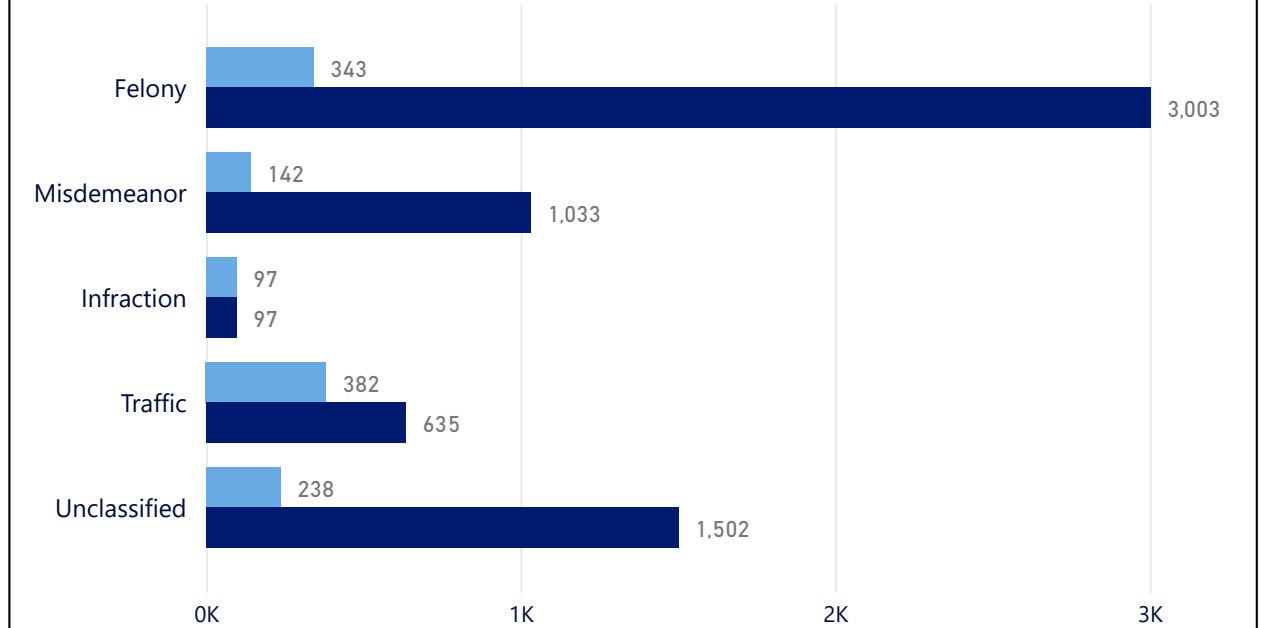
## Average Days Between Booking and Referral by Month



# 968 Supervisions Currently Opened

## Days On Supervision by Top Charge Type - In Community

● Average Days On Supervision ● Maximum Days On Supervision



## Days On Supervision - In Custody

● Average Days On Supervision ● Maximum Days On Supervision

