

# **Buncombe County CHIP Partners in Community Health 2017 Annual Review**



**Evan Richardson, MAHEC – Director of Patient Safety & QI**

**Zo Mpofu, Buncombe County HHS – CHA/CHIP Coordinator**

# MEET THE BUNCOMBE COUNTY CHIP TEAM

## CHIP LEADERSHIP BOARD



**Jan Shepard, Buncombe County**  
*Public Health Director*



**Zo Mpofu, Buncombe County**  
*CHIP & CHA Coordinator*



**Sonya Greck, Mission Health**  
*Senior VP Patient Safety Net & BH*



**Frank Castelblanco, MAHEC**  
*Director of Regional Services*



**Evan Richardson, MAHEC**  
*Director of Patient Safety*

## TECHNICAL ASSISTANCE & CONSULTING



**Terri Z. March, MAHEC**  
*Health Improvement Specialist*



**Deanna LaMotte, MAHEC**  
*Health Improvement Specialist*



**Rachel Long, Independent**  
*CHIP Consulting Epidemiologist*



**BUNCOMBE COUNTY**  
HEALTH & HUMAN SERVICES

# Buncombe County Community Health Programs

Community Health Improvement Process (CHIP):

## 2017 Year in Review

*Buncombe County HHS and MAHEC  
working together to leverage the power of strategic  
partnerships, community informed aspirations and  
evidence-based intervention.*



# Buncombe County Community Health Programs 2017 Year in Review : SPRING



- **Mia Bird Song Hosts a Community Conversation at Dianna Wortham Theaters**

### **3 Questions:**

- How were you brave?
- How did you Fail?
- How Did you show Love?

### **Results Based Accountability - 3 questions :**

- To how were you brave – we ask: how much did you do
- To How did you fail –we ask: Is anyone better off
- To How did you show love – we ask: Is anyone better off?



# BUNCOMBE COUNTY COMMUNITY HEALTH PROGRAMS 2017 YEAR IN REVIEW: SUMMER 2017

**BIG  
IVY DAY**



**PROJECT  
CONNECT**



**(TIP) TRAUMA  
INTERVENTION PROGRAM**



**ABIPA  
PRAISE AWARDS**



**BUNCOMBE COUNTY**  
HEALTH & HUMAN SERVICES

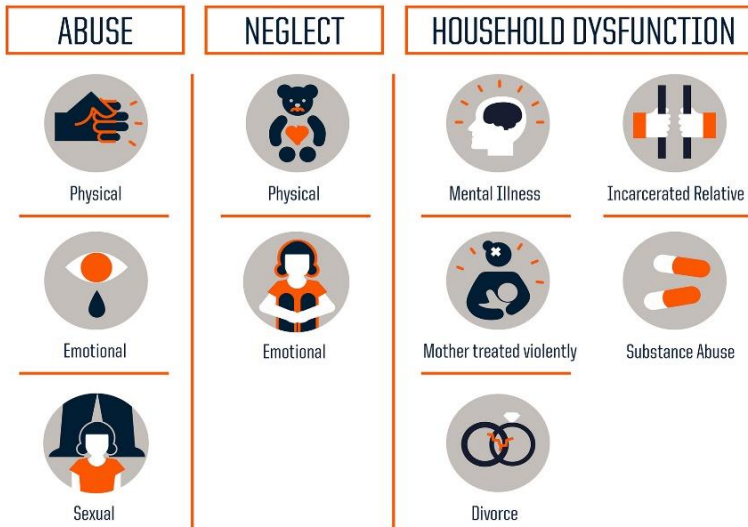


# Buncombe County Community Health Programs 2017 Year in Review: Autumn

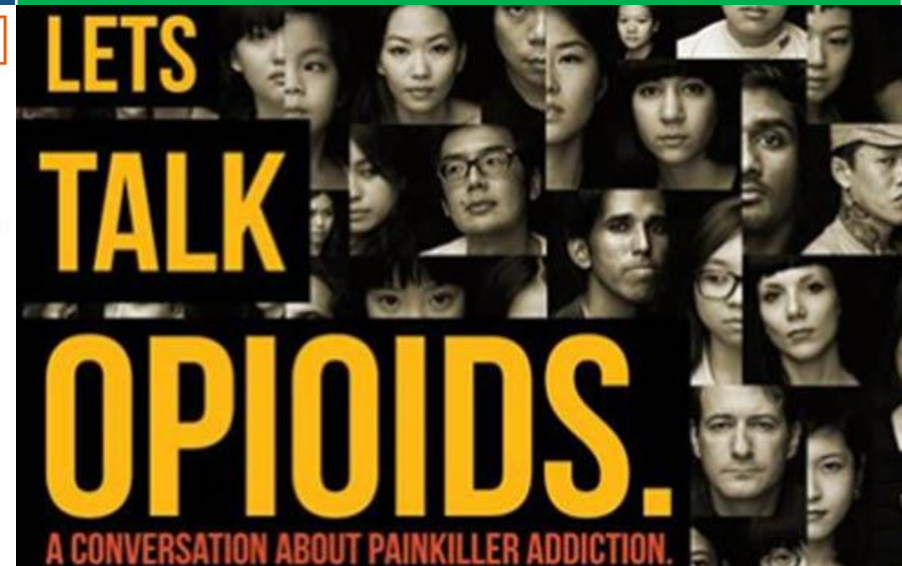
FAITH LEADERS  
FORUM ON OPIOIDS



SOUTHEASTERN  
ACES SUMMIT



BUNCOMBE COUNTY  
OPIOID TOWN HALLS



**BUNCOMBE COUNTY**  
HEALTH & HUMAN SERVICES

# 2018 County Health Ranking: Buncombe County

by WLOS staff | Wednesday, March 14th 2018



A national study released Wednesday shows Buncombe County is on track to become one of the healthiest communities in the state. (Photo credit: WLOS staff)

[WLOS VIDEO LINK](#)

**National Rankings Show Buncombe County is on Track to Become Healthiest Community in the North Carolina**  
*Addressing social factors, health disparities are critical for improving community health*

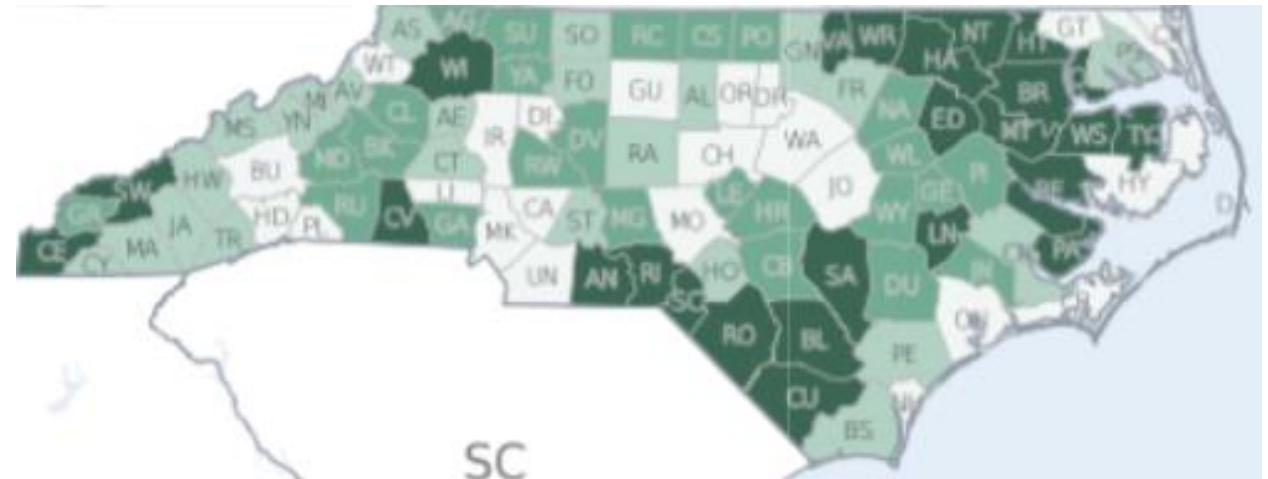


**BUNCOMBE COUNTY**  
HEALTH & HUMAN SERVICES

# 2018 County Health Ranking: Buncombe County Key Findings of 2018

**OVERALL HEALTH  
OUTCOMES:  
#14**

**Buncombe ranks #14** among NC counties for overall Health Outcomes, which includes premature death rates as well as the number of days residents reported experiencing poor health.





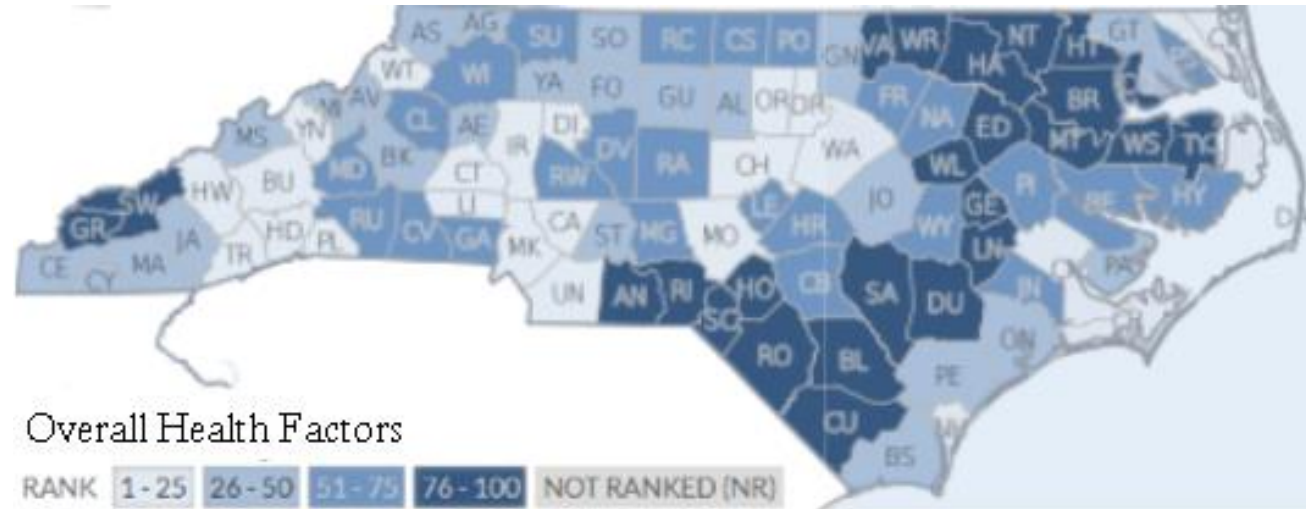
# 2018 County Health Ranking: Buncombe County

## Key Findings of 2018

OVERALL HEALTH  
FACTORS:

**#3**

Buncombe ranks #3 out of 100 NC  
Counties for Overall Health Factors



# 2018 County Health Ranking: Buncombe County Key Findings of 2018

## OVERALL HEALTH FACTORS:

### PHYSICAL ENVIRONMENT

We ranked #49 for physical environment, a 20 point jump from 69 in 2016.

### AIR QUALITY

Air quality improved slightly to 8.1% (this is a measure of particulate matter).



# 2018 County Health Ranking: Key Findings of 2018

## OPPORTUNITIES FOR IMPROVEMENT

### Children in Poverty:

- 1 in 4 children in our community live in poverty.

### Premature Deaths:

- The county health rankings show an increase from 13 drug-related deaths per 100,000 residents to 14.

### Sexually Transmitted Infections:

- 33% increase in STD infection rates over the past year.



# 2018 County Health Ranking: Buncombe County Key Findings of 2018

## SOCIAL & ECONOMIC FACTORS

We improved to # 8  
(previous year #11)

- Isaac Coleman Grants
- Community Connectors STEP Program
- Project CARA





# 2017 State of the County Health Report (SOTCH)

## Our Priorities Focus:

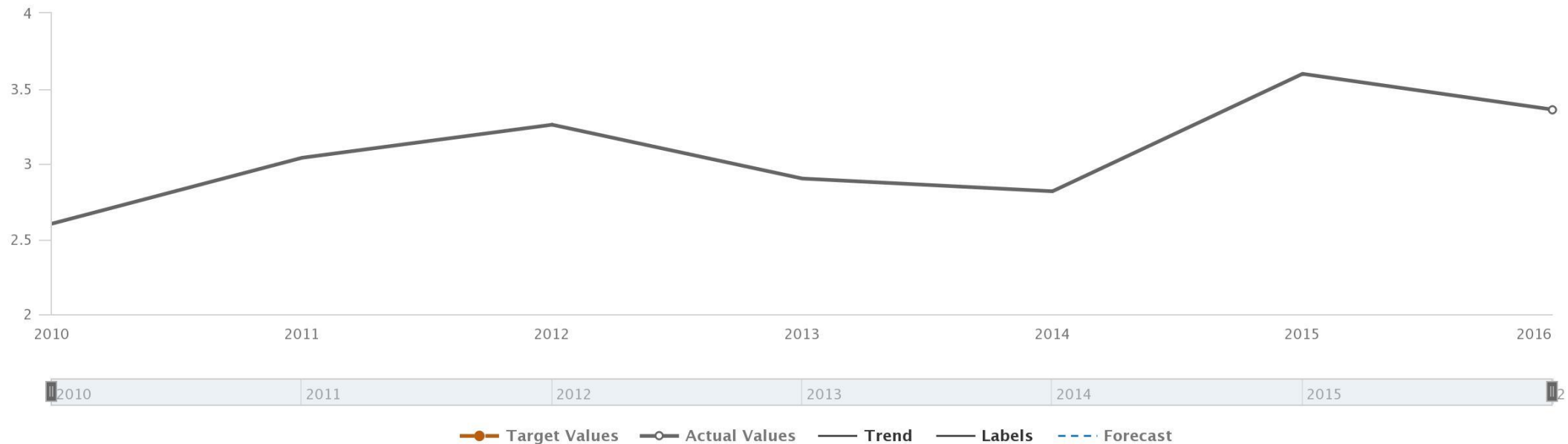
- **Reducing Chronic Disease** – Focus on Obesity & Diabetes
- **Infant Mortality** – Addressing the Racial Disparity in Outcomes
- **Intimate Partner Violence** – Focus on Prevention



# Diabetes: Addressing Mortality Disparity

## What the Data Tells us: 3.4% Racial Disparity Rate

Diabetes Mortality Disparity Ratio between African American adults and White adults in Buncombe



ClearImpact.com



# Diabetes: Addressing Mortality Disparity Our Partners

- Appalachian Sustainable Agriculture Project
- Asheville Buncombe Institute of Parity Achievement
- Asheville Housing Authority
- Asheville Buncombe Food Policy Council
- Bountiful Cities
- Bounty & Soul Buncombe County HHS Community Service Connectors
- WIC
- Children First/Communities in Schools of Buncombe County
- Cooperative Extension
- Council on Aging
- Eschelmen School of Pharmacy (UNCA)
- Family Resource Center at Emma
- FEAST
- Asheville Gardens that Give WNC
- Land of Sky Regional Council,
- MAHEC
- MANNA FoodBank
- Mission Health
- UNC Asheville – NC Center for Health and Wellness
- YES!,
- YMCA of WNC,
- YWCA of Asheville.



# Diabetes: Action Plans & Interventions

1. **Results-Based Accountability (RBA) Approach To Collaborative Action Planning Process**
2. **National Diabetes Prevention Program (DPP) – The YMCA of WNC implements the NDPP in Buncombe County as well as Taking Control of Diabetes**





# Diabetes

## Progress Made on Existing Initiatives

- **Single Entry-Point Under Development For Community Members Seeking Support In Preventing Or Managing Diabetes**
- **Buncombe County Community Engagement “Pop-up Markets” - Community Capacity Building**



# Diabetes: Progress Made in 2017: New Programs and Emerging Initiatives

- **Faithful Families Partnership with ABIPA and YMCA of Western North Carolina**
  - Tried Stone Baptist Church
  - Bethel Seventh Day Adventist
  -
- **Shiloh Community Photo Voice Project – Living with Diabetes**
  - In Partnership with ABIPA and Mission Health ACT Diabetes Prevention Grant

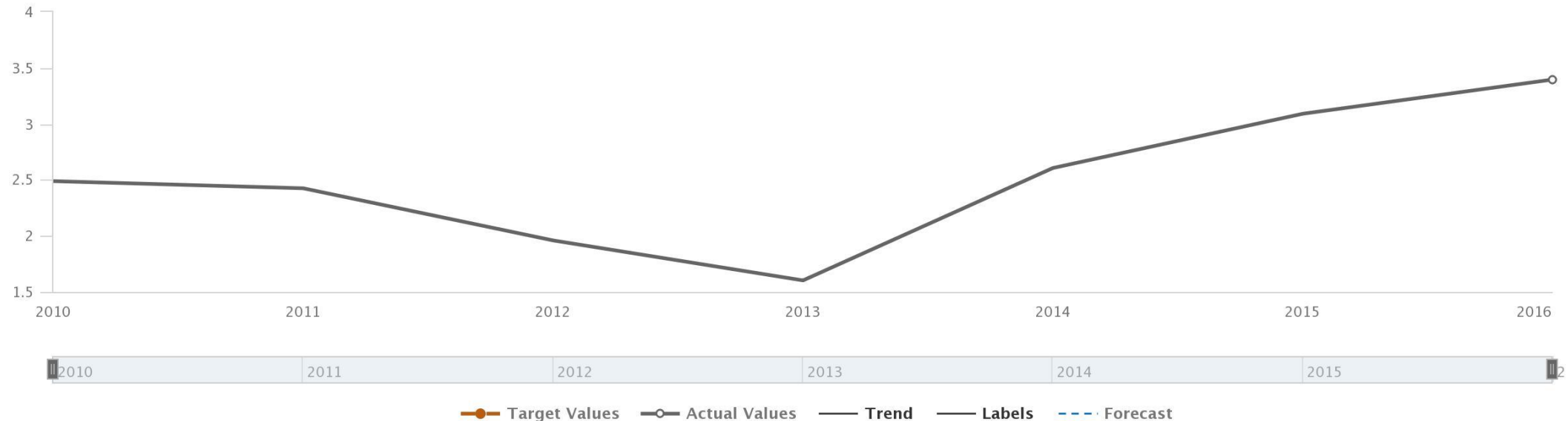


# Infant Mortality: Addressing Disparity

## What the Data Tells us: 3.4% Racial Disparity Ratio

Infant Mortality Disparity Ratio of African American to White Infants - Buncombe

Data Source: NC SCHS, Vital Statistics



ClearImpact.com



**BUNCOMBE COUNTY**  
HEALTH & HUMAN SERVICES

# Infant Mortality: Addressing Mortality Disparity

- Community agencies partnering to address this issue include:
- Asheville Buncombe Institute for Parity Achievement
- Appalachian Mountain Community Health Centers
- Child Protection/Fatality Prevention Team
- Buncombe County HHS – Family Planning and STD Clinics
- Nurse Family Partnership
- WIC
- Community Service Connectors
- Buncombe County Safety Net
- Children First/Communities in Schools of Buncombe County
- Community Care of Western North Carolina
- Mission Health
- Mountain Area Health Education Center
- MAHEC- Community Centered Health Home
- Mt. Zion Community Development - Project NAF
- Pisgah Legal Services
- YWCA of Asheville.





# Infant Mortality: Action Plans & Interventions

1. Results-Based Accountability (RBA)  
Approach To Collaborative Action  
Planning Process

2. Action Plan Intervention 2:  
MotherLove Program



# Infant Mortality

## Progress Made on Existing Initiatives

- Promoting Safe Sleep Campaign:
- Community Centered Health Home initiative(CCHH)
  - Peer Group: Mother to Mother
  - Tobacco Cessation Specialists
  - Sistas Caring 4 Sistas



# Infant Mortality: Progress made during 2017 in Buncombe County:

- Home Visitors Collaborative
- Access to Legal Services
- Health Equity and ACEs Informed





# Intimate Partner Violence: Prevention

## Work around intimate partner violence in Buncombe County focused on

- Expanding public awareness of the services provided at the FJC
- Data and Screening at the clinical level
- Major capital investments towards prevention



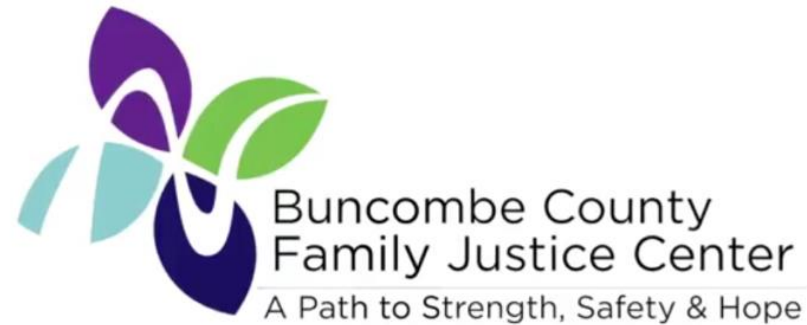
# Intimate Partner Violence : Our Partners :

- Asheville Police Department
- Asheville Parks and Recreation
- Buncombe County District Attorney's Office
- Buncombe County Health and Human Services – Family Justice Center
- Buncombe County Sherriff's Department
- Helpmate
- Mission Health
- Mountain Area Health Education Center
- OurVoice
- Pisgah Legal Services
- SPARC Network
- SPARC Foundation
- , Mission Health
- Mountain Child Advocacy Center
- Triple P of Buncombe and Madison
- UNC-Asheville
- WNC Community Health Center
- YWCA of Asheville





# Intimate Partner Violence: Progress Made on Existing Initiatives



***Buncombe County Health & Human Services and community partners increased utilization of Family Justice Center (opened fall 2016)***



# Intimate Partner Violence: New & Emerging Programs/Initiatives

- A public awareness campaign, called Still Standing
- 8 Primary care clinics now screening for IPV:
- Community Attitudes toward Violence Survey

*still standing* PROJECT  
BREAK THE SILENCE!



# Intimate Partner Violence: New & Emerging Programs/Initiatives

- Helpmate, with funding from a grant from Mission Community Investments, increased its prevention education with youth tenfold (from 403 reached last year to over 4,000 in 2017).

4,000+

Students Reached

