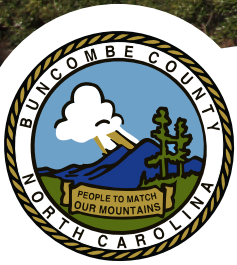


2014

**POPULAR ANNUAL
FINANCIAL REPORT**
FOR THE FISCAL YEAR ENDING JUNE 30, 2014



BUNCOMBE COUNTY
NORTH CAROLINA



POPULAR ANNUAL FINANCIAL REPORT CONTENTS

2014

- 1 *Board of Commissioners*
- 2 *Managers Message*
- 3 *About Buncombe*
- 4 *Vibrant Economy*
- 5 *Economic Summary*
- 6 *General Fund*
- 7 *Revenue & Expenditures*
- 8 *Property Taxes*
- 9 *Government-Wide Statements*
- 10 *Outstanding Debt*
- 11 *Operating Information*
- 12-13 *Capital Improvement Plan*
- 14 *General Government*
- 15 *Public Safety*
- 16 *Human Services*
- 17 *Economic & Physical Development*
- 18 *Culture & Recreation*
- 19 *PAFR Award*
- 20 *Directory*



BOARD OF COMMISSIONERS

CHAIRMAN



DAVID GANTT
252-2852
david@davidgantt.com
82 Church Street
Asheville, NC 28801

DISTRICT 1



HOLLY JONES
250-4004
holly.jones@buncombecounty.org
200 College Street Suite 316
Asheville, NC 28801

DISTRICT 2



MIKE FRYAR
250-4007
mike.fryar@buncombecounty.org
200 College Street Suite 316
Asheville, NC 28801

DISTRICT 3



JOE BELCHER
250-4008
joe.belcher@buncombecounty.org
200 College Street Suite 316
Asheville, NC 28801

DISTRICT 1



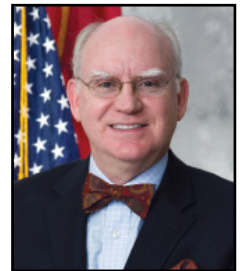
BROWNIENEWMAN
250-4011
(brownie.newman@
buncombecounty.org)
200 College Street Suite 316
Asheville, NC 28801

DISTRICT 2



ELLEN FROST
250-4005
ellen.frost@buncombecounty.org
200 College Street Suite 316
Asheville, NC 28801

DISTRICT 3

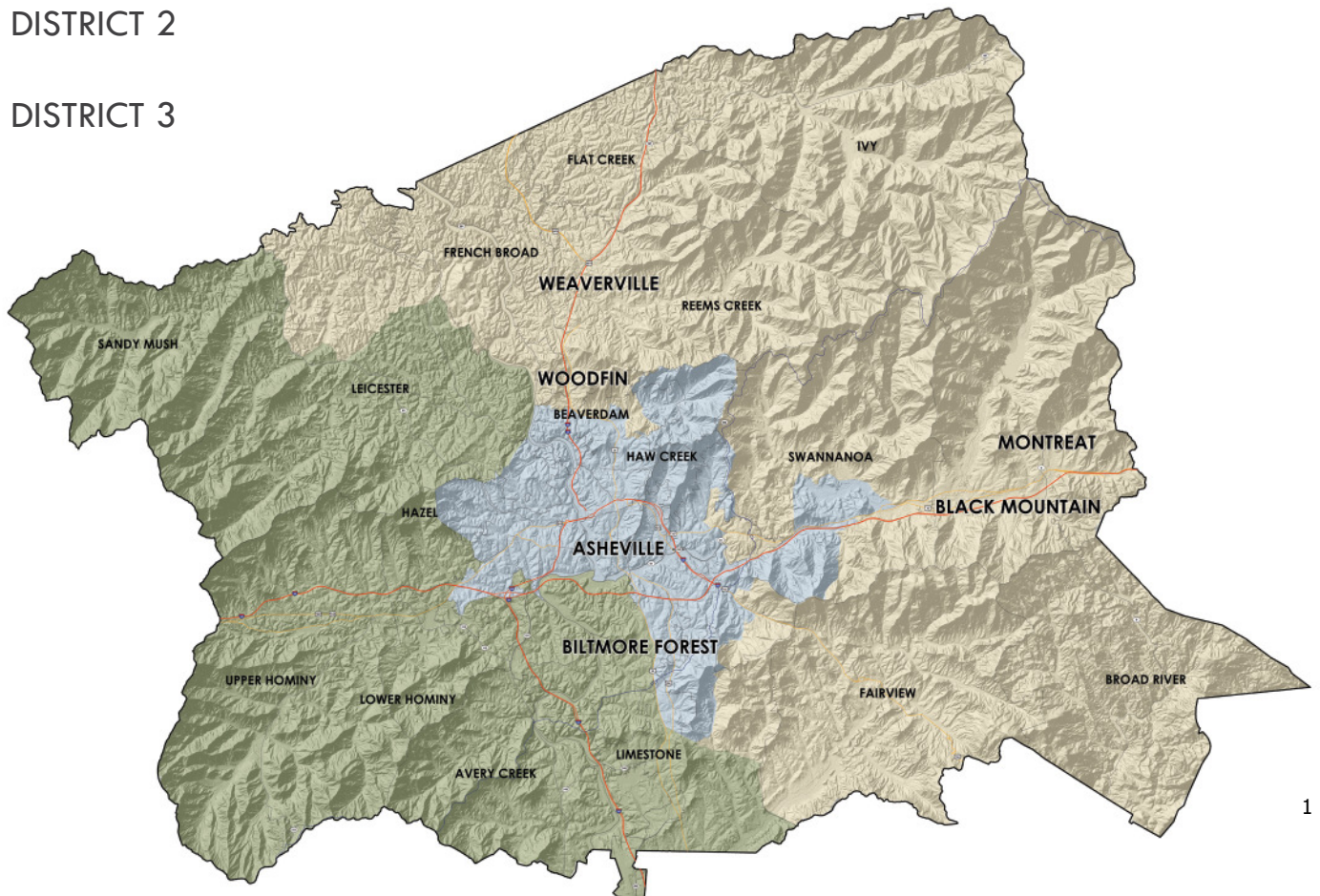


DAVID KING
250-4010
david.king@buncombecounty.org
200 College Street Suite 316
Asheville, NC 28801

 DISTRICT 1

 DISTRICT 2

 DISTRICT 3



MANAGERS MESSAGE

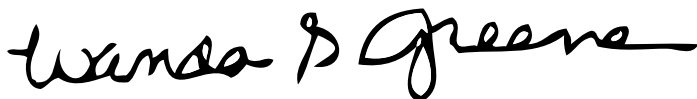
Dear Buncombe County Residents,

We are pleased to present the Buncombe County Popular Annual Financial Report (PAFR) for the fiscal year ending June, 30 2014. Analyzing financial statements can be challenging, especially for those who do not do so on a regular basis. The PAFR is designed to address that issue by providing a summary of the County's financial position in a user friendly format. The PAFR also represents the ongoing commitment of Buncombe County officials to keep citizens informed about County finances and to be accountable for the receipt and use of public funds.

The PAFR summarizes and simplifies the information contained in the Buncombe County Comprehensive Annual Financial Report (CAFR). We encourage you to read the CAFR, which is prepared in accordance with Generally Accepted Accounting Principles (GAAP) and is audited by an independent Certified Public Accounting firm. The CAFR contains more detailed and extensive information, such as the audited financial statements, notes, schedules and other relevant information. The CAFR is available online at <http://www.buncombecounty.org/Governing/Depts/Administration/Finance/FinancialReports.aspx>. If you have questions concerning the financial reports or would like additional information, you may send an email to Financeinfo@buncombecounty.org or call the Finance Department at 828.250.4130

The PAFR is intended to be a supplement to the CAFR, not a replacement. The information contained in the PAFR is unaudited and focuses more on the primary governmental activities. It is designed to be a user-friendly report on Buncombe County's overall financial position.

We hope that you find the PAFR to be informative and understandable. As you review the PAFR, please share any questions, concerns or recommendations that you may have with us. We value your input and look forward to addressing any comments you may have.



WANDA **GREENE** PhD, CPA





ABOUT **BUNCOMBE**

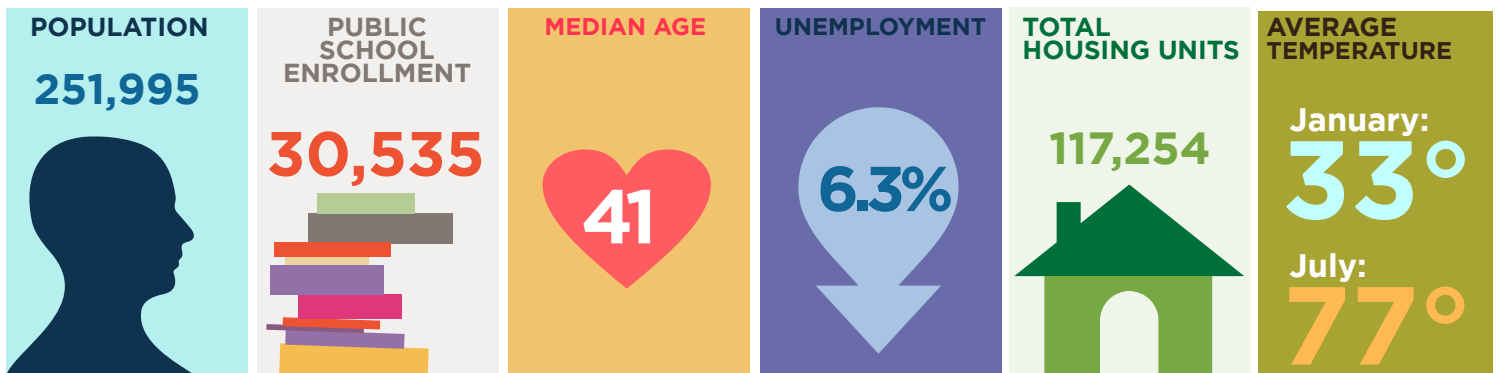
Buncombe County was established in 1791 and is located in the southwestern portion of North Carolina. It has a total land and water area of 660 square miles. There are six incorporated municipalities located within Buncombe County.

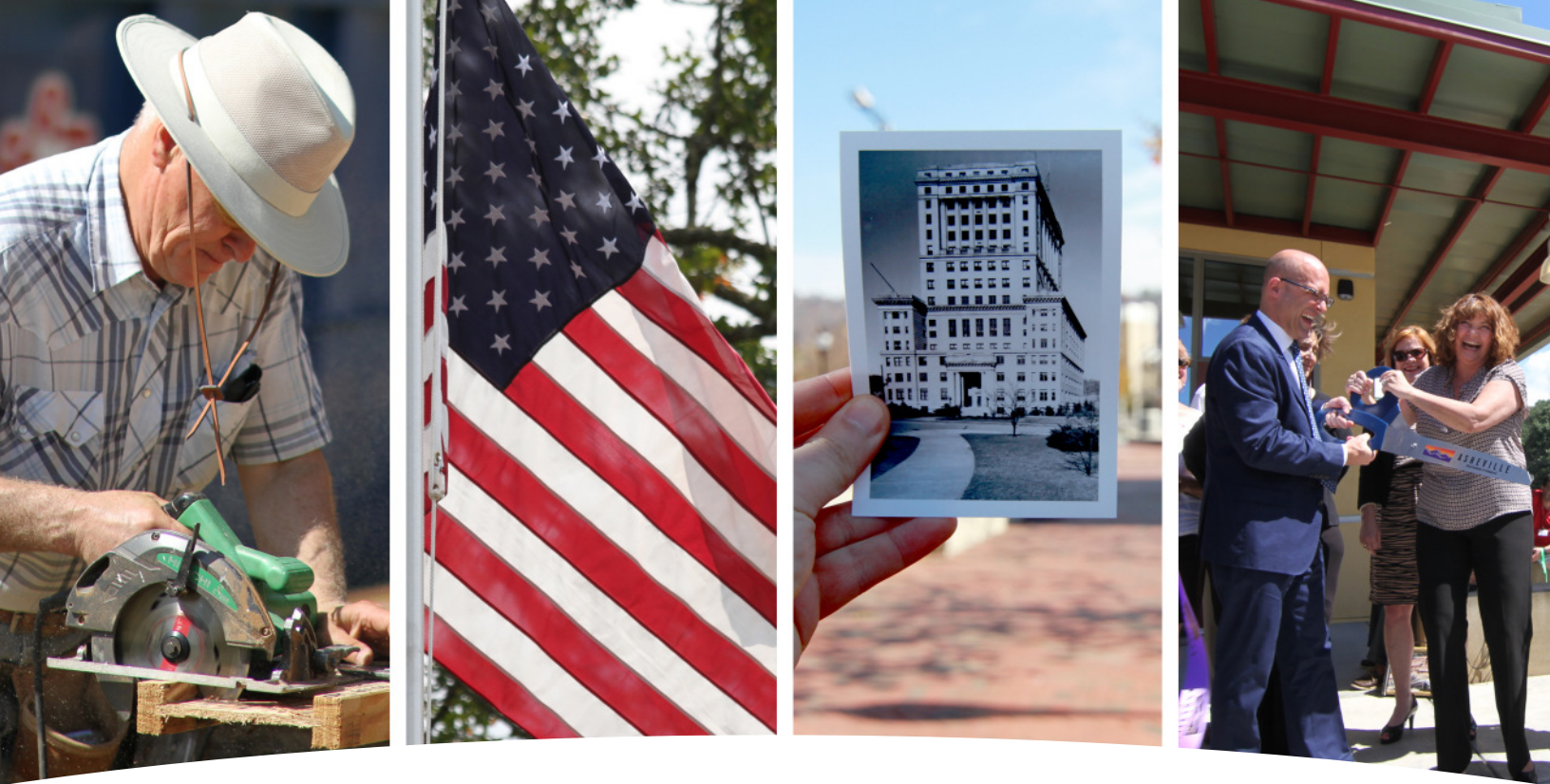
Buncombe County Government provides citizens with a wide range of services including human services, public safety, economic and physical development, environmental protection, culture and recreation, and others.

Buncombe County has multiple departments that are working daily to exceed the expectations of the citizens. The following pages offer a small sample of what Buncombe County government has accomplished in fiscal year 2014.

MUNICIPALITIES

- City of **Asheville**
- Town of **Black Mountain**
- Town of **Woodfin**
- Town of **Weaverville**
- Town of **Biltmore Forest**
- Town of **Montreat**





VIBRANT **ECONOMY**

Buncombe County's diverse and vibrant economy

TOURISM

- *Biltmore Estate*
- *Blue Ridge Parkway*
- *Great Smoky Mountains National Park*
- *Grove Park Inn*
- *Southern Conference Basketball Tournament*
- *Thomas Wolfe Visitor Center*
- *US Cellular Center*
- *Walking and BusTours*

OUTDOORS

- *Biking*
- *Golf*
- *Hiking*
- *Horseback Riding*
- *River Sports*
- *Scenic Drives*
- *Zipline Canopy Tours*

MUSIC & ARTS

- *Revitalization of River Arts District*
- *The Orange Peel*
- *Folk Music & Storytelling*
- *Folk Art Center*
- *Film Industry*
- *Colburn Earth Science Museum*
- *Hometown of 2014 American Idol Winner*
- *Around 200 artists in residence*

FOOD & BEVERAGE

- *East coast expansion of New Belgium*
- *Asheville's Foodtopia(R)*
- *Farm Tours*
- *Tailgate Markets*
- *WNC Farmer's Market*
- *Highland Brewing*
- *Multiple other craft breweries*



ECONOMIC SUMMARY

Buncombe County is the most populous county in the region and serves as the economic center of Western North Carolina. The diverse commercial and industrial base includes industries such as healthcare, technology, manufacturing, and tourism.

ECONOMIC HIGHLIGHTS FOR FISCAL YEAR 2014

- *22,859 local jobs in the healthcare and social assistance industry*
- *Several technology companies are based in Buncombe County including:*
 - *BUILDERadius*
 - *AvL Technologies*
 - *Curious Sense*
 - *Plasticard-Locktech International*
 - *National Oceanic & Atmospheric Administration & National Climatic Data Center.*
- *Manufacturing jobs account for 11 percent of area employment.*
- *Unemployment rate of 6.3 percent - among the lowest in North Carolina*
- *Economic development investments in area companies projected to create over 250 jobs.*

GENERAL FUND

The General Fund is the County's primary operating fund. It accounts for all financial resources of the general government, except for those required to be accounted for in a different fund. The core services of Buncombe County are accounted for in the General Fund, in addition to other services.



FUND BALANCE QUICK FACTS FOR FISCAL YEAR 2014

Fund Balance is the difference between fund assets (what we own) and fund liabilities (what we owe). Generally Accepted Accounting Principles (GAAP) provide the hierarchy of constraints placed on how fund balance can be spent. Information on fund balance classifications can be found in the notes of the Comprehensive Annual Financial Report.

- *At the end of the fiscal year, available fund balance for the General Fund was \$50.6 million.*
- *The Board of Commissioners has determined that the County should maintain an available fund balance of 15 percent of general fund expenditures in case of unforeseen needs or opportunities, in addition to meeting cash flow needs of the County. The County has exceeded this requirement with an available fund balance of 18.2 percent.*
- *The County has been able to maintain its fund balance position during the economic fluctuations because of operational efficiencies and controlled spending.*

What kinds of services are accounted for in the General Fund?

GENERAL GOVERNMENT

- *Governing Body*
- *Human Resources*
- *Budget & Management*
- *Finance*
- *Tax Department*
- *Register of Deeds*
- *Board of Elections*
- *Information Technology*

PUBLIC SAFETY

- *Pre-Trial Release*
- *Sheriff Department*
- *Detention Facility*
- *Emergency Services*
- *Permits and Inspections*
- *General Services*

ECONOMIC DEVELOPMENT

- *Planning*
- *Cooperative Extension*
- *Soil Conservation*
- *Recycling*

HUMAN SERVICES

- *Public Health*
- *Social Services*
- *Veterans Services*

CULTURAL AND RECREATION

- *Libraries*
- *Recreation*

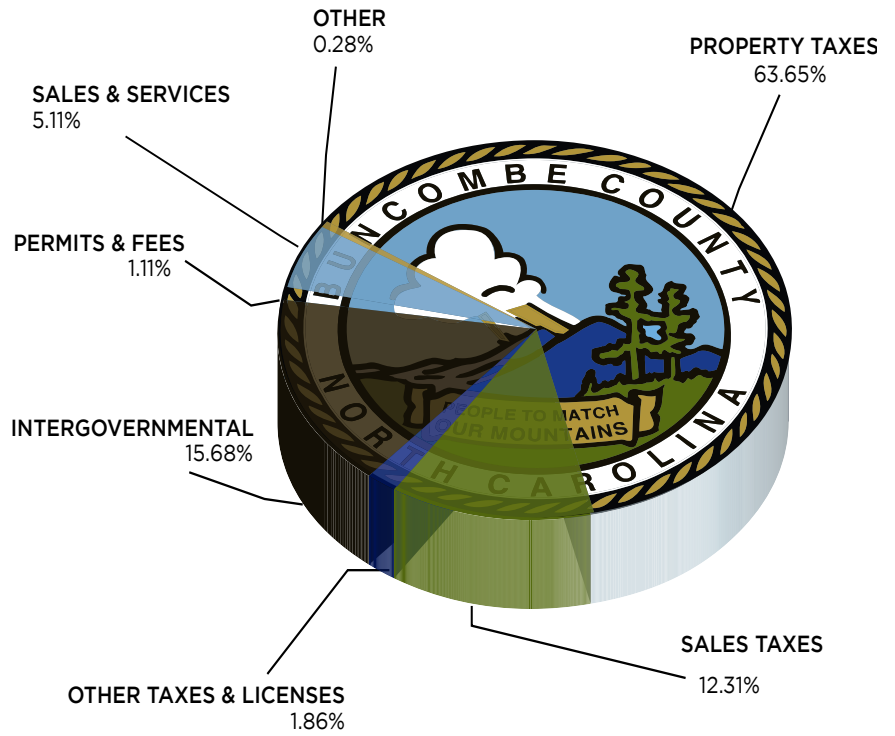
EDUCATION

- *Public Schools*

WHERE DOES THE FUNDING COME FROM?

REVENUES

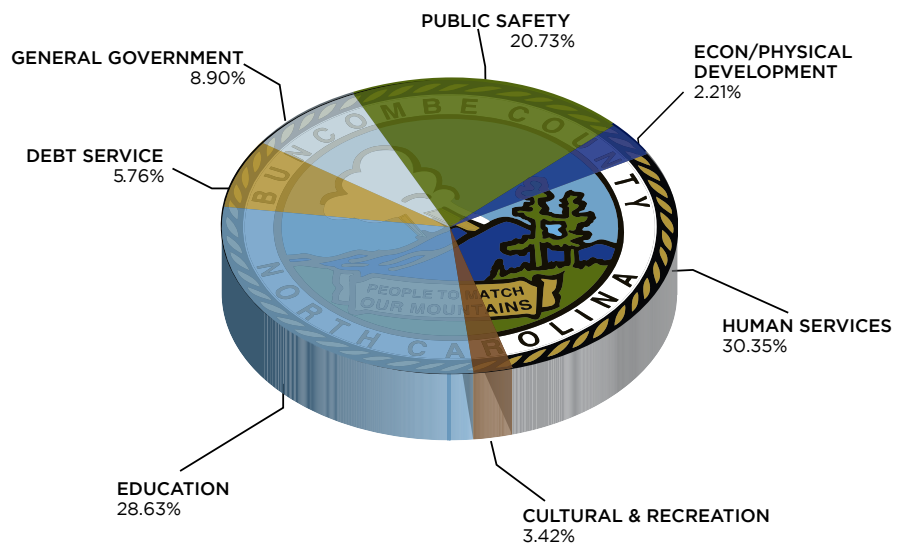
Property taxes make up the largest portion of incoming money for Buncombe County. Restricted intergovernmental, which is revenue received from other governments that must be used for a specific purpose, is the second largest revenue source. Sales tax, which is the tax Buncombe County receives from purchases of goods, is the third largest revenue source. Sales and services, which are fees that Buncombe County charges for certain services, is the fourth largest revenue source. The “other category” is made up of miscellaneous revenues, permits and fees, and investment earnings.



WHERE DOES THE GENERAL FUND MONEY GO?

EXPENDITURES

Human Services, which consists of Social and Health Services, makes up the largest portion of outgoing money for Buncombe County. Education makes up the second largest group of expenditures. Public Safety, which is made up of services such as law enforcement and emergency services, is the third largest group of expenditures. General Government, which includes departments such as the Tax Department, Information Technology, Board of Elections, etc., is the fourth largest group. Debt Service, which is paying back outstanding debt, is the fifth largest group. Cultural and Recreation ranks sixth in expenditures. Economic and Physical Development is the smallest percentage of expenditures.





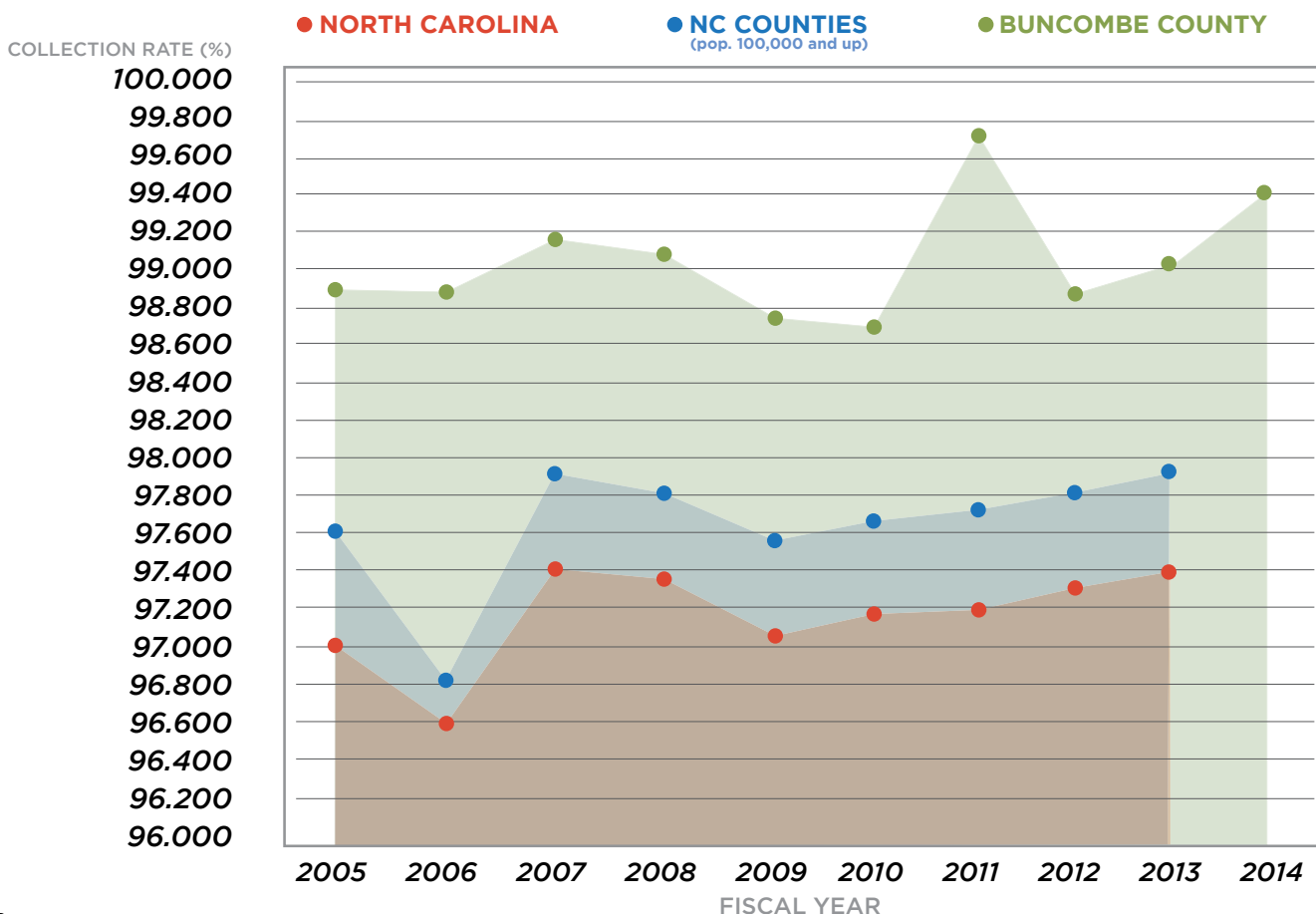
Top 10 Taxpayers:

- Progress Energy Carolinas
- Ingles Markets, Inc
- Town Square West LLC
- GPI Resort Holdings LLC
- Biltmore Company
- Asheville Mall CMBS LLC
- Borgwarner Turbo Systems
- Southeastern Container
- Bellsouth Telephone Co.
- Public Service Co of NC Inc.



PROPERTY TAXES

In order for Buncombe County to provide many types of services for our citizens, it needs to generate revenue. One of the main sources of revenue is the Ad Valorem (or property) tax. Property taxes make up 63.65% of the total General Fund revenues and are assessed and collected for things such as real estate, business and personal property assets, and motor vehicles. In order to fairly tax citizens, the County Tax Department reviews ownership and condition of the taxable property as of January 1st each year.



* 2014 information for the State of NC and for NC Counties with population of 100,000 and above has not yet been published.

GOVERNMENT-WIDE STATEMENTS

The government-wide statements look at Buncombe County as a single, integrated unit and use the full accrual basis of accounting. Exhibits 1 and 2 in the CAFR are government-wide statements and are separated by the governmental activities and the business-type activities.

The charts below focus only on the governmental activities. The business-type activities, which include services such as the Landfill, can be viewed in the Comprehensive Annual Financial Report. The Management's Discussion and Analysis in the Comprehensive Annual Financial Report also provides narrative information on changes in net position and activities.

NET POSITION (in millions)

	2014	2013
Current and Other Assets	\$310.8	\$180.1
Capital Assets	245.6	224.9
TOTAL ASSETS	556.4	405.0
DEFERRED OUTFLOWS OF RESOURCES	3.4	1.6
Long Term Liabilities	448.8	298.2
Other Liabilities	25.3	23.3
TOTAL LIABILITIES	474.1	321.5
DEFERRED INFLOWS OF RESOURCES	1.2	1.5
NET POSITION:		
Net Investment in Capital Assets	93.6	92.4
Restricted	194.7	78.2
Unrestricted	(203.8)	(87.0)
TOTAL NET POSITION	\$84.5	\$83.6

GOVERNMENTAL ACTIVITIES (in millions)

	2014	2013
REVENUES:		
<i>Program revenues</i>		
Charges for services	\$ 17.2	\$27.2
Operating grants/contributions	49.0	45.5
Capital grants/contributions	9.4	7.8
<i>General revenues</i>		
Property taxes	192.7	171.1
Other taxes	77.0	64.2
Other	0.8	1.4
TOTAL REVENUES	346.1	317.2
EXPENSES:		
General government	26.2	22.7
Public safety	86.3	81.6
Economic & physical development	15.3	18.8
Human services	86.3	80.4
Culture & recreation	10.6	8.6
Education	107.5	84.8
Interest on long-term debt	13.6	11.8
TOTAL EXPENSES	345.8	308.7

- **Exhibit 1 - Statement of Net Position** - Shows what the government has in relation to assets (what we own) and liabilities (what we owe)
- **Exhibit 2 - Statement of Activities** - Reflects the revenues (sources of income) and expenses (uses of money) that yield the annual change in net position.

Increase (decrease) in net position before transfers, contributions, & special items	0.3	8.5
Transfers, contributions, & special items	0.6	0.0
Increase (decrease) in net position	0.9	8.5
Net position beginning of year	83.6	75.1
NET POSITION END OF YEAR	\$84.5	\$83.6



OUTSTANDING DEBT

Buncombe County’s outstanding long-term debt increased by \$149 million during fiscal year 2014, due to financing required for education-related capital projects. As of June 30, 2014, Buncombe County’s total debt outstanding was \$438.7 million, of which \$144 million is for the public school system and \$84 million is for the community college. The Management’s Discussion & Analysis in the CAFR provides more in-depth narrative on the outstanding debt of Buncombe County.

Under North Carolina law, the County is responsible for providing capital funding for both education systems. Because the assets funded by Buncombe County are owned and utilized by the school systems, Buncombe County has incurred a liability (what we owe) without a corresponding increase in assets (what we own).

- **\$38.3 million**—*General Obligation Bonds, where the debt is backed by the full faith and credit of Buncombe County.*
- **\$1.5 million**—*Special Revenue Bonds, where revenues are pledged to the payment of and security for the bonds.*
- **\$398.9 million**—*Installment Notes, where the assets purchased or constructed are collateral for the notes.*

OUTSTANDING DEBT (in millions)

General Obligation Bonds
 Special Obligation Revenue Bonds
 Installment Notes Payable
 Product Development Financing Bonds

Total Debt

Governmental Activities		Business-Type Activities		Total Debt	
2014	2013	2014	2013	2014	2013
\$ 38.3	\$44.7	\$ 0.0	\$ 0.0	\$ 38.3	\$ 44.7
0.0	0.0	1.5	2.9	1.5	2.9
395.8	225.7	3.1	3.5	398.9	229.2
0.0	12.9	0.0	0.0	0.0	12.9
\$ 434.1	\$ 283.3	\$ 4.6	\$ 6.4	\$ 438.7	\$ 289.7

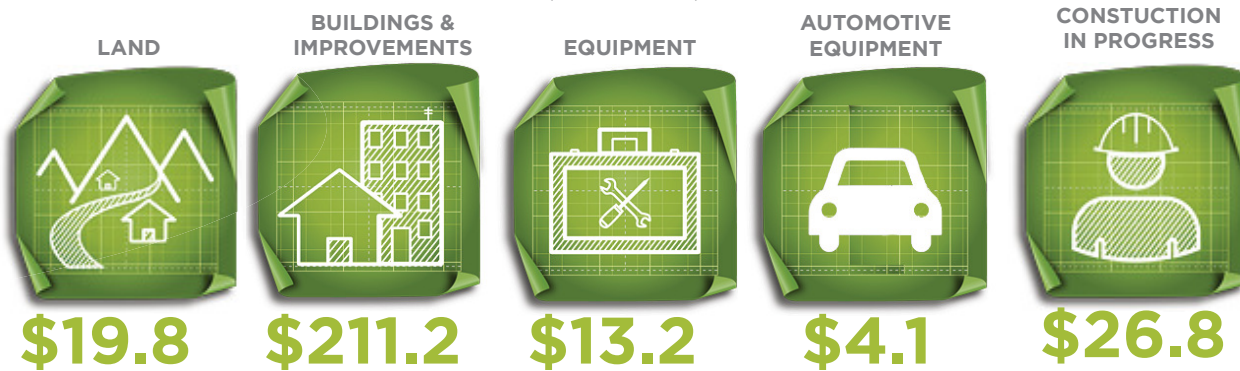


OPERATING INFORMATION

CAPITAL ASSETS

Capital assets are items used to perform the basic operations of the government, which have a useful life of more than one year and meet the capitalization threshold of \$5,000. Some examples of capital assets include: land, buildings, other improvements, equipment, vehicles, intangible assets, and construction in progress. The values shown below for capital assets are a total of governmental and business-type operations. The value is the historical cost, less the accumulated depreciation, for each type of asset. More detailed information about capital assets can be located in the Comprehensive Annual Financial Report.

CAPITAL ASSETS - NET OF DEPRECIATION (in millions)



EMPLOYEES

Over the past nine years, the number of Buncombe County employees has decreased by 103 positions. This has been accomplished by partnering with community agencies and increasing operational efficiencies, such as improved technology, which allows employees to broaden the scope of their duties. The numbers reported below are the number of permanent positions in the General Fund.





BUNCOMBE COUNTY JUDICIAL COMPLEX

CAPITAL IMPROVEMENT PLAN

Buncombe County uses a Capital Improvement Plan (CIP) to identify all capital projects (those costing over \$250,000) requiring funding for the next five years. These are generally for major technology projects, buildings, land, vehicle replacement programs, etc. The CIP is formulated under the direction of the County Manager based upon priorities outlined by the Board of Commissioners. The budget document contains additional information regarding the CIP and may be found at <http://www.buncombecounty.org/Governing/Depts/Administration/budget-management/operating-budget.aspx>

MAJOR PROJECTS COMPLETED DURING FISCAL YEAR 2014 INCLUDE:

- 2014
- *Judicial Complex*
 - *Renovations to Health and Human Services*

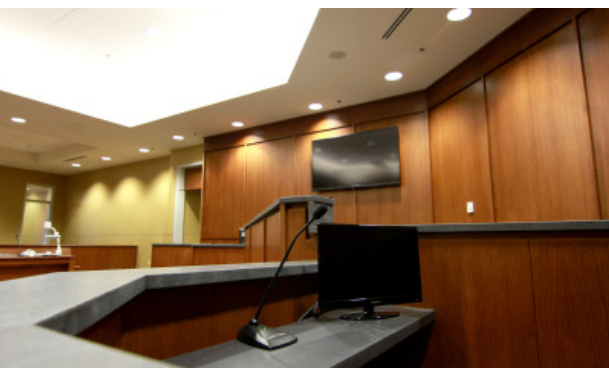
MAJOR PROJECTS PLANNED FROM 2015 - 2018 INCLUDE:

- 2015
- *Public Safety Training Center Classroom Building*
 - *Lake Julian Master Plan*
 - *Voting System Replacement*
- 2018
- *Renovate East Asheville Library*
 - *Human Services Campus Extension**
 - *Indoor Aquatics Center**

**Further research and site analysis planned for these projects.*



JUDICIAL COMPLEX RIBBON CUTTING CEREMONY





GENERAL GOVERNMENT

The General Government function provides administrative support for county government. It includes the Governing Body, County Manager, Human Resources, Finance, Budget & Management Services, the Tax Department, Board of Elections, Register of Deeds and Information Technology. This function serves to maintain compliance with various regulatory requirements, improve communications with citizens, utilize technology to provide effective and efficient services, attract and retain a qualified work force, bill and collect taxes for the county and six municipalities, record and preserve vital records and administer the voting process.

- Highest tax collection rate for counties in North Carolina with a population of 100,000 or greater
- Maintained AAA bond rating from Standard & Poor's and Aa1 rating from Moody's.
- 99.42 percent of property taxes collected by June 30 fiscal year end
- Election Services participation in a Ballot-on-Demand Pilot Program for the state of North Carolina
- 12.7 percent increase in e-Recording transactions processed online in the Register of Deeds Office
- 100 percent of adopted appropriated fund balance saved



PUBLIC SAFETY

The Public Safety function is composed of the Sheriff's Department, Emergency Services, Court Support, Justice Resource Center, Pre-Trial Services, Identification Bureau and Centralized Data Entry, Permits and Inspections, General Services, and the Public Safety Training Center. This function works to ensure the safety of Buncombe County citizens by providing a variety of services such as ambulance services, neighborhood patrol, inspection of buildings, training for emergency personnel throughout Western North Carolina, and maintaining a database of criminal history on all persons arrested or cited in the County.

- Additional EMS unit placed in service to meet the demands of increased call volume
- Achievement Award received by the National Association of Counties (NACo) for the Sheriff's Office Community Oriented Problem Solving program
- 91 percent of identify theft/obstruction of justice warrants served
- 33 percent increase in completion of career development program by offenders to obtain/maintain employment
- 99 percent of inspections completed on the same day if requested by 9:00 AM
- \$0.10 per square foot reduction in energy costs from prior year



HUMAN SERVICES

The Human Services function includes Public Health, Social Services, Aging Services, Human Services Support Team, Child Care Services, and Mental Health. This function serves the community by protecting and promoting the health of all people in Buncombe County; providing resources to citizens that maximize their well-being while promoting self-reliance; meeting the needs of the aging community; and assuring compliance with regulatory agencies which assist in funding human service activities.

- NACo Achievement Award for the development of the Western North Carolina Diversity Engagement Coalition, which targets strategies to recruit, retain and engage individuals to promote a diverse and stable workforce
- NACo Achievement Award for Buncombe County's Community Safety and Security Team, which assesses and manages community safety risk
- CDC recognition for Buncombe County's Express STD Clinic
- "Under Six" Campaign to provide education and awareness for the prevention of child abuse and neglect
- One of six national recipients of the 2014 Robert Wood Johnson Foundation Culture of Health Prize, which honors communities that place a high priority on health



ECONOMIC & PHYSICAL DEVELOPMENT

The Economic and Physical Development function includes Planning, Economic Development, Recycling, Cooperative Extension, and Soil and Water Conservation. This function serves the community by stimulating economic growth, farmland protection, protection and promotion of preserving water and soil quality, provide convenient access to recycling facilities, and balance the need for additional economic and population growth opportunities with environmental stewardship through well-planned infrastructure expansion.

- Collaboration with state and educational agencies to construct a stormwater wetland at a local elementary school, which treats stormwater and also serves as an outdoor classroom
- 367 acres protected through two permanent conservation easements
- 340 new jobs created through Economic Development Incentive efforts
- 37 percent increase in electronics recycling
- Mountain Mobility drivers received 2nd and 3rd place in the NCPTA-NC DOT program to educate drivers and showcase the skills of public transit drivers across North Carolina
- Cooperative Extension volunteers gave over 18,500 hours of service, which equates to over \$420,000 in services rendered to Buncombe County citizens



CULTURE & RECREATION

The Culture and Recreation function includes the Parks, Greenways, and Recreation; the Library system and arts, museum and history. This function serves citizens by providing library and recreational facilities and programs to improve quality of life for Buncombe County residents by responding to the growth and diversity needs of our community.

- The Community Recreation Grant invested in 18 non-profit projects to enhance recreation, health & wellness, and cultural education
- 6 percent increase in citizens with active library cards
- 17 percent increase in participants for Buncombe County activities that promote recreation, wellness, exercise and safety
- Over 5,000 lunches were provided to children throughout the summer through a partnership with the public school system (an increase of 35 percent from the prior summer)
- Over 125,000 electronic library resources available to the public
- Library book circulation over 1.6 million



Government Finance Officers Association

Award for Outstanding Achievement in Popular Annual Financial Reporting

Presented to

**Buncombe County
North Carolina**

For its Annual
Financial Report
for the Fiscal Year Ended

June 30, 2013

Executive Director/CEO

The Government Finance Officers Association of the United States and Canada (GFOA) has given an Award for Outstanding Achievement in Popular Annual Financial Reporting to Buncombe County for its Popular Annual Financial Report for the fiscal year ended June 30, 2013. The Award for Outstanding Achievement in Popular Annual Financial Reporting is a prestigious national award recognizing conformance with the highest standards for preparation of state and local government popular reports.

In order to receive an Award for Outstanding Achievement in Popular Annual Financial Reporting, a government unit must publish a Popular Annual Financial Report, whose contents conform to program standards for creativity, presentation, understandability, and reader appeal.

An Award for Outstanding Achievement in Popular Annual Financial Reporting is valid for a period of one year only. We believe our current report continues to conform to the Popular Annual Financial Reporting standards.

BUNCOMBE COUNTY SERVICE DIRECTORY

Air Quality Agency 250-6777
 Burning Control 250-6777
 Building /Grounds Maintenance 250-4233
 BCTV 250-4109

City/County ID Bureau

Background Checks 250-4661
 CJIS (Criminal Justice Info Sys.) 250-4661
 Clerk to the Board of Commissioners 250-4105
 College St. Parking Garage 250-4248
 Cooperative Extension 255-5522
 County Commissioners 250-4001
 County Jobline 250-4183
 County Manager 250-4100
 Election Services 250-4200
 Emergency Services 250-6600
 Emergencies 911
 Erosion Control 250-4848
 Finance 250-4130
 Fire Marshal 250-6620
 GIS Property Info System 250-6860

HHS - Health & Human Services

Public Assist/Economic Serv's 250-5500
 Child Care Assistance 250-5000
 Crisis Intervention Program:
 ABCCM 259-5300
 Eblen Charities 255-3066
 Swannanoa Christian Ministry 669-9404
 Emergency Assistance Program 255-3066
 Food Assistance 250-5500
 Health Choice 250-5500
 Low Income Energy Assistance 255-3066
 Medicaid 250-5500
 Work First Family Assistance 250-5500
 Workforce Development 255-2500
 Work Permit 250-5500

Public Health (Main)

Breast & Cervical Cancer 250-6006
 Disease Control 250-5109
 Environmental Health 250-5016
 Family Planning 250-5000
 Foreign Travel Immunizations 250-5096
 Health Promotion 250-5045
 Immunization 250-5096
 Nurse Family Partnership 250-5072
 Restaurant/Septic Inspection 250-5016
 School Health 250-5018
 Vital Records
 Births 250-5214
 Death 250-5213
 Water Testing 250-5016
 WIC/Nutrition 250-5000
 WNCCHS: Dental/Primary Care 285-0622

Social Work Services (Main)

Protective Services Intake:
 Adults 250-5800
 Children 250-5900
 Prevention Services & Under 6 250-6000
 General Adult Services 250-5814
 Child Support Enforcement 250-6340 or 1-800-992-9457
 General Children/Family Services 250-5822
 Foster Home Licensing 250-5868
Veterans Services 250-5726
HHS Administration 250-5700
 Human Resources 250-4166
 JobLink 250-4761

Libraries

Pack Memorial (Main) 250-4700
 Black Mountain 250-4756
 East Asheville 250-4738
 Enka 250-4758
 Fairview 250-6484
 Law Library 250-4734
 Leicester 250-6480
 North 250-4752
 Oakley 250-4754
 South Buncombe 250-6488
 Swannanoa 250-6486
 Weaverville 250-6482
 West Asheville 250-4750
 Storyline 250-5437
 Mountain Mobility 250-6750
 Mountain Area Job Training 250-4761
 Parking - College Street Deck 250-4248
 Parks & Recreation 250-4260
 Permits/Inspections 250-5360
 Planning 250-4830
 Pretrial Services 250-6285
 Purchasing 250-4130
 Records Management 250-4147
 Register of Deeds 250-4300

Sheriff

Animal Control Dispatch (County) 250-6670
 Civil Process 250-4410
 Crime Stoppers 255-5050
 Crime Prevention 250-4427
 Detention Center (Jail) 250-4550
 Inmate Booking 250-4570
 Senior Reassurance 250-4475
 Warrants 250-4410

Soil and Water Conservation 250-4785

Solid Waste

Environmental Control 250-5470
 Household Hazardous Waste Disposal 250-5462
 Junk Cars 250-4847
 Landfill 250-5462
 Mobile Home Removal 250-5470
 Transfer Station 250-6205
 Trash Disposal (City) 259-5857
 (County - Waste Pro) 684-7790
 Street Addressing (Planning) 250-4845

Tax Department

Business Personal Property 250-4930
 Collections 250-4910
 Land Records 250-4970
 Personal Property 250-4920
 Real Estate 250-4940
 Transportation (MTN Mobility) 250-6750
 Whistleblower Hotline 866-908-7236

OTHER USEFUL NUMBERS

Animal Control

City 259-5872
 County Dispatch 250-6670
 Dead Animals (City) 259-5857
 (County [only in roadways]) 298-0390

Animal Shelter

Better Business Bureau 253-2392

Business License

City 259-5595
 NC 800-228-8443
 Chamber of Commerce 258-6101

Child Support Enforcement 232-1416
City of Asheville 251-1122
 Police 259-5870
 Fire/Rescue 259-5636
 Mayor 259-5600
 Parks & Festivals 259-5800
 Water Billing 251-1122
 Water Leaks 251-1122

Community Information 2-1-1
 Council on Aging 277-8288

Court Related Matters

Clerk of Court 259-3400
 District Attorney 259-3410
 Estates and Probate 259-3404
 Jury Clerk 259-6407
 Justice Resource Center 250-4281
 Magistrate 250-4690
 Public Defender 259-3423

Department of Labor 299-8232
 Department of Transportation 298-2741

Driver's License Office / DMV

Patton Avenue 251-6065
 Eblen Foundation 255-3066
 Employment Security Commission 251-6200
 Federal Courthouse 771-7200
 Governor's Western Office 251-6160
 Housing Authority 258-1222
 IRS 800-829-1040

License Tag Office

Innsbruck Mall 252-8526
 Hendersonville Road 277-7767
 Metropolitan Sewerage District 254-9646
 Backups & Overflows 255-0061
 Sewer Applications 250-5345

Municipalities

City of Asheville 259-5600
 Town of Biltmore Forest 274-0824
 Town of Black Mountain 419-9300
 Town of Montreat 669-8002
 Town of Weaverville 645-7116
 Town of Woodfin 253-4887

OSHA 299-8232

Road Maintenance

In the County (NCDOT) 298-0390
 City of Asheville 251-1122
 Town of Biltmore Forest 274-0824
 Town of Black Mountain 419-9300
 Town of Montreat 669-8002
 Town of Weaverville 645-0606
 Town of Woodfin 253-4887

Schools

Asheville City 350-7000
 Buncombe County 255-5921
 Closing Hotline 255-5939

Social Security 1-866-572-8361
 State Highway Patrol 298-4256
 State Revenue 667-0597
 Streets and Roads (DOT) 298-0390

Street Signs/Addressing

County 250-4845
 City 259-5850

US Postal Service 800-275-8777
 Water Department 251-1122

Zoning

City 259-5831
 County 250-4830