

**S  
A  
M  
P  
L  
E  
  
B  
A  
L  
L  
O  
T**

**Sample Republican Primary Ballot  
Buncombe County, North Carolina  
May 6, 2014**

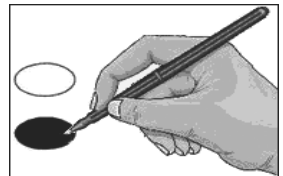


**R003**



**BALLOT MARKING INSTRUCTIONS:**

- A. With the marking device provided or a black ball point pen, completely fill in the oval to the left of each candidate or selection of your choice as shown.
- B. If you tear, deface or wrongly mark this ballot, return it to request a replacement.



PARTISAN OFFICES	Board of County Commissioners District 3 (You may vote for ONE)	NONPARTISAN OFFICES
<p align="center"><b>US Senate</b> (You may vote for ONE)</p>		<p align="center"><b>NC Supreme Court Associate Justice</b> (You may vote for ONE)</p>
<p><input type="radio"/> Thom Tillis</p>	<p><input type="radio"/> David King</p>	<p><input type="radio"/> Eric Levinson</p>
<p><input type="radio"/> Jim Snyder</p>	<p><input type="radio"/> Miranda DeBruhl</p>	<p><input type="radio"/> Robin Hudson</p>
<p><input type="radio"/> Edward Kryn</p>	<p><input type="radio"/> Lewis Clay</p>	<p><input type="radio"/> Jeanette Doran</p>
<p><input type="radio"/> Mark Harris</p>		<p align="center"><b>NC District Court Judge District 28</b> (You may vote for ONE)</p>
<p><input type="radio"/> Heather Grant</p>		<p><input type="radio"/> J. Matthew Martin</p>
<p><input type="radio"/> Alex Lee Bradshaw</p>		<p><input type="radio"/> Ed Clontz</p>
<p><input type="radio"/> Greg Brannon</p>		<p><input type="radio"/> J. Thomas Amburgey</p>
<p><input type="radio"/> Ted Alexander</p>		<p align="center"><b>End of Ballot</b></p>