



**General Election**

# Early Voting



**BUNCOMBE COUNTY**  
ELECTION SERVICES

## Overview

Buncombe County Board of Elections will hold several public meetings to consider the proposed early voting implementation plan for the 2024 General Election. Input will be taken in person and via online survey. The proposed plan will be posted online on Monday, April 22<sup>nd</sup> for the public to view and have an opportunity to provide feedback. All meetings will be held in person (59 Woodfin Pl, Asheville 28801) and virtually.

### Implementation Plan Review and Meeting Schedule:

- Monday 4/22 – Public input survey opens online at noon.
- Tuesday 4/23 (3:30pm) – Proposed Implementation plan presented to Board.
- Tuesday 4/30 (3:30pm) – Preliminary review of online public input and in-person input.
- Friday 5/3 – Public input survey closes online at 5:00pm.
- Tuesday 5/7 – Final review and vote by Board.

The Board must approve a plan by a unanimous decision. It is up to the Board to determine the number of early voting sites and weekend hours for the 2024 General Election. Current statutory<sup>1</sup> requirements mandate specific hours for weekdays and for the last Saturday. Under the same law, county board of elections are permitted to choose a site other than its office if the site is “reasonably proximate” to the office. These sites are typically referred to as “in lieu of sites”. The State Board provided additional guidance in the form of a numbered memo<sup>2</sup> which specifies how to determine if a site is reasonably proximate to the county board of elections.

### Hours of Operation Mandates:

- Mandatory weekday hours are still 8:00 am to 7:30 pm.
- Last Saturday of early voting hours are still 8:00 am to 3:00 pm.
- Must maintain uniform hours for all sites. If one site is open, then all one stop sites must be open for the same number of hours. This requirement applies to weekdays and weekends.

---

<sup>1</sup> §163-227.6

<sup>2</sup> Numbered Memo 2020-13

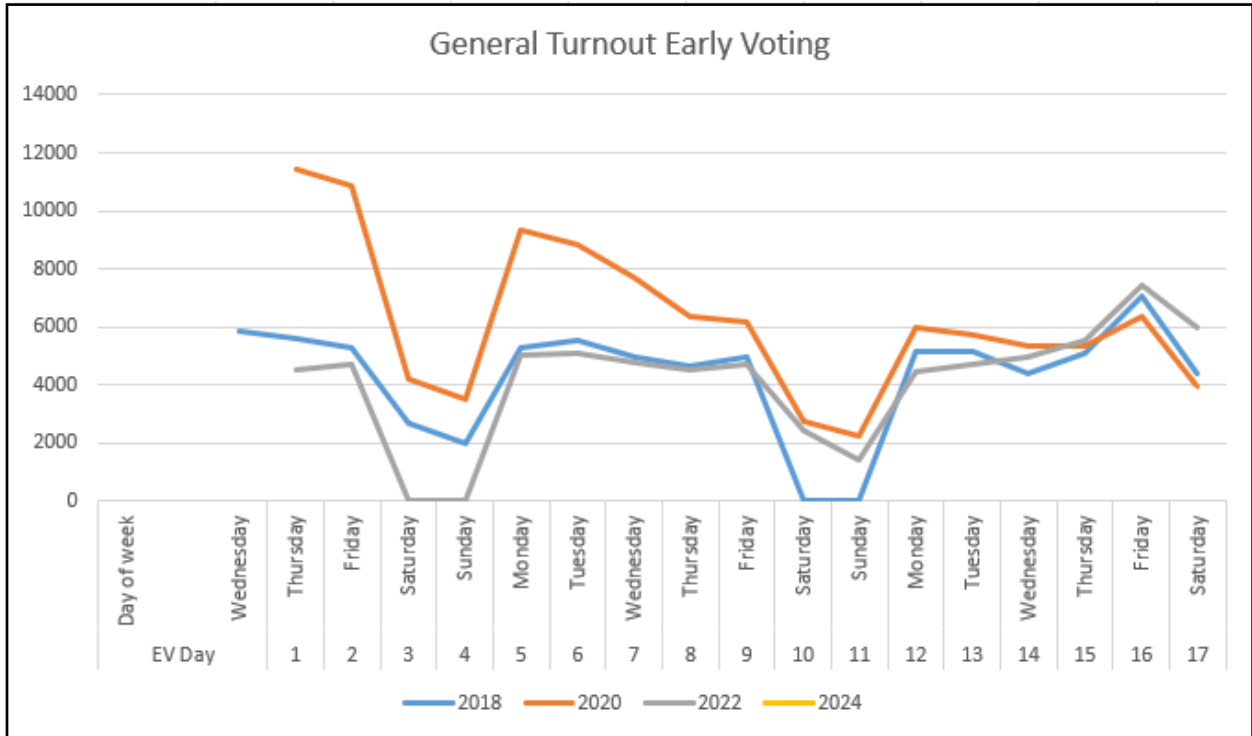
## Early Voting Dates

- October 17<sup>th</sup> through November 2<sup>nd</sup>

Sunday 10/13	Monday 10/14	Tuesday 10/15	Wednesday 10/16	Thursday 10/17	Friday 10/18	Saturday 10/19
				All Sites 8:00 am – 7:30 pm	All Sites 8:00 am – 7:30 pm	<b>To be Determined by Board</b>
Sunday 10/20	Monday 10/21	Tuesday 10/22	Wednesday 10/23	Thursday 10/24	Friday 10/25	Saturday 10/26
<b>To Be Determined by Board</b>	All Sites 8:00 am – 7:30 pm	All Sites 8:00 am – 7:30 pm	All Sites 8:00 am – 7:30 pm	All Sites 8:00 am – 7:30 pm	All Sites 8:00 am – 7:30 pm	<b>To Be Determined by Board</b>
Sunday 10/27	Monday 10/28	Tuesday 10/29	Wednesday 10/30	Thursday 10/31	Friday 11/1	Saturday 11/2
<b>To Be Determine by Board</b>	All Sites 8:00 am – 7:30 pm	All Sites 8:00 am – 7:30 pm	All Sites 8:00 am – 7:30 pm	All Sites 8:00 am – 7:30 pm	All Sites 8:00 am – 7:30 pm	All Sites 8:00 am – 3:00 pm

# Historical Data

## General Elections Turnout Trends



## 2020 General Election

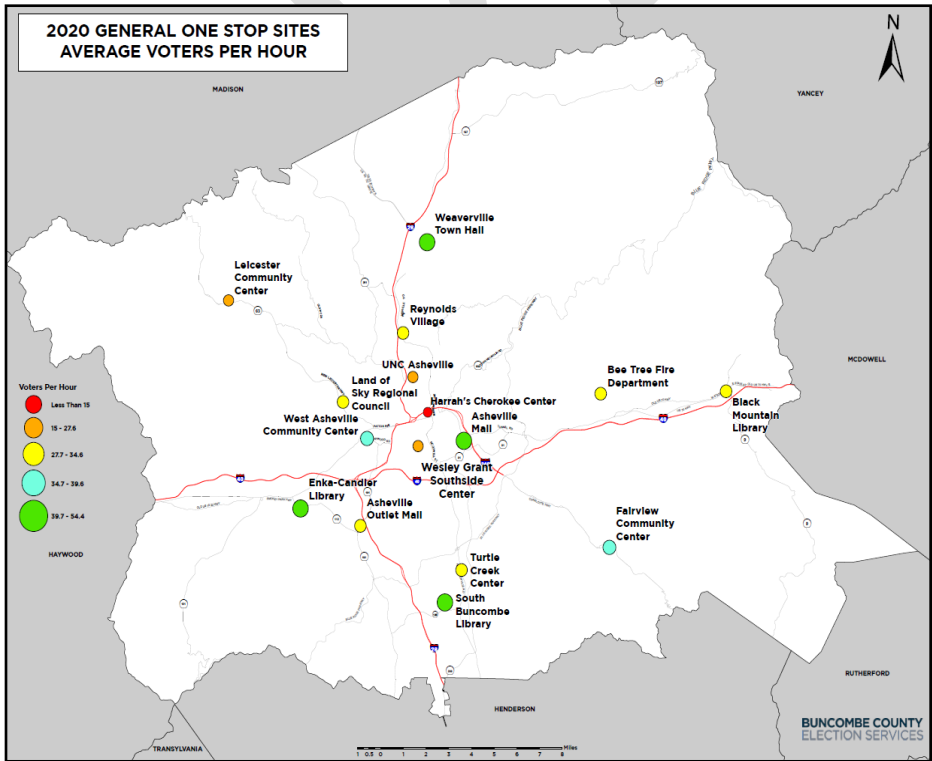
### Hours of Operation:

- For this election, we were mandated to open all sites the same days/hours (8:00am to 7:30pm) during the week and the County Board decided weekend hours.
- On the last Saturday, we were mandated to open from 8:00am to 3:00pm.

				Thursday 10/15	Friday 10/16	Saturday 10/17
				<b>All Sites 8:00 am - 7:30 pm</b>	<b>All Sites 8:00 am - 7:30 pm</b>	<b>All Sites 10:00 am - 3:00 pm</b>
Sunday 10/18	Monday 10/19	Tuesday 10/20	Wednesday 10/21	Thursday 10/22	Friday 10/23	Saturday 10/24
<b>All Sites 10:00 am – 3:00 pm</b>	<b>All Sites 8:00 am - 7:30 pm</b>	<b>All Sites 8:00 am - 7:30 pm</b>	<b>All Sites 8:00 am - 7:30 pm</b>	<b>All Sites 8:00 am - 7:30 pm</b>	<b>All Sites 8:00 am - 7:30 pm</b>	<b>All Sites 10:00 am - 3:00 pm</b>
Sunday 10/25	Monday 10/26	Tuesday 10/27	Wednesday 10/28	Thursday 10/29	Friday 10/30	Saturday 10/31
<b>All Sites 10:00 am - 3:00 pm</b>	<b>All Sites 8:00 am - 7:30 pm</b>	<b>All Sites 8:00 am - 7:30 pm</b>	<b>All Sites 8:00 am - 7:30 pm</b>	<b>All Sites 8:00 am - 7:30 pm</b>	<b>All Sites 8:00 am - 7:30 pm</b>	<b>All Sites 8:00 am – 3:00 pm</b>

## 2020 Early Voting Sites & Ballots Cast

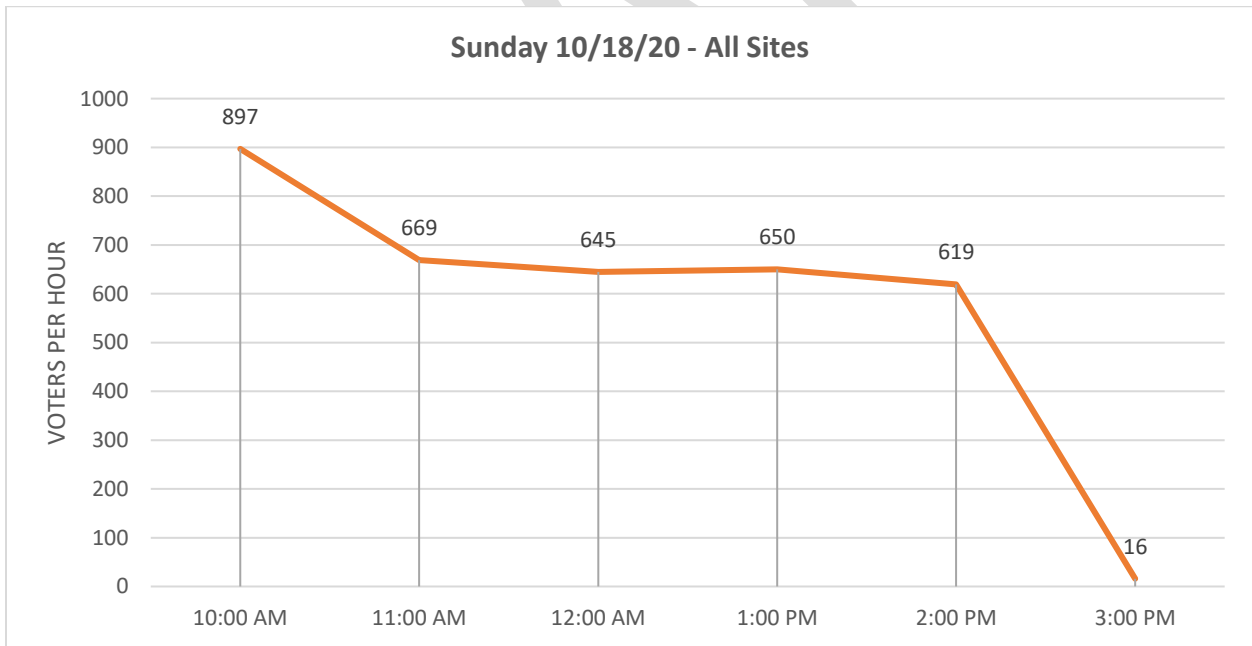
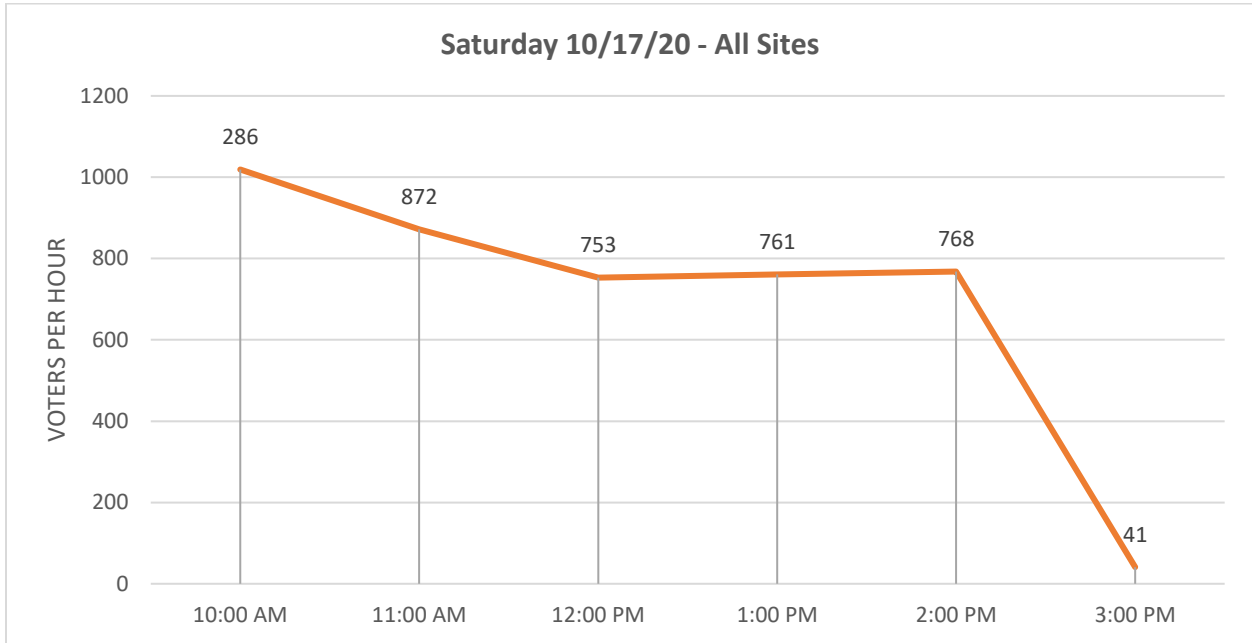
Site Name	Ballots Cast	Voters Per Hour	Days Open
Asheville Mall (AVML)	8,901	53.9	17
Asheville Outlet Mall (AVOM)	6,608	40	17
Bee Tree Fire Department (BTFD)	5,664	34.3	17
Black Mountain Library (BMBL)	6,608	40	17
Enka-Candler Library (ECBL)	8,684	52.6	17
Fairview Library (FVBL)	7,478	45.3	17
Harrah's Cherokee Center (HACC)	2,778	13.8	17
Land of Sky Regional Council (LSKY)	5,846	35.4	17
Leicester Community Center (LECC)	5,280	32	17
Reynolds Village (REYV)	6,330	38.3	17
South Buncombe Library (SBBL)	8,794	53.2	17
Turtle Creek Shopping Center (TCRK)	5,949	36	17
UNC-Asheville (UNCA)	4,872	29.5	17
Weaverville Town Hall (WVTH)	10,385	62.9	17
Wesley Grant Sr. Southside Center (WGSC)	4,337	26.2	17
West Asheville Community Center (WACC)	7,559	45.8	17
<b>Total Voters</b>		<b>106,073</b>	
<b>Average Voter Per Hour Per Site</b>		<b>40.17</b>	



Total turnout for the 2020 General Election = 162,139

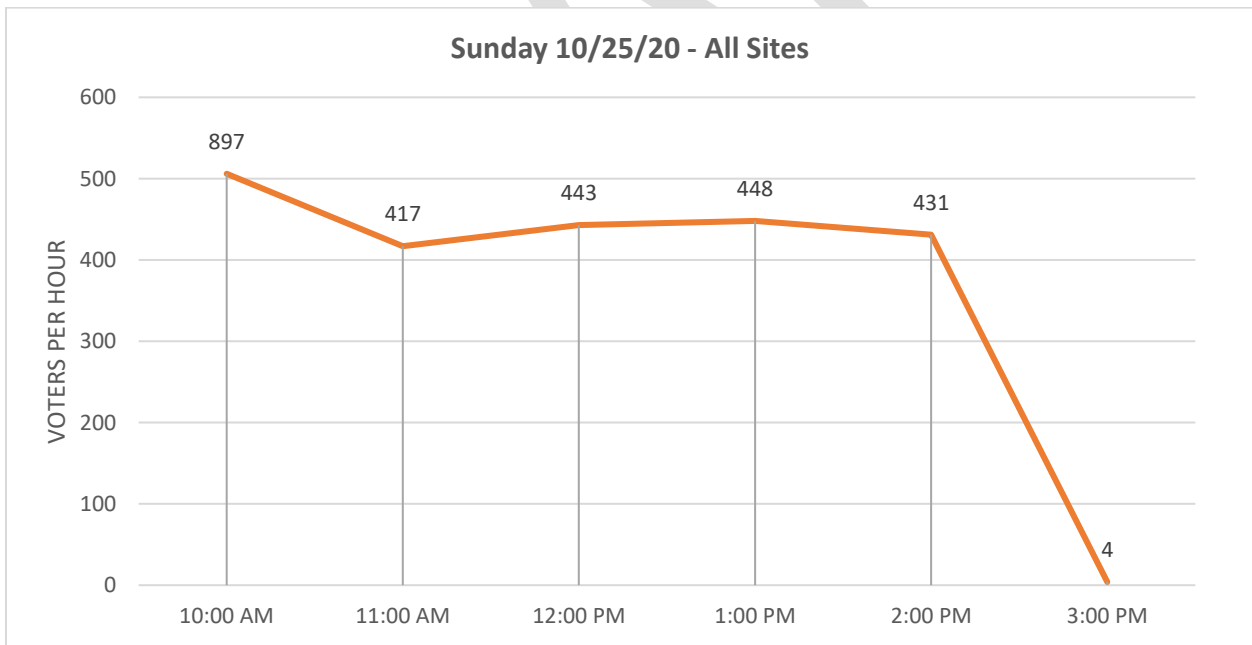
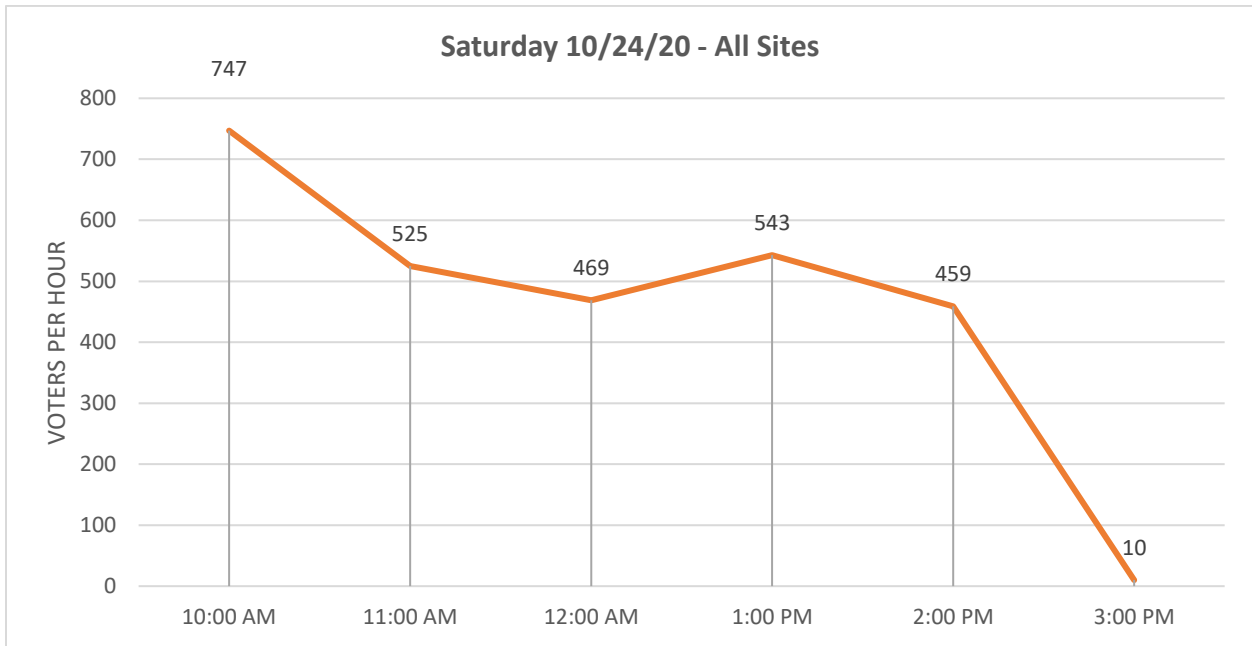
Early Voting total turnout = 106,073 (65% of total voter turnout)

## 2020 Saturday and Sunday Turnout





## 2020 Saturday and Sunday Turnout



## 2016 General Election

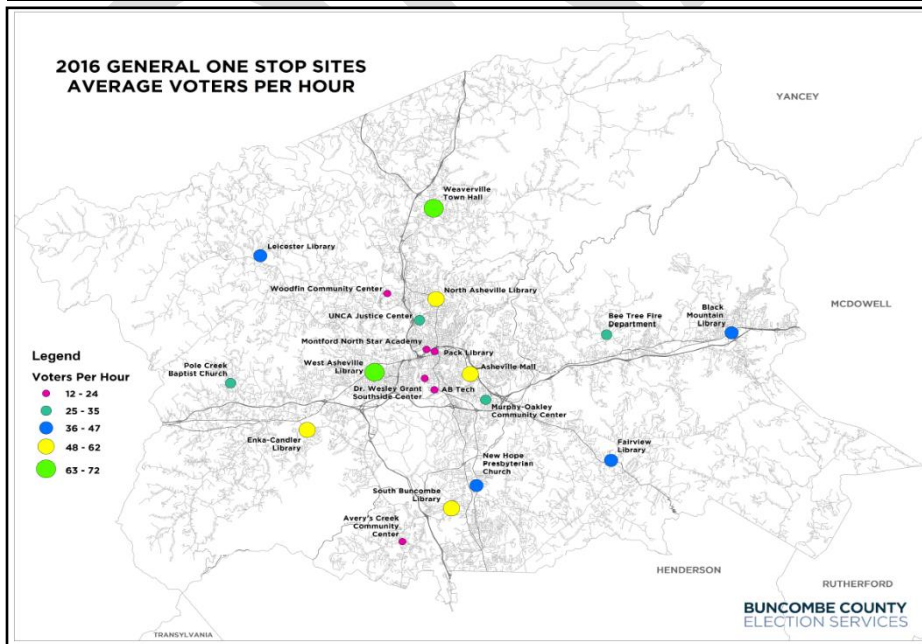
### Hours of Operation:

- For this election, County Board’s decided the weekday and weekend hours.
- Last Saturday, we closed at 1:00pm vs. 3:00pm.

Sunday	Monday	Tuesday	Wednesday	Thursday 10/20	Friday 10/21	Saturday 10/22
				<b>16 Sites</b> <b>10:00 am-</b> <b>6:00 pm</b>	<b>16 Sites</b> <b>10:00 am-</b> <b>6:00 pm</b>	<b>16 Sites</b> <b>10:00 am-</b> <b>6:00 pm</b>
Sunday 10/23	Monday 10/24	Tuesday 10/25	Wednesday 10/26	Thursday 10/27	Friday 10/28	Saturday 10/29
<b>Closed</b>	<b>16 Sites</b> <b>10:00 am-</b> <b>6:00 pm</b>	<b>16 Sites</b> <b>10:00 am-</b> <b>6:00 pm</b>	<b>16 Sites</b> <b>10:00 am-</b> <b>6:00 pm</b>	<b>All Sites</b> <b>10:00 am-</b> <b>6:00 pm</b>	<b>All Sites</b> <b>10:00 am-</b> <b>6:00 pm</b>	<b>All Sites</b> <b>10:00 am-</b> <b>6:00 pm</b>
Sunday 10/30	Monday 10/31	Tuesday 11/1	Wednesday 11/2	Thursday 11/3	Friday 11/4	Saturday 11/5
<b>8 Sites</b> <b>1:00 pm-</b> <b>6:00 pm</b>	<b>All Sites</b> <b>10:00 am-</b> <b>6:00 pm</b>	<b>All Sites</b> <b>10:00 am-</b> <b>6:00 pm</b>	<b>All Sites</b> <b>10:00 am-</b> <b>6:00 pm</b>	<b>All Sites</b> <b>10:00 am-</b> <b>6:00 pm</b>	<b>All Sites</b> <b>10:00 am-</b> <b>6:00 pm</b>	<b>All Sites</b> <b>8:00 am-</b> <b>1:00 pm</b>

## 2016 Early Voting Sites & Ballots Cast

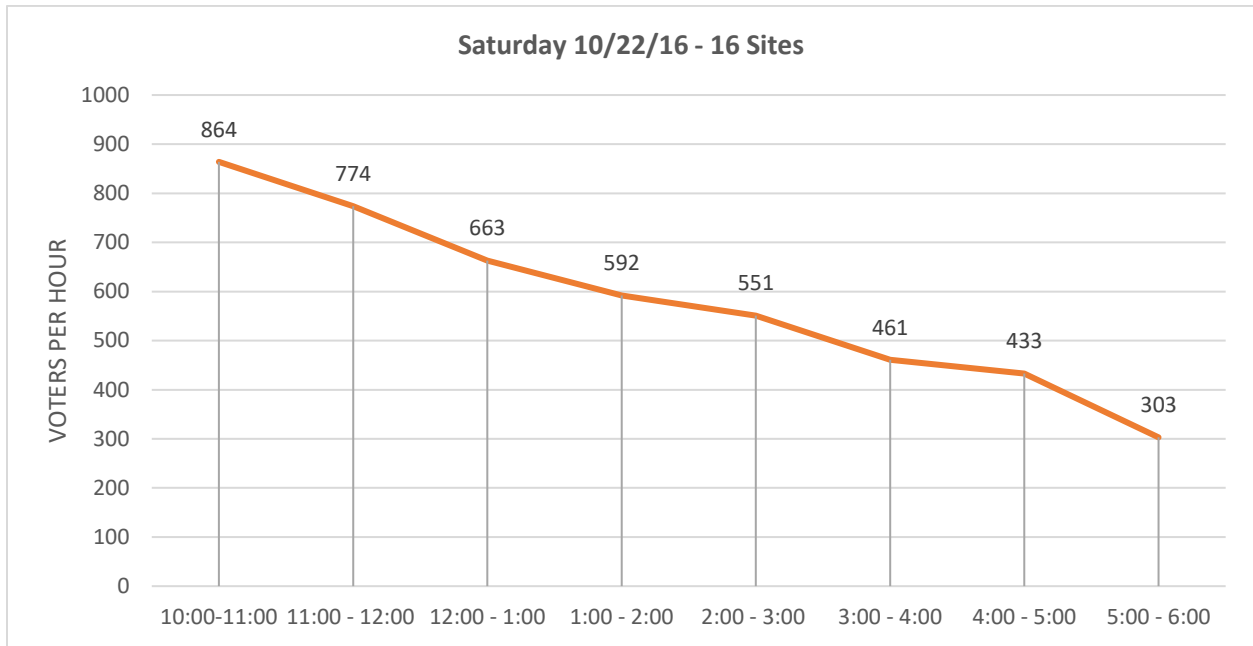
Site Name	Ballots Cast	Voters Per Hour	Days Open
AB-Tech Community College (ABTC)	959	12.3	9
Avery's Creek Community Center (ACCC)	2890	21.9	15
Asheville Mall (AVML)	6986	52.9	15
Bee Tree Fire Department (BTFD)	6349	33.4	15
Black Mountain Library (BMBL)	4405	46.4	16
Enka-Candler Library (ECBL)	8376	61.1	16
Fairview Library (FVBL)	6260	45.7	16
Leicester Library (LCBL)	5773	42.2	16
Montford North Star Academy (MONT)	3027	22.9	15
Murphy-Oakley Recreation Center (MORC)	2336	30	9
New Hope Presbyterian Church (NHPC)	5782	43.8	16
North Asheville Library (NABL)	8093	59.1	15
Pack Library (PACK)	3036	22.1	16
Pole Creek Baptist Church (PCBC)	2020	25.9	9
South Buncombe Library (SBBL)	8018	58.5	16
UNC-Asheville (UNCA)	3593	27.3	15
Weaverville Town Hall (WVTH)	9176	69.5	16
Wesley Grant Sr. Southside Center (WGSC)	2696	20.4	15
West Asheville Library (WABL)	9767	71.3	9
Woodfin Community Center (WOCO)	1412	18.1	15
<b>Total Voters</b>		<b>100,954</b>	
<b>Average Voter Per Hour Per Site</b>		<b>39.24</b>	



Total turnout for the 2016 General Election = 140,021

Early Voting total turnout = 100,954 (72% of total voter turnout)

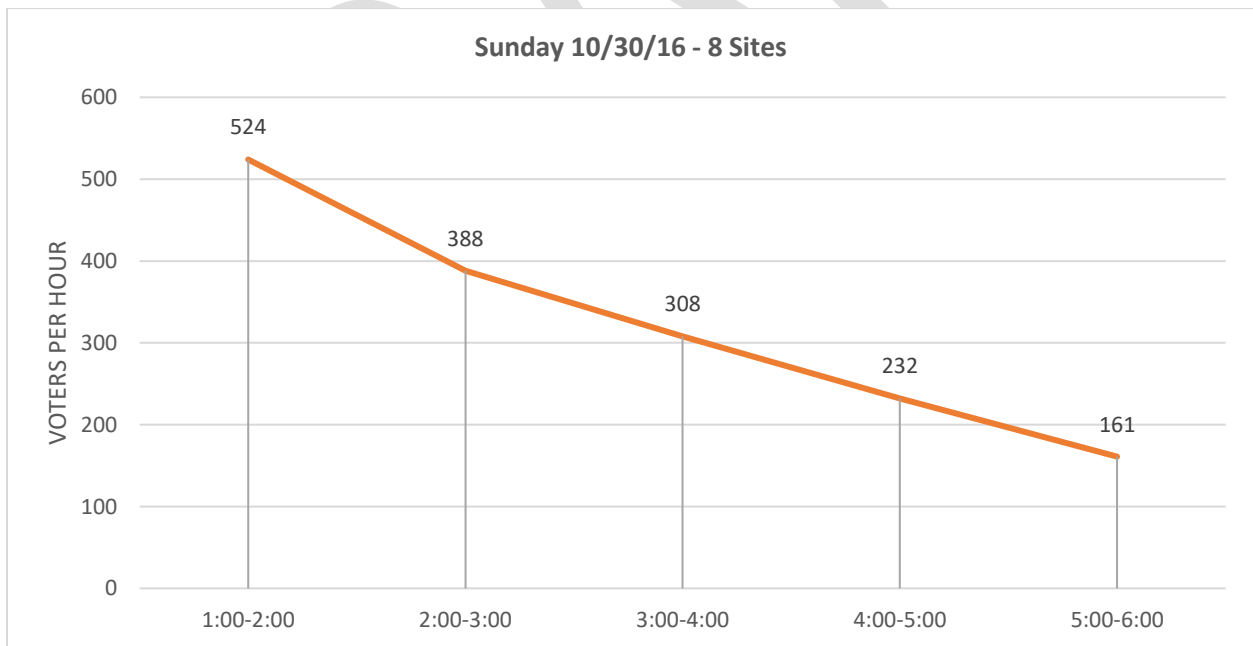
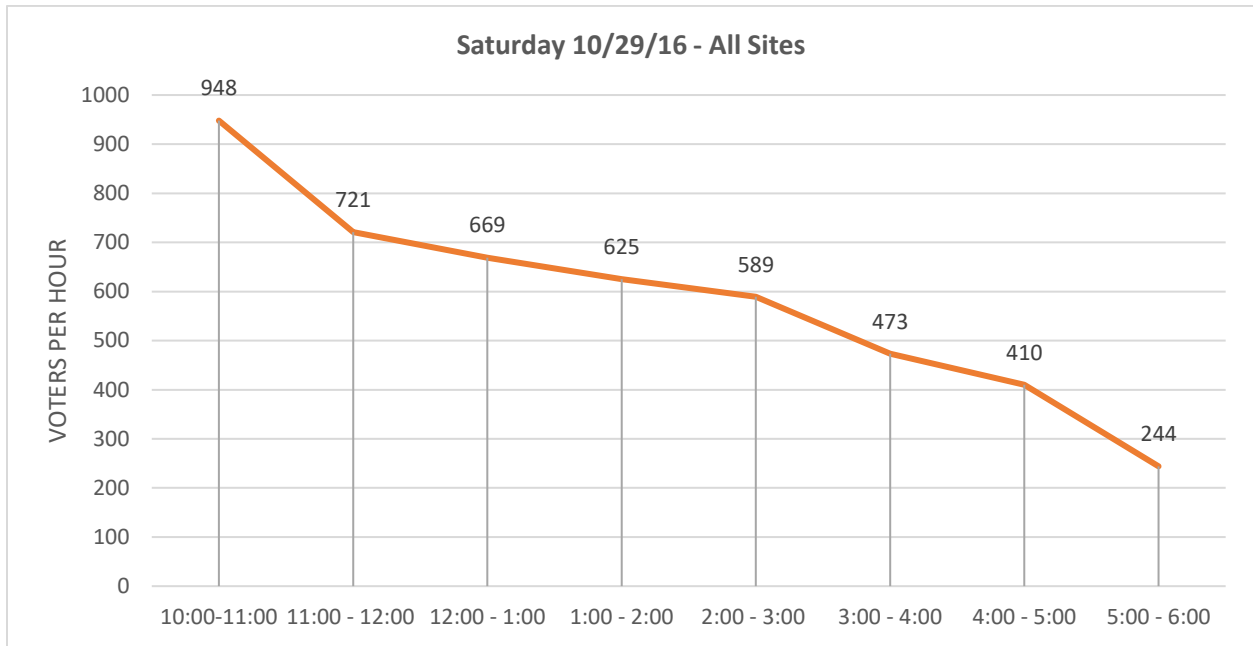
## 2016 Saturday and Sunday Turnout



- **Closed Sunday 10/23/16**

DRAFT

## 2016 Saturday and Sunday Turnout



# Proposed Plan



## 2024 General Election

Staff is recommending the 13 early voting sites listed below. We also highly recommend that the Board approve weekend hours that would allow for only one shift to work per day instead of the two shifts that poll workers normally work weekdays. This will ensure poll workers can rotate days and have a day off during the two and half weeks we are open.

### Proposed Sites:

1. Bee Tree Fire Station – 510 Bee Tree Rd, Swannanoa 28778
2. Black Mountain Library – 105 N. Dougherty St, Black Mountain 28711
3. East Asheville Library– 3 Avon Rd, Asheville 28805
4. Enka-Candler Library – 1404 Sand Hill Rd, Candler 28715
5. Fairview Library – 1 Taylor Rd, Fairview 28730
6. Friendship Center – 142 Shiloh Rd, Asheville 28803
7. Leicester Community Center – 2979 New Leicester Hwy, Leicester 28748
8. North Asheville Location – TBD
9. South Buncombe Library – 260 Overlook Rd, Asheville 28803
10. UNC-Asheville – (specific location within campus to be determined)
11. Weaverville Community Center – 60 Lakeshore Dr, Weaverville 28787
12. Wesley Grant Southside Center (in lieu of BOE) – 285 Livingston St, Asheville 28801
13. West Asheville Library – 942 Haywood Rd, Asheville 28806

### Recommended Weekend Hours:

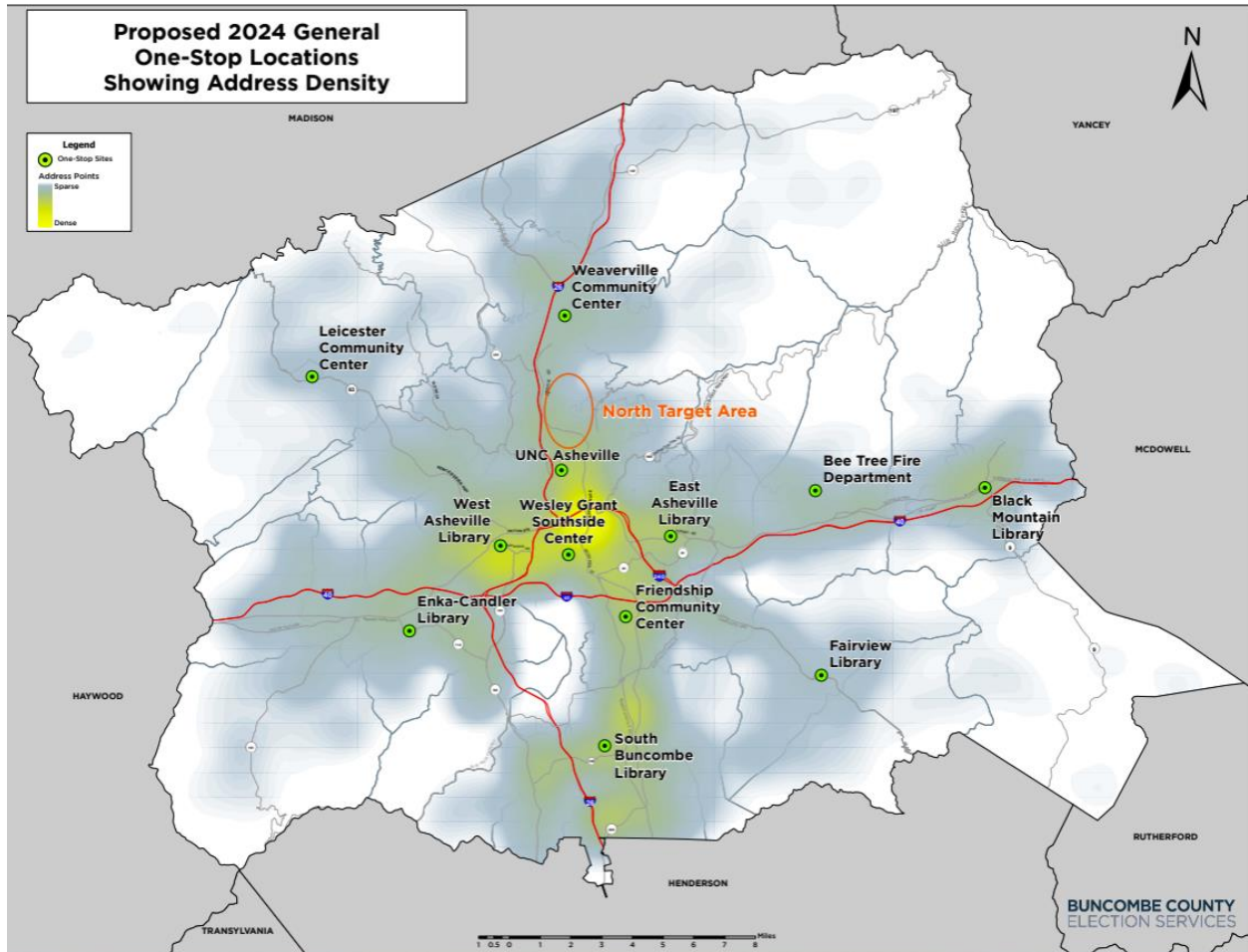
- Recommend one shift on Saturday and/or Sunday.
- Recommended weekend hours of 10:00 am to 3:00 pm, five hours plus the additional time needed to complete opening and closing duties.
  - Open both Saturdays – October 19 and October 26
  - Open one Sunday – October 27

### Inclement Weather:

In the event of inclement weather, staff proposes that as part of the implementation plan, we will adhere to the following changes in the hours of operation:

- If all of Buncombe County public offices and/or libraries close or operate on a delayed schedule due to inclement weather, each early voting site will follow Buncombe County's directive.
- The Director of the Board of Elections is responsible for communicating any delays or closings to the personnel operating the early voting sites and notify the public as soon as possible upon receiving the information from Buncombe County.
- In case of partial closures, the Board will be required to meet.
- These changes in hours of operations follow Resolution 2024-01 that was approved by the Board on February 6, 2024. See appendix.

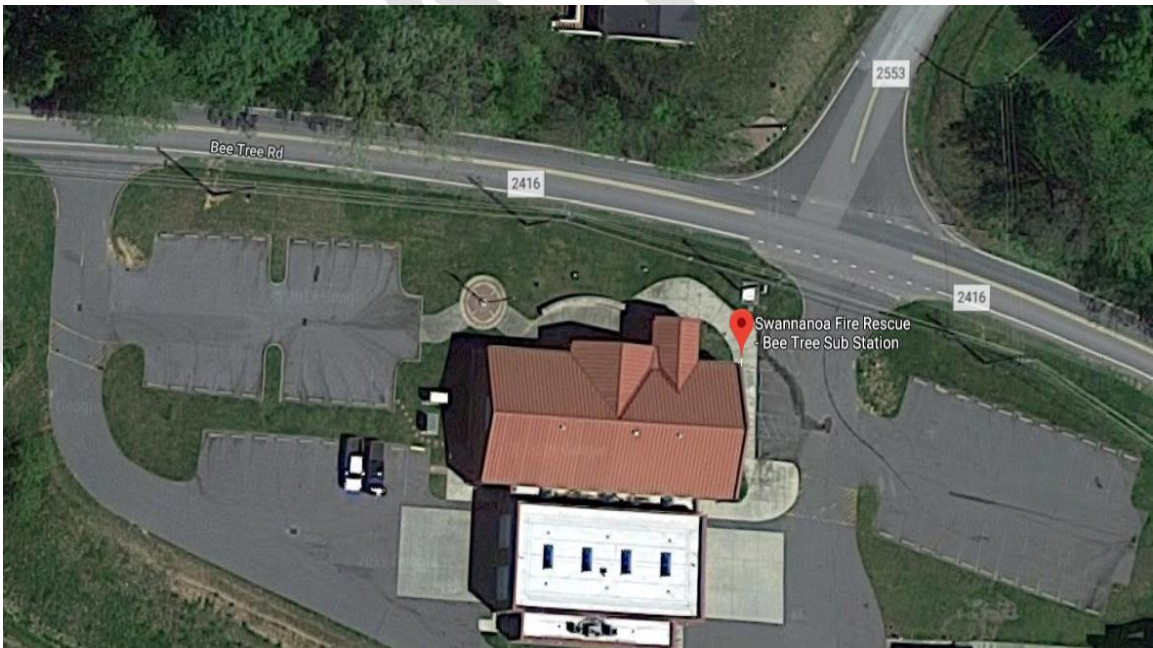
# 2024 General Election Proposed Sites





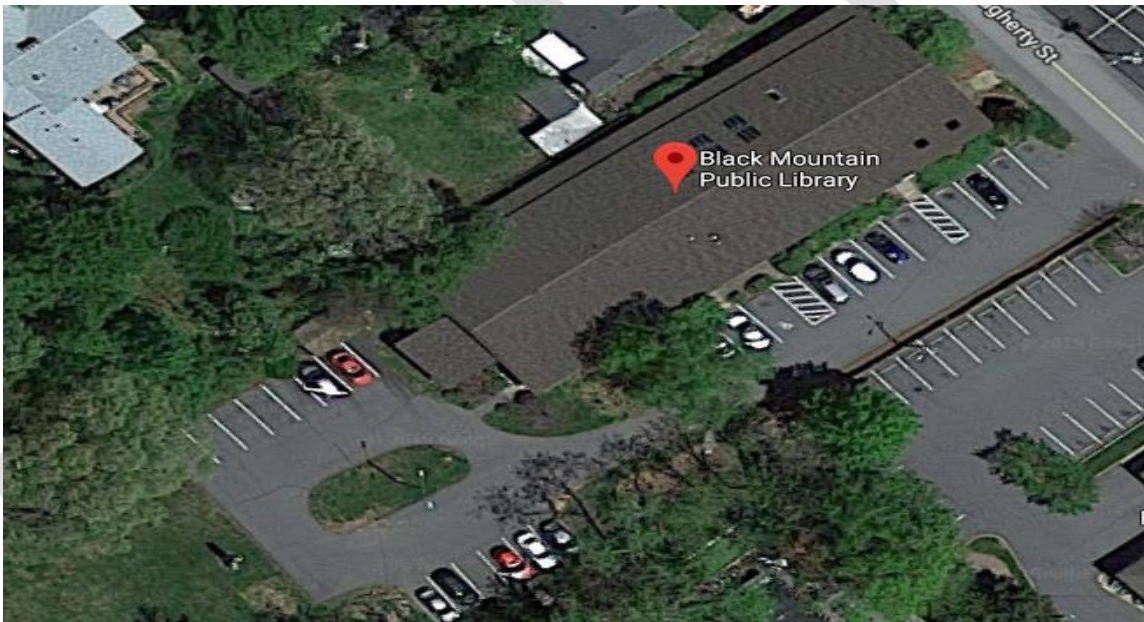
## Proposed Site Information

1. Bee Tree Fire Department – 510 Bee Tree Rd, Swannanoa 28778



Voting Enclosure	Voter Parking Spaces	Curbside Parking Spaces	Prior Early Voting Site
Meeting Room	42	1	Yes

2. Black Mountain Library – 105 N. Dougherty St, Black Mountain 28711



Voting Enclosure	Voter Parking Spaces	Curbside Parking Spaces	Prior Early Voting Site
Community Room	24	1	Yes

3. East Asheville Library – 3 Avon Rd, Asheville 28805



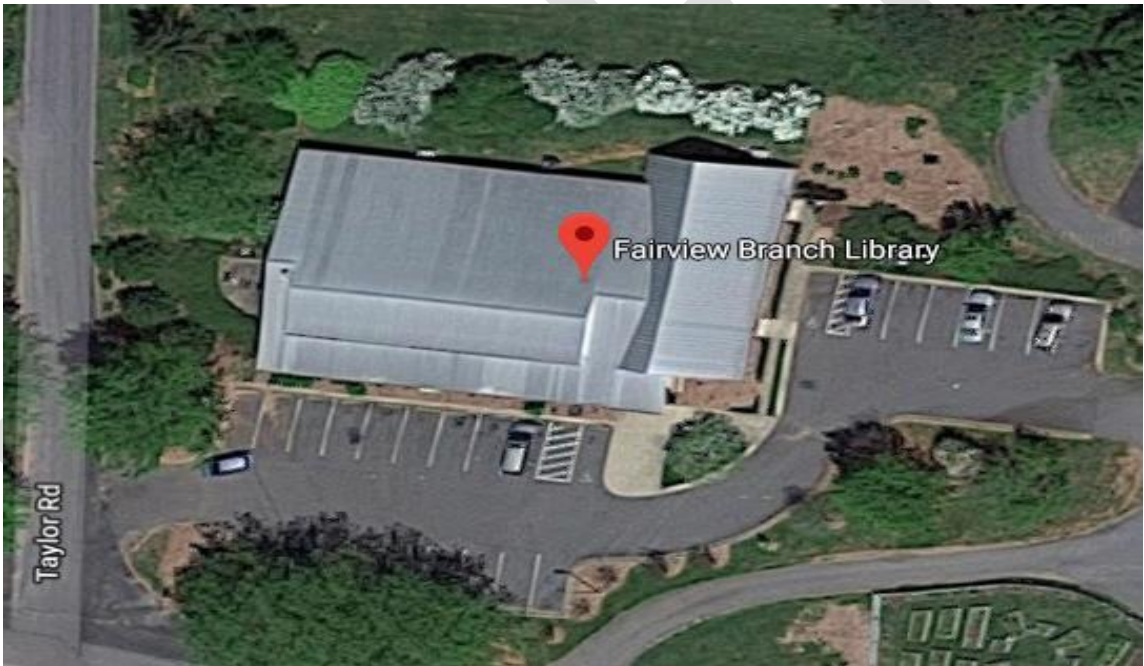
Voting Enclosure	Voter Parking Spaces	Curbside Parking Spaces	Prior Early Voting Site
Community Room	54	1	No

4. Enka-Candler Library – 1404 Sand Hill Rd, Candler 28715



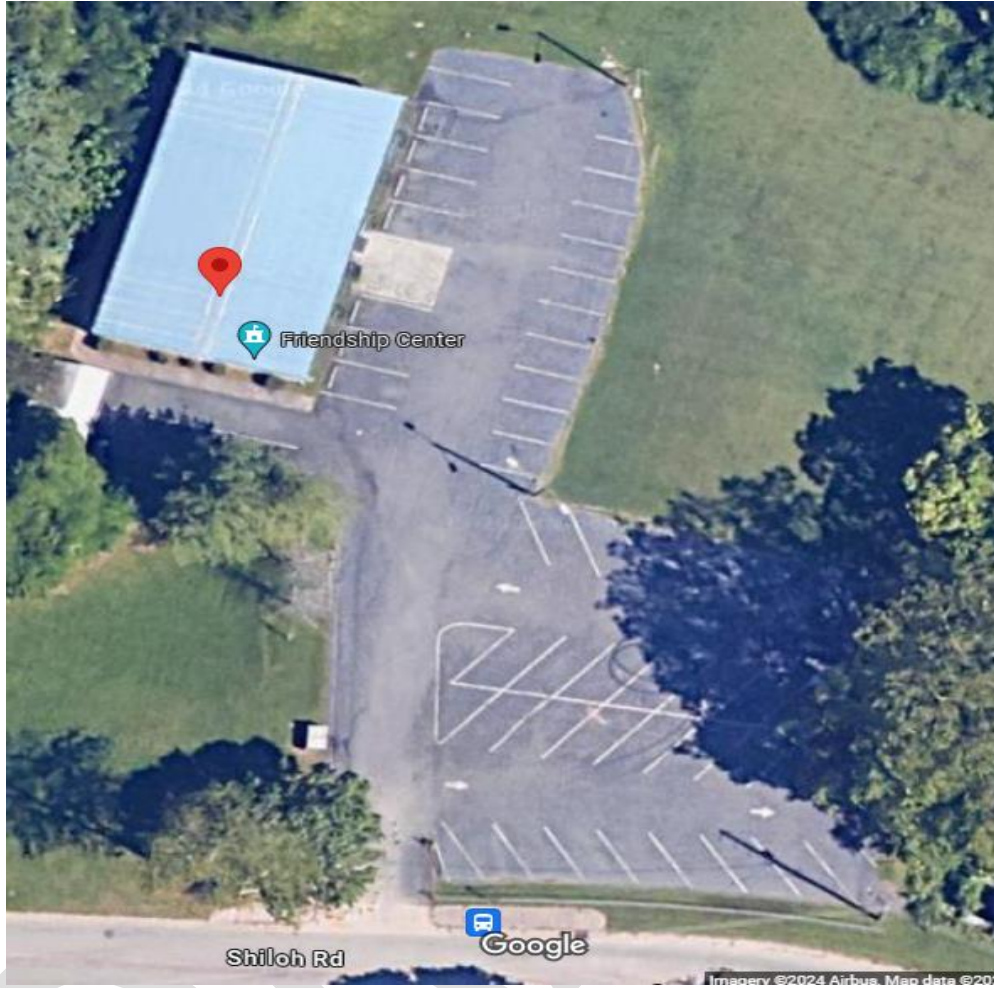
Voting Enclosure	Voter Parking Spaces	Curbside Parking Spaces	Prior Early Voting Site
Community Room	27	1	Yes

5. Fairview Library – 1 Taylor Rd, Fairview 28730



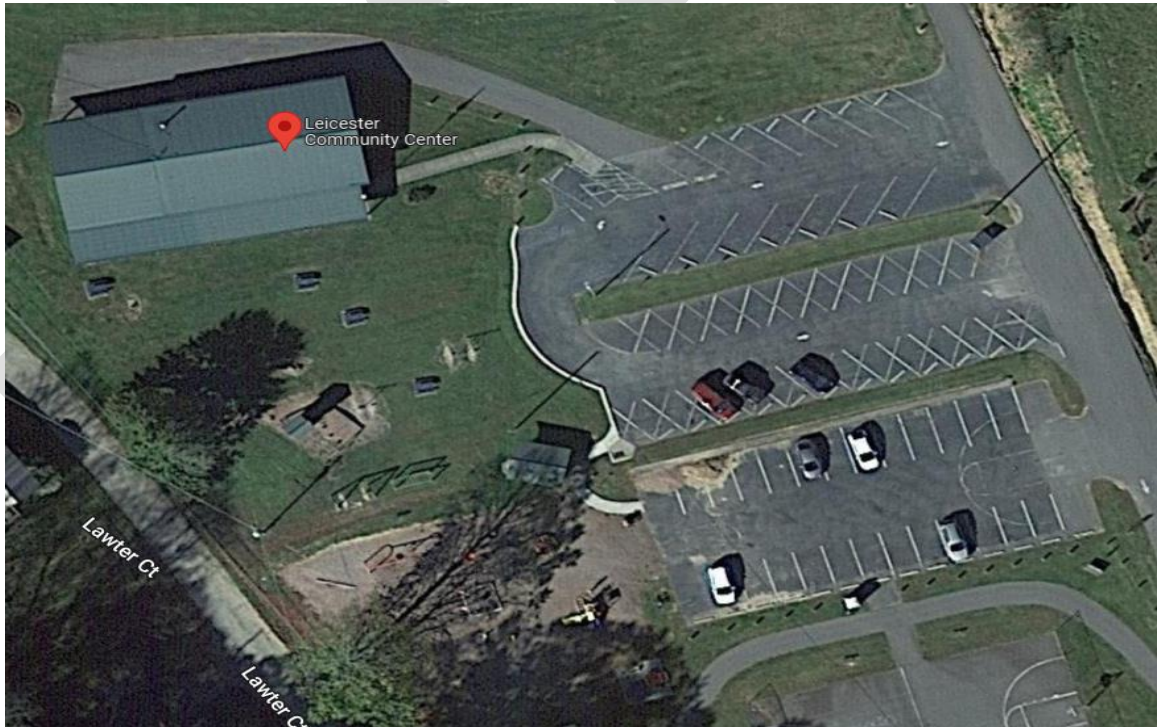
Voting Enclosure	Voter Parking Spaces	Curbside Parking Spaces	Prior Early Voting Site
Community Room	28	1	Yes

6. Friendship Center – 142 Shiloh Rd, Asheville 28803



Voting Enclosure	Voter Parking Spaces	Curbside Parking Spaces	Prior Early Voting Site
Community Room	52	1	Yes

7. Leicester Community Center – 2979 New Leicester Hwy, Leicester 28748



Voting Enclosure	Voter Parking Spaces	Curbside Parking Spaces	Prior Early Voting Site
Community Room	60	1	Yes

8. North Asheville location – To be determined





9. South Buncombe Library – 260 Overlook Rd, Asheville 28803

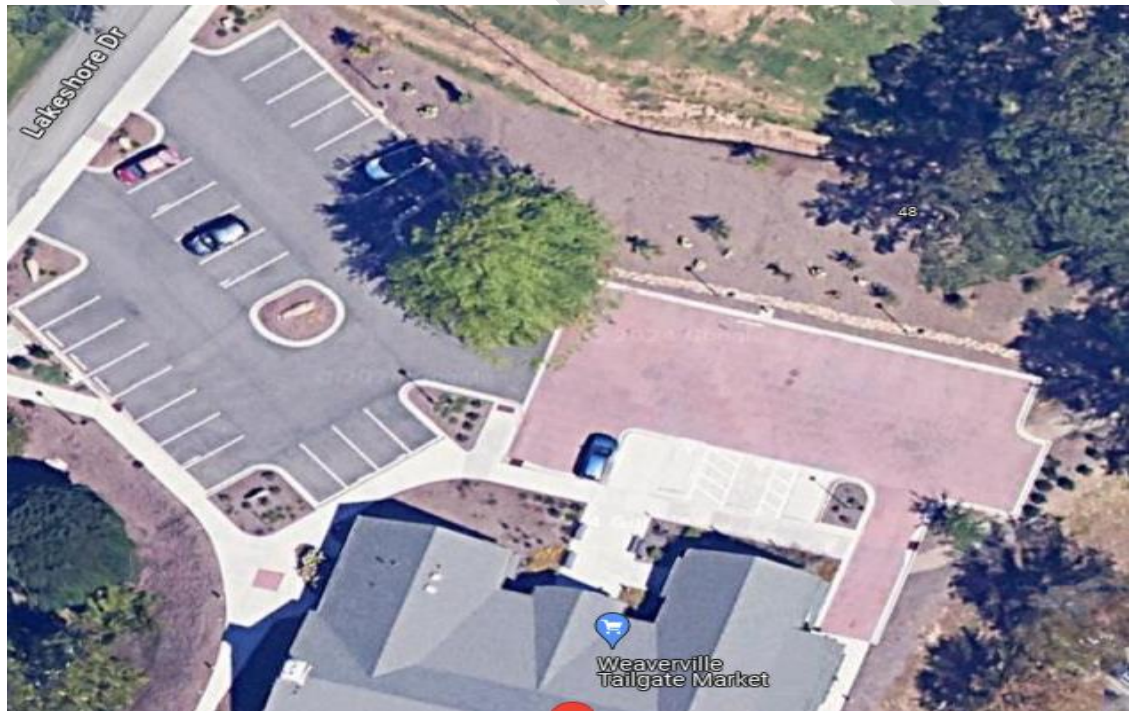


Voting Enclosure	Voter Parking Spaces	Curbside Parking Spaces	Prior Early Voting Site
Community Room	25	1	Yes

10. UNC Asheville – location on campus to be determined.

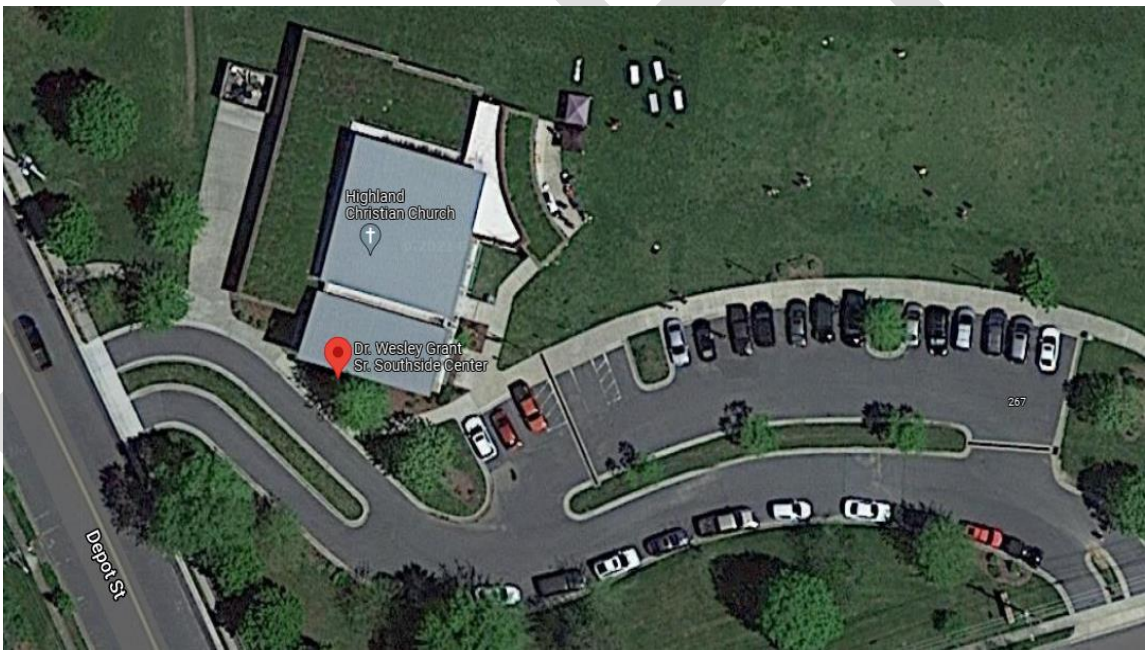


11. Weaverville Community Center – 60 Lakeshore Dr, Weaverville 28787



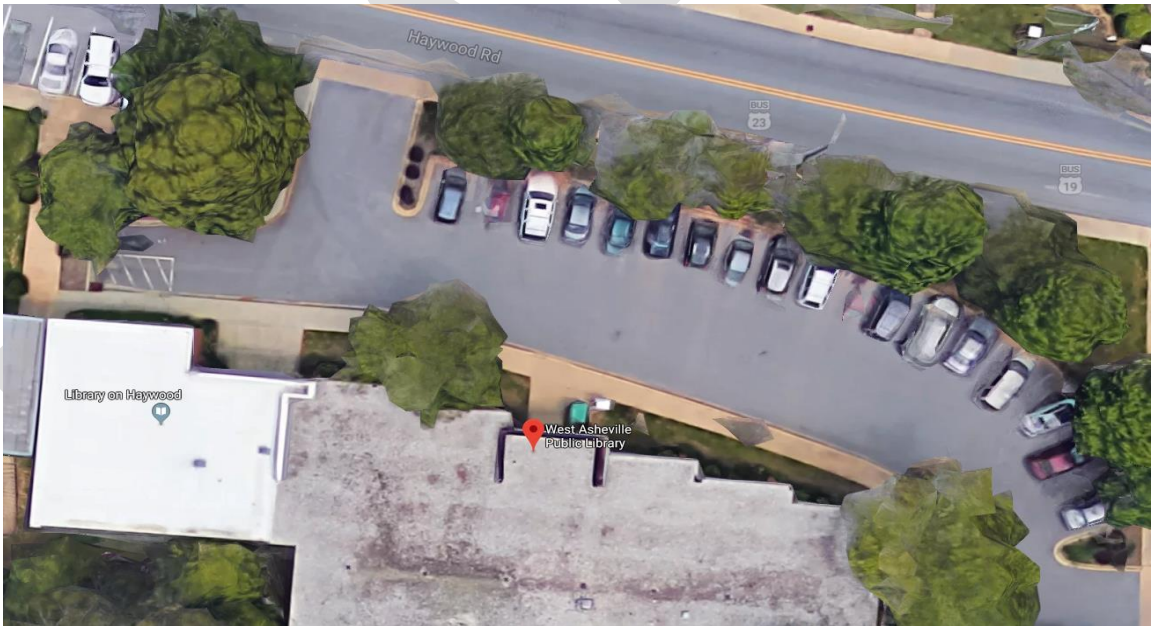
Voting Enclosure	Voter Parking Spaces	Curbside Parking Spaces	Prior Early Voting Site
Community Room	45	1	Yes

12. Wesley Grant Southside Center – 285 Livingston St, Asheville 28801



Voting Enclosure	Voter Parking Spaces	Curbside Parking Spaces	Prior Early Voting Site
Community Room	25	1	Yes

13. West Asheville Library – 942 Haywood Rd, Asheville 28806



Voting Enclosure	Voter Parking Spaces	Curbside Parking Spaces	Prior Early Voting Site
Community Room	21	1	Yes

# Appendix: 2024 Primary Early Voting Inclement Weather Resolution

## RESOLUTION NO. 2024-01

### A RESOLUTION AMENDING BUNCOMBE COUNTY'S EARLY VOTING IMPLEMENTATION PLAN FOR THE 2024 PRIMARY AS IT RELATES TO THE HOURS OF OPERATION DURING INCLEMENT WEATHER

- WHEREAS, pursuant to N.C. Gen. Stat. § 163-166.35, the county board of elections is responsible for adopting an early voting implementation plan establishing the hours of operation for each early voting site; and
- WHEREAS, on October 17, 2023, by motion in unanimous approval, the Buncombe County Board of Elections adopted an Early Voting Implementation Plan for the 2024 Primary for Buncombe County (herein "BCEVIP24P"); and
- WHEREAS, on December 19, 2023, the North Carolina State Board of Elections approved the BCEVIP24P; and
- WHEREAS, the Buncombe County Board of Elections wishes to amend the hours of operation of the early voting sites due to inclement weather in the BCEVIP24P.

NOW, THEREFORE, BE IT RESOLVED, by the Buncombe County Board of Elections as follows:

1. That the BCEVIP24P be amended to state that if all of Buncombe County public offices and libraries closes or operates on a delayed schedule due to inclement weather, each early voting site will follow Buncombe County's directive.
2. The Director of the Board of Elections is responsible for communicating any delays or closings to the personnel operating the early voting sites and notify the public as soon as possible upon receiving the information from Buncombe County.
3. This resolution only applies to closures of all Early Voting locations. In case of partial closures, the Board will be required to meet.
4. This resolution shall be effective upon its adoption.

This the 6<sup>th</sup> day of February 2024.

BUNCOMBE COUNTY BOARD OF ELECTIONS

BY: 

Jake Quinn, Chair