



COMMUNITY VISION

we asked...

what is a word or phrase to describe what you want Buncombe to be like within 20 years?

input was used for...

developing The Plan's Vision statement. Anyone who lives, works, owns property, or goes to school in Buncombe County could participate.

you shared...

what you want for the county's future. Word Cloud results were categorized into general themes to show the focus areas most mentioned by participants. The resulting word cloud is below:

1,321
people added
words to the
Word Cloud



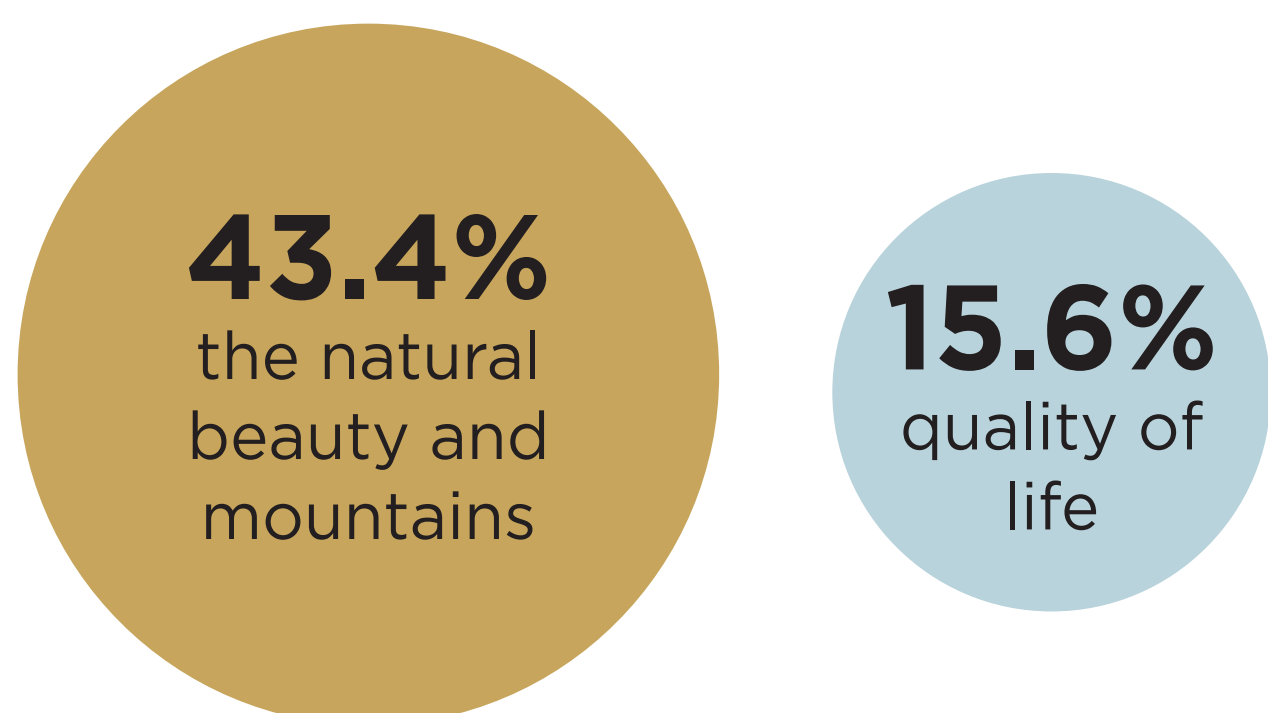


LIVING & WORKING

We asked...

questions about living and working in Buncombe. Below are the top responses.

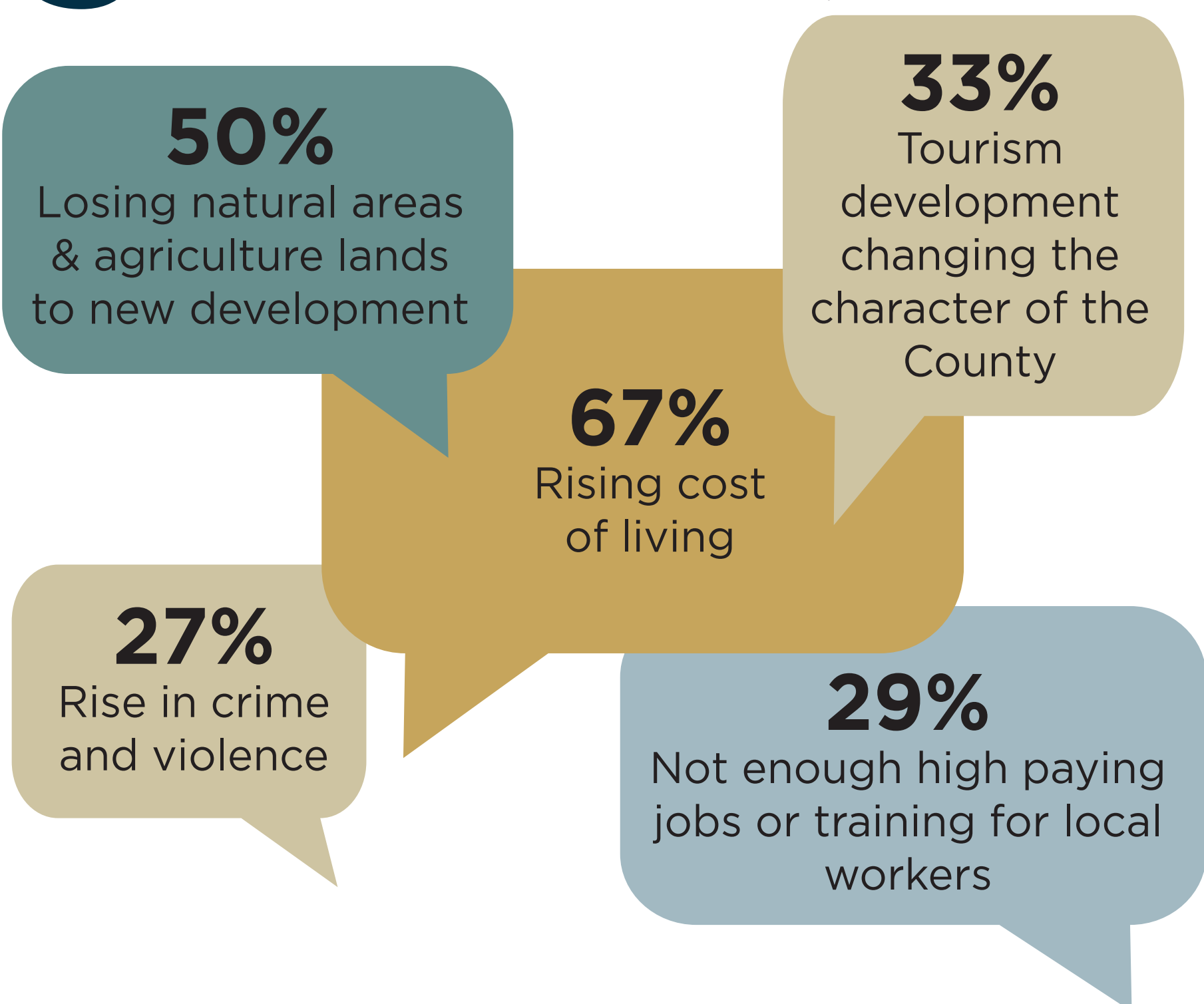
1 Why do you choose to live or work in Buncombe County?



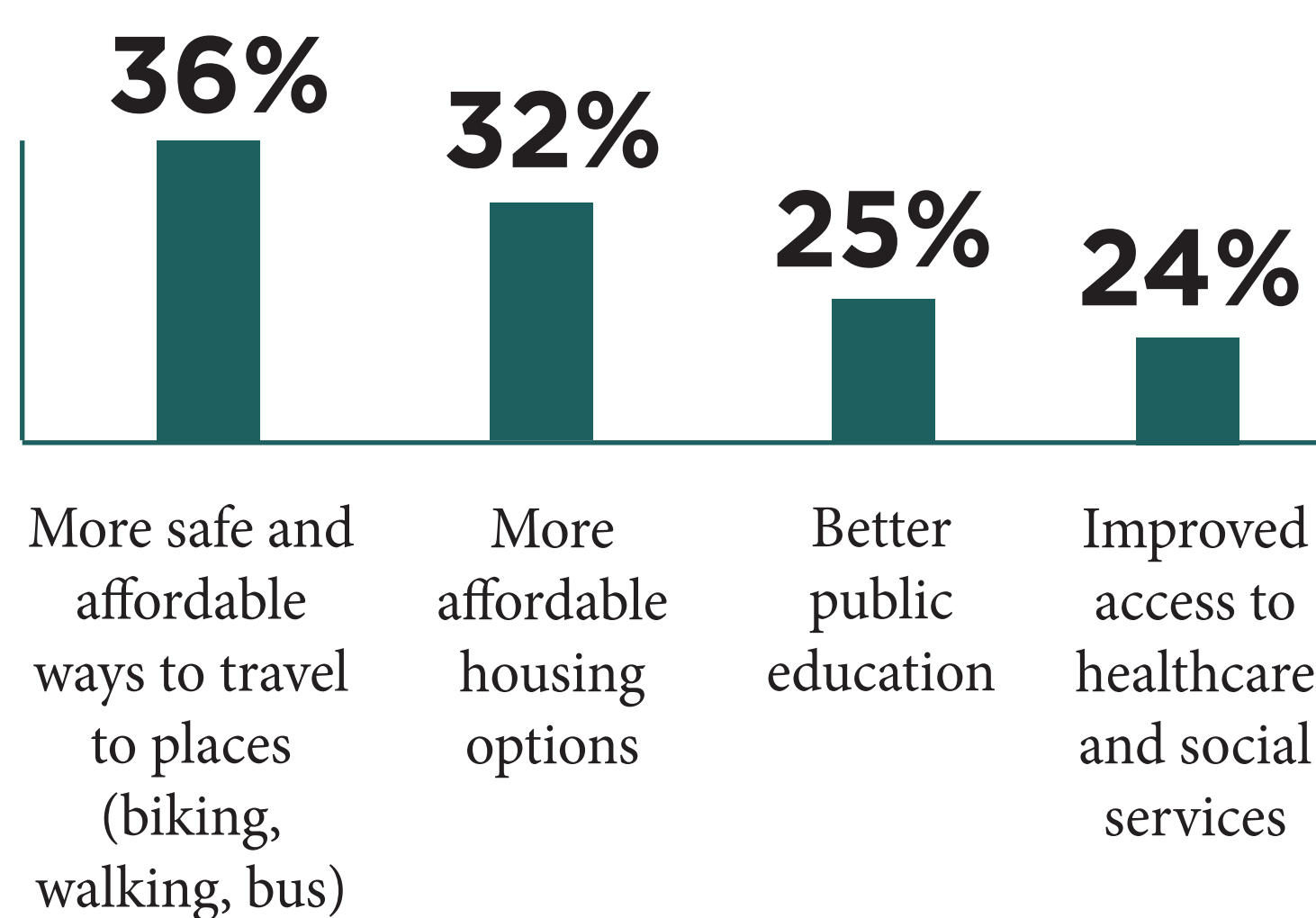
2 What do you like most about Buncombe County?



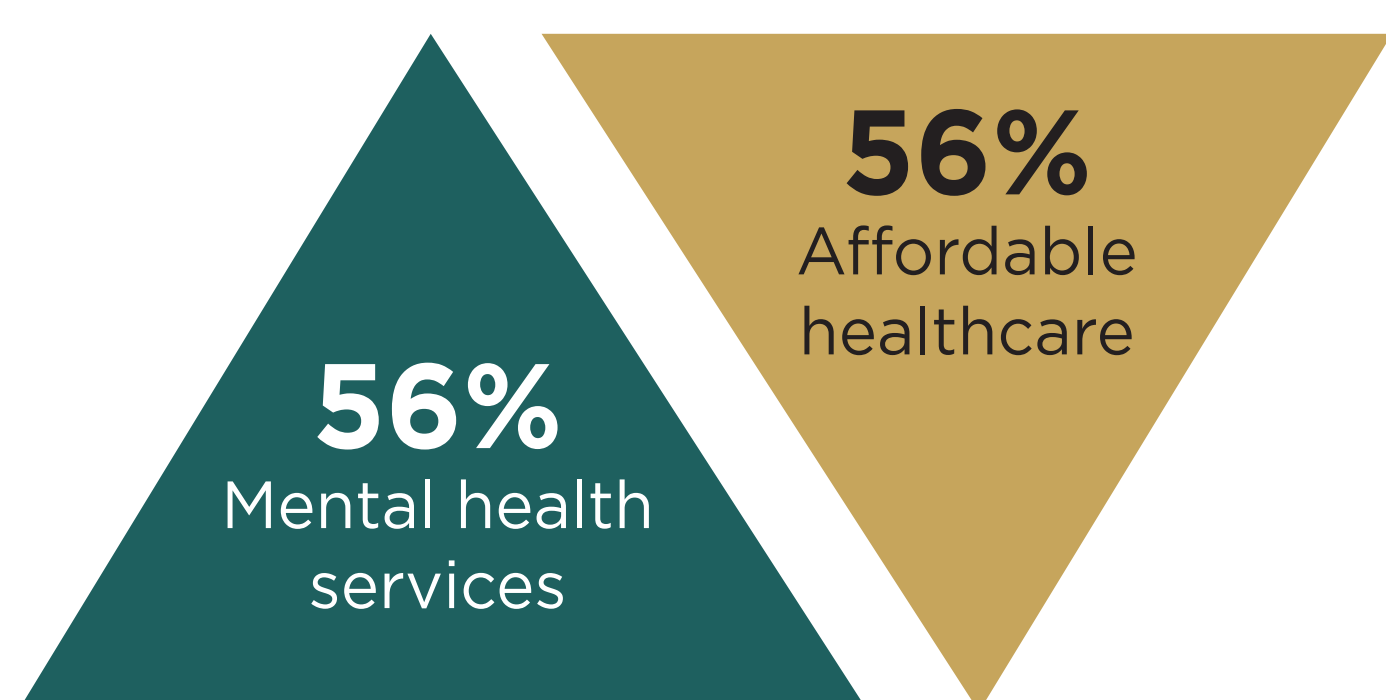
3 What are your biggest concerns for the future of the county?



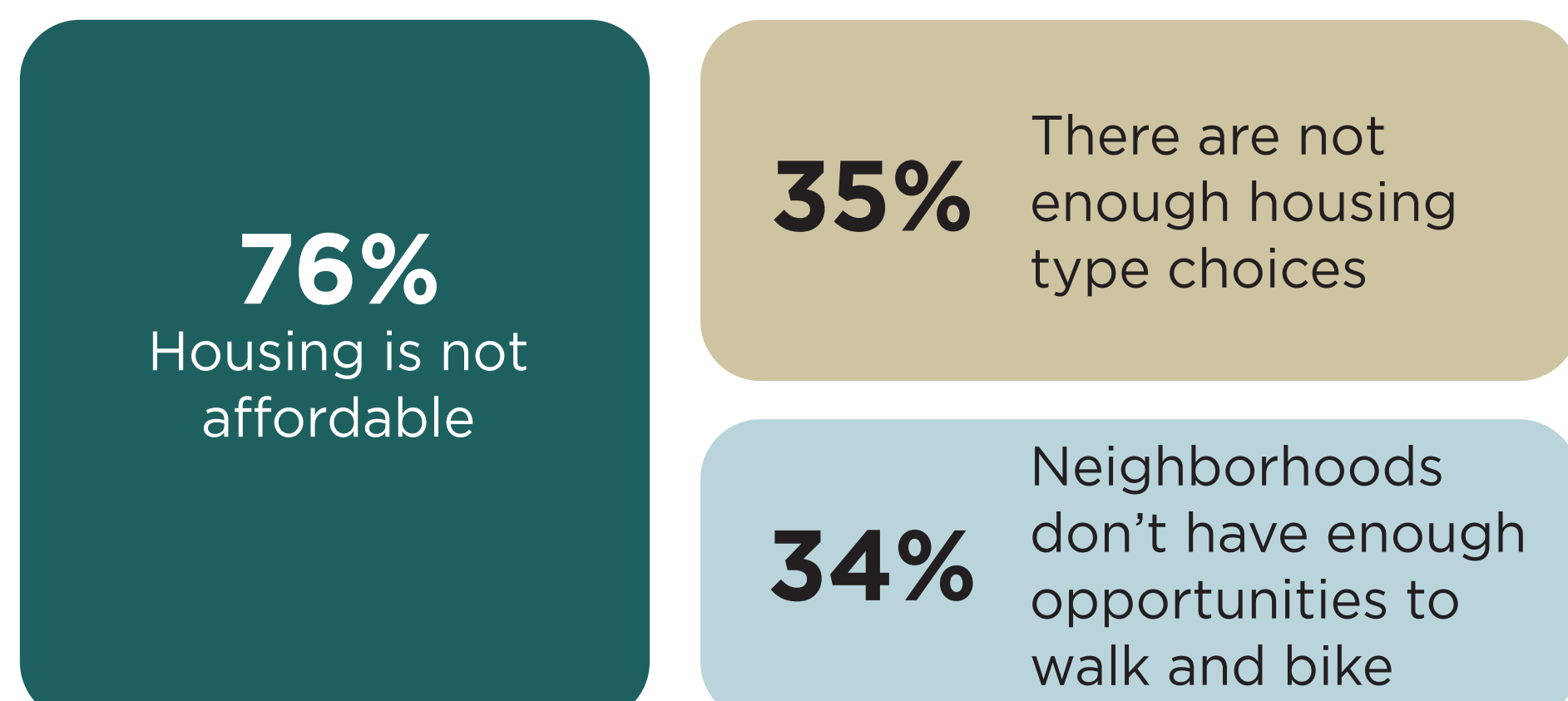
4 What is most needed for you and your family to succeed and have a healthy life?



5 What should be the County's priority for assisting residents with health and social service needs?



6 What are your biggest concerns for housing in Buncombe County?





ENVIRONMENT RECREATION SUSTAINABILITY

We asked...

questions about the environment, recreation, and sustainability. Below are the top responses.

1 What are the top needs for parks and recreation facilities?

57%

Greenways and trails



38%

Nature centers, nature preserves, botanical gardens, and open space



30%

Smaller neighborhood parks close to home



2 What are the most important needs for protecting land and water in the future?

65%

Protect the County's environment (air, water, soil, etc.)

62%

Ensure water sources are clean

49%

Protect working lands (farms and forests)

46%

Protect views of undeveloped mountains and rural areas

3 What should be the County's priorities for creating a more sustainable future for its people and businesses?

46%

Support development of housing affordable for all residents and local workers

40%

More biking and walking options (sidewalks, trails, greenways, and bike paths)

33%

Help bring higher paying businesses and jobs to the County

26%

Reduce the community's carbon footprint (reducing carbon pollution)

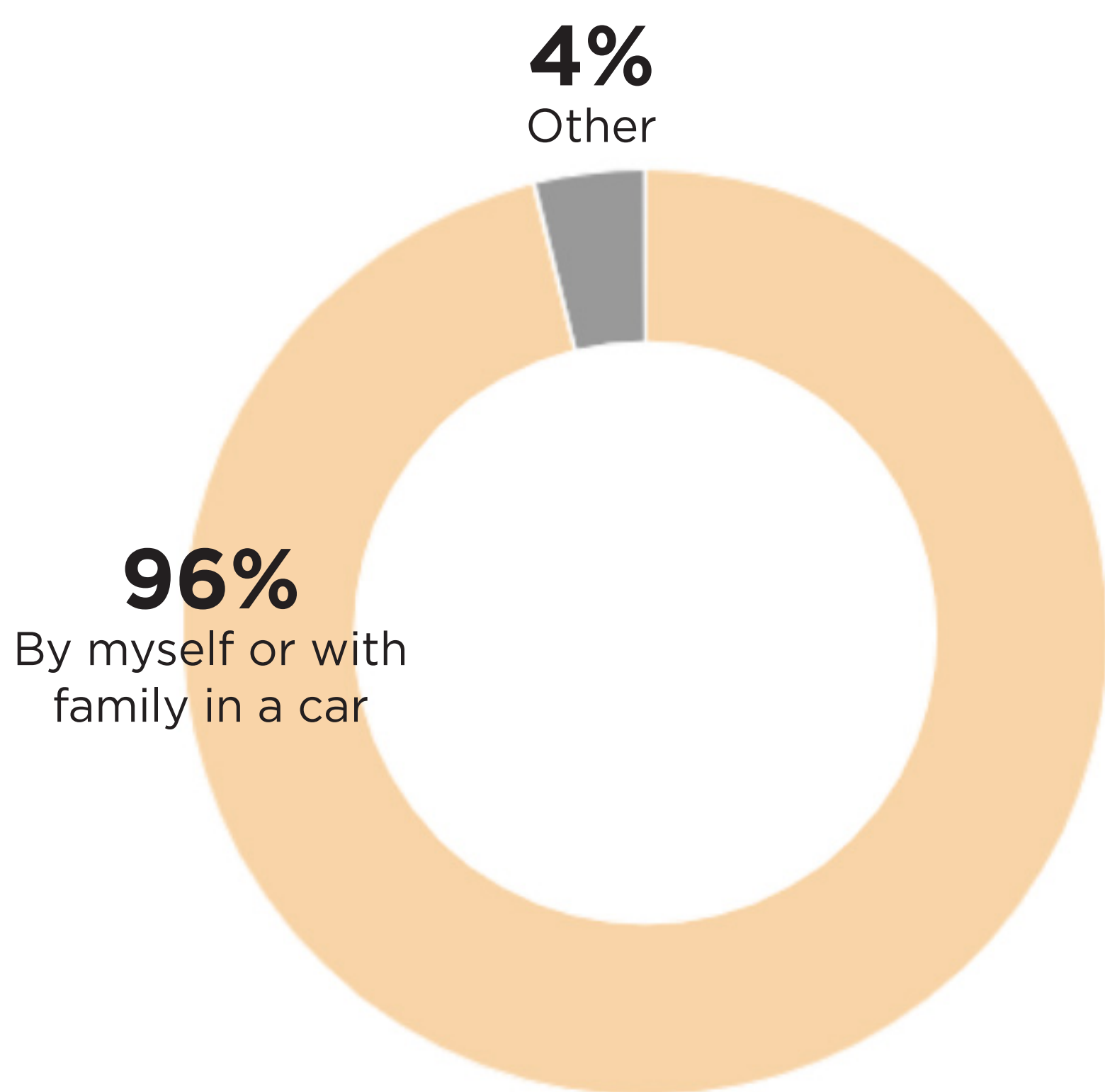


TRANSPORTATION

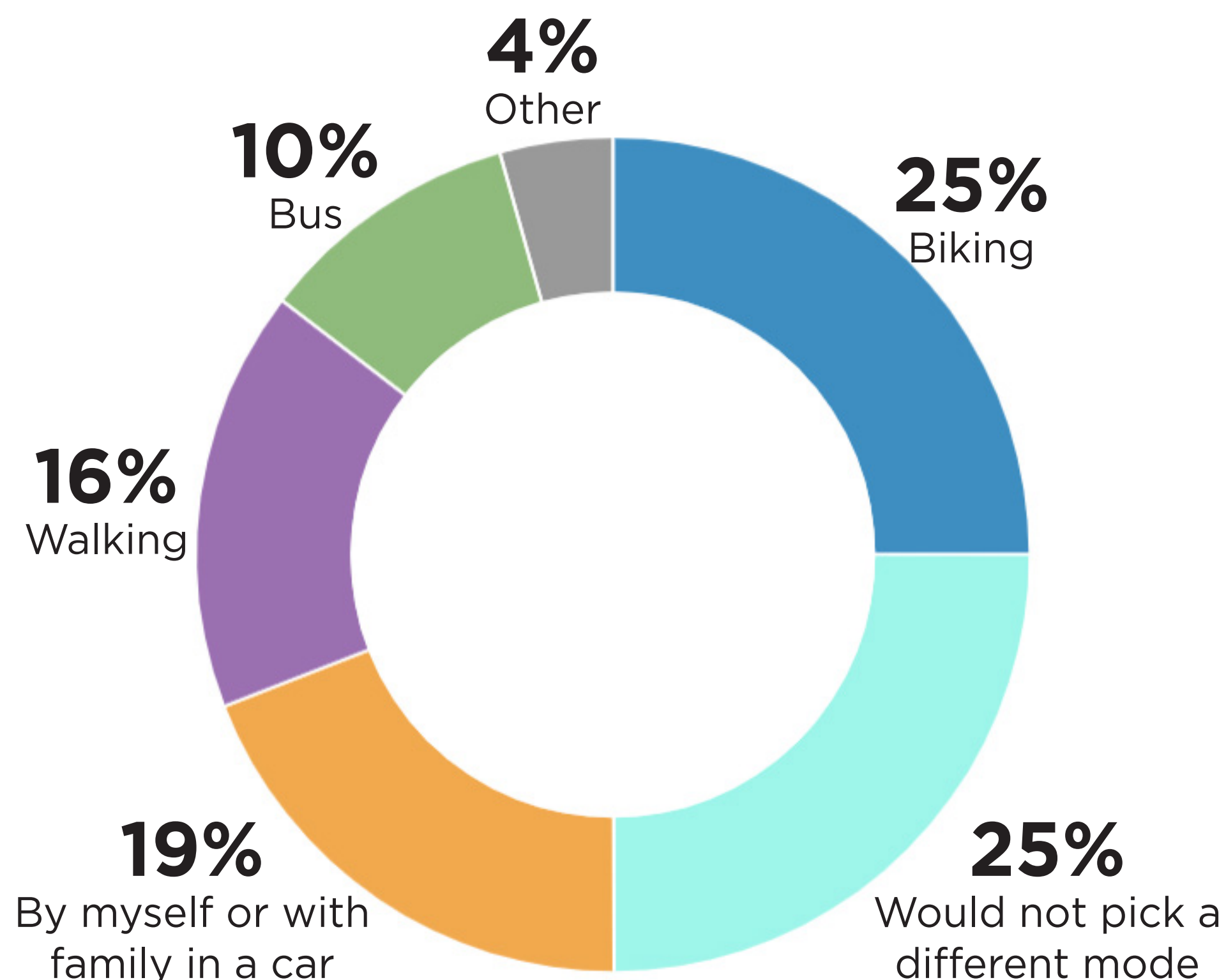
We asked...

questions about transportation in Buncombe. Below are the top responses.

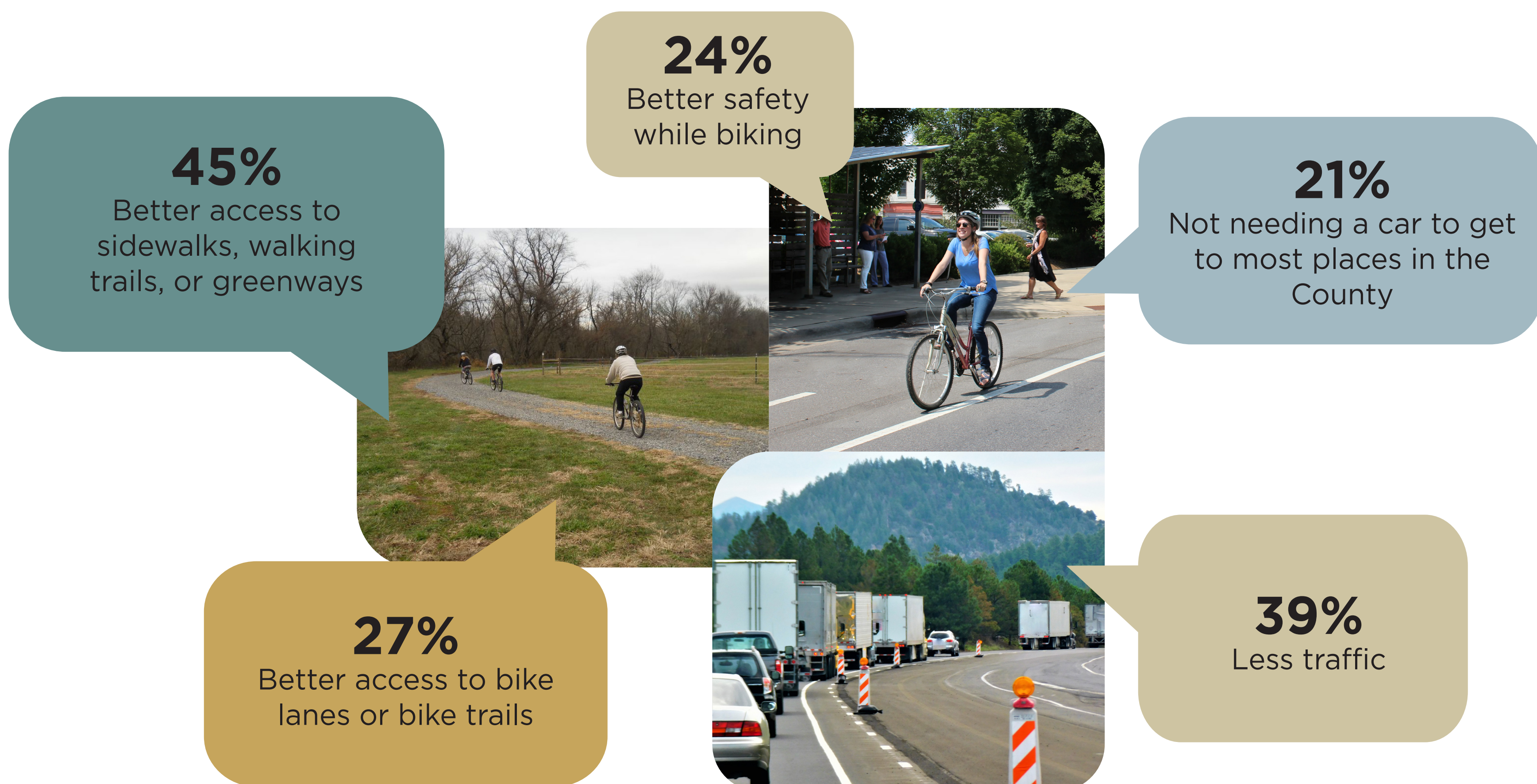
1 How do you travel to most places in the County today?



2 If you could choose a different option, how would you prefer to travel to places in the future?



3 What are your biggest transportation needs and wants for the future?





ECONOMIC DEVELOPMENT & UPWARD MOBILITY

We asked...

questions about economic development and upward mobility. Below are the top responses.

1 As we look to the next 20 years, where do you want the County to grow?

67%
Areas with access to infrastructure AND ARE AWAY from environmentally sensitive areas



47%
Areas with access to infrastructure AND ARE AWAY from working lands (farms and forests)



53%
Adding more development to areas that already have it



2 How should the county support workers and development of new jobs?

12%
Increase employment opportunities for historically disadvantaged or marginalized populations

12%
Make it easier for businesses to move to Buncombe County

12%
Increase number of trained workers in the community by providing more affordable housing options

12%
Support entrepreneurship and small business development

3 What are the most important benefits that tourism brings to residents of Buncombe County?

30%
Creates job or income opportunities for local residents and supports local businesses

21%
Generates tax revenues for funding facilities that benefit both residents and visitors

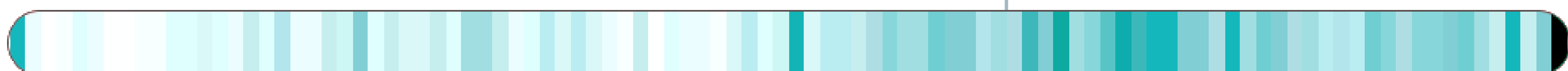
4 If you are concerned about the growth of tourism in the County, what are your biggest concerns?

55%
Housing costs will continue to increase and make it hard for residents to afford to stay

48%
More housing will be used for second homes and vacation rentals leaving fewer options for year-round residents

5 Using the scale below, indicate your level of concern about the growth of tourism in Buncombe County.

64/100
Average



Not at all concerned

Very concerned