



**SECONDARY ROAD
CONSTRUCTION PROGRAM
DIVISION 13 – DISTRICT 2
FISCAL YEAR 2013-2014**



STATE OF NORTH CAROLINA
DEPARTMENT OF TRANSPORTATION

PAT MCCRORY
GOVERNOR

ANTHONY J. TATA
SECRETARY

April 12, 2013

The Honorable David Gantt, Chairman
Buncombe County Board of Commissioners
200 College Street, Suite 326
Asheville, North Carolina 28801

SUBJECT: Secondary Roads Improvement Program
Buncombe County
Fiscal Year 2013 - 2014

Dear Chairman Gantt:

This public hearing is being held in compliance with General Statute 136-44.8 and in accordance with directives established by the North Carolina Board of Transportation. The attached proposals consider the overall county needs and outline the expenditure of estimated Secondary Roads Improvement Funds for Buncombe County for the period of July 1, 2013 through June 30, 2014.

We wish to point out that the available funds for Secondary Roads Improvements are anticipated funds only. The program as presented is dependent upon actual amounts received. Final funds could result in adjustments up or down in the program. You will receive an annual statement showing actual expenditure of funds in accordance with General Statute 136-44.9.

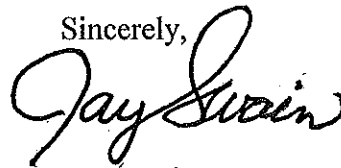
Also, the amount used in the cost of each of these priorities is an estimate and is subject to variations due to inflation, cost of materials, equipment rate changes, etc. In addition, the improvement of each road on the program is subject to the continuing availability of funding, right of way, and environmental review.

In the event right of way for any of the roads listed is not available, it is our plan to proceed with the next priority. You have previously been provided the ratings of all the unpaved roads, which will be followed in the order shown until right of way is acquired and allocated funds are expended.

The Honorable David Gantt
Page Two
April 12, 2013

We appreciate the opportunity to meet with you, the Board and the public to present this program. Recommended deviations from this submission by the Board of Commissioners must be in compliance with General Statute 136-44.8. We are attaching a copy of this General Statute and General Statute 136-44.7 for your ready reference.

If we can provide further information or assistance please let me know.

Sincerely,


J. J. Swain, Jr., P.E.
Division Engineer

JJS/pl

Attachments

**North Carolina Department of Transportation
Secondary Roads Construction Program
Buncombe County**

FY 2013-2014 Anticipated Allocation

Highway Fund	\$424,000
Trust Fund	\$562,525
Unexpended Balance	\$390,000
Total	\$1,376,525

I. Paving Unpaved Roads **Programmed Paving Goal: 0.34 Miles**

A. Rural Paving Priority (None Available – Rural Program Completed)

<u>Priority Number</u>	<u>SR No.</u>	<u>Length (Miles)</u>	<u>Road Name and Description</u>	<u>Est. Cost</u>
1	1291	0.07	Grooms Rd Ext From EOP to EOM	\$50,000

Total Miles: 0.07

Subtotal: \$50,000

B. Subdivision Paving Priority

<u>Priority Number</u>	<u>SR No.</u>	<u>Length (Miles)</u>	<u>Road Name and Description</u>	<u>Est. Cost</u>
1	2545	0.10	Scenic View Ext. From EOP to EOM	\$50,000
2	3388	0.17	Dogwood Dr. (Arden) From SR-2750 to EOM	\$85,000

Total Miles: 0.34

Subtotal: \$135,000

C. Paving of Constructed Roads

<u>SR No.</u>	<u>Length (Miles)</u>	<u>Road Name and Description</u>	<u>Est. Cost</u>
2157	0.35	Loven	\$10,500
2156	0.30	Cheek	\$10,000
2112	0.40	Benfield	\$12,000
2422	0.15	Willhide	\$4,500
2784	0.77	Spring Mtn	\$23,100
1213	0.23	Old Trull	\$6,900

Total Miles 2.2

Subtotal \$ 57,000

**LIST OF ROADS WITH UNAVAILABLE RIGHT OF WAY
2013-2014**

Buncombe County

RURAL ROADS

Priority	SR Number	Name	Length	Homes	ADT	Year on Hold
1	3133	Sharon Church Road	0.27	27	292	1997
2	1220A	Dogwood/Potato Gap Road	0.25	31	382	1997
3	2160	Sugar Creek Road	0.38	12	301	1997
4	2049	Patton Mountain Road	1.75	20	223	1997
5	1131	George's Branch	0.75	29	250	1997
6	2520	Rainbow Terrace Road	1.01	17	276	1998
7	3142	Brush Creek Loop	0.34	26	161	1998
8	3132	Bob Barnwell	1.26	22	137	1999
9	1256	Cheese (Propest) Road	0.36	8	48	1999
10	2053	Webb Cove Road	1.98	26	172	2000
11	2042	Vance Gap Road	1.10	11	183	2000
12	3485	Ball Gap	0.71	1	154	2000
13	3488	Avondale Circle	0.93	8	112	2000
14	1399	Robinson Cove Road	0.16	3	18	2001
15	2178	Stoney Fork Road	0.88	14	84	2003
16	1731	Ayers Road	0.53	10	90	2004
17	2789	Sand Branch	2.20	15	86	2004
18	2098	Herron Cove	1.16	8	86	2004
19	1376	Clark Branch	0.37	16	96	2004
20	1402	Worley Cove	0.96	8	114	2004
21	1747	Kukendall	0.79	9	65	2004
22	2705	Ridge Crest Baptist	0.15	7	42	2005
23	2797	Rock Creek	0.80	2	67	2005
24	1392	Sandy Mush-Garrett	0.87	8	50	2006
25	2788	Crooked Creek	0.90	10	60	2007
26	1628	Griffin Branch	0.74	9	54	2007
27	2027	Martins Creek Road	0.55	8	48	2007
28	2172	Dodd Road	0.63	8	48	2007
29	2130	Dula Springs	0.33	5	60	2007
30	3470	Billy Cove	0.4	2	12	2007
31	3463	Mt. Pisgah Church Road	0.15	3	28	2007
32	1609	Bob Wright Hill	0.4	5	30	2007
33	1632	Cedar Hill	.40	6	36	2008
34	2790	Stroud Valley Rd.	.28	5	30	2008
35	1124	Cole Cove	.35	4	24	2008
36	1293	West Road	.36	4	24	2008
37	2161	Charcoal Road	.41	4	24	2008
38	1624	Sluder Road	.60	3	18	2009
39	2787	Wilkey Church Road	.10	0		2009
40	3520	Plott Road	.09	4	28	2011

SUBDIVISION RESIDENTIAL ROADS

Priority	SR Number	Name	Length	Homes	ADT	Year on Hold
1	2744	Burgins Chapel Road	0.13	17	120	1997
2	1136	Gossett Road	0.11	17	102	1997
3	3500	Morris Road	0.13	16	102	1997
4	1127	Miller Road	0.10	12	72	1997
5	3113	No Name	0.10	9	162	1997
6	2718	Last Resort Road	0.09	10	66	1997
7	2093	Barton Road	0.10	11	71	1997
8	2089	Barton Lane Road	0.18	21	126	1997
9	3523A	Ducker Road	0.17	15	110	1997
10	1326	Maplewood Dr.	0.10	8	48	1997
11	2091	Baird Cove	0.21	16	108	1997
12	1250	Barclay Road	0.11	9	54	1997
13	2741	Martin Road	0.06	5	114	1997
14	3441	Moore's Creek	0.29	23	138	1998
15	3112	Edgewood Road	0.20	17	102	1998
16	1317	Arrowood Road	0.20	15	100	1998
17	2090	Fisher Lane	0.17	12	82	1998
18	1360	Powers Road	0.33	23	138	1998
19	2445	Wilson Avenue/ Dryad Hill	0.15	12	72	1998
20	1354	Smart Road	0.11	9	54	1998
21	2427	Summer Haven	0.67	32	207	1998
22	1337	Edward Street	0.15	11	66	1998
23	2867	No Name	0.05	4	24	1998
24	2100	Pinnacle Park	0.31	16	194	1998
25	1125	Fowler Town	0.17	12	72	1998
26	3461	Emma's Road	0.15	8	96	1998
27	2111	Ballard Branch Road	0.89	22	260	1998
28	3456	Old Church of God Road	0.25	25	150	1998
29	2712	Camp Branch Road	0.19	15	90	1998
30	2701	Dixon Drive	0.10	3	38	1999
31	3149	Old Concord Road	0.20	13	78	1999
32	3137	Sharon Road	0.44	35	210	1999
33	2430	Old Bee Tree Road	0.10	7	42	1999
34	1201	Ragsdale (Seay) Road	0.37	20	120	1999
35	2795	Stone Mountain Road	0.35	19	114	1999
36	1712	Hillcrest Road	0.07	11	66	1999
37	1100	Chestnut Creek Road	0.25	12	96	1999
38	1362	Massey Road	0.11	7	42	1999
39	3154	Old Concord Road	0.18	9	64	1999
40	2534	Pine Street	0.38	21	123	2000
41	1370	Bob Willis Road	0.13	8	48	2000
42	2478	Walker Town	0.89	32	192	2000
43	2146	Gentry Branch	0.66	27	162	2000
44	1209	English Cathy Road	0.16	3	132	2000
45	3185	Rathfarnham Circle	0.32	12	159	2000
46	1269	Baker Road	0.10	6	36	2000
47	2835	Hemphill Road	0.10	6	36	2000
48	1365	Parker Drive	0.14	8	48	2000
49	1714	Reynolds Road	0.06	2	17	2000

50	1359	Smith Road	0.30	13	30	2000
51	2706	Turner Circle	0.37	23	99	2001
52	2417	Amcel Road	0.24	12	72	2001
53	2116	McDaris	0.81	26	166	2001
54	2440	Patton Hill	0.14	7	70	2001
55	2476	North Fork	0.41	16	130	2001
56	1303	Frisbee	0.16	13	170	2002
57	2717	High Top Colony	0.98	29	180	2002
58	2532	Moore's Circle	0.19	6	109	2002
59	3462	Boone's Farm	0.19	9	70	2002
60	2025	Cisco	0.15	7	42	2002
61	2783	Rocky Fork	0.65	26	156	2002
62	1213	Old Tull	0.23	13	78	2002
63	1655	Church Road	0.10	6	36	2003
64	2169	Riverview Drive	0.25	11	130	2003
65	2125	Pickens Lane	0.20	9	120	2003
66	1639	Haney	0.50	19	124	2003
67	1102	Davis Chapel	0.45	17	112	2003
68	2742	Martin Road	0.20	9	60	2004
69	2514	Flat Creek Road	0.05	3	18	2004
70	2743	Old Buckeye Cove	0.47	15	110	2004
71	2110	Jump Cove	0.50	16	170	2004
72	1112	Methodist Church	0.11	3	28	2004
73	1387	Kerr	0.45	13	82	2004
74	2462	Grovemont	0.14	4	50	2004
75	2177	Pegg Road	0.37	14	84	2004
76	2112	Ben Field	0.40	7	42	2005
77	1113	Curtis Creek	0.42	16	96	2006
78	3442	Waters Cove	0.50	18	108	2006
79	2720	Maney Lane	0.29	12	72	2006
80	3138	Tweed Nesbit	0.55	12	180	2006
81	3503	Overlook Extension	0.06	6	36	2007
82	2159	Morgan Cove	0.20	9	54	2006
83	2808	Lee Dotson Road	0.54	19	114	2006
84	1216	Hugh Green Road	0.1	6	36	2007
85	1304	Cole Road	0.23	4	24	2007
86	2443	Jenkins Road	0.05	2	12	2007
87	2546	Williams Cove Road	0.15	6	39	2007
88	3130	Merrills Road	0.45	11	72	2007
89	2811	Sugar Hollow Road	0.65	19	116	2007
90	2728	Old Lytle Cove	0.2	6	36	2007
91	2115	Blackberry Inn	.98	25	166	2008

92	2812	Meadow Lane	.20	8	48	2008
93	1386	Sandy River	.30	9	64	2008
94	1105	Brooks Cove	.40	11	76	2009
95	2168	Doc Branch	.78	19	114	2009
96	1361	Nelson Road	.31	10	60	2009
97	1316	Spivey Place	.20	7	42	2009
98	2145	Haven Road	.20	7	42	2009
99	3493	Powder Creek	.25	7	42	2009
100	3451	Hominy Creek	.36	11	66	2009
101	1308	Freedom Farm Road	.30	9	72	2009
102	1292	Brookshire # 2	.25	8	56	2011
103	2131	Britten Cove	.25	8	56	2011
104	3482	Ferry Road	.29	10	70	2012
105	2751	Lyda Road	.10	2	12	2012
106	2708	Shumate Road	.17	4	24	2012
107	3420	Kile Road	.10	2	12	2012
108	3194	Park Court	.05	2	12	2013
109	1630	Snelson Cemetery Road	.50	12	72	2013

SUMMARY

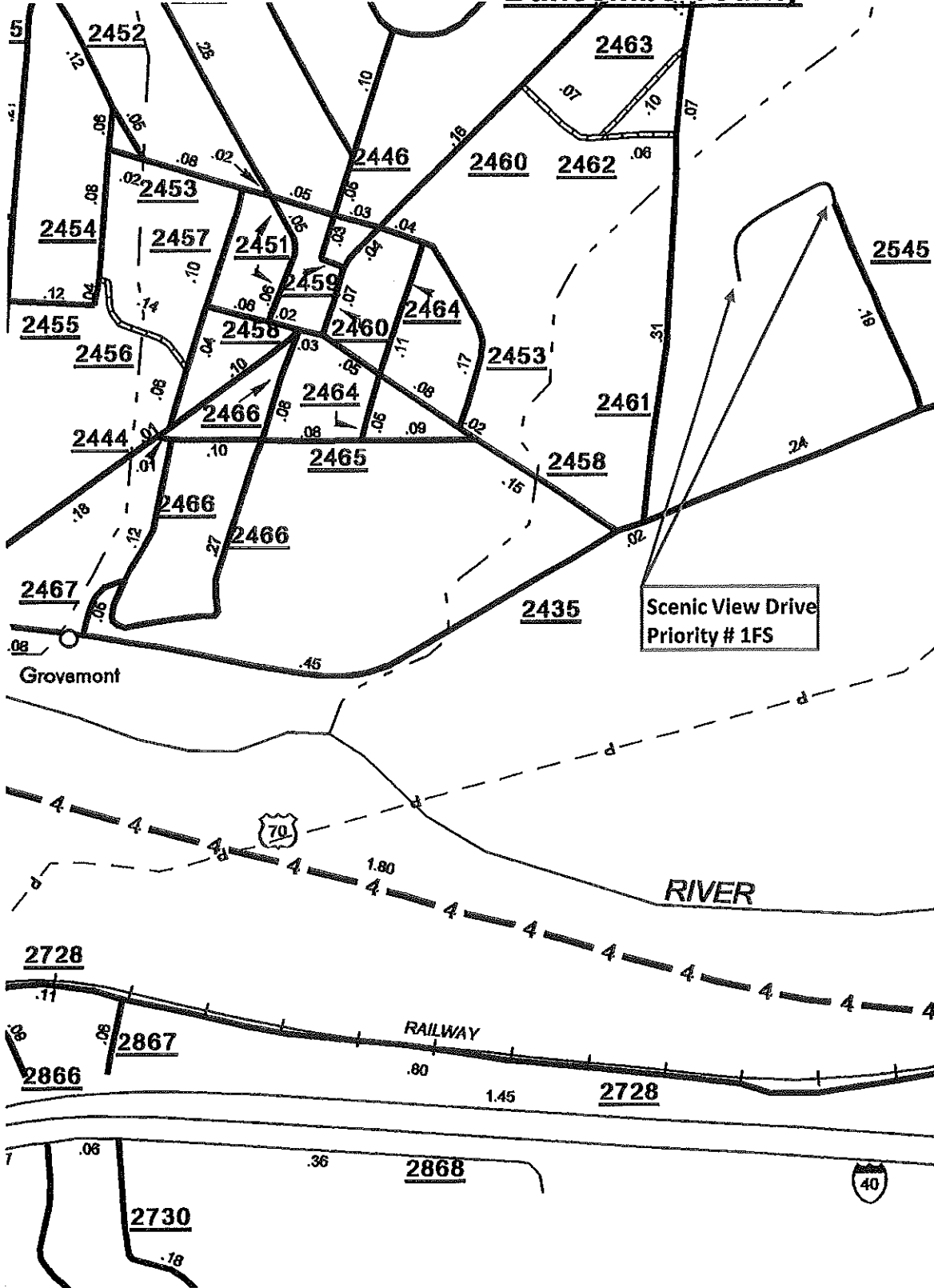
Number of roads on list 149
Total length of roads 57.02

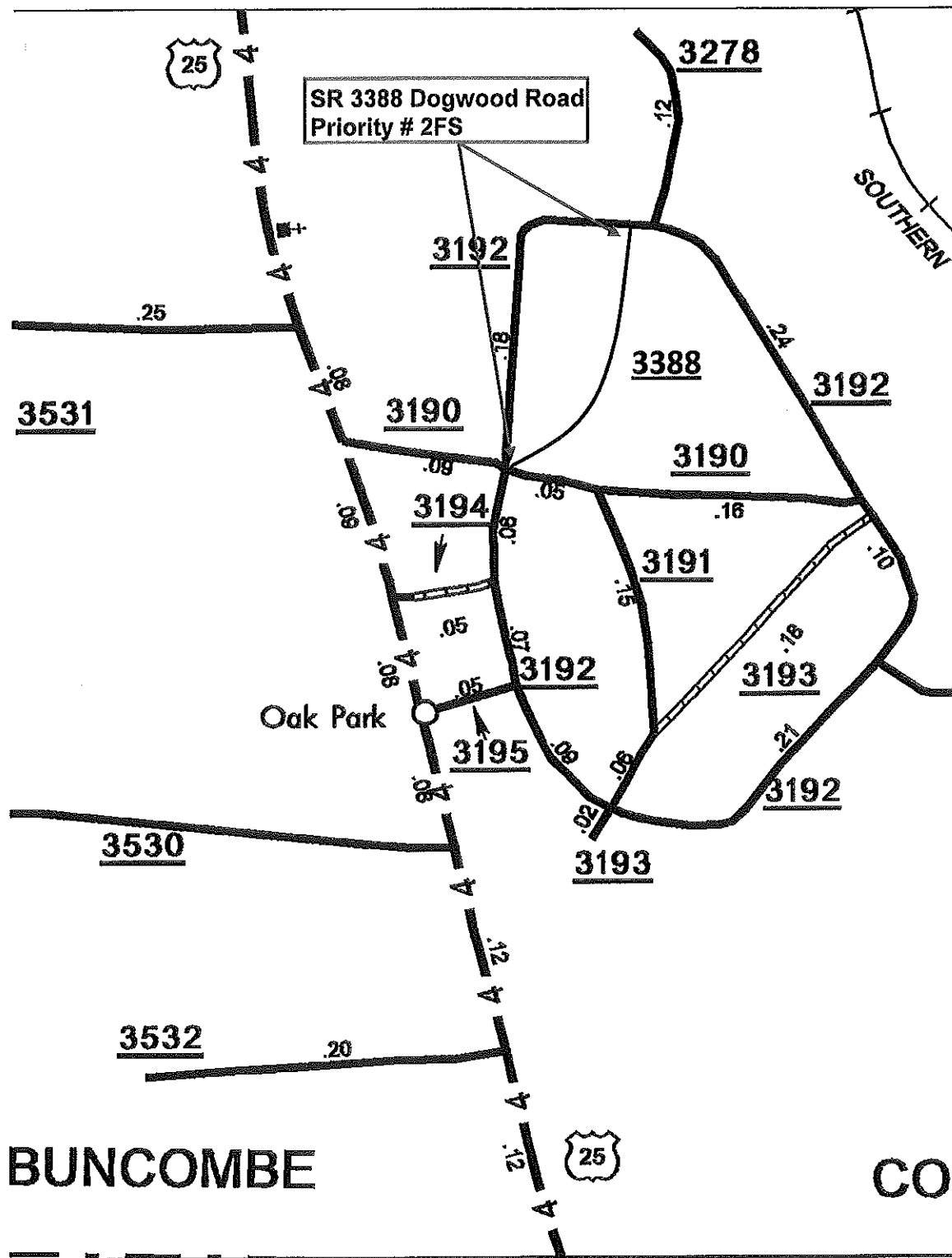
Total length of roads with 50 or more ADT 46.97

Buncombe County
2013-2014 Paving Priority

Subdivision Roads

Buncombe County



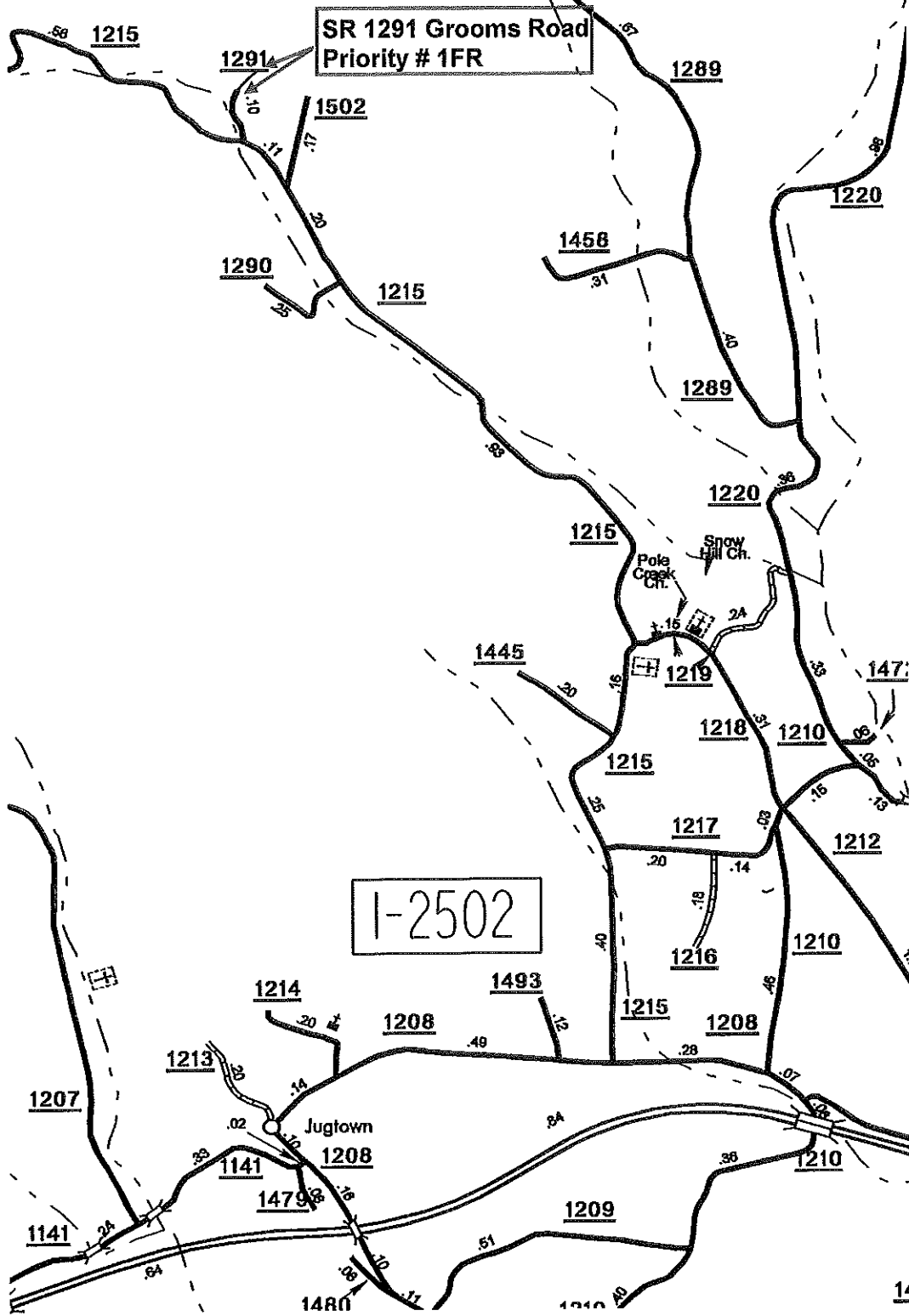


Inset C

Buncombe County
2013-2014 Paving Priority

Rural Roads

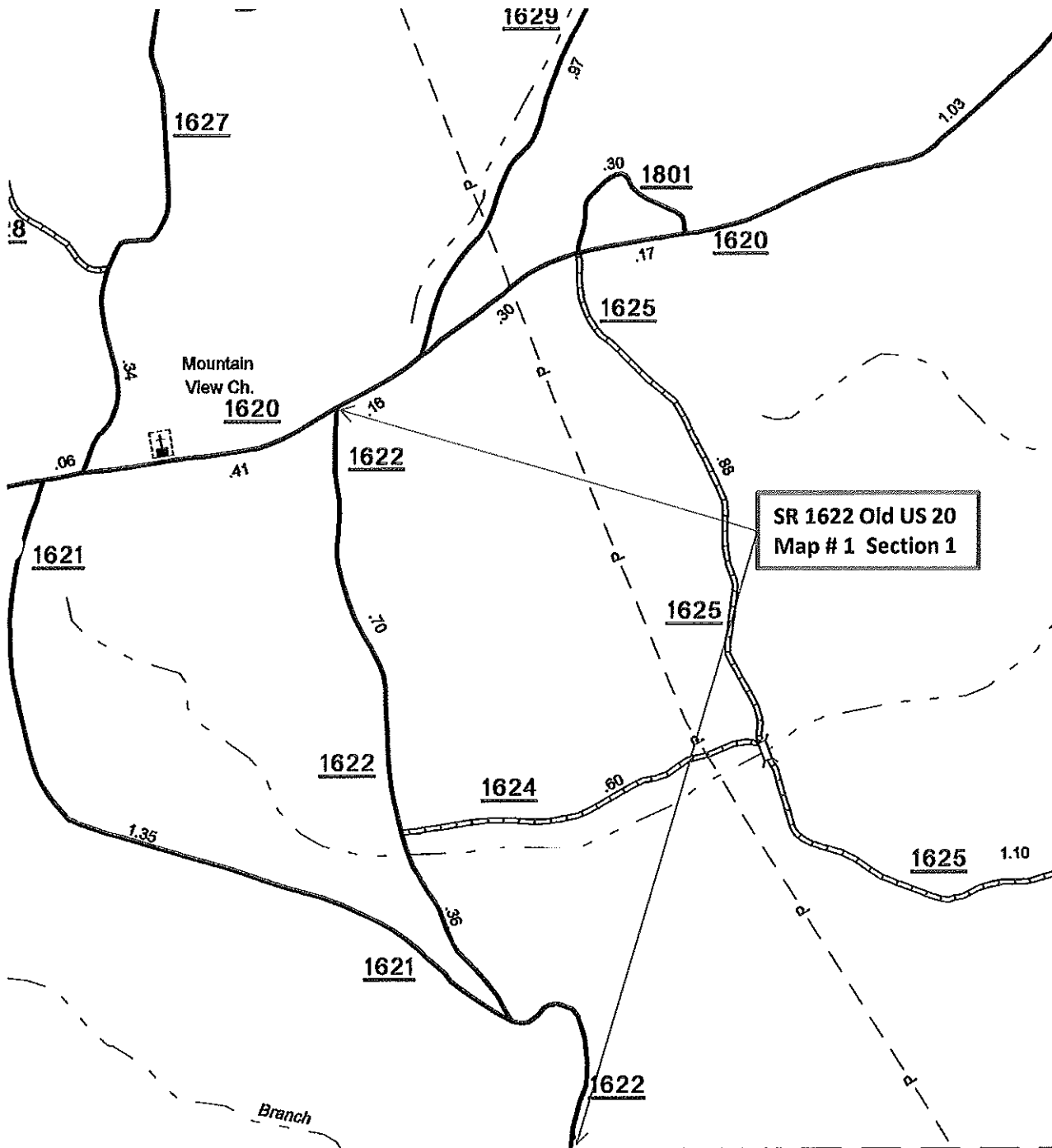
Buncombe County



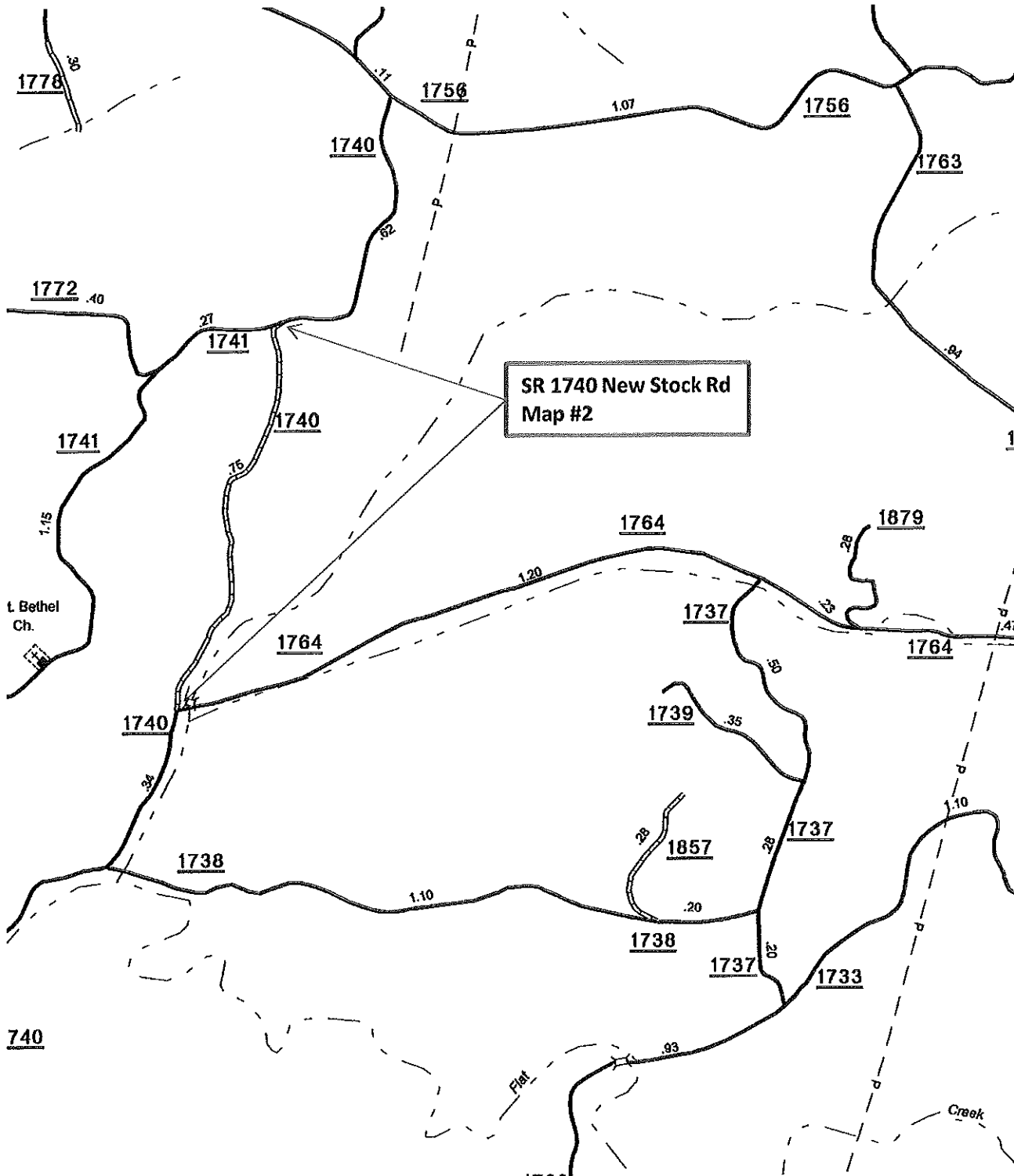
Buncombe County
2013-2014

Paved Road Improvements

Buncombe County

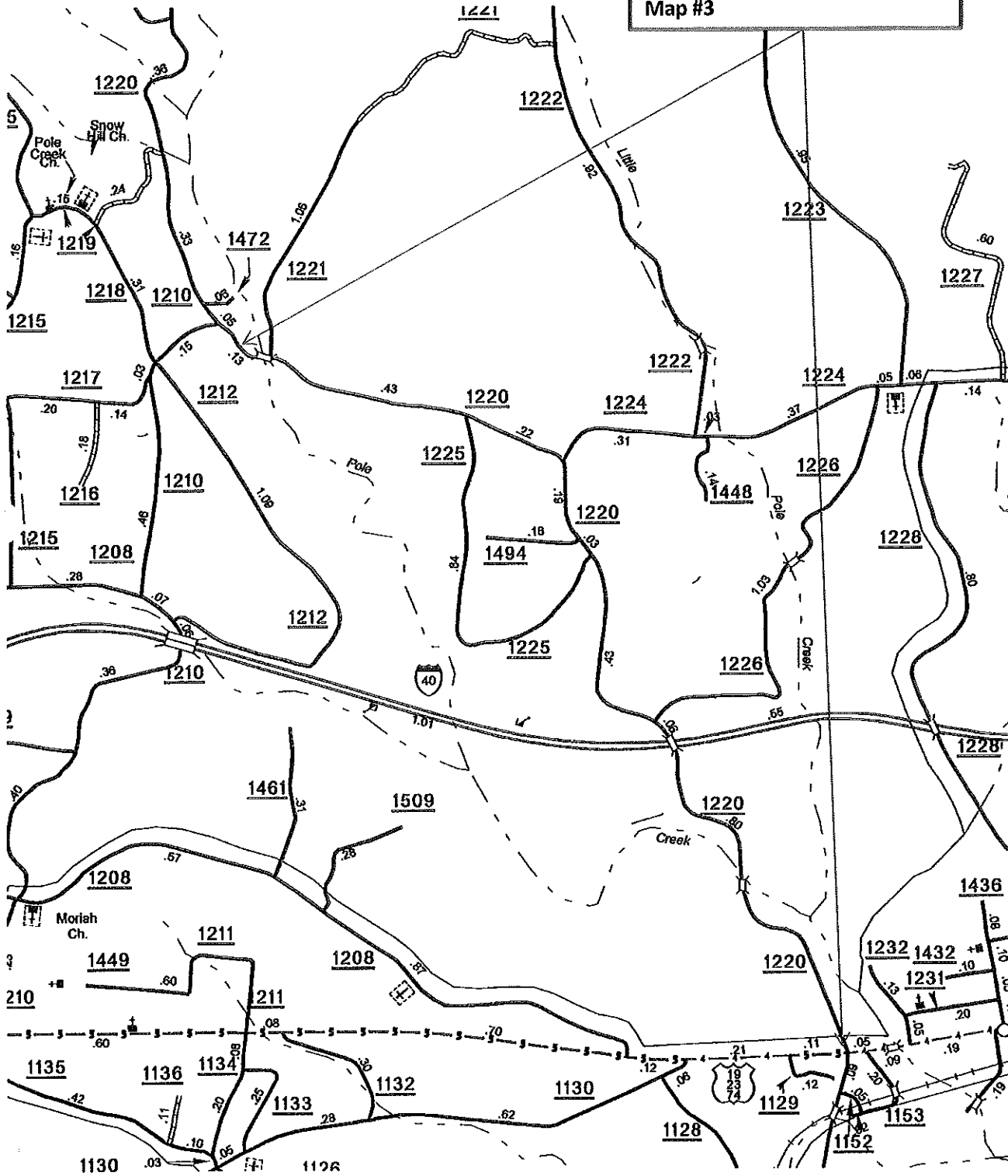


Buncombe County



Buncombe County

SR 1220 Dogwood Road Candler
Map #3



NC GENERAL STATUTES

§ 136-44.7. Secondary roads; annual work program.

(a) The Department of Transportation shall be responsible for developing criteria for improvements and maintenance of secondary roads. The criteria shall be adopted by the Board of Transportation before it shall become effective. The Department of Transportation shall be responsible for developing annual work programs for both construction and maintenance of secondary roads in each county in accordance with criteria developed. It shall reflect the long-range and immediate goals of the Department of Transportation. Projects on the annual construction program for each county shall be rated according to their priority based upon the secondary road criteria and standards which shall be uniform throughout the State. Tentative construction projects and estimated funding shall also be listed in accordance to priority. The annual construction program shall be adopted by the Board of Transportation before it shall become effective.

(b) When a secondary road in a county is listed in the first 10 secondary roads to be paved during a year on a priority list issued by the Department of Transportation under this section, the secondary road cannot be removed from the top 10 of that list or any subsequent list until it is paved. All secondary roads in a county shall be paved, insofar as possible, in the priority order of the list. When a secondary road in the top 10 of that list is removed from the list because it has been paved, the next secondary road on the priority list shall be moved up to the top 10 of that list and shall remain there until it is paved.

(c) When it is necessary for the Department of Transportation to acquire a right-of-way in accordance with (a) and (b) of this section in order to pave a secondary road or undertake a maintenance project, the Department shall negotiate the acquisition of the right-of-way for a period of up to six months. At the end of that period, if one or more property owners have not dedicated the necessary right-of-way and at least seventy-five percent (75%) of the property owners adjacent to the project and the owners of the majority of the road frontage adjacent to the project have dedicated the necessary property for the right-of-way and have provided funds required by Department rule to the Department to cover the costs of condemning the remaining property, the Department shall initiate condemnation proceedings pursuant to Article 9 of this Chapter to acquire the remaining property necessary for the project. (1973, c. 507, s. 3; 1975, c. 716, s. 7; 1977, c. 464, s. 8; 1989, c. 692, s. 1.9; 1991 (Reg. Sess., 1992), c. 900, s. 99; 2001-501, s. 2; 2002-86, s. 1.)

§ 136-44.7A. Submission of secondary roads construction programs to State agencies.

When the Department of Transportation proposes to pave an unpaved secondary road that crosses land controlled by a State agency, the Department of Transportation shall obtain the approval of that State agency before paving that secondary road. (1996, 2nd Ex. Sess., c. 18, s. 19.7.)

§ 136-44.8. Submission of secondary roads construction programs to the Boards of County Commissioners.

(a) The Department of Transportation shall post in the county courthouse a county map showing tentative secondary road paving projects rated according to the priority of each project in accordance with the criteria and standards adopted by the Board of Transportation. The map shall be posted at least two weeks prior to the public meeting of the county commissioners at which the Department of Transportation representatives are to meet and discuss the proposed secondary road construction program for the county as provided in subsection (c).

(b) The Department of Transportation shall provide a notice to the public of the public meeting of the board of county commissioners at which the annual secondary road construction program for the county proposed by the Department is to be presented to the board and other citizens of the county as provided in subsection (c). The notice shall be published in a newspaper published in the county or having a general circulation in the county once a week for two succeeding weeks prior to the meeting. The notice shall also advise that a county map is posted in the courthouse showing tentative secondary road paving projects rated according to the priority of each project.

(c) Representatives of the Department of Transportation shall meet with the board of county commissioners at a regular or special public meeting of the board of county commissioners for each county and present to and discuss with the board of county commissioners and other citizens present, the proposed secondary road construction program for the county. The presentation and discussion shall specifically include the priority rating of each tentative secondary road paving project included in the proposed construction program, according to the criteria and standards adopted by the Board of Transportation.

At the same meeting after the presentation and discussion of the annual secondary road construction program for the county or at a later meeting, the board of county commissioners may (i) concur in the construction program as proposed, or (ii) take no action, or (iii) make recommendations for deviations in the proposed construction program, except as to paving projects and the priority of paving projects for which the board in order to make recommendations for deviations, must vote to consider the matter at a later public meeting as provided in subsection (d).

(d) The board of county commissioners may recommend deviations in the paving projects and the priority of paving projects included in the proposed secondary road construction program only at a public meeting after notice to the public that the board will consider making recommendations for deviations in paving projects and the priority of paving projects included in the proposed annual secondary road construction program. Notice of the public meeting shall be published by the board of county commissioners in a newspaper published in the county or having a general circulation in the county. After discussion by the members of the board of county commissioners and comments and information presented by other citizens of the county, the board of county commissioners may recommend deviations in the paving projects and in the paving priority of secondary road projects included in the proposed secondary road construction program. Any recommendation made by the board of county commissioners for a deviation in the paving projects or in the priority for paving projects in the proposed secondary road construction program shall state the specific reason for each such deviation recommended.

(e) The Board of Transportation shall adopt the annual secondary construction program for each county after having given the board of county commissioners of each county an opportunity to review the proposed construction program and to make recommendations as provided in this section. The Board of Transportation shall consider such recommendations insofar as they are compatible with its general plans, standards, criteria and available funds, but having due regard to development plans of the county and to the maintenance and improvement needs of all existing roads in the county. However, no consideration shall be given to any recommendation by the board of county commissioners for a deviation in the paving projects or in the priority for paving secondary road projects in the proposed construction program that is not made in accordance with subsection (d).

(f) The secondary road construction program adopted by the Board of Transportation shall be followed by the Department of Transportation unless changes are approved by the Board of Transportation and notice of any changes is given the board of county commissioners. The Department of Transportation shall post a copy of the adopted program, including a map showing the secondary road paving projects rated according to the approved priority of each project, at the courthouse, within 10 days of its adoption by the Board of Transportation. The board of county commissioners may petition the Board of Transportation for review of any changes to which it does not consent and the determination of the Board of Transportation shall be final. Upon request, the most recent secondary road construction programs adopted shall be submitted to any member of the General Assembly. The Department of Transportation shall make the annual construction program for each county available to the newspapers having a general circulation in the county. (1973, c. 507, s. 3; 1975, c. 716, s. 7; 1977, c. 464, s. 9; 1981, c. 536.)

§ 136-44.9. Secondary roads; annual statements.

The Department of Transportation shall, before the end of the calendar year, prepare and file with the board of county commissioners a statement setting forth (i) each secondary highway designated by number, located in the county upon which the paving or improvement was made during the calendar year; (ii) the amount expended for improvements of each such secondary highway during the calendar year; and (iii) the nature of such improvements. The Department of Transportation, in its annual report, shall report on each secondary road construction project including the stage of completion and funds expended. The pertinent portion of these reports for each county shall be made available to the board of county commissioners. (1973, c. 507, s. 3; 1975, c. 615; c. 716, s. 7.)

§ 136-44.10. Additions to secondary road system.

The Board of Transportation shall adopt uniform statewide or regional standards and criteria which the Department of Transportation shall follow for additions to the secondary road system. These standards and criteria shall be promulgated and copies made available for free distribution. (1973, c. 507, s. 3; 1975, c. 716, s. 7; 1977, c. 464, ss. 8, 21.)

§ 136-44.11. Right-of-way acquisitions; preliminary engineering annual report.

(a) The Department of Transportation shall include in its annual report projects for which preliminary engineering has been performed more than two years but where there has been no right-of-way acquisition, projects where right-of-way has been acquired more than two years but construction contracts have not been let. The report shall include the year or years in which the preliminary engineering was performed and the cost incurred, the number of right-of-way acquisitions for each project, the dates of the first and last acquisition and the total expenditure for right-of-way acquisition. The report shall include the status of the construction project for which the preliminary engineering was performed or the right-of-way acquired and the reasons for delay, if any.

(b) Requests to the Board of Transportation for allocation of funds for the purchase of right-of-way shall include an estimated time schedule to complete all necessary right-of-way purchases related to a specific project, and a proposed date to award construction contracts for that project. If the anticipated construction contract date is more than two years beyond the estimated completion of the related right-of-way purchases, the approval of both the Board of Transportation and the Director of the Budget is required. (1973, c. 507, s. 3; 1975, c. 716, s. 7; 1981, c. 859, s. 69.)

RESOLUTION

The Board of Commissioners for the County of _____
North Carolina, met in regular session at the _____
in _____ County, the usual place of meeting, at _____ PM,
on _____.

Present:

Absent:

.....

Chairman _____ introduced representatives of
the Department of Transportation and a resolution recommending a program of total
needs for Secondary Road improvements in _____ County.
The attached program details the proposed expenditures of Secondary Road
Construction and Trust Funds for the period _____.

Commissioner _____ moved that the
foregoing resolution and attached program of total needs for Secondary Roads in
_____ County be approved:

Ayes:

Noes:

.....

I, _____ Clerk to the Board
of Commissioners for _____ County, North Carolina,
DO HEREBY CERTIFY that the foregoing is a true copy of so much of the
proceedings of the Board of Commissioners for said County at a meeting held
on _____, as relates in any way to Secondary Road
Construction and Trust Funds for expenditures in said County, and that said
proceedings are recorded in Minute Book _____ of the minutes of said Board,
beginning at Page _____ and ending at Page _____.

Witness my hand and the official seal of said County, this _____ day
of _____, 2013.

Clerk to the Board of Commissioners