

Historic Resources Commission of Asheville and Buncombe County



FY 2014 Program Funding Proposal
Buncombe County Board of Commissioners
February 12, 2013

Historic Resources Commission of Asheville & Buncombe County



- ❧ Joint City/County Commission formed in 1979 through local ordinances
- ❧ Six members appointed by City and six by the County government
- ❧ Successful Cooperative Commission
- ❧ Certified Local Government



HRC Mission



- ❧ Identify and inventory historic properties of architectural or other cultural significance
- ❧ Conduct design review for properties located within the local historic districts



Douglas Ellington House

HRC Mission

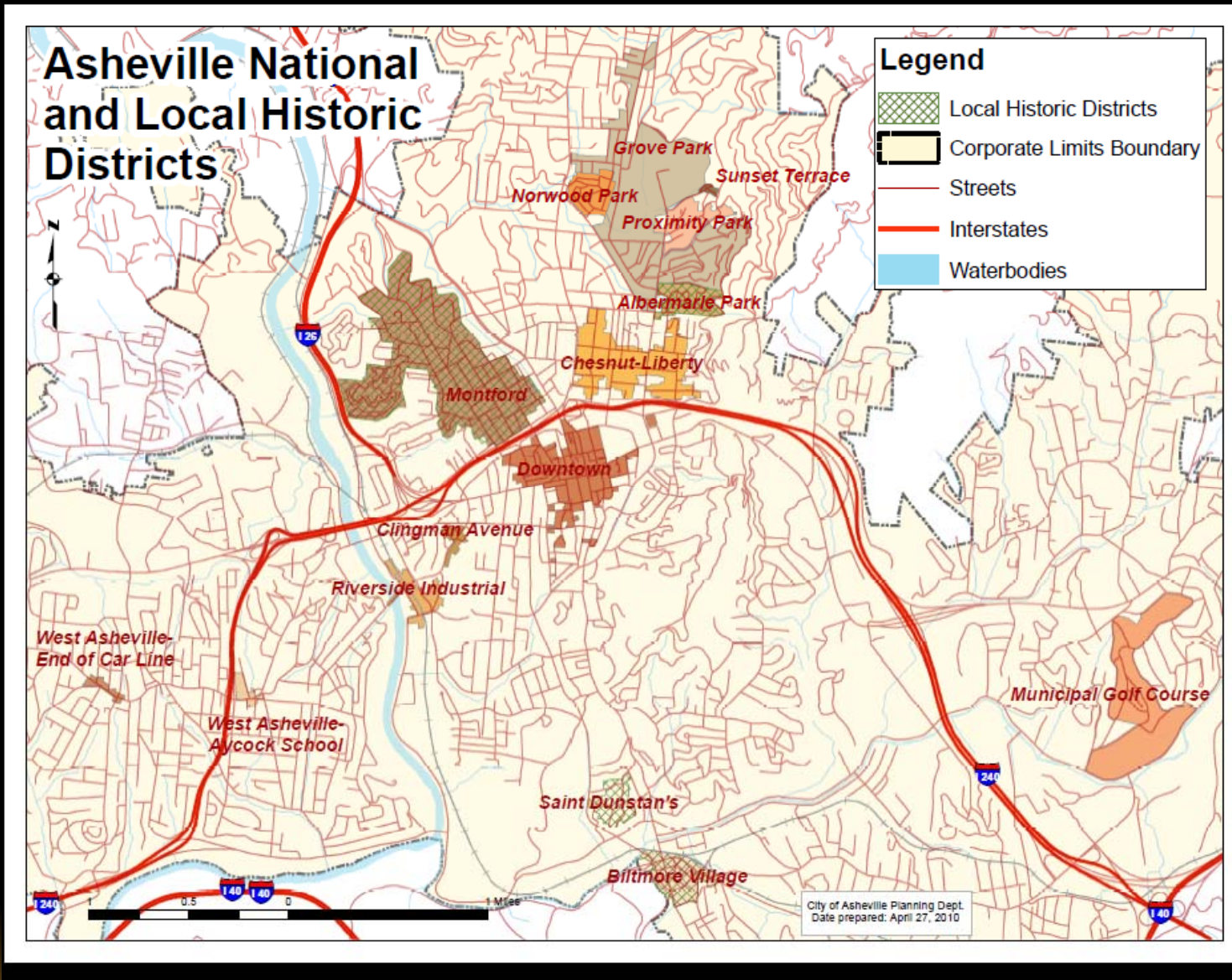


- ❧ Comment on designation of local districts/landmarks and properties to the National Register
- ❧ Adopt and amend guidelines for the local historic districts
- ❧ Conduct educational programs with respect to historic properties and districts



Apartment in Montford

Historic Districts



Landmarks



❧ 47 Local Landmarks

- ❧ 11 Downtown

❧ Buncombe County

- ❧ Richard Sharp Smith House

- ❧ Douglas Ellington House

- ❧ William Nelson Camp Jr. House

- ❧ Carter -Swain House

- ❧ Jacob Weaver House

- ❧ Reynolds Summer House

- ❧ Sondley House

2012 Activities and Accomplishments



- ❧ Certificates of Appropriateness
 - ❧ 101 Minor Work
 - ❧ 42 Major Works
- ❧ Downtown Asheville Historic District Update and Expansion
- ❧ Architectural Survey Update
- ❧ St. Dunstan's Guidelines
- ❧ Memorandum of Agreement on Federal Projects
 - ❧ Eagle Market Place
 - ❧ Oteen Veteran's Hospital
 - ❧ Pack Place

2013 Goals



- ❧ Preservation Plan
- ❧ Albemarle Park Book for Arcadia Press
- ❧ Work with Albemarle Park on Architectural and Landscape Design Guidelines
- ❧ Review and Update Montford District Guidelines
- ❧ Work with County to Secure Dedicated Funding

Previous Buncombe County Funding



Previous Funding

Ɔ	FY91	\$11,900
Ɔ	FY92	\$11,900 (23% of budget)
Ɔ	FY93	\$11,751
Ɔ	FY94	\$11,633
Ɔ	FY96	\$11,243
Ɔ	FY97	\$11,243
Ɔ	FY98	\$11,243
Ɔ	FY99	\$11,243
Ɔ	FY01	\$ 8,432
Ɔ	FY10	\$ 5,000
Ɔ	FY11	\$ 5,000
Ɔ	FY12	\$ 5,000
Ɔ	FY13	\$ 4,500
Ɔ	FY14	\$10,000 (13% of current budget)

Budget



- | | |
|---------------------------|------------------|
| ❧ Current Budget | \$131,172 |
| ❧ County Contribution | \$ 5,000 (4,500) |
| ❧ Asheville General Fund | \$117,747 |
| ❧ Other Revenue Projected | \$ 8,425 |
-
- ❧ CLG Grant Funding on Project by Project Basis
 - ❧ 90% of budget for salaries, taxes and insurance for
1 full time and 1 part time employee
 - ❧ 10% operating costs such as advertising, postage, supplies,
training, phone, materials as required by ordinance

Thank You

