

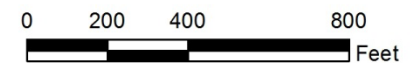
# Jesse Gardner

- Request NS from R-1
- Staff Recommendation:
  - Approval
- Planning Board Recommendation:
  - Approval



## Jesse Gardner Map Amendment

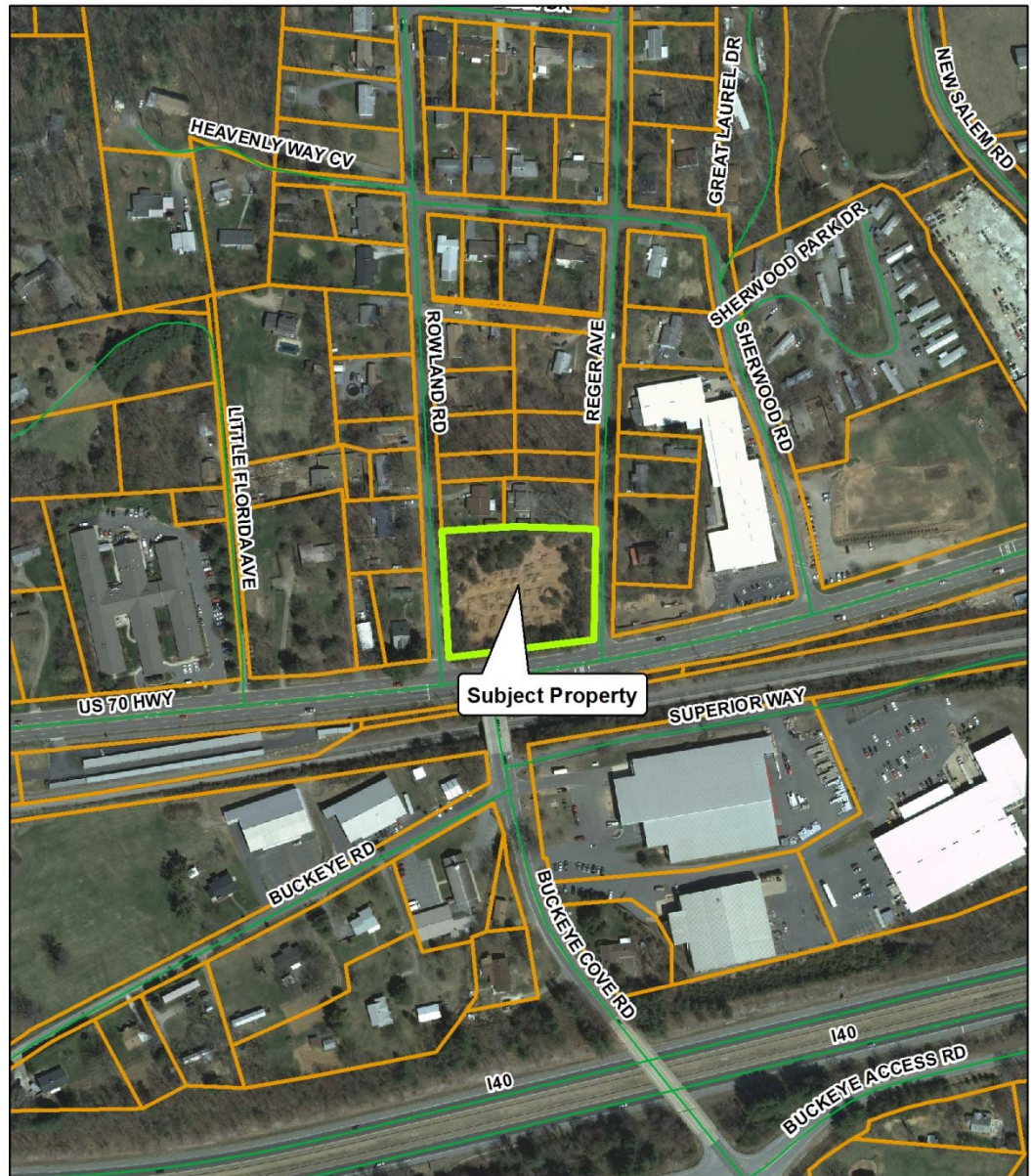
Case Number: ZPH2012-00016  
Property Size: 1.58 acres  
Application Date: August 24, 2012  
Planning Board Hearing Date: October 1, 2012



Created By: Buncombe County Planning  
Date: September 7, 2012

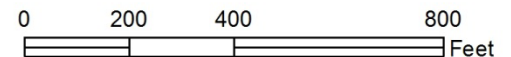
# Jesse Gardner

- Request NS from R-1
- Staff Recommendation:
  - Approval
- Planning Board Recommendation:
  - Approval



## Jesse Gardner Map Amendment

Case Number: ZPH2012-00016  
Property Size: 1.58 acres  
Application Date: August 24, 2012  
Planning Board Hearing Date: October 1, 2012

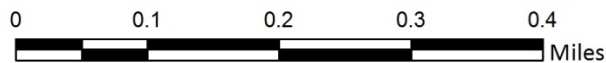
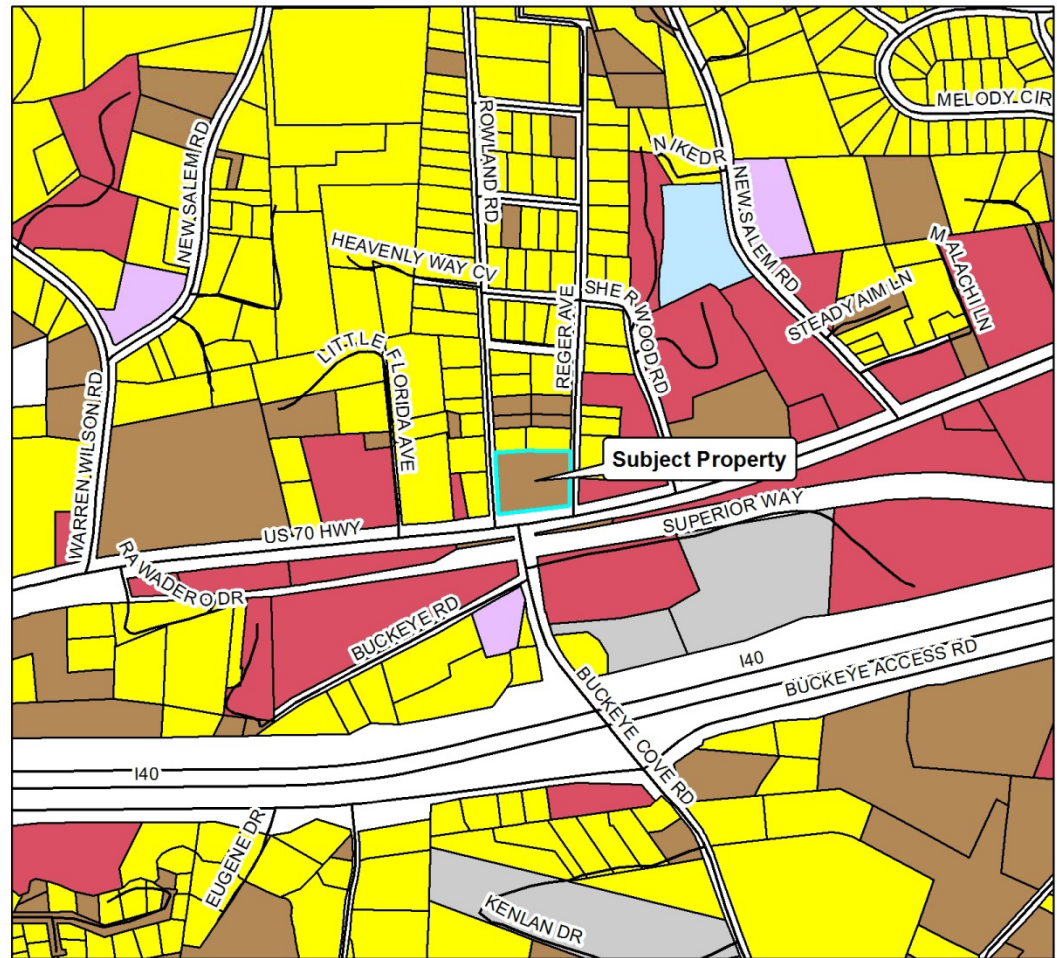


Created By: Buncombe County Planning  
Date: September 7, 2012



# Jesse Gardner

- Request NS from R-1
- Staff Recommendation:
  - Approval
- Planning Board Recommendation:
  - Approval



## Jesse Gardner Map Amendment



Case Number: ZPH2012-000016  
Property Size: 1.58 acres  
Application Date: August 24, 2012  
Planning Board Hearing Date: October 1, 2012

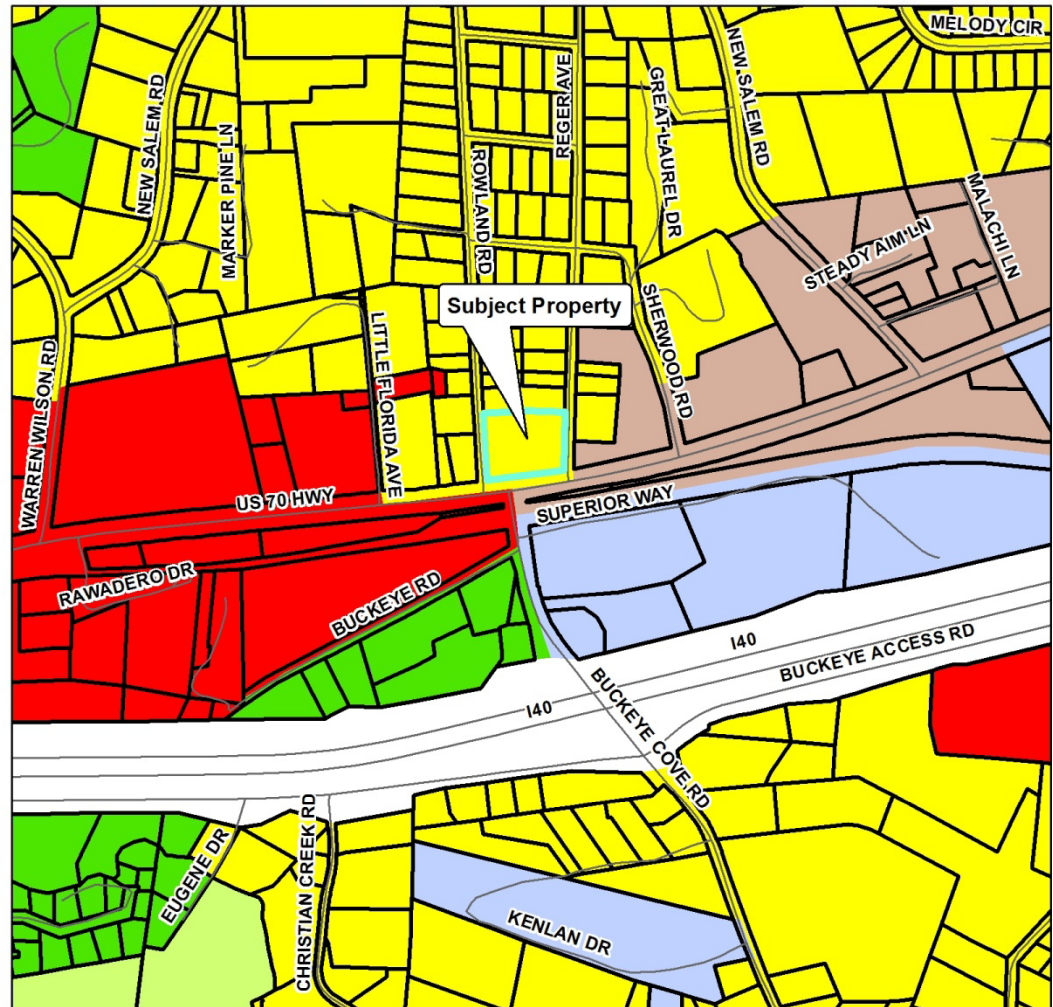
Created By: Buncombe County Planning  
Date: September 7, 2012

### Assessed Use

	Forestry, Conservation, Parks
	Agricultural
	Public Services
	Community Services
	Recreational, Entertainment
	Industry
	Commercial
	Vacant Land
	Residential

# Jesse Gardner

- Request NS from R-1
- Staff Recommendation:
  - Approval
- Planning Board Recommendation:
  - Approval

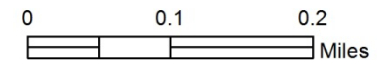


## Jesse Gardner Map Amendment



Zoning Districts		Zoning Overlays			
	BDM		R-1		Blue Ridge Parkway Overlay
	CS		R-2		Protected Ridge Overlay
	EMP		R-3		Protected Ridge & Parkway
	NS		R-LD		Steep Slope/High Elev.
	OU				Steep Slope/High Elev. & Pkwy

Case Number: ZPH2012-00016  
 Property Size: 1.58 acres  
 Application Date: August 24, 2012  
 Planning Board Hearing Date: October 1, 2012



Created By: Buncombe County Planning  
 Date: September 7, 2012