

# Jeanette Bowling

- Request R-1 from R-LD
- Staff Recommendation:
  - Approval
- Planning Board Recommendation:
  - Approval



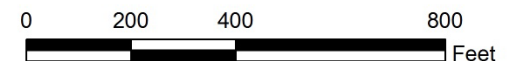
## Jeanette Bowling Map Amendment

Case Number: ZPH2012-00050

Property Size: 0.4 acre portion

Application Date: August 28, 2012

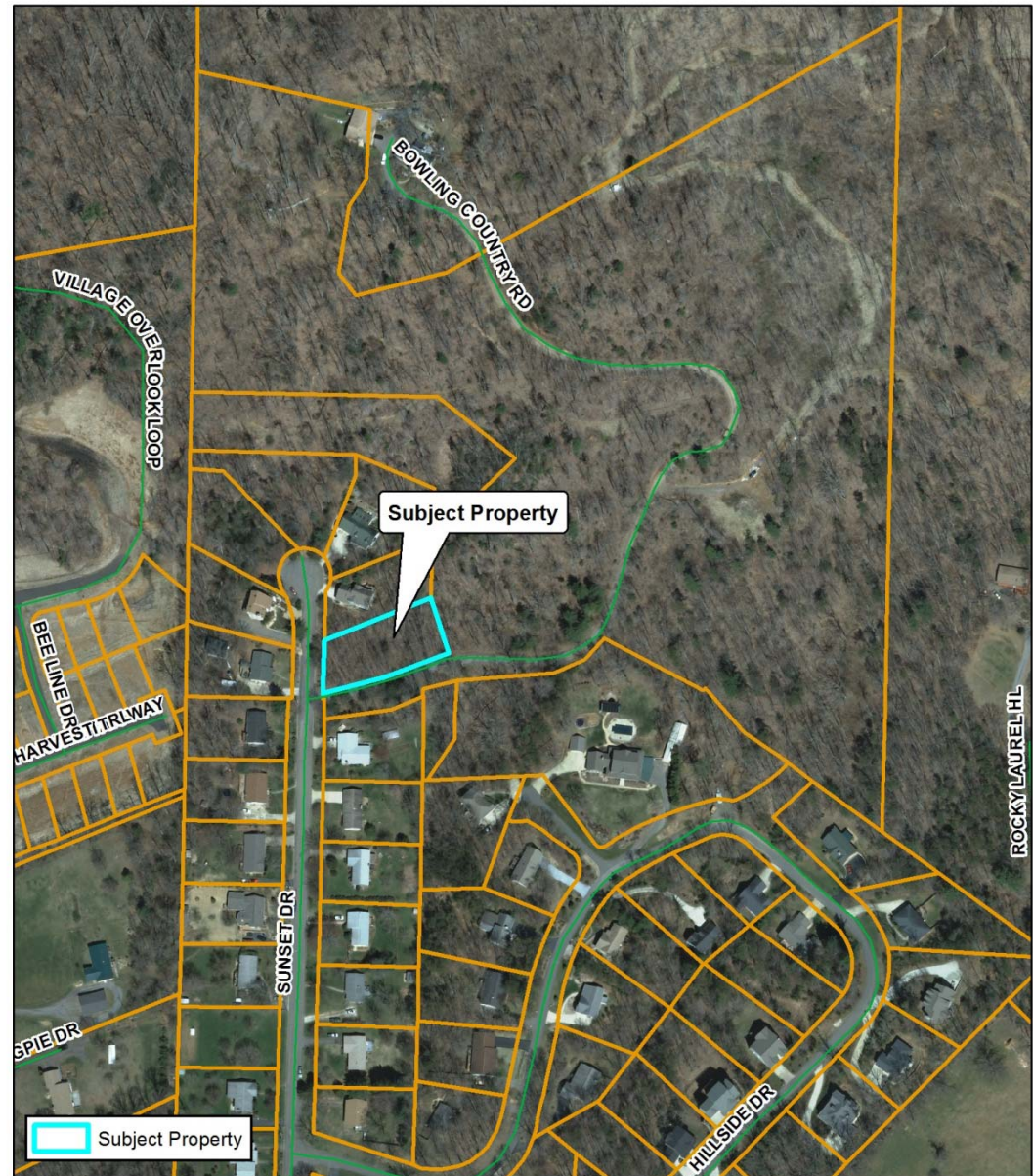
Planning Board Hearing Date: October 1, 2012



Created By: Buncombe County Planning  
Date: September 18, 2012

# Jeanette Bowling

- Request R-1 from R-LD
- Staff Recommendation:
  - Approval
- Planning Board Recommendation:
  - Approval



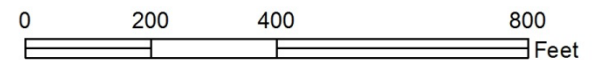
## Jeanette Bowling Map Amendment

Case Number: ZPH2012-00050

Property Size: 0.4 acre portion

Application Date: August 28, 2012

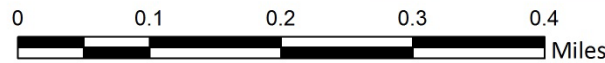
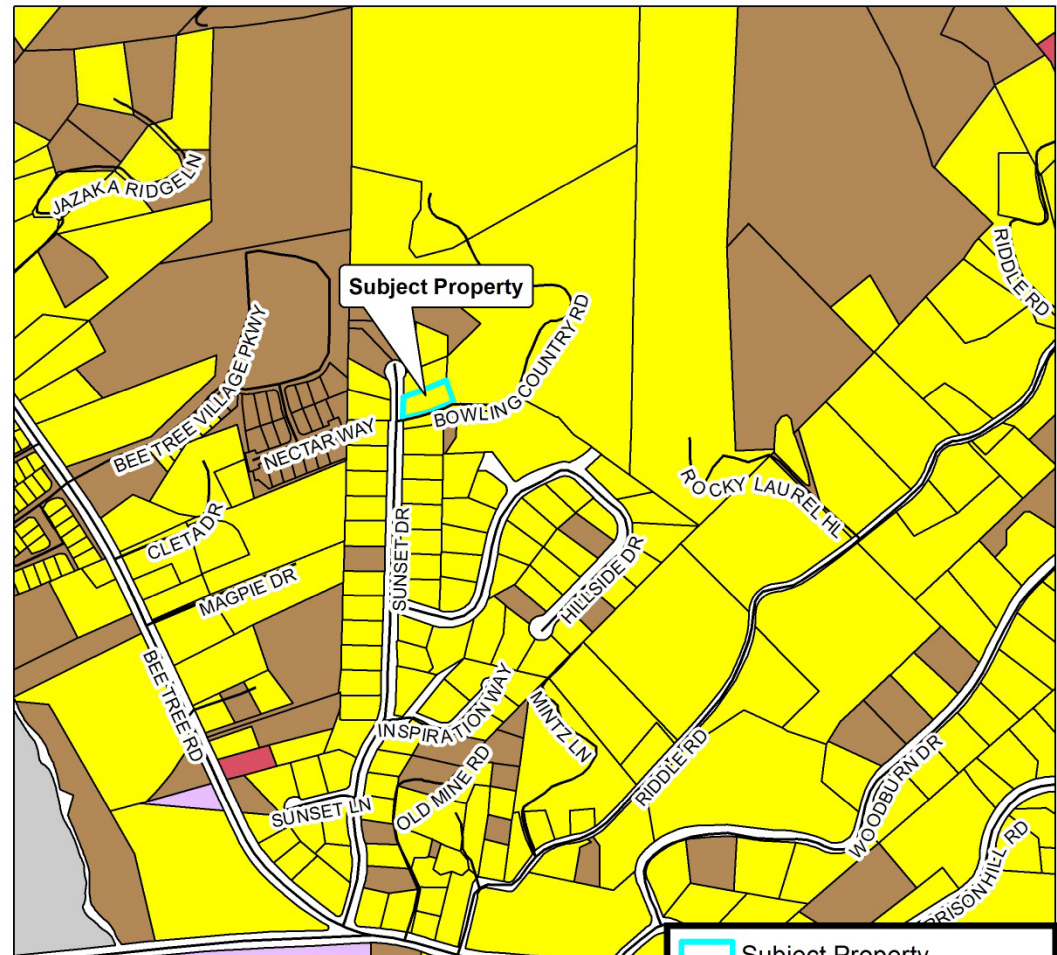
Planning Board Hearing Date: October 1, 2012



Created By: Buncombe County Planning  
Date: September 17, 2012

# Jeanette Bowling

- Request R-1 from R-LD
- Staff Recommendation:
  - Approval
- Planning Board Recommendation:
  - Approval



## Jeanette Bowling Map Amendment



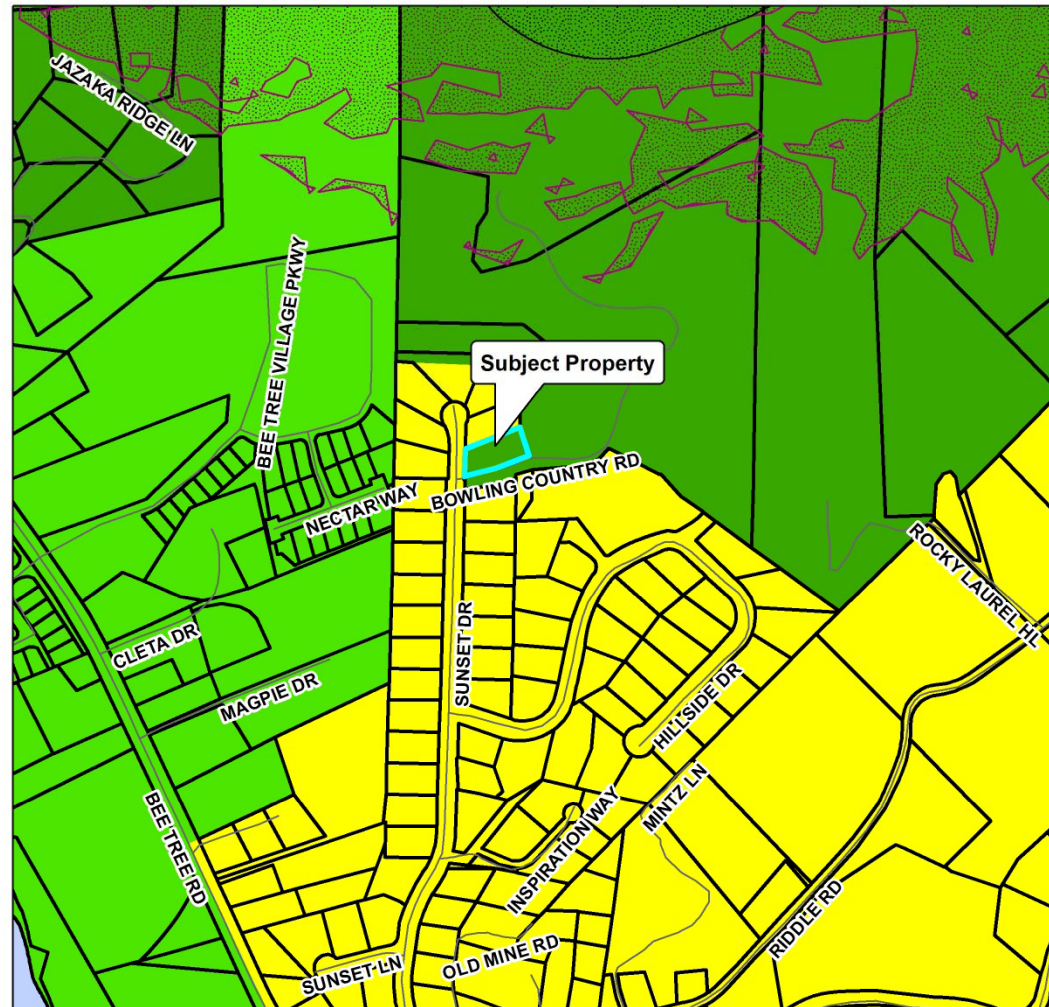
Case Number: ZPH2012-000050  
Property Size: 0.4 acre portion  
Application Date: August 28, 2012  
Planning Board Hearing Date: October 1, 2012

Created By: Buncombe County Planning  
Date: September 18, 2012



# Jeanette Bowling

- Request R-1 from R-LD
- Staff Recommendation:
  - Approval
- Planning Board Recommendation:
  - Approval

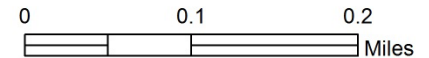


## Jeanette Bowling Map Amendment



Zoning Districts		Zoning Overlays	
BDM	R-1	Blue Ridge Parkway Overlay	R-LD
CS	R-2	Protected Ridge Overlay	R-3
EMP	R-3	Protected Ridge & Parkway	Steep Slope/High Elev.
NS	R-LD	Steep Slope/High Elev. & Pkwy	
OU			

Case Number: ZPH2012-00050  
 Property Size: 0.4 acre portion  
 Application Date: August 28, 2012  
 Planning Board Hearing Date: October 1, 2012



Created By: Buncombe County Planning  
 Date: September 18, 2012