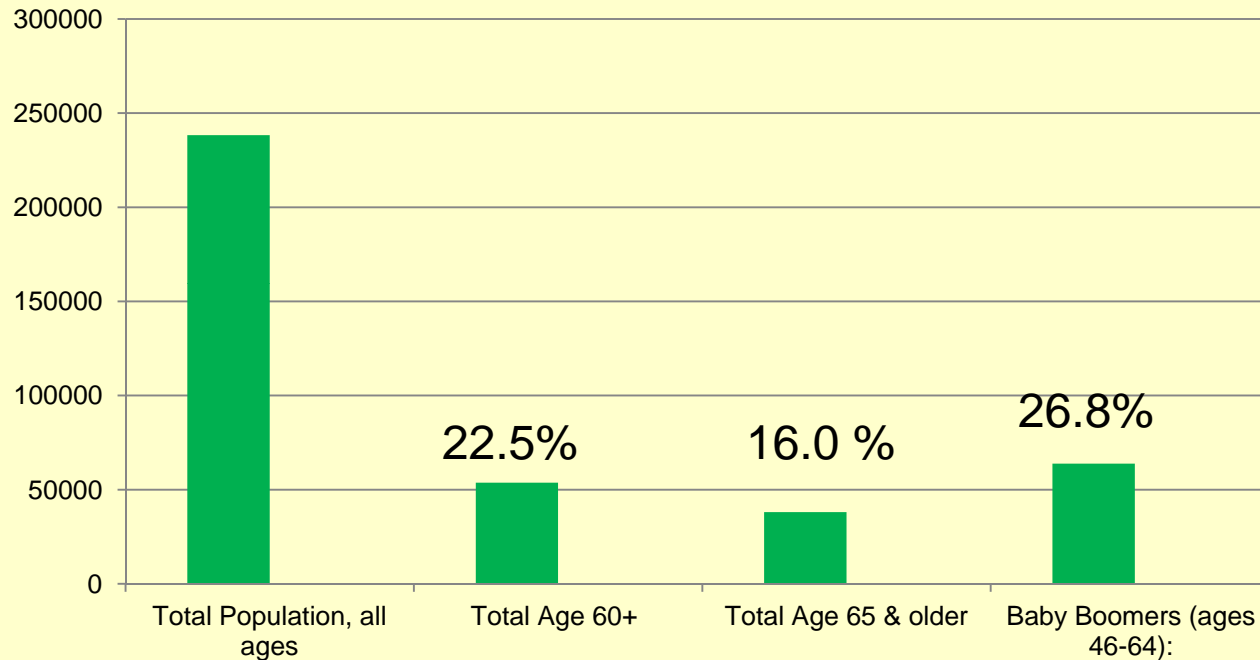




Report on The
Buncombe County
**LIVABLE and
AGING-FRIENDLY
PLAN**
2008-12

Presentation to Buncombe
County Commissioners
May 15, 2012

Older Adult Population in Buncombe County



***42.8% of county residents are either baby boomers or already there
...if they do not need or use a service
today... they will within 10-20 years.***

Did you know?

- 30% of 65+ live alone
- For those 65 and older, 19.4 % live at or below poverty level
- 47.9% live in 'near poverty'
- 67% will need some assistance as they age that they will not be able to afford.
- Will families do it? Will services and programs be able to do it?
- Do we think about it tomorrow? We need to think about it today.

Key Services to Buncombe County Seniors



Through the first nine months of FY 2011 – 12, Block Grant and County Funds made the following possible:

- 27,007 hours of in-home aide services were provided (Avg. Waiting List: 300)
- 2,648 days of adult day and adult day health care were provided
- 17,586 meals were provided to people's homes
- 19,147 meals were served at Congregate Nutrition Sites
- 32,844 trips were taken on Mountain Mobility

Federal and State Planning Context

- **Older American's Act** (1965) requires aging planning
- **North Carolina *Livable and Senior-Friendly Communities* Initiative** (2006)
- **NC Senate Bill 448** (2007) - Buncombe County one of 6 identified by NC to watch how we plan for aging demographic shift
- **Governor's Executive Order** (2010)

Aging Plan (2008-2012) --- a Vision for a Livable, Aging-Friendly Community

Environments are **safe** and support self-sufficiency

The health care system maximizes **wellness** and meets **older adult needs**

Resources and opportunities support and enhance **financial wellbeing**

Living environments (built and natural) enhance functioning of older adults

Social engagement enriches lives with people, places and programs

A collaborative network of **services and supports are coordinated**

Highlights of Accomplishments: 2008 - 2012

- **A**wareness of services
- **B**roadening base of buy-in
- **C**ommunity action

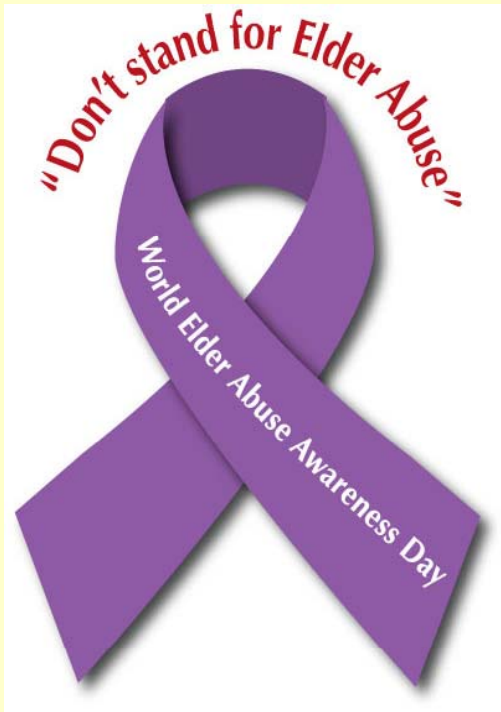
Community Action: Example 1



For more information:
www.crclandofsky.org

- Service and Support Coordination in Plan
- Collaboration of aging and disability providers
- Helps seniors, people with disabilities and family caregivers find, then sift and sort out options for community living
- Assists with nursing home and hospital transitions

Community Action: Example 2



APS reports better working relationships with banks and more reports of suspected exploitation as a direct result of the summits.

- Safety and Security in Plan
- Financial Fraud, Scam and Exploitation Summits – focus on banking/business community
- Collaboration with BC Sheriff's Office; Adult Protective Services; Land-of-Sky Ombudsman; Council on Aging; Better Business Bureau; NC Attorney General and Secretary of State – many others!

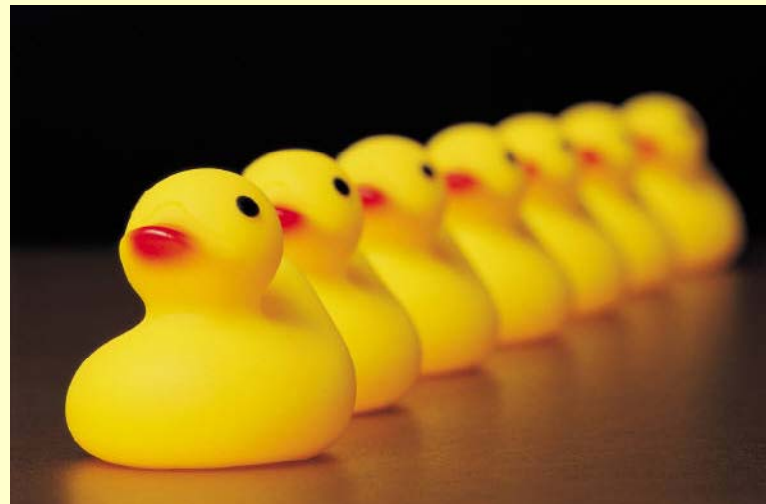
Community Action: Example 3

- Living Environments in the Plan - focus on Housing Options for Elders
- Created "BC – CAN (Buncombe County Culture Change in Aging Network)"- dedicated to creating a culture of aging that is life-affirming, satisfying, humane, meaningful.
- Courting innovative providers and developers and planning forum at UNCA – Reuter Center entitled "Envisioning Home: Creating New Models of Home and Community for Later Life"



Buncombe County Livable, Aging-Friendly Plan: 2013 – 2017

Getting our ducks in a row...



- The present plan focused on Awareness and Collaboration amongst many providers and activities
- The NEW plan will be focused on Specific and Measurable Outcomes and Strategies to Improve Life for the existing and emerging aging population
- New Plan will be ready by January 1, 2013

Thank You!



Linda Kendall Fields, M.Ed. – lkfields17@gmail.com
Buncombe County Aging Plan Coordinator
Co-Chair, ACC Planning Committee

Wendy Marsh – wendym@coabc.org
Director, The Council on Aging of Buncombe County, Inc.
Chair, ACC Community Awareness and Advocacy Committee