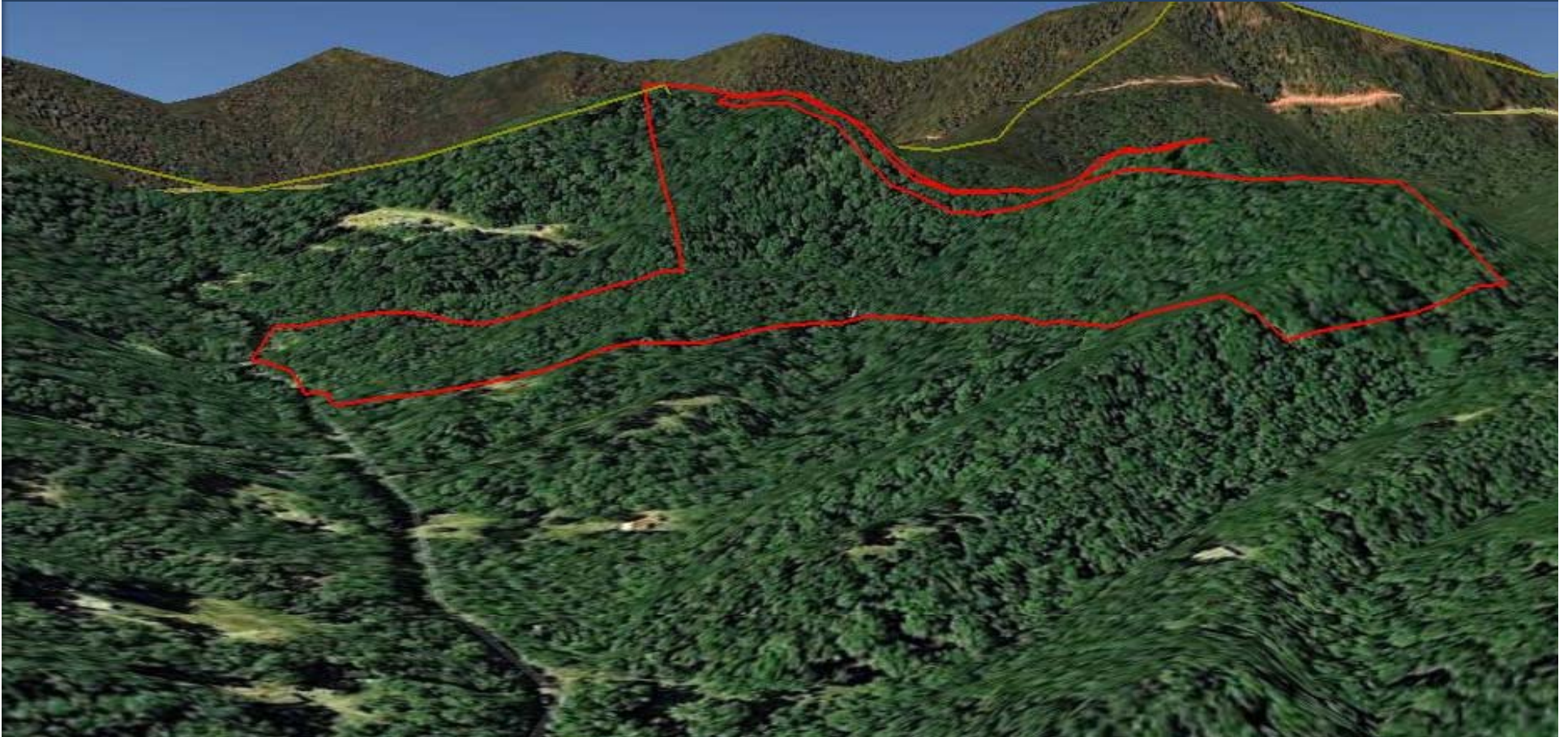


# Buncombe Land Conservation Advisory Board Protecting Treasured Views across our County



# East Buncombe - Swannanoa



Carson Conservation Easement – May 2011  
37 acres adjoining Asheville Watershed

# East Buncombe - Swannanoa



Jim's Branch Conservation Easement  
114 acres - October 2011

# East Buncombe – Black Mountain



SAHC Laurel Ridge Land Purchase & Conservation  
Easement - 492 acres - October 2011

# East Buncombe - Fairview



Little Pisgah Mountain Conservation Easements  
474 acres – December 2011

# East Buncombe - Fairview



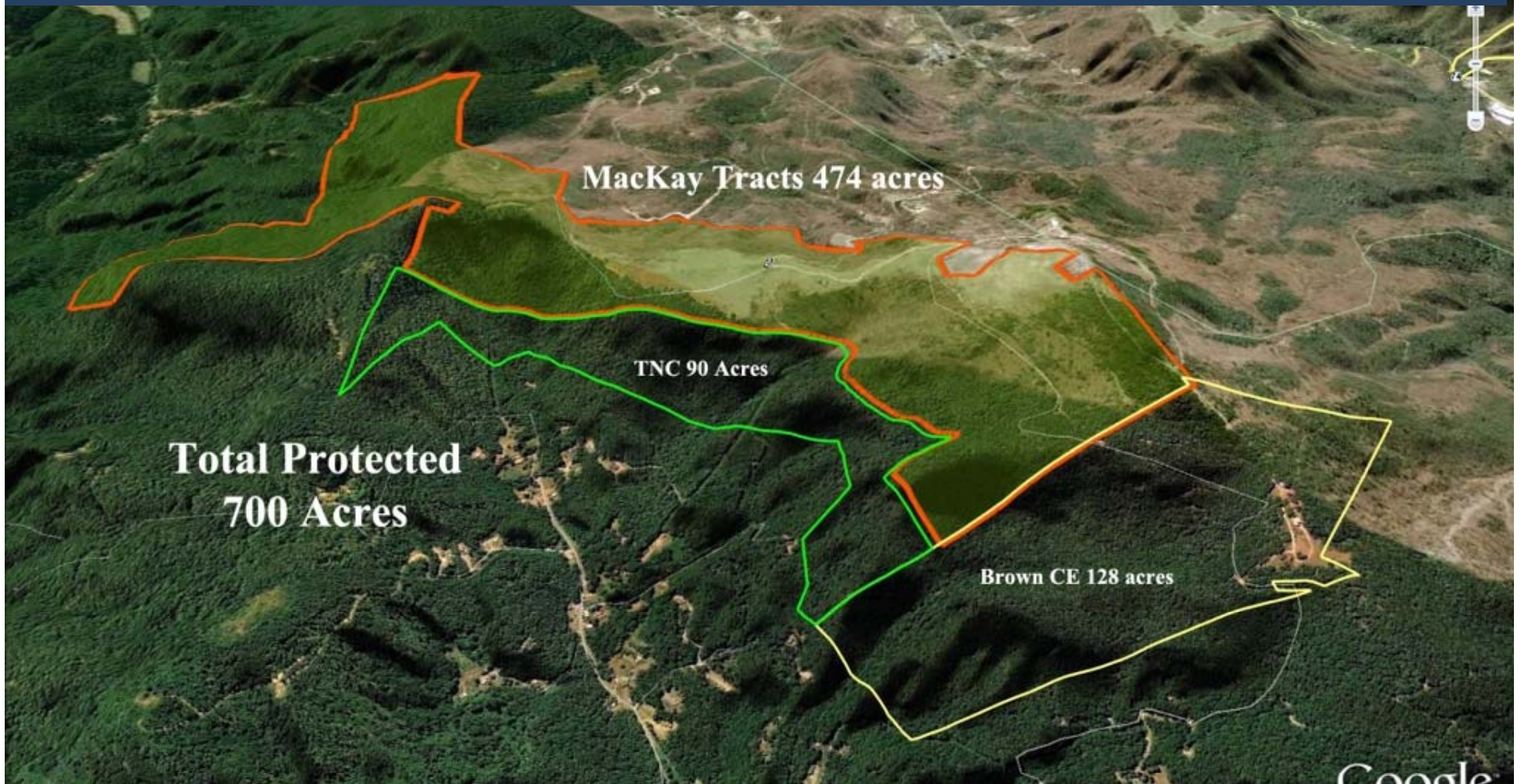
Little Pisgah Mountain

# East Buncombe - Fairview



Little Pisgah Mountain

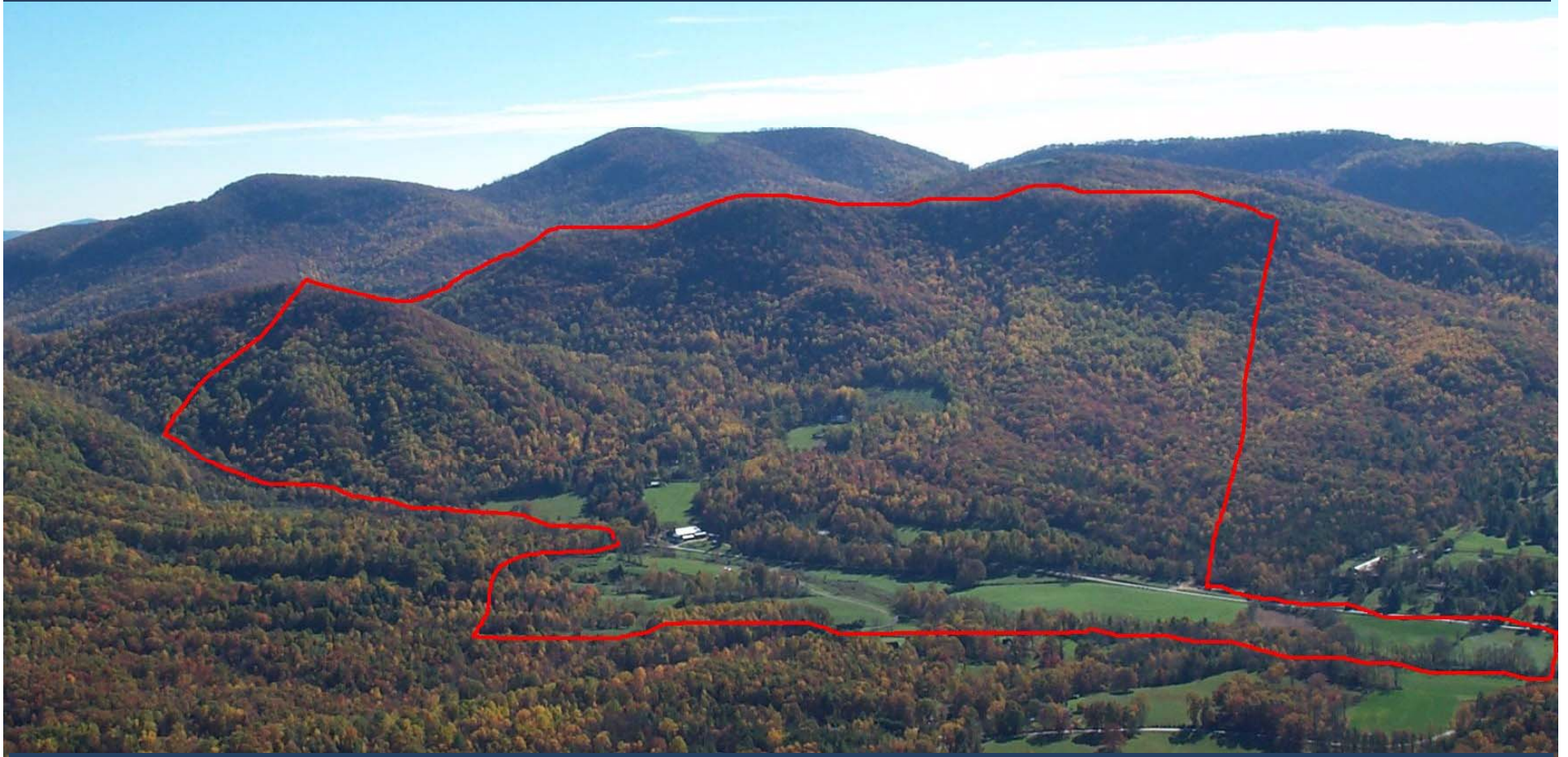
# East Buncombe - Fairview



## Little Pisgah Mountain



# Hickory Nut Gap Conservation Easements - Fairview



This view protected thanks to generous landowners and the County's conservation easement program

# North Buncombe – Reems Creek



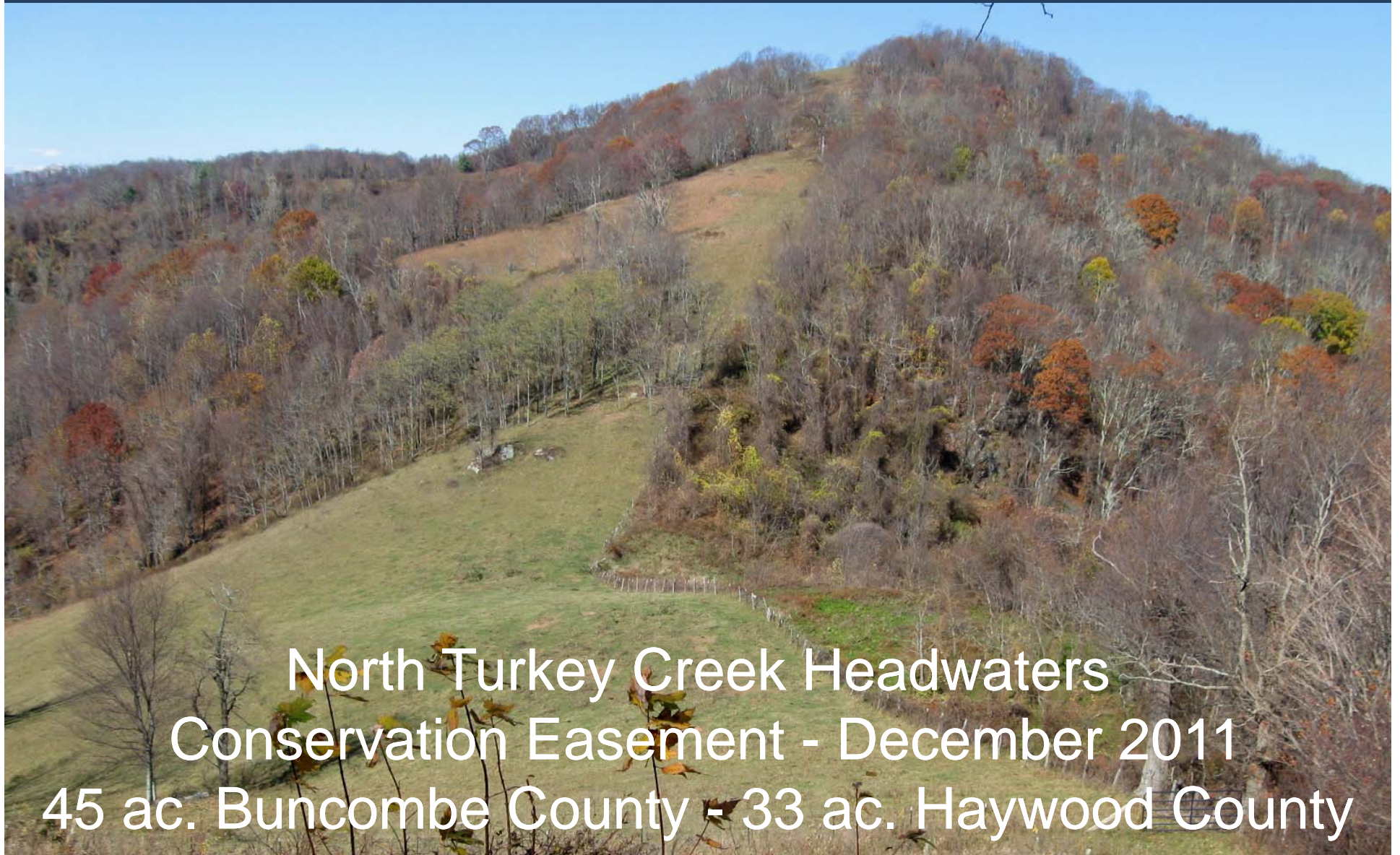
Snowball Mountain Purchase by SAHC – 90 acres - Dec. 2011

# West Buncombe – Sandy Mush



Long Branch Environmental Education Center  
Conservation Easement - June 2011  
622 ac. Buncombe County - 124 ac. Haywood County

# West Buncombe – Sandy Mush



North Turkey Creek Headwaters  
Conservation Easement - December 2011  
45 ac. Buncombe County - 33 ac. Haywood County

# West Buncombe – Sandy Mush



SAHC Robinson Cove Land  
Purchase – 248 acres – Dec. 2011

# Sandy Mush Ridgeline—Asheville's scenic backdrop









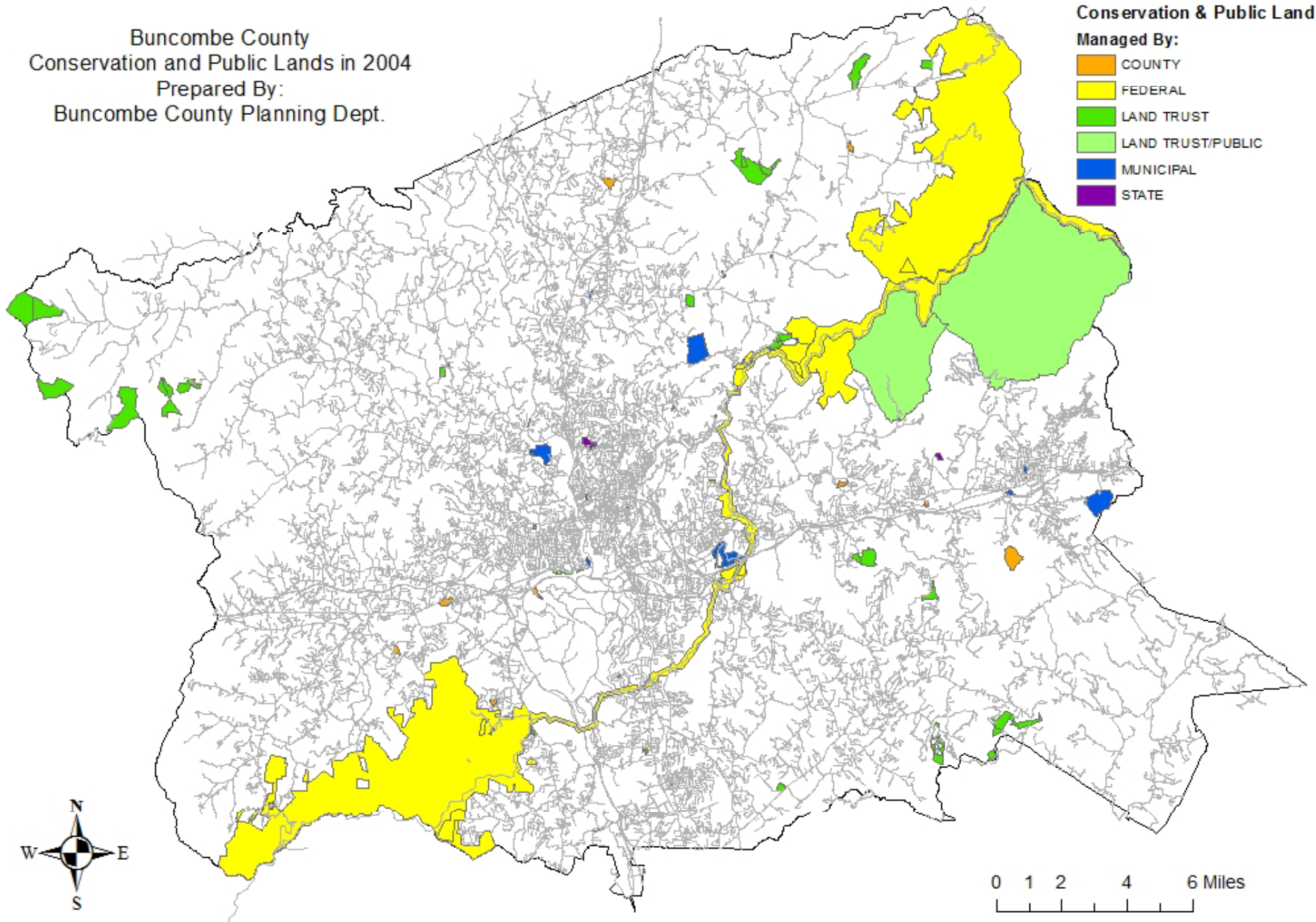
This view protected thanks to generous landowners and the County's conservation easement program

Buncombe County  
Conservation and Public Lands in 2004  
Prepared By:  
Buncombe County Planning Dept.




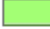


**Conservation & Public Land**

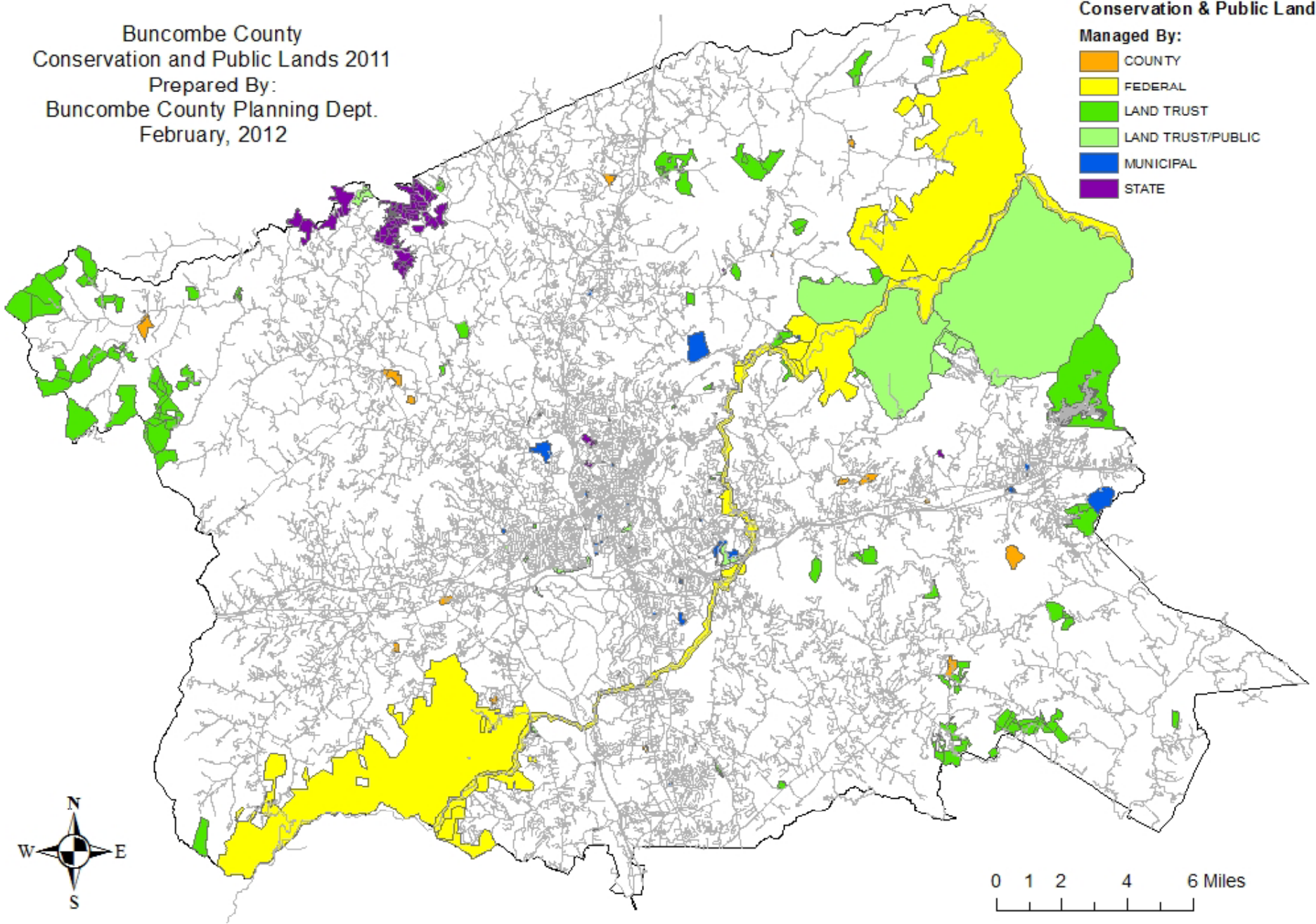
**Managed By:**

-  COUNTY
-  FEDERAL
-  LAND TRUST
-  LAND TRUST/PUBLIC
-  MUNICIPAL
-  STATE



Buncombe County  
Conservation and Public Lands 2011  
Prepared By:  
Buncombe County Planning Dept.  
February, 2012

- Conservation & Public Land  
Managed By:**
-  COUNTY
  -  FEDERAL
  -  LAND TRUST
  -  LAND TRUST/PUBLIC
  -  MUNICIPAL
  -  STATE





# Progress

## 2004

- County Program Begins
- 420,269 Acres in the County
- 57,447 Acres Protected

## 2011

- 2,097 Additional Acres Protected
- 72,095 Total Acres Protected

# 2011 – 8 Projects Total

- County funds in only 2
- 6 projects with no County money
  - Private money
  - State or Federal grants
  - Work done by nonprofit staff with no County money