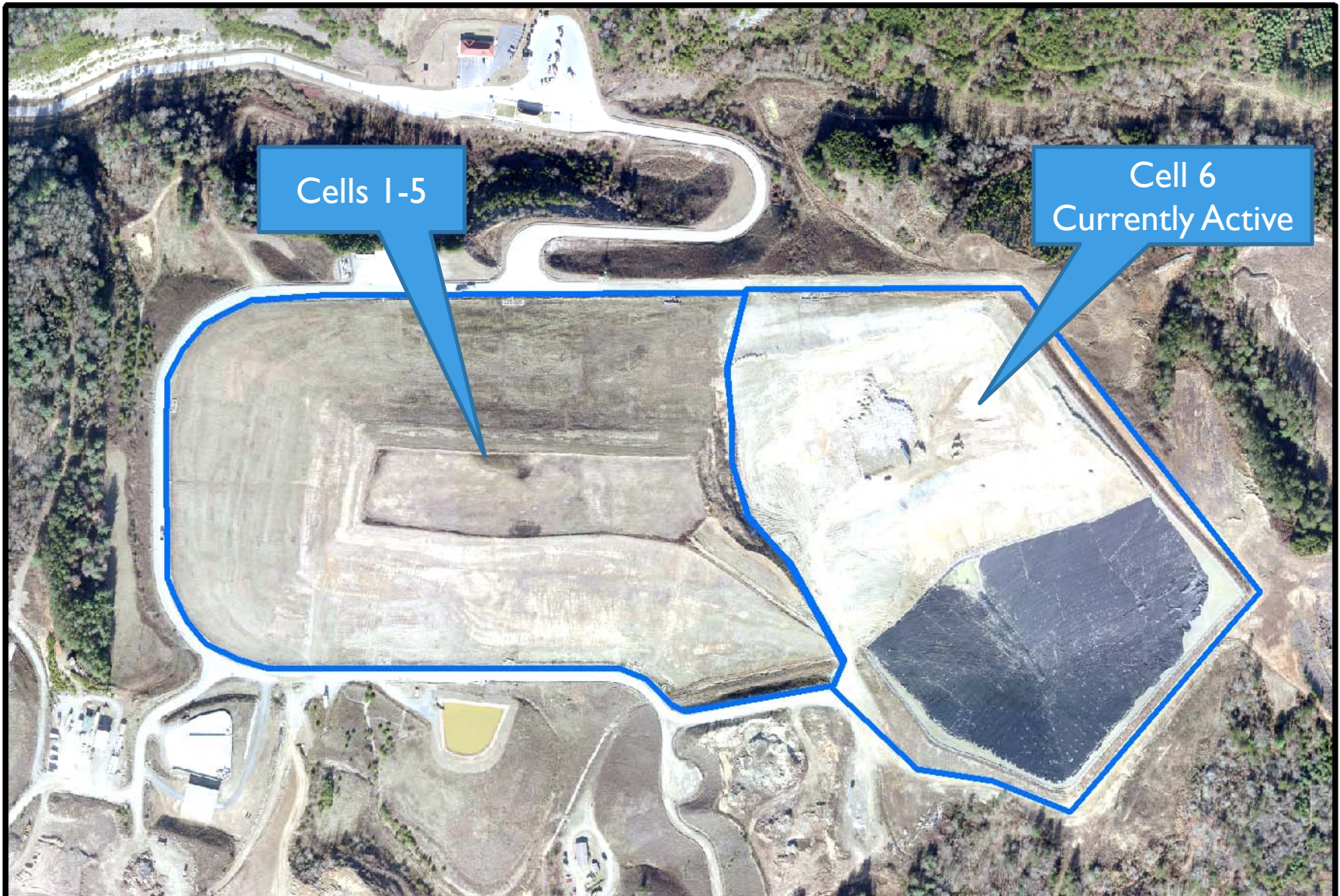


Buncombe County

Supporting Our Goal of Outstanding
Environmental Stewardship



LANDFILL GAS-TO-ENERGY PROJECT



Cells 1-5

Cell 6
Currently Active

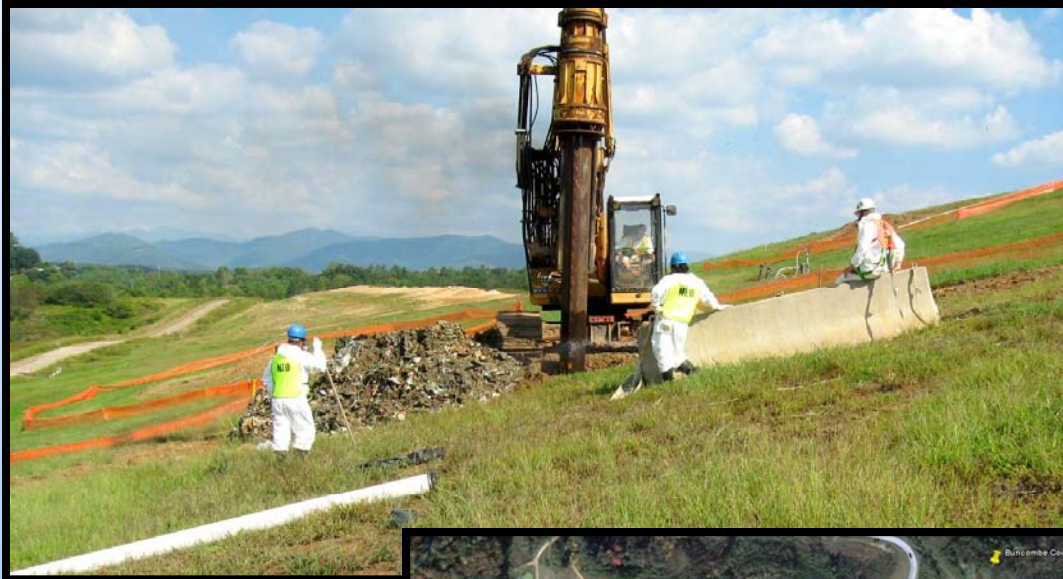
Recognized by the US EPA and SWANA for Outstanding
Landfill Management and Environmental Protection

Buncombe County's Commitment to Outstanding Environmental Performance Resulted in Selection to US EPA's Project XL

- Project XL: eXcellence and Leadership
- One of the first bioreactor landfills in the US
- Implementation and comparative study of an alternate composite liner system



Bioreactor Program Benefits Buncombe County Residents



Aggressive Funding Pursuit Results in County Having to Outlay Less Than 20% of the Initial Capital Cost

- Stimulus Funding:
 - Administered by NC DENR Division of Water Quality, Construction Grants and Loans
 - Project was approved due to its “Green” aspects and because it will reduce Wastewater Pre-Treatment requirements
 - \$1.5M grant + \$1.5M no-interest loan = \$3M
- Other Funding: \$486,000 appropriation
- Guaranteed Maximum Price: \$4,295,676

Green Energy Revenues Result in Payback Period of Less Than 10 Years

- Power Purchase Agreement - Progress Energy
 - Terms: 10 Years at approximately \$60/MWH
 - Expected energy revenue per year: **\$500,000**
 - Will increase when second generator is added
- Renewable Energy Credit (REC) Sales Agreement- GreenCo Solutions
 - Terms: 10 Years at \$11/MWH (escalates after yr. 5)
 - Expected REC revenue per year: **\$100,000**

A horizontal bar spanning the width of the slide, divided into five colored segments: dark blue, orange, green, light blue, and dark blue.

WASTE MANAGEMENT

Solid Waste Management & Recycling

- 1 million pounds of garbage & construction debris accepted daily
- Over 108,300 pounds of recyclables kept out of the landfill daily
- Household Hazardous Waste Facility
 - Every Friday
 - On-Site Staff

Curbside recycling



Fluorescent lights

Electronics



Cardboard



Mattresses



Tires

Environmental Control and Litter Patrol

Keeping Buncombe County Green:

- “Pick It Up” campaign
- Illegal Dump-Site Clean Up
- Recycling Education



Abandoned Mobile Home Removal

- Program Established in 2004
- Voluntary Participation
- 450 Homes Removed to Date



Land Conservation & Farmland Preservation

Buncombe County understands the importance of protecting our scenic views and productive farmland for future generations. Since 2005, the county has spent \$5,748,495 to permanently protect 3,804 acres. That County money leveraged \$26,635,735 in private donations, owner donations and grants. In FY '12, the county budgeted \$1,280,155 to work to permanently protect 1,719 acres proposed for easement.





LEED Certified Courts Building