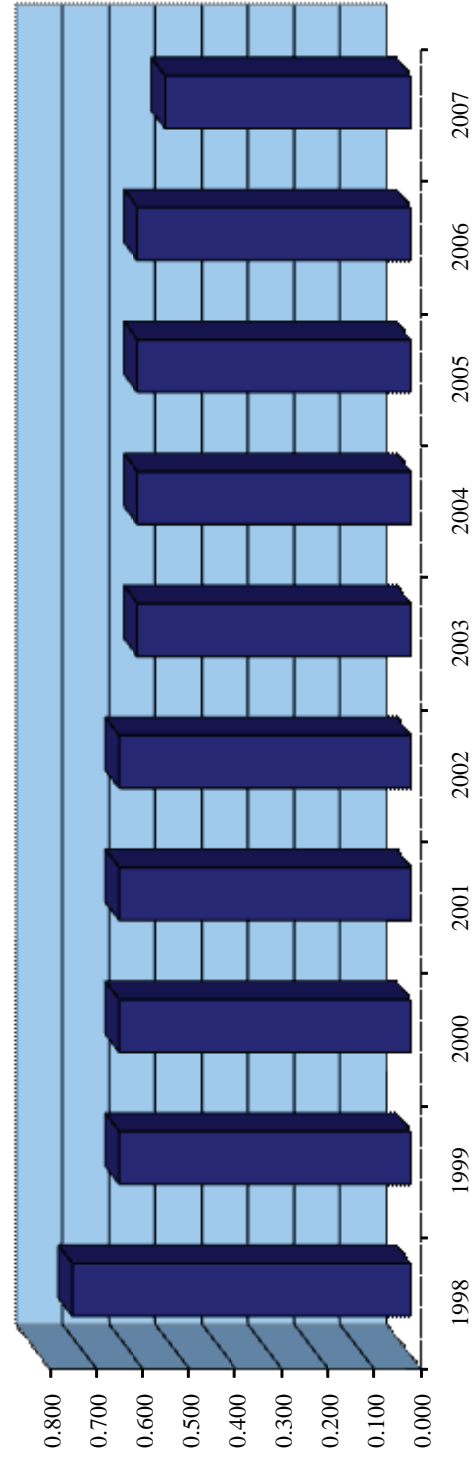


Property Tax Rates-Direct And All Overlapping Governments

Last Ten Fiscal Years

Per \$100 of Assessed Value

| | FISCAL YEAR | | | | | | | | | |
|---------------------------|-------------|-------------|-------------|-------------|-------------|-------------|-------------|-------------|-------------|-------------|
| | 1998 | 1999 | 2000 | 2001 | 2002 | 2003 | 2004 | 2005 | 2006 | 2007 |
| County of Buncombe | 0.730 | 0.630 | 0.630 | 0.630 | 0.630 | 0.590 | 0.590 | 0.590 | 0.590 | 0.530 |
| City of Asheville | 0.570 | 0.520 | 0.560 | 0.560 | 0.560 | 0.530 | 0.530 | 0.530 | 0.530 | 0.424 |
| Town of Biltmore Forest | 0.365 | 0.350 | 0.360 | 0.360 | 0.360 | 0.360 | 0.360 | 0.360 | 0.360 | 0.295 |
| Town of Weaverville | 0.450 | 0.430 | 0.430 | 0.430 | 0.430 | 0.430 | 0.430 | 0.430 | 0.430 | 0.430 |
| Town of Black Mountain | 0.400 | 0.350 | 0.385 | 0.385 | 0.385 | 0.385 | 0.385 | 0.385 | 0.385 | 0.320 |
| Town of Woodfin | 0.320 | 0.280 | 0.280 | 0.400 | 0.400 | 0.325 | 0.285 | 0.285 | 0.285 | 0.265 |
| Town of Montreat | 0.450 | 0.400 | 0.400 | 0.450 | 0.450 | 0.310 | 0.350 | 0.370 | 0.370 | 0.370 |
| Asheville School District | 0.210 | 0.200 | 0.200 | 0.200 | 0.200 | 0.200 | 0.200 | 0.200 | 0.200 | 0.150 |
| Fire Districts | 0.040-0.150 | 0.040-0.150 | 0.040-0.150 | 0.060-0.150 | 0.060-0.150 | 0.075-0.150 | 0.075-0.150 | 0.075-0.150 | 0.075-0.150 | 0.075-0.125 |
| Maximum Combined Rate | 1.510 | 1.350 | 1.390 | 1.390 | 1.390 | 1.320 | 1.320 | 1.320 | 1.320 | 1.104 |



NOTE: Property was revalued and effective in fiscal years 1999, 2003, and 2007.