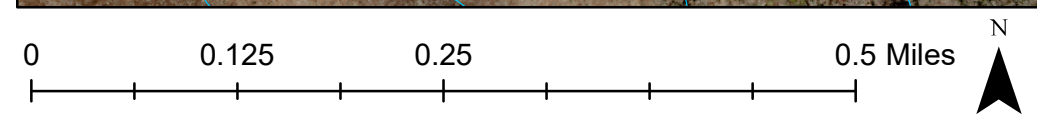


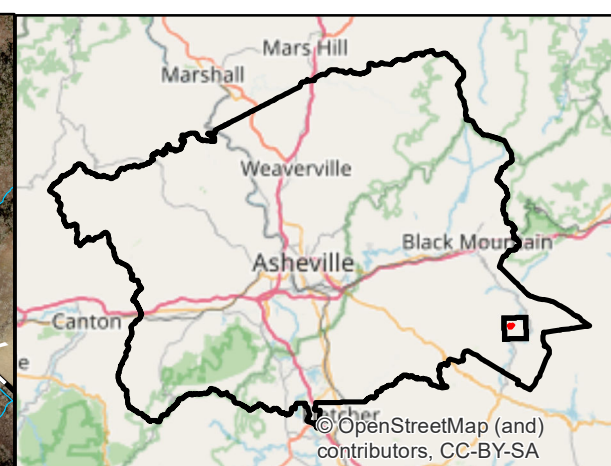
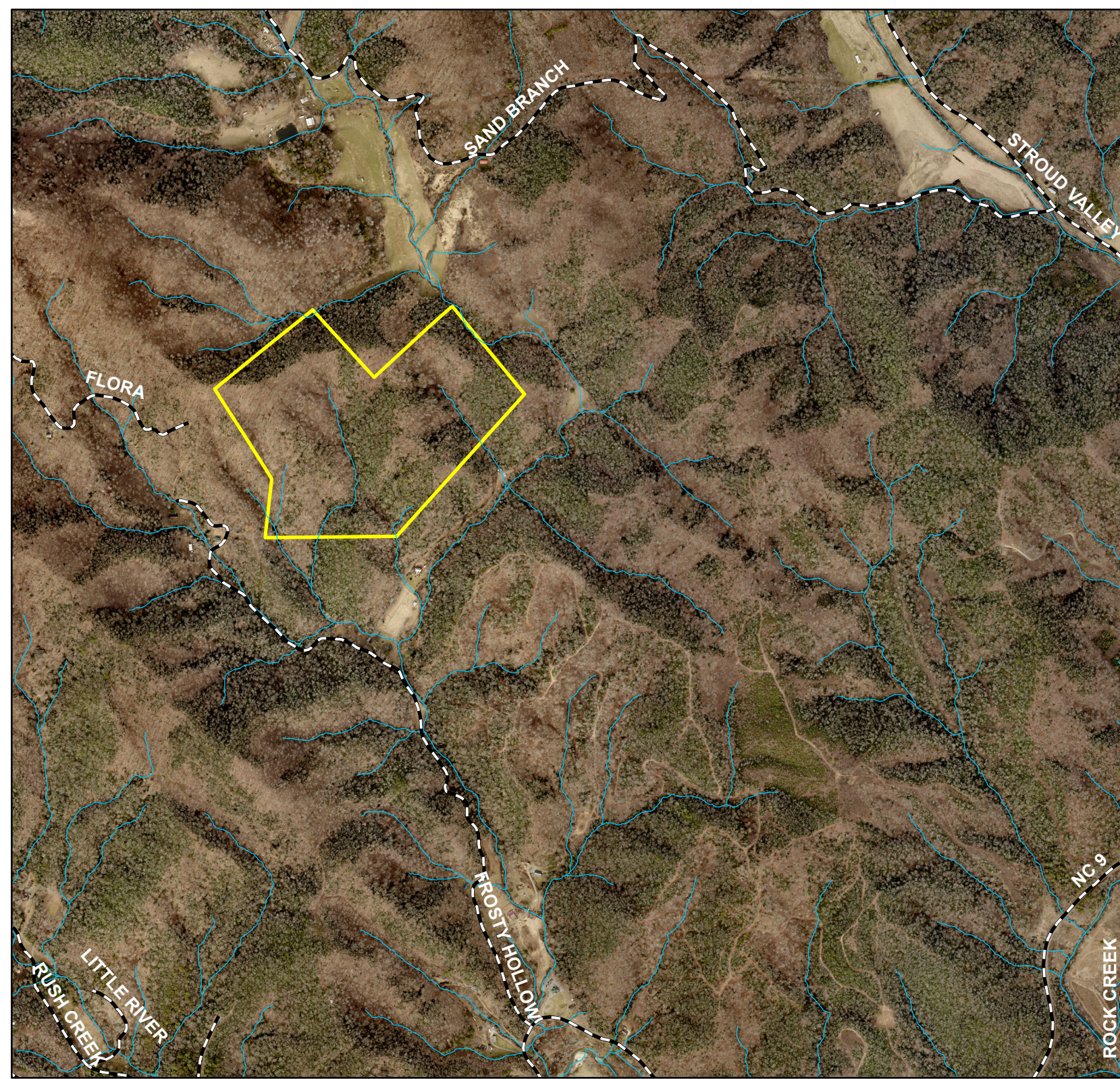
## The Light Center Conservation Easement - Conserving Carolina

- +/-36.5 acres - Broad River Township
- \$46,000 request in transaction costs
- Scenic view shed (Hwy 9) & water quality protection
- Working forest and hay production
- Public access

**Legend**

- Flowlines/Hydrology
- ▭ Easement Area, +/-36.5 acres
- Roadways



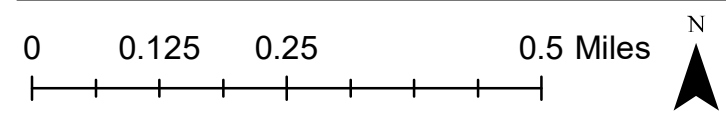


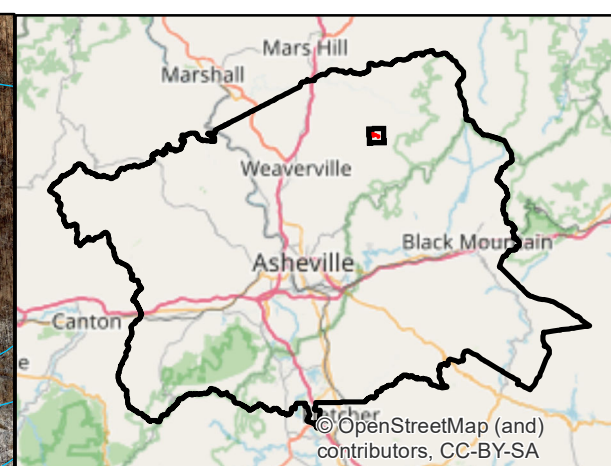
## Sand Branch Phase I Conservation Easement - Conserving Carolina

- +/-64.9 acres in the Broad River Township
- \$45,000 for transaction costs approved in FY23
- Current request is for \$40,000 in easement acquisition
- Predominantly forested - managed for forestry and water quality protection
- Natural Heritage Area designation

**Legend**

- Flowlines/Hydrology
- ▭ Easement Area, +/- 64.9 acres
- - - Roadways





## Tone Hollar Conservation Easement Expansion

- Current easement area is +/-23 acres
- BOC approved \$34,000 in transaction costs in FY23
- Landowners recently purchased an additional +/-25 acres that they'd like to add to easement
- Request a \$28,000 increase in transaction costs for expansion area
- If approved, new easement area will total +/-48 acres

### Legend

- Flowlines/Hydrology
- ▭ Current Easement Area, +/-23 acres
- ▭ Easement Expansion Area, +/-25 acres
- Roadways

