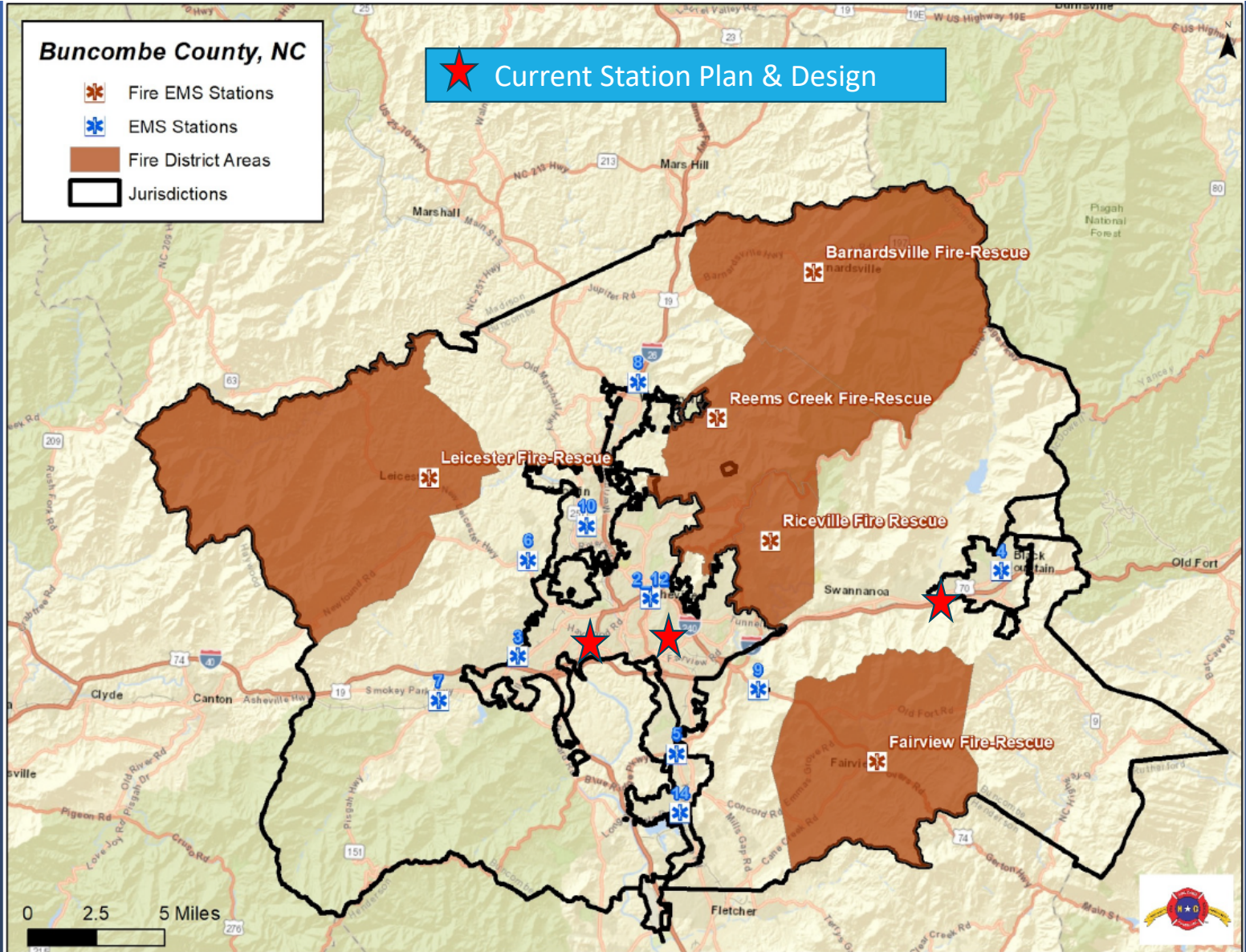


EMS Base Location

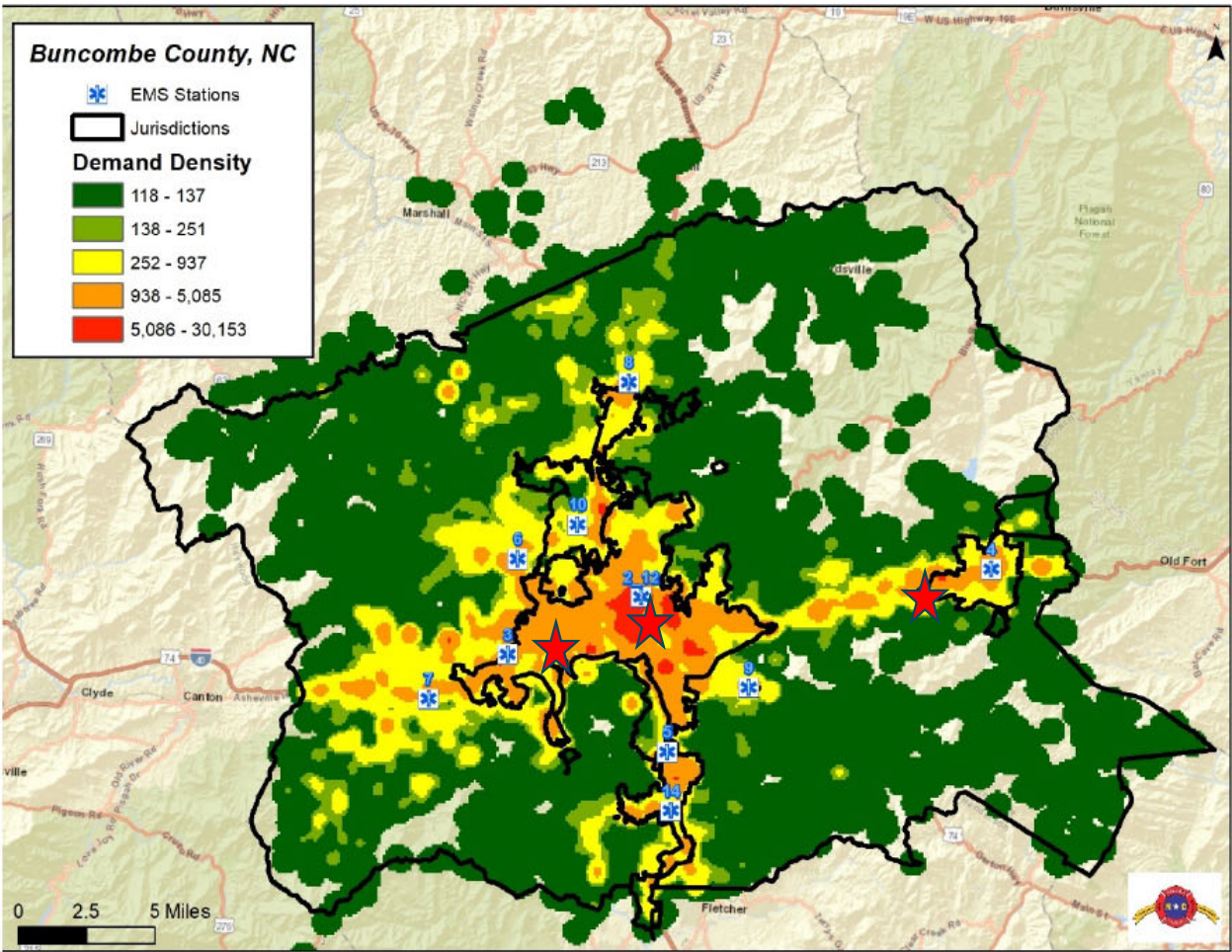


Current Ambulance Distribution in Buncombe County

REPORT PAGE 89

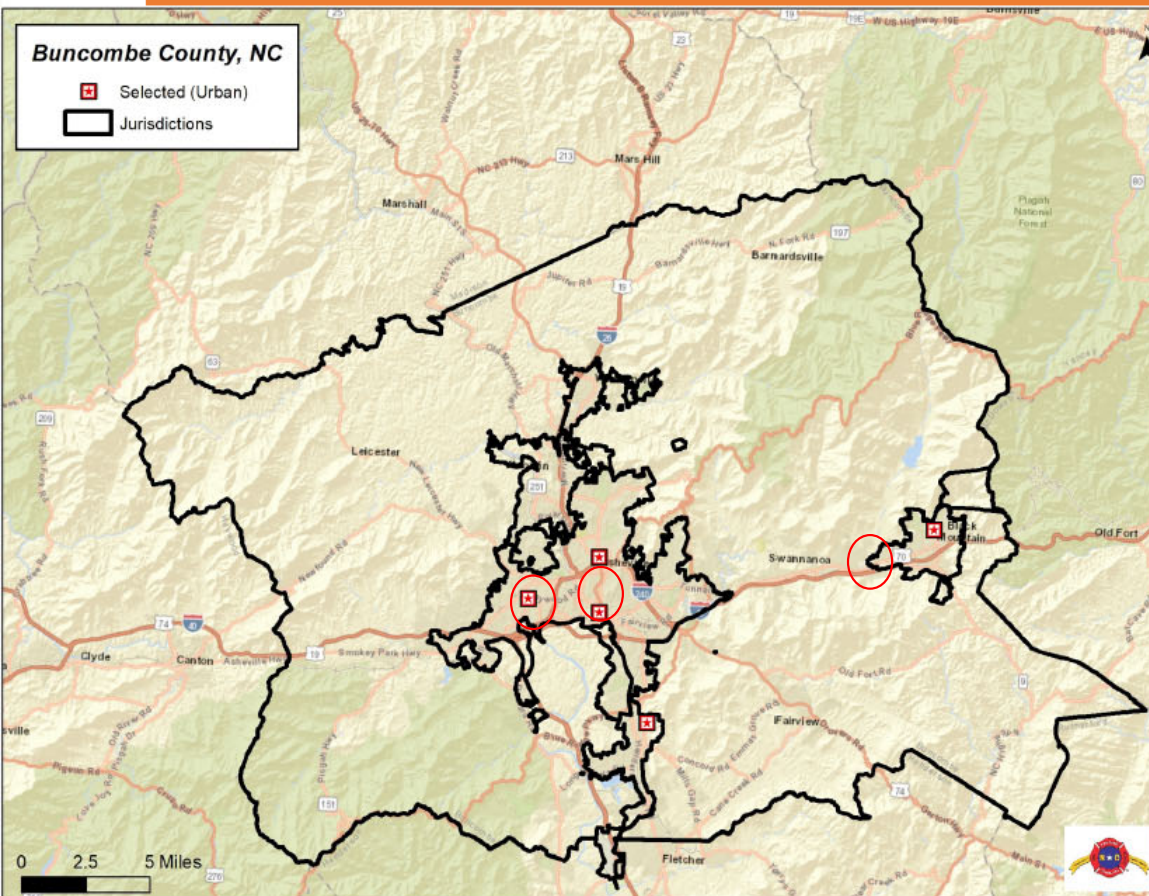


★ Current Station Plan & Design



Demand for Service Concentration in Buncombe County

Urban EMS Station Needs (5):



- South Asheville near Biltmore Village (will be affected by the McCormick EMS Station).
- Downtown Asheville near the current EMS Station 1 (will also be affected by the McCormick EMS Station).
- West Asheville.
- Skyland near EMS current EMS Station 5 (May be affected by the 2022 addition of EMS 14 at Skyland and the addition of the McCormick EMS Station).
- Black Mountain near current EMS Station 4.