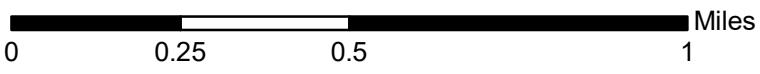
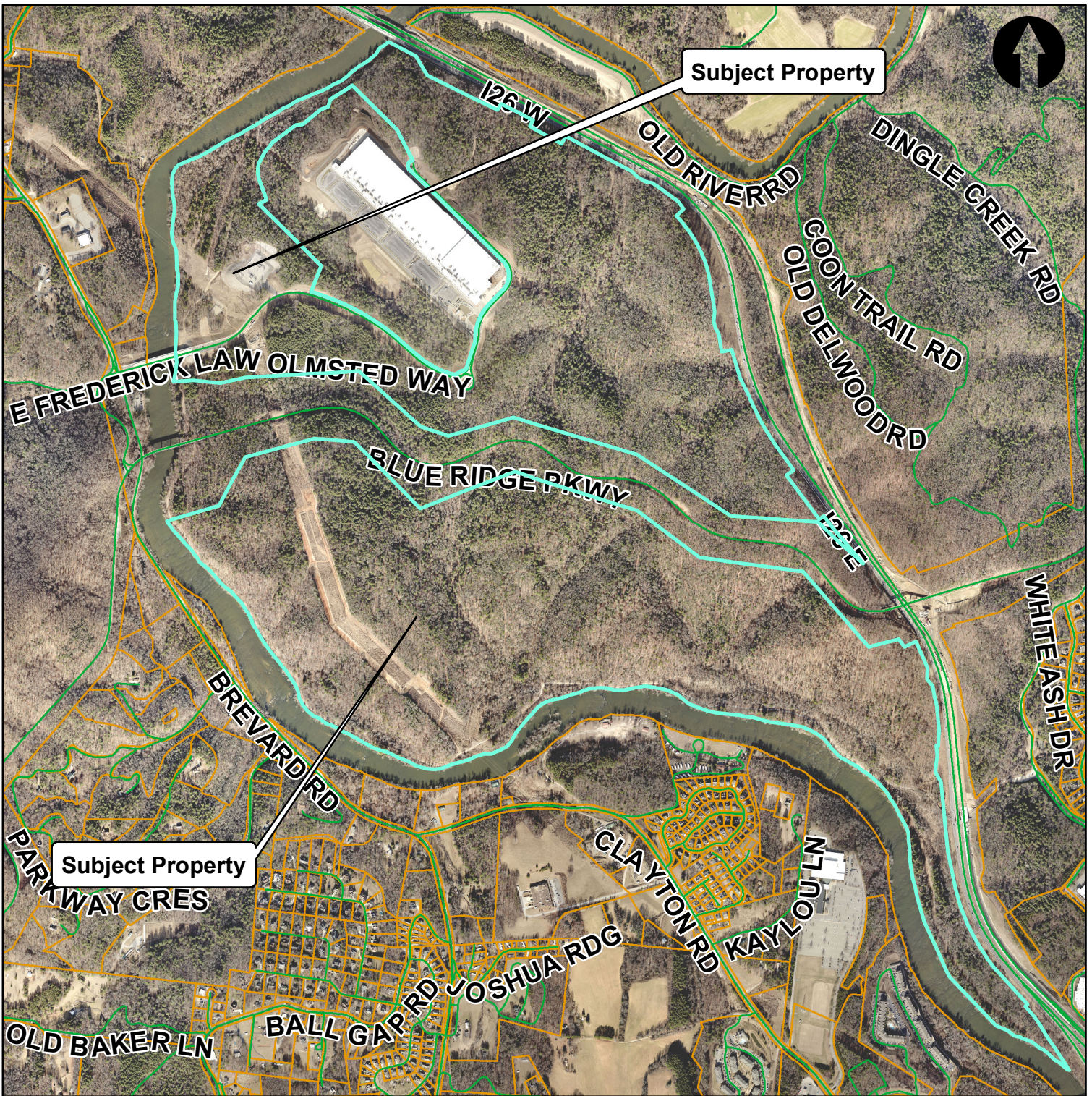


176 E Frederick Law Olmsted Way
 PINs 9635-37-0439 & 9635-54-4215

ZPH2023-00027

Biltmore Farms- E Frederick Law Olmsted

Map Amendment



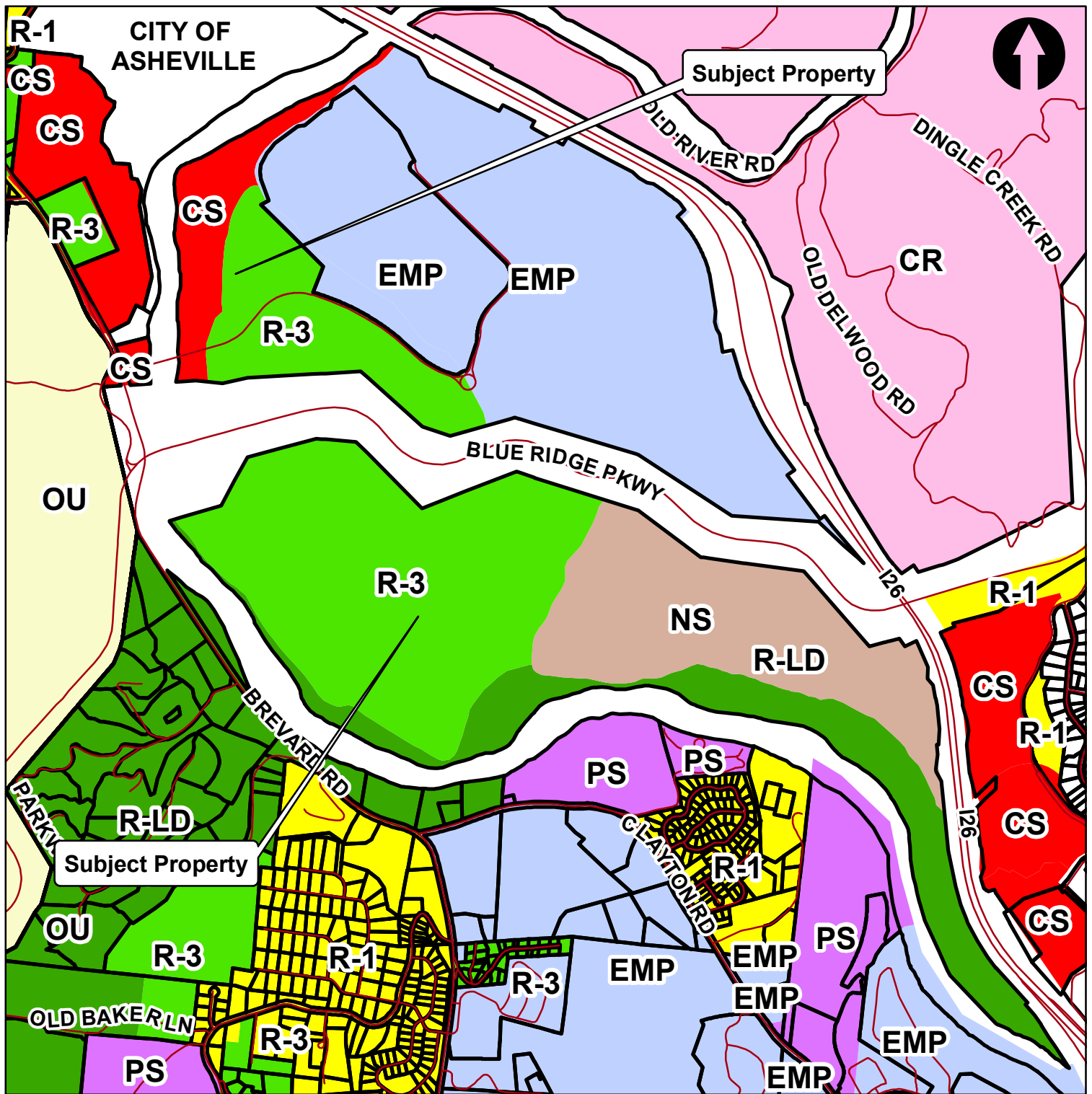
176 E Frederick Law Olmsted Way
 PINs 9635-37-0439 & 9635-54-4215

ZPH2023-00027
Biltmore Farms - E Frederick Law Olmsted
Map Amendment

- Roads
- Property Boundaries

Aerial Map




Created By: Buncombe Co. Planning
 Date: 9/22/2023

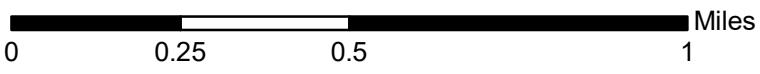
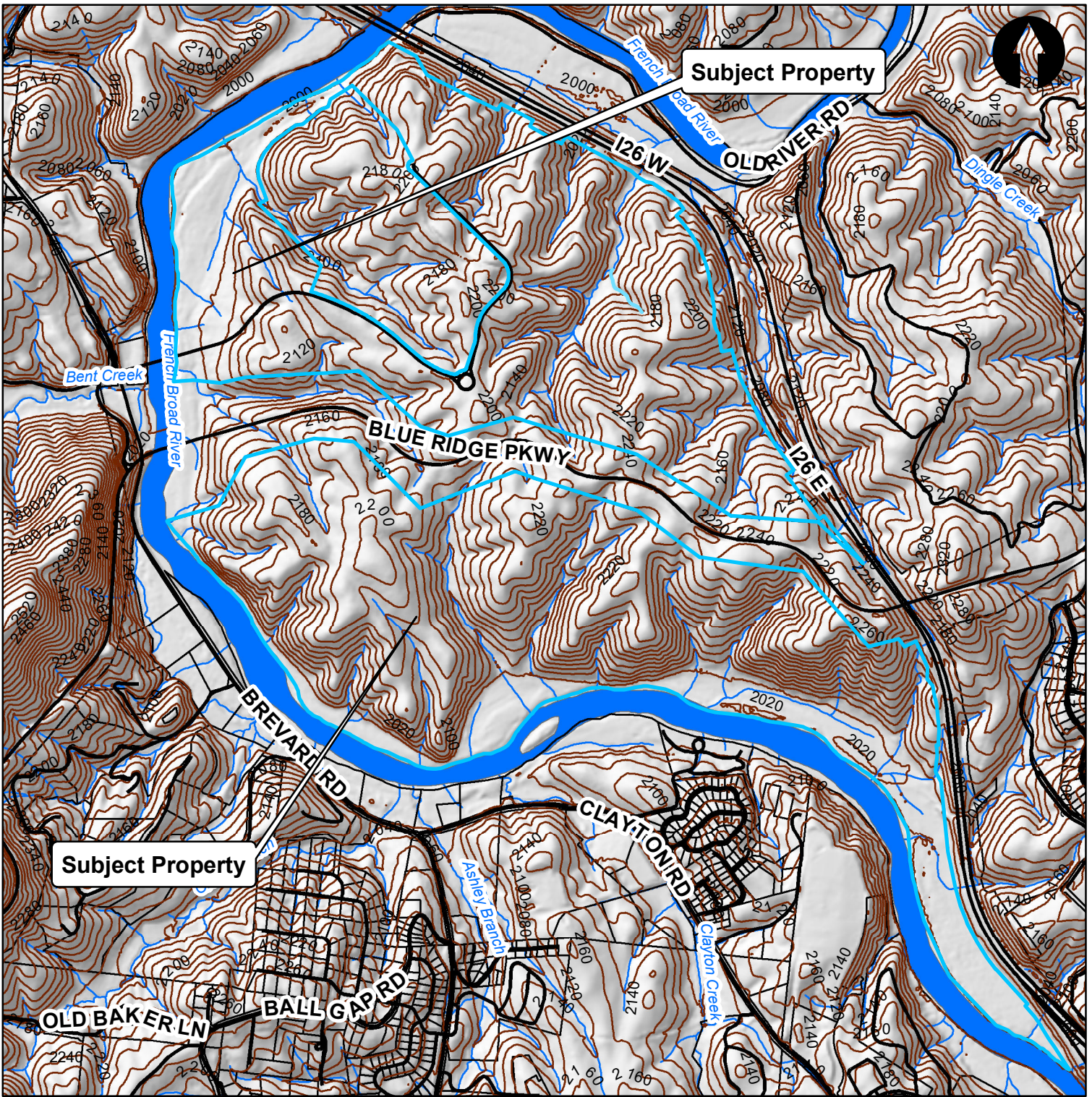


176 E Frederick Law Olmsted Way
 PINs 9635-37-0439 & 9635-54-4215

ZPH2023-00027 Biltmore Farms- E Frederick Law Olmsted Map Amendment

Zoning Map




	AI		EMP		R-1
	BDM		NS		R-2
	CR		OU		R-3
	CS		PS		R-LD



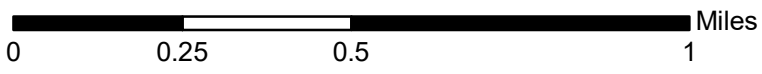
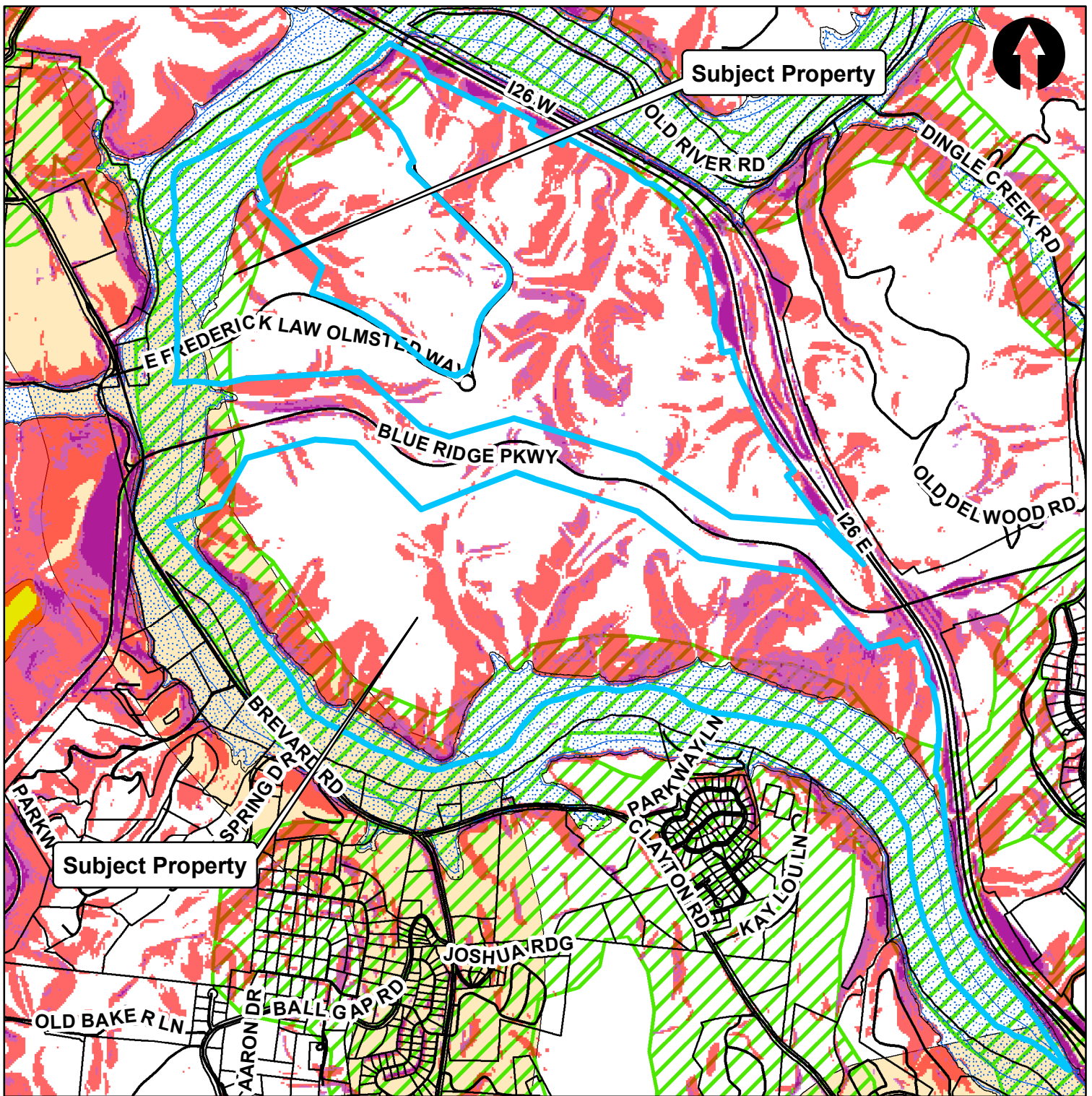
176 E Frederick Law Olmsted Way
 PINs 9635-37-0439 & 9635-54-4215

ZPH2023-00027
Biltmore Farms- E Frederick Law Olmsted
Map Amendment

Topo Map

-  Roads
-  20 Foot Contours
-  Property Boundaries

Created By: Buncombe Co. Planning
 Date: 9/22/2023



176 E Frederick Law Olmsted Way
 PINs 9635-37-0439 & 9635-54-4215

ZPH2023-00027
Biltmore Farms-
E Frederick Law Olmsted
Map Amendment
Hazard Map

Created By: Buncombe Co. Planning
 Date: 9/22/2023

- | | | | |
|--|-----------------|--|-------------------------------|
| | 500 yr | | 0 - 25 % Slope |
| | A - 100 yr | | Greater than 25% Slope |
| | AE - 100 yr | | Greater than 2500' |
| | High Hazard | | Proximity to Public Utilities |
| | Moderate Hazard | | Transportation Corridors |
| | Low Hazard | | |