

# State of Emergency

Buncombe County's Burn Ban

Ryan Cole

Assistant Director, Emergency Services



# Why a State of Emergency?

- Prolonged drought conditions
- Low atmospheric humidity
- Unstable wind conditions
- High fire danger
- Multiple fires in the region depleting local resources



# What a State of Emergency Does

- Reduces our vulnerability
- Prepares for prompt and efficient response
- Provides for coordination with other agencies who can help expedite responses, regardless of jurisdiction
- Heightens public awareness and personal responsibility

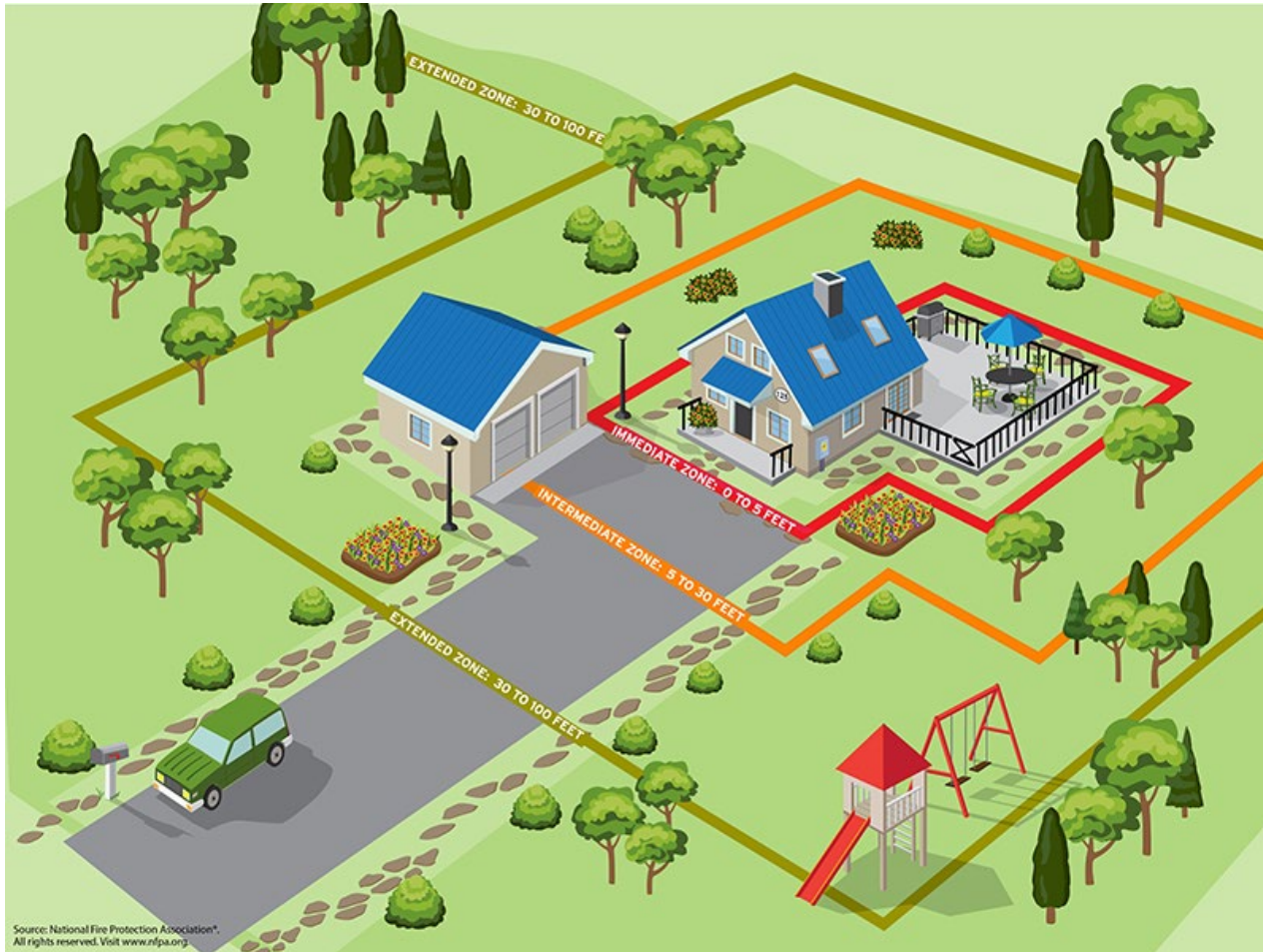


# How Long Will We Have a State of Emergency?

- Until conditions improve and the risk factors recede, which will require significant rainfall not currently in our forecast

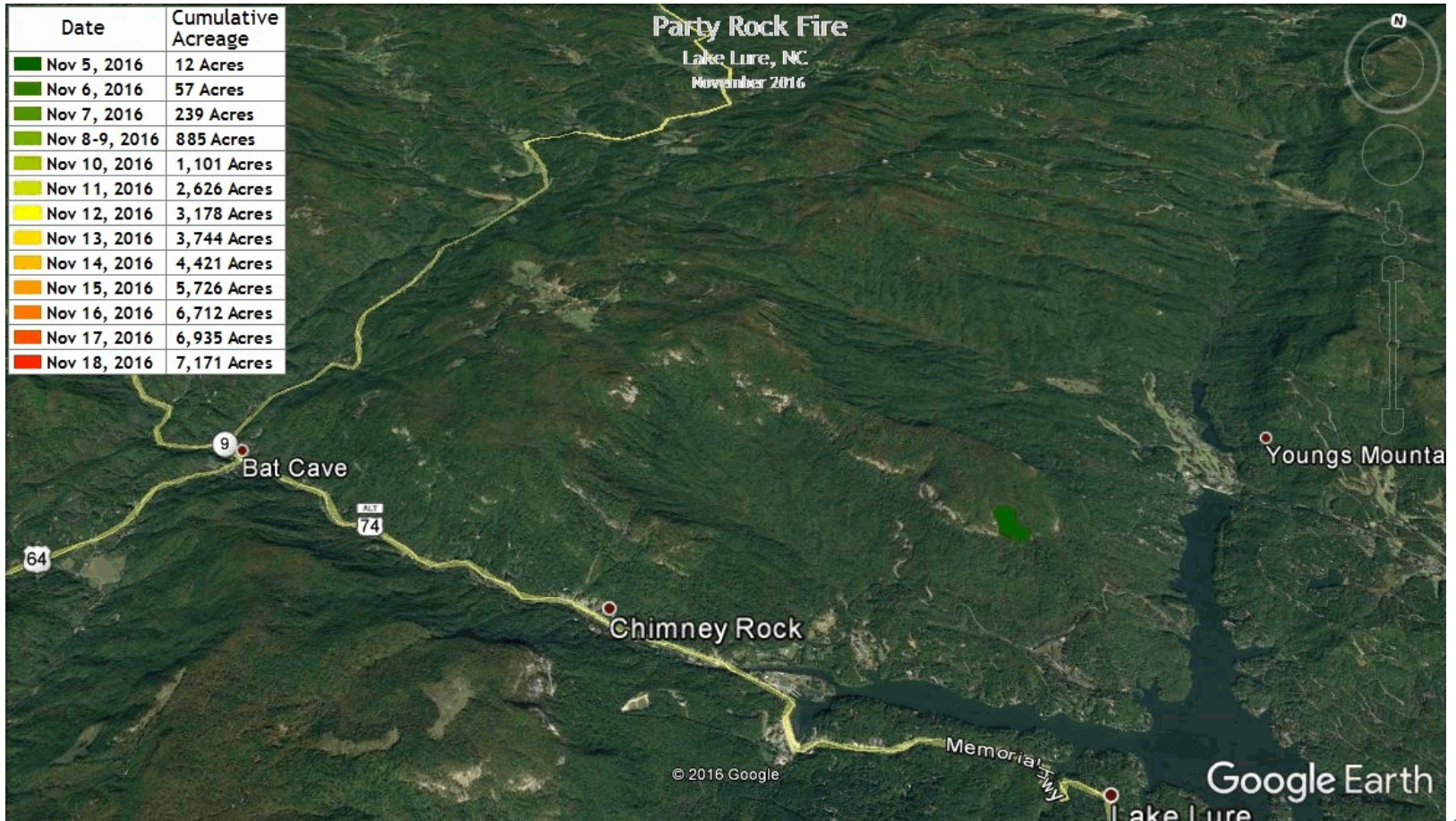


# Personal Fire Safety





# How Fires Can Grow



# State of Emergency – Next Steps

- Preparing for sheltering operations in the event that relocations are necessary
- Preparing for coordinated responses
- Daily situational reporting with partner agencies
- Monitoring conditions and resources within the region
- Continued cooperation with the public to reduce community risk
- In case of emergency, we will utilize Code Red text alerts. Sign up by texting “BCAlert” to 99411 or go to [www.buncombecounty.org/codered](http://www.buncombecounty.org/codered)



# State of Emergency – Amplifying the Message

- Electronic billboard space donated by Lamar Advertising
- PSAs donated by iHeartRadio network
- Flyers at County campgrounds
- Traditional media outreach
- Buncombe County social media channels
- Slides at Buncombe County locations including 40 Coxe

