



# Spivey Mountain

*Presented by*

Commissioner Terri Wells &

Allison Dains, Parks & Recreations Director

Board of Commissioners Briefing

April 4, 2023



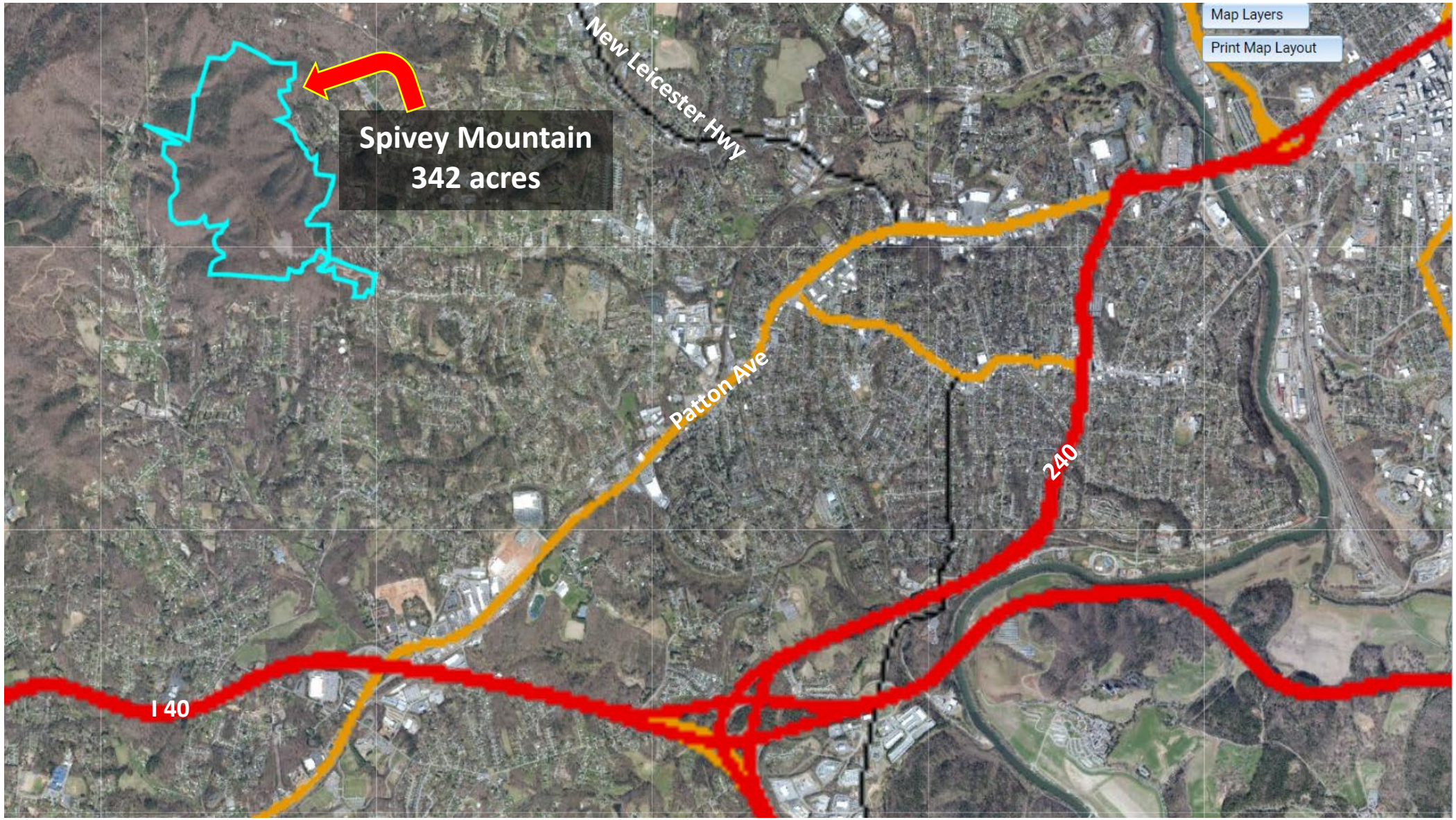
# Spivey Mountain Property

Property is located in the  
Deaverview Community



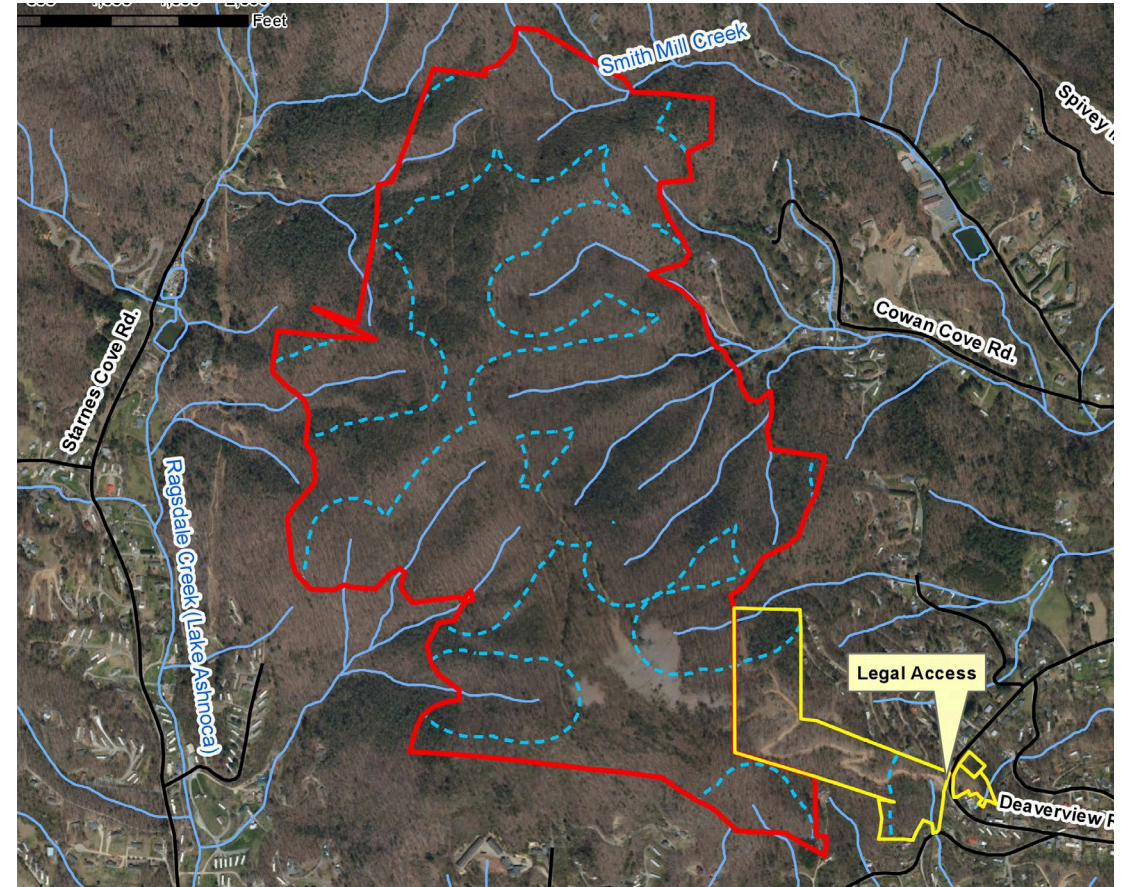
- 
- 5.2 miles from Downtown Asheville
  - 3.6 miles from West Asheville
  - 7.5 miles from Leicester
  - 7.9 miles from Candler





# Property Status

- **Ownership**
  - Privately owned by conservation-minded individual as of March
  - SAHC (Southern Appalachian Highlands Conservancy) – 3 year option to secure needed funds for County donation of property
- **Funding Status**
  - Potential Land and Water Grant Funding: \$4,369,630
  - Additional Funding Needed: \$4,510,000
  - Total Project Cost: \$8,879,630

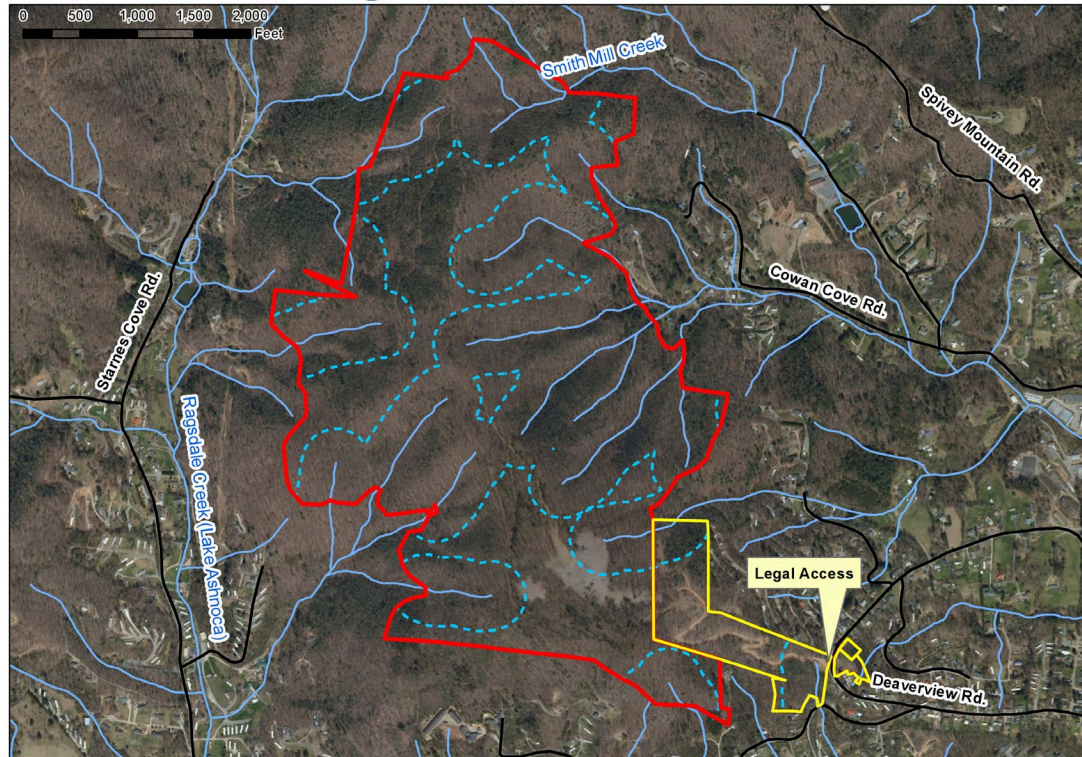


# Allowances in the NCLWF Conservation Easement

2023 Deaverview Mountain Tract  
Southern Appalachian  
Highlands Conservancy



■ NCLWF Conservation Easement  
■ NCLWF DCR Match Area  
— Streams  
- - - 300' Buffer  
— Roads



- Multimodal unpaved trail development
- Parking lot
- Restrooms
- Storage shed
- Covered picnic shelters
- Observation/viewing platforms
- Educational kiosk
- Maintenance of trails and viewsheds



# Expected Timing

- **Expected SAHC ownership & County Donation: Early 2026**
- **Expected Start for Improvements: 2027 (earliest estimate)**



# Discussion

