

Economic Development Coalition for Asheville-Buncombe County

Update for Buncombe County Board of Commissioners 2022



BUNCOMBE COUNTY



About Us



ACCREDITED
ECONOMIC
DEVELOPMENT
ORGANIZATION

International Economic Development Council

*The EDC is a 28-year, public-private partnership of **Buncombe County, the City of Asheville** and the **Asheville Area Chamber of Commerce** advancing opportunity, quality of life and economic sustainability in Buncombe County through workforce investment, high-wage job creation & economic diversification*



BUNCOMBE COUNTY



EDC Team



April Brown



Maxwell Olle

Business Retention, Expansion, Recruitment

- Community Marketing, Recruitment and Site Selection Services
- Sharing Environmental, Sustainability, Social Governance & Employment Best Practices



Clark Duncan



Samantha Cole



Tiarra Wilkie

Strategic Workforce Partnerships

- Employer, Educator & Youth Engagement
- Expanding Economic Access Through Next AVL, Inclusive Hiring Partners, Apprenticeships



Ron Dumas
UNCA Intern



Jeff Kaplan



Desiree Monstrola

Venture Asheville

- Team Mentorship, Connection, Recognition and Capacity Building
- Supporting the Financing & Funding Needs of Founders and Start-Ups



Heidi Reiber



Maggie Smith

Riverbird Research

- Analytics and Tools for Better Business Decision Making
- Monthly Economic Indicators, Demographic & Economic Impact Studies



Activities & Accomplishments: Industry Retention, Expansion & Recruitment



INDUSTRY NINE

Industry: Outdoor & Bike Manufacturing

New Jobs: 50

Capital Investment: \$6 Million

"Industry Nine is proud to continue building on the foundation that started in 1969 with Turnamics here in Asheville. The area's ethos, in combination with manufacturing and a love for the outdoors, continues to be a reason for our success."

— CLINT SPIEGEL
President, Industry Nine



EAST FORK

Industry: Clay Product Manufacturing

New Jobs: 50

Capital Investment: \$2.4 Million

"Since East Fork's founding in 2010, we have been able to grow significantly thanks to our amazing team and the support of our community. We are very pleased to call Asheville our home as we continue evolving."

— ALEX MATISSE
Founder East Fork Pottery



LEGALLY ADDICTIVE

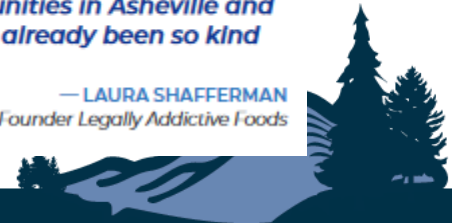
Industry: Food Manufacturing

New Jobs: 15

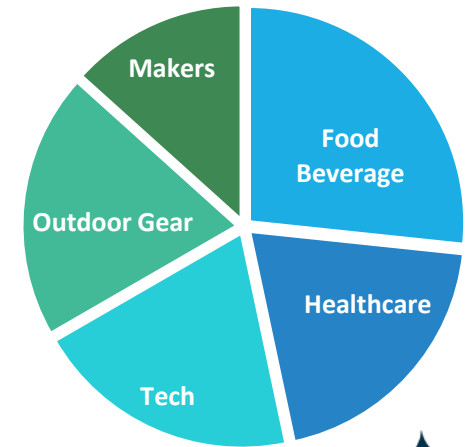
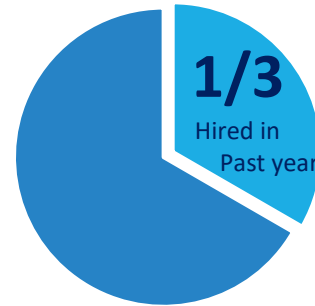
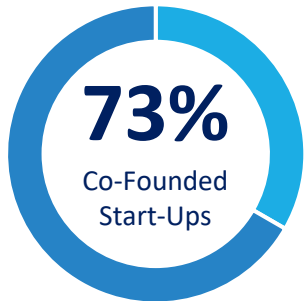
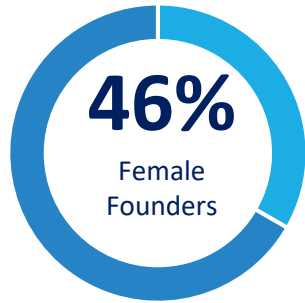
Capital Investment: \$1.5 Million

"Relocating to Asheville will give us an incredible geographic advantage...We are truly inspired by both the business and creative communities in Asheville and are grateful to everyone who has already been so kind and welcoming to us."

— LAURA SHAFFERMAN
Founder Legally Addictive Foods



Activities & Accomplishments: Entrepreneurial Development

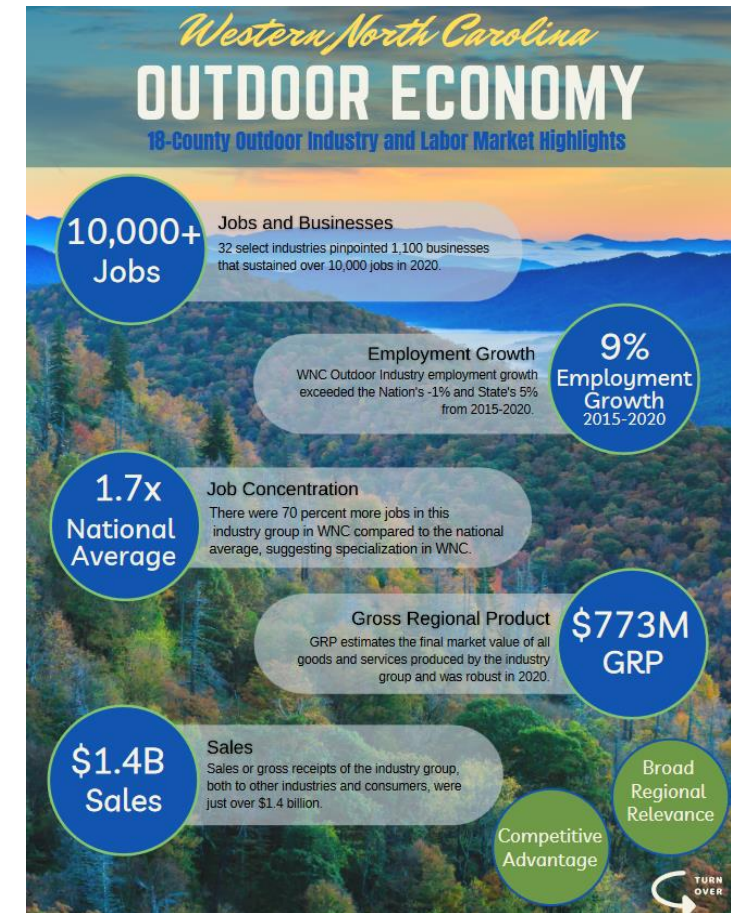
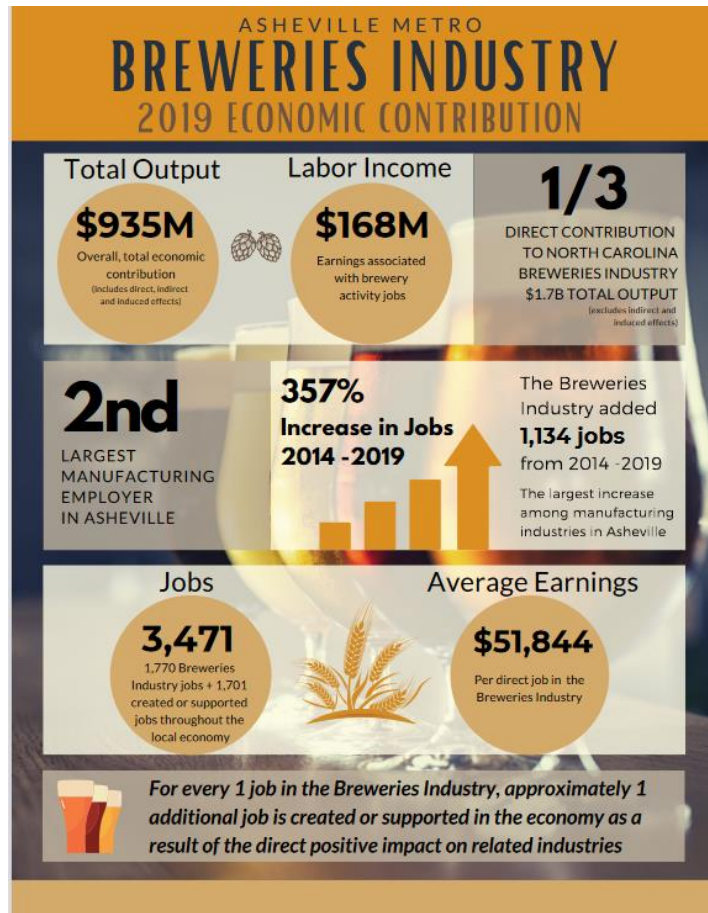


Over 100 Start-ups Served in ELEVATE Program Lifetime



Activities & Accomplishments: Representative Projects of Riverbird Research

<https://riverbirdresearch.com/>



Activities & Accomplishments: Workforce Partnerships & Economic Mobility



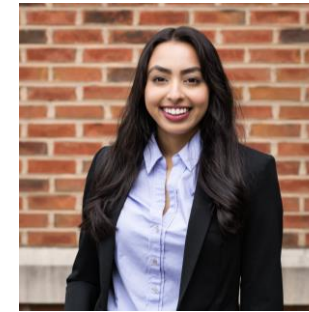
WHERE YOU WANT TO BE



Agency Relations Coordinator at MANNA Foodbank, Asheville, NC



Strategic Operations Coordinator at Shining Rock Ventures, Asheville, NC



Technical Sales Leadership Program at EATON, Asheville, NC

9 Month Mentorship

3 Pilot Years

5 Colleges & Universities

63 Students Served

40 FY23 Enrollment



Activities & Accomplishments: Workforce Partnerships & Economic Mobility

Better Careers

Support services
Work-based learning
Greater access
to opportunity



**INCLUSIVE
HIRING PARTNERS**

Better Workplaces

Guaranteed interviews
Case manager contact
during onboarding
DEI training
From LRU



Activities & Accomplishments: Workforce Partnerships & Economic Mobility



Community Action Opportunities
HELPING PEOPLE. CHANGING LIVES.



Activities & Accomplishments: Workforce Partnerships & Economic Mobility



INCLUSIVE
HIRING PARTNERS



Employer Partners



Activities & Accomplishments: Workforce Partnerships & Economic Mobility

145 Job Seekers Screened

**56 Job Seekers Currently
in Placement Process**

20 Placements

**\$18.62
Average Hourly Wage**



**INCLUSIVE
HIRING PARTNERS**

Outcomes

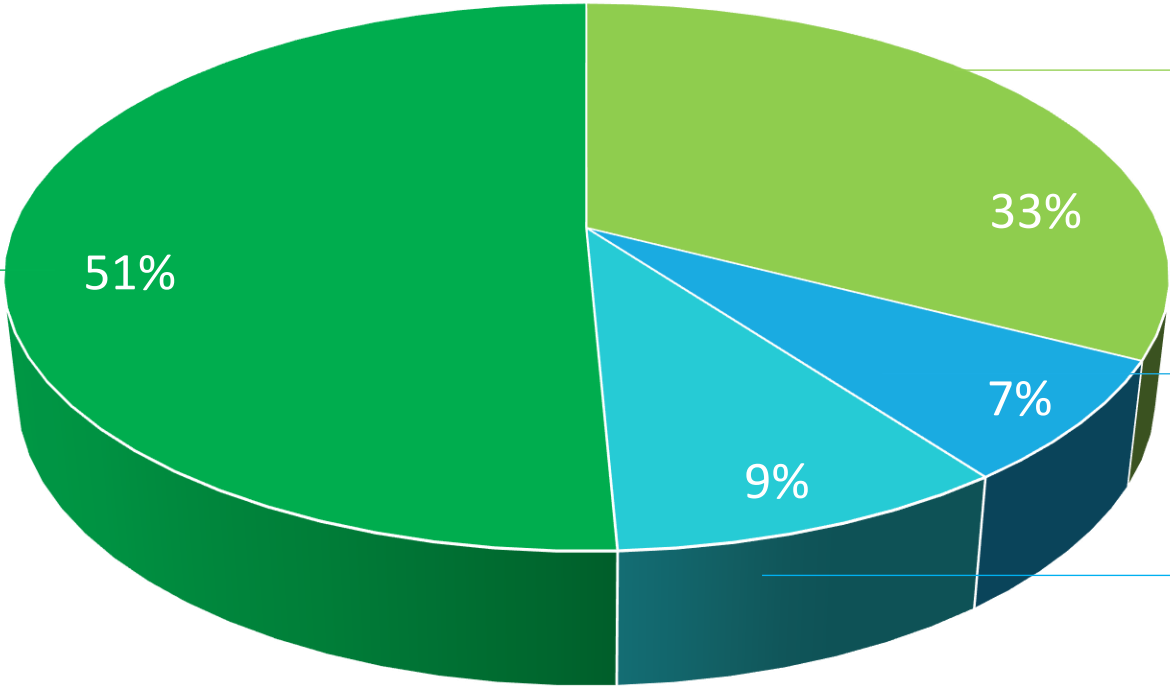
**Enrollment Rate
Jumped
19% - 45%
In 2022**

**56% BIPOC
Representation**



Financial Update

FY2023 Operating Budget \$1,379,649



Golden LEAF
FOUNDATION



