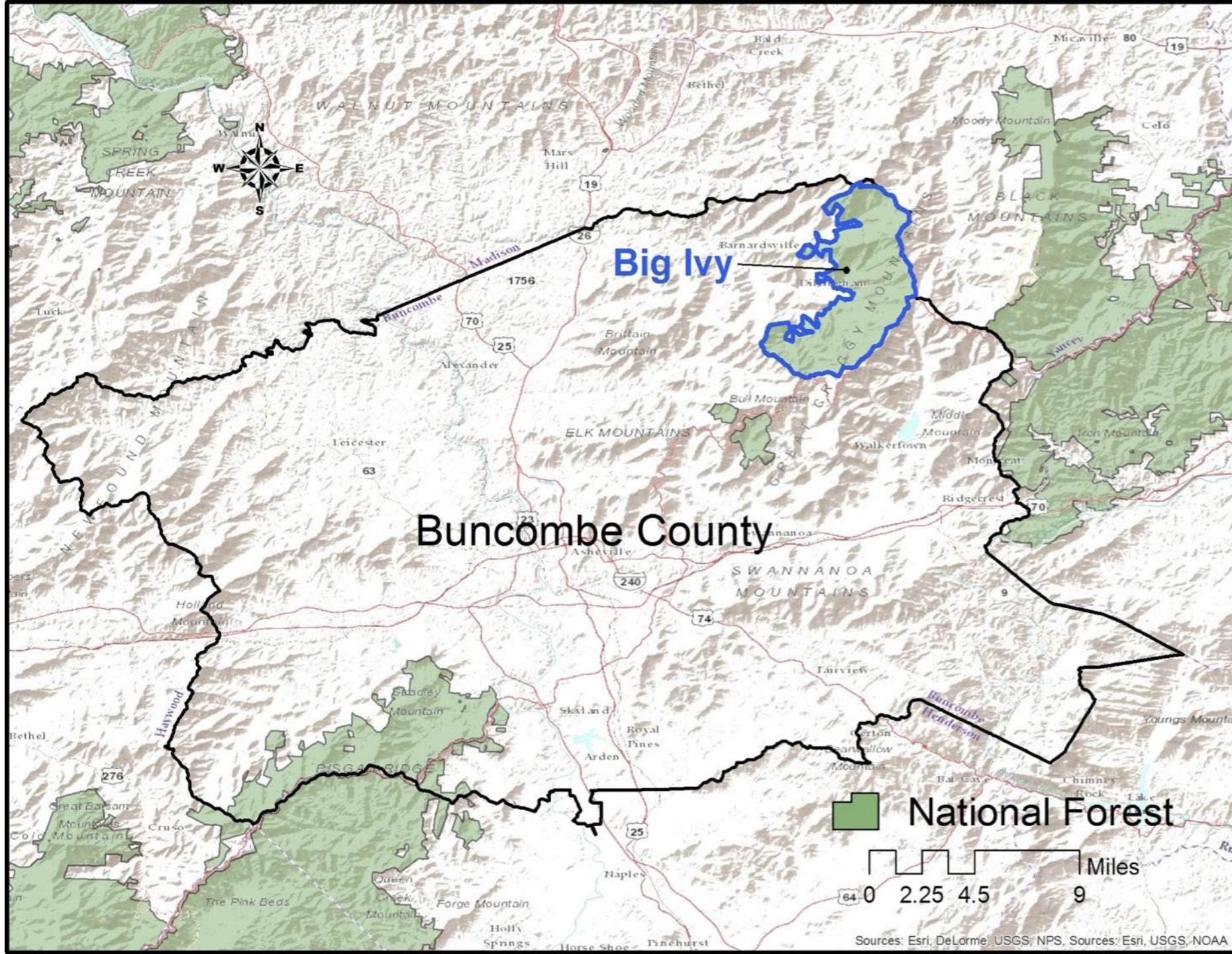


Craggy National Scenic Area













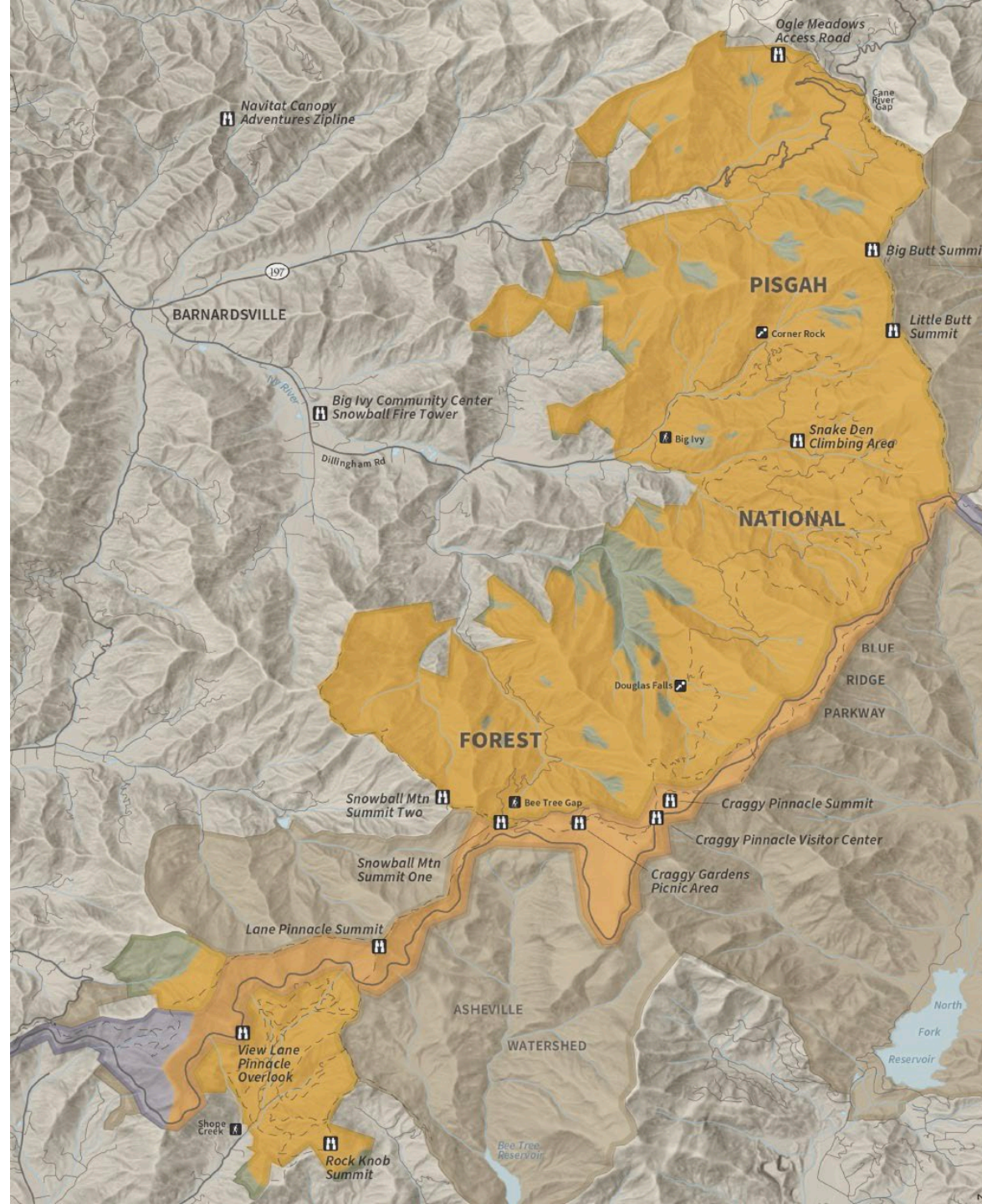




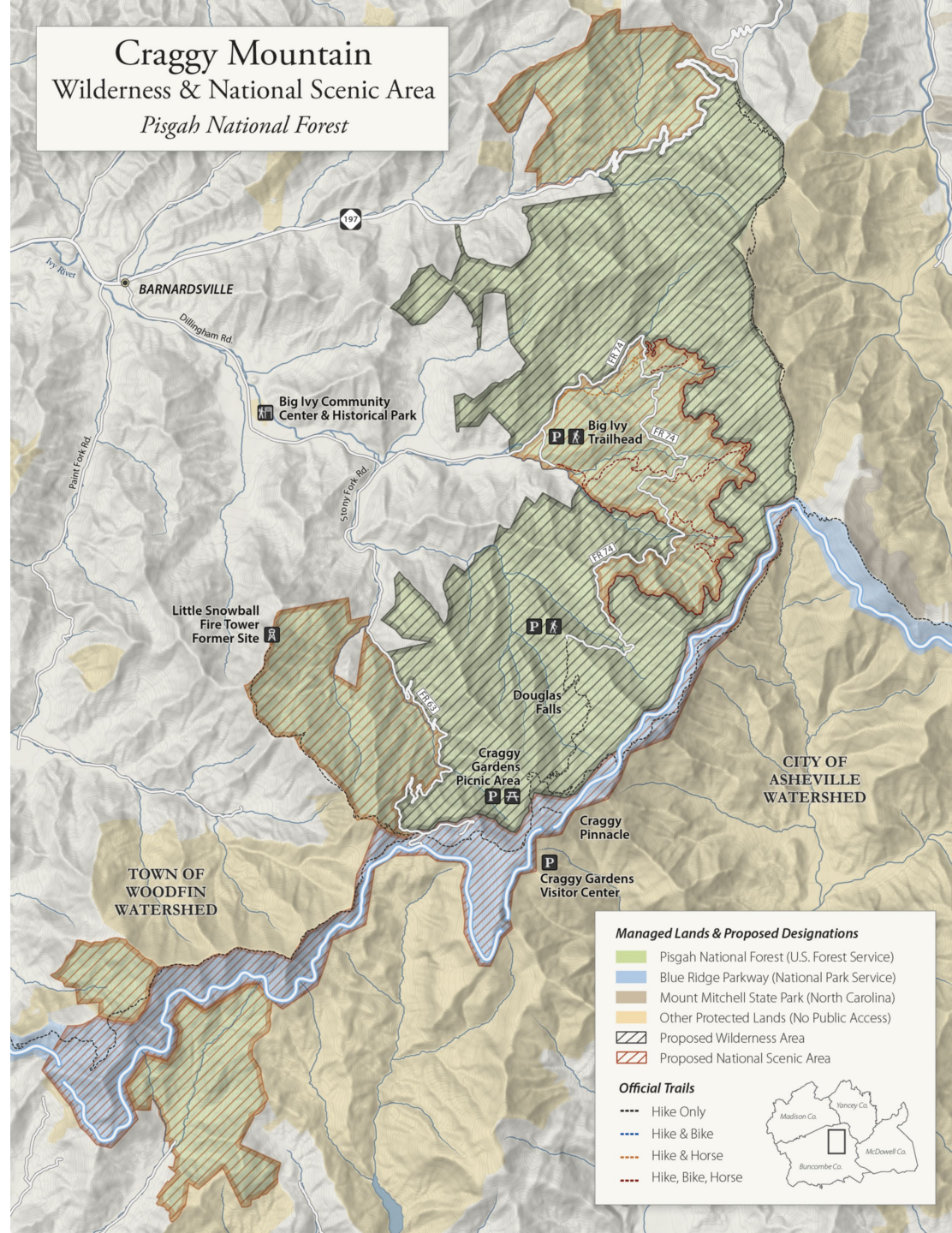


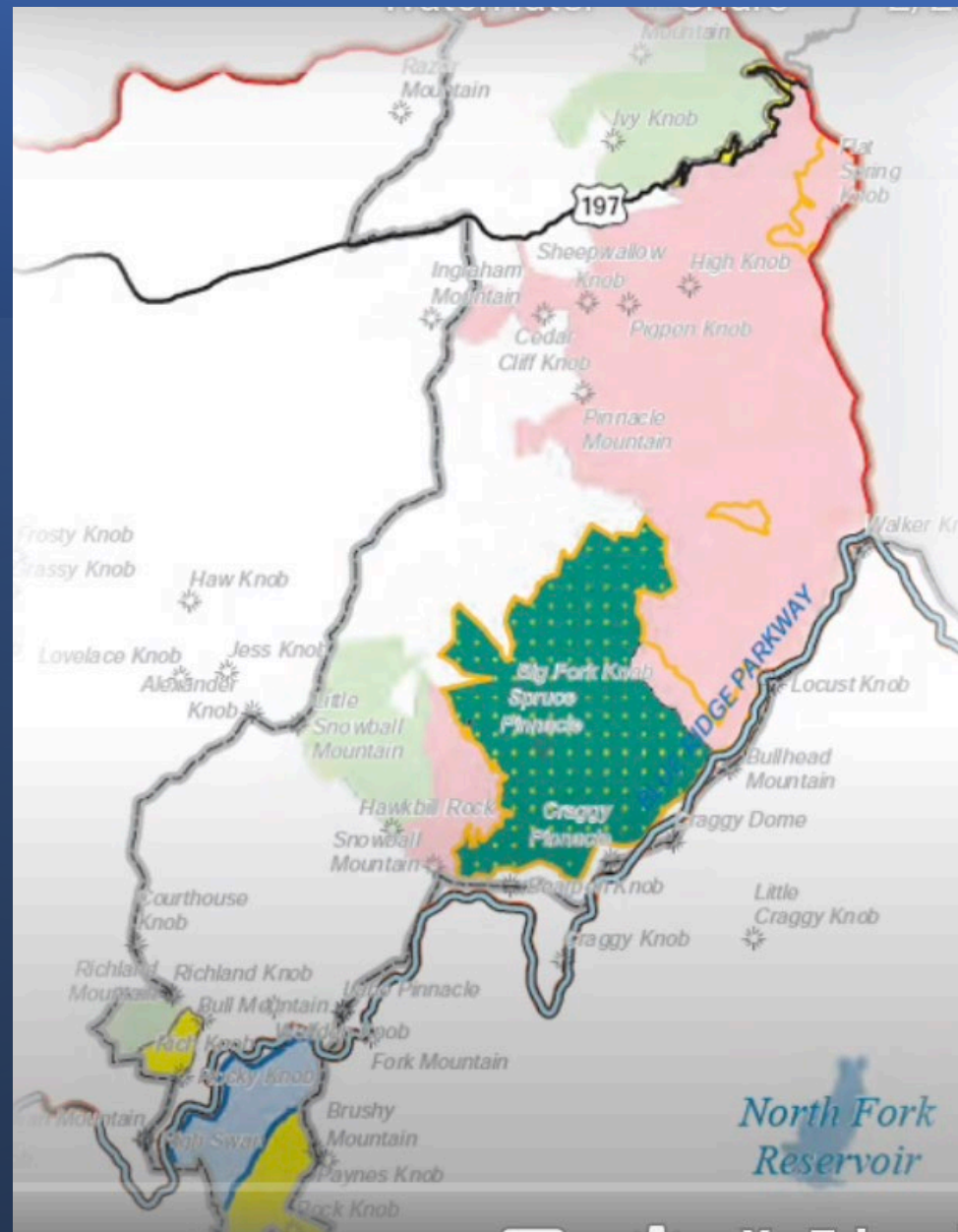




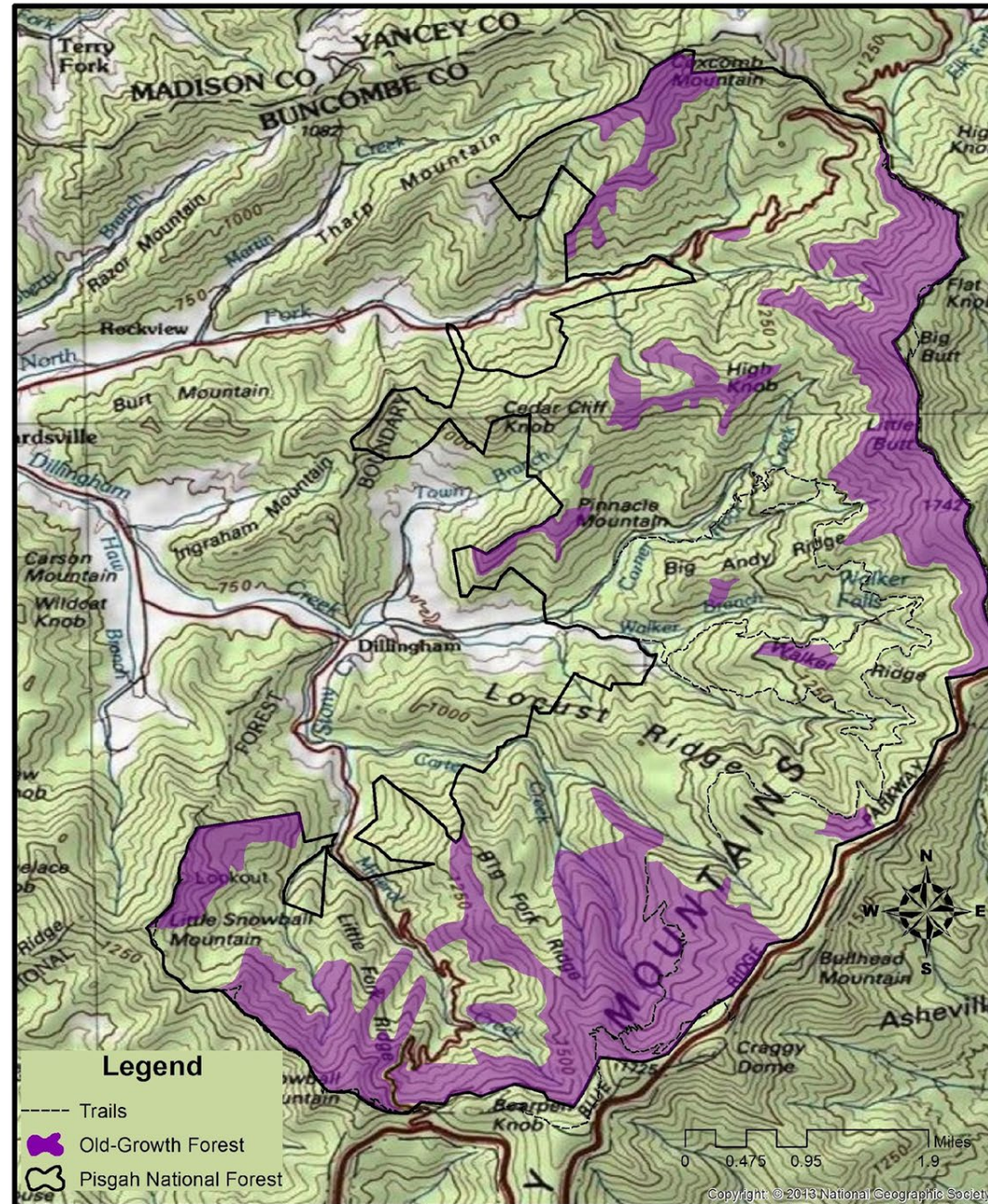


Craggy Mountain
Wilderness & National Scenic Area
Pisgah National Forest





Inventoried Old-Growth Forest at Big Ivy



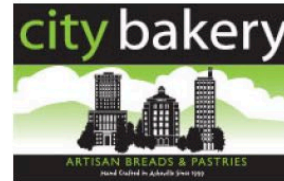




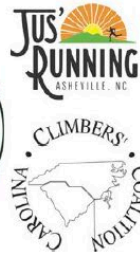


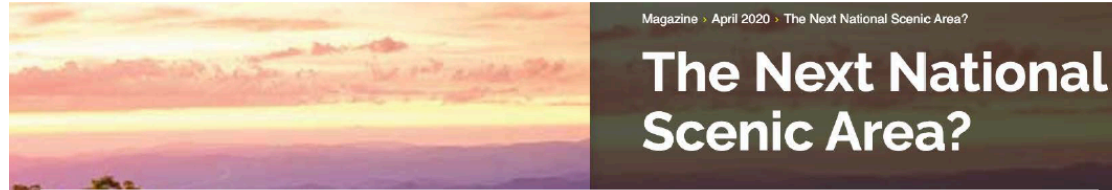


Craggy National Scenic Area is supported by more than 150 businesses and organizations



sylvansport





The Next National Scenic Area?

Rural neighbors build a national coalition to protect a wild, ancient forest as the Craggy National Scenic Area

Four years ago, a small group of Appalachian farmers, teachers, and carpenters sat around a wobbly table in their community center. They were worried: logging threatened the old-growth forest that surrounded their valley. So they began spitballing ideas about how to save it. They sketched out a plan that included door-to-door conversations, flyers at the local gas station, and a community meeting later that month. “We didn’t know what we were doing,” admitted Steven McBride, one of the neighbors around the table. “But we had to try. We just decided to go for it and got to work.”

Sierra

THE MAGAZINE OF THE SIERRA CLUB

CLIMATE & ENERGY LANDS & WATERS ADVENTURE LIFESTYLE MAGAZINE

North Carolina Needs More Wilderness

The Big Ivy watershed would be a good place to start

Smoky Mountain **news**



Give Craggy extra protection

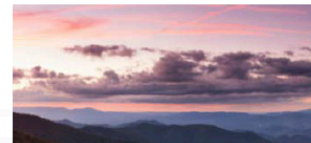
Don't cut Big Ivy

Posted on October 7, 2016 by Xpress

WRITTEN BY **DON HENDERSHOT**

WEDNESDAY, MARCH 04, 2020

ENVIRONMENT



**Speak for the Trees:
Big Meeting for Big
Ivy's Old-Growth
Forests**

CAROLINA
Public Press

Buncombe seeks permanent federal protection of 16,000 acres

by Jack Igelman · April 27, 2020

Big Ivy draws big crowd in talk over logging

Tonya Maxwell tmaxwell@citizen-times.com

Published 2:50 p.m. ET Feb. 6, 2015 | Updated 2:58 p.m. ET Feb. 6, 2015

[View Comments](#)



BARNARDSVILLE – If a U.S. Forest Service meeting in the Big Ivy community is any indication, the collaboration the agency hopes to foster looks a lot like an abandoned mountain road — uphill, winding and pitted, but passable. Probably.

More than 200 people packed into the Big Ivy Community Center on Thursday to ask questions of Forest Service officials about the future of their corner of the Pisgah National Forest. Officials later estimated that 75 people showed up who could not fit inside the crowded venue.

Mostly, the standing-room only crowd wanted to talk logging. And most of that talk — from residents concerned about their spring water, businesspeople who use their lands to host weddings with picture-perfect backdrops, professors who take their classes into the forest and elementary school-aged kids — centered on a single, clear sentiment: Don't cut Big Ivy.

NEWS | MAY 1, 2020

Buncombe County Commission unanimously passes Craggy Mountain resolution

Buncombe telling Congress to create wilderness at Big Ivy

Emily Patrick epatrick@citizen-times.com

Published 7:37 p.m. ET Sept. 20, 2016 | Updated 7:18 a.m. ET Sept. 21, 2016

[View Comments](#)



The Buncombe County Board of Commissioners has unanimously moved to protect thousands of acres of forest north of Asheville, but the ultimate power to protect the land rests with Congress.

**RESOLUTION SUPPORTING THE RECOMMENDATION AND DESIGNATION OF
CRAGGY MOUNTAIN WILDERNESS AND NATIONAL SCENIC AREA IN
BUNCOMBE COUNTY**

- WHEREAS, the Craggy-Big Ivy section of Pisgah National Forest in Buncombe County is one of the most popular and ecologically important recreation destinations in Southern Appalachia, with prized trout streams, rare wildlife, waterfalls, swimming holes, rugged trails, and scenic overlooks that attract tens of thousands of outdoor enthusiasts annually to Buncombe County; and
- WHEREAS, the Craggy-Big Ivy section of Pisgah National Forest contains 4,000 acres of old-growth forest—one of the largest old-growth forests in the East; and
- WHEREAS, Craggy-Big Ivy protects the viewshed from Craggy Gardens, the most visited destination and most photographed spot on the Blue Ridge Parkway; and
- WHEREAS, Craggy-Big Ivy includes one of the most popular stretches of the 1,175-mile Mountains to Sea Trail, North Carolina’s state trail and one of the country’s iconic hiking footpaths; and

WHEREAS, Buncombe County currently has no wilderness areas as do Haywood County, Jackson County, Macon County, Clay County, Graham County, and Burke County who have federally designated wilderness areas that are major drivers of outdoor recreation and tourism both regionally and nationally; and

WHEREAS, The proposed Craggy Mountain Wilderness and National Scenic Area are located less than 15 miles from downtown Asheville would provide significant recreation and tourism benefits to the county and the region;

NOW, THEREFORE, BE IT RESOLVED by the Board of Commissioners for the County of Buncombe as follows:

This resolution will support the permanent protection of 16,000 acres of old-growth forests, waterfalls, scenic views, trout streams, and trail networks less than 15 miles from downtown Asheville. The protected area will include:

1. That a 16,000-acre National Scenic Area and embedded 8,693-acre Wilderness Area protecting the hiking, biking, and equestrian trail networks, waterfalls, clean drinking water, recreational opportunities, and panoramic vistas and viewsheds from Craggy Gardens, the Blue Ridge Parkway, and the Mountains to Sea Trail be recommended for designation by the U.S. Forest Service and designated by the U.S. Congress;
2. That a copy of this resolution be sent to the U.S. Forest Service and our Congressional delegation;
3. That this resolution be effective upon its adoption.

Adopted on this 21st day of April, 2020.

KEEP CRAGGY WILD

Support North Carolina's First National Scenic Area



Proposed Wilderness and National Scenic Area in Craggy Mountains

