



# COVID-19 Update

---

*Presented by*

**Stacie Saunders**

Public Health Director

4 January 2022



# Current Situation: Weekly Metrics

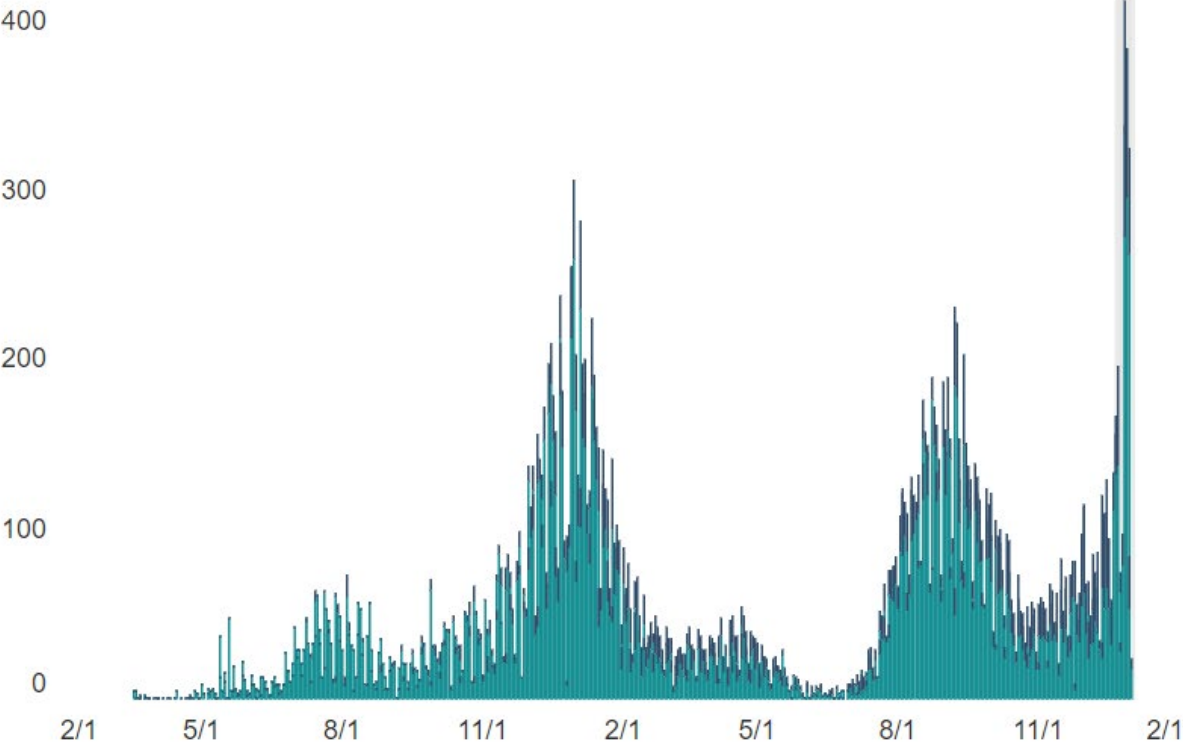
Metric	Value	Dark Green	Light Green	Yellow	Orange	Red
Cases per 100,000 population per week	654	≤ 4	5 - 9	10 - 50	51 - 100	≥ 101
Diagnostic test result positivity rate	13.7%	≤ 2.9%	3.0% - 4.9%	5.0% - 7.9%	8.0% - 10.0%	≥ 10.1%
COVID-19 deaths per 100,000 population per week	1.5	≤ 0.1	0.2 - 0.4	0.5 - 1	1.1 - 2	≥ 2.1
Percent inpatient hospital beds occupied with COVID-19	9.0%	≤ 5.0%	5.0% - 10.0%	10.0% - 15.0%	15.0% - 15.0%	≥ 15.0%
Percent ICU beds occupied with COVID-19	21.6%	≤ 60.0%	61.0% - 70.0%	71.0% - 80.0%	81.0% - 90.0%	≥ 91.0%
Percent total population partially vaccinated	68%	≥ 70.0%	50.0% - 69.9%	40.0% - 49.9%	30.0% - 39.9%	0.0% - 29.9%
Percent total population fully vaccinated	64%	≥ 70.0%	50.0% - 69.9%	40.0% - 49.9%	30.0% - 39.9%	0.0% - 29.9%

Updated 1.3.2022



# Impact of Omicron Variant

Cases by Date of Specimen Collection - Buncombe County - Starting 3/2/2020



**Total Cases  
Buncombe  
County  
34,007**

**Molecular  
(PCR) Positive  
Cases  
27,199**

**Antigen Positive  
Cases  
6,808**

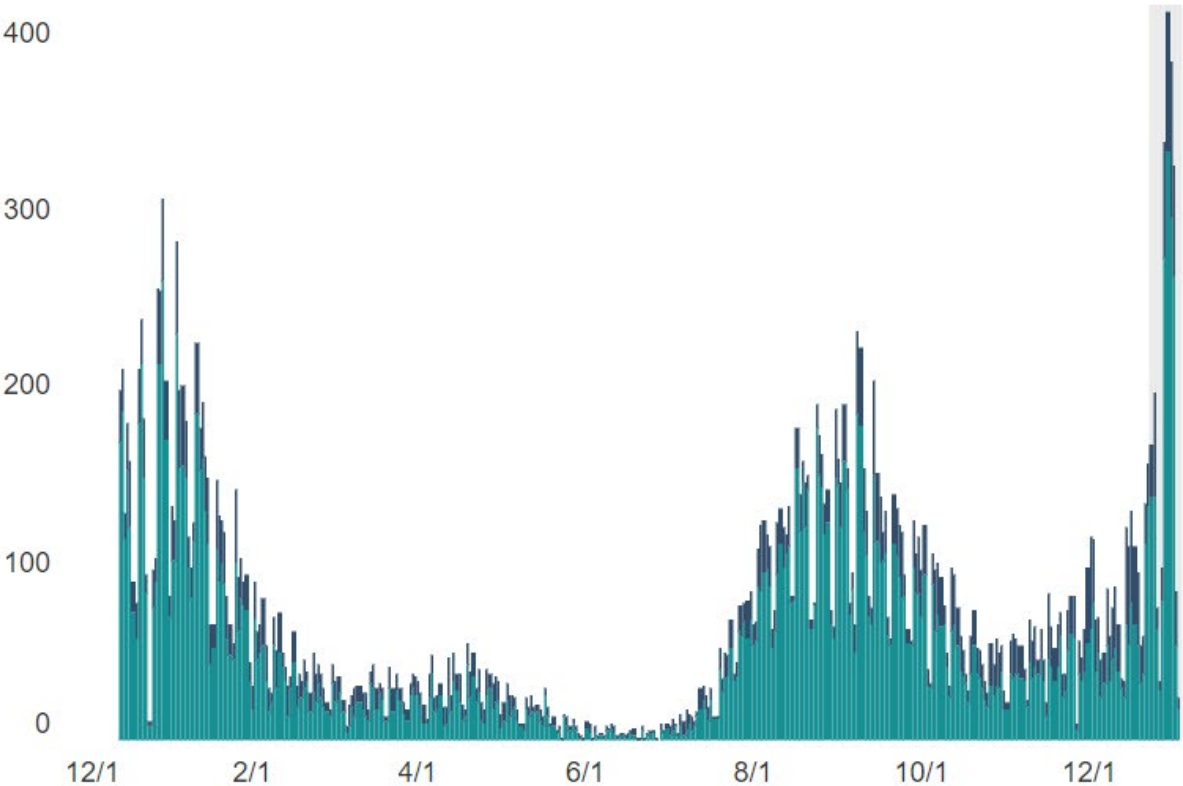
Specimen collection  
date missing for 9  
cases.

Updated 1.3.2022



# Impact of Omicron Variant

Cases by Date of Specimen Collection - Buncombe County - Starting 12/14/2020



Total Cases  
Buncombe  
County  
26,602

Molecular  
(PCR) Positive  
Cases  
20,424

Antigen Positive  
Cases  
6,178

Specimen collection  
date missing for 9  
cases.

Updated 1.3.2022



# Face Covering Requirement

- ☐ Currently set to expire on January 5
- ☐ Recommend extend until February
  - ☐ Minimum until Feb 9 (Review at Feb 8 BoC)
  - ☐ Strongly recommending until Feb 23 (Review at Feb 22 BoC)
- ☐ Rationale for extension:
  - ☐ Rising cases – Significantly higher than Jan 2021 surge
  - ☐ Omicron has greater transmissibility than Delta
  - ☐ Hospitalizations on the rise
  - ☐ New therapeutics available but in limited supplies
- ☐ Higher case rates may be tolerated in the future when at-home therapeutics are in greater supply to help keep hospitalizations down

Updated 1.3.2022





# COVID-19 Testing Initiatives



# Current Testing Efforts

## Harrah's Convention Center

- Mon-Fri, 10am-2pm\*
- **Register at the StarMed/StarMount website**

## AB Tech

- Sundays from 12n-4pm
- **Register at the StarMed/StarMount website**

## Other Area Testing Partners

- Retail pharmacies: Walgreens, CVS, etc.
- Urgent Cares: Range Urgent Care, FastMed, Mercy Urgent Care, etc
- Other providers available at Find My Testing Place website

## School Systems

- Rapid Antigen Testing of K-12 population (Symptoms at school, Suspected cases, and close contacts)

## Community Health Workers

- IFPHA has distributed approximately 400 rapid at-home kits via Community Health Workers



# Testing Efforts on the Horizon

## Community Distributed Rapid At-Home Kits

- Build on success of partner Community Health Workers
- Place and distribute rapid at-home test kits in community locations
- Purchase order submitted up to 5000 kits (contingent on vendor available supply)
- Utilizing funds allocated to Local Public Health Departments by NC DHHS for testing support

## Additional Testing Surge Resources

- Opportunity to request FEMA support (much like vaccine efforts that ended December 14) – pending
- Opportunity to request additional NC DHHS testing support for limited time - pending





# COVID-19 Vaccine Efforts



# Current Vaccine Efforts

## BC HHS FIXED SITE

- Tues-Fri, 9a-4p Health Department at 40 Coxe
  - **Administering 300+ per week**

## SATURDAYS at SCHOOL COMMUNITY OUTREACH – Saturdays, 9a-4p

- Nov. 13 – Asheville Middle School (BCHHS) – **reached 393 people (246 pediatric 1<sup>st</sup> doses)**
- Nov. 20 – North Buncombe High School (BCHHS) – **reached 149 people (60 pediatric 1<sup>st</sup> doses)**
- Dec. 4 – Clyde A. Erwin High (BCHHS) - **reached 250 people (40 pediatric 1<sup>st</sup> doses, 74 pediatric 2<sup>nd</sup> doses)**
- Dec. 4 – Roberson High School (MAHEC/FEMA) – **reached 234 (48 pediatric 1<sup>st</sup> doses, 49 pediatric 2<sup>nd</sup> doses)**
- Dec. 11 – Charles D. Owen High (BCHHS) - **reached 44 (16 pediatric 1<sup>st</sup> doses, 7 pediatric 2<sup>nd</sup> doses)**
- Dec. 11 – Reynolds High School (MAHEC/FEMA) - **reached 139 (21 pediatric 1<sup>st</sup> doses, 30 pediatric 2<sup>nd</sup> doses)**

## OTHER PEDIATRIC VACCINE EFFORTS

- Edington Center Pediatric Vaccine Site closed December 18, **administered 631 doses**

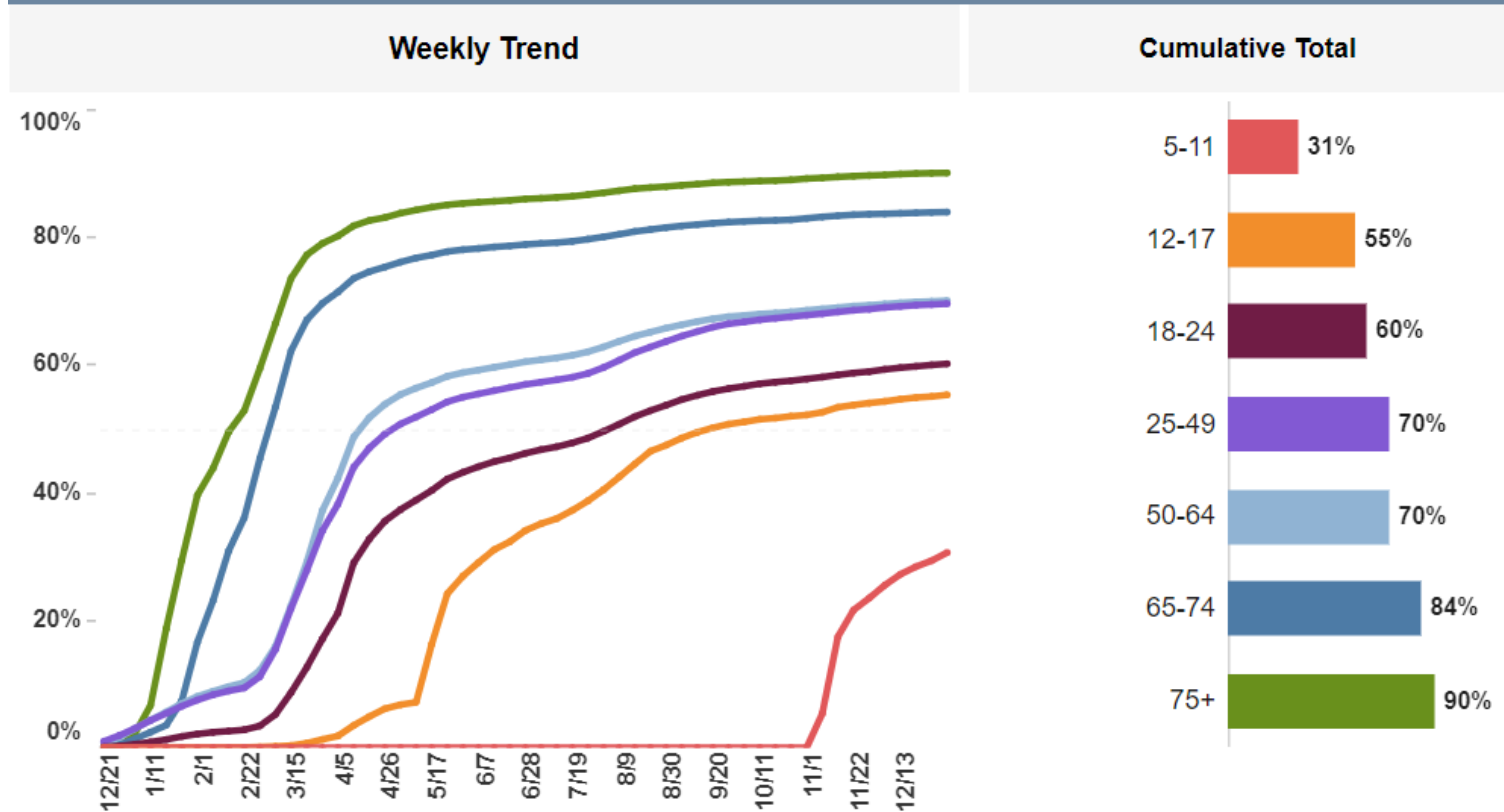
## OTHER PEDIATRIC VACCINE EFFORTS

- Walgreens, Ingles, CVS and other pharmacies
- Some Medical Providers



# Vaccine Uptake by Age

Percent of Population Vaccinated with at Least One Dose by Age – Buncombe County



- ❑ About 1/3 of 5-11 yo have received at least one dose, increase of 6 percentage points
- ❑ 12-17 yo have almost caught up to 18-24 yo
- ❑ 71% of eligible population has received one dose
- ❑ Over 40% of Fully Vaccinated have received 3<sup>rd</sup>/Booster

Updated 1.3.2022



# Future Vaccine Planning

## Give Your New Year a Boost

- Media Campaign focused on booster reminders for 18+
- Social Media, PSAs, etc
- Renew/Refresh Local and Regional Campaigns

## Boosters for Adolescents

- Recent FDA recommendations for booster for 12-15, awaiting CDC recommendation
- Reminder: CDC recommended Booster for 16 & 17 on December 9
- Initial planning occurring for adolescent booster by Public Health Team, engaging School partners in coming days
- Build on success of previous events



# Vaccine Providers

Visit the NCDHHS website for vaccine providers:  
**[myspot.nc.gov](https://myspot.nc.gov)**



# Things to Remember

- Get vaccinated...and get boosted when eligible
- Get tested if exposed or experiencing symptoms
- Get your face covering...and put it on in public indoor spaces
- Get some distance between you and others
- Get those hands clean...sanitize and wash often

