



COVID-19 Update

Presented by

Stacie Saunders

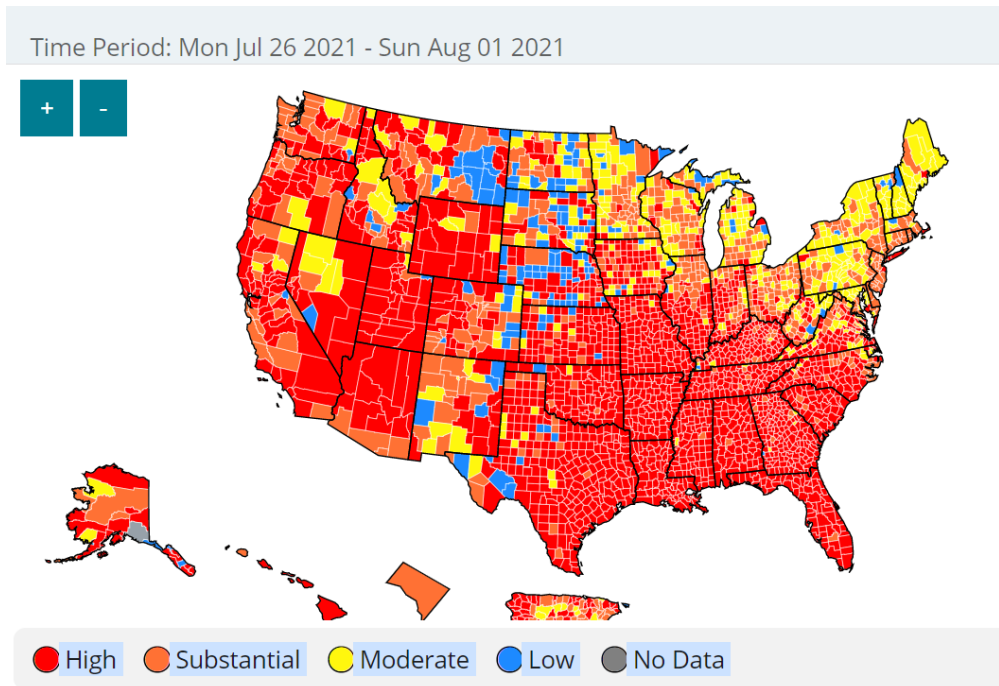
Public Health Director

3 August 2021



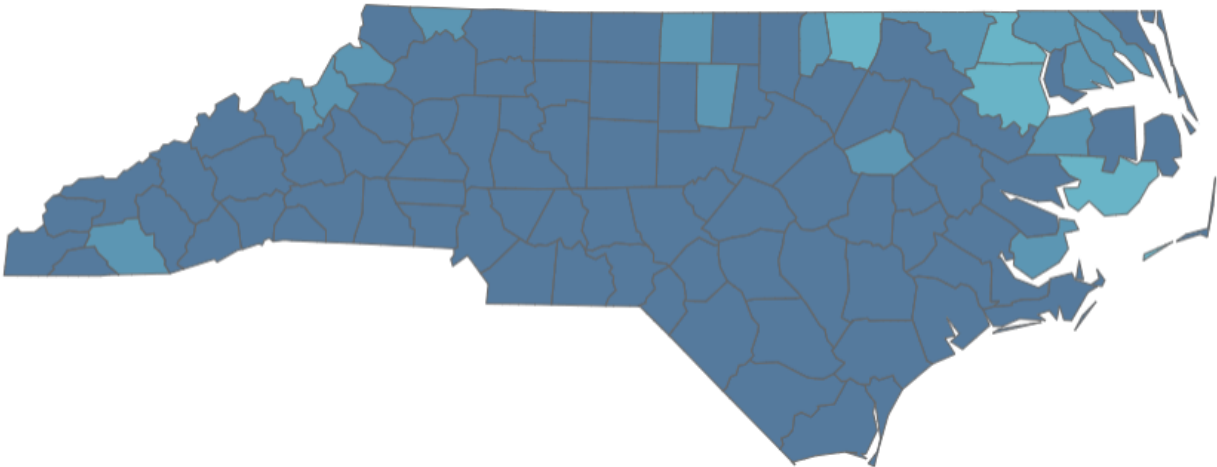
Objectives

- What is our current COVID-19 situation
- What are we currently doing
- What do we need to do now
- What might we do in the future



Current Situation: Cases per 100,000 per week

County Map by Cases per 100,000 Residents (Molecular (PCR) and Antigen)
(Click to highlight map, unclick to revert map)



Updated 8/2/21



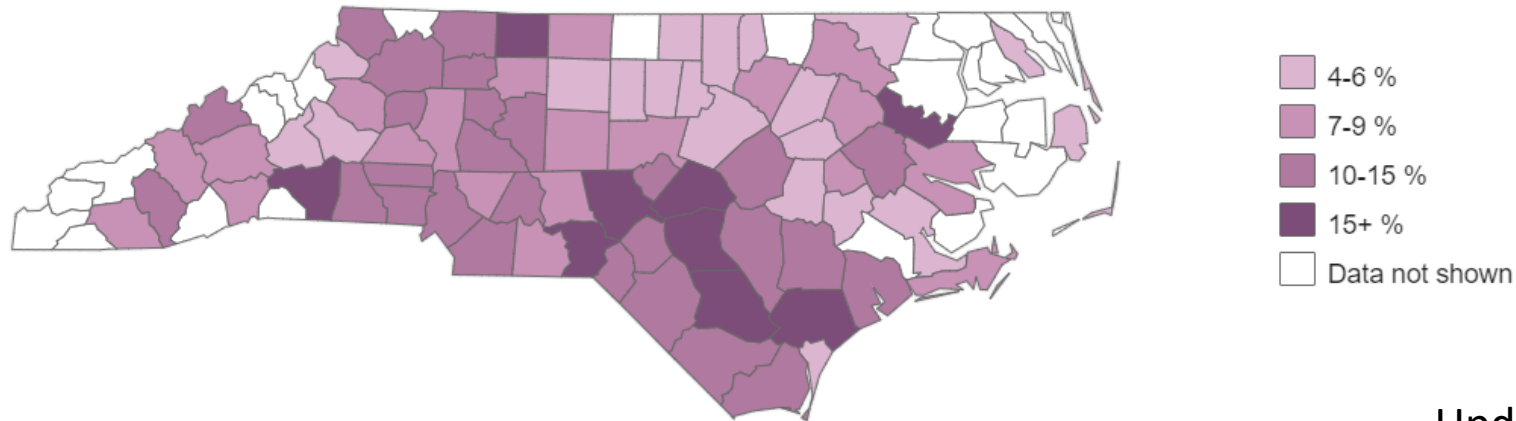
Current Situation: Percent Positivity

Percent Positive by County



Which counties are seeing a decline or sustained level of percent of tests that are positive?

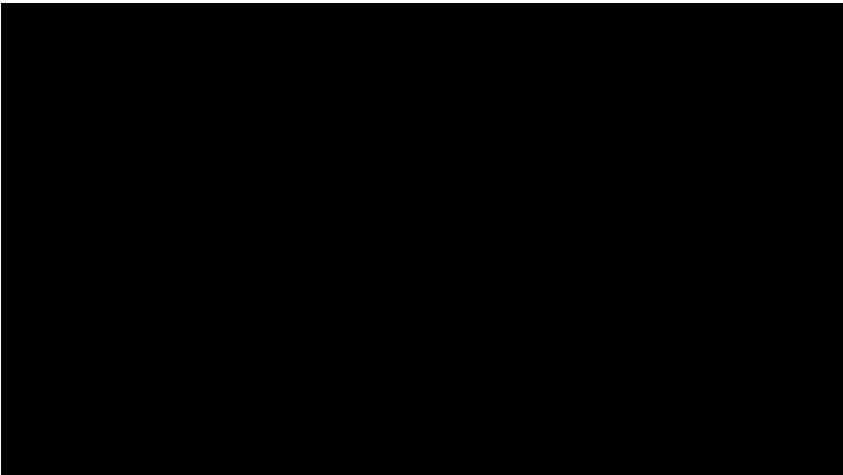
It is important to recognize that the amount of testing being conducted varies across counties. Because the percent positive is calculated using only molecular (PCR) testing data reported electronically in to NC COVID, which is a subset of total tests reported, county-level percent positive rates may be impacted by how many of the total tests for residents in the county were reported electronically through NC COVID.



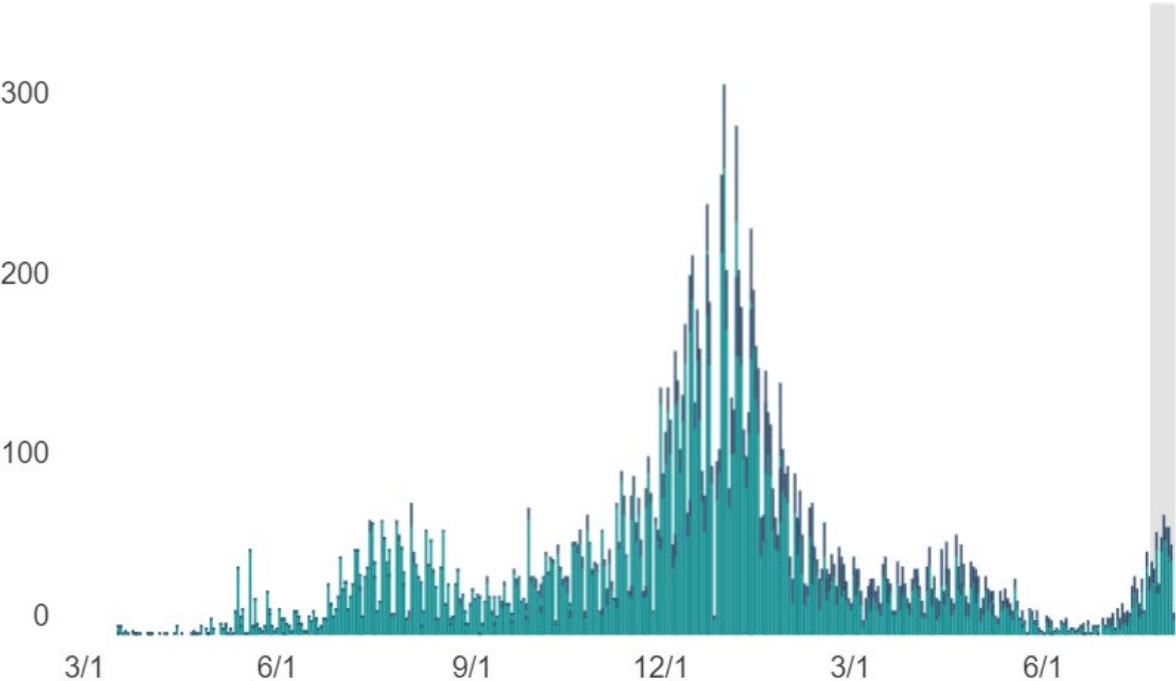
Updated 8/2/21



Current Situation: Epi Curve



Cases by Date of Specimen Collection - Buncombe County



TOTAL CASES
Buncombe County

18,932

MOLECULAR (PCR)
POSITIVE CASES

15,586

ANTIGEN POSITIVE
CASES

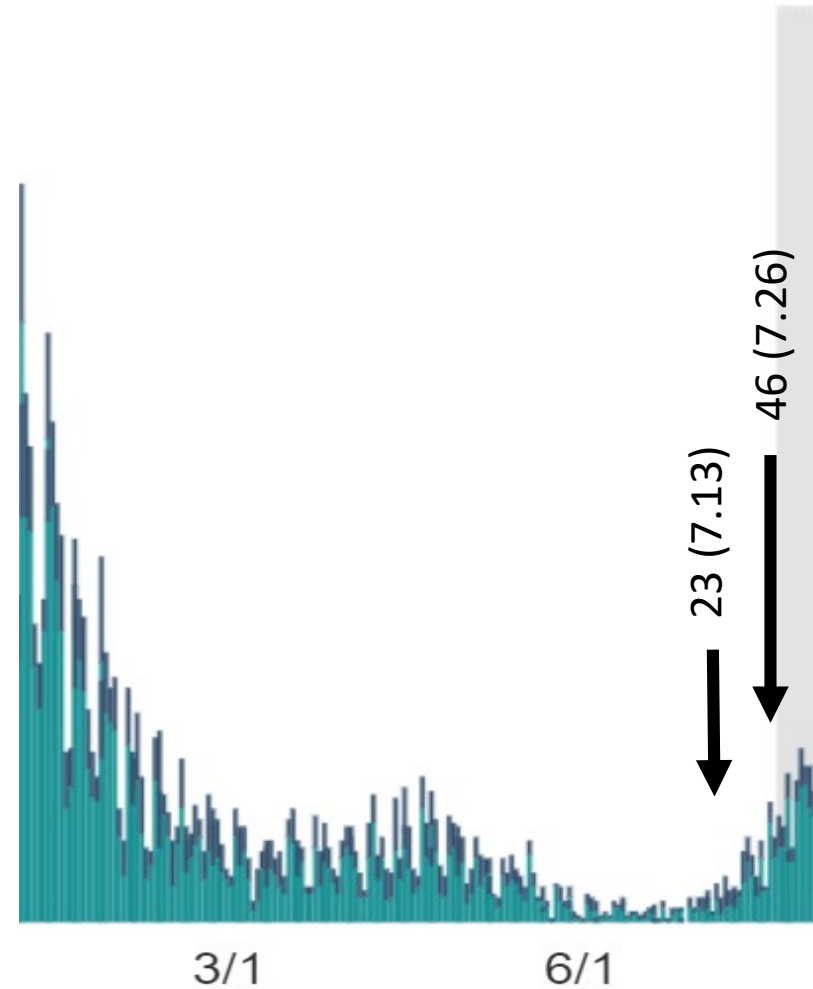
3,346

Specimen collection date
missing for 0 cases.

Updated 8/2/21



Current Situation: Epi Curve

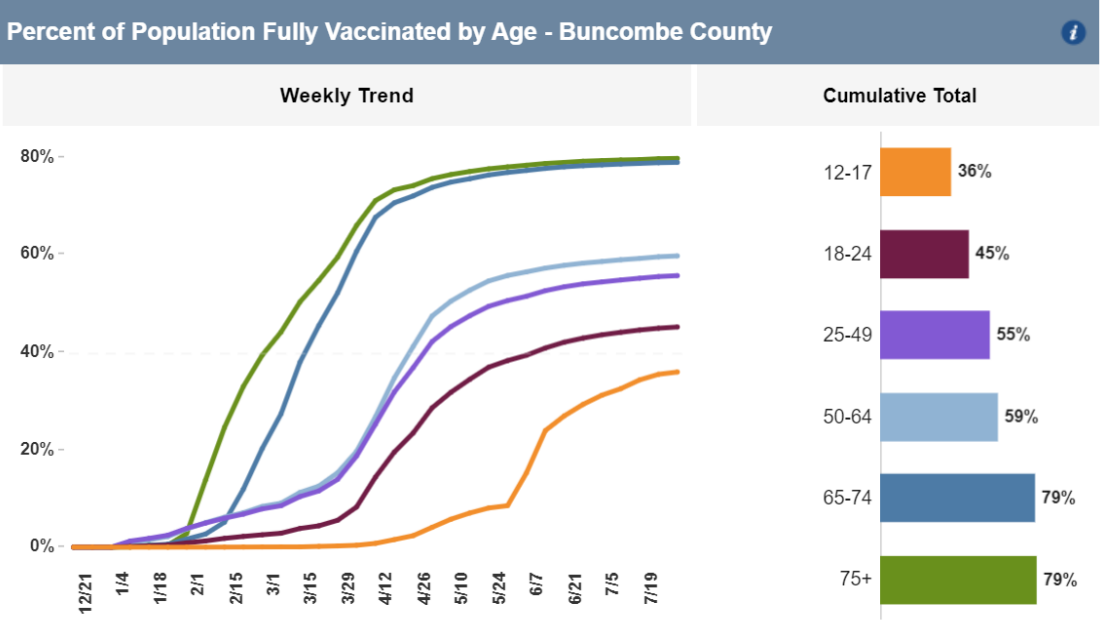
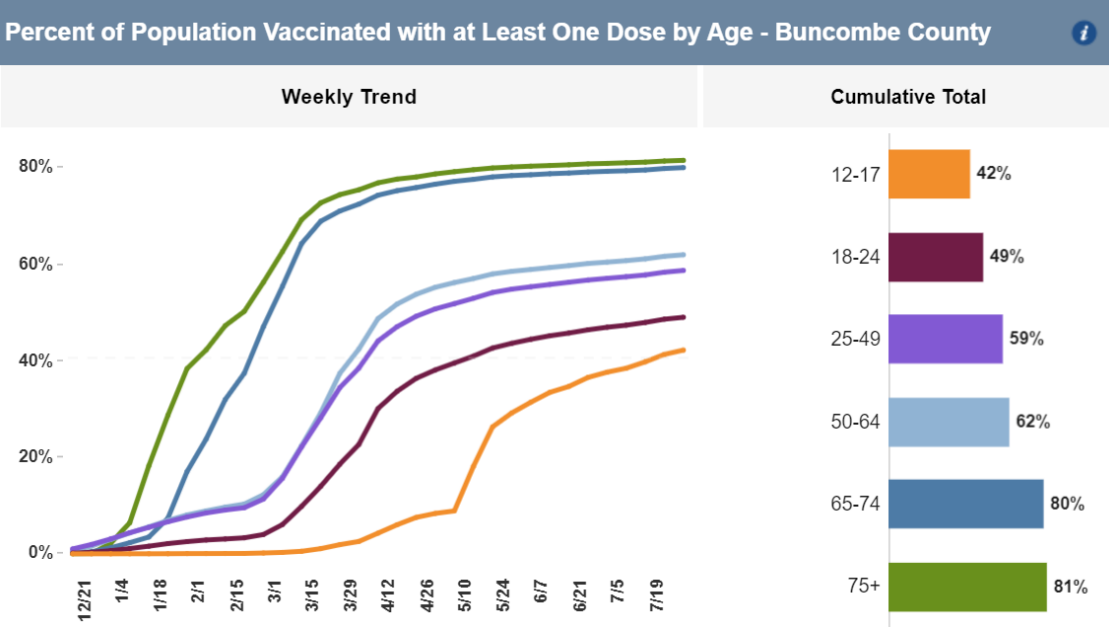


Doubling Time
= 2 weeks

Updated 8/2/21



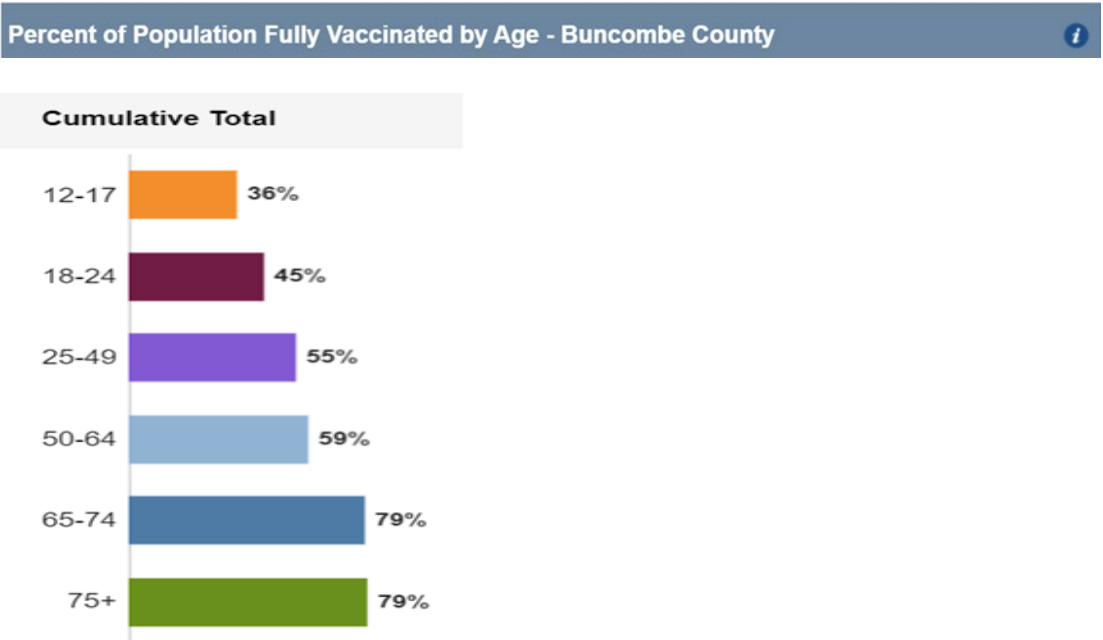
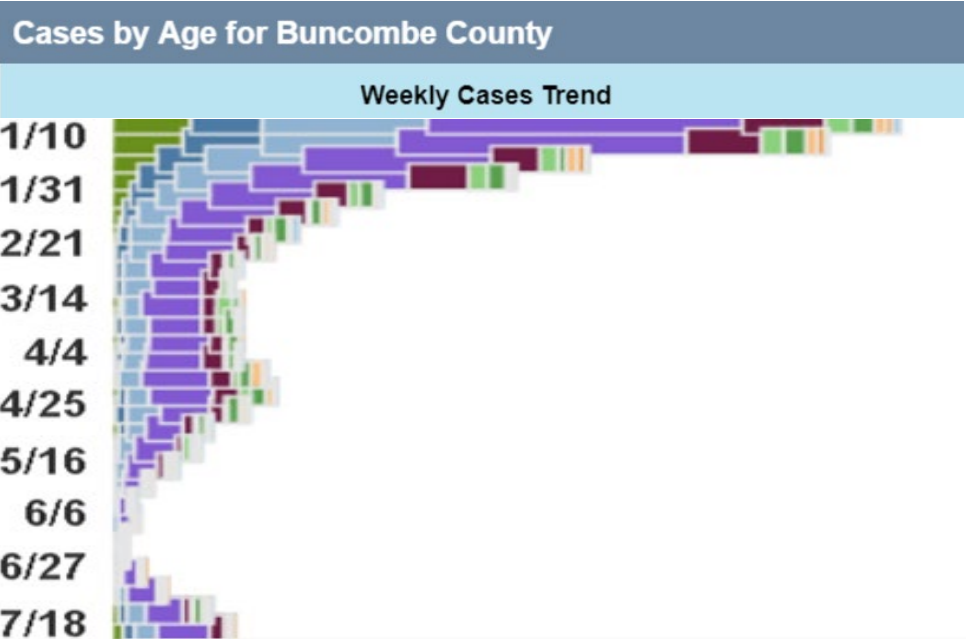
Current Situation: Vaccine Rollout



Updated 8/2/21



Current Situation: New cases by age



Updated 8/2/21



Action Taken: Fixed and Mobile Operations Vaccine Distribution

- Continue BC HHS Fixed Site at 40 Coxe, Walk-in or by appointment
- Continue BC HHS Outreach Operations
 - 12 School-based vaccinations clinics throughout Buncombe County over the summer
 - Community center based vaccination events
 - Vaccination opportunities with local industries including restaurants, manufacturing, breweries, agriculture, job fairs
 - Provide homebound vaccinations for those who cannot access the vaccine due to health limitations
 - Vaccination opportunities at concerts, festivals, community events, and baseball games
 - Work with partners to meet the vaccination needs of unhoused
- Buncombe County serves as a hub for regional vaccine distribution



Action Taken: FEMA Vaccine Resource

- MAHEC partner coordinating locations across WNC region
- Week 1: Asheville Outlets - ~100 vaccine administered
- Week 2: Canton Recreation Park (Haywood)
- Week 3: Ingles in Swannanoa
- Week 4: Asheville Outlets
- Capable of deploying smaller outreach teams for one time events



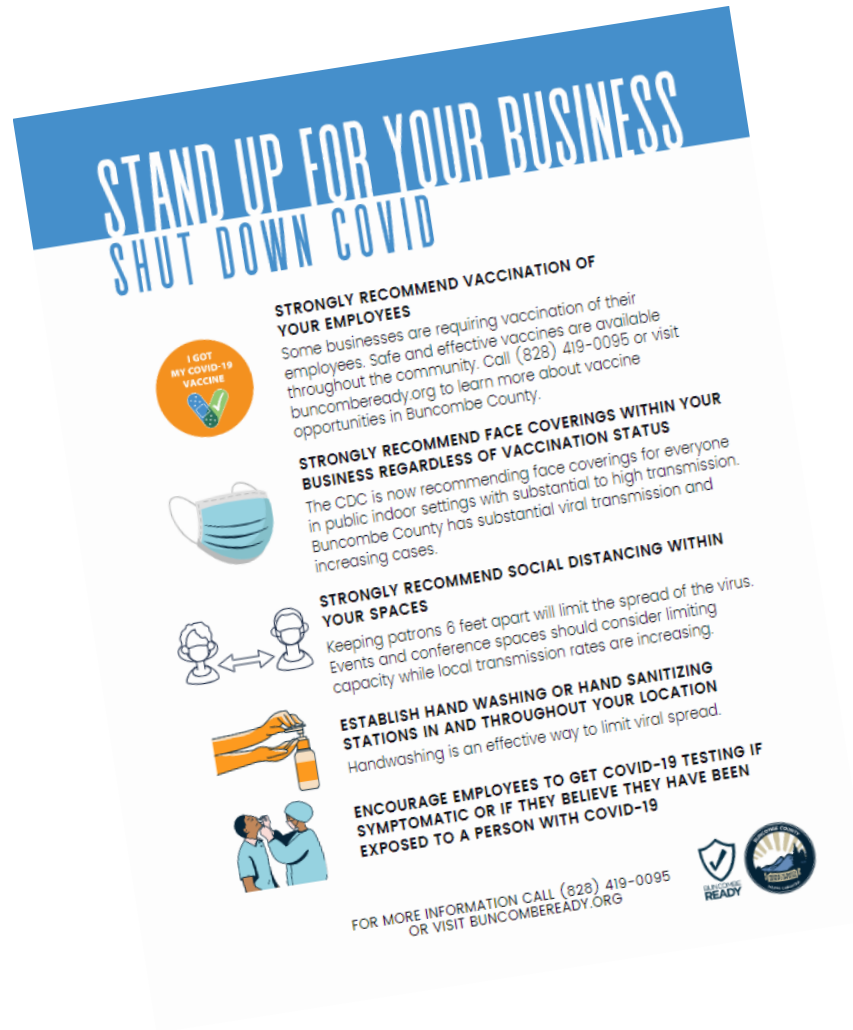
Action Taken: Summer Incentive Cards



- BC HHS invited to participate in DHHS expansion
- Cards will arrive August 4
- Strict DHHS and Buncombe County policies regarding security, tracking and use of cards
- Will be utilized in fixed vaccine site and outreach events
- DHHS program expected to sunset end of August 2021



Action Taken: Outreach to Businesses



STAND UP FOR YOUR BUSINESS SHUT DOWN COVID

Dear Business Owners, Restaurateurs, and Event/Conference Space Managers,

There is no doubt that the last year and a half has been incredibly stressful and difficult on our community in so many ways including significant impacts to businesses and our local economy. Thank you for the steps that you have taken in the last 18 months to protect the community and those you serve.

For a few weeks, the burden of COVID-19 in our community was lighter and it seemed we were heading into brighter days thanks to our community's commitment to fighting back against COVID-19. More than 52% of our total population is fully vaccinated. However, that leaves almost one out of every two of us still unvaccinated and now with the highly transmissible Delta variant widely circulating throughout communities in North Carolina, we are seeing substantial viral transmission and significant increases in new cases in Buncombe County. The level of transmission is rising not only in Buncombe County but all around us.

As business owners, there are things you can do to help stop the spread of COVID-19 right now. Layering and implementing these infection prevention measures can protect your patrons, reduce the risk of exposure to your employees, and help decrease the chances you experience an outbreak associated with your business or events.

Public Health strongly recommends you to consider these measures to protect your business, your patrons, the community and our economy. These are actions you can take as a business owner regardless of what statewide Executive Orders may be in place. Take action now, stand up for your business by shutting down COVID-19.

Thank you for your commitment and partnership throughout this pandemic.

Sincerely,

Stacie Turpin Saunders, MPH
Public Health Director
Buncombe County Health & Human Services

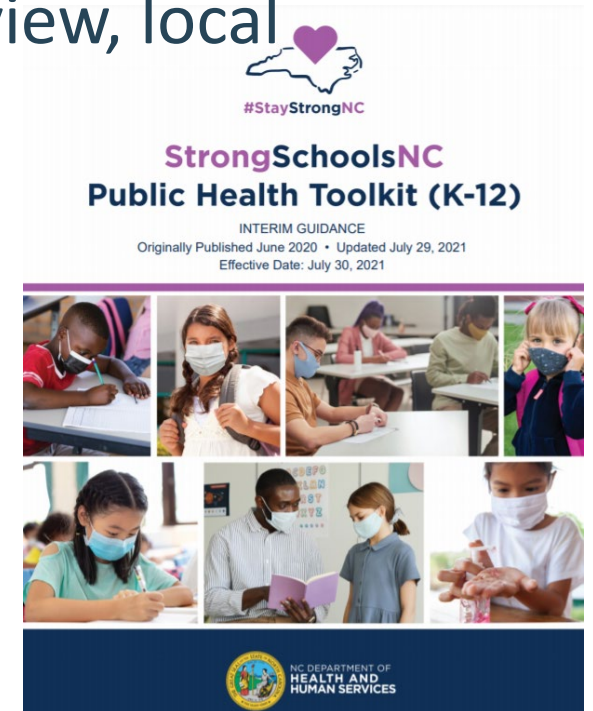
JULY 29, 2021



BUNCOMBE COUNTY

Action Taken: K-12 Recommendations

- BC HHS invited all schools to participate in Toolkit overview, local public health recommendations, and Q&A
- Covered changes in toolkit
- Local Public Health Recommendations included:
 - Universal masking in all K-12 schools for students and staff
 - Adoption of all “SHOULD” recommendations in the toolkit



Action Needed Now: Current Recommendations



Metric	Value	Dark Green	Light Green	Yellow	Orange	Red
Cases per 100,000 population per week	151	≤ 4	5 - 9	10 - 50	51 - 100	≥ 101
Diagnostic test result positivity rate	7.2%	≤ 2.9%	3.0% - 4.9%	5.0% - 7.9%	8.0% - 10.0%	≥ 10.1%
COVID-19 deaths per 100,000 population per week	0.38	≤ 0.1	0.2 - 0.4	0.5 - 1	1.1 - 2	≥ 2.1
Percent inpatient hospital beds occupied with COVID-19	4.9%	≤ 5.0%	5.0% - 10.0%	10.0% - 15.0%	15.0% - 15.0%	≥ 15.0%
Percent ICU beds occupied with COVID-19		≤ 60.0%	61.0% - 70.0%	71.0% - 80.0%	81.0% - 90.0%	≥ 91.0%
Percent total population partially vaccinated	55%	≥ 70.0%	50.0% - 69.9%	40.0% - 49.9%	30.0% - 39.9%	0.0% - 29.9%
Percent total population fully vaccinated	52%	≥ 70.0%	50.0% - 69.9%	40.0% - 49.9%	30.0% - 39.9%	0.0% - 29.9%



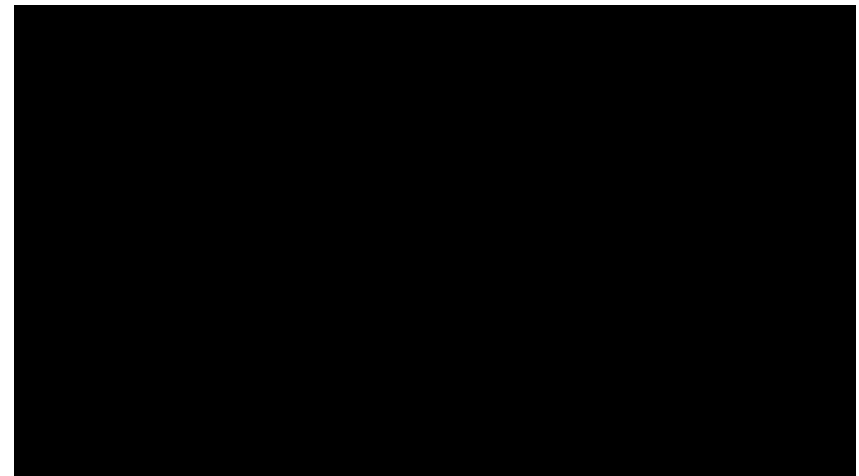
Action Needed Now: Current Recommendations

- Recommend establishment and implementation Buncombe County Government COVID-19 Vaccine Policy for Employees
- Recommend all indoor public spaces adopt prevention measures in the Stand Up document including requiring masks for staff and visitors regardless of vaccine status while county is in substantial or high transmission
- Recommend that all K-12 require universal masking for students and staff
 - Update as of 8.2.2021 @ 2100: ACS votes to universally mask K-12
- Recommend that all individuals mask up regardless of vaccine status when in all indoor public spaces if not already required by location while county is in substantial or high transmission



Action Needed Now: Future Recommendations

Metric	Value	Dark Green	Light Green	Yellow	Orange	Red
Cases per 100,000 population per week	151	≤ 4	5 - 9	10 - 50	51 - 100	≥ 101
Diagnostic test result positivity rate	7.2%	≤ 2.9%	3.0% - 4.9%	5.0% - 7.9%	8.0% - 10.0%	≥ 10.1%
COVID-19 deaths per 100,000 population per week	0.38	≤ 0.1	0.2 - 0.4	0.5 - 1	1.1 - 2	≥ 2.1
Percent inpatient hospital beds occupied with COVID-19	4.9%	≤ 5.0%	5.0% - 10.0%	10.0% - 15.0%	15.0% - 15.0%	≥ 15.0%
Percent ICU beds occupied with COVID-19		≤ 60.0%	61.0% - 70.0%	71.0% - 80.0%	81.0% - 90.0%	≥ 91.0%
Percent total population partially vaccinated	55%	≥ 70.0%	50.0% - 69.9%	40.0% - 49.9%	30.0% - 39.9%	0.0% - 29.9%
Percent total population fully vaccinated	52%	≥ 70.0%	50.0% - 69.9%	40.0% - 49.9%	30.0% - 39.9%	0.0% - 29.9%



Action Needed Now: Future Recommendations



- Majority of indicators (3 out of 5) in Orange then bring additional recommendations to Board for consideration
- Recommendations would include preventive measures, requirements, restrictions and strategies to reduce spread
 - Examples: Requiring mask in all indoor public spaces
- May require revisiting State of Emergency



Vaccine Providers

Visit the NCDHHS website for vaccine providers:
myspot.nc.gov

