



Comprehensive Plan CONSULTANT SELECTION PROCESS

Presented by

**Planning & Development
Department**



Consultant Role

Consultant to guide the planning process and provide services and support for the creation of a 20 year plan

Consultant Role:

- Engage citizens, staff, and the community in the process
- Compile and analyze data and prior plans
- Develop goals, policies, and actions to achieve the vision
- Draft the plan and present to Boards for feedback/adoption



Request for Proposals (RFP)

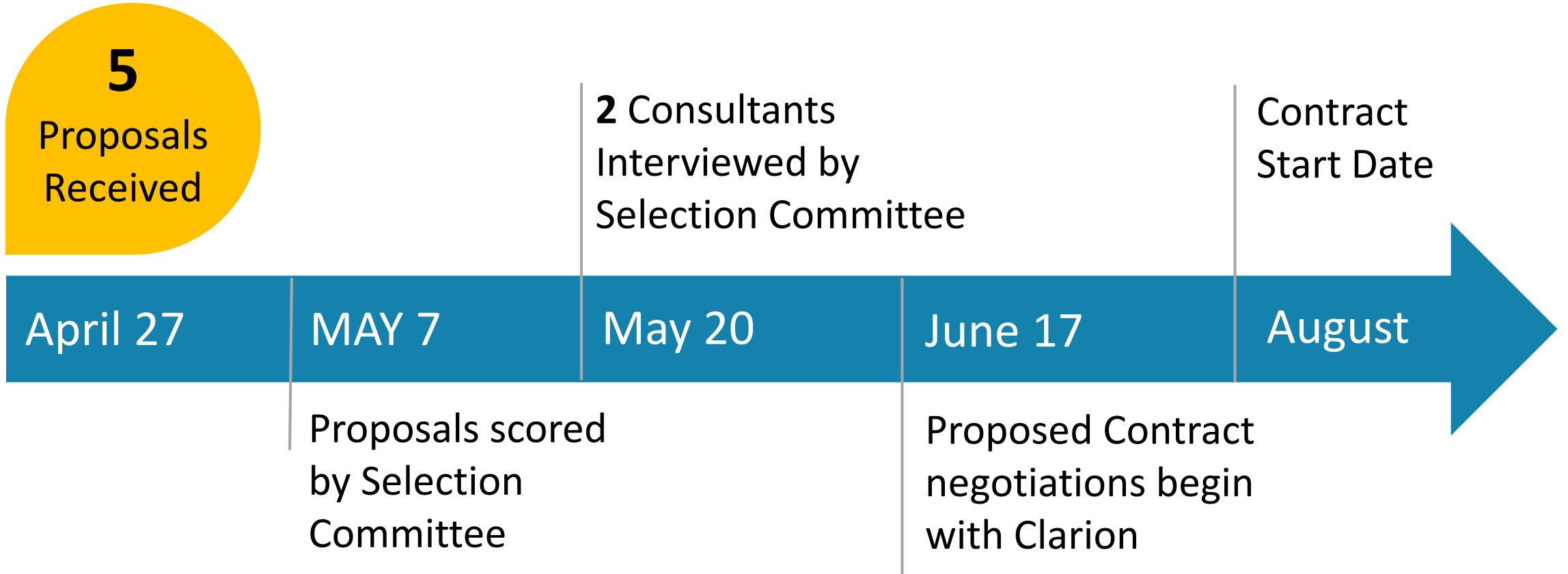
- 5 Proposals Received
- Scored by the Selection Committee:
 - Nancy Waldrop – Planning Board Chair
 - Rasheda McDaniels – CAPE
 - Jim Blanton – Libraries
 - Sybil Tate – County Manager’s Office
 - Timothy Love – County Manager’s Office
 - Jennifer Harrison – Agriculture & Land Resources
 - Nathan Pennington – Planning & Development
 - Gillian Phillips – Planning & Development
- 2 Consultants Interviewed by the Committee

➤ CLARION selected

- ❖ Scoring based on the RFP requirements:
 - Quality of previous work detail and design
 - Experience with similar communities
 - Experience creating a Comprehensive plan
 - Clear, realistic process and timeline
 - Equitable and inclusive public engagement
 - Robust communication techniques
 - Equity focus throughout
 - Addresses the core components needed
 - Adequate and effective use of budget
 - Sufficient staffing



Consultant Timeline



CLARION



TRAFFIC PLANNING AND DESIGN, INC.



NEMAC+FernLeaf



EQUINOX
balance through proper planning



RRC
ASSOCIATES



1

PHASE 1:
LAUNCH
PROJECT

Months
1-2

2

PHASE 2:
ESTABLISH THE
VISION AND
GOALS

Months
3-5

3

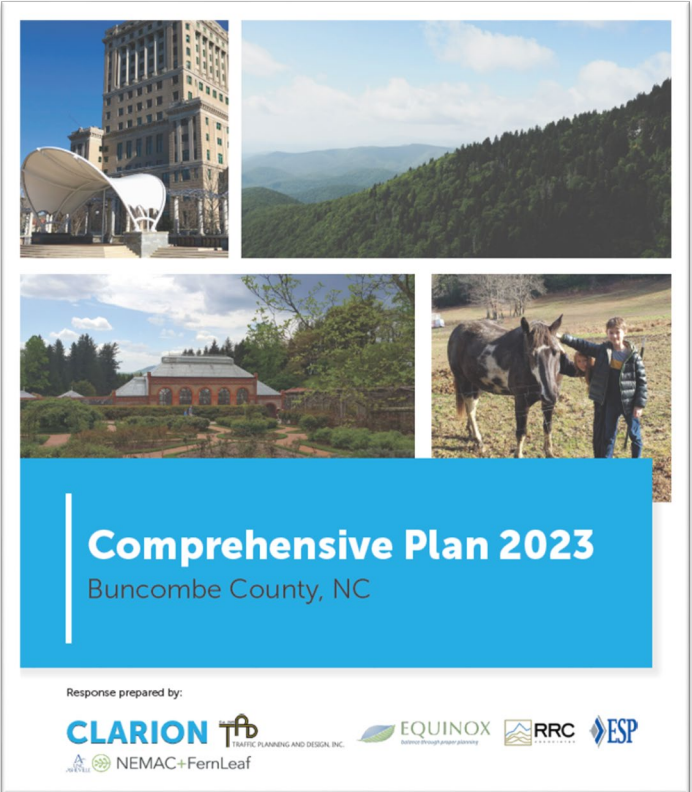
PHASE 3:
DEVELOP
POLICIES AND
STRATEGIES

Months
6-12

4

PHASE 4:
ADOPT PLAN

Months
13-21



BUNCOMBE COUNTY

