



Buncombe Madison Regional Hazard Mitigation Plan

Presented by

Angela Ledford

Emergency Management Division Manager - Emergency Services

Nathan Pennington

Director – Planning Department



BUNCOMBE COUNTY



Buncombe Madison Regional Hazard Mitigation Plan



Buncombe Madison Regional Hazard Mitigation Plan



BUNCOMBE COUNTY



Mitigation OVERVIEW



“mit-i-gate”

- 1: to cause to become less harsh or hostile.
- 2: to make less severe or painful.



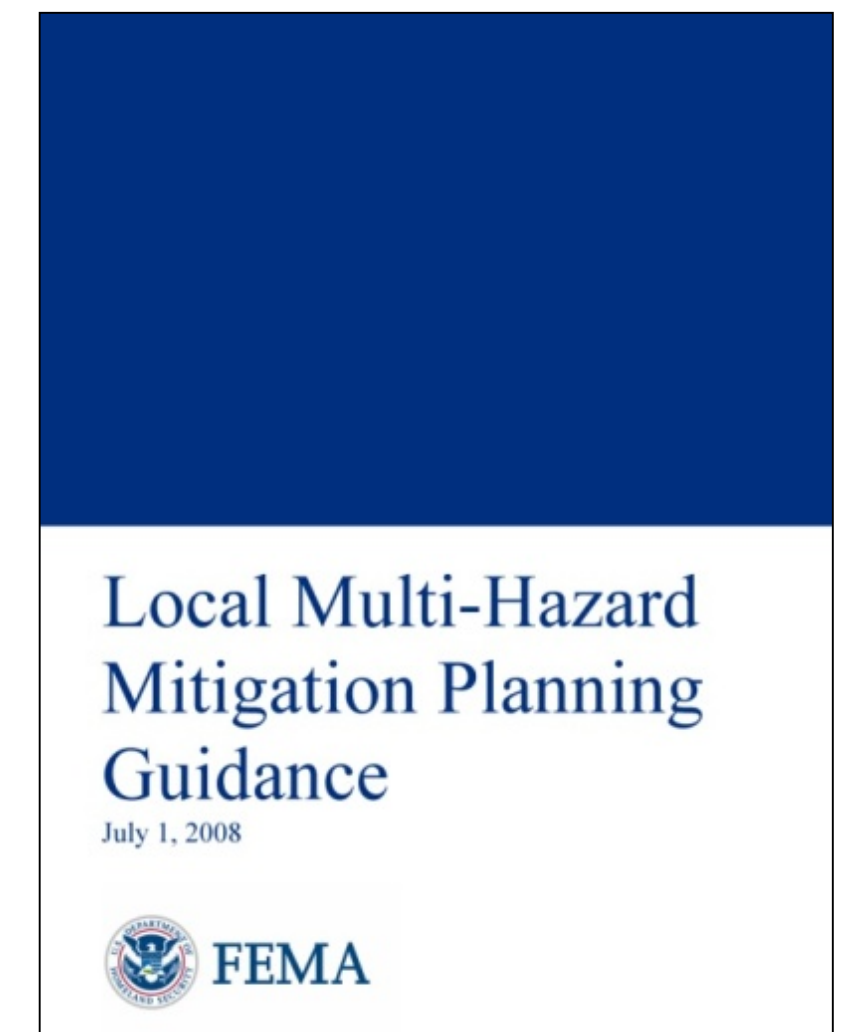
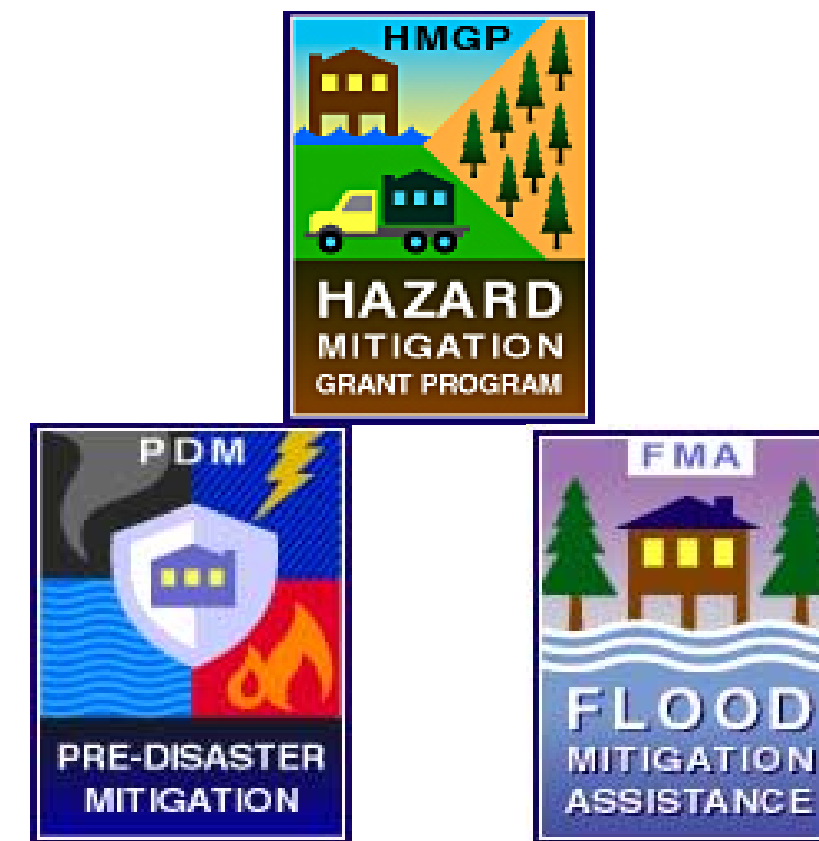
Hazard Mitigation

Any sustained action taken to reduce or eliminate the long-term risk to human life and property from hazards.



Disaster Mitigation Act of 2000

- Revitalized Federal Planning Requirements
 - State and Local Hazard Mitigation Plans
- Federal Grant Funding Eligibility
 - Hazard Mitigation Grant Program (HMGP)
 - Building Resilient Infrastructure and Communities (BRIC) Program
 - Replaced Pre Disaster Mitigation (PDM)
 - Flood Mitigation Assistance (FMA)
- DMA 2000 is intended to facilitate cooperation between state and local authorities on risk reduction measures and expedite funding allocation



History of Mitigation Planning in Buncombe County

- Initial Buncombe County Hazard Mitigation Plan – 2005
- Buncombe County Update – 2011
- NC Division of Emergency Management establishes Mitigation Planning Regions
- First Buncombe/Madison Regional Hazard Mitigation Plan – 2016
- Buncombe/Madison Regional Mitigation Plan Update – 2021 – FEMA approval pending adoption



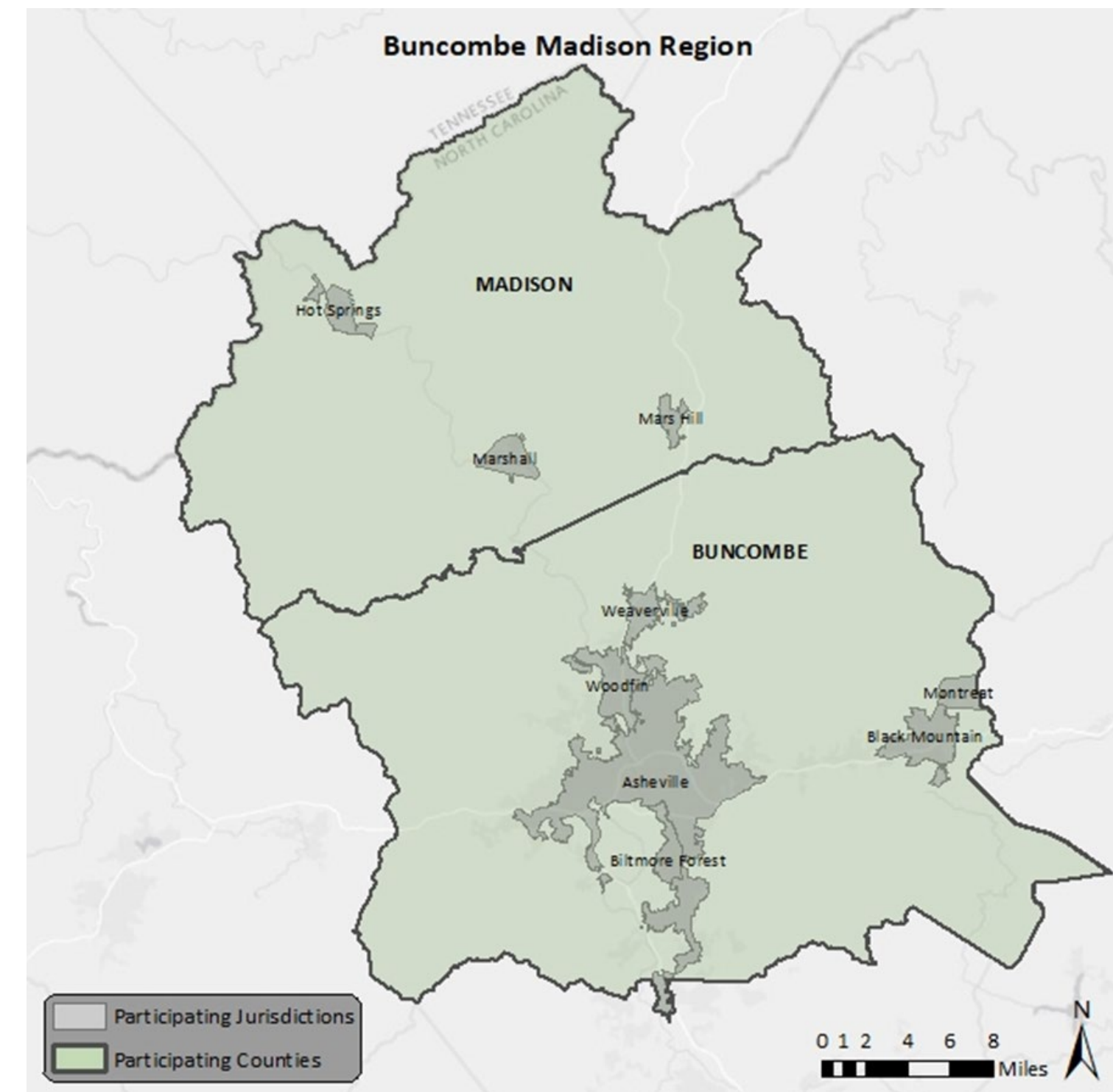
Participating Jurisdictions

Buncombe County

- Asheville
- Biltmore Forest
- Black Mountain
- Montreat
- Weaverville
- Woodfin

Madison County

- Hot Springs
- Marshall
- Mars Hill



Presidential Disaster Declarations

Since the last plan (2015)

- DR-4393 – Hurricane Florence (Madison County)
 - September 14, 2018
- DR-4487-NC – COVID-19 Pandemic
- DR-4543 – Severe Storms, Tornadoes and Flooding (Madison County)



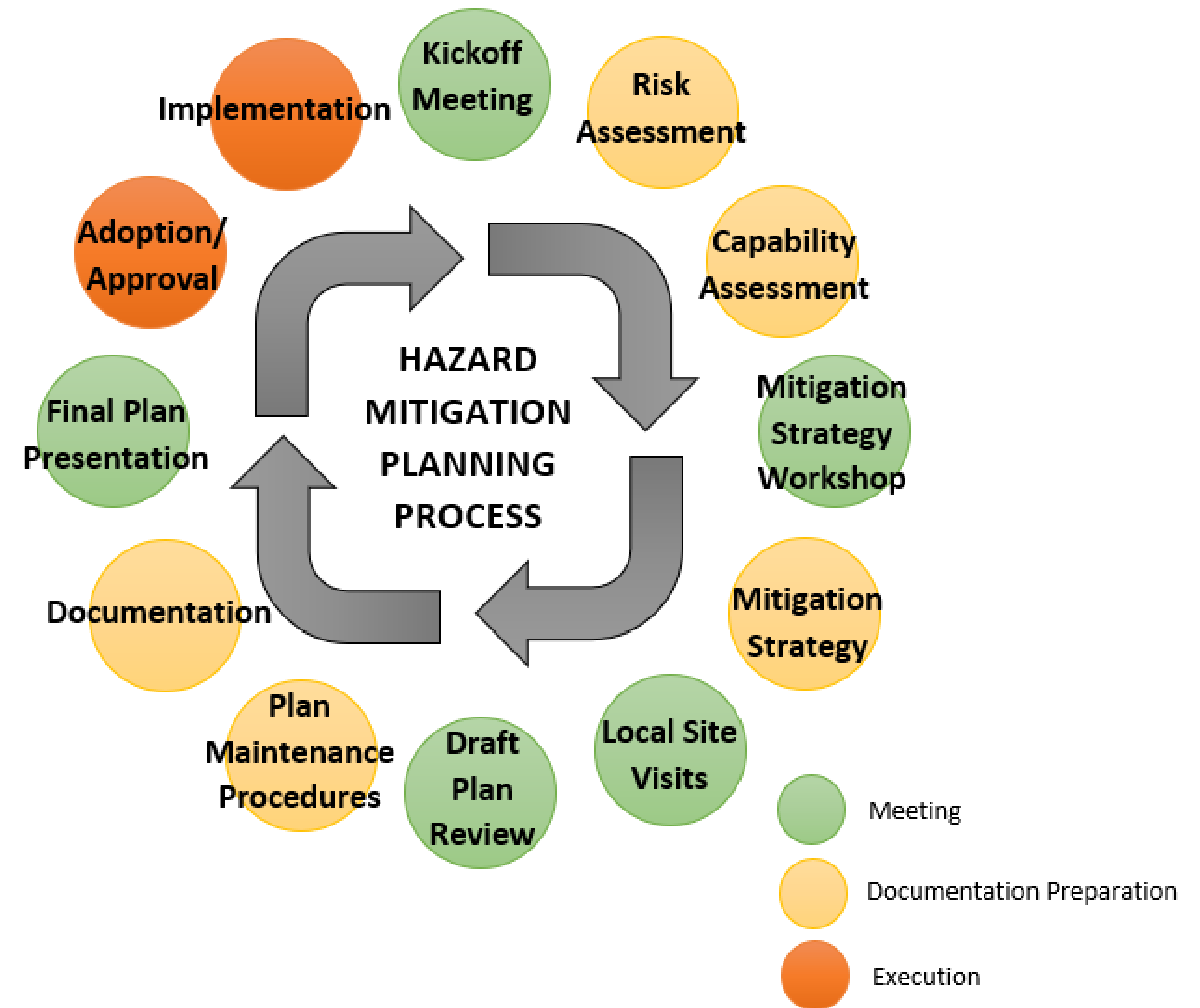
Buncombe County – Flat Creek rising during Hurricane Florence

Source: <https://www.blackmountainnews.com/story/news/2018/09/16/eastern-buncombe-county-officials-prepared-florence-approaches/1327286002/>



Project Tasks

1. Planning Process
2. Risk Assessment
3. Capability Assessment
4. Mitigation Strategy
5. Plan Maintenance
6. Documentation



Timeline for Current Update

- NC Emergency Management (NCEM) secures funding for Regional Plan Updates – 2018
- NCEM contracts with ESP Associates for the Buncombe/Madison Regional Hazard Mitigation Plan Update – August 2018
- Kickoff Meeting for Plan Update – August 2019
- Public Meeting – September 2019
- On-line Public Input Survey – September to December 2019 – 92 Responses
- Mitigation Strategy Meeting – August 2020
- Plan Submitted to NCEM for Review – September 2020
- Plan Submitted to FEMA for Review – December 2020
- FEMA Approval Pending Adoption – May 2021



Conclusions on Hazards Risk

HIGH RISK	Severe Winter Weather Tornadoes / Thunderstorms Flood Cyber Geological Hazards (Landslides)
MODERATE RISK	Drought Wildfire Hazardous Substances Hurricane /Coastal Hazards Earthquake Dam Failure Infectious Disease
LOW RISK	Terrorism EMP Radiological Emergencies



Think of mitigation in this way...

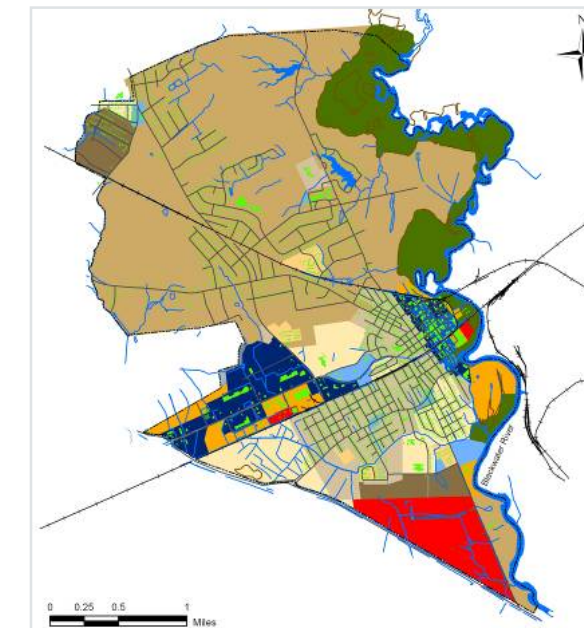
1) We want to mitigate hazard impacts on the existing development in our communities

- Houses, businesses, infrastructure, critical facilities, etc.



2) We want to ensure that future development is conducted in a way that doesn't increase our vulnerability

- Best done by having good plans, policies and procedures in place



MITIGATION TECHNIQUES

Prevention	Property Protection	Natural Resource Protection	Structural Projects	Emergency Services	Public Education/Awareness
Planning and zoning Building codes Open space preservation Floodplain regulations Stormwater management regulations Drainage system maintenance Capital improvements programming Setbacks	Acquisition Relocation Building elevation Critical facilities protection Retrofitting Safe rooms, shutters, shatter-resistant glass Insurance	Floodplain protection Watershed management Riparian buffers Forest management Erosion and sediment control Wetland preservation and restoration Habitat preservation	Reservoirs Dams, levees, dikes Floodwalls Stormwater diversions Detention/ retention basins Channel modification Storm sewers	Warning systems Emergency response equipment Shelter Operations Evacuation planning and management Emergency response training and exercises Sandbagging for flood protection Temporary shutters	Outreach projects Speaker series/ demonstration events Hazard map information Real estate disclosure Library materials School children educational programs Hazard expositions



Buncombe County Mitigation Actions

- Incorporate hazard mitigation into the planning process of each jurisdiction.
- Continue to carry out the hazard mitigation planning process and seek funding for emerging needs.
- Evaluate participation in the National Flood Insurance Program Community Rating System (CRS)
- Adopt new standards to limit the loss of life and damage to property in flood prone areas. Primary tenet of CRS – higher standards



Buncombe County Mitigation Actions

- Further evaluate Buncombe County's regulations that guide development on steep slopes especially in areas with known colluvial soil deposits.
- Evaluate road construction standards for large scale commercial developments and residential subdivisions in coordination with Emergency Management and the Fire Marshal's Office.
- Create and implement hazard mitigation recommendations through the new Comprehensive Planning process.



Buncombe County Mitigation Actions

- Continue to evaluate and adjust our development ordinances specifically those related to flood, erosion control and stormwater to further protect against and mitigate the impacts of hazards from severe weather events.
- Ensure consistent enforcement of ordinances through regular evaluation, audit and long range planning initiatives.
- Continue to implement NextGen e-911 addressing requirements. Assure that our Fire Departments are utilizing addressing data from the CAD/GIS database. Do not rely on Google, MapQuest, etc.
- Educate the public regarding hazard mitigation x1000 to the Nth degree.



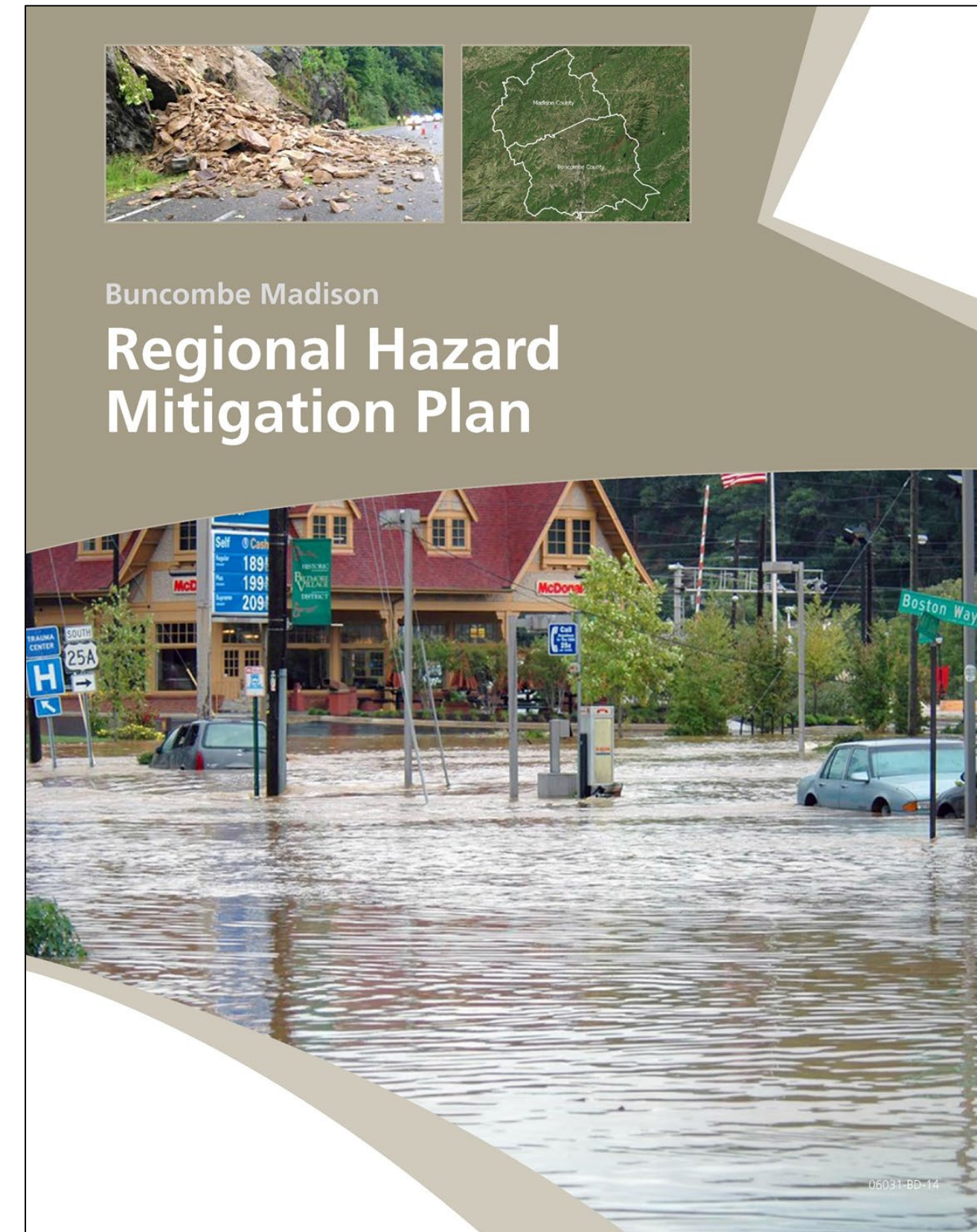
Mitigation action plan

Action #	Description	Hazard Addressed	Priority	Lead Agency/ Department	Potential Funding Sources	Implementation Schedule	Status
PP-1	Strengthen the road design and construction as it pertains to the Manufactured Home Park Ordinance.	All	Moderate	County FM / Planning Department	Local	Completed	County Fire Marshals approve based on Emergency Vehicle Access according to street construction standards specified in the ordinance.



Next steps

- Plans will be presented to local governing body Councils and Boards between now and Plan Expiration
- Current plan expires **July 6, 2021**



Questions?

