



Metropolitan Sewerage District

Update for Buncombe County Board of Commissioners
February 16, 2021



BUNCOMBE COUNTY





MSD HISTORY

- MSD was formed in 1962 by State Statute as a Special District with the sole purpose to collect and treat wastewater and to eliminate the direct discharges to the surrounding rivers and streams.
- Between 1962 and 1989 MSD built over 100 miles of large interceptor lines and a 25 MGD treatment plant. The Treatment Plant was later upgraded to a 40 MGD Plant in the mid 1990's.
- In 1990 all the local governments and special districts gave all of their collection lines (720 miles) to MSD for ownership and maintenance in agreements we call "Sewer Consolidation."





Consolidation of Fifteen Separate Sewer Systems in 1990

Five Municipalities

- City of Asheville
- Town of Biltmore Forest
- Town of Black Mountain
- Town of Montreat
- Town Of Weaverville



Over 170,000 people

Ten Special Districts

- Beaverdam Water and Sewer District
- Busbee Sanitary Sewer District
- Caney Valley Sanitary Sewer District
- Crescent Hill Sanitary Sewer District
- Enka-Candler Water and Sewer District
- Fairview Sanitary Sewer District
- Venable Sanitary District
- Skyland Sanitary Sewer District
- Swannanoa Water and Sewer District
- Woodfin Sanitary Water and Sewer District



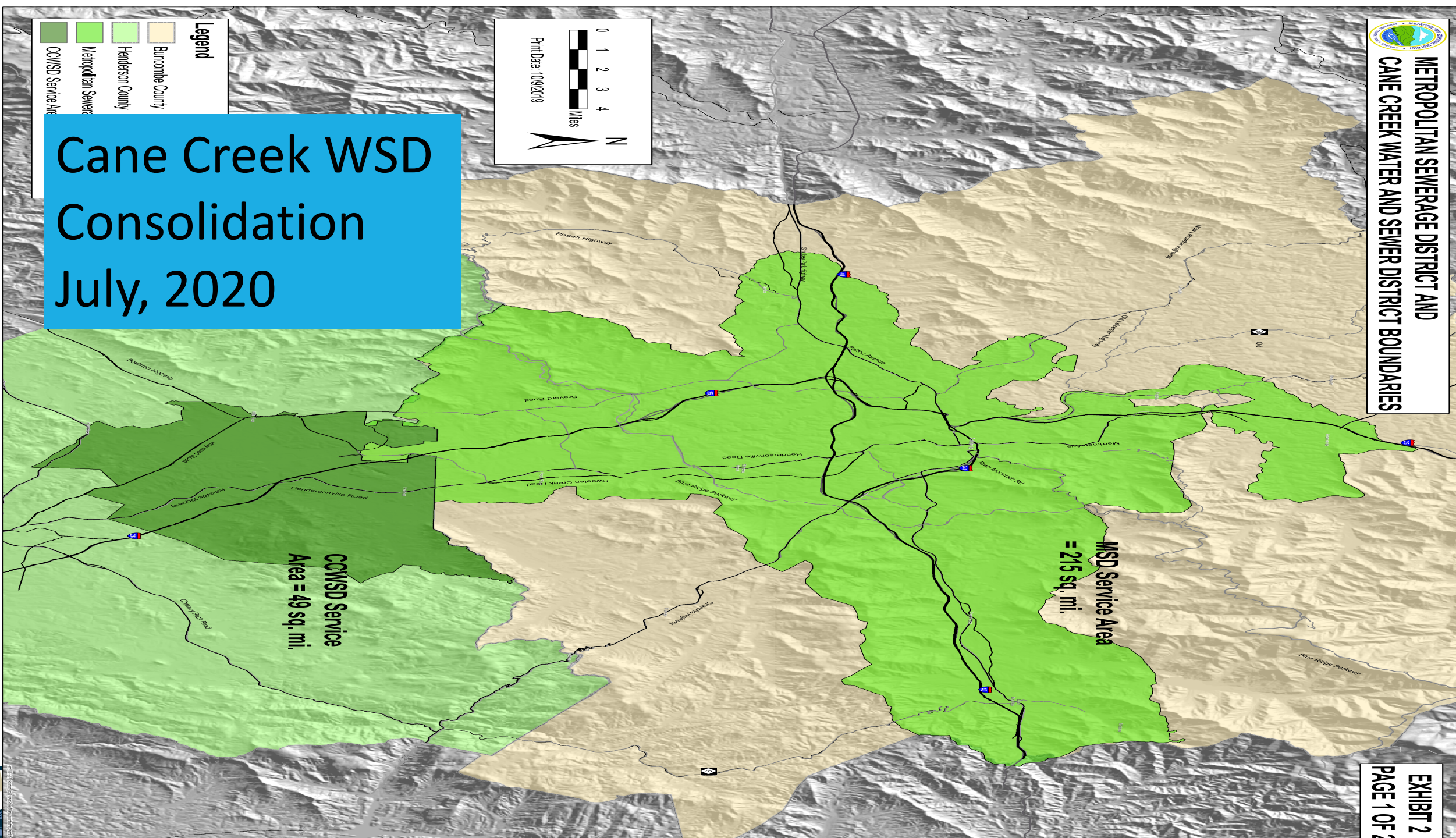


**METROPOLITAN SEWERAGE DISTRICT AND
CANE CREEK WATER AND SEWER DISTRICT BOUNDARIES**



- Legend**
- Buncombe County
 - Henderson County
 - Metropolitan Sewerage District
 - CCWSD Service Area

Cane Creek WSD Consolidation July, 2020





Current MSD Board of Directors

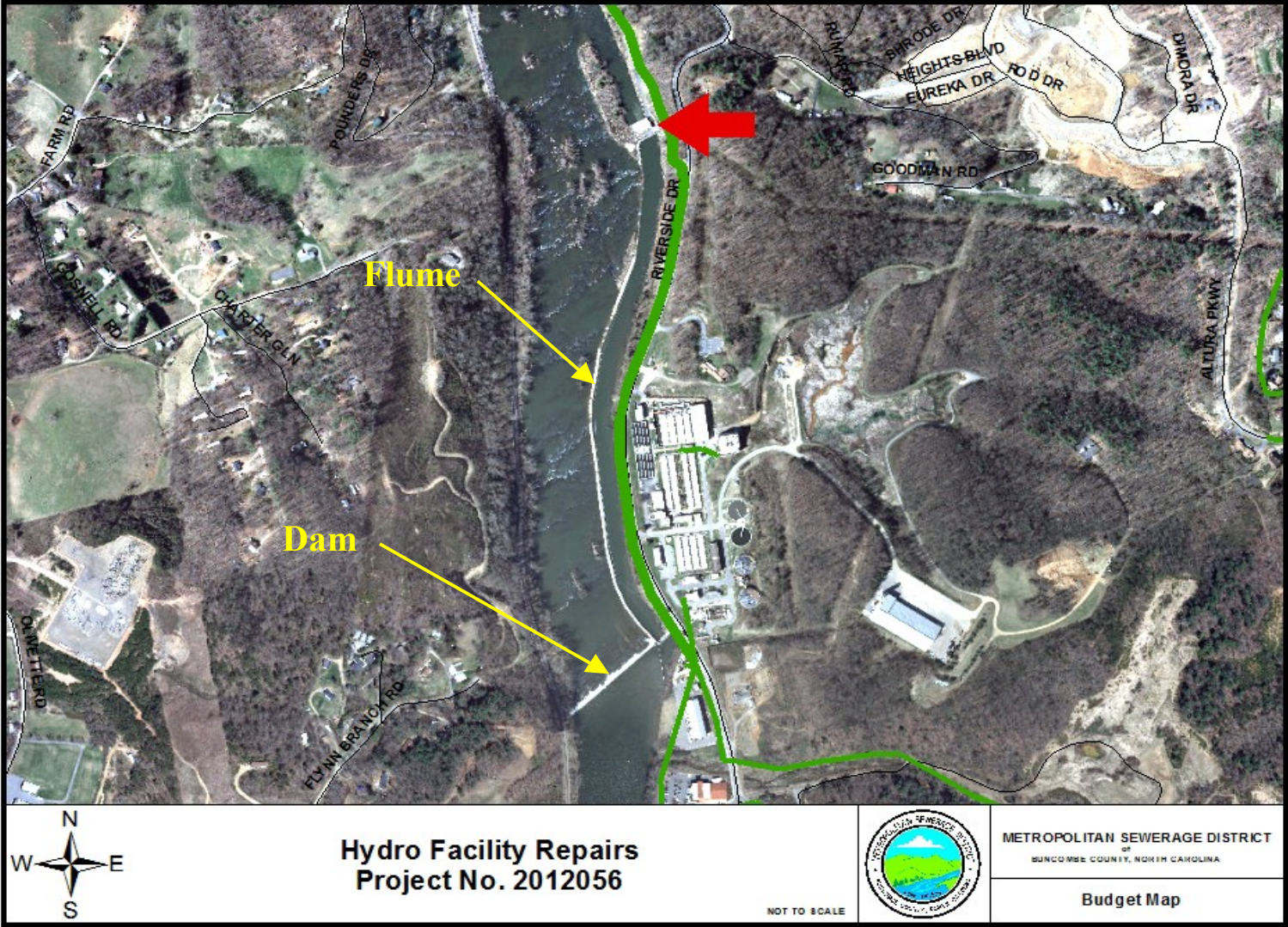
Matt Ashley, Jr.	Montreat
Jackie W. Bryson	Woodfin SWSD
Sheila Franklin	Henderson County
Glenn Kelly	Biltmore Forest
William Lapsley	Henderson County
Esther Manheimer	Asheville
Chris Pelly	Asheville

Nathan Pennington	Buncombe County
Robert Pressley	Buncombe County
Earl Valois	Weaverville
Jerry Vehaun	Woodfin
Robert Watts	Black Mountain
Gwen Wisler	Asheville
Al Whitesides	Buncombe County





BUNCOMBE COUNTY





Current Hydroelectric Production

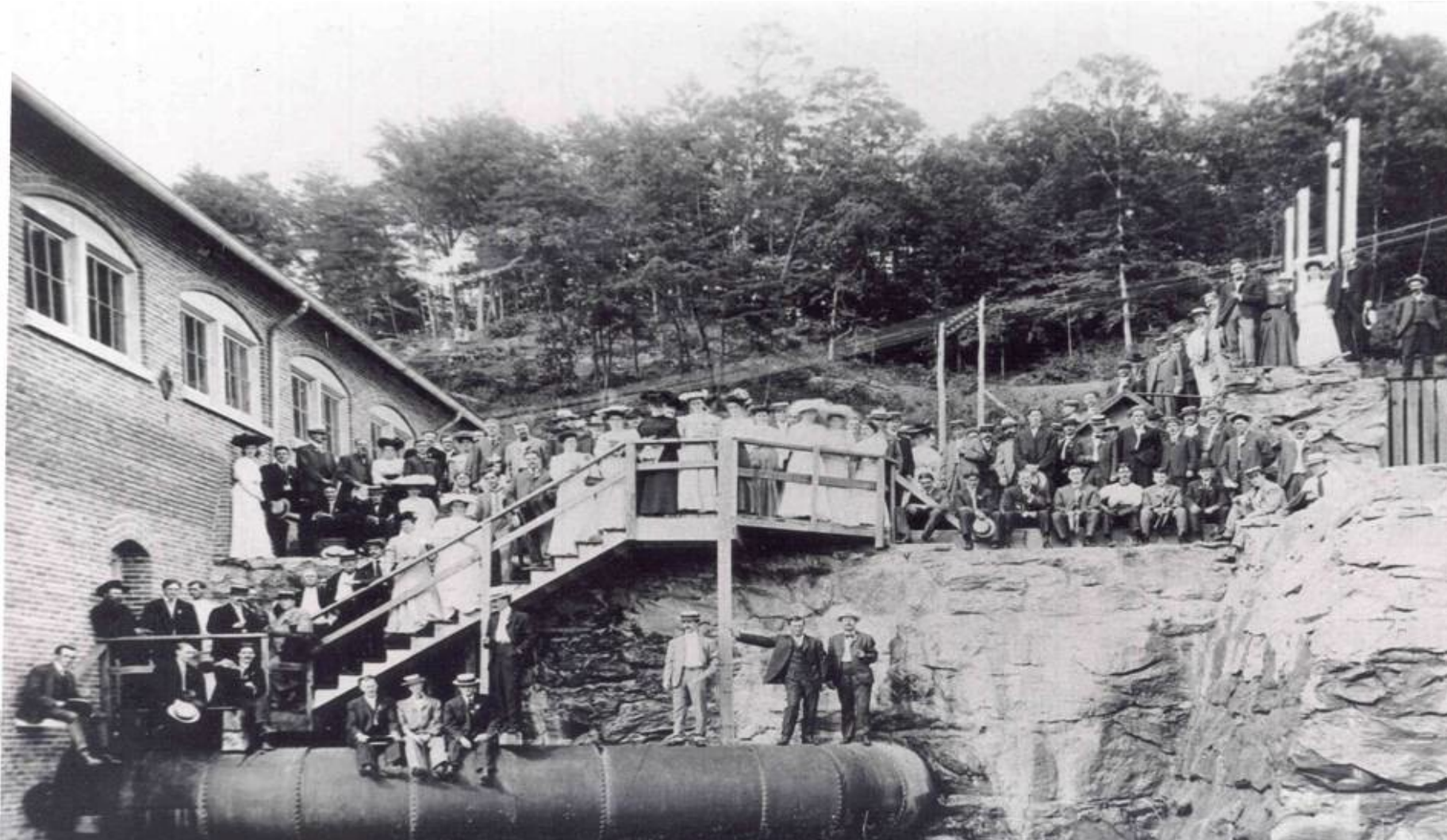


- Can Generate 2880 KW
- FY 2015 Avoided Power Cost \$435,000





Hydroelectric Generation Facility



1986 Reconstructed Craggy Dam Hydro Plant (Originally Built 1903)



BUNCOMBE COUNTY



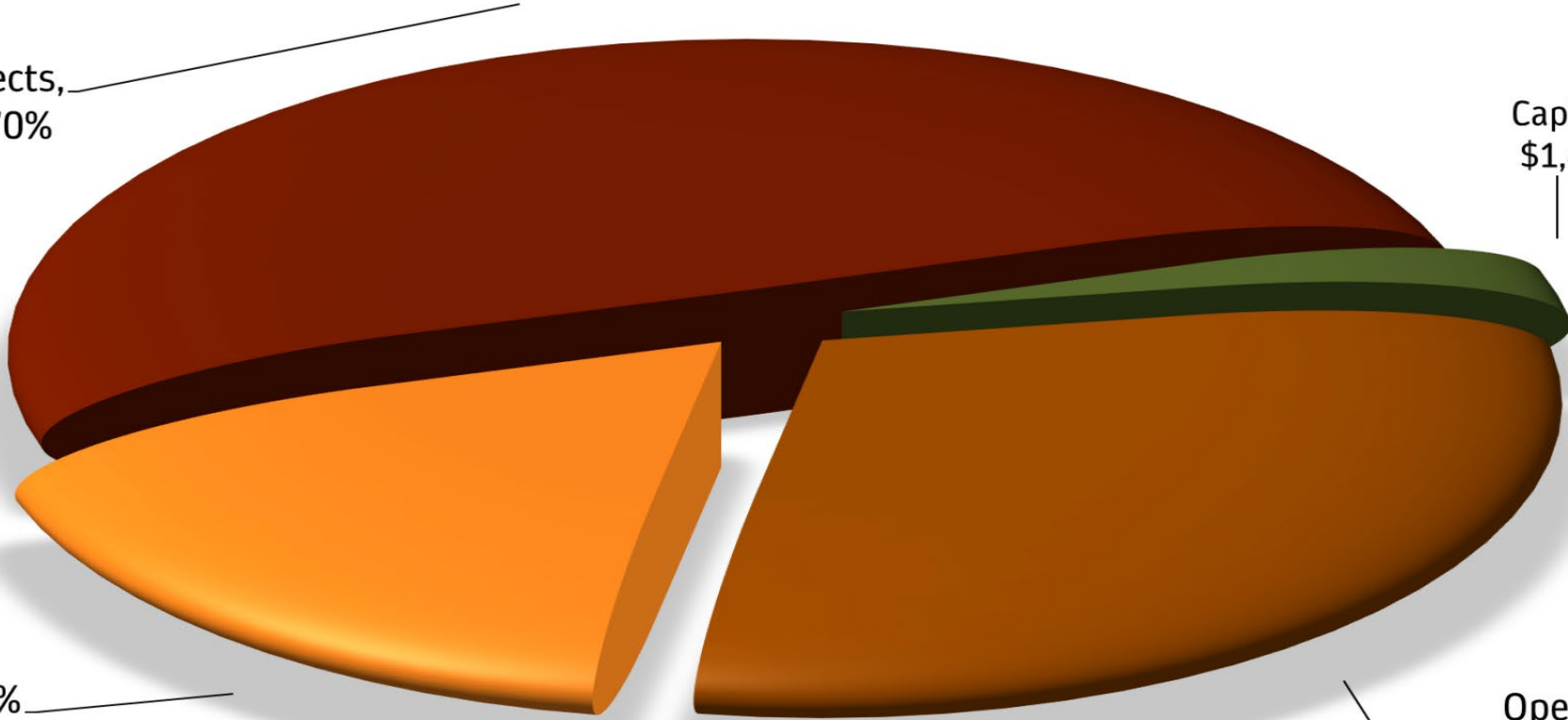
FY21 Budget Expenditures \$56,600,826

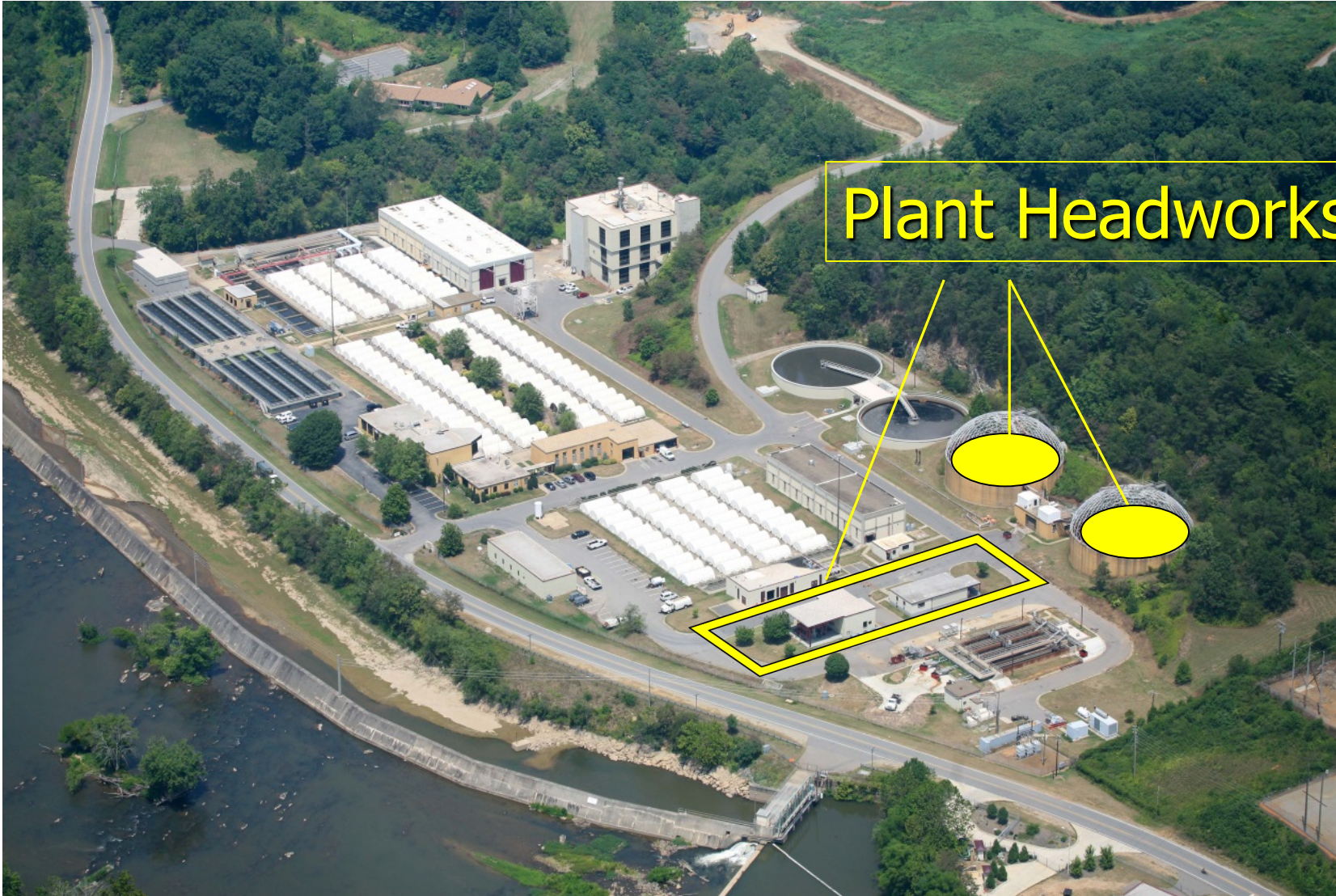
Construction Projects,
\$28,131,316, 49.70%

Capital Equipment,
\$1,406,987, 2.49%

Debt Service,
\$9,837,382, 17.38%

Operations &
Maintenance,
\$17,225,141, 30.43%





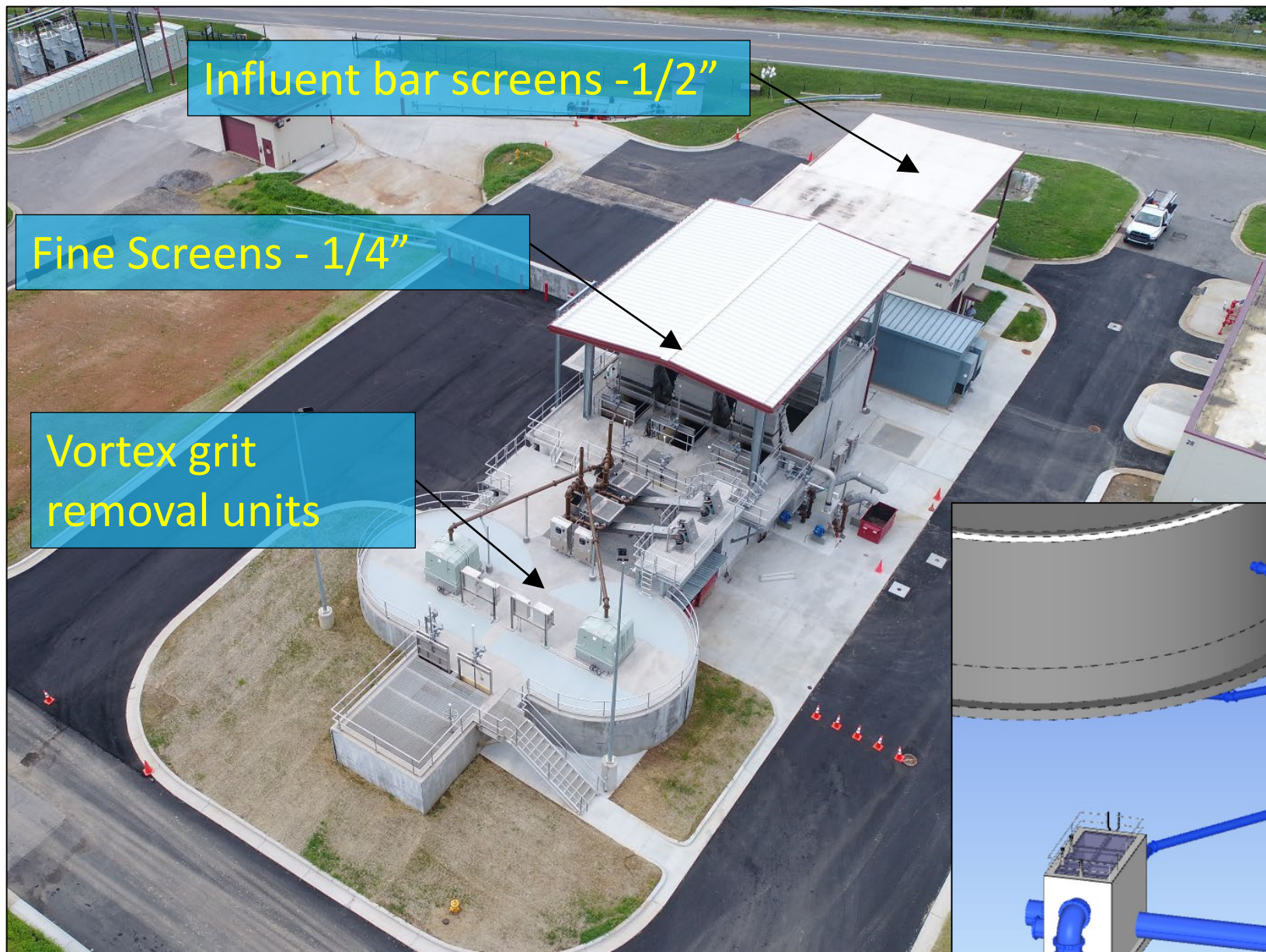
Plant Headworks Project

- New Bar Screens
- Improved Fine Screens
- Grit Removal
- Surge System for Peak Flows
- Construction complete
- Total Project cost approx. \$9.6 Million

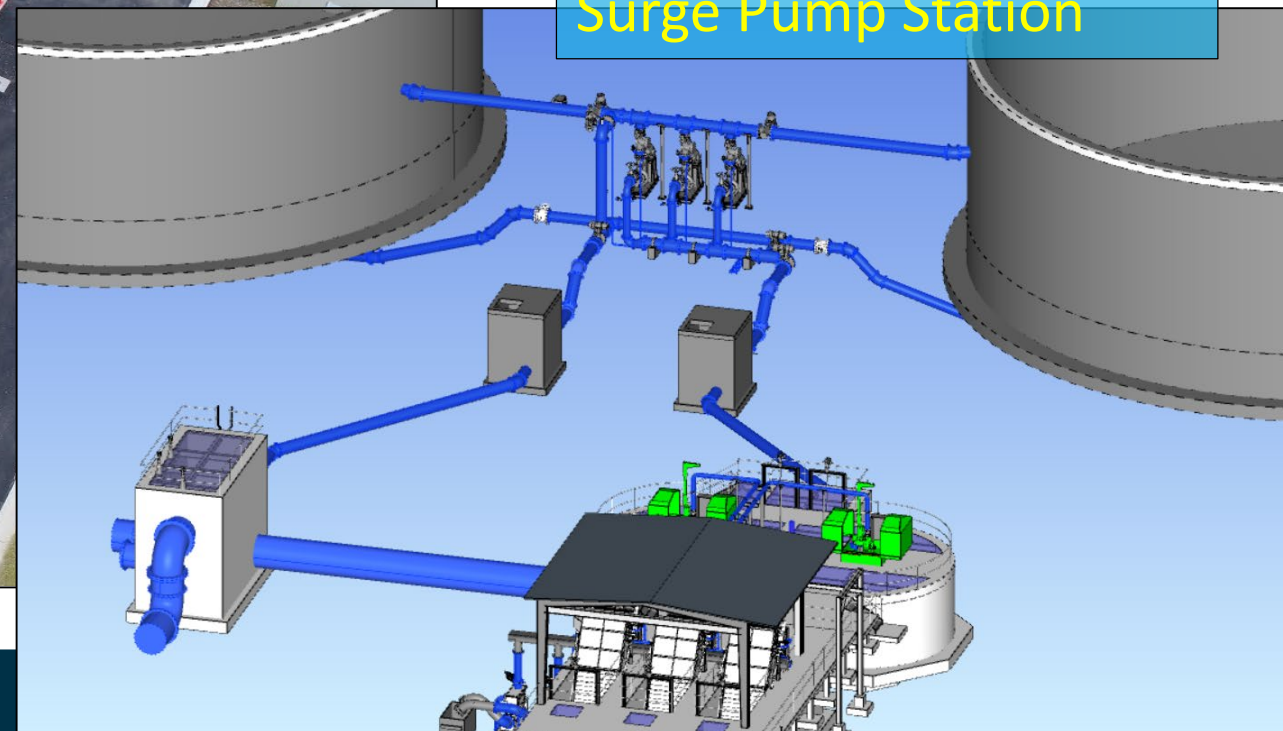


BUNCOMBE COUNTY





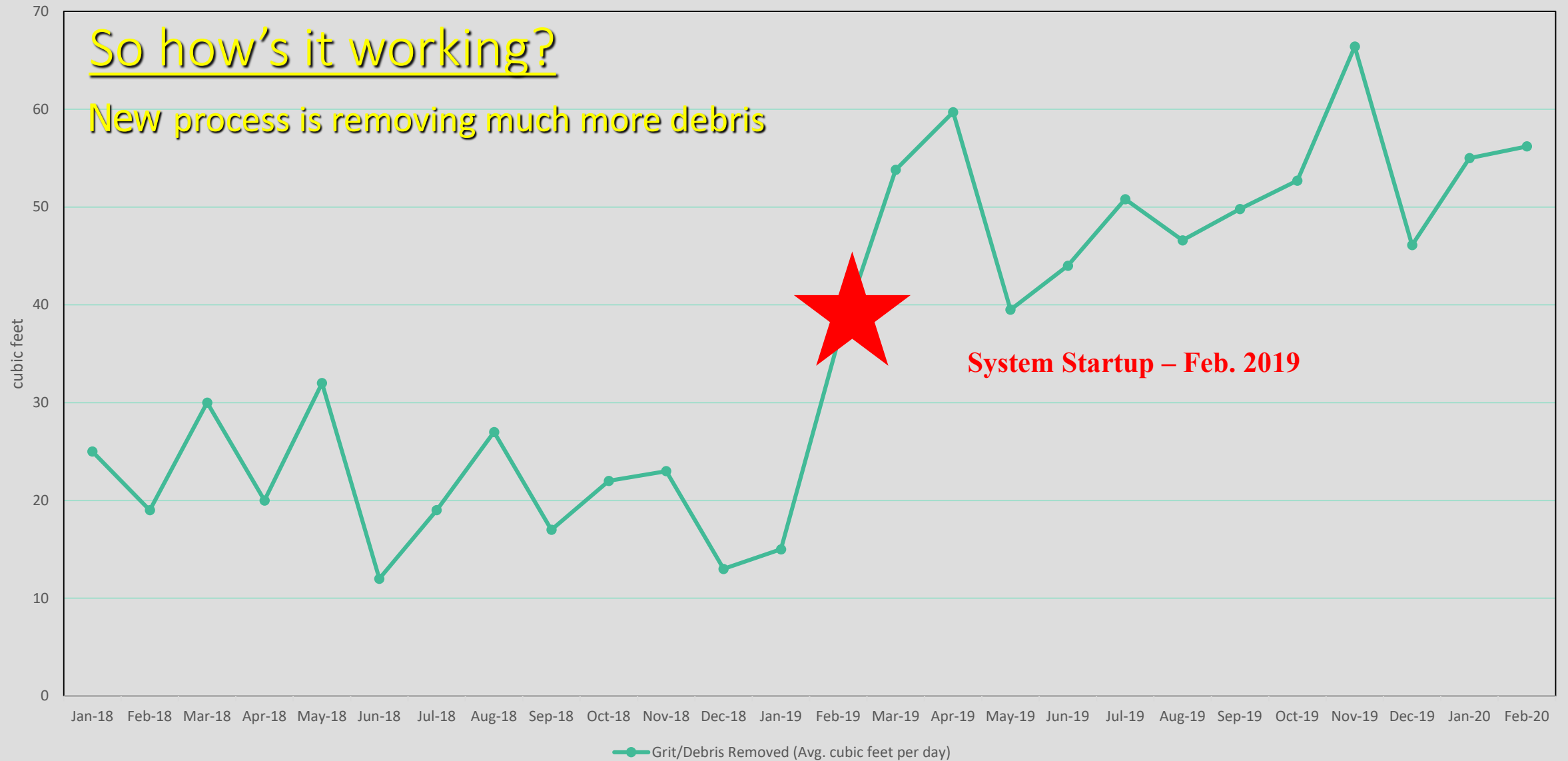
Surge Pump Station



Headworks Grit/Debris Removal per day

So how's it working?

New process is removing much more debris





High Rate Primary Clarification

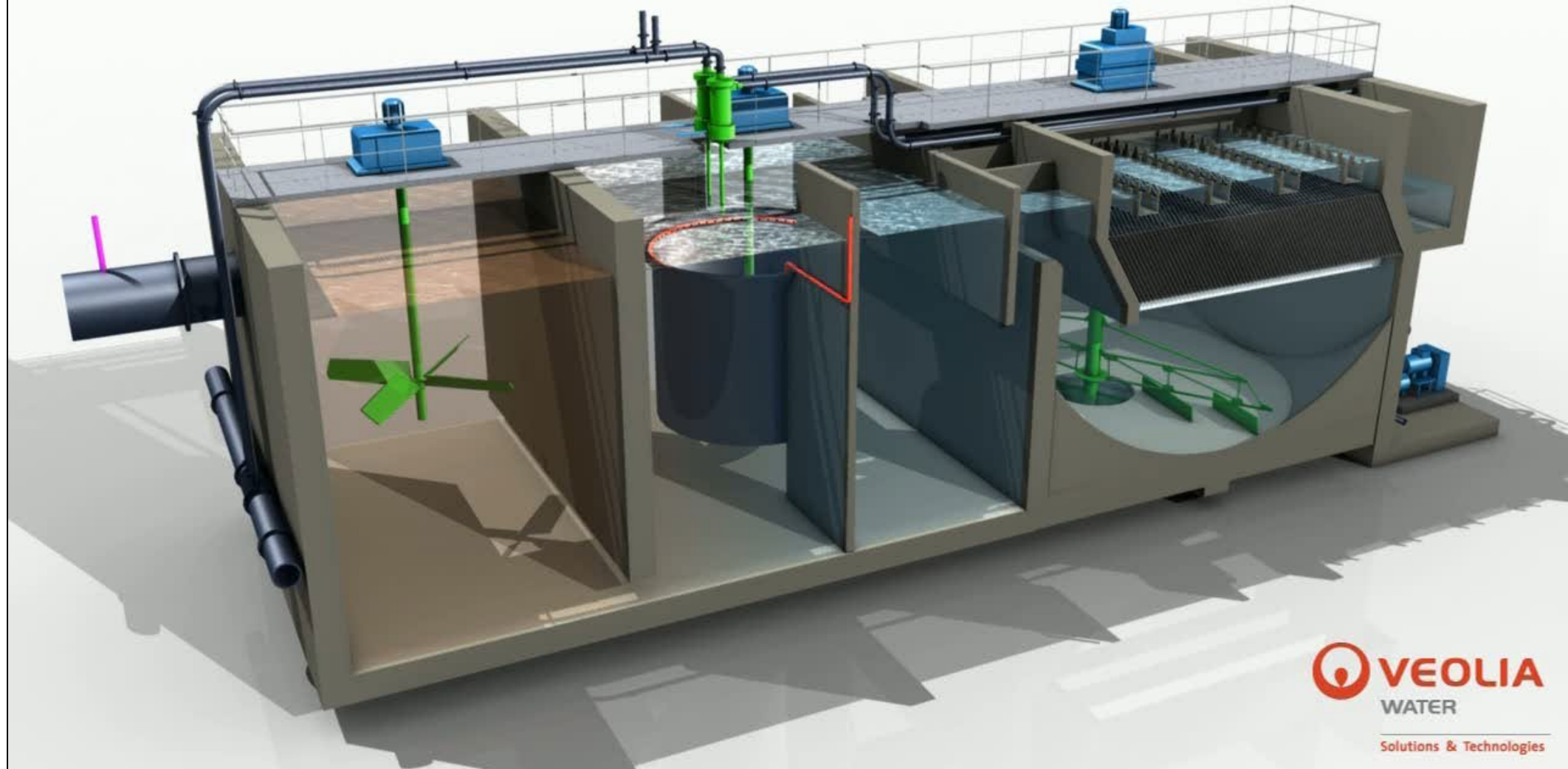
- New technology
- Will significantly improve treatment
- Under Construction
- Total Project Cost \$17 Million



BUNCOMBE COUNTY



Ballasted Flocculation Process



VEOLIA
WATER
Solutions & Technologies



BUNCOMBE COUNTY



Spring of 2020



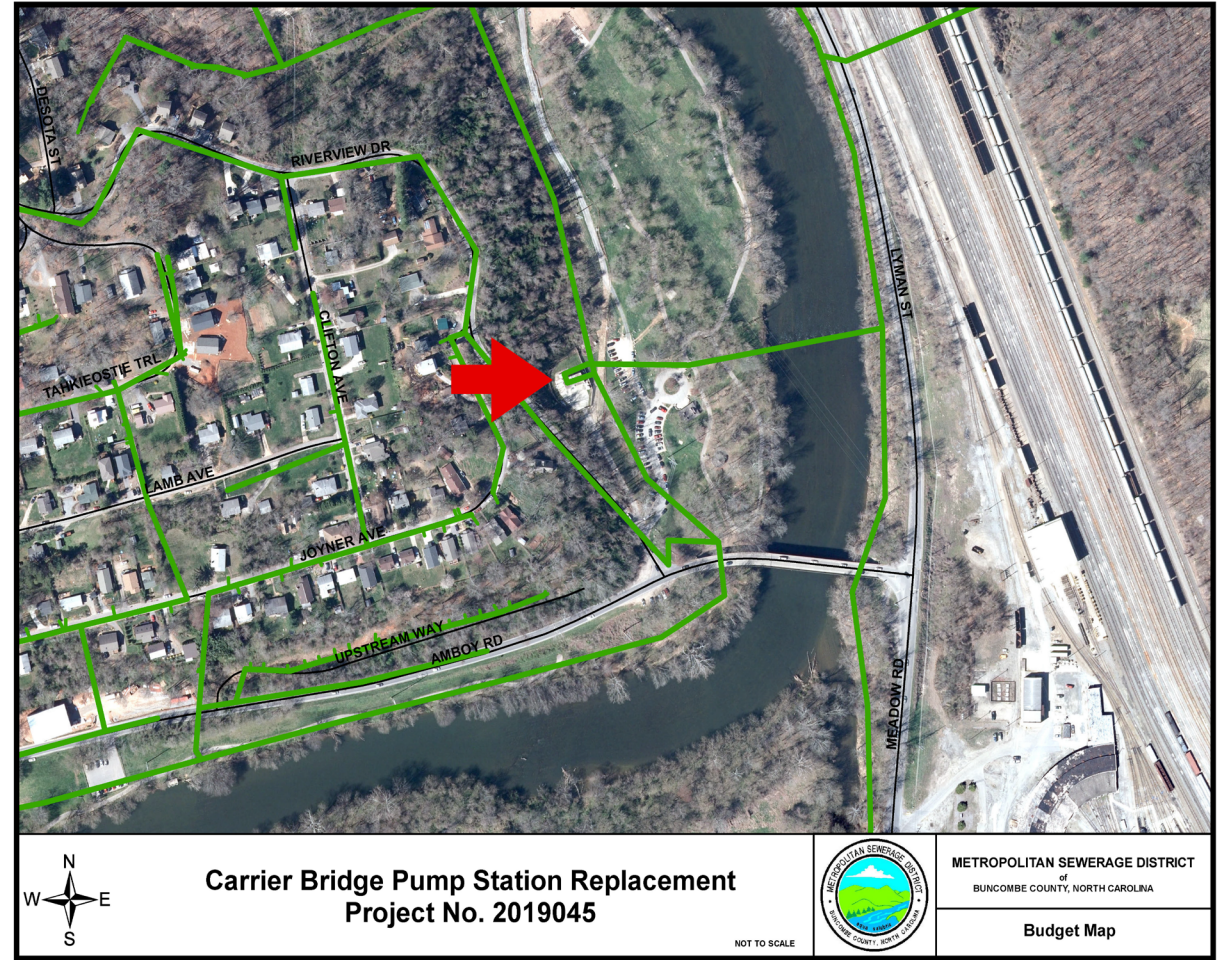
BUNCOMBE COUNTY



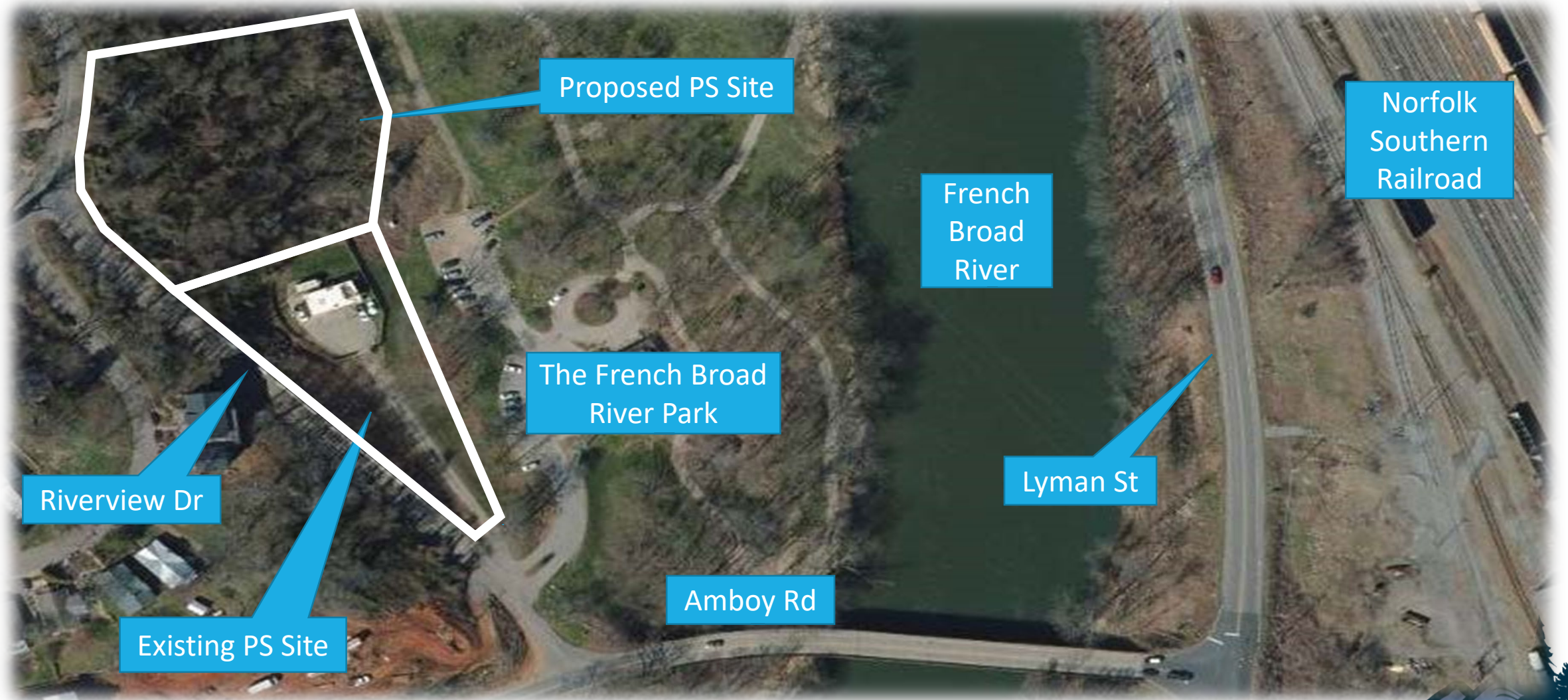
Fall of 2020

Carrier Bridge Pump Station

- Serves large areas of Asheville, Southern and Western Buncombe County, and CCWSD.
- Original station constructed in 1960's and upgraded multiple times.
- Capacity increased utilizing 50-year growth projections, to 34 mgd.
- \$30 M Construction Cost
- Design underway, construction to begin in FY21-22.



Carrier Bridge Pump Station



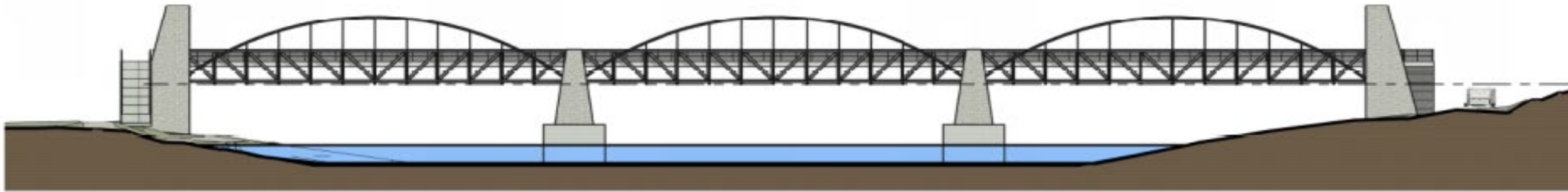


New station will be 70-75 feet deep

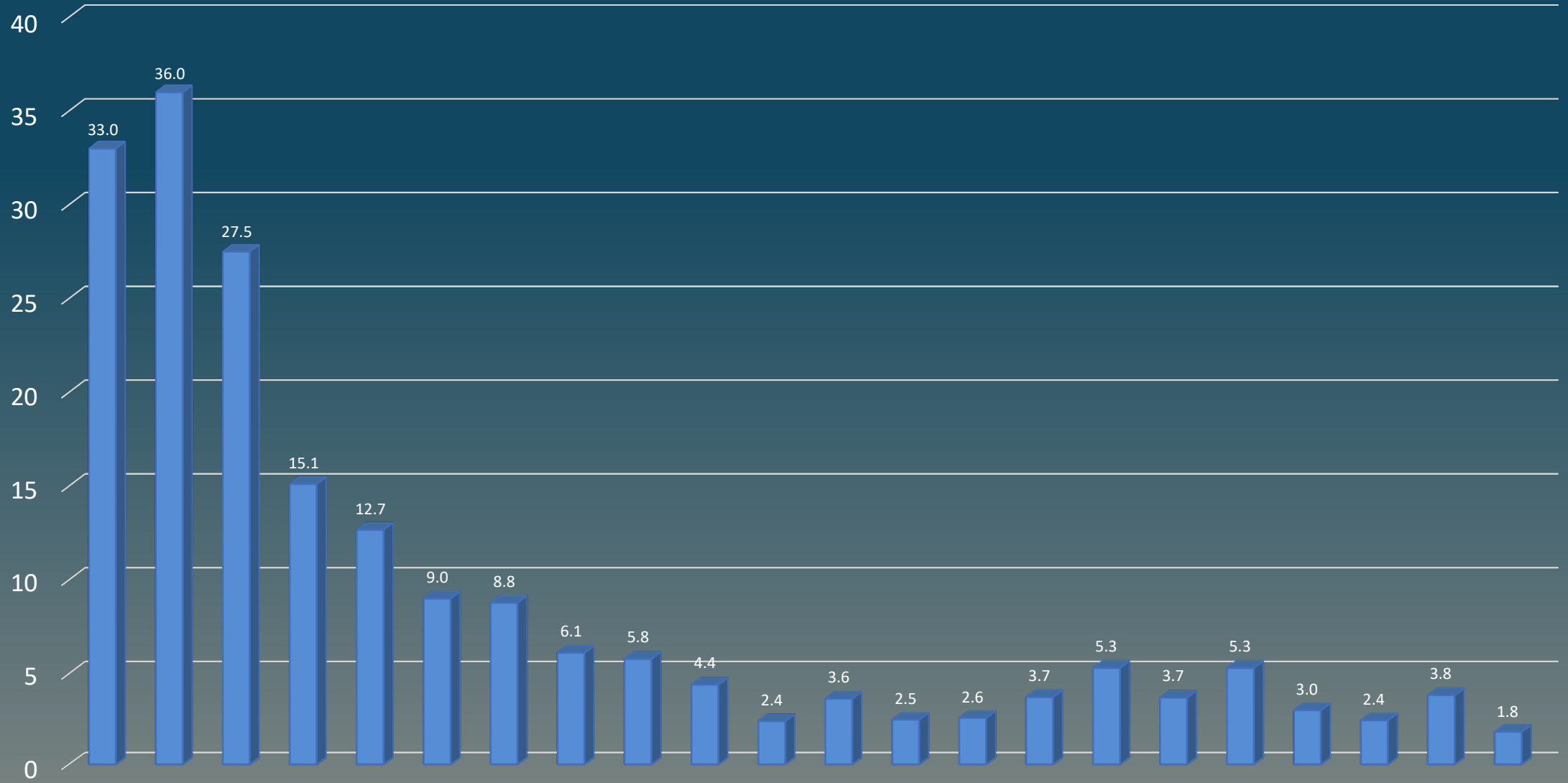




Sewer crossing/Pedestrian Bridge for Wilma Dykeman Greenway – COA Partnership



SSO's/100 Miles of Sewer per year



Our End Product



Questions ?



BUNCOMBE COUNTY

