



COVID-19 Update

Presented by

Stacie Turpin Saunders
Health Director

November 5, 2020



Buncombe County Lab-Confirmed Cases

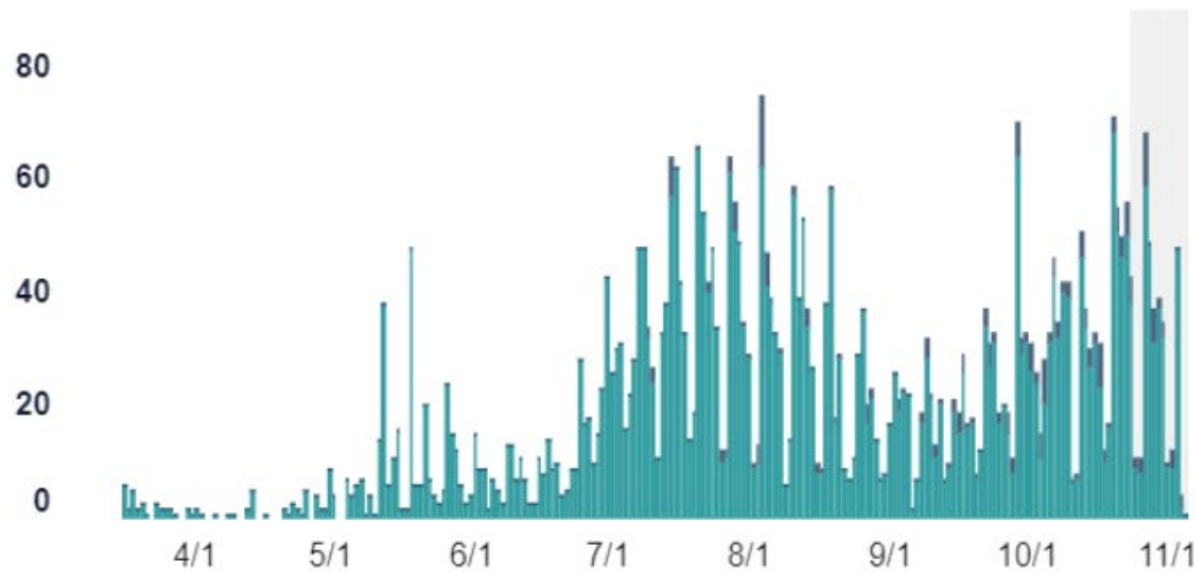
Daily Cases



Top Graph - Select By:

- CASES by Date Reported
- CASES by Date of Specimen Collection
- DEATHS by Date of Death

Is Buncombe County seeing a downward trajectory over 14 days, or sustained leveling in new cases?



TOTAL CASES

4,443

MOLECULAR (PCR) POSITIVE CASES

4,206

ANTIGEN POSITIVE CASES

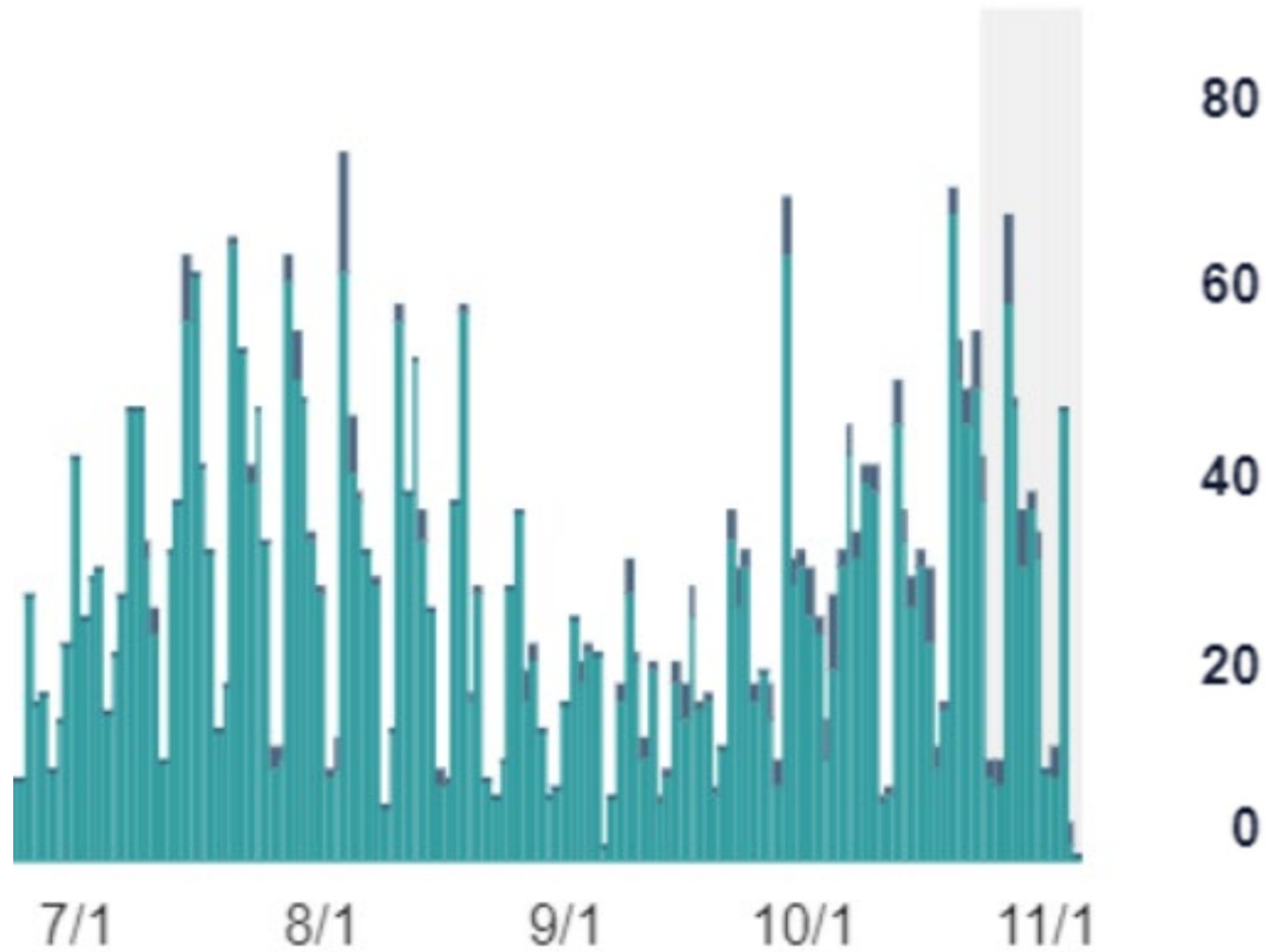
237

Specimen collection date
missing for 8 cases.

Source: NC DHHS COVID-19 Dashboard; 11/5/2020



Buncombe County Lab-Confirmed Cases



Source: NC DHHS COVID-19 Dashboard; 11/5/2020

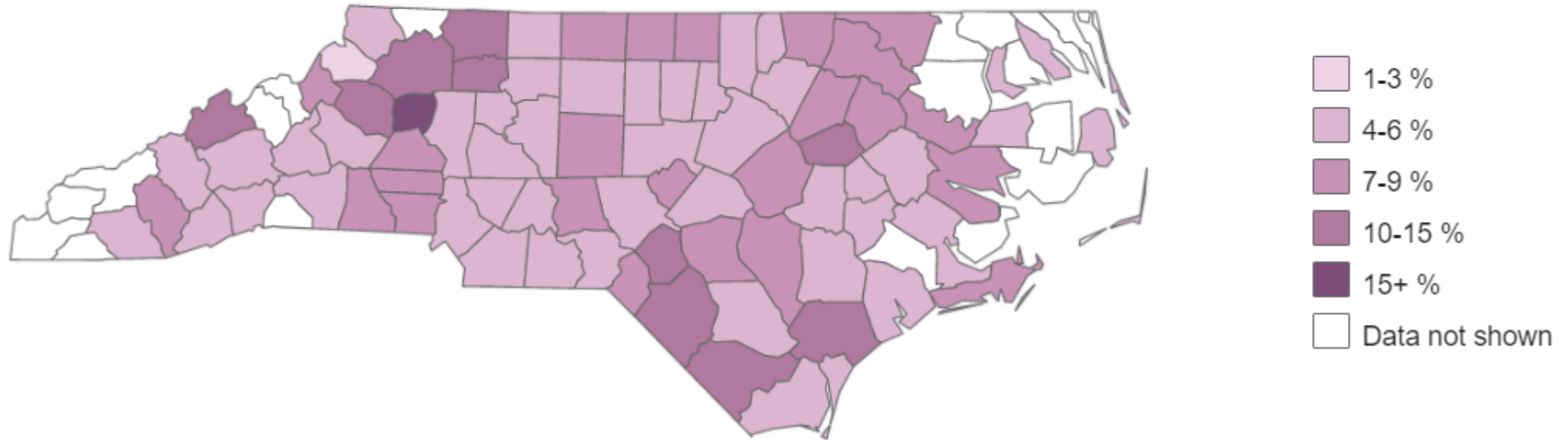


Percent Positive by County



Which counties are seeing a decline or sustained level of percent of tests that are positive?

It is important to recognize that the amount of testing being conducted varies across counties. Because the percent positive is calculated using only molecular (PCR) testing data reported electronically in to NC COVID, which is a subset of total tests reported, county-level percent positive rates may be impacted by how many of the total tests for residents in the county were reported electronically through NC COVID.

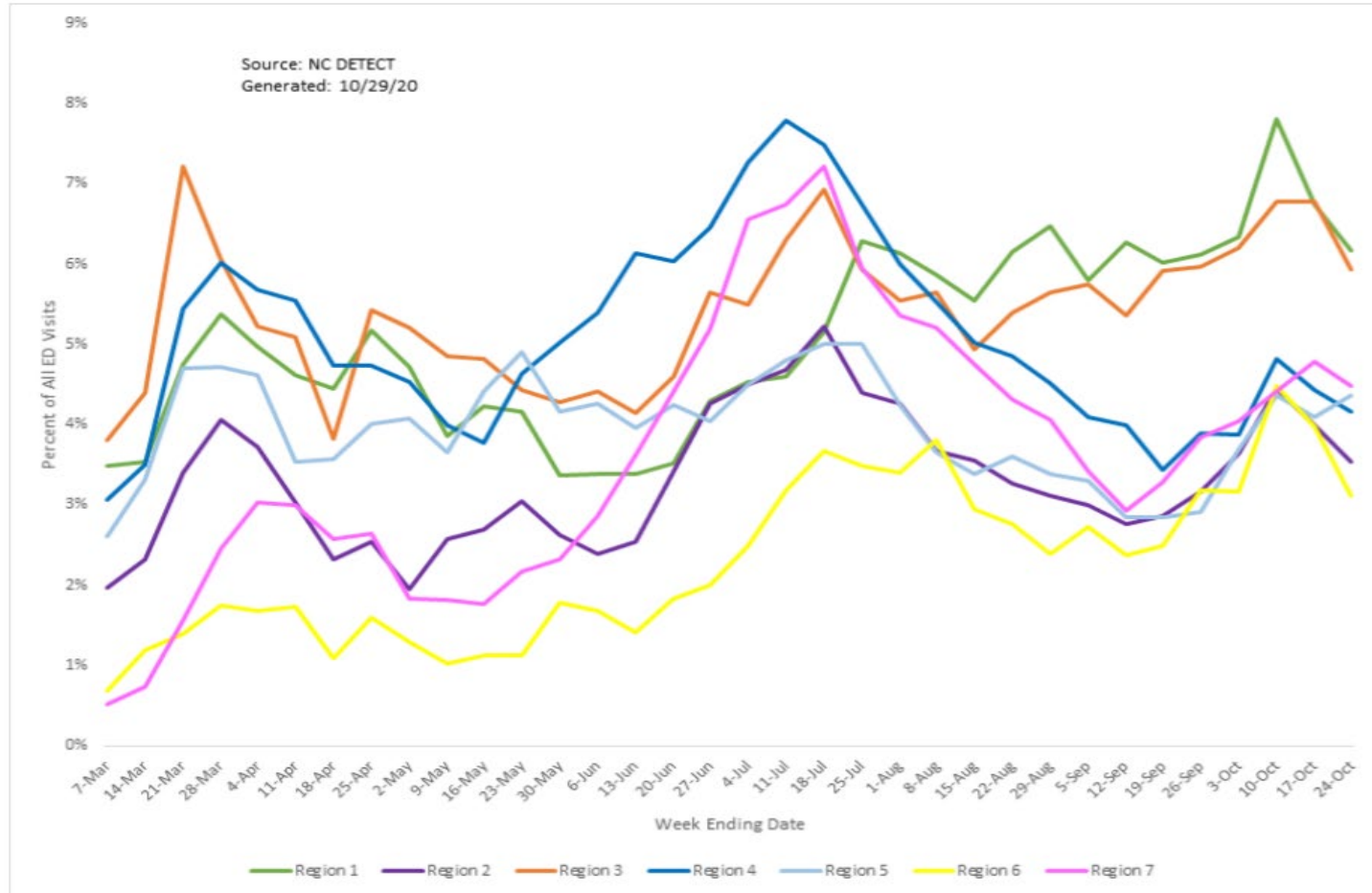


Source: NCDHHS COVID-19 dashboard; 11/5/2020



NC Emergency Dept. Visits for COVID-like Illness

How does the percentage of ED visits for COVID-like illness compare between regions of the state?



WNC is Region 6
in Yellow



Applying Metrics to Buncombe County

Metric	Value	Dark Green	Light Green	Yellow	Orange	Red
New cases per 100,000 population per week	101	≤ 4	5 - 9	5 - 9	51 - 100	≥ 101
Percent change in new cases per 100,000 population	-9.0%	≤ -26.0%	-25.9% - -11.0%	-10.9% - 0.0%	0.1% - 10.0%	≥ 10.1%
Diagnostic test result positivity rate	4.0%	≤ 2.9%	3.0% - 4.9%	5.0% - 7.9%	8.0% - 10.0%	≥ 10.1%
Change in test positivity	-0.3%	≤ -2.1%	-2.0% - -0.6%	-0.5% - 0.0%	0.1% - 0.5%	≥ .6%
Total diagnostic tests resulted per 100,000 population per week	2095	≥ 2001	1001 - 2000	750 - 1000	500 - 749	≤ 499
COVID-19 Deaths						
COVID-19 deaths per 100,000 population per week	1.9	≤ 0.1	0.2 - 0.4	0.5 - 1	1.1 - 2	≥ 2.1
Percent change in deaths per 100,000 population	35.7%	≤ -26.0%	-25.9% - -11.0%	-10.9% - 0.0%	0.1% - 10.0%	≥ 10.1%
COVID-19 Hospitalization						
Percent inpatient hospital beds occupied with COVID-19	4.1%	≤ 5.0%	5.0% - 10.0%	10.0% - 15.0%	15.0% - 15.0%	≥ 15.0%
Percent ICU beds occupied with COVID-19	8.0%	≤ 75.0%	75.1% - 80.0%	80.1% - 85.0%	85.1% - 90.0%	≥ 90.1%



If 5 or more metrics in ORANGE or RED,
recommendations will be brought to BoC

Applying Metrics to Buncombe County

Metric	Value	Dark Green	Light Green	Yellow	Orange	Red
New cases per 100,000 population per week	101	≤ 4	5 - 9	5 - 9	51 - 100	≥ 101
Percent change in new cases per 100,000 population	-9.0%	≤ -26.0%	-25.9% - -11.0%	-10.9% - 0.0%	0.1% - 10.0%	≥ 10.1%
Diagnostic test result positivity rate	4.0%	≤ 2.9%	3.0% - 4.9%	5.0% - 7.9%	8.0% - 10.0%	≥ 10.1%
Change in test positivity	-0.3%	≤ -2.1%	-2.0% - -0.6%	-0.5% - 0.0%	0.1% - 0.5%	≥ .6%
Total diagnostic tests resulted per 100,000 population per week	2095	≥ 2001	1001 - 2000	750 - 1000	500 - 749	≤ 499
COVID-19 deaths per 100,000 population per week	1.9	≤ 0.1	0.2 - 0.4	0.5 - 1	1.1 - 2	≥ 2.1
Percent change in deaths per 100,000 population	35.7%	≤ -26.0%	-25.9% - -11.0%	-10.9% - 0.0%	0.1% - 10.0%	≥ 10.1%
Percent inpatient hospital beds occupied with COVID-19	4.1%	≤ 5.0%	5.0% - 10.0%	10.0% - 15.0%	15.0% - 15.0%	≥ 15.0%
Percent ICU beds occupied with COVID-19	8.0%	≤ 75.0%	75.1% - 80.0%	80.1% - 85.0%	85.1% - 90.0%	≥ 90.1%



If 3 or more metrics in Section 1 ORANGE or RED, recommendations will be brought to BoC

Applying Metrics to Buncombe County

Metric	Value	Dark Green	Light Green	Yellow	Orange	Red
New cases per 100,000 population per week	101	≤ 4	5 - 9	5 - 9	51 - 100	≥ 101
Percent change in new cases per 100,000 population	-9.0%	≤ -26.0%	-25.9% - -11.0%	-10.9% - 0.0%	0.1% - 10.0%	≥ 10.1%
Diagnostic test result positivity rate	4.0%	≤ 2.9%	3.0% - 4.9%	5.0% - 7.9%	8.0% - 10.0%	≥ 10.1%
Change in test positivity	-0.3%	≤ -2.1%	-2.0% - -0.6%	-0.5% - 0.0%	0.1% - 0.5%	≥ .6%
Total diagnostic tests resulted per 100,000 population per week	2095	≥ 2001	1001 - 2000	750 - 1000	500 - 749	≤ 499
COVID-19 deaths per 100,000 population per week	1.9	≤ 0.1	0.2 - 0.4	0.5 - 1	1.1 - 2	≥ 2.1
Percent change in deaths per 100,000 population	35.7%	≤ -26.0%	-25.9% - -11.0%	-10.9% - 0.0%	0.1% - 10.0%	≥ 10.1%
Percent inpatient hospital beds occupied with COVID-19	4.1%	≤ 5.0%	5.0% - 10.0%	10.0% - 15.0%	15.0% - 15.0%	≥ 15.0%
Percent ICU beds occupied with COVID-19	8.0%	≤ 75.0%	75.1% - 80.0%	80.1% - 85.0%	85.1% - 90.0%	≥ 90.1%



Applying Metrics to Buncombe County

Metric	Value	Dark Green	Light Green	Yellow	Orange	Red
New cases per 100,000 population per week	101	≤ 4	5 - 9	5 - 9	51 - 100	≥ 101
Percent change in new cases per 100,000 population	-9.0%	≤ -26.0%	-25.9% - -11.0%	-10.9% - 0.0%	0.1% - 10.0%	≥ 10.1%
Diagnostic test result positivity rate	4.0%	≤ 2.9%	3.0% - 4.9%	5.0% - 7.9%	8.0% - 10.0%	≥ 10.1%
Change in test positivity	-0.3%	≤ -2.1%	-2.0% - -0.6%	-0.5% - 0.0%	0.1% - 0.5%	≥ .6%
Total diagnostic tests resulted per 100,000 population per week	2095	≥ 2001	1001 - 2000	750 - 1000	500 - 749	≤ 499
COVID-19 deaths per 100,000 population per week	1.9	≤ 0.1	0.2 - 0.4	0.5 - 1	1.1 - 2	≥ 2.1
Percent change in deaths per 100,000 population	35.7%	≤ -26.0%	-25.9% - -11.0%	-10.9% - 0.0%	0.1% - 10.0%	≥ 10.1%
Percent inpatient hospital beds occupied with COVID-19	4.1%	≤ 5.0%	5.0% - 10.0%	10.0% - 15.0%	15.0% - 15.0%	≥ 15.0%
Percent ICU beds occupied with COVID-19	8.0%	≤ 75.0%	75.1% - 80.0%	80.1% - 85.0%	85.1% - 90.0%	≥ 90.1%

If metrics in Section 3 are ORANGE or RED, recommendations will be brought to BoC



Chance of Transmission	HIGHEST	HIGH	MEDIUM	LOW	LOWEST
Person with COVID-19					
Uninfected Person					

@NCDHHS • #COVID19NC

