

Nantahala and Pisgah National Forests Proposed Forest Plan

130 Day Comment Period~ February 14 to June 29, 2020



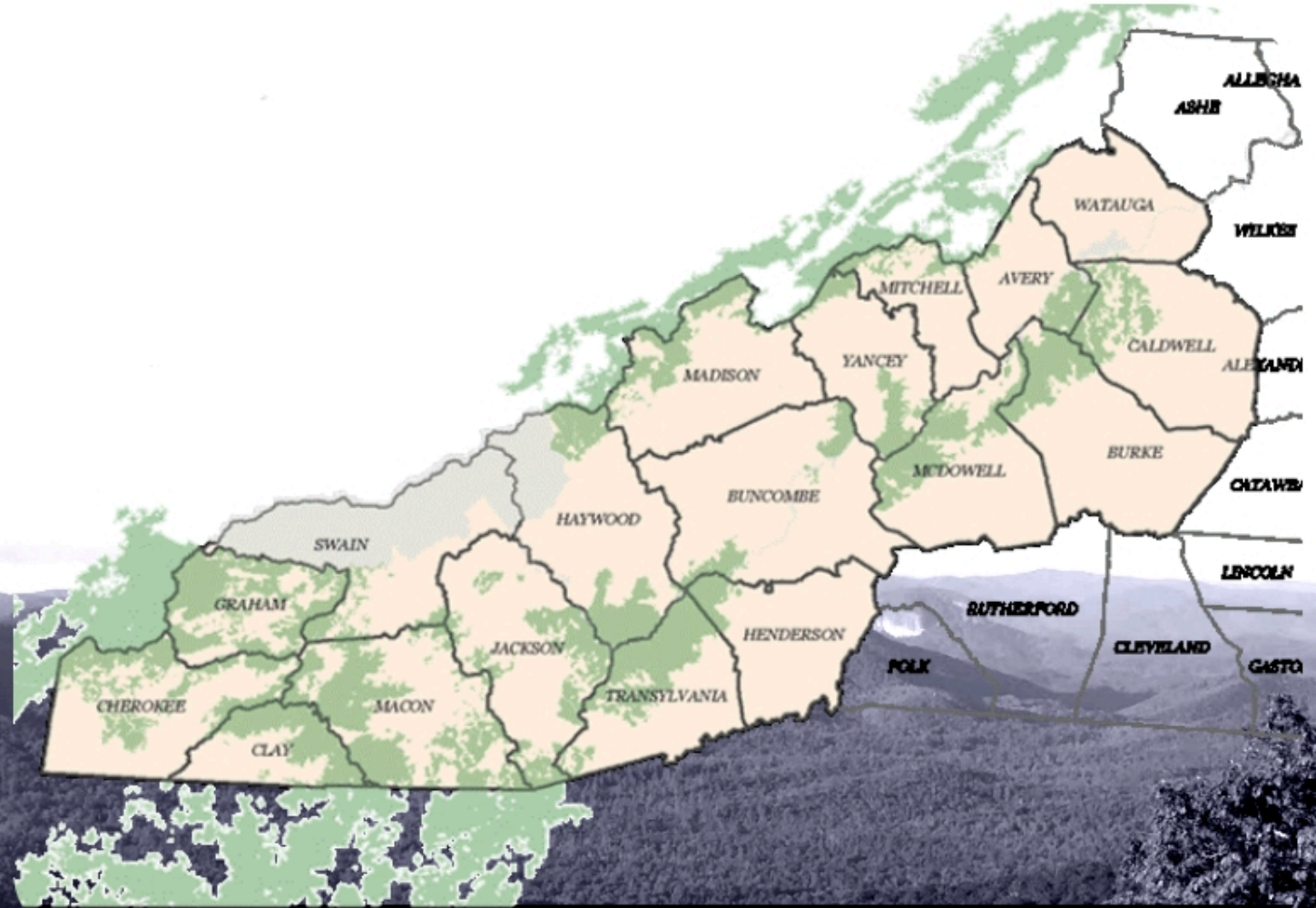
Nantahala and Pisgah National Forests

1,045,000 ± million acres

18 WNC Counties

Multiple Uses:

- Access and Transportation
- Air and Climate Change
- Aquatic and Terrestrial Ecosystems
- Community Connections, Public Involvement and Education
- Geology, Soils, Minerals and Energy
- Lands and Special Uses
- Outdoor Recreation, Wildlife and Scenery
- Plant and Animal Diversity
- Timber and Non-timber Forest Products
- Tribal and Cultural Resources
- Water and Watersheds
- Wildland Fire and Fire Management....and more



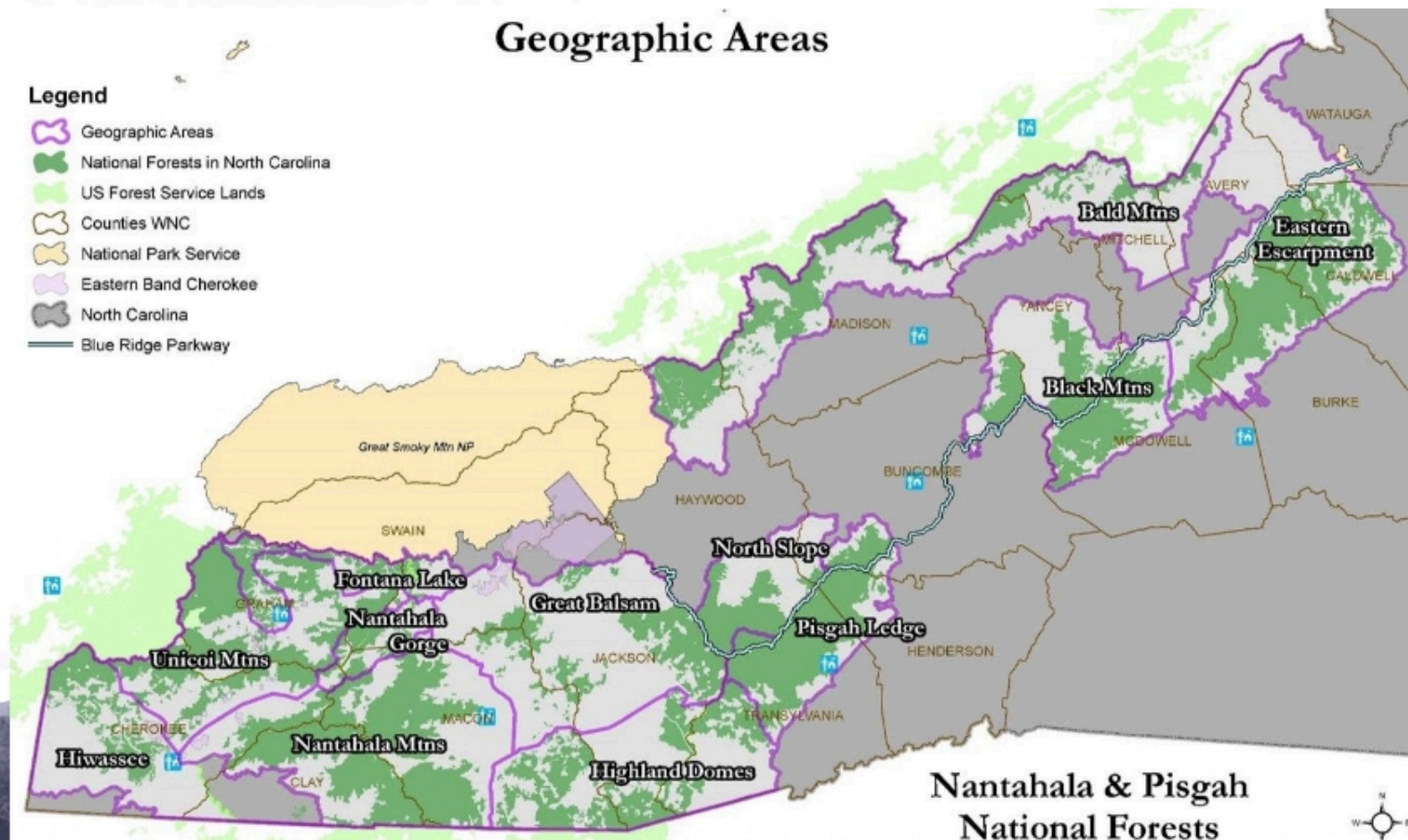
Places Matter~ 12 Geographic Areas

- Describe restoration and sustainable recreation opportunities
- Connections to communities
- Partnership opportunities
- Reflect places and uses that are important across the forest

Geographic Areas

Legend

- Geographic Areas
- National Forests in North Carolina
- US Forest Service Lands
- Counties WNC
- National Park Service
- Eastern Band Cherokee
- North Carolina
- Blue Ridge Parkway



94 management plans across the 18 counties were reviewed, including a representation of municipalities, for consistency with our proposals. We added goals where possible to reflect shared priorities.



We Listened

- Partnering with Others
 - Added theme
 - Added tiered objectives
- Connecting People to the Land
 - Throughout
- Unprecedented public involvement



Connecting
People to
the Land



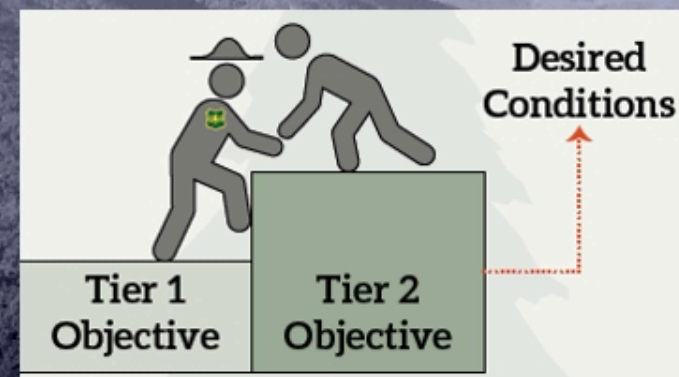
Sustaining
Healthy
Ecosystems



Providing
Clean and
Abundant
Water



Partnering
with Others



Economics

All action alternatives include:

- Increase active forest management- from 800 ac to 1600/3800 acres = 1.5%-3.8% of the forest
- Increase sustainability and quality of recreation - More than 4 million visitors/yr enjoying and impacting the forest
- Improved road conditions and access



Increase jobs and revenue- nearly 300 jobs and \$5-13 million income



Plan Revision Process

ASSESSMENT

Assess the current condition of the forest.
Public input and involvement.



DRAFT PLAN/ AFFECTS ANALYSIS

Develop a plan that represents the range of input.
Approaches or 'alternatives' to implement the plan.
Analyze the effects of the alternatives on the land.



MOVE TOWARD FINAL PLAN

Respond to comments.
Draft a Final.
Objection Period.
Final decision.



COLLAORATION/ PUBLIC INPUT

Hundreds of meetings.
Thousands of comments received.



PUBLIC REVIEW OF DRAFTS

Extended and modified

130 day public comment period to review drafts

Virtual County Meetings

Virtual Open Houses





Key Pieces

Reference Website for:
 2-minute overview video
 Reader's Guide
 2 Story Maps
 Consolidated Objectives
 Your Geographic Areas in the Plan



o [Site Map](#)

National Forests in North Carolina

- > [Home](#)
- > [Special Places](#)
- > [Recreation](#)
- > [Alerts & Notices](#)
- > [Passes & Permits](#)
- > [Maps & Publications](#)

~ **Land & Resources Management**

- o [Planning](#)
- o [Projects](#)
- o [Resource Management](#)
- o [Geospatial Data](#)

- > [Learning Center](#)
- > [Working Together](#)
- > [About the Forest](#)
- > [News & Events](#)

Contact Information

National Forests in North Carolina

Forest Supervisor's Office
 160 Zillioea St. Suite A
 Asheville, NC 28801
 828-257-4200

PLEASE NOTE: This is an information and administrative office located in Asheville, NC and is not actually in the forest.

Ranger District Offices

In an emergency, call 911

Contact Us

Nantahala and Pisgah National Forests Plan Revision



The Nantahala and Pisgah forest plan is being revised to handle the challenges of managing our complex ecosystems to meet the needs of all users for the next 15 years. The draft plan has been developed in coordination with tribal, state, and county governments and significant collaboration with the public. The draft plan and draft EIS are available for public review and comment from February 14-May 14, 2020. This public comment period is an additional opportunity for you to be part of building a plan that reflects your interests.

Start here

- ▶ If you just want a quick overview, watch this 2-minute video featuring Planning Team Leader Michelle Aldridge.
- ▶ If you want an orientation with a brief synopsis of issues, look at [The Reader's Guide](#).
- ▶ If you just want to visualize some of what the plan will achieve, look at the [Consolidated Objectives](#).
- ▶ If you like maps, look at the ArcGIS online story maps about goals on different parts of the forest and four alternatives for how the forest plan could be applied. (These maps work best using Chrome browser.)
- ▶ If you're new to forest planning and want general information on forest management plans and the plan revision process start with the [Forest Planning Overview](#) page.

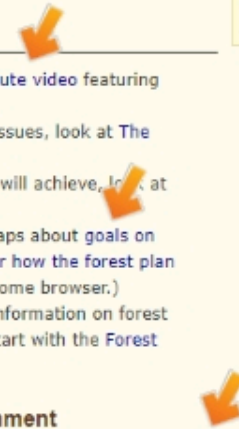
Official Documents for Public Review and Comment

- ▶ [Proposed Forest Plan](#)

Alerts & Warnings

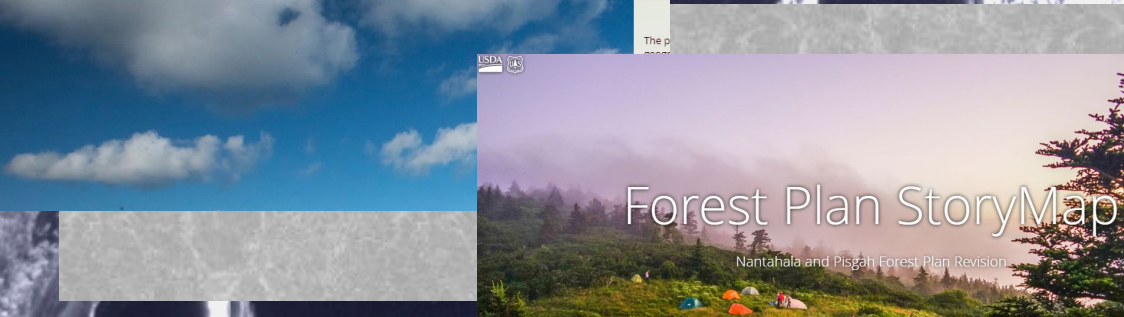
- ⚠ [Joyce Kilmer Trail Lower Loop Closed due to Rain](#)
- ⚠ [Moss Knob Shooting Range Closure Extended through 2/27](#)
- ⚠ [Wayehutta OHV trail system temporarily closed due to landslide](#)
- o [Portion of Davidson River Campground to Reopen](#)
- o [Panther Top Shooting Range Proposed Weekly Closure for Maintenance](#)
- o [Deep Gap Road Closed for Repairs Starting Nov. 25](#)
- o [Overmountain Shelter on Pisgah NF Closed Until Further Notice](#)
- o [Wilson Creek Area Roads Significantly Damaged](#)
- o [Forest Service Reminds Visitors, Bear Canisters Required for Backcountry Use](#)
- o [Emergency Closure Order Prohibiting Target Shooting on Croatan Extended](#)



[View All Forest Alerts ...](#)



Nantahala and Pisgah Forest Plan Revisions - Geographic Areas

- Wellcome!
- Overview Map
- Eastern Escarpment
- Bald Mountains
- Black Mountains
- Pisgah Ledge
- North Slope
- Highlands





**We look forward to
continuing the conversation, now and
through plan implementation.**

www.fs.usda.gov/goto/nfsnc/nprevision

Alice Cohen
Collaboration Specialist
alice.cohen@usda.gov

