



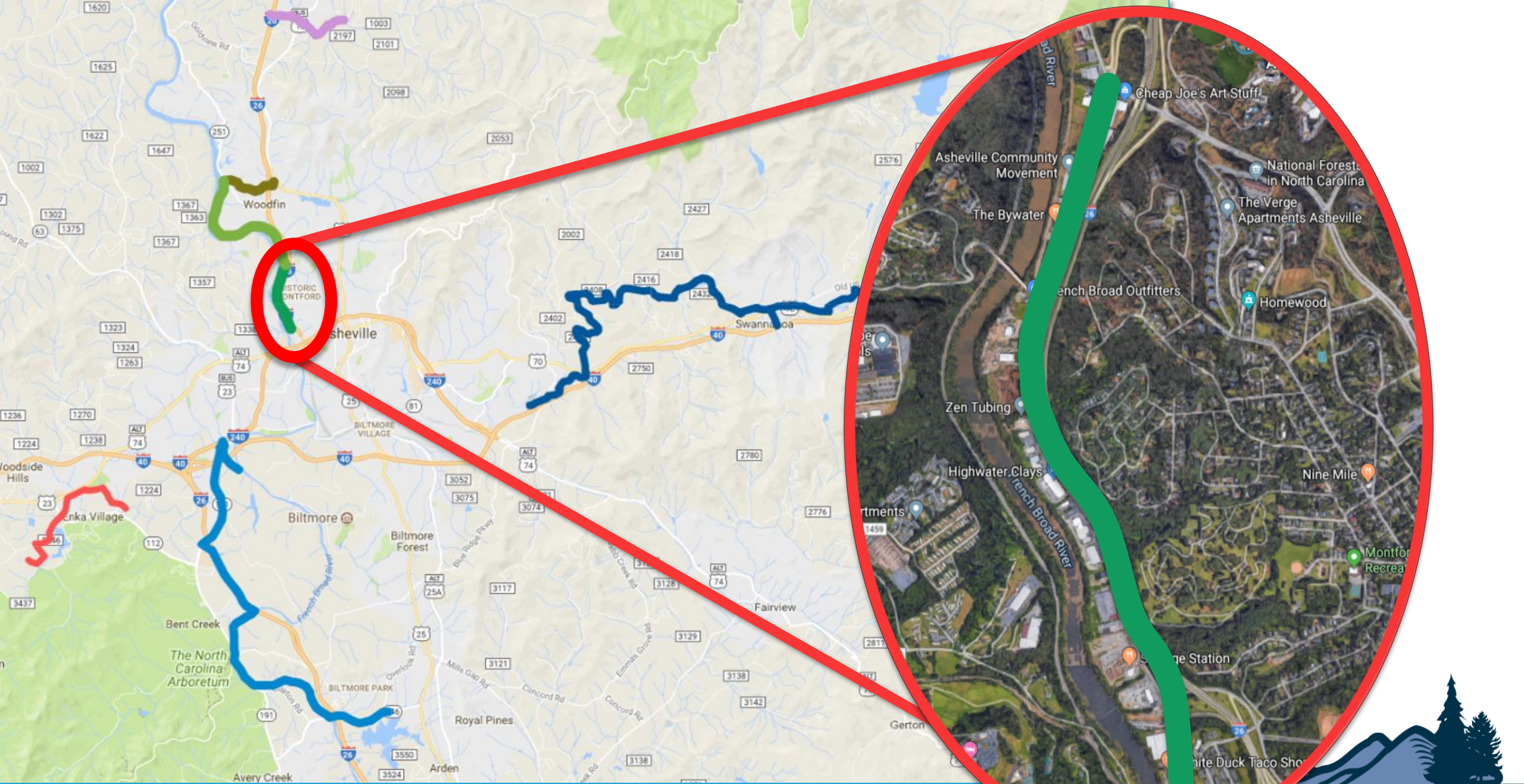
RADTIP CONNECTOR

Presented by

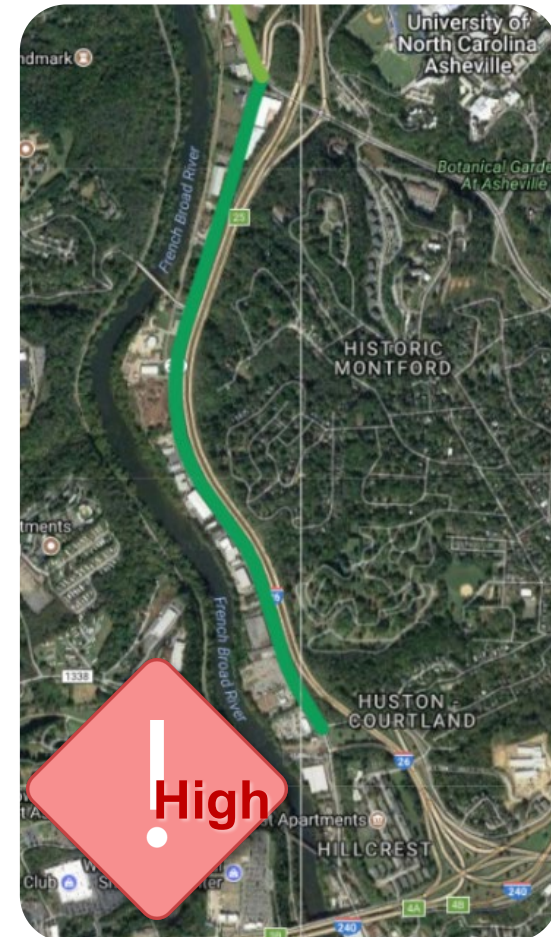
Josh O'Conner, AICP, CPRE

Recreation Services





RADTIP Connector



Bounds		Riverside Drive from Broadway to Hill Street (Connecting at RADTIP)
Approximate Distance (Miles)		1 mile
Cost		\$1.6 million to \$3.2 million depending on option selected (full cost of construction). Does not include land acquisition.
Timeline		Awaiting NC DOT project commencement, estimated construction 2019 or 2020.
Project Phase	Feasibility	Complete
	PE/Design	Funded. Waiting for funding availability. Grant turned over to City of Asheville.
	Construction	No
Current Grant Total		\$300,000
Current County Commitment		\$20,000 (with \$20k match from CoA and \$20k match from FoCB)
Funding Outlook		Potential alignment with NC DOT project. NC DOT would construct, we would be required to pay 40% of materials cost.
Known Constraints		Cost, environmental issues, and property ownership make constructing a greenway adjacent to the river significantly less feasible.
Known Opportunities		Realignment of I-26 and Riverside Drive create an opportunity to construct the project under agreement with NC DOT
Funding Rescission		10 years from PE/Design agreement
Funding Sources	STBG (Federal Highway)	Yes
	NC DOT	Yes
	TDA	Yes

Summary

- Buncombe County, with Board approval, will donate it's match to COA
- City of Asheville will be responsible for grant administration along with design and engineering
- Buncombe County will still retain the ability to connect the “missing mile” of greenway via a sidewalk
- Sidewalk cost will be shared with NCDOT at a cost of 40% of materials
- Return of Funds Clause: Work must begin within 3 years of execution



Requested Action

Approve the Donation Agreement between Buncombe County and the City of Asheville whereby the County will provide a \$20,000 local match funds dedicated to the City's North RAD Greenway Project from Hill Street to SR 1781 (Broadway)

