



# **Community Health Improvement Plan Update**

## **Board of Commissioners Meeting**

### **December 3, 2019**

Zo Mpofu, Buncombe County HHS

Terri March, MAHEC & Hannah Legerton, MAHEC



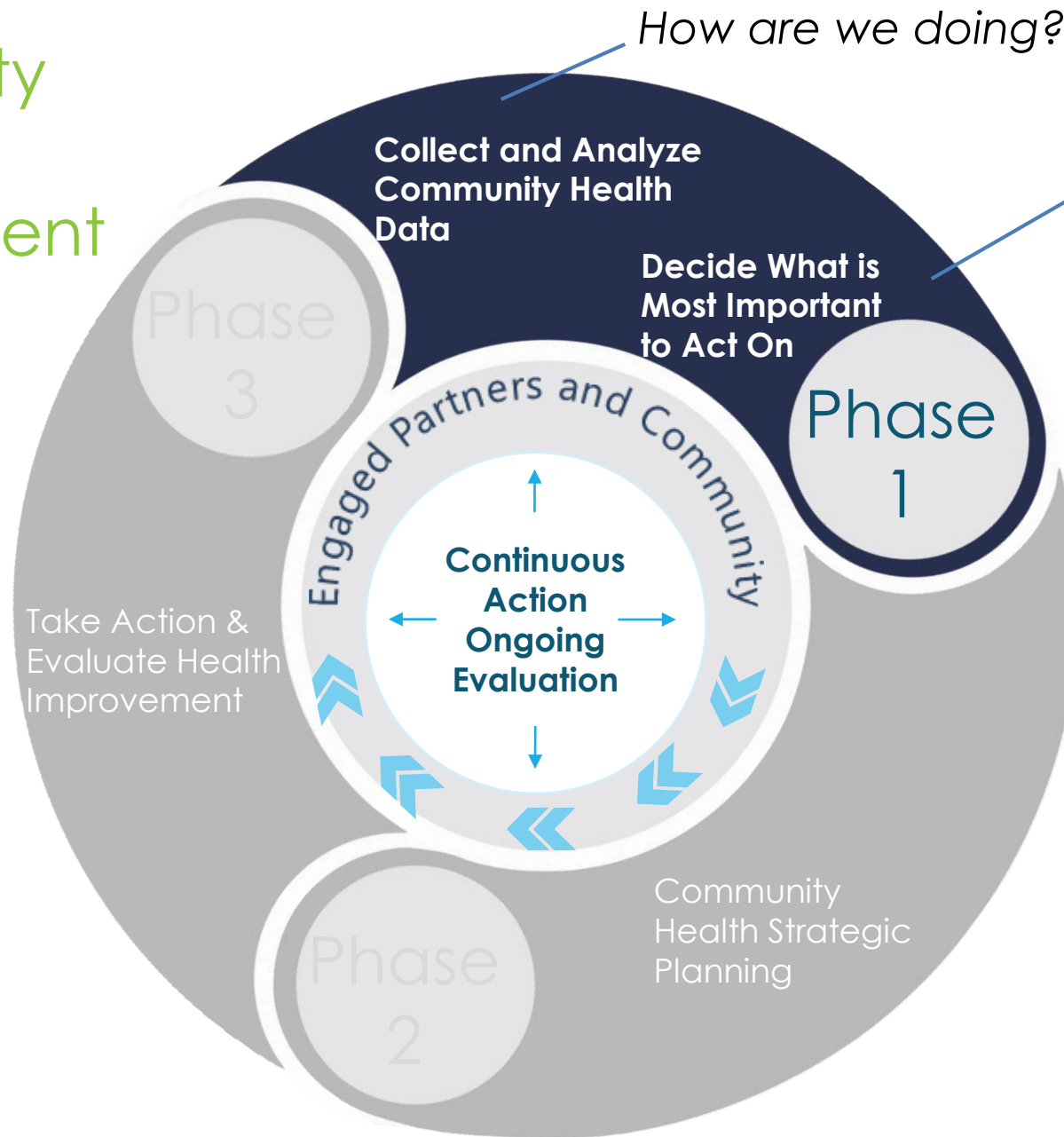
**BUNCOMBE COUNTY**



# Community Health Improvement Process



# Community Health Improvement Process Phase 1



*What is the story behind the data?*

## Local Products + Reporting

### **Public Health Products & Reporting:**

- Community Health Assessment Report

### **Hospital Products & Reporting:**

- Community Health Needs Assessment Summary



# CHA Data & Community Feedback

## Health Conditions Size & Severity, High Concern (Data Team Review)

- **Birth Outcomes & Infant Mortality**
- **Childhood Obesity**
- **Asthma & COPD**
- Cancer Mortality Disparity
- Heart Disease Mortality Disparity
- Diabetes Mortality Disparity
- Alzheimer's
- **Substance Use & Chronic Pain**
- **Mental Health**
- Dental & Oral Health

## Relevant, Impact & Feasibility (Scored by CHIP Advisory)

- **Mental Health**
- **Substance Use & Chronic Pain**
- **Birth Outcomes & Infant Mortality**
- **Childhood Obesity**
- **Asthma & COPD**

## Community Voices (Listening Sessions & One Question Survey)

- Access to Health Care Services
- **Food Insecurity**
- **General Mental Health**
- **Housing**
- Legal Services
- **Substance Use**
- Suicide
- Transportation

## Social Determinants of Health Size & Severity (Data Team Review)

- **Food Insecurity**
- Domestic Violence/Homicides
- **Housing Affordability**
- Poverty
- Grandparents caring for Grandchildren
- Percent of county that is rural

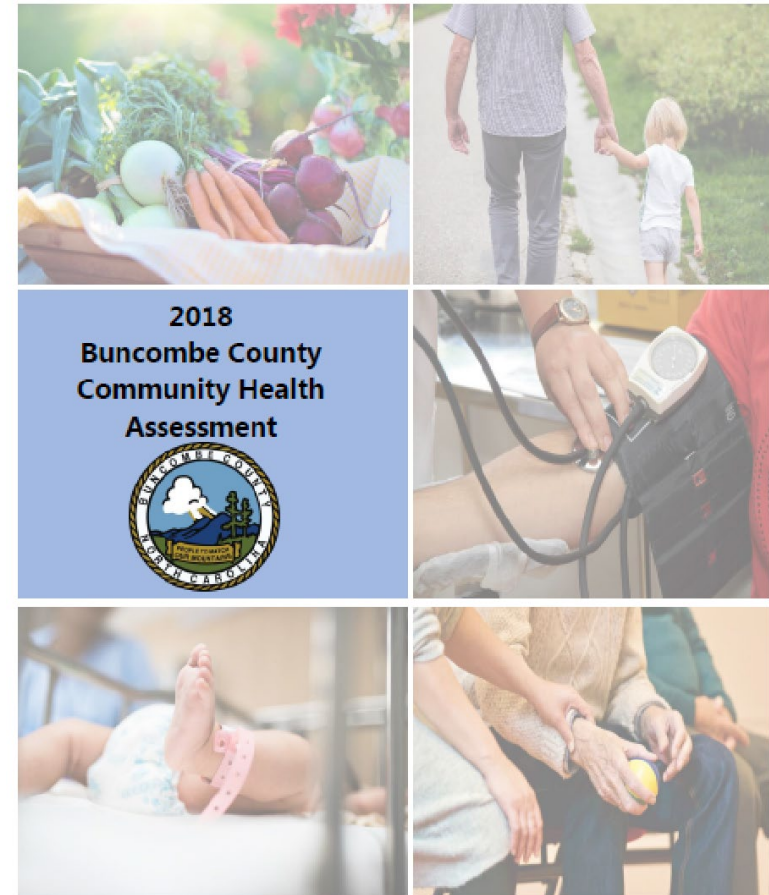


# The 2018 Buncombe Community Health Assessment:



## Health Focus Conditions 2018-2021

- Mental Health (3 years)
- Birth Outcomes & Infant Mortality (10 years)







# What Matters Most for Health & Wellbeing?



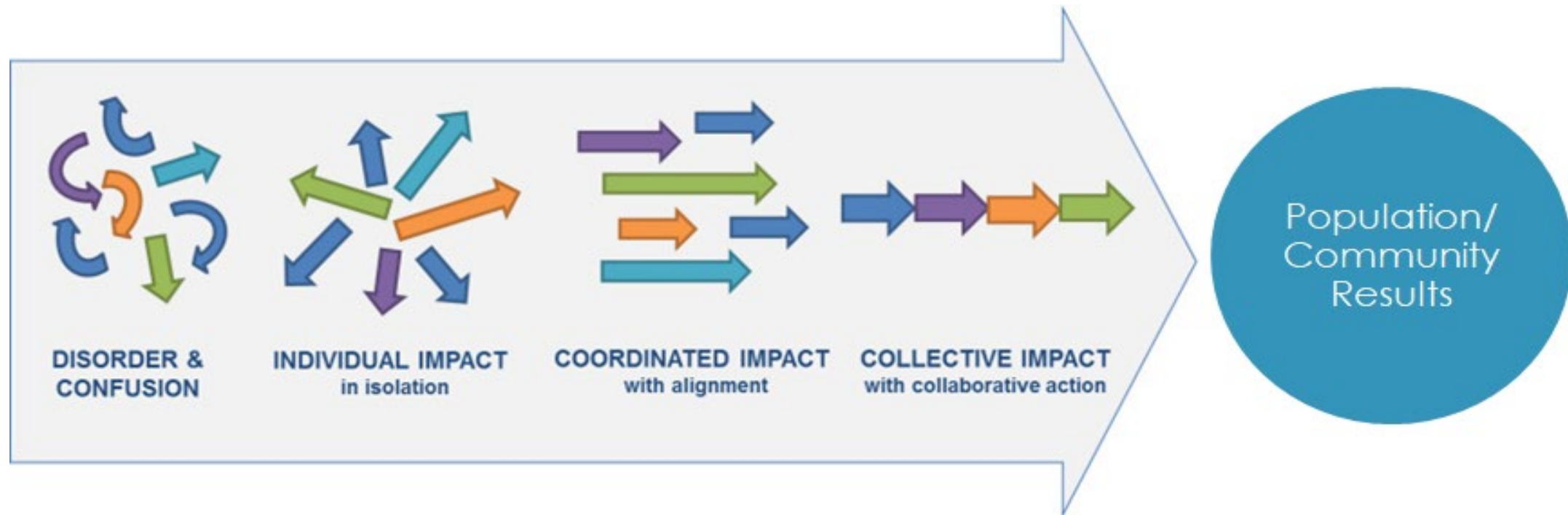


# Addressing Complexity in Community Health Assessment (CHAs) & Community Health Improvement Plans (CHIPs):

Simple	Socially Complicated	Technically Complicated	Complex
<p>The right “recipe” is essential but once you’ve discovered it, <b>replication</b> will get you almost the same result every time Example: <i>Baking a Cake</i></p>	<p>The right “protocols and formulas” are knowable and can even be known, but agreement the problem they will solve, whether it should be solved, who has the right to solve it, and what solution should be used are lacking. Example: <i>Water Conservation</i></p>	<p>The right “protocols and formulas” are needed, as are high levels of <b>expertise</b> and training—<b>experience</b> is built over time to get to the right result, which can be repeated over time with the <b>expectation of success</b>. Example: <i>Sending a Rocket to the Moon</i></p>	<p>There are no “right” recipes or protocols that work in every situation. There are many <b>outside factors</b> that influence the situation, and every situation is <b>unique</b>. Experience helps, but in <b>no way guarantees success</b> Example: <i>Raising a Child</i></p>
			

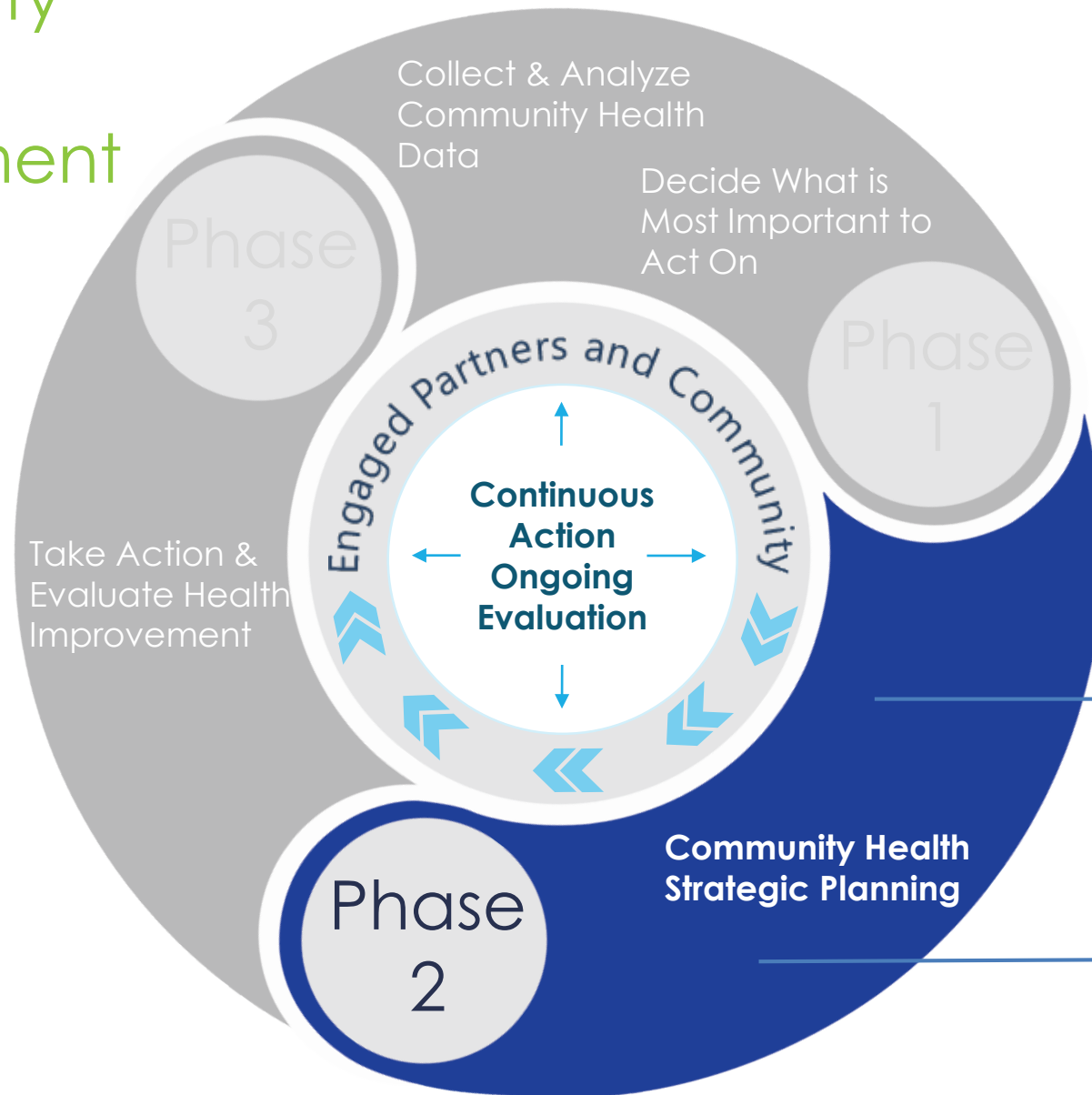


# Moving Towards Collective Impact





# Community Health Improvement Process Phase 2



## Local Products + Reporting

### **Public Health Products & Reporting:**

- Community Health Improvement Plan (e-CHIP) via Results Scorecard
- Action Plan Forms

### **Hospital Products & Reporting:**

- Hospital Implementation Strategy
- IRS Form 990- Schedule H

***Who are the partners making things better?***

***What works to do better?***



# Buncombe County CHIP Action Plan 2019-2021



## Buncombe County HHS-Community Health Improvement Plan (2018-2021)

The 2018 Community Health Assessment priority areas are:

- Health Priority 1 – Mental Health
- Health Priority 2 – Birth Outcomes & Infant Mortality

The following CHIP Scorecard was created and submitted **September 9th, 2019** in order to meet the requirements for the **Buncombe County** Long and/ or Short Term Community Health Improvement Plans.



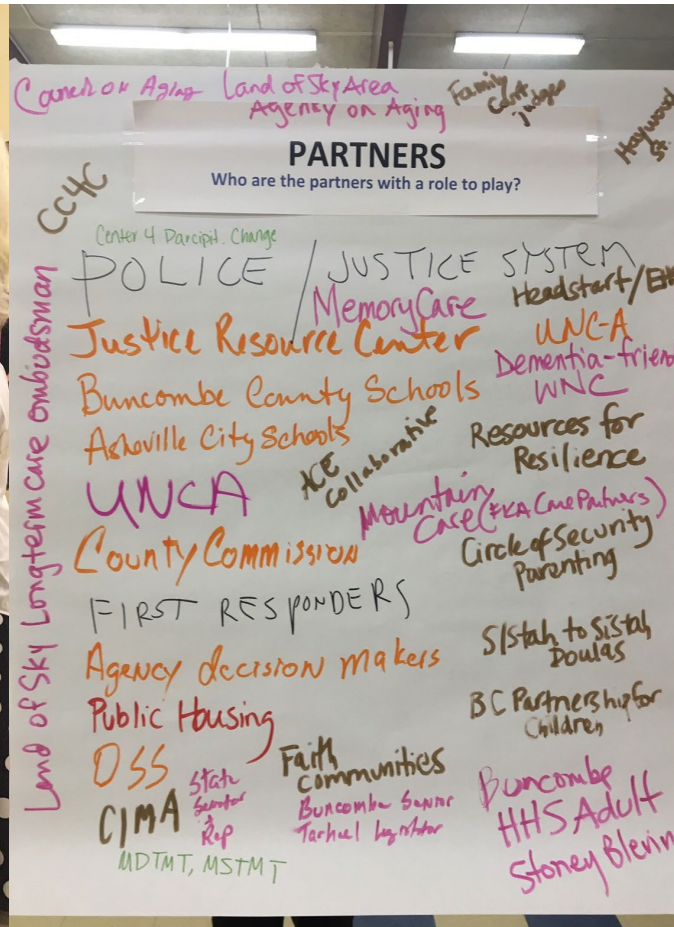
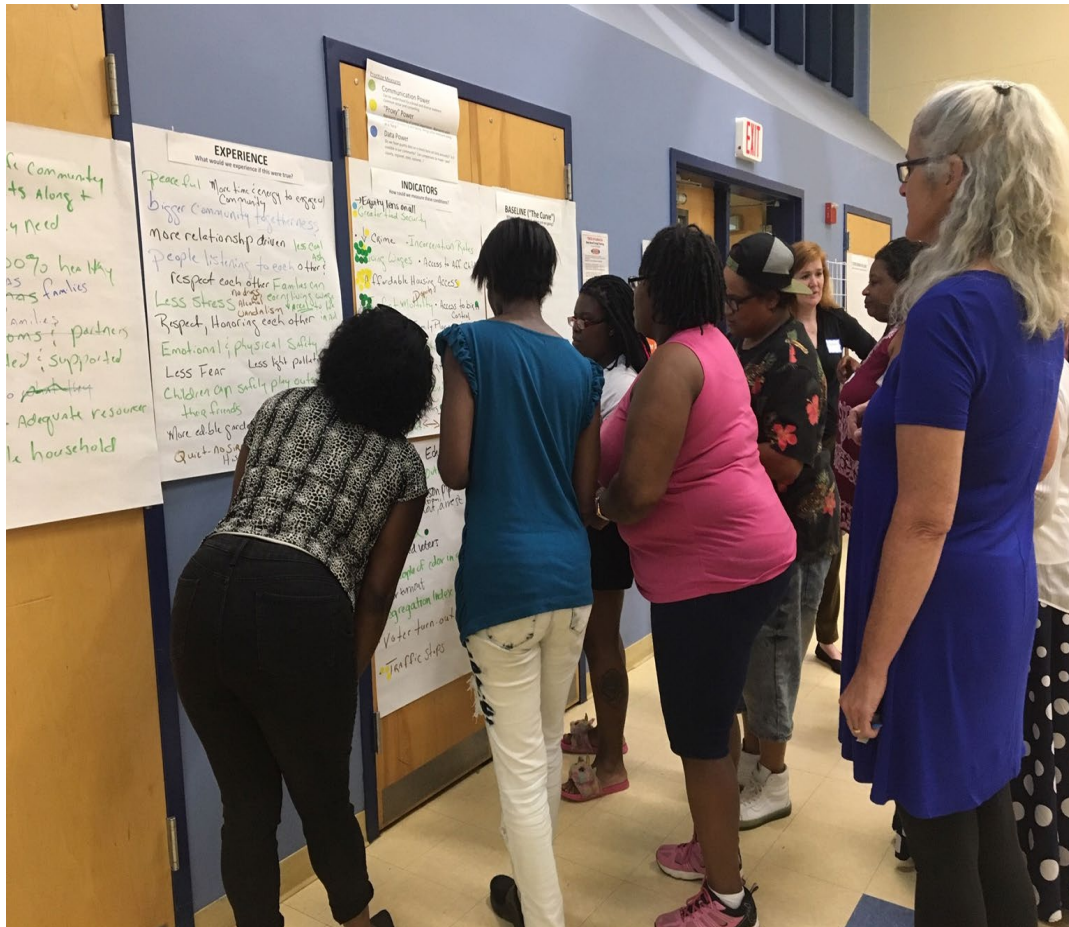
- Talk 2 Action events: (June/July)  
~ 55 participants
- 20+ additional stakeholders informed strategy development
- CHIP Advisory Council
- Submitted Sept. 9 via the CHIP online scorecard
- Living document developed with ongoing community input



BUNCOMBE COUNTY



# Talk 2 Action Community Session – Summer 2019





# Partners Engaged in Developing: Mental Health & Wellbeing Plan

- ABIPA
- ACE Collaborative
- Asheville Bereavement Therapy
- Asheville & Buncombe Co Schools
- Buncombe County: Nurse Family Partnership, DSS, PH, Justice Resource Ctr, Family Justice Ctr
- Buncombe Partnership for Children
- Children First Community in Schools
- Children's Home Society of NC
- City of Asheville
- Family Preservation Services
- Guardian ad Litem Association
- Helpmate
- Jewish Family Services
- MAHEC: FM, BH, Psych, Sports
- Mission Health: Copestone
- Mountain Child Advocacy Ctr
- Mountain Housing Opportunities
- Mt. Child Advocacy Center
- My Daddy Taught Me That
- NAMI
- Pisgah Legal Services
- Resources for Resilience
- Under One Sky
- United Way
- Universal Mental Health Svcs
- Umoja Health, Wellness and Justice Collective
- Under One Sky
- Universal Mental Health Svcs
- Vaya Health
- Verner: Early Childhood Learning
- WNC Community Health Svcs
- WNC Medical Society
- Youth Villages
- YWCA of Asheville



## RESULT

What quality of life conditions do we want?

## RESULT

What quality of life conditions do we want?

A restorative Community, free of stigma that prioritizes & safeguards the health, wellbeing & dignity across all ages & life stages.

An equitable Community that supports the human experience - mind, body, spirit, in times of strength & difficulty, restoration, resilience, self-determination & self-worth regardless of income, race, neighborhood, nationality, ability & age.

And a Community that promotes a level playing field between those seeking support & those offering.

## STORY BEHIND THE CURVE

What are the causes? What is hurting?

## STORY BEHIND THE CURVE

What are the causes? What is helping? What is hurting?

- Providers aren't paid living wages
- Resources are here, but people don't feel safe  
↳ make ppl feel welcome + safe
- Self-advocacy wears people out - constantly having to work for safety/resources
- Stigma AS soon you do well everything is wrong
- family members feeling ostracized for speaking out
- providers + systems responding defensively + minimize family/individual's concerns
- working poor can't get services - gap
- limited svcs for non-Eng, Economic
- Latinx pop. fearful of anywhere they need to give name, phone, etc. →
- gap b/w outpt & hospitalization
- Sub. use prob (not just opioid crisis)
- Institutionalized Racism / Urban Rev
- Prison/jail biggest MH svc. People released to nothing





## Mental Health and Well-Being - Short-Term CHIP

<div><div>-</div><div>R</div></div>	<div>MentalHealth</div> <div>All in Buncombe County are able to live free of stigma, supported in mind, body and spirit in times of both strength and difficulty with resilience, self-determination and a positive sense of self-worth regardless of income, race, neighborhood, nationality, ability and age. 📄</div>					
<div><div>+</div><div>CI</div></div>	<div>MentalHealth</div> <div>Quarterly Mental Health Related Visits to the Emergency Department Related to Suicide Ideation</div>		Q2 2019	612#	<div><div>↗</div><div>1</div></div>	32% <div>↗</div>
<div><div>+</div><div>CI</div></div>	<div>MentalHealth</div> <div>Quarterly Mental Health Related Visits to the Emergency Department Related to Anxiety, Mood and Psychotic Disorders</div>		Q2 2019	5,975#	<div><div>↗</div><div>3</div></div>	3% <div>↗</div>
<div><div>+</div><div>S</div></div>	<div>MentalHealth</div> <div>Support Cross-sector Collaboration to Create a Trauma-Responsive and Resilience-focused Community 📄</div>		Time Period	Current Actual Value	Current Trend	Baseline % Change
<div><div>+</div><div>S</div></div>	<div>Birth Equity</div> <div>Advance Cross-sector Collaboration to Undo Racism 📄</div>		Time Period	Current Actual Value	Current Trend	Baseline % Change



# Partners Engaged in Developing: Birth Equity Plan

- ABIPA
- Asheville Bereavement Therapy
- BCHHS
- (BCHHS) Nurse Family Partnership
- BC Community Engagement Team
- BC Partnership for Children
- Children First/Communities in Schools
- *CHIP Advisory Council*
- Community Care of WNC
- Gentle Mothering
- Guardian Ad Litem Association
- Homegrown Babies
- MAHEC
- Mission Health
- Mother to Mother
- *Mothering Asheville*
- Mt. Zion Community Development (Project NAF)
- Mountain Housing Opportunities
- Mountain True
- My Daddy Taught Me That (MDTMT)
- NC Center for Health & Wellness
- Pisgah Legal Services
- SistasCaring4Sistas
- Umoja Health, Wellness and Justice Collective
- United Way
- UNC Eshelman School of Pharmacy
- VA Medical Center
- VAYA Health
- Western Carolina Medical Society
- WNC Healthy Impact
- YMCA of WNC
- YWCA of Asheville



## INDICATORS

How could we measure these conditions?

- Equity lens on all
- Greater food security
- Crime • Incarceration Rates
- Living Wages • Access to Aff. Childcare
- Affordable Housing Access
- Infant Mortality • Access to birth control
- Access to Family Planning
- Rates of Prematurity
- Fetal deaths (miscarriages) • Low Birth Wt
- Access to Childbirth Ed. / mothers' padlocks
- Breastfeeding Rates
- Maternal Mort. ↔ Disparity
- Quality Sex Education
- Educational outcomes
- School to Prison pipeline ⇒  
suspension, expulsion, school pushout, arrest
- Violence
- Registered voters
- % people of color in office
- voter turnout
- Segregation Index
- Voter turn-out
- Traffic stops



BUNCOMBE COUNTY





# STORY BEHIND THE CURVE

What are the causes? What is helping? What is hurting?

## Helping?

NFP  
Project NAF

Home Visiting Programs

Doulas → SC4S

ABIPA holistic approach

Efforts to tackle provider bias (MATEC)

Providers acting w/ an ethical approach

Providers + clinical staff going through REI

Improved reproductive health counseling, edu, svcs (Title 10)

Preconception health

↑ in men mentoring boys  
↳ fatherhood, manhood

↑ young men's involvement/participation in birth/planning

↑ nonprofits working w/ youth comprehensively (MDTNT/USTAT)

## Hurting?

Lack of Affordable housing

Need for living wage

Violence

School to prison pipeline

Segregation

Provider bias/racism

Racism/white supremacy

inequality/institutional racism in local schools

patient bias that creates trust & impairs quality health care

Lack of diversity in providers (cultural competency)

fewer/no depictions of + mothers of color in pictures on the wall

Lack of voice the

Making doulas + patient advocates covered by insurance

#3(e) STRATEGY  
INCREASE Doula CARE ACCESS particularly for ♀ of high Risk and in underserved communities

Pathways to economic independence

#12 Undo Racism  
Root Cause Trainings ABIPA, Birth on the ground non-profits

Patient directed off site visits

Infuse equity into everything (policy, program/service provision, training, environment)  
Equity in all policies

INCREASE ACCESS to preconception CARE  
Disaster Participant CARE  
Ex: Project NAF consultation/outreach

Expand community involvement in designing + implementing programs + services

Opportunities for robust education on reproductive health (access to services)

More scholarships/sponsorships funding for students of color to enter medical field + keep attaining education - from entry level to higher education

More events to build relationships betw grassroots, community led organizations + bigger community agencies

get providers + orgs. together on this (not just MATEC)  
LoPATL local orgs. to do policy eval, codesign of trainings, walk through of the spaces, etc. to meet

Apply + require Robust racial equity training for providers across the board -



BUNCOMBE COUNTY



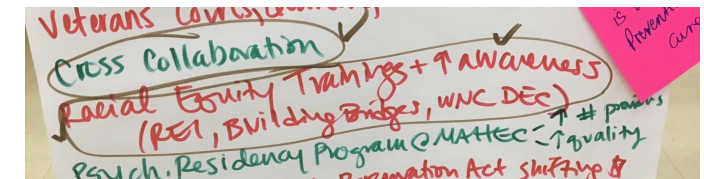
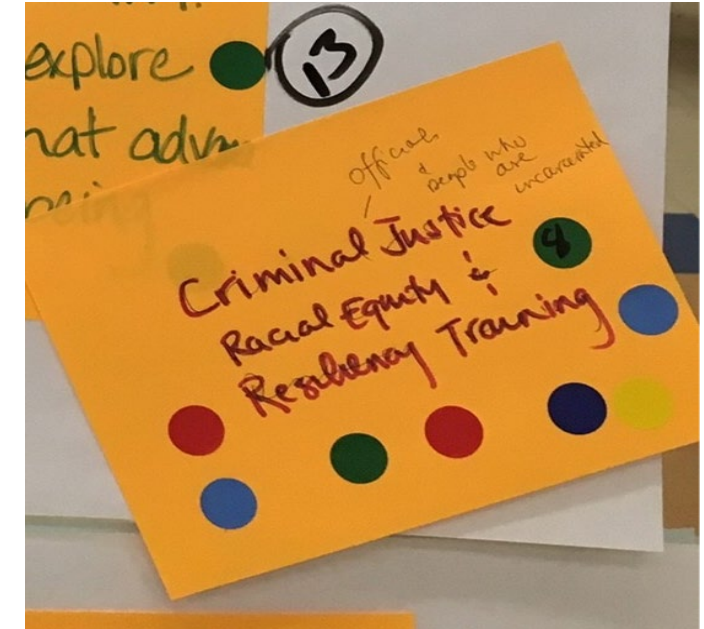
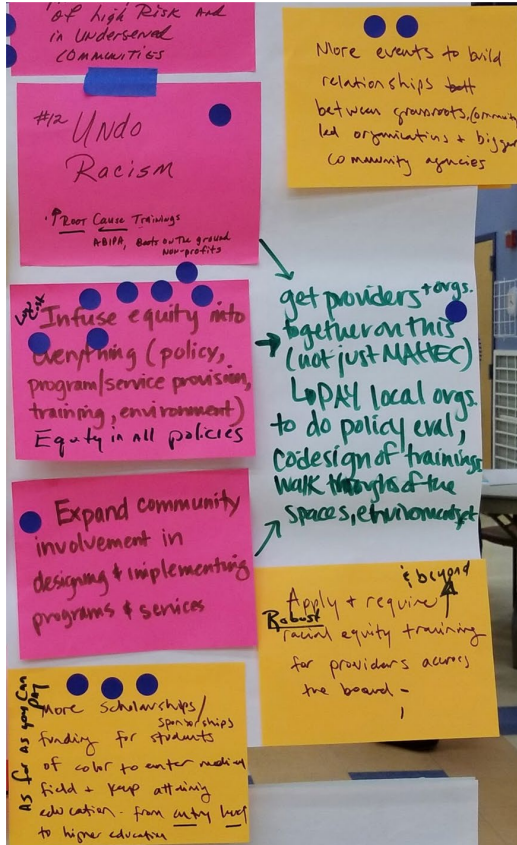
## Birth Equity - Long Term CHIP

<div> <div> <div></div> <div>R</div> </div> <div>Birth Equity</div> </div>	A thriving and safe community, leading to 100% healthy births, mamas, and families. A community where families are educated and supported with access to adequate resources and a stable household. 📄	Most Recent Period	Current Actual Value	Current Trend	Baseline % Change
<div> <div>+</div> <div>CI</div> </div> <div>Birth Equity</div>	Infant Mortality Rate - Buncombe Total (with comparisons) (2007-2018)	2018	5.1	<div> <div>↘</div> <div>1</div> </div>	-25% <div>↘</div>
<div> <div>+</div> <div>CI</div> </div> <div>Birth Equity</div>	Infant Mortality Inequity Ratio: Comparison of African American and White Infant Mortality in Buncombe County (2010-2018)	2018	4.0	<div> <div>↗</div> <div>5</div> </div>	60% <div>↗</div>
<div> <div>+</div> <div>S</div> </div> <div>Birth Equity</div>	Provide ongoing support to evidence-based strategies to improve maternal care, including doula care and other pregnancy home visiting programs 📄	Time Period	Current Actual Value	Current Trend	Baseline % Change
<div> <div></div> <div>S</div> </div> <div>Birth Equity</div>	Promote breastfeeding friendly policies and services in local communities 📄	Time Period	Current Actual Value	Current Trend	Baseline % Change
<div> <div>+</div> <div>S</div> </div> <div>Birth Equity</div>	Advance Cross-sector Collaboration to Undo Racism 📄	Time Period	Current Actual Value	Current Trend	Baseline % Change





# Overarching Strategy: Advancing Cross-Sector Collaboration to Undo Racism



BUNCOMBE COUNTY



# Social Determinants of Health: 5 Domains

RACISM & DISCRIMINATION				
Economic Stability	Education	Health & Healthcare	Neighborhood & Built Environment	Social & Community Context
Poverty	High school graduation	Access to healthcare	Access to healthy food/safe parks	Social cohesion
Employment	Language & literacy	Access to primary care	Density of alcohol, tobacco, cannabis establishments	Civic participation
Food security	Early childhood education	Health literacy	Crime & violence	Incarceration
Housing stability	\$/per student	Health outcomes	Environmental exposures	Networks

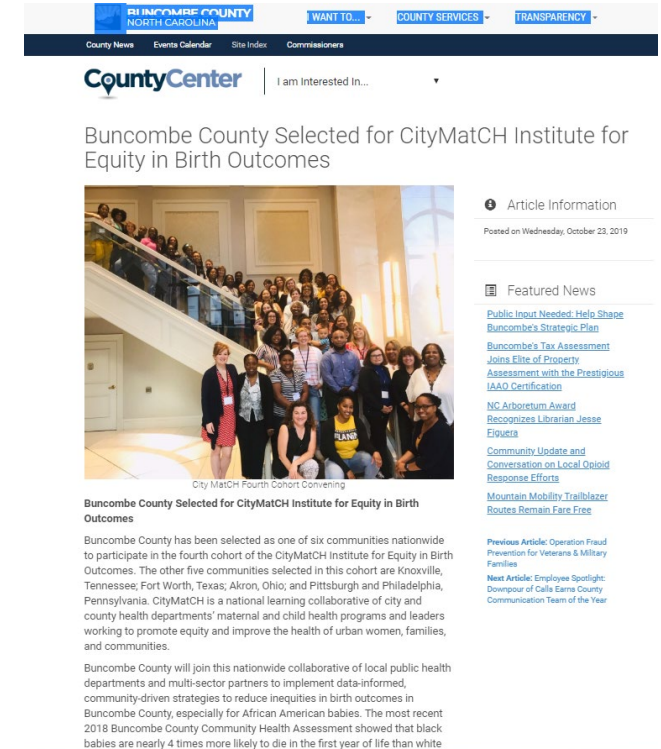
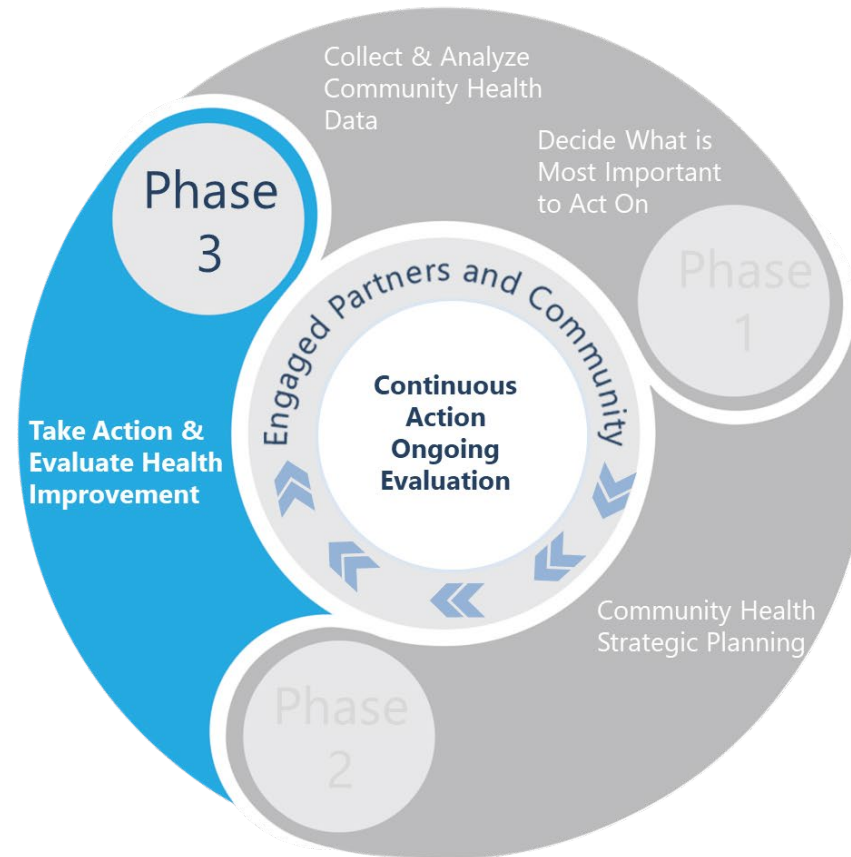
Adapted from: Medicaid and Social Determinants of Health: Adjusting Payment and Measuring Health Outcomes  
[http://www.statenetwork.org/wp-content/uploads/2017/07/SHVS\\_SocialDeterminants\\_HMA\\_July2017.pdf](http://www.statenetwork.org/wp-content/uploads/2017/07/SHVS_SocialDeterminants_HMA_July2017.pdf)





# NEXT STEPS FOR CHIP

- Community Partner Convenings
- CityMatCH's Equity Institute
- Advancing Cross Sector Collaboration to Undo Racism
- We Take Action!



# Questions

