



# Harvard Affordable Housing Symposium

*Presented by*

Nathan Pennington, CFM

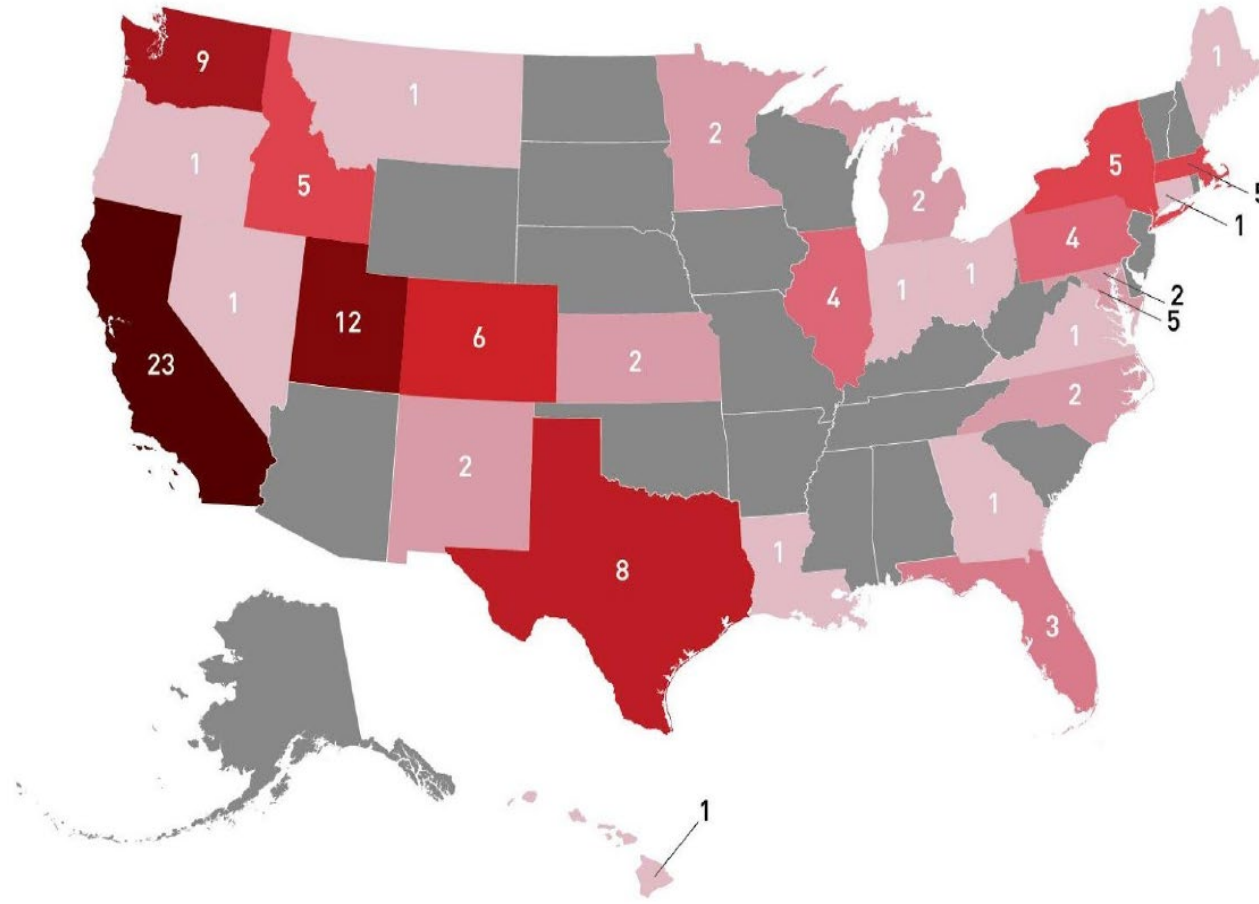
Planning Director



**BUNCOMBE COUNTY**

# Nationwide Search

Ivory Prize Applications by State

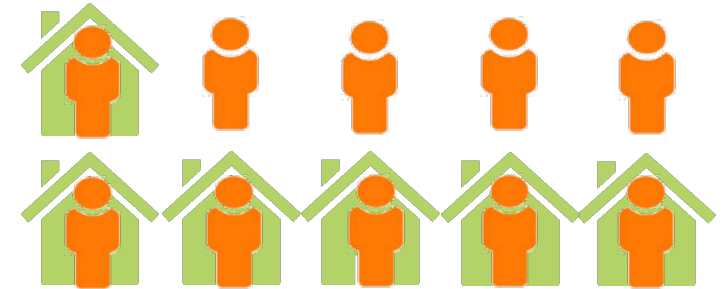


# The Nation's Housing Affordability Challenge

New and used home sales  
affordable to a family  
earning median income

**78%**  
Affordable

**57%**  
Affordable

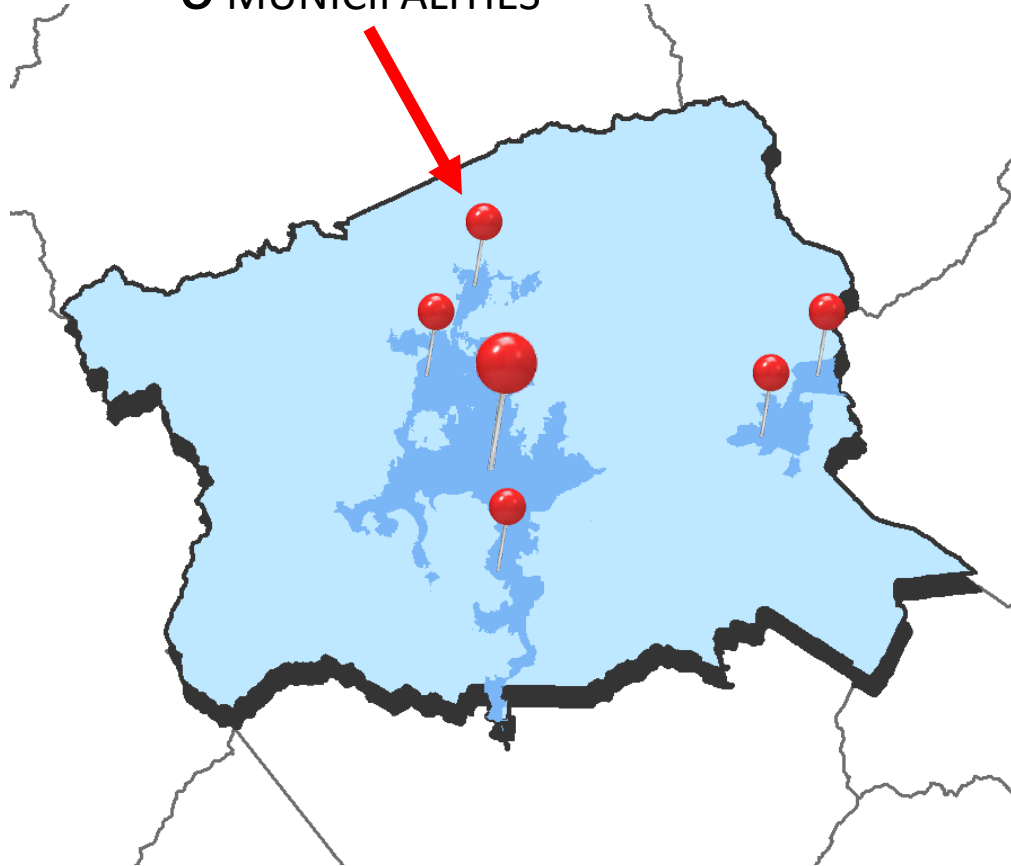


In 2015 an estimated  
1 million new households were  
created, but only 620,000 new  
homes were built



# Buncombe Chosen

6 MUNICIPALITIES



A tourist and gateway community with a number of visitors and people with second homes. It can be hard for service industry and year-round low to moderate income families to find stable, affordable housing.

## **Housing affordability is a strategic priority:**

- Established an Affordable Housing Services Program
- Modified zoning to reduce setbacks and minimum lot sizes
- Created a Community Oriented Development program to increase density for affordable or workforce projects



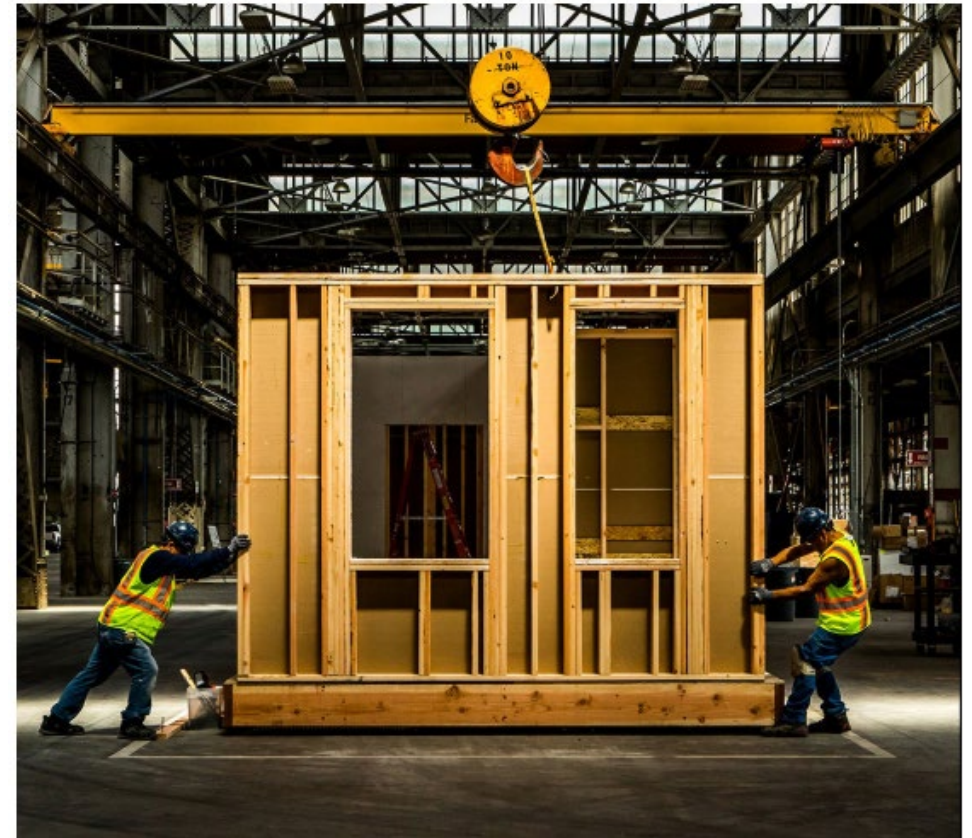
# Harvard Symposium

## CHALLENGES ACROSS THE COUNTRY:

- Stringent land-use regulations
- High construction costs
- Shortage of skilled laborers

## CONFERENCE FOCUS:

- Increase awareness of innovations in housing
- Spur connections and conversation to advance new, innovative approaches
- Ambitious, feasible, and scalable ideas



<https://www.jchs.harvard.edu/calendar/housing-and-innovation-lessons-ivory-prize>

