



# Community Health Improvement Process

Jan Shepard

Buncombe County Public Health Director

# Desired Results for Today

- Summary of the Community Health Assessment & Improvement Process (CHA & CHIP)
- Overview of the Data & Prioritization Process
- Leveraging Partnerships
- Review the stand-out health conditions in Buncombe County
- What's next in community health

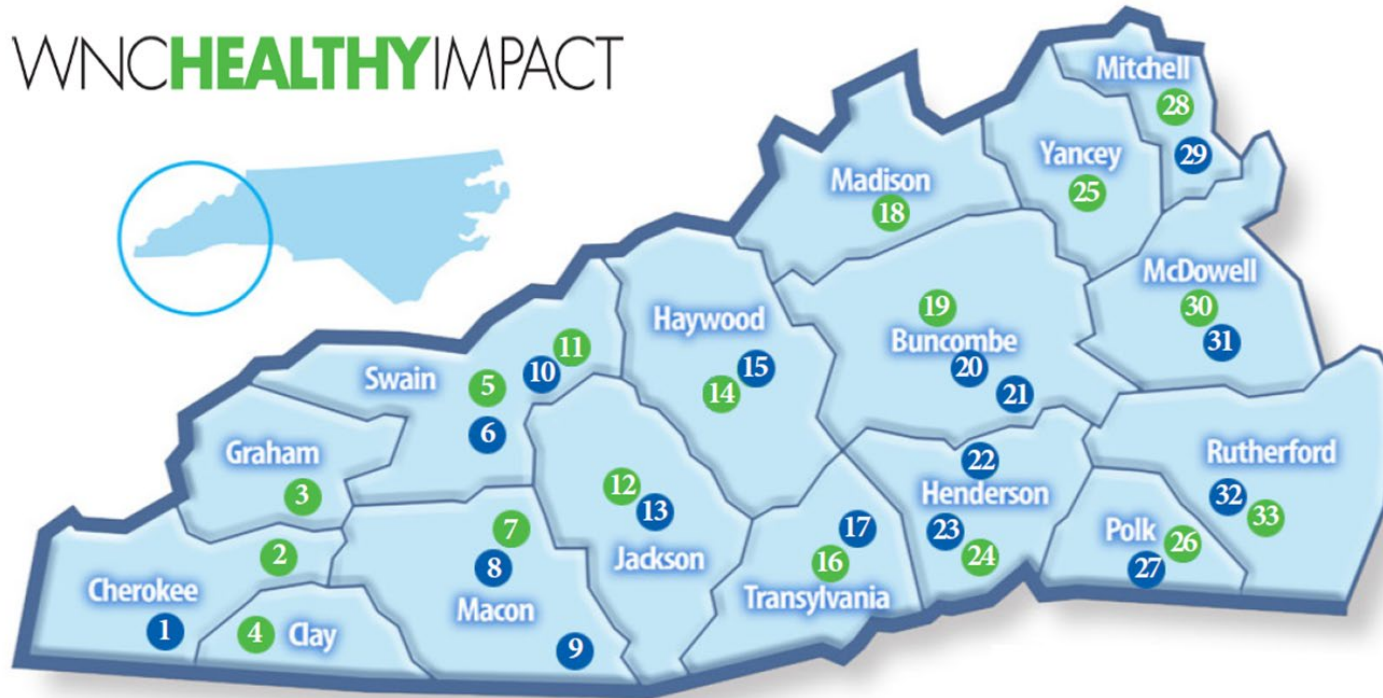
# What is the Community Health Assessment?

## Community Health Assessment 3 Year Cycle



# WNC Healthy Impact

WNC **HEALTHY** IMPACT



- |  |  |   |  |
|--|--|---|--|
| 1 Erlanger Murphy Medical Center       | 10 Cherokee Indian Hospital                        | 17 Transylvania Regional Hospital               | 25 Toe River Health District- Yancey   |
| 2 Cherokee County Health Dept.         | 11 EBCI Public Health and Human Services           | 18 Madison County Health Dept.                  | 26 RPM Health District- Polk           |
| 3 Graham County Dept. of Public Health | 12 Jackson County Dept. of Public Health           | 19 Buncombe County Health and Human Services    | 27 Saint Luke's Hospital               |
| 4 Clay County Health Dept.             | 13 Harris Regional Hospital                        | 20 Mission Hospital                             | 28 Toe River Health District- Mitchell |
| 5 Swain County Health Dept.            | 14 Haywood County Health & Human Services Agency   | 21 CarePartners Health Services                 | 29 Blue Ridge Regional Hospital        |
| 6 Swain Community Hospital             | 15 Haywood Regional Medical Center                 | 22 Park Ridge Health                            | 30 RPM Health District- McDowell       |
| 7 Macon County Public Health Center    | 16 Transylvania County Department of Public Health | 23 Margaret R. Pardee Memorial Hospital         | 31 Mission Hospital McDowell           |
| 8 Angel Medical Center                 |  | 24 Henderson County Department of Public Health | 32 Rutherford Regional Health System   |
| 9 Highlands-Cashiers Hospital          |  |   | 33 RPM Health District- Rutherford     |

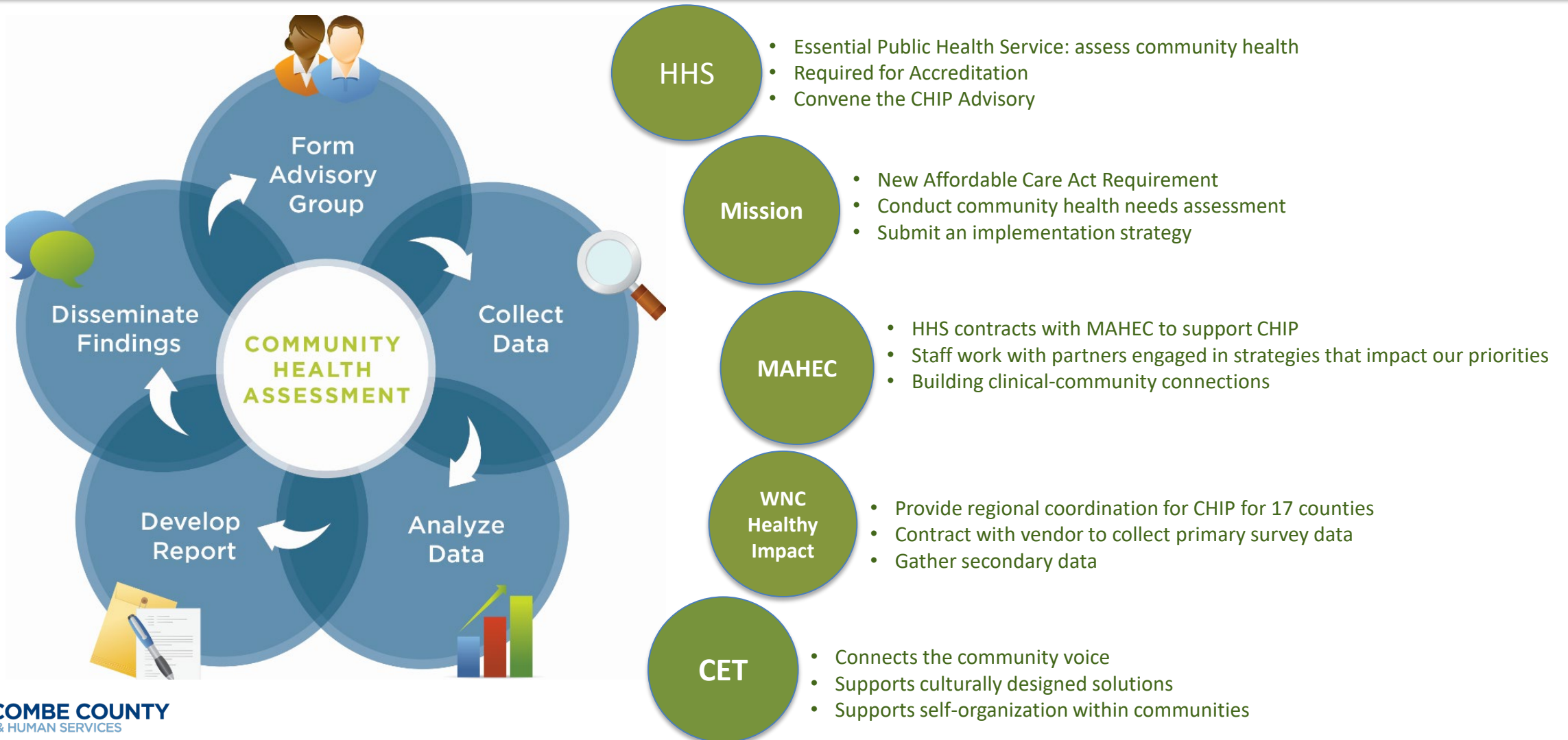
## WNC HEALTH NETWORK

Providers Working Together

This innovative regional effort is supported by financial and in-kind contributions from hospitals, public health agencies, and partners, and is housed and coordinated by **WNC Health Network, Inc.**

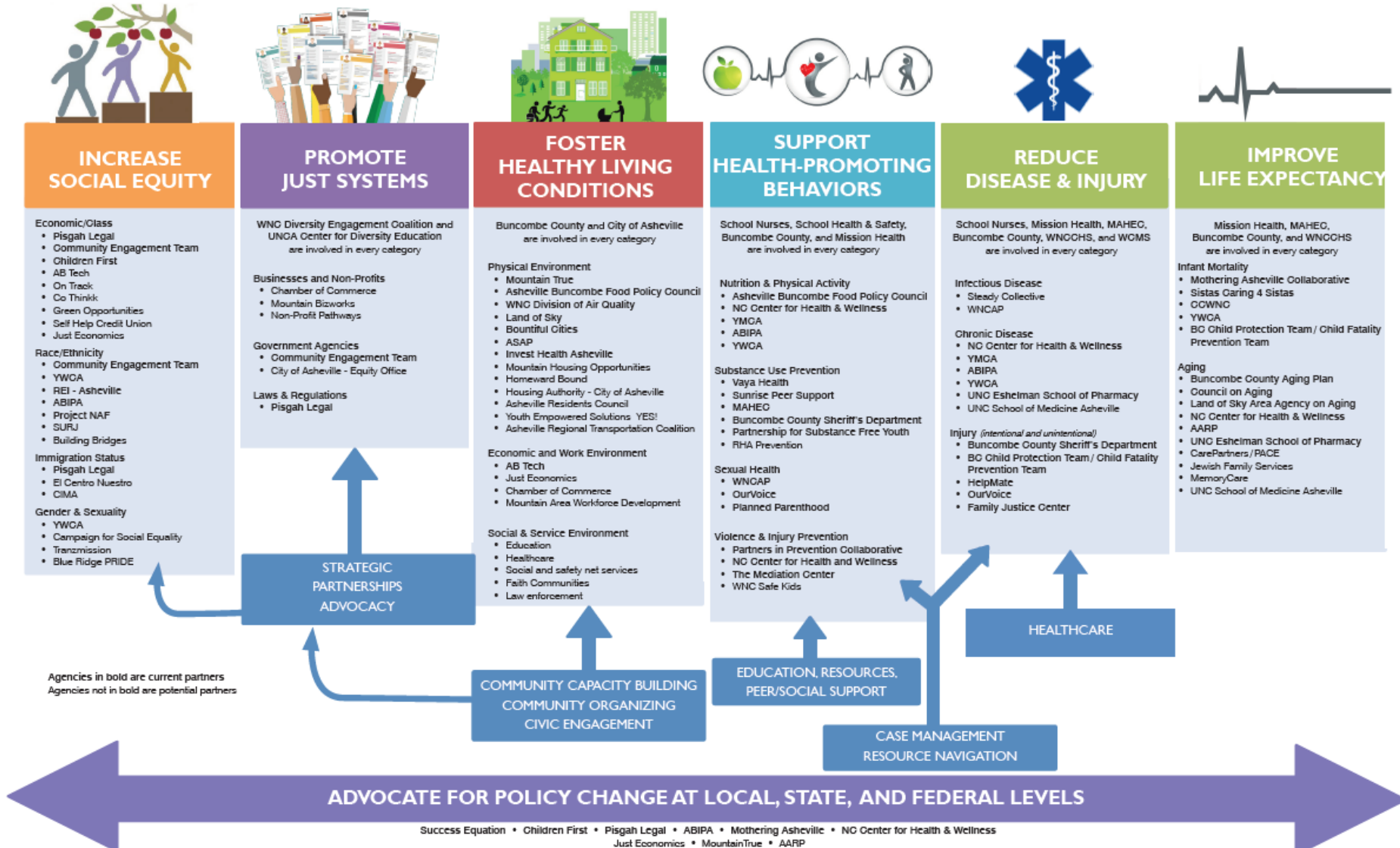
Current efforts to infuse **Results-Based Accountability™** throughout this process are supported by a grant from The Duke Endowment.

# Buncombe CHIP Advisory Council & Leadership Board



# CHIP & Social Determinants of Health

## COMPONENTS OF POPULATION HEALTH



# A Look Back

## 2015 CHA Health Focus Areas

- *Infant Mortality*
- *Obesity & Chronic Disease Prevention*
- *Intimate Partner Violence*
- *Substance Abuse Prevention*

# 2018 CHA Data & Prioritization

## Top 5 from the CHA Prioritization Process:

- Birth Outcomes & IM
  - Asthma/COPD
- Childhood Obesity
- Substance Abuse & Chronic Pain
  - Mental Health

# Birth Outcomes & Infant Mortality

## Current Work & Initiatives

- Mothering Asheville
- NFP & other visiting home services
- MotherLove – YWCA
- Becoming a *Breastfeeding Friendly Community*



# Mental Health

## What Works to Do Better?

- Building Resilient Communities
- Peer-to-Peer Programs
- Access to Behavioral Health Services
- Harm Reduction
- Equity & CLAS Services

# The Future of Health

## Rethinking Health:

- How we *define* health
- How we *deliver* health
- How we *pay* for health

