

Steep Slope and Protected Ridge Overlays in Buncombe County

BC Board of Commissioners
November 20, 2018

Brief History



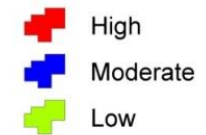
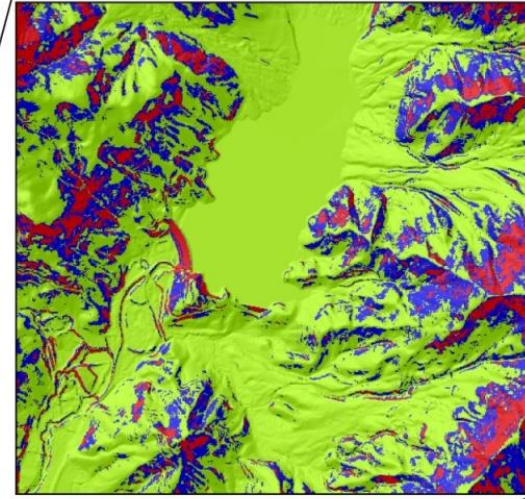
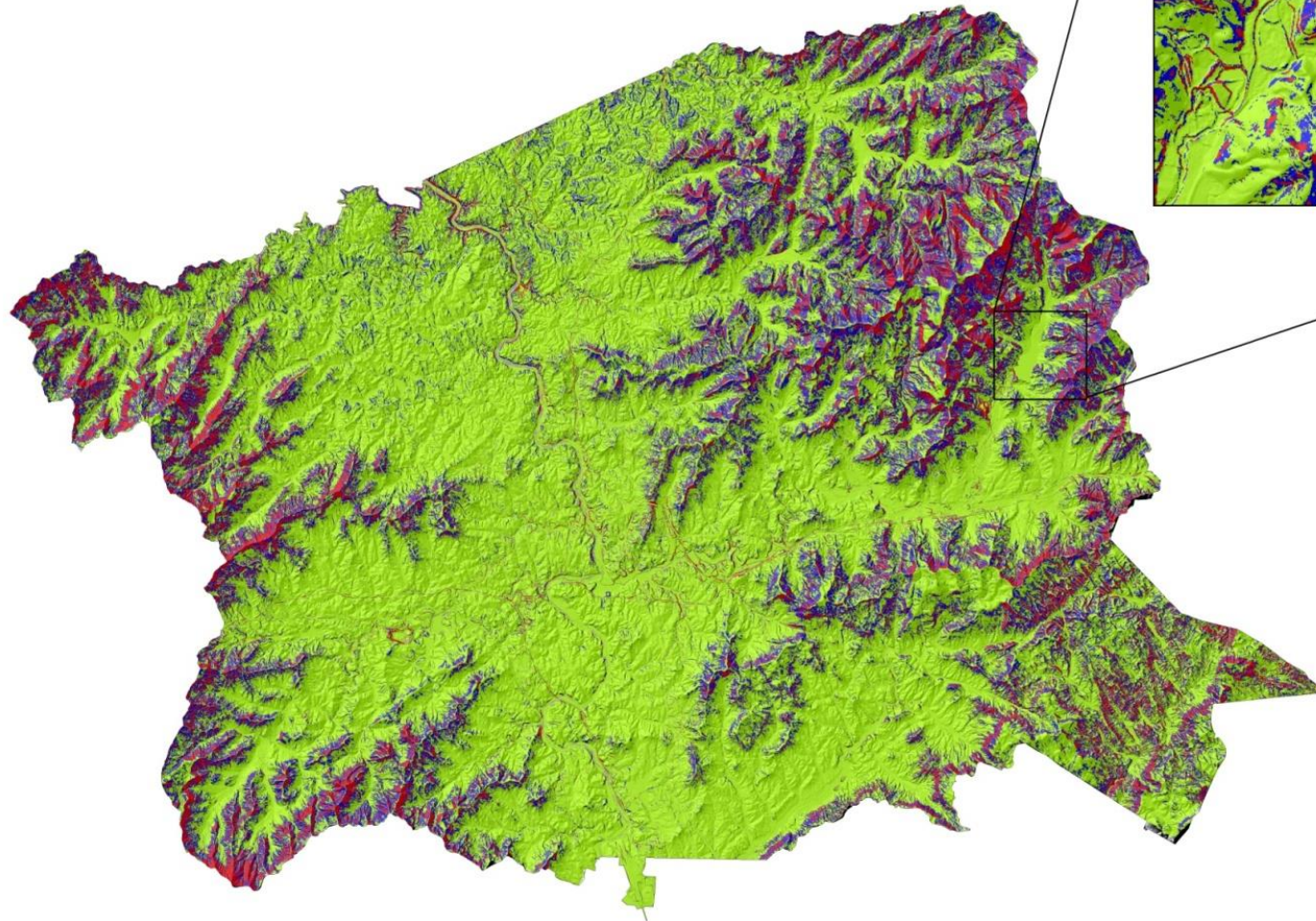
- Mountain Ridge Protection Act of 1983 (NCGS 113A).
- 1998 Buncombe County Land Use Plan
- Protection of steep slopes began with incorporation of safeguards in the subdivision ordinance in 2003-2009.
- Hillside standards of 2006 sought to restrict density, impervious coverage and disturbance.

History Continued



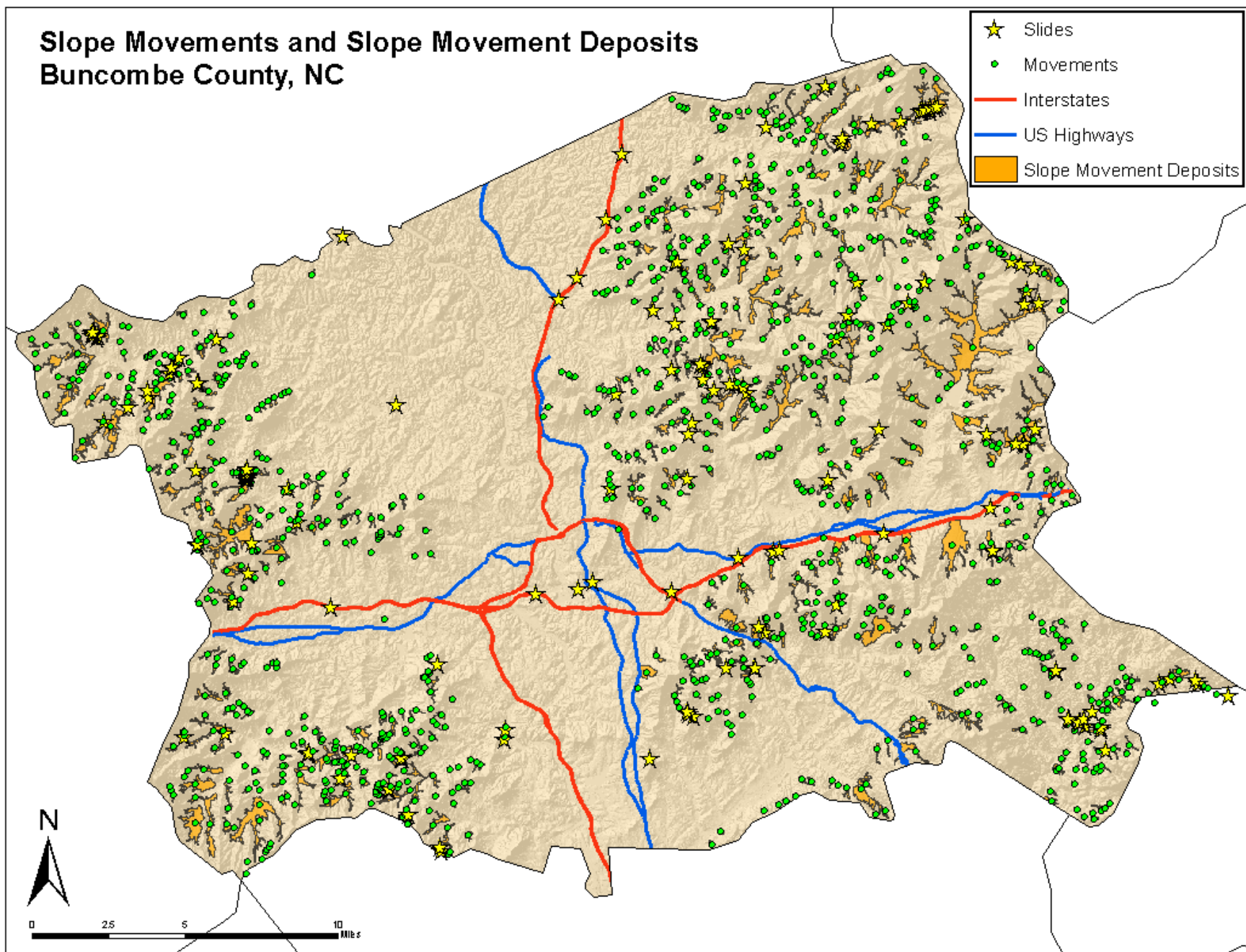
- Buncombe County Steep Slope and Protected Ridge Overlays - 2010
- Product of numerous conversations and collaboration with citizens, design professionals, Land of Sky, NC Geological Survey, builders, realtors, etc.
- Resulted in the protection of steep slope areas (2500 feet and 35%) and protected ridges and ridgelines (3000 feet – 500 foot buffers from identified center line of ridges)

Buncombe County, NC Stability Index



Slope Movements and Slope Movement Deposits Buncombe County, NC

- ★ Slides
- Movements
- Interstates
- US Highways
- Slope Movement Deposits



Landslide Hazard Map

● Movements

★ Slides

Overlay Districts type

Protected Ridge Overlay

Steep Slope/High Elevation Overlay

ZONING OVERLAY MAP

