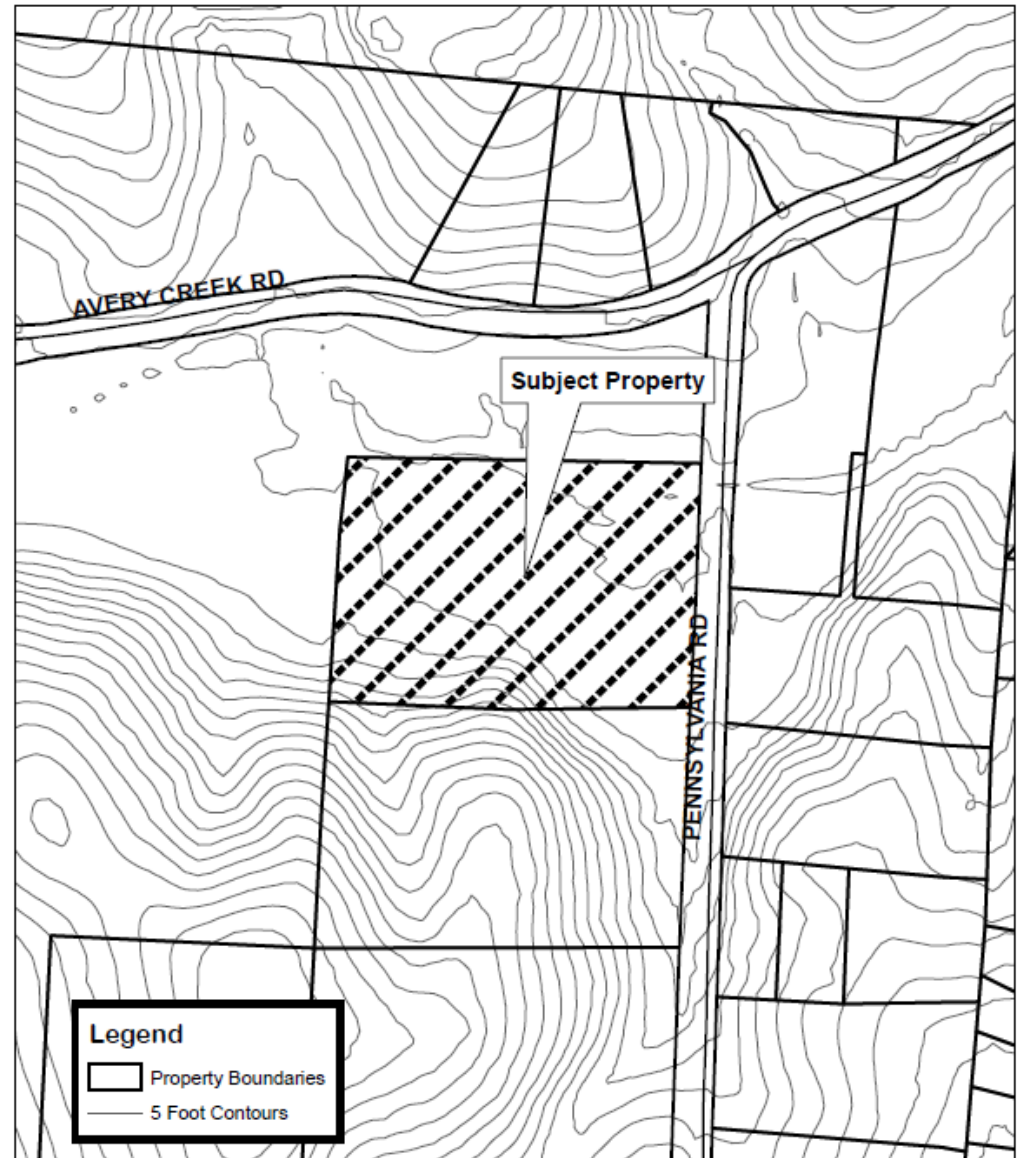


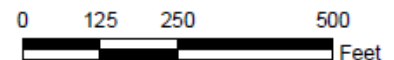
# The Views at Walnut Cove / Stan Robinson

- Request R-3 from R-2
- Staff Recommendation: **Denial**
- Planning Board Recommendation: **Denial**



## The Views at Walnut Cove / Stan Robinson Map Amendment Request

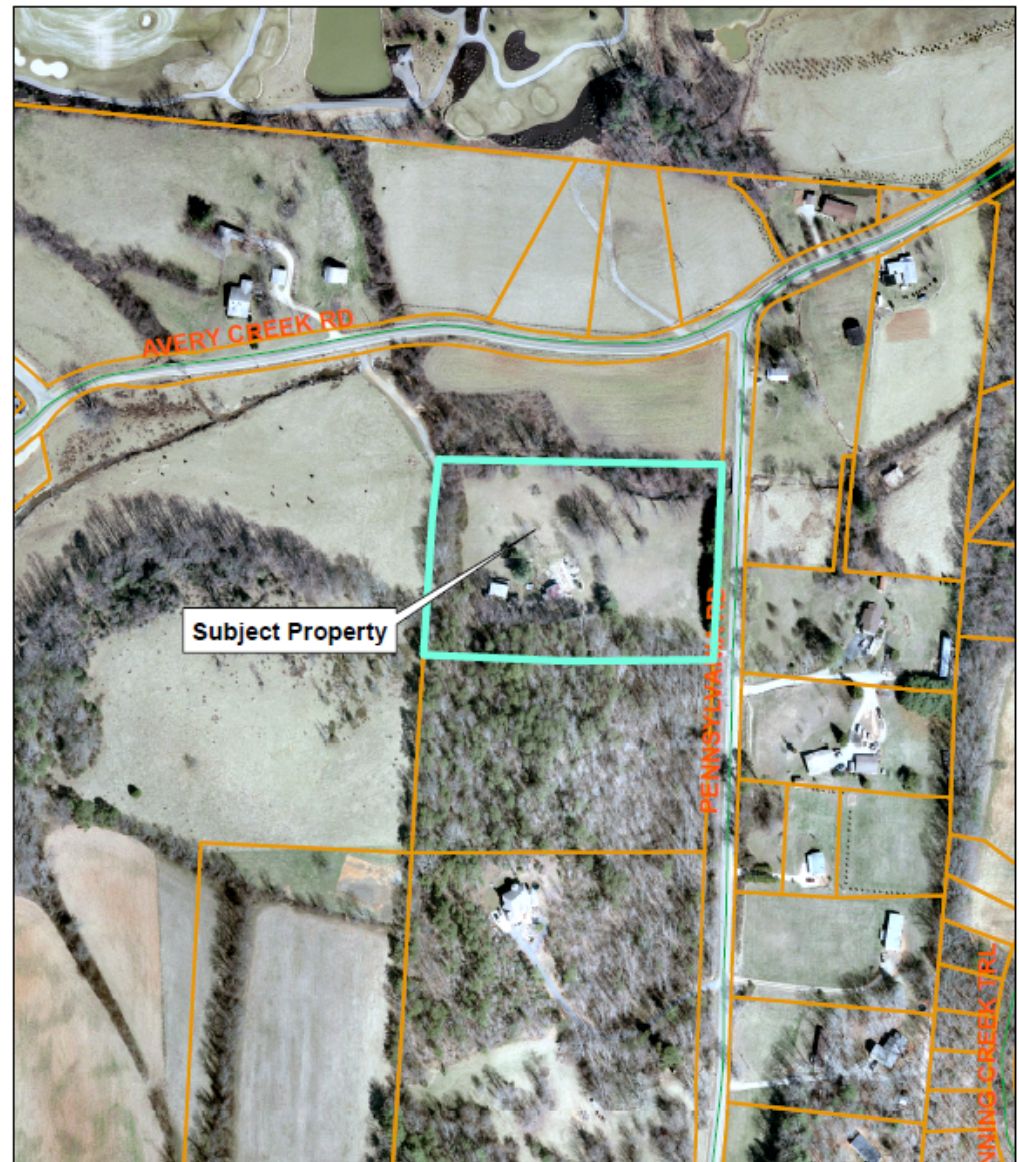
Property Size: 5 acres  
Application Date: February 8, 2010  
Planning Board Meeting Date: March 15, 2010



Created By: Buncombe County Planning  
Date: February 10, 2010

# The Views at Walnut Cove / Stan Robinson

- Request R-3 from R-2
- Staff Recommendation: Denial
- Planning Board Recommendation: Denial




**The Views at Walnut Cove / Stan Robinson**  
**Map Amendment Request**

Property Size: 5 acres  
Application Date: February 8, 2010  
Planning Board Meeting Date: March 15, 2010



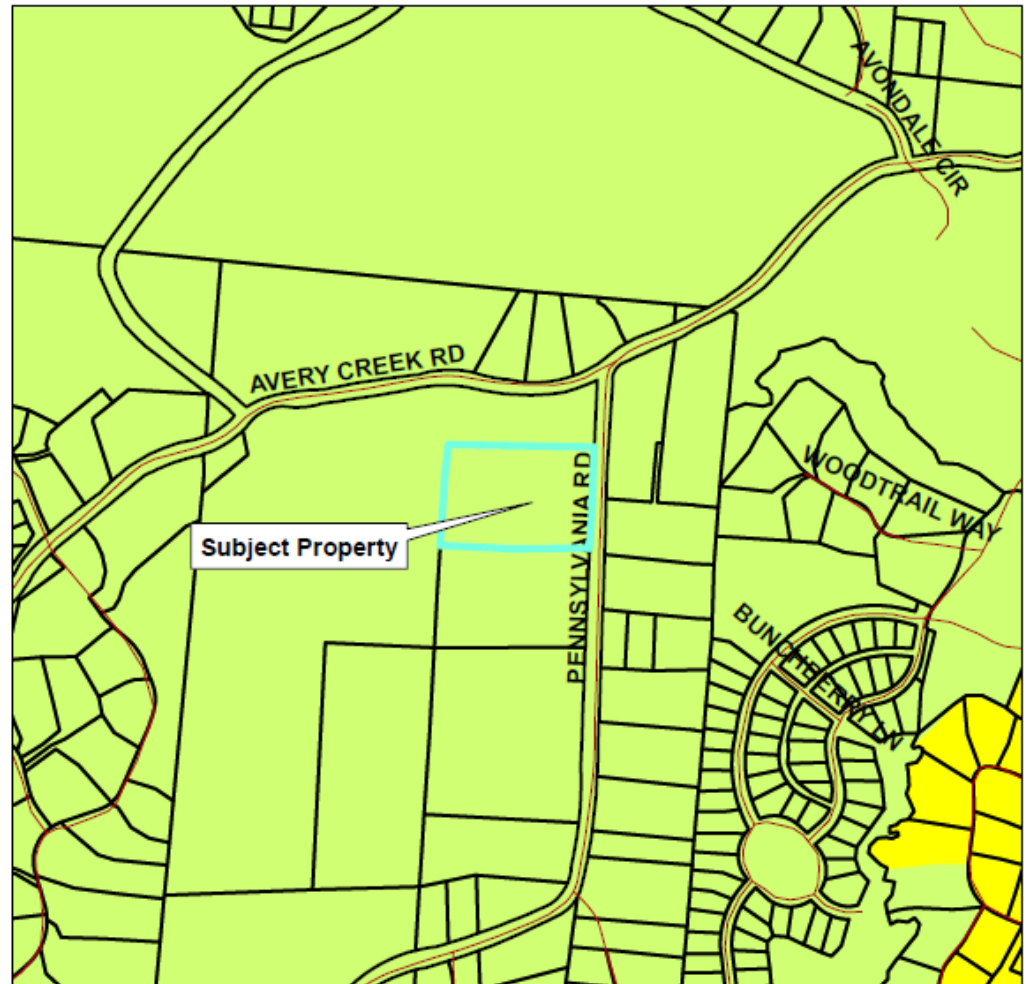
0 125 250 500  
Feet

 Property Boundaries

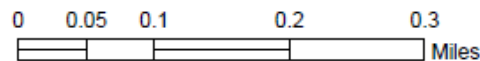
Created By: Buncombe County Planning  
Date: February 10, 2010

# The Views at Walnut Cove / Stan Robinson

- Request R-3 from R-2
- Staff Recommendation: Denial
- Planning Board Recommendation: Denial



**The Views at Walnut Cove / Stan Robinson**  
**Map Amendment Request**



Zoning Districts	
BDM	PS
CS	R-1
EMP	R-2
NS	R-3
OU	R-LD
Zoning Overlays	
	>2500 ft
	>3000 ft

Property Size: 5 Acres  
 Application Date: February 8, 2010  
 Planning Board Meeting Date: March 15, 2010

Created By: Buncombe County Planning  
 Date: February 10, 2010