

# New West Buncombe Intermediate School

## Permanent Underground Power

Option 1 - Using the original route proposed by the Architect, we would be bringing power in from pole #VP86.

Option 2 - However, depending on the Architect's final design we may have to bring power in from pole #VP88.

Progress Energy will make their decision based on final design of Architect.

### Option 2

CONSTRUCT GREASE TRAP (SEE PUE PLANS FOR DETAIL) (REFER TO PUE SHEET PL-1 FOR CONTINUATION)

CONSTRUCT 22 1/2" SANITARY SEWER SERVICE TO SERVICE GREASE TRAP TO BE INSTALLED TO WITHIN 5' OF BUILDING

CONSTRUCT 106 1/2" SANITARY SEWER SERVICE WITH CLEANOUT INSTALLED TO WITHIN 5' OF BUILDING

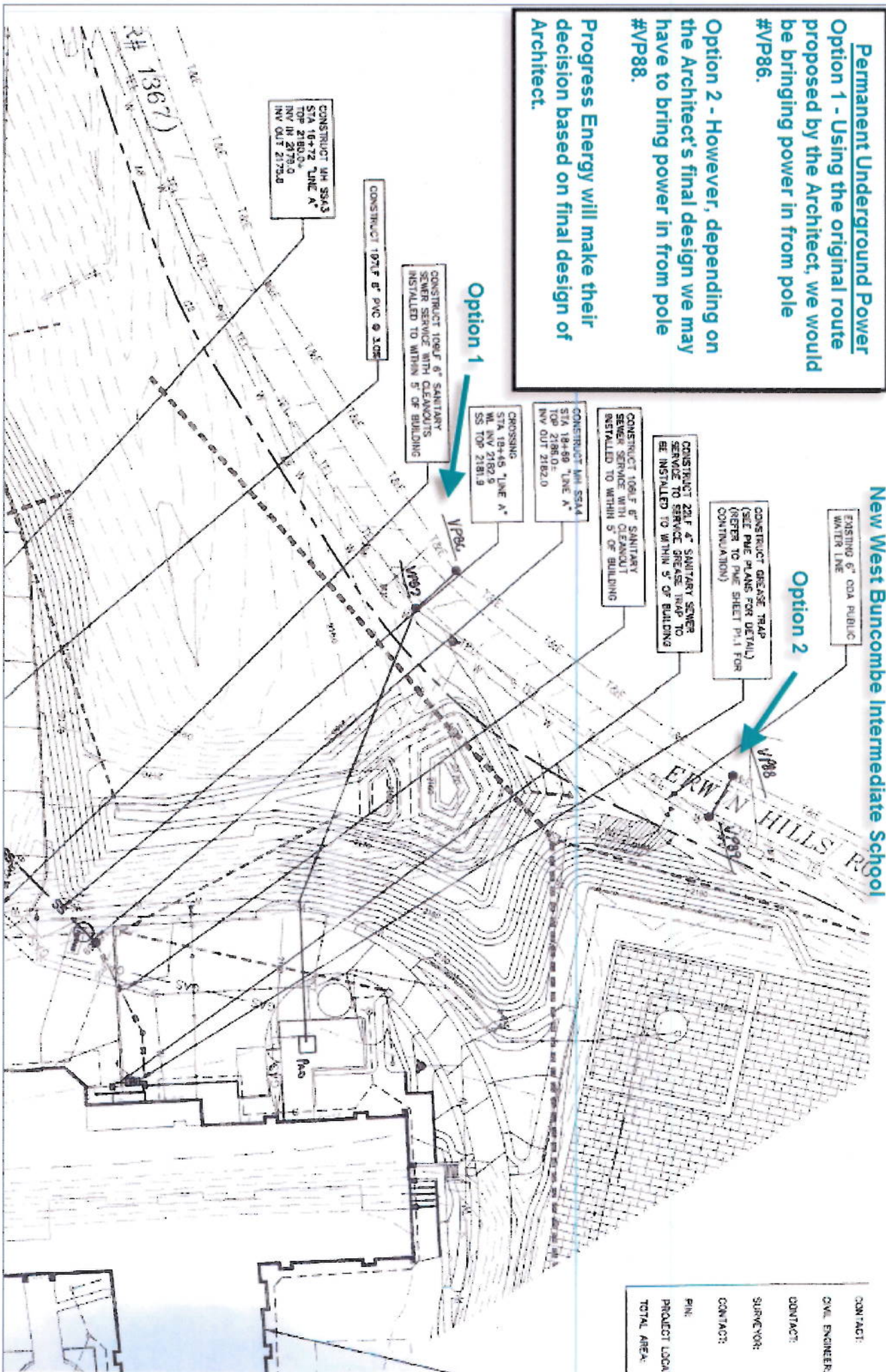
CONSTRUCT MH SS43 STA 18+69 "LINE A" TOP 2182.0' INV OUT 2182.0'

CROSSING STA 18+45 "LINE A" WL INV 2182.5' SS TOP 2181.9'

CONSTRUCT 106 1/2" SANITARY SEWER SERVICE WITH CLEANOUTS INSTALLED TO WITHIN 5' OF BUILDING

CONSTRUCT 12 1/2" PVC @ 3.0%

CONSTRUCT MH SS43 STA 18+72 "LINE A" TOP 2180.0' INV IN 2179.0' INV OUT 2179.0'



CONTACT:	
CIVIL ENGINEER:	
CONTACT:	
SUPERVISOR:	
CONTACT:	
PIV:	
PROJECT UDCA:	
TOTAL AREA:	