

YOUR COUNTY RESOURCE GUIDE

SPRING/SUMMER '07

Buncombe Life



FEATURED SECTIONS: *Governing* *Doing Business* *Living Here*

ADVERTISING SUPPLEMENT TO THE ASHEVILLE CITIZEN-TIMES

Buncombe County Government We Work For You

GOVERNING

- 3Elected Officials
- 4Organizational Chart
- 5Money Matters
- 6Ordinance Guide

DOING BUSINESS

- 7Solid Waste Disposal
- 8Permits & Inspections
- 9Recycling
- 10Burning
- 11Need a Job

CONNECT

- 12Connect With Your County
- 13BCTV 2 Channel Guide

LIVING HERE

- 14Stay Active
- 15Eyesores
- 16-17Health Center
- 18Be Prepared
- 19Library
- 20-22Caring For Our Children & Adults
- 23Sheriff's Office
- 24-27Programs for a Better Life
- 28Frequently Called Numbers



It is a privilege to serve as your Buncombe County Commissioners. We hope that this publication will be helpful to you. We, along with the County staff, are working each and every day to make life better here in Buncombe County.

Nathan Ramsey, Chairman
Carol Peterson, Vice Chair
David Young, Commissioner

David Gantt, Commissioner
Bill Stanley, Commissioner

Buncombe County Board of Commissioners

250-4001 or FAX: 250-6077
buncombecounty.org

Nathan Ramsey, Chairman

BUSINESS - Commissioners Office
60 Court Plaza Suite 206 • Asheville, NC 28801-3565
250-4006
E-MAIL - nathan.ramsey@buncombecounty.org
E-MAIL - natbin@charter.net

Carol Peterson, Vice Chairman

BUSINESS - Commissioners Office
60 Court Plaza Suite 206 • Asheville, NC 28801-3565
250-4005
E-MAIL - carol.peterson@buncombecounty.org
E-MAIL - peterson7@charter.net

David Gantt, Commissioner

BUSINESS - The Law Offices of David Gantt
82 Church Street • Asheville, NC 28801
252-2852
E-MAIL - commissioner@davidgantt.com

Bill Stanley, Commissioner

BUSINESS - Commissioners Office
60 Court Plaza Suite 206 • Asheville, NC 28801-3565
250-4007
E-MAIL - bill.stanley@buncombecounty.org

David Young, Commissioner

BUSINESS - Fugazy Travel
1550 Hendersonville Road • Asheville, NC 28803
274-2555
E-MAIL - davidy@fugazync.com

cover photo by: Gene Greene



County Manager
Wanda Greene



County Administration

Wanda Greene, County Manager

205 College Street, Suite 300, Asheville, NC 28801
250-4100 wanda.greene@buncombecounty.org

Jon Creighton, Assistant County Manager

Planning Director

205 College Street, Suite 300, Asheville, NC 28801
250-4102 jon.creighton@buncombecounty.org

Mandy Stone, Assistant County Manager

Social Services Director

40 Coxe Avenue, Asheville, NC 28801
250-5588 mandy.stone@buncombecounty.org

Kathy Hughes, Clerk to the Board

Public Relations Director

205 College Street, Suite 300, Asheville, NC 28801
250-4105 kathy.hughes@buncombecounty.org

Joe Connolly, County Attorney

205 College Street, Suite 200, Asheville, NC 28801
254-6315 joe.connolly@buncombecounty.org

Donna Clark, Finance Director

44 Valley Street, Asheville, NC 28801
250-4130 donna.clark@buncombecounty.org

Other Elected Officials

US Senator, Elizabeth Dole

401 N. Main Street, Ste. 200, Hendersonville, NC 28792, 828-698-3747

US Senator, Richard Burr

Federal Building, 151 Patton Ave., Asheville, NC 28801, 350-2437

US Representative, Heath Shuler

356 Biltmore Avenue, Suite 400, Asheville, NC 28801, 252-1651

Governor, Mike Easley

20301 Mail Service Center, Raleigh, NC 27699
919-733-4240 1-800-662-7952 governor@ncmail.net

Local Legislative Delegation

Senators

Martin Nesbitt

29 N. Market Street, Asheville, NC 28801, 252-0490 martin@ncleg.net

Tom Apodaca

P O Box 1011, Hendersonville, NC 28793, 696-0500 toma@ncleg.net

Representatives

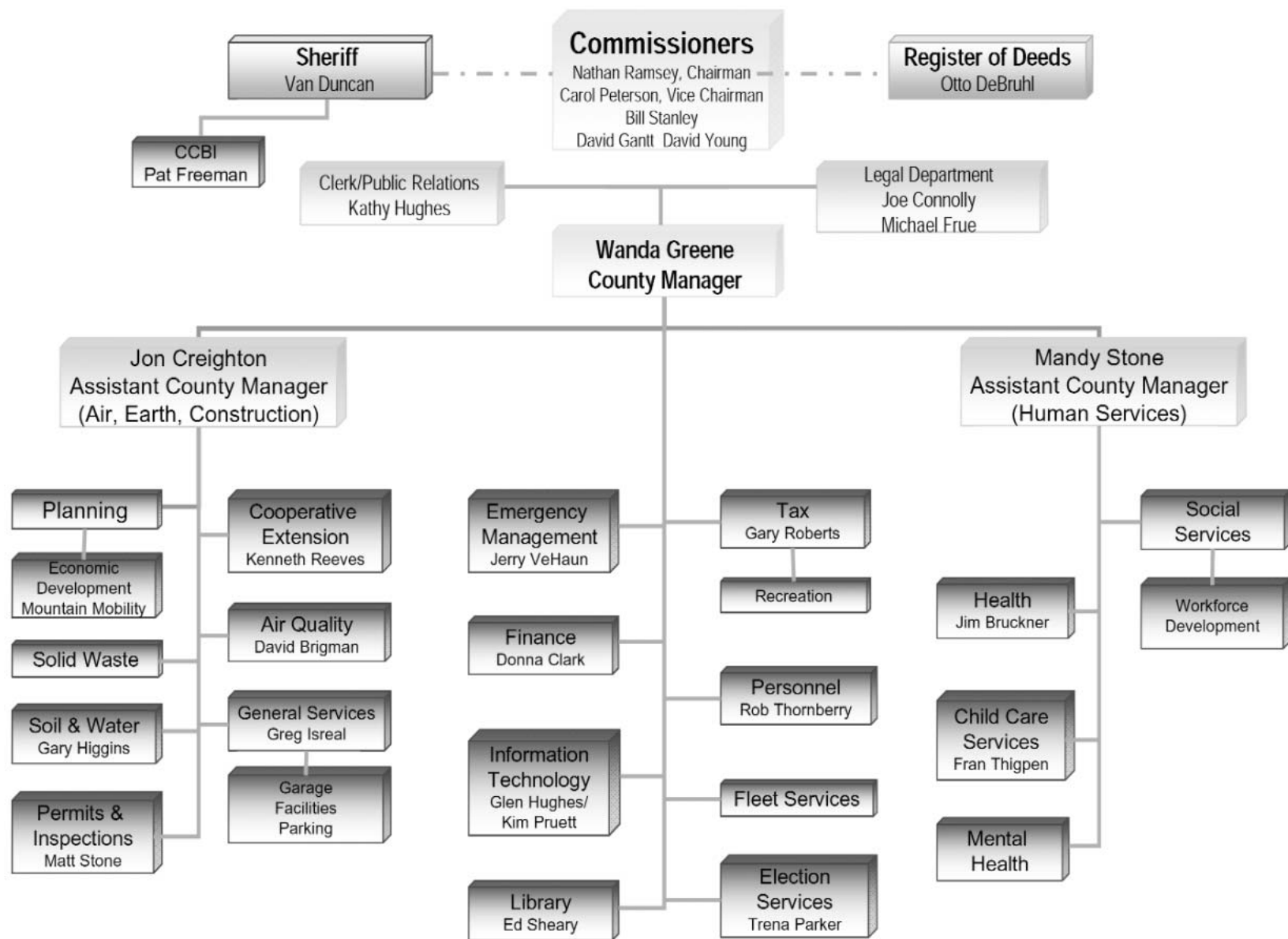
Susan Fisher 36 Clarendon Road, Asheville, NC 28806 258-5355

4suzyfish@charter.net susanf@ncleg.net

Bruce Goforth 137 Stonecrest Drive, Asheville, NC 28803, 298-6237

Charles Thomas P O Box 18561, Asheville, NC 28814, 254-5770 charlest@ncleg.net

Buncombe County Government Organizational Chart



Legend:
 + Elected Position
 * Appointed Board Oversight
 ^ Appointed by and serves at pleasure of the board

Buncombe County At a Glance:

Land Area656.55 square miles
 Date EstablishedDecember 5, 1791
 Total Population217,531
 Median Family Income..... 31,348
 Median Age 40

Unemployment Rate4.6%
 Public School Students28,766
 Registered Voters154,085
 Largest Manufacturing Employer
 Sonopress LLC 725 employees

Largest Non-Manufacturing Employer
 Mission Hospitals5,125 employees
 County Annual Budget.....\$206,408,617
 Tax Collection Rate98.90%

Money Matters

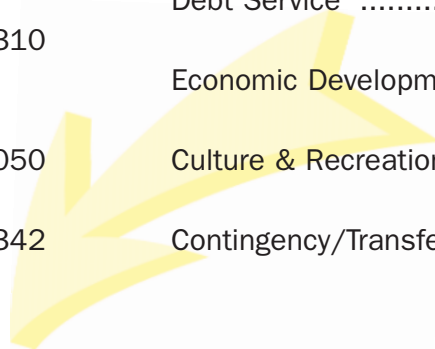
Total FY 2007 County Budget = \$228,932,535

Where Does the Money Come From?

Property Taxes	57% = \$130,470,100
Sales Tax, Excise Stamp Tax, Marriage Licenses etc	16.9% = \$38,680,046
Federal, State Grants & Contracts	15.4% = \$35,338,754
Deed recording fees, ambulance fees, sales of materials	6.6% = \$15,159,933
Auction proceeds, sale of property, fund balance	2.8% = \$6,346,310
Building, well, septic tank permits and fees	8% = \$1,771,050
Investment earnings	5% = 1,166,342

Where Does the Money Go?

Social Services, Health Center, Child Care	35.1% = \$80,432,380
City, County Schools A-B Technical College	26.9% = \$61,556,450
Sheriff, EMS	16.3% = \$37,393,691
Administration, Elections, Register of Deeds, etc	8.5% = \$19,412,476
Debt Service	6.8% = \$15,545,758
Economic Development	2.8% = \$6,477,623
Culture & Recreation	2.7% = \$6,026,526
Contingency/Transfers	9% = \$2,087,631



W H E R E T H E M O N E Y G O E S



Tax Questions?

Taxes due or billing	250-4910	Business listings	250-4930
Listings, changes of address, personal property, exemptions for elderly or disabled	250-4920	Real estate values, appeals of values, present use assessments and real estate exemptions	250-4940
Motor vehicle values	250-4920	Maps to determine acreage and parcel numbers, deed references and property location	250-4970
Foreclosures	250-4919		

Quick Reference - County Ordinances

Your County Commissioners adopt ordinances that regulate conduct that is detrimental to the public health, safety, welfare or peace. You can access all the County ordinances online at buncombecounty.org.

Ordinance Topic	Contact Person	Phone #
Abandoned Vehicles	Roger Presley.....	250-5470
Adult Establishments	Jim Coman	250-4839
Air Pollution Control	Air Quality Control Office.....	250-6777
Ambulance Service	Jerry VeHaun	255-5638
Animal Control.....	Helen Hall	253-1195
Beaverdam Township Zoning.....	Jim Coman	250-4839
Building Inspections/Permits	Matt Stone	250-5366
Cable TV Franchise	Kathy Hughes	250-4105
Community Based Planning	Jim Coman	250-4839
E-911 Service.....	Jerry VeHaun	255-5638
Fair Housing	Jon Creighton.....	250-4835
Farmland Preservation	Debbie Truempy	250-4840
Fire Prevention/Protection	Mack Salley	255-5087
Flood Damage/Prevention	Jerry VeHaun	255-5638
Garbage Collection	Jon Creighton.....	250-5466
Hazardous Waste Collection & Disposal	Denese Ballew	250-5425
Historic Resources	Jim Coman	250-4839
Junkyards/Junk Cars.....	Roger Presley.....	250-5470
Limestone Township Zoning.....	Jim Coman	250-4839
Litter Control	Rick Ramsey.....	250-5471
Noise Control	Sheriff's Office	250-5000
Off-Premise Signs	Jim Coman	250-4839
Rental Housing Rules	Mack Salley	255-5087
Sign Control	Jim Coman	250-4839
Soil Erosion Control	Mike Brookshire	250-4848
Street Addressing	Carolyn Scarberry.....	250-4846
Subdivisions.....	Jim Coman	250-4839
Telecommunication Towers	Jim Coman	250-4839
Watershed Protection.....	Jim Coman	250-4839
Zoning	Jim Coman	250-4839

Roads in the City, Towns and County.

All road paving and maintenance for roads outside one of the towns or cities in Buncombe County is taken care of by the North Carolina Department of Transportation. If you need a road scraped, pot holes patched, or a traffic control sign posted, call NC DOT at 298-0390. If you need a new road name or address or road name sign, please call County Addressing at 250-4845.

Citizens living inside one of our Towns or the City of Asheville can refer to the chart below for all their road needs:

City of Asheville	259-5850
Town of Weaverville	645-0606
Town of Black Mountain	669-9102
Town of Woodfin.....	253-4887
Town of Biltmore Forest	274-0824

County residents (outside a municipality) needing paving or maintenance 298-0390 (NCDOT)
County residents needing new road signs, addressing or naming call 250-4845.

Buncombe County Landfill & Transfer Station

Did You Know? The Landfill receives over 181,000 tons of waste every year.

Transfer Station Recycling & Trash Drop-off

The Transfer Station on Brevard Road is open Monday through Friday, 8 a.m. to 4:30 p.m., and Saturday, 8 a.m. to 3 p.m.

During all open hours, residents can drop off these recyclables at no charge:

- Lead-acid batteries • Newspaper and brown paper bags
- Corrugated cardboard • “Blue Bag” or commingled recyclable containers, including #1 and #2 plastic; aluminum cans; clear, green, and brown glass; and steel cans.

The Transfer Station also accepts reusable corrugated cardboard moving boxes and shipping cartons. Please break down and flatten the boxes for storage. Plus, you can drop off “sharps,” such as needles and lancets, used at home for personal medical care. Place your sharps in a puncture-proof, labeled container. At the front gate, tell the attendant that you have sharps for disposal.

Directions to the Transfer Station:

From I-240, take exit 1B (Brevard Road/Hwy. 191). At the traffic light, take Highway 191 North. Turn left onto Shelburne Road. Turn left onto Hominy Creek Road. The Transfer Station will be on the left.

From I-40, take exit 47 (Brevard Road/Hwy. 191). At the traffic light, take Highway 191 North. After crossing I-240, turn left onto Shelburne Road. Turn left onto Hominy Creek Road. The Transfer Station will be on the left.

Important Phone Numbers for County Residents

Junk Motor Vehicle Officer - Roger Presley	250-5470	Environmental Manager - Denese Ballew	250-5425
Environmental Control Officer - Rick Ramsey	250-5471	Buncombe County Landfill	645-5311
Environmental Control Officer - Jane Cole	250-5472	Buncombe County Transfer Station.....	250-6205

Landfill Offers Drop-off for Residents' Trash, Recyclables, and More

Did You Know? Over 29,000 tons of recyclables are received every year.

You can drop off all of these items for recycling at the Buncombe County Landfill at no charge:

- Lead-acid batteries
- Newspaper and brown paper bags
- Office paper and mail
- Corrugated cardboard
- Commingled recyclable containers, including #1 and #2 plastic (milk jugs, soft drink bottles, laundry detergent jugs); aluminum cans; clear, green, and brown glass bottles and jars; and steel cans
- Yard waste, leaves
- Motor oils
- Tires
- White goods, including stoves, refrigerators, air conditioners, freezers, and all metals
- Empty, triple-rinsed pesticide containers
- Empty propane tanks (20-pound, gas grill type ONLY)
- Cut, bare real Christmas trees (remove all stands, decorations, lights, and tinsel)

Directions to the Buncombe County Landfill:

From I-240 East or West, take Exit 4A to 19/23 North. Travel 1 mile and then take UNC-A exit. At the end of the exit, turn left. Go to traffic light and turn right onto 251 North. Continue on 251 North for 9 miles to Panther Branch Road. Turn right onto Panther Branch Road and travel 1 /10 of a mile to the Buncombe County landfill, which is located on the right. The new landfill is 6 miles north of the old landfill.

You can drop off household trash at the Landfill. There is a fee to dispose of trash.

The Landfill is open to accept trash and recyclables Monday through Friday, 8 a.m. to 4:30 p.m., and Saturday, 8 a.m. to 1 p.m.

Tours of the landfill are available to interested groups, including clubs, civic organizations, scout troops, and classes. For details, call 645-5311.

Permits & Inspections • Is it time for some spring remodeling?

Adding a garage, finishing a basement or building a sunroom?

Before you start you might need a permit!

Permits are NOT required for any work costing \$5,000 or less unless the work involves:

- The addition, repair or replacement of load bearing structures, plumbing, electrical, heating or air conditioning systems
- The addition, replacement, repair or change to a structure within the 100 year flood plain.

This list of contact numbers can guide you through the process:

- | | |
|--|---|
| <ul style="list-style-type: none"> • Permit Center - (828) 250-5360 • Building Department - (828) 250-5367 • Electrical Department - (828) 250-5372 • Mechanical Department - (828) 250-5382 • Plumbing Department - (828) 250-5378 • Erosion Control - (828) 250-4848 • Flood Hazard - (828) 250-4836 • Street Addressing - (828) 250-4845 • Metropolitan Sewerage District – 251-4781 | <ul style="list-style-type: none"> • Avery Creek Sanitary District – 254-1963 • Water Department – City of Asheville – 251-1122 • WNC Air Quality – 255-5710 • NC Dept of Transportation – 298-2741 • NC Environmental Health & Natural Resources – 296-4500 • Locate Underground Utilities – 1-800-632-4949 • Well & Septic Tank Info – 250-6900 • Solid Waste Management Facility (Landfill) 645-5311 |
|--|---|

Make sure to check with these departments if your property is located in one of the following zoned areas:

- Asheville Extra Territorial Jurisdiction-City of Asheville Zoning Department - (828) 259-5850
- Town of Biltmore Forest - Town Administrator - (828) 274-0824
- Town of Weaverville - Zoning Department - (828) 645-7116
- Town of Woodfin - Zoning Administrator - (828) 253-4887
- Town of Black Mountain - Inspection Department – (828) 669-6437



Buncombe County Permits & Inspections Department



TIP:

If you need to talk with an inspector, call the office at 8 a.m. to catch one of them before they head out into the field.

Where Do The Blue Bags Go?

If you recycle with blue bags, your blue bags are picked up and delivered to the MRF or Materials Recovery Facility operated by Curbside Management Inc. in Woodfin. This facility receives, sorts, processes and markets recyclable materials. The materials are sorted by type, and most of the recyclables are baled into giant cubes. These bales are stacked to wait for shipment to a manufacturer. Glass containers go into open top bins for shipment. School groups, businesses, residents and interested citizens are welcome to visit the MRF and see recycling in action. To schedule a tour or get more information about recycling, call 252-2532.



Everyone Can Recycle In These Locations

Recycling Drop Off Center Locations that will take paper, mail (including envelopes), newspaper, cardboard, #1 and 2 plastic containers, aluminum cans and steel cans:

- Behind Asheville Pizza Company- 675 Merrimon Avenue
- Curbside Management Facility- 116 North Woodfin Avenue in Woodfin
- Westgate Shopping Center- near EarthFare



Did You Know?

Americans make up only 5 percent of the world's population but produce 50 percent of the world's trash. Americans toss out 2.5 million plastic bottles every hour.

Americans throw away the equivalent of almost half a million trees every week just by disposing of the Sunday newspaper.

Got Household Hazardous Waste?

Buncombe County Landfill accepts HHW and e-waste every Friday between 9 a.m. and 3 p.m. at a special drop-off area at the Landfill.

Each week, e-waste, which includes computers and related equipment, is accepted from residents at no charge. Businesses are also able to drop off electronics, but will be charged a fee of 30 cents per pound.

HHW is accepted for \$2 per gallon for paint-related material, such as paint thinner, kerosene, gasoline, and paint. Other materials, such as lawn and garden chemicals, are accepted at no charge.

For more information, call 250-5460 or the Landfill at 645-5311.



How to Report Illegal Dumping

If you see someone dumping trash illegally, do not risk your personal safety by approaching them. Instead, contact the Buncombe County Environmental Control Office at **250-5461**. Please try to get the following information and pass it along to the officer:

- Specific location (address or nearby cross roads)
- Time of day
- License plate number on vehicle
- Color, make, model and/or name of business on vehicle

If you want to report an **illegal dumpsite**, call **250-5461** and report the following:

- Specific location of dumpsite
- Directions to dumpsite
- Approximate size of dumpsite
- Type of material visible in dumpsite
- Name and phone number of property owner (if known)

Thinking About Burning Your Brush?

Frequently Asked Questions on Open Burning For more information call 250-6777

What can I burn? “If it didn’t grow on your property, don’t burn it.” That’s a great rule to follow because according to the law “only natural occurring vegetation and brush (yard trimmings, leaves, and brush)” can be burned.

What can’t I burn? It is illegal to burn garbage, household trash, construction materials, treated wood, tires, plastics, cardboard, furniture, paper, shingles, wire, etc.

Where in Buncombe County can I burn? You are allowed to burn anywhere that does not receive public trash pick-up. You are not allowed to burn in the Asheville city limits without a special permit from the City Fire Department. Burning must not cause a public nuisance.

Can I be penalized for burning illegal material? YES. Civil penalties can reach up to \$10,000. But there are other reasons you should not burn illegal material. Burning household trash can result in increased exposure to toxic chemicals and particulate matter.

Can I burn trash in a barrel? NO, burning trash or any other manmade materials, even in a burn barrel is illegal.

Why do State and Local Air Quality Agencies have such strict rules? Fires can easily get out of control and endanger neighboring properties; smoke from a burning trash pile releases many toxic air pollutants which can cause serious health problems such as allergies, headaches, nausea and in some cases cancer.

If you want to burn what grew on your property, here are some requirements:

- Burn only between 8 a.m. and 6 p.m.
- At least 1,000 feet away from any occupied building
- Clean vegetation only – no dirt or stumps
- Must not be a nuisance
- Fire must be attended at all times

TO REPORT ILLEGAL BURNING

Call 260-6077 between 8 a.m. and 5 p.m.



Burning Permit Fees

Residential

Hand Piled - No Charge

Machine Piled - \$100 per acre

Industrial/Commercial

Hand Piled - No Charge

Machine Piled 0 to 1 acre - \$250

1 to 5 acres - \$500

Each additional:

5 acres, or part thereof \$500

Do I need a permit and if so, what kind? You do not need a permit for hand-piled brush, unless it is within 500 feet of a state protected woodland. Then you need a N.C. Division of Forest Resources' permit. For info, call 665-1593.

You need a permit for **machine-piled brush** (brush resulting from land clearing). Call 255-5655 for a permit.

Attention Job Seekers

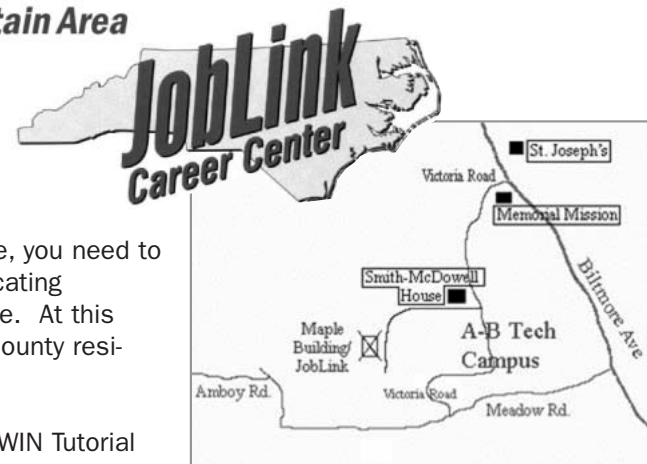
GET YOUR CRC AT THE MOUNTAIN AREA JOBLINK CAREER CENTER

What is the North Carolina Career Readiness Certificate(NCCRC)? It's a *Mountain Area* portable credential you can present to employers to verify your skill levels in the 3 areas most jobs require: Math, Reading and Locating Information. The CRC is based on WorkKeys, a nationally recognized skills assessment tool developed by ACT, Inc. to assist employers in their recruiting efforts, and to determine training needs of current employees.

How do you get a North Carolina Career Readiness Certificate? To earn a certificate, you need to take WorkKeys assessments in Applied Mathematics, Reading for Information and Locating Information. Depending on your score, you may earn a bronze, silver or gold certificate. At this time, the WorkKeys assessments and NCCRC are available at no cost to Buncombe County residents.

How do you prepare for taking the WorkKeys Assessments? Take advantage of the WIN Tutorial which is available at no cost over the Internet. This tutorial was designed to help people determine their current skill levels and then gain skills in areas they need to strengthen.

To learn more about the North Carolina Career Readiness Certificate, call Mountain Area JobLink at 250-4761.



COUNTY JOB OPENINGS are posted every Thursday at buncombecounty.org

Applications are taken ONLINE at buncombecounty.org or at:
Buncombe County Personnel Office
205 College Street, Suite 100 • Asheville, NC 28801
250-4166 • Monday - Friday 8:30 a.m. to 5 p.m.

Looking for
ANSWERS?

check out
buncombecounty.org



Did you Know?

You can access FREE wireless internet service in downtown Asheville! Buncombe County Government has completed work on a WIFI network for the entire business district. WIFI (wireless internet service) is faster than dialup and simple to use. Simply choose Buncombe Free WIFI; open internet explorer and click accept — you are in business.

Connect With Your County...

Here's how you can keep in touch with your government.

Website—buncombecounty.org

E-Mail—subscribe to our award-winning, weekly eZine to get the hottest topics and tips for making your life better—at buncombecounty.org

Services available online:

- Apply for employment
- Reserve a book or check out an audio book
- Pay your taxes
- Find out if your favorite restaurant is clean
- Download building permit applications and instructions
- Buy surplus property
- Watch BCTV shows
- Check the full agenda packet for your County Commissioners' next meeting
- Check the value of your property and view an aerial map

Call our offices—for a complete list of all county phone numbers...see the back page of this publication.



Pick up a map to all Buncombe County offices & Facilities in any county department, or email stacey.keith@buncombecounty.org to have one mailed to you.

Welcome to Buncombe County

New to Our Area?

If you've just moved to the area, there are a few things you'll need to attend to...

Auto Registration

Auto license tags must be purchased within 30 days of relocating to the state. Just bring your car title, proof of insurance and odometer reading to one of the following license tag agencies:

- Innsbruck Mall, 85 Tunnel Road, phone: 828-252-8526
- Asheville West Plaza, 153 Smoky Park Hwy, phone: 828-667-2104

Helpful Hints: The busiest days at the tag agency offices are typically Mondays, Fridays and the 15th and 30th of the month. Also, cars must be inspected within 10 days of the date of registration.

Driver's License

New residents must apply for a NC driver's

license within 30 days of relocating to the state. Vision and written tests are required. You can also register to vote at the DMV office.

600 Tunnel Road (US 70 East)
828-298-4544 or
1624 Patton Avenue 828-251-6065

Utilities

- Gas - Public Service Company of North Carolina (PSNC) 877-776-2427
- Electricity - Progress Energy 1-800-452-2777
- Telephone - BellSouth 780-2355 (Residence), 780-2800 (Business)
- Water - Asheville Department of Water Resources 828-251-1122

Voter Registration

You must register 30 days prior to the election in which you wish to vote. You may register to vote in Asheville and Buncombe County immediately after establishing residency.

Registration may be done by mail or in person at the Board of Elections office, Pack

Memorial Library or at several other locations. Call the Board of Elections for the nearest registration site. 250-4200. (Or, if you also need to get a NC driver's license, you may register to vote at the DMV office.)

Public School Registration

Parents/Guardians need the following documents to register their children in local public schools:

- Birth certificate & Immunization records;
- Medical forms from the Health Department or personal physician;
- Previous report card if transferring from another school

Your residential location will determine in which school district your child will be enrolled:

- Asheville City Schools: 828-255-5064
- Buncombe County Schools: 828-251-6600



Channel Guide

• If you have Charter Cable, tune in to Channel 2 often to keep up with what's happening in your County.

• If you don't have Charter Cable, tune in to Commissioners' meetings and other originally produced programming on our website at buncombecounty.org. Just look for the camera under Helpful Links.

Connect

BUNCOMBE COUNTY COMMISSION MEETINGS

- *See your Commissioners in action*
Tuesday & Thursday at 8 p.m.
Wednesday at 3 p.m.
Saturday & Sunday at 9 a.m.

BLACK MOUNTAIN TOWN ALDERMAN MEETINGS

- *See your Alderman in action.*
Thursday at 8 p.m. (following their meeting)
Saturday & Sunday at 9 a.m. (following their meeting)

BUNCOMBE LIFE

- *a monthly informational/news show focusing on issues facing Buncombe citizens as well as "how to" segments to help citizens learn more about their County government and the services that it provides.*
Monday, Wednesday & Friday at 9 p.m.
Tuesday & Thursday at 7:30 p.m.
Wednesday at 2:30 p.m.

COUNTY FOCUS — Award Winning

- *News show featuring Buncombe County hot issues*
Every morning at 7:30 a.m.
Every evening at 7:30 p.m.

PARKS ALIVE — Award Winning

- *Award winning show featuring programs and events from Buncombe County and Town of Black Mountain Parks and Recreation Departments.*
Everyday at 7 a.m. and 7 p.m.

GET FIT WITH PILATES • *Pilates for everyone*
Tuesday & Thursday at 11 a.m.

ABLE — ALL BODIES LIKE EXERCISE

- *Exercise geared for seniors*
Monday, Wednesday & Friday at 10 a.m.

BUNCOMBE COUNTY WEEKLY • *Weekly show featuring County events for the upcoming week.*
Everyday at 8:30 a.m. and 6:30 p.m.

ARMY NEWSWATCH

- *News show produced by the US Army.*
Tuesday at 10 a.m., Saturday at 4 p.m. and
Sunday at 10 p.m.

AIR FORCE TODAY

- *News show produced by the US Air Force.*
Tuesday at 10:30 a.m.; Saturday at 4:30 p.m. and
Sunday at 10:30 p.m.

Plus loads of Library programs; Cooperative Extension programs and other helpful information for life.

You can find the BCTV schedule at buncombecounty.org



**I Want My
BCTV!**
on Charter Channel 2

buncombecounty.org/bctv

Stay Active Come Out and Play

Enjoy Your County Parks This Summer

Lake Julian Recreation Area is waiting for you..

Lake Julian outdoor picnic shelters are available for any event — there are shelters to accommodate small families and large gatherings. Reservations can be made by calling 684-0376 today. While you are at Lake Julian, you can fish from the shore or rent a fishing boat. They have paddle boats too.

Fishing Boats —	four hour minimum \$7.50
All day	\$15
Fishing Permit —	\$3 per day or \$19 per year
Paddle Boats —	\$5 per hour
Launch Your Own Boat —	\$4 for fishing boat, canoes and sailboats
	\$40 per year
Pontoon Boat for Handicapped —	no charge, reserve today!
(people w/disabilities)	



It's Swim Time!

The County offers five outdoor pools: Cane Creek, Erwin, Hominy Valley, North Buncombe and Owen Pools. Pools open in June and are heated.

If you want to swim indoors, come out to the Zeugner Center Indoor Pool in Skyland. This pool is also available to rent for parties or activities. Call 684-5072 for more details.

Get Out and Enjoy a Picnic at one of the County's 7 river parks:

Bent Creek River Park, Corcoran Paige River Park; Glen Bridge River Park, Hominy Creek River Park; Jean Webb River Park;

Ledges Whitewater River Park, Walnut River Park. This river park is located in North Buncombe. This facility offers picnic tables, grills, benches for relaxing in the sun and fishing. The park hours are 8am-6pm daily. Directions from downtown Asheville: 19/23 North and to the Hill Street Exit; travel .1 mile and turn right onto Riverside Drive. Travel 13.3 miles and the park is on the left. Please remember dogs must be on a leash and possession of weapons and alcoholic beverages are prohibited.



For more information contact County Parks at:

Administration250-4260
Lake Julian 684-0376
Outdoor Pools..... 684-5072
River Parks250-4260
Zeugner Center..... 684-5072

Mailing Address:

49 Mt. Carmel Road
Asheville, NC 28806

SISTERS OF MERCY URGENT CARE

Now Open
Longer to
Bring You
Help In a
Hurry



8 am – 8 pm Weekdays – all locations
11am – 5 pm Sat & Sun

Urgent Care North
155 Weaver Boulevard
Weaverville

Urgent Care West
Leicester Hwy & Patton Ave
Asheville

Urgent Care South
1812 Hendersonville Rd
Asheville

129311-127

www.urgentcares.org

828-210-2121

Got an Eyesore in your Neighborhood?

Junk vehicles can be unsightly and dangerous! A junk vehicle is “a vehicle that does not display a NC license plate, can not be self-propelled in the manner in which it was originally intended OR has been wrecked and dismantled.” Over 3,000 vehicles have been recycled in the last five years.

Report junk vehicles today by calling 250-5470!



Got an Old Mobile Home that NEEDS to Go?



Buncombe County currently sponsors a program to remove abandoned, dilapidated or unused mobile homes. The costs to remove the mobile home(s) are covered by the County. **It is free to the property owner.**

The goal is to help citizens of the county remove their unwanted mobile homes in a responsible and non-polluting manner. It is also the intent of the program to eliminate blighted areas.

If you own or are aware of mobile homes in your area that appear to be abandoned, dilapidated or unwanted, please **contact the Buncombe County Planning Department directly at 250-4830.**

Tired of Looking At Trash On the Road Sides?

Gather your favorite group of people and join in the 2007 “Pick It Up” Campaign

Collect 3 bags of trash and get a free Pick It Up! T-shirt. The County will provide the bags and safety vests. Call 250-5460 for more information and to sign up!



BUNCOMBE COUNTY 4 CORNER CLEANUP
Buncombe County Environmental Control

Buncombe County Health Center is Here to Help.

Did You Know?

“ This year, more than 100,000 U.S. women under 65 will have a stroke... and they won't be overweight, smokers who have high blood pressure or high cholesterol. ”

Source: ©2006 American Heart Association, Inc.



Wisewoman Program

The WISEWOMAN Program helps women improve their health and reduce their chances of heart disease, including stroke. Women who participate in WISEWOMAN through the Buncombe County Health Center receive breast and cervical exams, pap smears, mammograms, blood pressure and cholesterol screenings, health counseling and education. This program assists women between the ages of 40 to 64 who have little or no insurance and meet financial requirements.

For more information or to make an appointment call 250-6119

Immunization and Testing Services at the Health Center

The Health Center Provides the following services:

- Immunization Program
 - Childhood Vaccination Program (no charge)
 - Adult Vaccination Program (Medicaid, Medicare, Self pay)
 - Foreign Travel Vaccination Program (Self pay)
- TB Program
 - Skin testing (Self pay)
 - Chest x-ray clinic (no charge for TB clients)
 - Physician review and recommendation (no charge)
 - Treatment of disease and infection (no charge)
 - Surveillance and investigation (no charge)

Please call the Immunization Clinic at 250-5096 for questions on services.



How Clean is Your Favorite Restaurant?

Wanna check and see? Here's how...

- Log on to buncombecounty.org
- Click on e-gov
- Select Digital Health Department
- Register to be notified of your favorite restaurant's grade or
- Select your restaurant by name from the left

You can read their last three restaurant inspections online.

You can also check on tattoo parlors, food stands, day care centers, and hotels and motels in our county.



Want to Dine Smoke Free?

The Health Center and Project ASSIST have launched a smoke free dining campaign to make it easy for families to know where they can dine out and avoid second-hand smoke. Look for this traffic light on the front door or window of restaurants. When you see the traffic light you know you are entering a restaurant that is completely smoke free.

Buncombe County Health Center Dental Health Services is accepting new patients.

Any child who is covered by Medicaid or Health Choice is welcome, as well as Buncombe County adults with Medicaid.



Services provided include a full range of preventive and restorative care including

- dental cleanings, fillings,
- root canals, and
- oral surgery including wisdom tooth removal.

Emergency care is also available. Assistance is available for non-English speaking clients.

250-5011 Monday – Friday
7:45 am – 4:00 pm
(Please call early for emergency services)



Did You Know?

“County Environmental Health investigated 264 food establishment complaints in 2006.”

Source: Buncombe County Health Center



Ask Cynthia

Cynthia Earle, Doctor of Audiology

Q Why should you buy hearing aids from an Audiologist?

A Many consumers are still uncertain where to find professional help for their hearing problems. Recent reports showing low consumer satisfaction are further evidence that selling has often taken precedence over care and service in the dispensing and fitting of hearing aids. That's why you should purchase your hearing aids from an audiologist. Clinical audiologists are the hearing care professionals. They are required to hold at least a master's degree in audiology, and a few, like myself, hold a clinical doctorate degree in audiology. We are trained to understand your hearing health needs. Hearing instruments are only a part of the total hearing rehabilitation process.

To schedule your hearing evaluation, call Dr. Cynthia Earle.

widex Inteo
Integrated Hearing Science



ASHEVILLE
AUDIOLOGY
SERVICES

(828) 277-5677

Forest Center North • 900 Hendersonville Rd.
Suite 105 • Asheville, NC

Let's Be Prepared

Get Prepared For a Crisis

A crisis or disaster can occur in many forms – flood, tornado, pandemic flu, electrical outage, and countless other ways. The Buncombe County Health Center is working with area businesses, hospitals, transportation authorities, and many other agencies to be prepared when a crisis occurs. The Health Center asks that citizens make plans for themselves. You can find information at buncombecounty.org that will help you prepare. Here are some suggested items to keep on hand at all times:

Examples of Food:

Ready to eat canned meats, fish, fruits, vegetables, beans, soups
Protein or fruit bars
Dry cereal or granola
Peanut butter or nuts
Dried Fruit
Crackers
Canned juices
Bottled Water
Baby Food and/or Pet Food



Examples of Medical / Emergency Supplies:

Prescribed medical supplies such as glucose, blood pressure equipment
Alcohol-based hand wash
Medicines for fever such as acetaminophen or ibuprofen
Thermometer
Anti-diarrheal medication
Flashlight
Batteries
Portable Radio
Manual Can opener
Garbage bags

Mosquito Season is Here - Get Prepared to PREVENT West Nile Virus – MAKE SURE you deal with those pesky and DANGEROUS Mosquitoes:

- **Wear long sleeve shirts and long pants**

especially during the morning and evening hours when mosquitoes are most active.

Use screened windows and doors

- **Clean water from bird baths and pet bowls at least once a week**

Remove or empty dishes under potted plants

- **Cover unused pools**

Clean clogged rain gutters

- **Avoid outdoor activity when mosquitoes are most active—dusk and dawn**

Stock ponds and ditches with fish that eat mosquito larva – ditch minnows are the best and can be found at Useful Plants Nursery in Black Mountain 669-1759.

- **Drill holes in tire swings to let the water out and keep children's wading pools empty and on their sides when they aren't being used.**

Mosquitoes can contract West Nile virus from dead birds—never handle dead birds with your bare hands. Call the Health Center at 250-5016 to make a report.

Source: Buncombe County Health Center & Center for Disease Control



Your Library Provides 24/7 Access



Checkout and Download Popular and Award Winning Audio books, e-books and Classical Music from the Comfort of Your Home. Now the Library Never Closes.

Buncombe County Library's new online service is giving library patrons access to popular eBooks, audio books and classical music directly from their own computers. With the new digital library, citizens can browse, checkout, and download digital audio books and e-books anytime of day from anywhere they have internet access.

Getting started is easy.

- Go to buncombecounty.org and choose "library" from the list of departments. Use the "electronic resources" link on the left side of the library page. A valid Buncombe County library card and PIN are required to checkout and download books from the website.
- Install the free software.
- Browse the collection and download.
- Items can be transferred to a portable device, such as an MP3 player or used directly from a home computer.
- You can burn audio books to CDs and listen to them in the car or on any standard CD player. When the 14 day lending period is up digital books automatically expire so there are never any returns or late fees.

Buncombe County Libraries

Pack Memorial Library (Main)

67 Haywood Street250-4700
 Renewal Line251-4998
 TDD for hearing impaired250-4718

Black Mountain Library – 105 Dougherty Road669-2652

East Asheville Library – 902 Tunnel Road.....298-1889

Enka-Candler Library – 1404 Sandhill Road.....667-8153

Fairview Library – 1 Taylor Road.....628-5837

Leicester Library – 1561 Alexander Road.....683-8867

North Asheville Library – 1030 Merrimon Avenue.....251-4991

South Asheville Library (Oakley)

749 Fairview Road.....274-1007

South Buncombe Library (Skyland)

260 Overlook Road684-1827

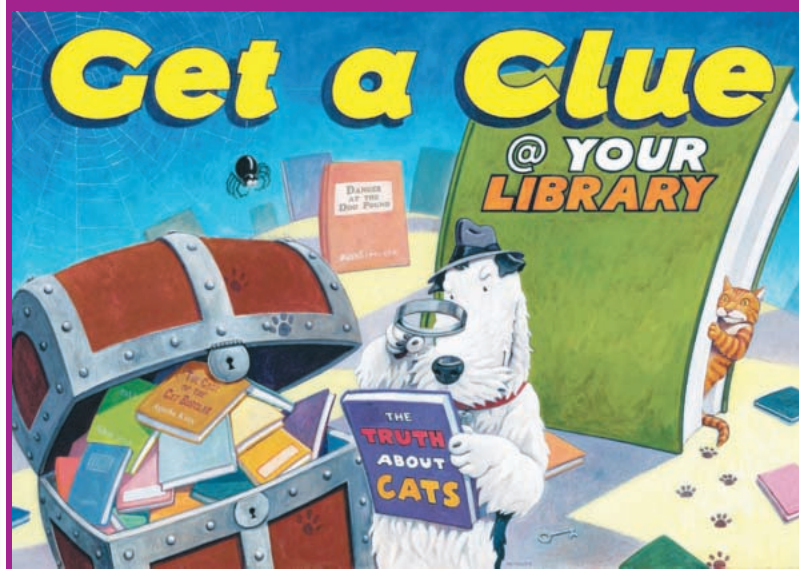
Swannanoa Library – 101 West Charleston686-5516

Weaverville Library – 41 North Main Street645-3592

West Asheville Library – 942 Haywood Road251-4990

Law Library – 10th floor Courthouse250-4734

Summer Reading Program Begins



Buncombe County Social Services - Here to Help!

Did You Know?

“All citizens are mandated reporters if they have reason to believe that a child is being abused or neglected.”

How do I make a Complaint?

1. **Call Children Services Intake** at 250-5822 during business hours and 252-4357 or 211 after hours.
2. An intake worker will take your report and ask questions of you from the structured intake assessment.
3. If the report meets the legal definition of abuse or neglect, DSS will decide whether to conduct an assessment.
4. **If I call, will my name be revealed?** No. The reporter's name is kept confidential and reports can be made anonymously. State law will not allow us to reveal the name of the reporter.

Got a Question, call the Citizen
Response Center @ 250-5500





**HELP PREVENT
CHILD ABUSE**

**WHEN IN DOUBT...
REPORT!**

**To Make a Report Contact
The Department of Social Services**

Daytime: 250-5900
After Hours: 252-HELP(4357)
The reporter's information is kept confidential.

Contact Information for Child Protective Services

Child Protective Services Hot Line: 250-5822
After hours reports of abuse or neglect: 252-4357 or 211

Reports that meet the statutory definition of abuse, neglect and dependency of children are assessed by DSS Social Workers. Once a decision is reached in the assessment phase, protective services are arranged as appropriate to ensure children's safety in their home.

On average, the Department of Social Services receives 233 reports of alleged child abuse, neglect and dependency per month. Social Workers work with an average of 317 families per month to decrease risk and keep children safely in their homes.

Are You Looking For Child Care?

Buncombe County Child Care Services can help you answer questions on choosing quality child care. We can help you locate a provider that will fit your needs and income level, and help you with financial assistance.

Simply call **Buncombe County Child Care Services** at 250-6700.

Child Care Services is located at 59 Woodfin Place in Asheville.

Hours are: 8 a.m. to 5 p.m. Monday—Friday and
8 a.m. to 6 p.m. on Tuesday and Thursday.



Does your child have identification?

The Sheriff's CHILD ID Program can help you be ready if your child were missing.
Call 250-4547 to find out more...



Does your child need health care coverage?

Call Health Choice
today...250-5709



We help you create...

Your Dream Home



Our Design Consultants

Offer:

Space Planning
Lighting
Color Coordination
Selection of cabinetry,
tile, kitchen and
bath fixtures
Fabric Selection
Custom Window
Treatments
Furnishings and
accessories for any décor

828.926.1722

*Exceptional Customer
Service and FREE local
delivery.*

3232 Dellwood Road,
Waynesville NC 28786
www.highcountry.com

Adult Protective Services

If I think an Adult is being abused or neglected, what can I do?

**Call Department of Social Services
Adult Protective Services.**

Reports that meet the statutory definition of abuse, neglect and exploitation of disabled adults in need of protection are evaluated by DSS Social Workers. The needs of the person are assessed and if services are needed, the social worker will arrange them as appropriate to remedy the situation.

On average DSS accepts 32 reports of abuse, neglect and exploitation per month.

How do I make a Complaint?

1. Call Adult Services Intake at (828) 250-5800 during business hours and (828) 252-4357 or 211 after hours.
2. An intake worker will take your report and ask questions regarding the situation
3. If I call, will my name be revealed? No. The reporter's name is kept confidential and reports can be made anonymously. State law will not allow us to reveal the name of the reporter.

For more information, please call Adult Services Intake at 250-5800.



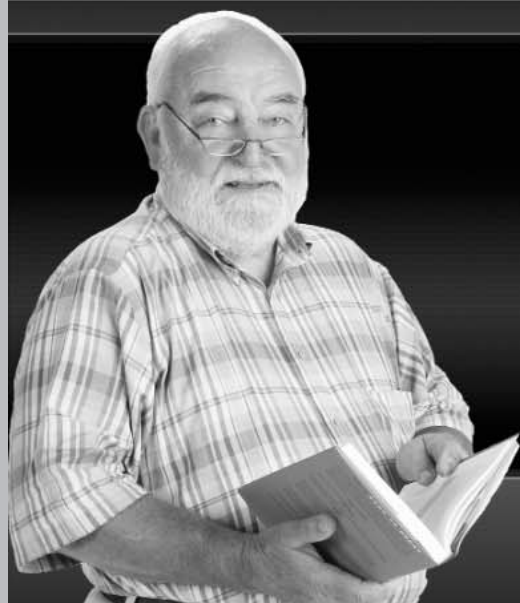
Adult Protective Services

*Older Adults Need
Protection Too!*

**WHEN IN DOUBT...
REPORT!**

**To Make A Report Contact:
The Department of Social Service
Adult Services Intake Line
250-5800**

*The
reporter's
information
is kept
confidential*



READ[®]

buncombecounty.org/read

Buncombe County Sheriff's Office

Service • Accountability • Integrity • Professionalism • Dignity



Sheriff Van Duncan

Main Phone number: 250-4503 (8:30-5:00 m-f)
 Communications: 255-5555 (24 hrs.)
 Crime Stoppers: 255-5050
 Court Security: 250-4555
 Animal Control: 253-1195
 Crime Prevention: 250-4547
 Department Chaplain: Richard Baird 250-4507
 Senior Reassurance Program: 250-4547

Address:
 202 Haywood Street
 Asheville, NC 28801



ATTENTION KIDS: Your Buncombe County Sheriff's Office says "Be Alert to Stranger Danger". Always tell a parent or trusted adult if you feel threatened or uncomfortable. Be careful who you talk to on the internet and NEVER give out information like your name, address, phone number or school. Do you have an I.D.? See page 21 for details.

ATTENTION PARENTS: Protect yourself against identity theft.

- Check your annual credit report at annualcreditreport.com.
- If you think you have been a victim, call 1-877-ID-THEFT and the three national credit reporting organizations immediately to place a fraud alert on your name and social security number:
 - Equifax 800-525-6285
 - Experian 800-397-3742
 - TransUnion 800-680-7289
 - Social Security Administration (fraud line) 800-269-0271.
- Report the possible fraud to your local Police Department and/or Sheriff's Office.

Protect your children from internet predators.

- To become more familiar with who is "out there" visit America's Most Wanted at amw.com.

It is important to pay close attention to what your children are doing. You would not let them play in or near a busy street or highway, therefore, why let them play on the super highway of the internet.



Did You Know?

- It is illegal for any owner or keeper to fail to provide his animals with adequate food, water, shelter, a clean living environment free of debris and excessive waste, veterinary care when needed to prevent suffering and with humane care and treatment.
- It is unlawful for anyone to abandon an animal except to relinquish the animal to the animal shelter during normal business hours.
- It is illegal for anyone to own or harbor any dog or cat over the age of six months that has not been spayed or neutered unless such person holds an unaltered animal permit issued for such animal by the department of animal services.

Citizens can apply for an Unaltered Permit with the Sheriff or his designees. The fee for an unaltered animal permit is \$100. A tag will be issued identifying the animal as an unaltered animal and must be displayed at all times. Citations will be issued to owners of unaltered animals not holding a permit. If the animal is altered within 30 days, the citation will be waived.

- For spay/neuter discount information call 253-1195.



Programs For A Better Life

ONGOING

The Buncombe County Extension Center has several educational programs offered during the year. To receive a current schedule, visit our web site at: <http://buncombe.ces.ncsu.edu/> and select Events or call the Center at 255-5522.

Buncombe County Bee Keepers Chapter meets the 2nd Monday of each month from 7 – 9 pm at the Buncombe County Extension office, 94 Coxe Avenue, Asheville. Contact Amanda Stone, 255-5522.

Certified Plant Professional Short Course – June - July. Meets Tuesday & Thursday evenings from 4:30 - 7:30 pm at the NC Arboretum. For more information, contact Amanda Stone, 255-5522.

Low Cost Shot Clinics (Rabies & Combo)

- Date: April 28; May 26; June 30; July 28; August 25
- Location & Time: TBA – call Buncombe County Animal Services at 253-1195.
- Cost: \$5 for Rabies vaccinations; \$15 for Combination.

Rabies Clinics (Rabies Only)

- Dates: Appointments Required - April 14; May 12; (June 9 - Fairview Elementary, no appointment required); July 14; August 11; September 8
- Location: 72 Lee's Creek Road (except for June 9)
- Cost: \$5 for Rabies vaccinations ONLY

For more information or to make an appointment, contact the Asheville Humane Society at 236-3885.

Super Sunday Specials

- Date: Sundays from 1 – 2 pm
- Location: "Super Sunday Specials" will take place at Cane Creek Pool, Erwin Community Pool, Hominy Valley Park Pool, North Buncombe Park Pool and Owen Pool.
- Cost: All participants pertaining to the events listed below will get in free:

May 27 - Welcome Students Day (all students)
 June 3 – Mother's Day
 June 10 - Baby Day (all infants 3 and under)
 June 17 – Father's Day (all Fathers)
 June 24 - Kid's Day (all kids age 3 to 12)
 July 1 - Independence Bathing Suit Day (wear a red, white or blue suit)
 July 8 - Grand Parents Day (all Grand Parents)
 July 15 - Manna Food Bank Day (bring a canned food item and get in free)
 July 22 - County Resident day (bring proof of residency)
 July 29 - Pet Day (bring a picture of your pet)
 August 5 - Teen Day (All Teens)
 August 12 - Back to School Day (all students)

APRIL

The Big Read: "To Kill a Mockingbird"

- Date: April 14 at 2 pm
- Location: Pack Memorial Library
- Cost: Free.

The Big Read: "To Kill a Mockingbird" film will be shown as part of a "See the movie, Read the book" program, with the second part taking place on April 28. Questions? Call Pack Memorial Library at 250-4700.

Cradle of Forestry

- Date: April 17
 - Register: Contact Grace Young at 250-4265.
 - Depart/Arrival: 9:30 am / 3:30 pm - Trip will depart and arrive from the Buncombe County Parks & Recreation Administration Office in Erwin.
 - Cost: \$25 per person (transportation)
- The Cradle of Forestry in America is a 6,500 acre Historic Site within the Pisgah National Forest. Outdoor activities include two guided trails which lead you back in time to seven historical buildings, a 1915 Climax logging locomotive and the old sawmill. Wear hiking shoes.

Perennials & Grasses for WNC Gardens

- Date: April 25 from 4:30 – 6 pm
- Location: Bullington Center, 33 Upper Red Oak Trail, Hendersonville, NC.
- Cost: \$7.50 per youth. Register by April 12.
- Contact: (828) 698-6104 or visit the website at: www.bullingtoncenter.org

Jean-Claude Linossi, horticulturalist from Etowah Valley Country Club will highlight perennial plants and ornamental grasses that perform especially well in our area.

'Growing in the Mountains' Plant Show & Sale

- Date: April 27 – 28 from 9 am – 6 pm
- Location: WNC Farmers' Market, Asheville, NC
- Contact: Buncombe County Cooperative Extension at 255-5522.

The Big Read: "To Kill a Mockingbird"

- Date: April 28 at 2 pm
- Location: Pack Memorial Library
- Cost: Free.

The Big Read: "To Kill a Mockingbird" book discussion hosted by Jerry Crouch with a dramatic reading by acclaimed actor Ralph Redpath as Atticus Finch, takes place on Harper Lee's birthday! Questions? Call Pack Memorial Library at 250-4700.

Building or Remodeling?

- Date: April 28 from 8:30 am – 5 pm
- Location: NC State University Mountain Horticultural Crops Research & Extension Center
- Cost: \$40 per person or \$50 per couple.
- Contact: Nancy Ostergaard at 255-5522.

Learn about the common wood products used in home construction, from the structure to the exterior and interior. The Workshop will also share resources of craftsmen and companies that produce products locally.

Kids Fishing Derby

- Date: April 28 from 8:30 - 11:30 am
- Location: Lake Julian, call 684-0376.
- Cost: \$5 per child.

The age categories are 5 and under, 6-10 and 11-15. Prizes will be awarded in each age category for biggest fish, smallest fish and most fish caught.

Programs For A Better Life

MAY

Commercial & Private Applicators Pesticide License Exam & School

- Date: May 1-2
- Location: Mountain Horticultural Crops Research & Extension Center, Fletcher, NC
- Contact: Buncombe County Cooperative Extension at 255-5522.

Smith McDowell House & Nature Center

- Date: May 3
 - Register: Contact Grace Young at 250-4265.
 - Depart/Arrival: 9:30 am / 4 pm - Trip will depart and arrive from the Buncombe County Parks & Recreation Administration Office in Erwin.
 - Cost: \$26 per person (transportation & admission)
- Enjoy a tour of Asheville's first mansion and oldest surviving structure, and then visit the Nature Center. At the Nature Center, explore 42 acres of wildlife garden trails and indoor exhibits. Bring money for lunch and walking shoes.

Gardening in the Mountains: Master Gardeners' Favorite Plants

- Date: May 8 from 10 – 11 am
 - Location: NC Arboretum
 - Cost: Free admission on Tuesdays.
 - Contact: Linda Blue at 255-5522.
- Presented by Extension Master Gardeners. Several Master Gardeners will share information about their favorite garden plants. No registration required.

Lake Julian

- Date: May 9
 - Register: Contact Grace Young at 250-4265.
 - Depart/Arrival: 10 am / 3 pm - Trip will depart and arrive from the Buncombe County Parks & Recreation Administration Office in Erwin.
 - Cost: \$25 per person (transportation & food)
- Enjoy a day at one of Buncombe County's most beautiful parks. Walk, feed the ducks and enjoy a pontoon boat ride around the lake. We will also enjoy a great picnic under one of the large pavilions. Wear comfortable clothes and shoes.

Teen Club Hikers: Mount Pisgah Hike

- Date: May 12
- Register: Register by May 4 - limit of 12 people. Call 250-4269.
- Depart/Arrival: 10 am / 3:30 pm - We will depart from the Interchange building located on Charlotte Street.
- Cost: \$15 per person.

Join in on the fun with Buncombe County Parks and Recreation Services! Our Teen Club Hikers program is for youth ages (11-15 years old) residing in Buncombe County.

Bicycle Rodeo

- Date: May 12 from 9 am - 2 pm
 - Register: Contact Grace Young at 250-4265.
 - Location: Biltmore Square Mall (near Dillard's)
- Get a technical safety inspection from a representative of Liberty Bikes. Local area Fire Departments will also be on site for demonstrations. The Buncombe County Sheriff's Office/Crime Prevention Unit and the Asheville Police Department will be conducting Kid ID's. Lots of other activities, too! Come on out and join us for an exciting and educational adventure!!!!

M*A*S*H* and All That

- Date: May 14 - 16 at 6 pm
 - Location: Pack Memorial Library
 - Cost: Free.
- M*A*S*H* and All That, a retrospective film series of Robert Altman begins on 5/14 with "M*A*S*H*" (1969), then "Nashville" (1975) on 5/15 and "The Player" (1992) on 5/16. These films will be hosted by film critic Peter Loewer. Questions? Call Pack Memorial Library at 250-4700.

Dr. Eliot Engel - "Da Vinci-Before the Code"

- Date: May 20 at 2:30 pm
- Location: Pack Memorial Library
- Cost: Free.

Noted scholar, writer, humorist, and performer Dr. Eliot Engel will make his 23rd appearance at Pack Memorial Library to lecture on "Da Vinci-Before the Code." This award-winning professor will appear on Sunday May, 20th at 2:30pm.

Washington, D.C. Garden Tour

- Date: May 31 - June 2
- Location: Washington, D.C.
- Cost: Bus Trip: \$100; Hotel: \$120/night double occupancy
- Register: By May 21.
- Contact: Amanda Stone at 255-5522.

Among the stops include National Arboretum, US Botanical Gardens, Museums on the Mall, Lewis Ginter Arboretum.

JUNE

Basic Home Maintenance – 5 session course

- Date: June 5, 7, 12, 14 & 19 from 5:30 – 7:30 pm
- Location: Buncombe County Extension Office, 94 Coxe Avenue in Asheville
- Cost: \$20 fee includes all course materials. Pre-registration is necessary as space is limited. To register, call Buncombe County Cooperative Extension - 255-5522.

Some of the topics to be covered are: saving on your heating and cooling bills, basic plumbing repairs, interior and exterior maintenance, landscaping and lawn care, indoor air quality, common household pest, etc. The course also offers "hands-on" activities that include repairing: leaking faucets, damaged drywall, and replacing window screens.

Greenville Zoo

- Date: June 5
 - Register: Contact Grace Young at 250-4265.
 - Depart/Arrival: 10 am / 6 pm - Trip will depart and arrive from the Buncombe County Parks & Recreation Administration Office in Erwin.
 - Cost: \$30 per person (transportation & admission)
- Wildlife from around the world is exhibited in a natural, open-air display at this large zoo. We will also enjoy some shopping and of course bring enough money for lunch. Wear comfortable shoes for a lot of walking.

Model Air Show

- Date: June 9 from 10am - 2pm
- Location: Buncombe County Sports Park
- Cost: Free.
- Contact: Jay at 250-4269.

Heads up! Here is your chance to check out model airplanes of all shapes and sizes at the Buncombe County Sports Park!

Programs For A Better Life

Gardening in the Mountains: Gardening with Native Plants

- Date: June 12 from 10 – 11 am
- Location: NC Arboretum
- Cost: Free admission on Tuesdays.
- Contact: Linda Blue at 255-5522.

Presented by Master Gardeners. Many native plants are wonderful additions to the landscape. No registration required.

2nd Annual Parent/Child Miniature Golf Tournament – 2nd Round Playoffs

- Date: June 16 from 1 – 4 pm
- Location: Tropical Gardens Mini Golf
- Cost: \$15.
- Contact: Jay at 250-4269.

If you didn't get a chance to play in the first round or you qualified from the first round, take your best shot at the Second Round Playoffs! This is your chance to make the top ten so that you can compete in the Ultimate Golf Tournament to be held in September.

Buncombe County Chautauqua 2007 - "American Stage: Spotlight on Ourselves"

- Date: June 18 – 21 at 7 pm
- Location: Smith-McDowell House Museum
- Cost: \$3 admission nightly - \$8 pass for the entire series
- Contact: Pack Library at 250-4700.

Featuring: Harry Houdini, Lillian Hellman, Mark Twain, Will Rogers and Paul Robeson

Certified Plant Professional Short Course

- Date: June 19 - July 21
- Location: NC Arboretum
- Cost: \$100 (includes text and class materials)
- Register: By May 1.
- Contact: Amanda Stone at 255-5522.

This class is designed to assist participants in developing their level of knowledge and professionalism in the area of landscape plants and use.

Lake Lure Lunch Cruise

- Date: June 21
- Register: Contact Grace Young at 250-4265.
- Depart/Arrival: 9:30 am / 4 pm - Trip will depart and arrive from the Buncombe County Parks & Recreation Administration Office in Erwin.
- Cost : \$45 per person (transportation, cruise & lunch)

Discover the beauty and charm of Lake Lure while a skipper guides us past local attractions and landmarks. Do all this while enjoying a special box lunch. Wear that sunscreen and comfortable "yacht" clothes and shoes.

South East Greenhouse Growers Conference & Trade Show

- Date: June 21 - 24
- Location: Palmetto Expo Center, Greenville, SC
- Contact: Buncombe County Cooperative Extension at 255-5522.

This is the largest educational conference and trade show in the south focused on the greenhouse grower and 'color' industry.

Beach Volleyball Tournament

- Date: June 23 from 12 – 6 pm
- Location: Buncombe County Sports Park
- Register: Between May 1 and June 15.

- Cost: \$10 per person.
- Contact: Jay at 250-4269.

Don't miss the chance to compete in Buncombe County Parks and Rec's Beach Volleyball Tournament!

Horn in the West

- Date: June 24
 - Register: Contact Grace Young at 250-4265.
 - Depart/Arrival: 2 / 11:30 pm - Trip will depart and arrive from the Buncombe County Parks & Recreation Administration Office in Erwin.
 - Cost: \$40 per person (transportation & admission)
- "Horn in the West," the nation's oldest Revolutionary War drama, brings to life the famous frontiersman Daniel Boone and the hearty mountain settlers in their struggle to preserve their freedom during the turbulent years of the War for Independence. Bring a sweater or lightweight jacket – the show is in an outdoor theater.

Master Gardeners' Garden Tour

- Date: June 30 from 9 am – 4 pm
- Cost: Advance ticket sales - \$15; Call 255-5522.

This educational garden tour will include five private gardens of Buncombe County Master Gardeners as well as two demonstration gardens.

JULY

July 4th Fireworks

Celebrate the 4th of July at a spectacular light show at Lake Julian Park in Skyland. The show is free and will begin at sundown. For more information, call 250-4262.

Gardening in the Mountains: Growing Small Fruits

- Date: July 10 from 10 – 11 am
- Location: NC Arboretum
- Cost: Free admission on Tuesdays.
- Contact: Linda Blue at 255-5522.

Presented by Extension Master Gardeners. Small fruits, including blueberries, blackberries, and raspberries can be grown in most mountain gardens. No registration required.

Food for the Soul - Lunch & Storyteller

- Date: July 10
 - Register: Contact Grace Young at 250-4265.
 - Depart/Arrival: 11am / 3 pm - Trip will depart and arrive from the Buncombe County Parks & Recreation Administration Office in Erwin.
 - Cost: \$23 per person (transportation & lunch)
- Nothing warms the heart or comforts the soul quite like good home-made food unless it is a good story. Put them back to back and we are in for a great afternoon.

Focus on Flowers: Gardening with Native Plants

- Date: July 14th from 9 am – 4 pm
 - Location: NC Arboretum
 - Cost: \$40 for Arboretum members; \$46 others (includes lunch and parking).
 - Contact: To register call the NC Arboretum at 665-2492.
- This day-long symposium will focus on using native plants in the landscape.

Programs For A Better Life

Tails & Trails 5K Run

- Date: July 14 from 10 am – 12 noon
- Location: Buncombe County Sports Park
- Register: Between June 4 and July 6.
- Cost: \$10 per person & 2 cans of dog food (to be donated to the Asheville Humane Society).
- Contact: Jay at 250-4269.

If you and your dog like to run together, check out the Tails and Trails 5k run!

Penland School of Crafts

- Date: July 15
 - Register: Contact Grace Young at 250-4265.
 - Depart/Arrival: 12 noon / 7 pm - Trip will depart and arrive from the Buncombe County Parks & Recreation Administration Office in Erwin.
 - Cost: \$35 per person (transportation & admission to Gallery tour)
- Join us for a tour of the galleries of this national center for craft education. We will also go shopping in the local area, so wear comfortable shoes. Bring money for lunch.

Carolina Nights Dinner Theater

- Date: July 15
 - Register: Contact Grace Young at 250-4265.
 - Depart/Arrival: 3:30 / 10 pm - Trip will depart and arrive from the Buncombe County Parks & Recreation Administration Office in Erwin.
 - Cost: \$45 per person (transportation & dinner theater admission)
- Dinner and a show – join us for a wonderful evening of great food and entertainment.

Landscape Design Workshop

- Date: July 27 - 28
- Some design skills are necessary to take this course. For more information, contact Amanda Stone at 255-5522.

AUGUST

Gardening in the Mountains: Water Gardens

- Date: August 14 from 10 – 11 am
- Location: NC Arboretum
- Cost: Free admission on Tuesdays.
- Contact: Linda Blue at 255-5522.

Presented by Extension Master Gardeners. Learn to construct a simple water garden. No registration required.

The Historic Orchard at Altapass - A Hayride Through the Apples

- Date: August 15
- Register: Contact Grace Young at 250-4265.
- Depart/Arrival: 9 am / 4 pm - Trip will depart and arrive from the Buncombe County Parks & Recreation Administration Office in Erwin.
- Cost: \$35 per person (transportation & admission)

Join us for a 45-minute journey which begins by following the path of the Revolutionary War mountain soldiers called the Overmountain Men. The scenery is spectacular for the entire route, and the stories are entertaining and educational for all ages. Wear comfortable clothes, walking shoes and bring money for lunch and shopping.

Tour of Artists in Leicester Community

- Date: August 18
- Register: Contact Grace Young at 250-4265.
- Depart/Arrival: 10 am / 4 pm - Trip will depart and arrive from the Buncombe County Parks & Recreation Administration Office in Erwin.
- Cost: \$15 per person (transportation)

Who knew the Leicester Community has many artists? Spend a Saturday learning who they are and seeing the beauty they have created. Wear comfortable shoes and bring money for shopping.

Dinner Cruise on Lake Lure

- Date: August 24
- Register: Contact Grace Young at 250-4265.
- Depart/Arrival: 2:30 / 8 pm - Trip will depart and arrive from the Buncombe County Parks & Recreation Administration Office in Erwin.
- Cost: \$40 per person (transportation & cruise)

Experience first hand the unique beauty of Lake Lure from the comfort of a luxurious seat aboard a covered tour boat. Join us for a one-hour narrated tour of the lake, then dock at Larkin's on the Lake for a leisurely, casual lunch, with a magnificent view of the lake.

Hendersonville Apple Festival

- Date: August 31
- Register: Contact Grace Young at 250-4265.
- Depart/Arrival: 10 am / 4 pm - Trip will depart and arrive from the Buncombe County Parks & Recreation Administration Office in Erwin.
- Cost: \$22 (transportation & parking)

Capture the spirit of a hometown celebration that has something for the whole family, with many individual events and entertainers throughout the festival. Bring money for shopping and wear comfortable shoes.

SEPTEMBER

NFL - Pepsi Punt, Pass & Kick

- Date: September 15 from 10 am – 1 pm
- Location: Enka Middle School football field
- Cost: Free.
- Contact: Jay at 250-4269.

The NFL Pepsi Punt, Pass & Kick program is a national skills competition for boys and girls between the ages of 8-15.

2nd Annual Parent/Child Miniature Golf Tournament - Championship Round

- Date: September 22 from 1 – 4 pm
- Location: Tropical Gardens Mini Golf
- Cost: \$15 per team.
- Contact: Jay at 250-4269.

Join Buncombe County Parks & Rec for the Championship Round of their Second Annual Miniature Golf Tournament!

Buncombe County Government Numbers

Air Quality Agency	250-6777
Burning Control.....	255-5654
BCTV (County Government Channel)	
.....	250-4107
Child Care Services	250-6700
City/County ID Bureau	250-4665
Background Checks	250-4661
Clerk to the Board	
(of Commissioners).....	250-4105
Cooperative Extension	255-5522
County Commissioners	250-4001
COUNTY JOBLINE	250-4183
County Manager	250-4100
Election Services.....	250-4200
Emergency Services	255-5631
Emergencies.....	911
Erosion Control	250-4848
Finance	250-4130
Fire Marshal.....	255-5087
GIS Property Information System..	250-6860
Health Center	250-5000
Administration	250-5214
Dental Care	250-5011
Disease Control/Immunization ..	250-5109
Environmental Health	250-6900
Health Promotion	250-5040
Pharmacy	250-5233
Primary Care.....	250-5000
Restaurant/Septic Inspection ...	250-6900
Water Testing.....	250-6900
WIC/Nutrition.....	250-5170
JobLink.....	250-4761
Libraries:	
Pack Memorial (Main).....	250-4700
TDD for hearing impaired.....	250-4718
Renewal Line	251-4998
Mountain Mobility.....	258-0186
Mountain Area JobLink.....	250-4761
Parks & Recreation.....	250-4260
Permits/Inspections	250-5360
Personnel	250-4166
Planning	250-4830
Pre-trial Services	250-6294
Purchasing.....	250-4800
Register of Deeds	250-4300
Recordings:	
Deeds, Deeds of Trust & Other Papers	
.....	250-4300
Plats & Uniform Commercial Code Rec's	
.....	250-4302
Vital Records:	
Birth & Death Certificates	250-4301
Marriage License & Certificates	250-4301

Notary Publics	250-4300
Sheriff	255-5555
Civil Process	250-4410
Crime Stoppers.....	255-5050
Crime Prevention.....	250-4511
Detention Center (Jail).....	250-4550
Inmate Booking.....	250-4571
Senior Reassurance	250-4492
Warrants	250-4469
Social Services	250-5500
Administration	250-5700
Adult Services	250-5814
Child Support Enforcement	232-1416
Children/Family Services	250-5822
Food Assistance	250-5500
Health Choice	250-5939
Medicaid	250-5500
Protective Services Intake:	
Adults	250-5800
Children	250-5900
Veterans Services	250-5726
Work First Employment	250-5500
Workforce Development.....	250-4760
Work Permit.....	250-5500
Soil and Water Conservation	250-4785
Solid Waste	250-5460
Environmental Control	250-5461
Hazardous Waste	250-5425
Junk Cars	250-5470
Landfill.....	645-5311
Transfer Station	250-6205
Trash Pickup	250-5460
Street Addressing (Planning)	250-4845
Tax Department:	
Business Personal Property	250-4930
Collections	250-4910
Land Records	250-4970
Personal Property.....	250-4920
Real Estate	250-4940
Transportation (Mtn Mobility)	258-0186

OTHER USEFUL NUMBERS

Animal Control (City)	252-1110
(County).....	253-1195
Dead Animals (City).....	251-1122
(County) (only in roadways)	298-2741
Better Business Bureau.....	253-2392
Business License (City)	259-5595
(NC)	1-800-228-8443
Chamber of Commerce	258-6101
Charter Cable	209-2257
Child Support Enforcement	232-1416

City of Asheville	251-1122
Police	259-5870
Fire/Rescue	259-5636
Mayor.....	259-5600
Parks & Festivals	259-5800
Water billing.....	251-1122
Water leaks	259-5975
Council on Aging	277-8288
Court Related Matters:	
Clerk of Court	232-2600
Day Reporting Center	250-4281
District Attorney	232-2500
Estates and Probate	232-2696
Jury Duty	232-2706
Magistrate	250-4690
Public Defender	232-2595
Department of Labor	299-8232
Dept of Transportation (DOT)	298-2741
Driver's License (Tunnel Road)	298-4544
(Patton Avenue).....	251-6065
Eblen Foundation.....	255-3066
Employment Security Com.....	251-6200
Federal Courthouse	771-7200
Governor's Western Office	251-6160
Housing Authority	258-1222
IRS	1-800-829-1040
License Tag Office (Tunnel Road) ..	252-8526
(Smoky Park Hwy)	667-2104
Metropolitan Sewerage District.....	255-0061
Road Maintenance/Repair	
In the County	
NC Dept of Transportation	298-0390
City of Asheville	259-5850
Town of Weaverville	645-0606
Town of Montreat	669-8002
Town of Blk Mountain	669-9102
Town of Woodfin.....	253-4887
Town of Biltmore Forest	274-0824
Schools (Asheville City)	255-5304
(Buncombe County)	255-5921
Closing Hotline	776-8044
Social Security	251-9941
State Highway Patrol.....	298-4256
State Revenue	667-0597
Streets and Roads (DOT)	298-2741
Street Addressing (County).....	250-4845
(City).....	259-5850
United Way's 2-1-1.....	211
US Postal Service.....	257-4198
Zoning (City)	259-5831
(County)	250-4830