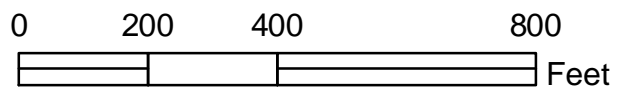
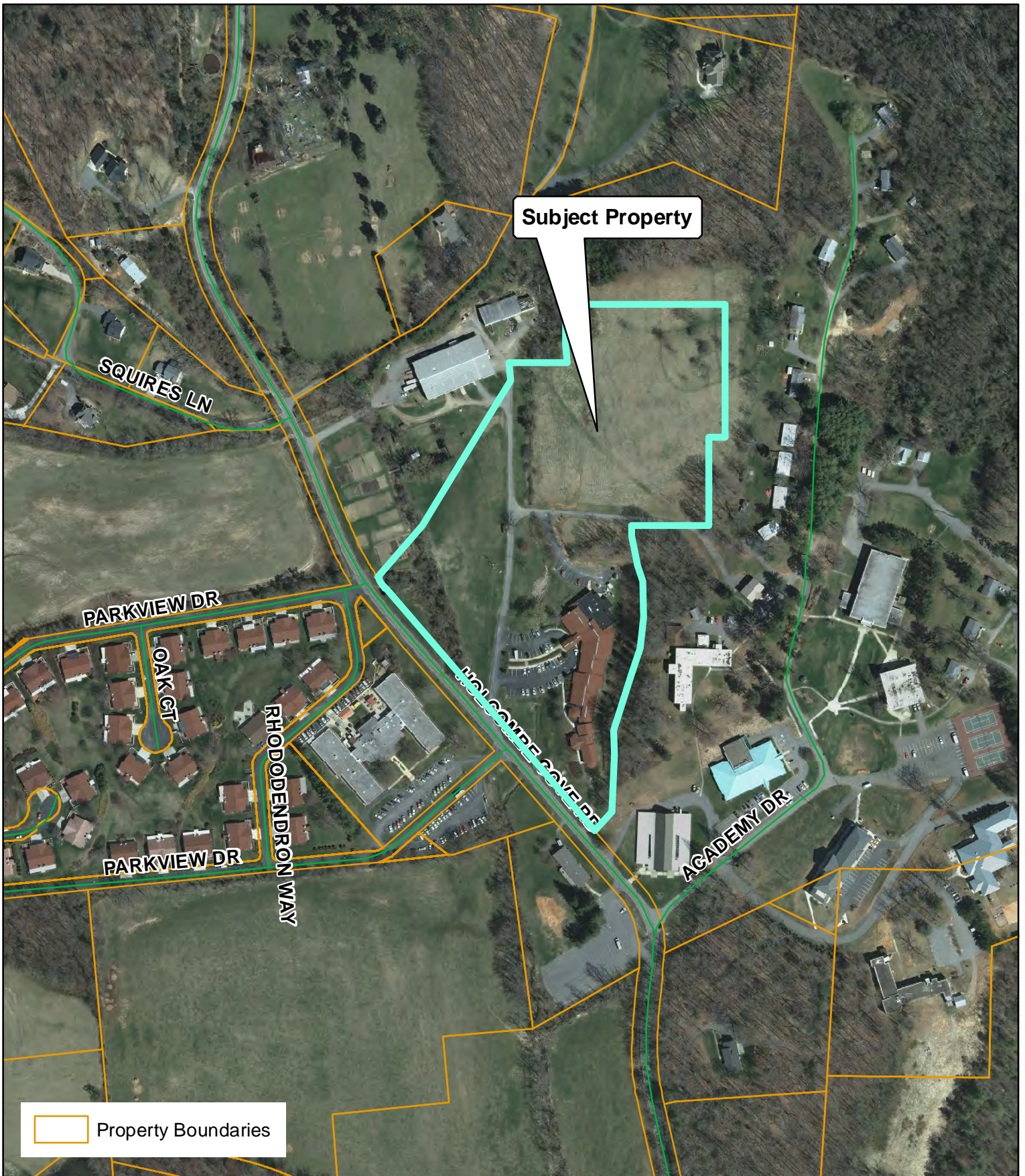


Carolina Adventist Retirement System Conditional Use Permit Application

Case Number: ZPH2012-00001
 Property Size: 13.52 acres
 Application Date: January 9, 2012
 Board of Adjustment Hearing Date: February 8, 2012



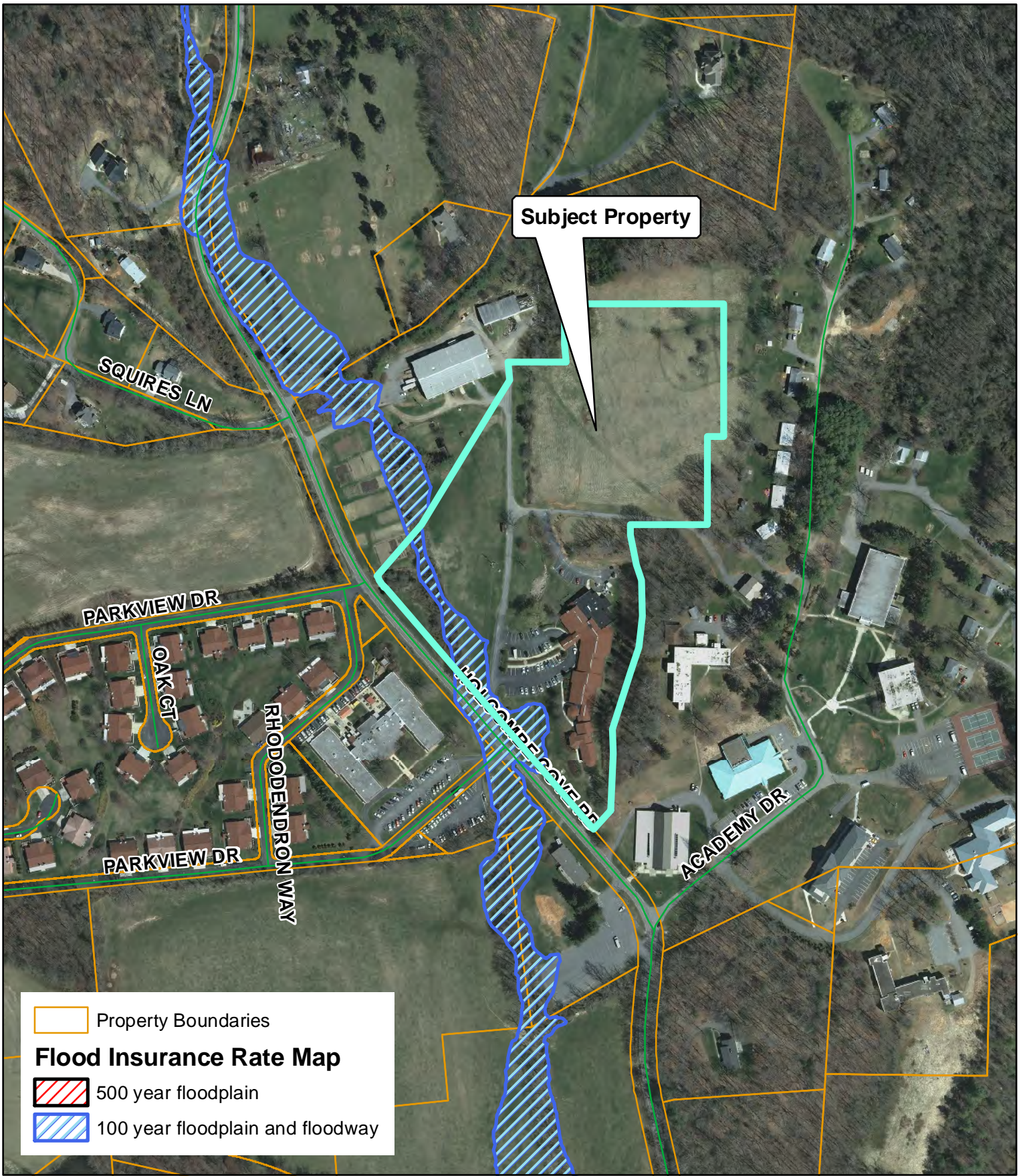
Created By: Buncombe Co. Planning
 Date: January 27, 2012



Carolina Adventist Retirement System Conditional Use Permit Application

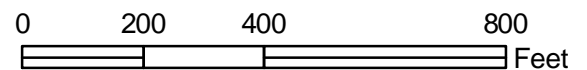
Case Number: ZPH2012-00001
 Property Size: 13.52 acres
 Application Date: January 9, 2012
 Board of Adjustment Hearing Date: February 8, 2012

Created By: Buncombe Co. Planning
 Date: January 27, 2012

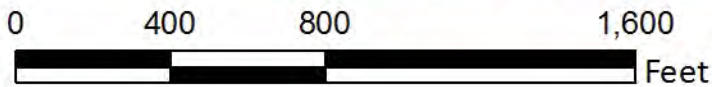
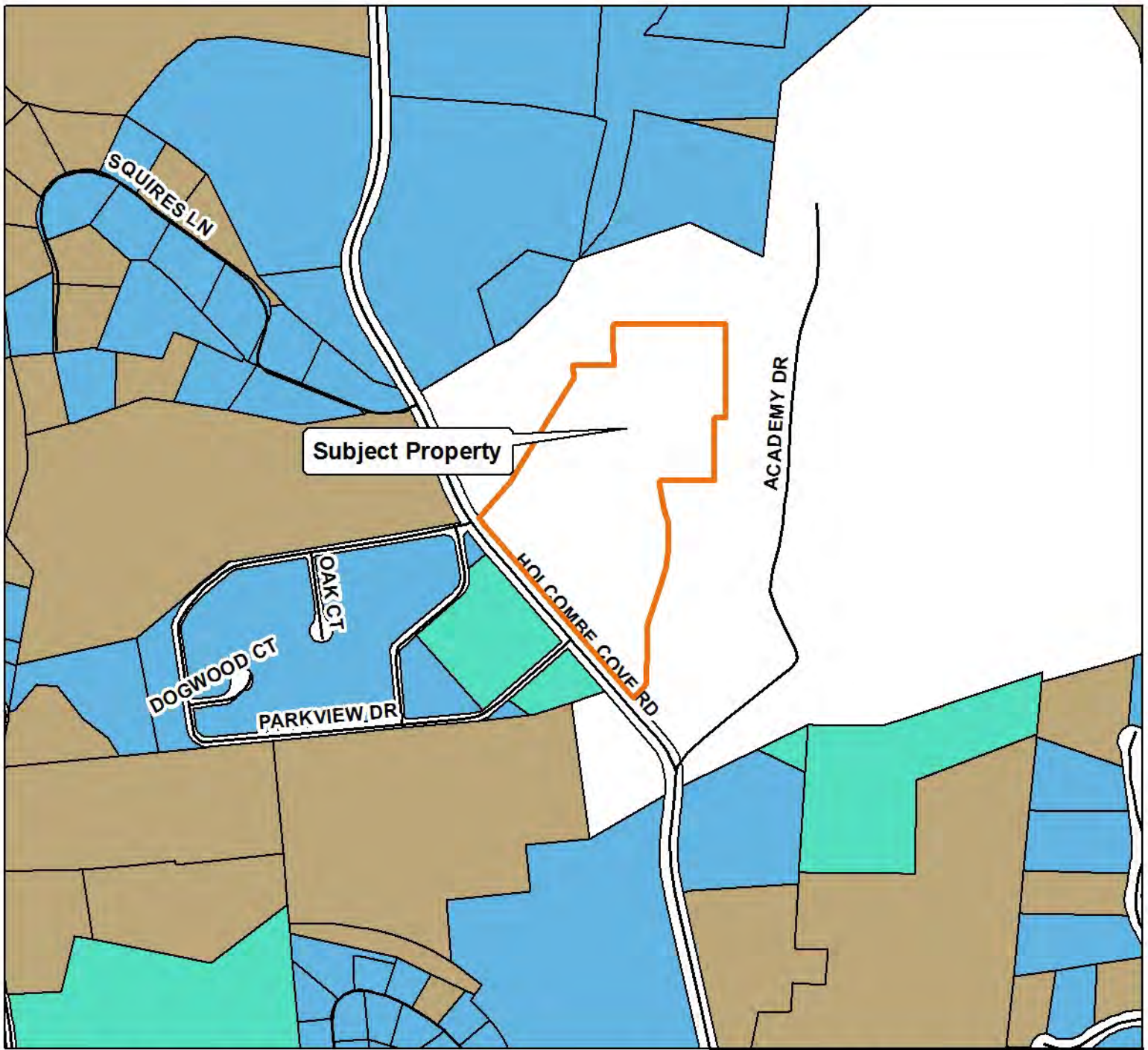


Carolina Adventist Retirement System Conditional Use Permit Application

Case Number: ZPH2012-00001
 Property Size: 13.52 acres
 Application Date: January 9, 2012
 Board of Adjustment Hearing Date: February 8, 2012



Created By: Buncombe Co. Planning
 Date: January 27, 2012



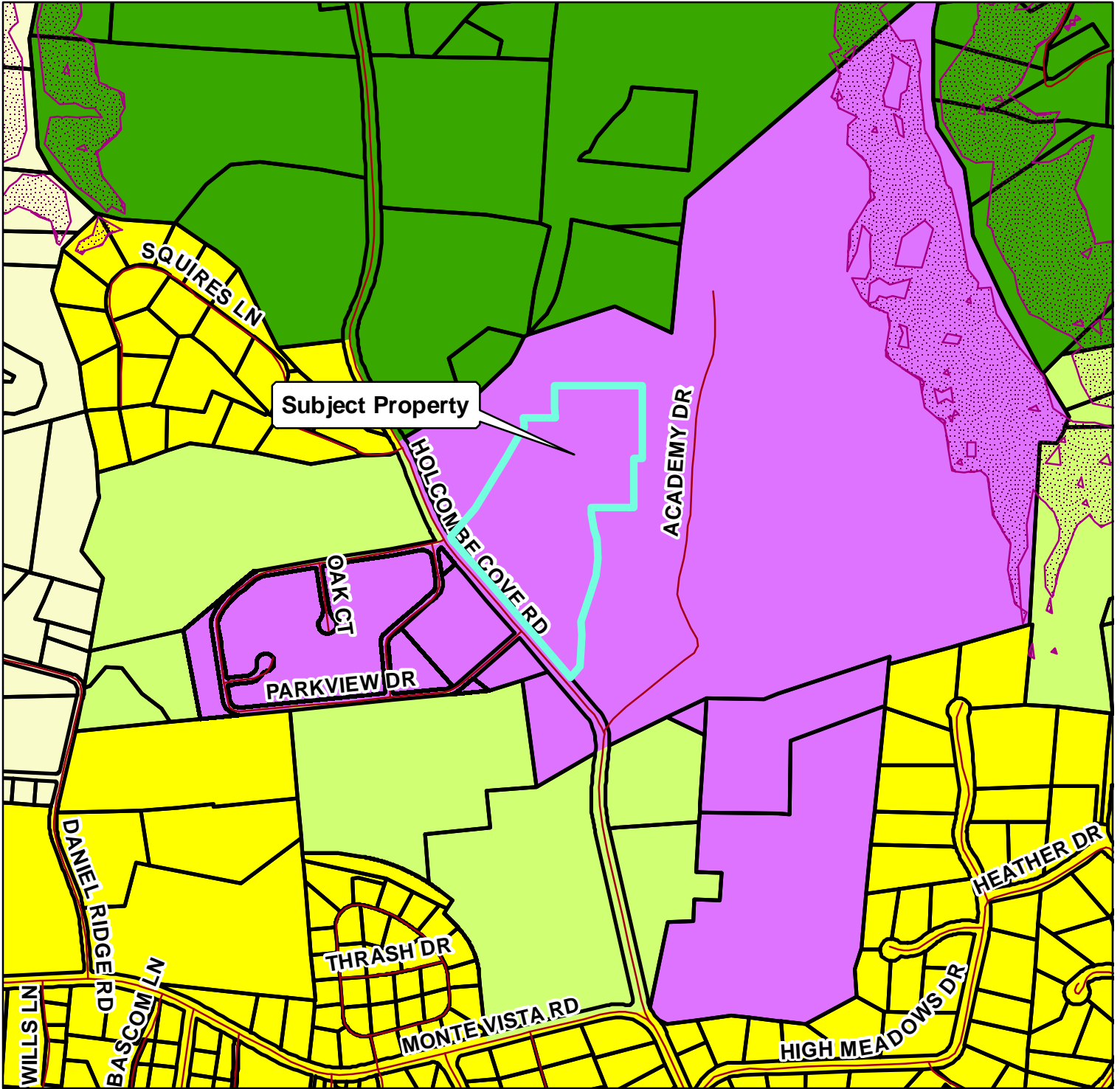
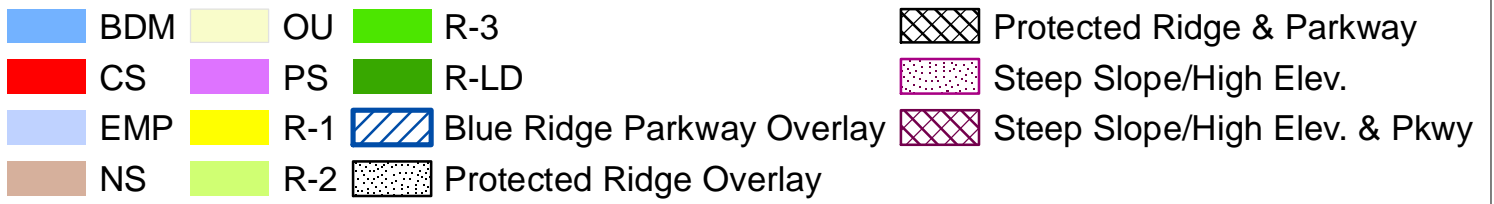
Carolina Adventist Retirement System Conditional Use Permit Application

Case Number: ZPH2012-00001
 Property Size: 13.52 acres
 Application Date: January 9, 2012
 Board of Adjustment Hearing Date: February 8, 2012

Created By: Buncombe County Planning
 Date: January 27, 2012

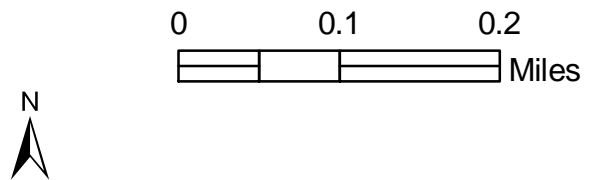
Assessed Use

- Forestry, Conservation, Parks
- Public Services
- Industry
- Community Services
- Recreational, Entertainment
- Commercial
- Vacant Land
- Agricultural
- Residential



Carolina Adventist Retirement System Conditional Use Permit Application

Case Number: ZPH2012-00001
 Property Size: 13.52 acres
 Application Date: January 9, 2012
 Board of Adjustment Hearing Date: February 8, 2012



Created By: Buncombe Co. Planning
 Date: January 27, 2012