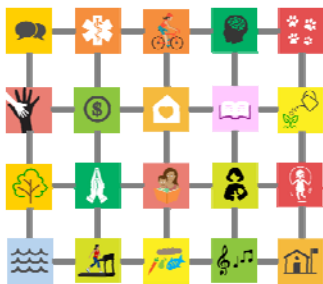


We all thrive when we live, work, play and pray in neighborhoods where we find support and have strong relationships with our neighbors



Programs and services alone are not enough

Health, safety and wellbeing are culturally created...not professionally prescribed.



No epidemic has ever been solved by paying attention to the treatment of the affected individual...

Dr. George Albee

Disappearing Equal Opportunity

- Intergenerational poverty
- Unemployment
- Disinvestment

Deteriorating Place

- Unhealthy, dangerous public spaces
- Crumbling built environment

Disconnected People

- Damaged relationships
- Destructive Social Norms
- No sense of collective "we"
- Low sense of political efficacy

The symptoms of poverty and trauma

Healing Communities from within: a working community is a safe community

Improving Equitable Opportunity

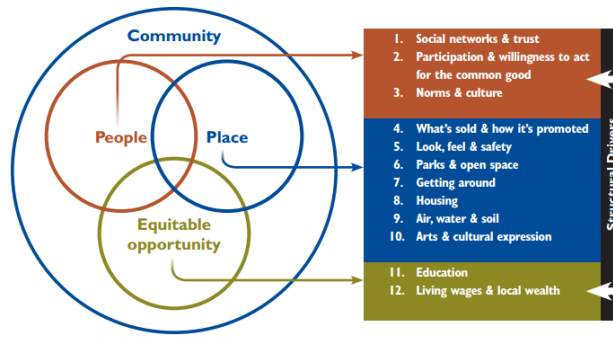
- Pipelines to jobs
- Apprenticeships
- Self-sustaining businesses

Ensuring Positive Place

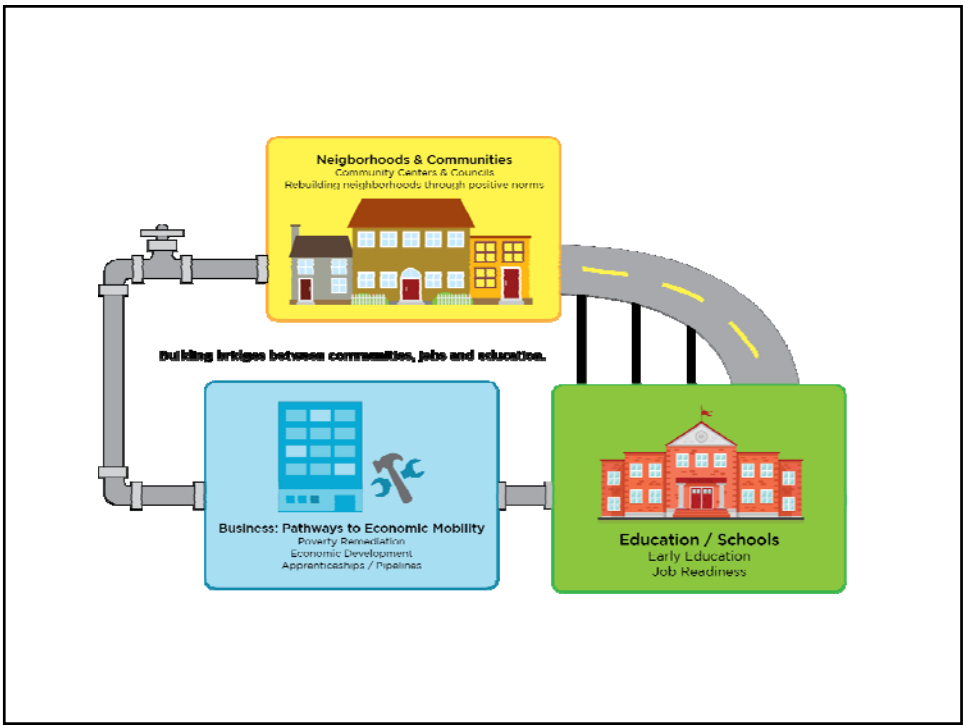
- Healthy public spaces that encourage gathering
- Gardens and walking trails
- Cultural identity that brings people together

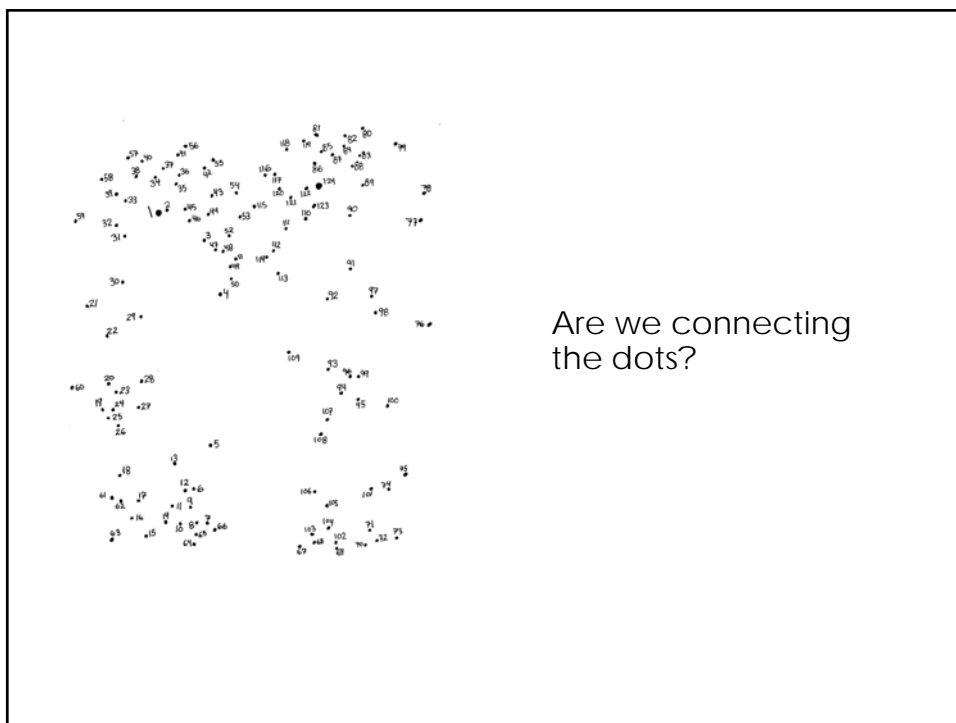
DIVERSITY ENGAGEMENT COALITION

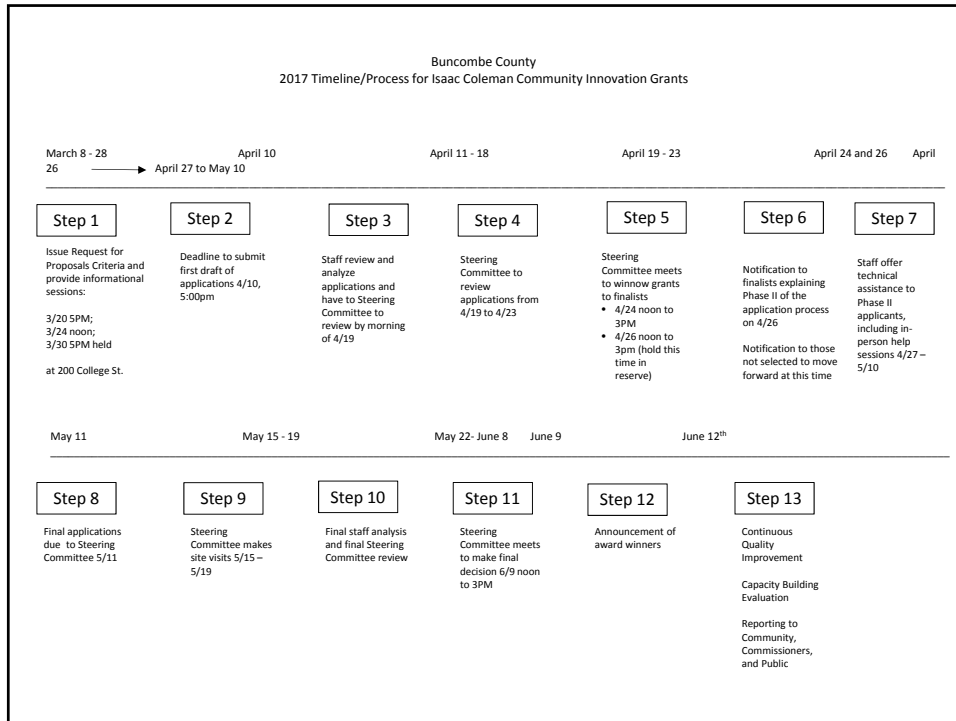
Tipping our community toward resilience... 12 Factors that shape conditions



Re-building a robust economy







Application Process

- Lead Group:
 - a. What group or organization will serve as lead group and be responsible for carrying out the award?
 - b. Do you have current availability of physical space and/or “home” your efforts? Please describe.

- Description of Group’s Shared Aspiration: Provide a description of your group’s identified shared aspiration. Please indicate how you choose this issue and how it is rooted in an issue of importance to the community. We are funding grants that are focused on economic and educational pipelines of opportunities.

- Partners: Who are the people and groups that are joining together in this partnership, and what roles will each have? How have you (or will you) develop buy in/participation of neighbors in the community? What networks of support are you plugged into?

- Approach: Provide a description of how the money will be used and how your efforts will address at least one of the three factors of the THRIVE Model. Include the target community/neighborhood(s), proposed approach and deliverables. If you have a strategic plan please describe it. You may want to describe your ways of getting community input and providing feedback to the community, current cultural components that you are using to bring people together, any lessons you have learned from your work together and how this has shaped what you are doing.

- Outcomes: List the proposed results of your efforts. How will you know you are successful? How do you tie these efforts to economic and educational opportunity? What will be different a year, two years and three years from now? What different stories will you be telling about your neighborhood?
- Budget: Attach a detailed annual budget, including proposed start-up and operating costs by category. Also include information about other sources of funding that support the work. Use this space to provide any budget notes.

- Support: What kind of other support (non-financial) would help your project to be more successful? For example coaching on budgeting, performance management, etc.
- Other: Please share other things that pertain to your group that you think are important for us to recognize as we evaluate proposals.

Questions?