



Buncombe County  
The Health of Our Community  
State of the County Report 2004

“Just as your doctor takes your vital signs to help determine your health status, we as community leaders in health must consistently monitor the health of our community population as a whole.”

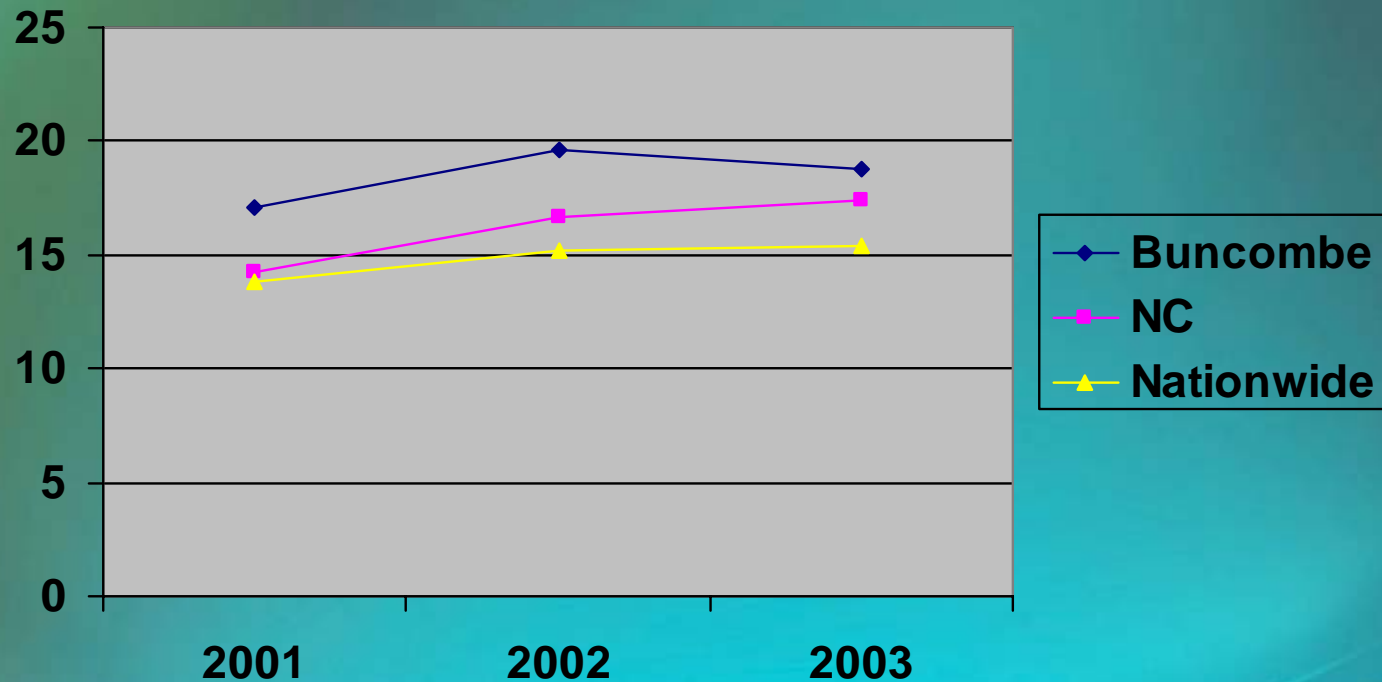
**George F. Bond, Jr., MPH**  
**Director, Buncombe County Health Center**  
**Board Chair, HealthPartners**

# Priorities

- Access to Health Care
- Access to Dental Care
- Access to Mental Health
- Eliminating Disparities in Health Care
- Medication Assistance

# Access to Health Care

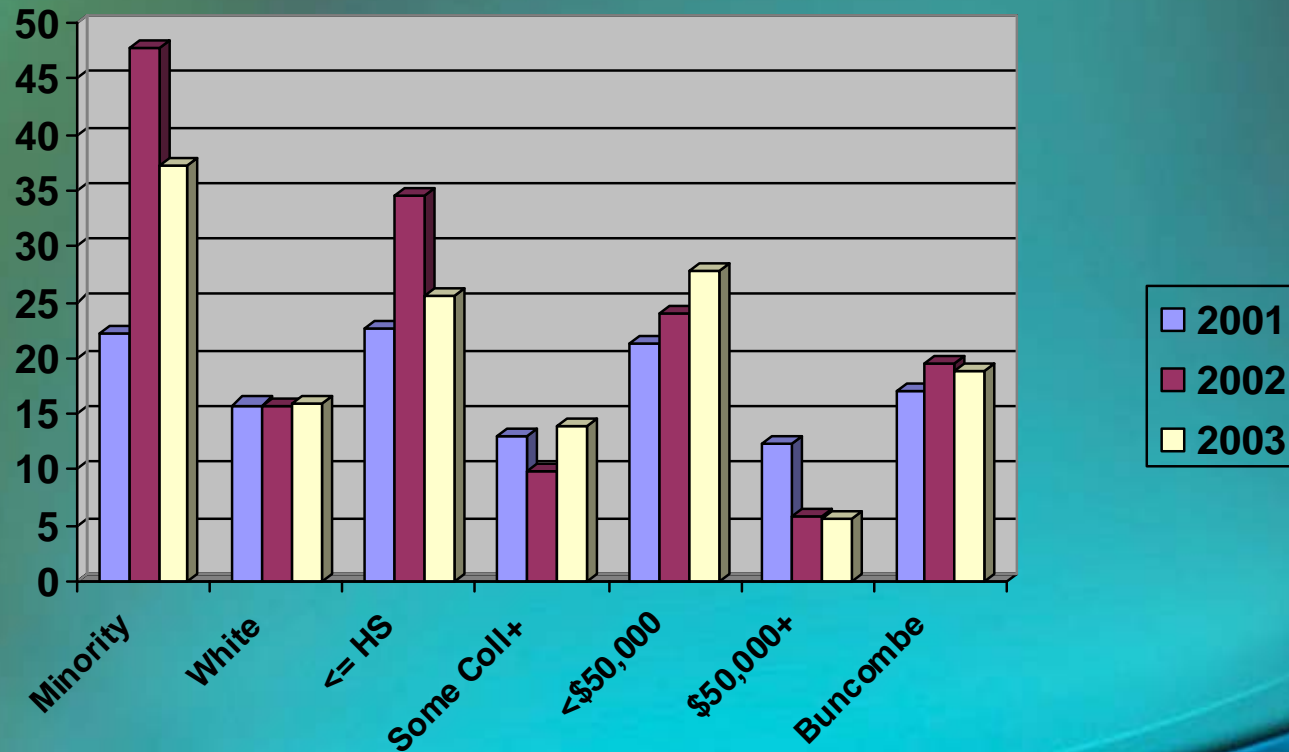
Percentage of Adults Ages 18 - 64  
Reporting No Health Care Coverage



Source: NC BRFSS (Behavioral Risk Factor Surveillance System)

# Access to Health Care

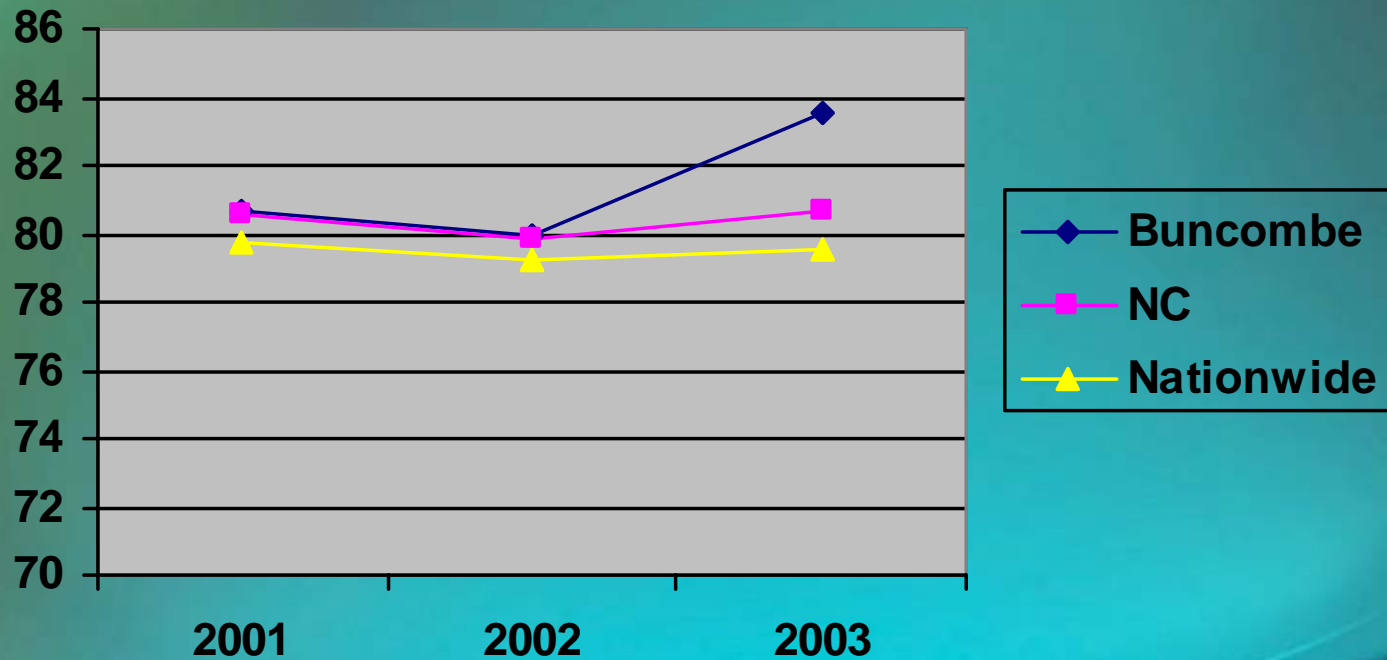
Adults 18 - 64 Reporting No Health Care Coverage in Buncombe County



Source: 2003 NC BRFSS

# Access to Health Care

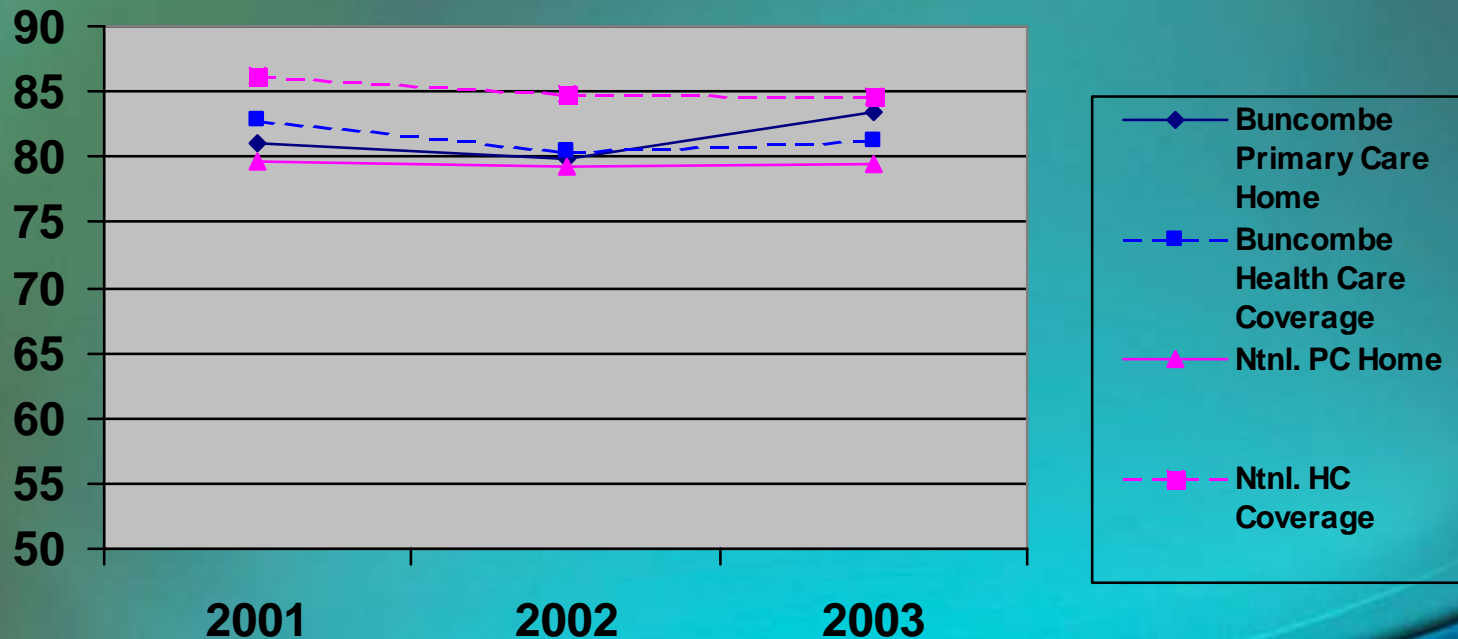
Percentage of Adults Ages 18 - 64 Reporting  
A Primary Care Home



Source: Nationwide and NC BRFSS

# Access to Health Care

Percentage of Adults 18 - 64 with Primary Care Home / Health Care Coverage, Buncombe County and Nationwide



Source: Nationwide and NC BRFSS

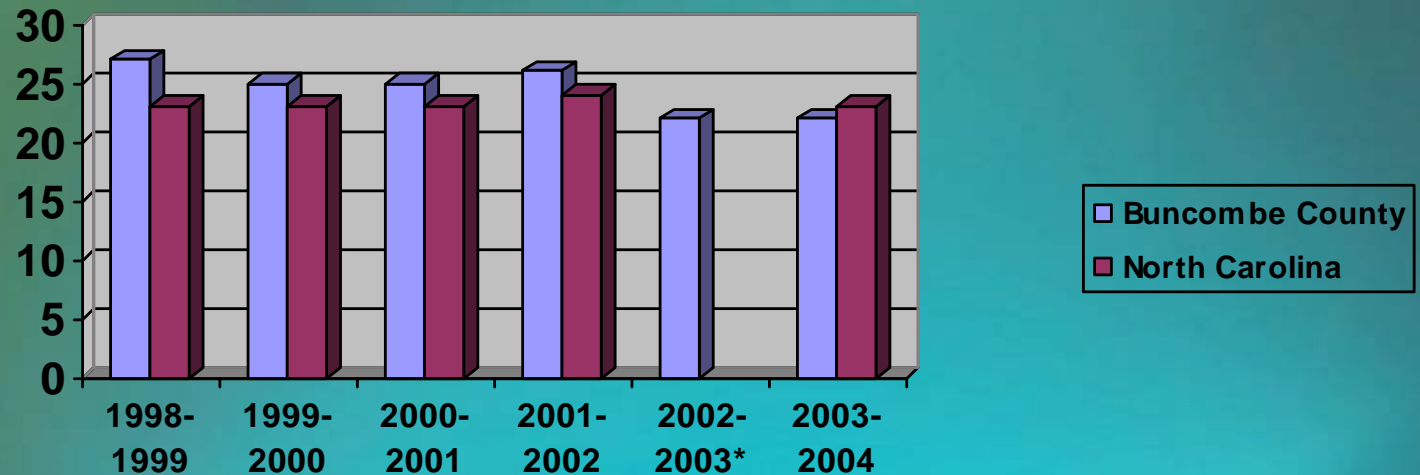
# Access to Health Care

- Community Strategies
  - Community Clinics Coalition
    - Medication Assistance
    - Primary Care Access
    - Dental Access



# Access to Dental Care

## Percentage of Buncombe Kindergarteners With Untreated Dental Disease

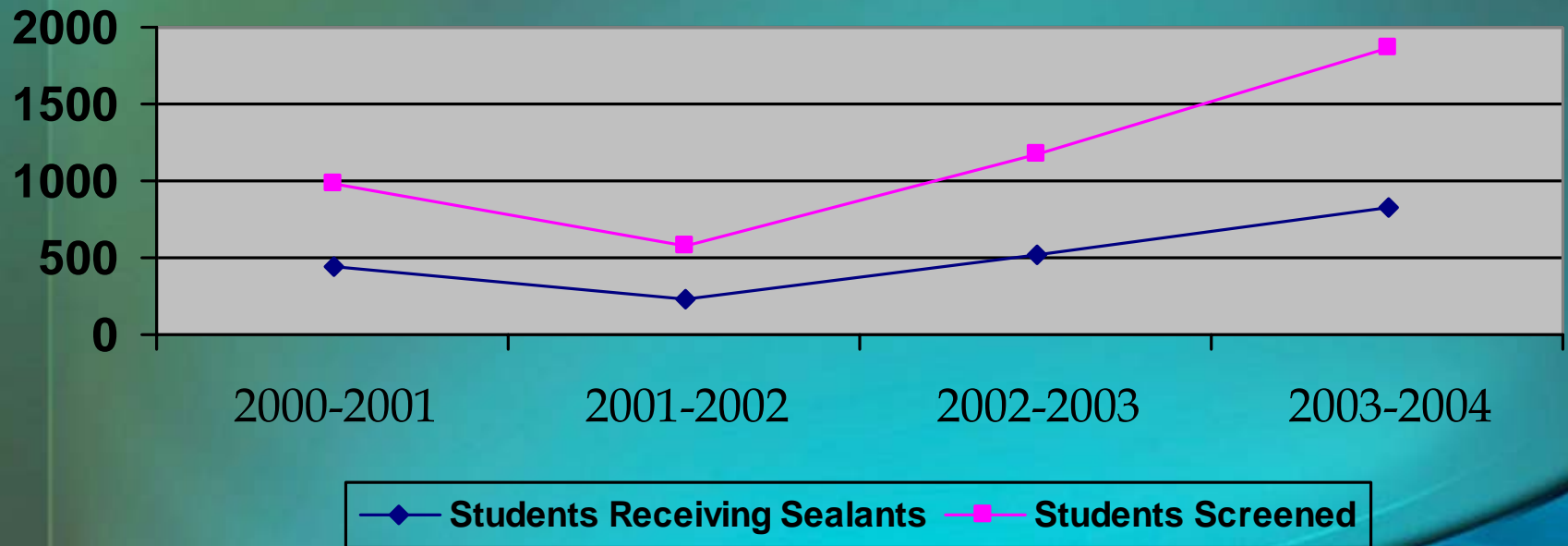


\*No state comparison data is available for the 2002-2003 school year

**Source: NC DHHS Oral Health Section and  
BCHC Dental Outreach Program**

# Access to Dental Care

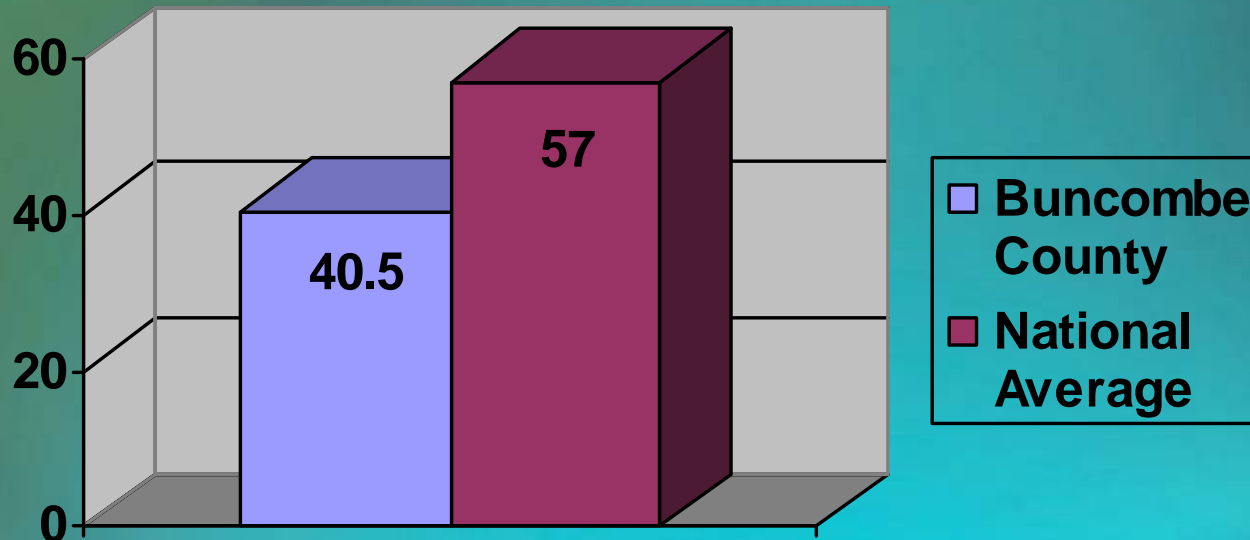
## Children's Dental Sealant Program of Buncombe County



Source: Dental Sealant Program of Buncombe County

# Access to Dental Care

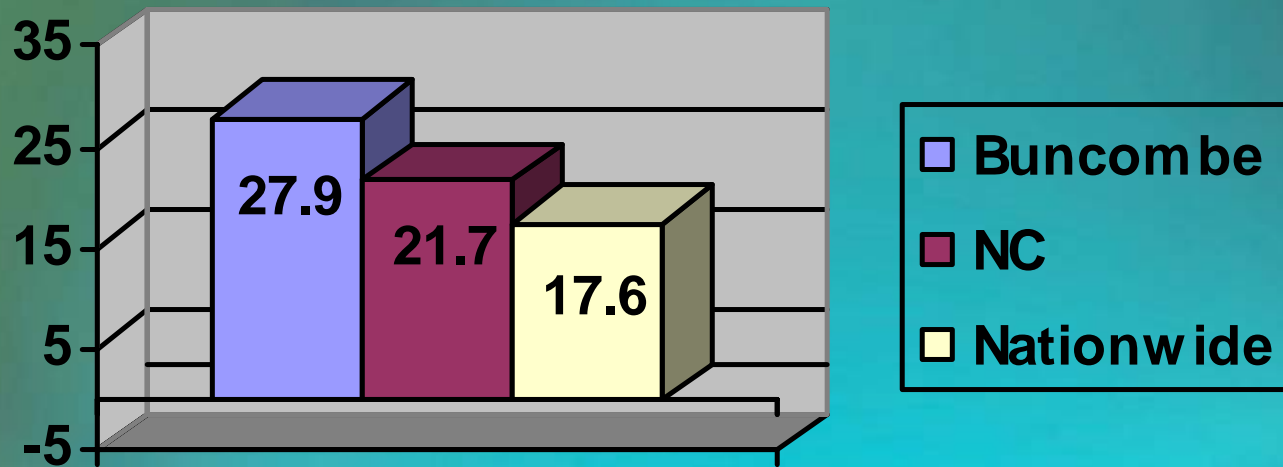
## Dentist to Population Ratio per 100,000 Residents



Source: BC Task Force on Adult Access to Dental Care

# Access to Dental Care

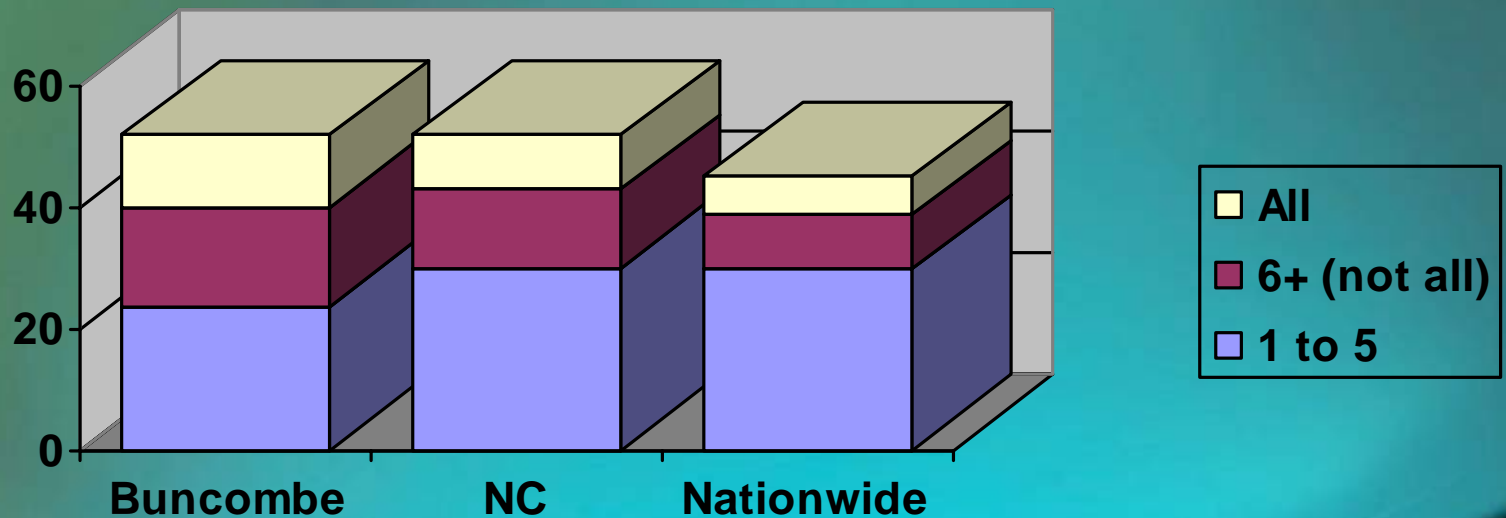
**Percentage of Adults 18-64 Who Have  
Lost 6 or More or All Permanent Teeth  
Due to Decay or Gum Loss**



**Source: 2002 NC BRFSS**

# Access to Dental Care

## Permanent Teeth Removed Due to Tooth Decay or Gum Disease



Source: 2002 NC BRFSS

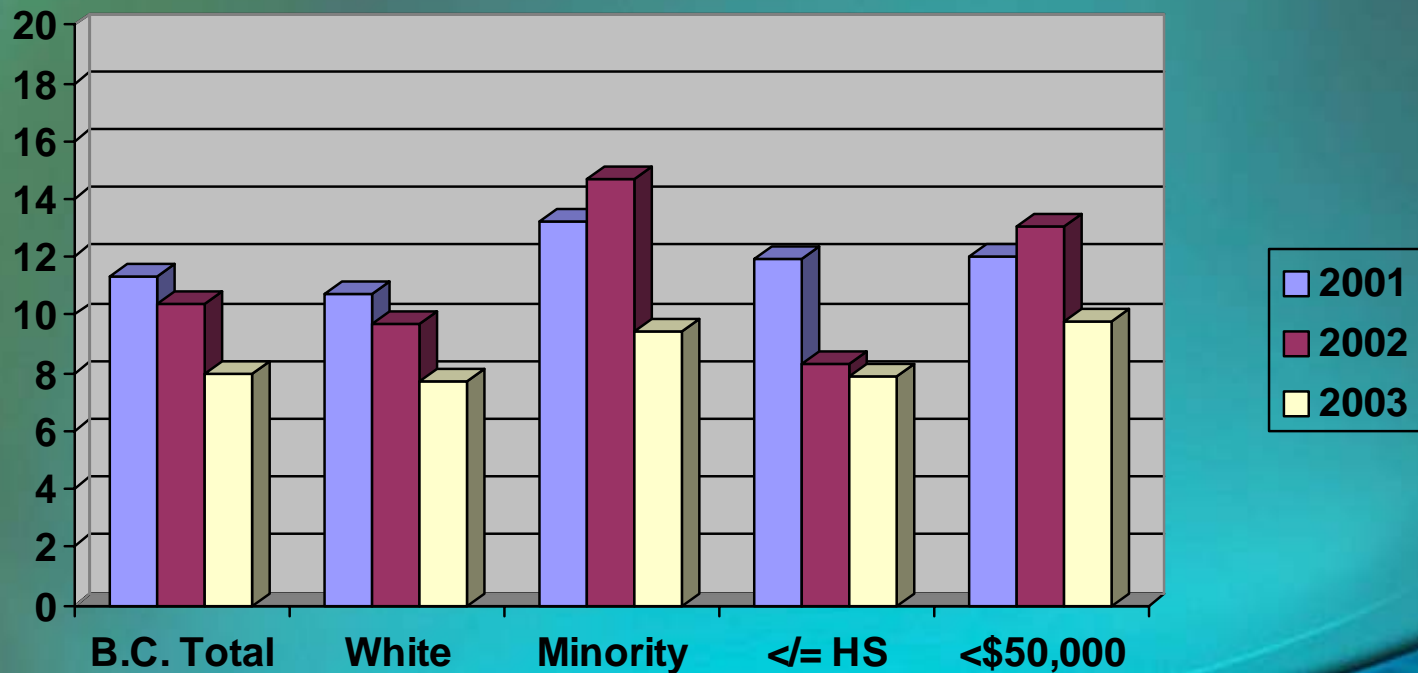
# Access to Dental Care

- Community Strategies
  - BCHC Open Wide Program
  - Children's Dental Sealant Program
  - Adult Access to Dental Care Task Force
  - Senior Health Task Force



# Access to Mental Health

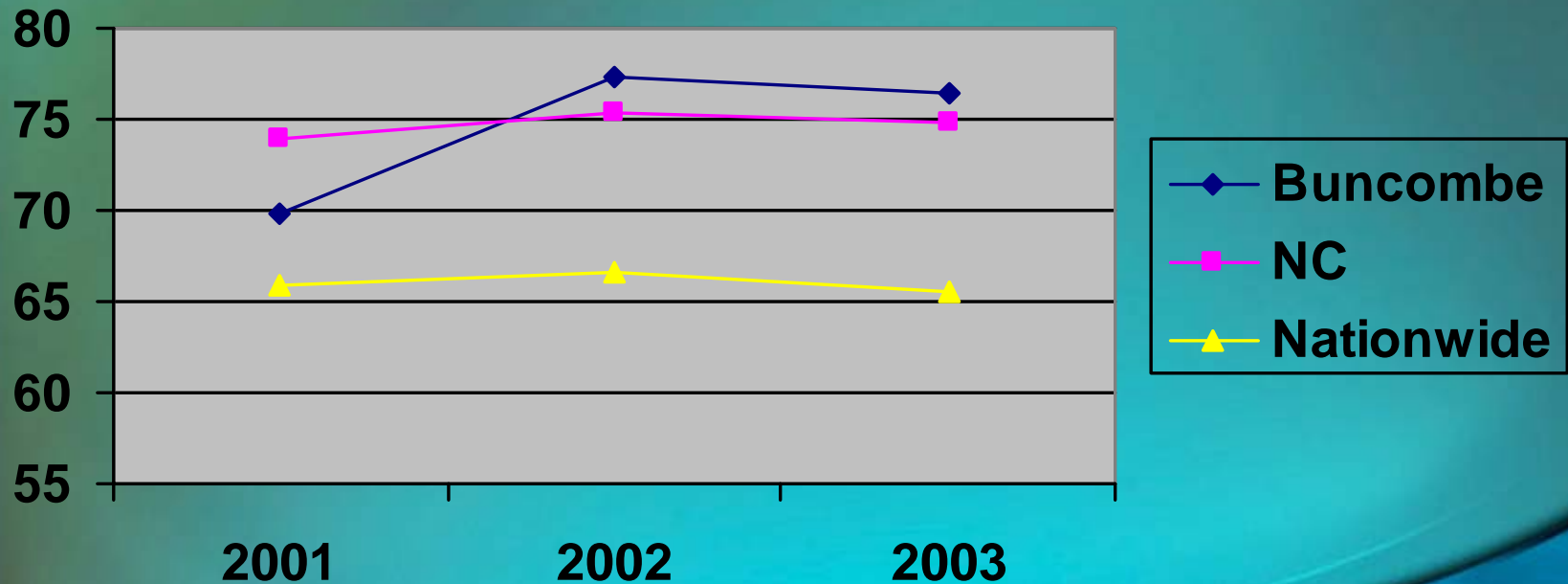
Percentage of Buncombe Adults 18-64 Who Report Their Mental Health was Not Good 8 or More Days in the Last 30



Source: NC BRFSS

# Access to Mental Health

Percentage of Adults 18-64 Reporting No Poor Mental Health Days in the Past Month



Source: Nationwide and NC BRFSS



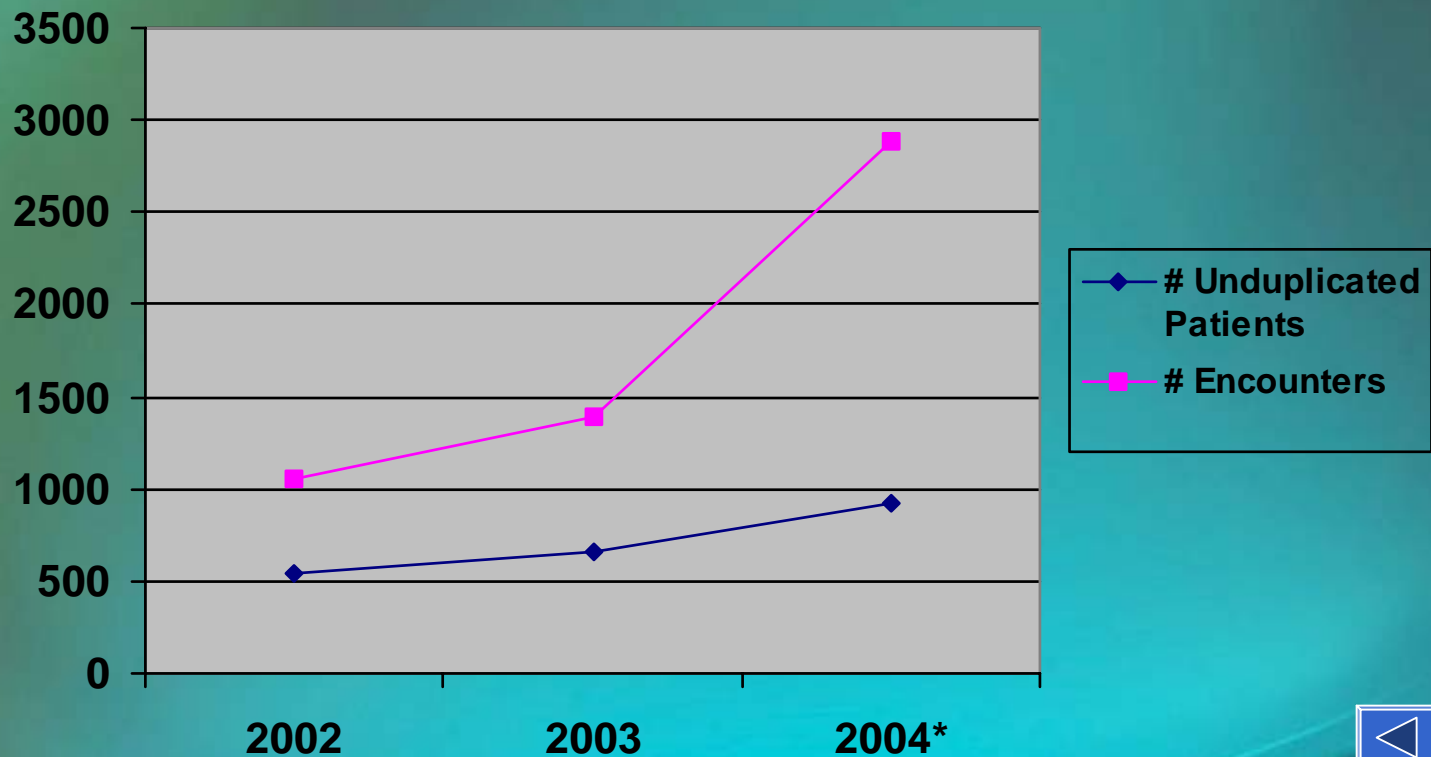
# Access to Mental Health

- Community Strategies
  - [CURES](#) program
  - Mental Health Task Force



# Access to Mental Health

## CURES Program Services by Calendar Year

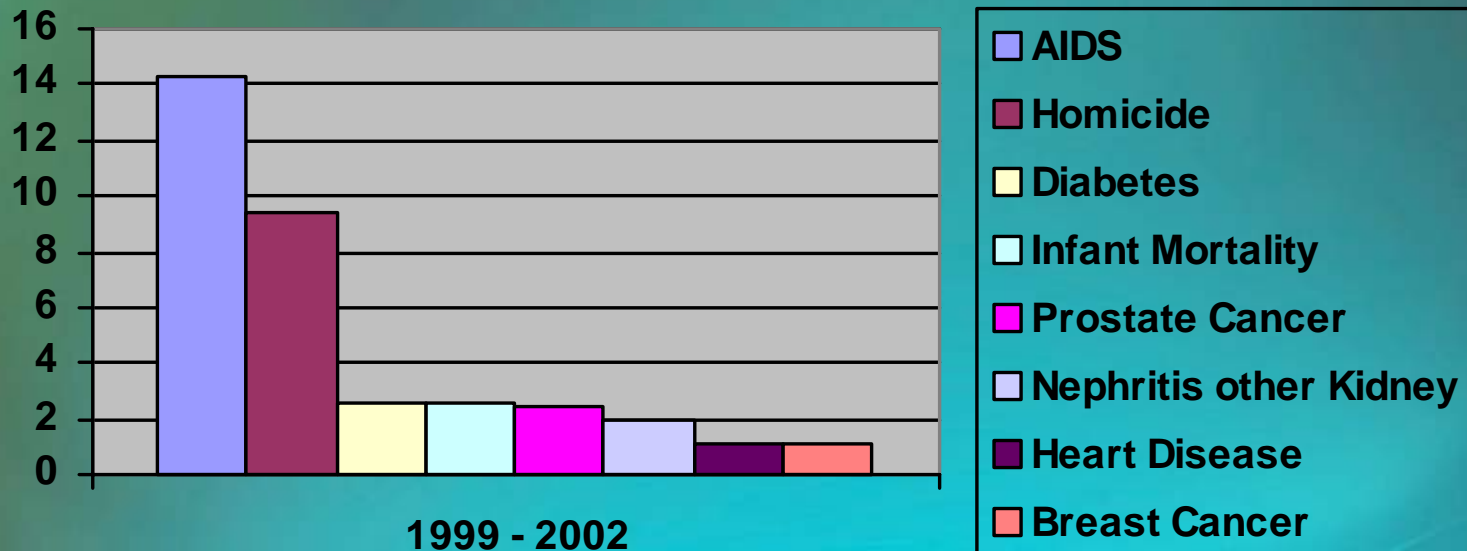


\*2004 incomplete – through November

Source: BCHC reports from Mitchell & McCormick Patient Management System

# Eliminating Disparities

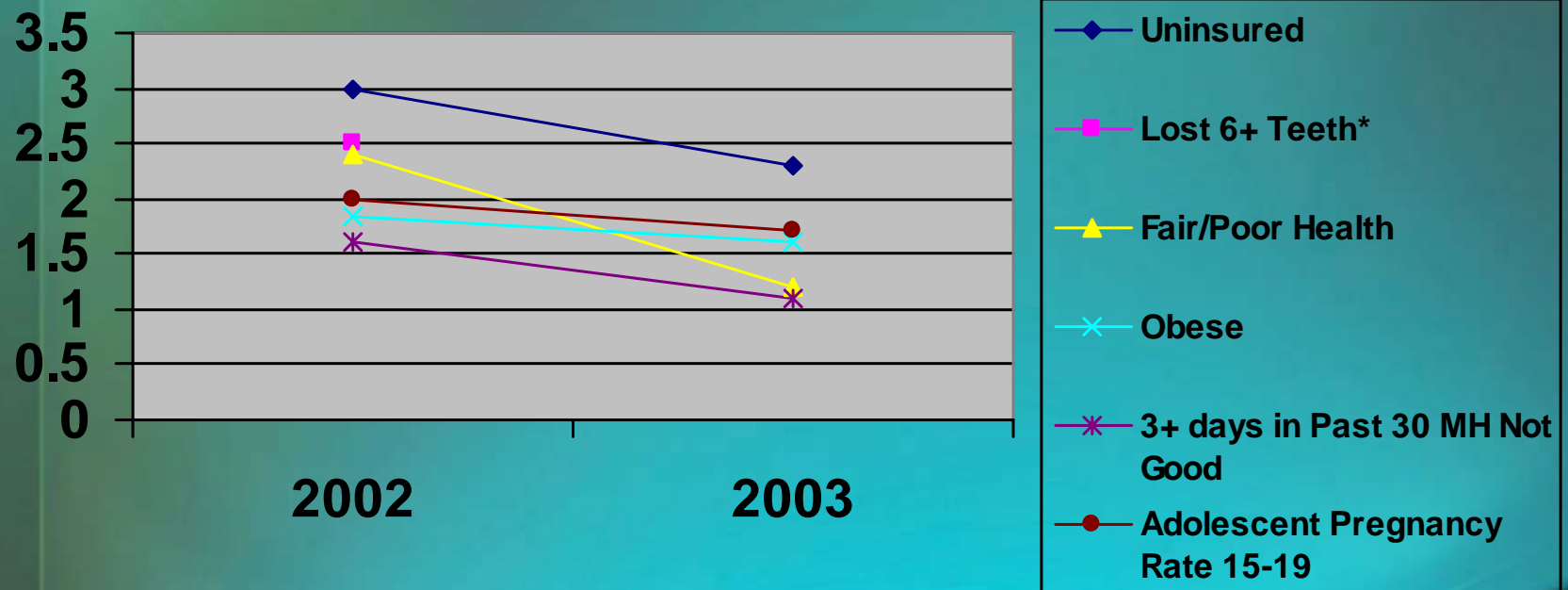
**Disparity Ratio**  
**Buncombe Minority Death Rates 1999-2002**



Source: NC DHHS State Center for Health Statistics

# Eliminating Disparities

## Disparity Ratio for Buncombe Minority Population: Behavioral Risk Factors



Source: NC BRFSS

# Eliminating Disparities

- Community Strategies
  - Asheville-Buncombe Institute of Parity Achievement (ABIPA)
  - ABC Kids – DSS
  - Latino Steering Committee



# Medication Assistance

## **FY 2004 Safety-Net Medication Assistance Programs\***

<b>Dollar Value of Medications</b>	<b>\$4,624,784</b>
<b>Patients Served</b>	<b>4,005</b>

\*Includes data for BCHC, Mission and ABCCM. Some variation in FY by site.

\*Additional medication assistance programs serve low-income residents, however data was not available for this report.

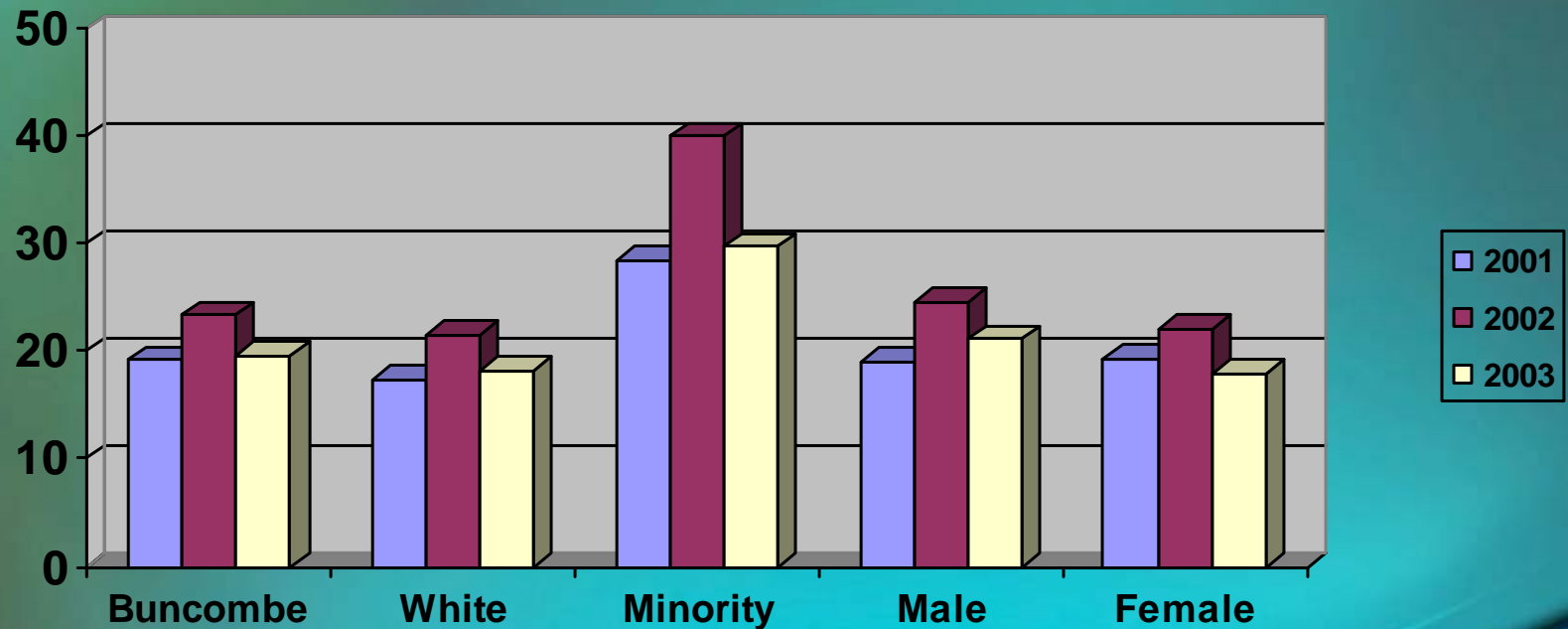
# Medication Assistance

- Community Strategies
  - Medication Assistance Task Force



# Emerging Issues: Obesity

**Adult Obesity: Buncombe County, 2001 - 2003**

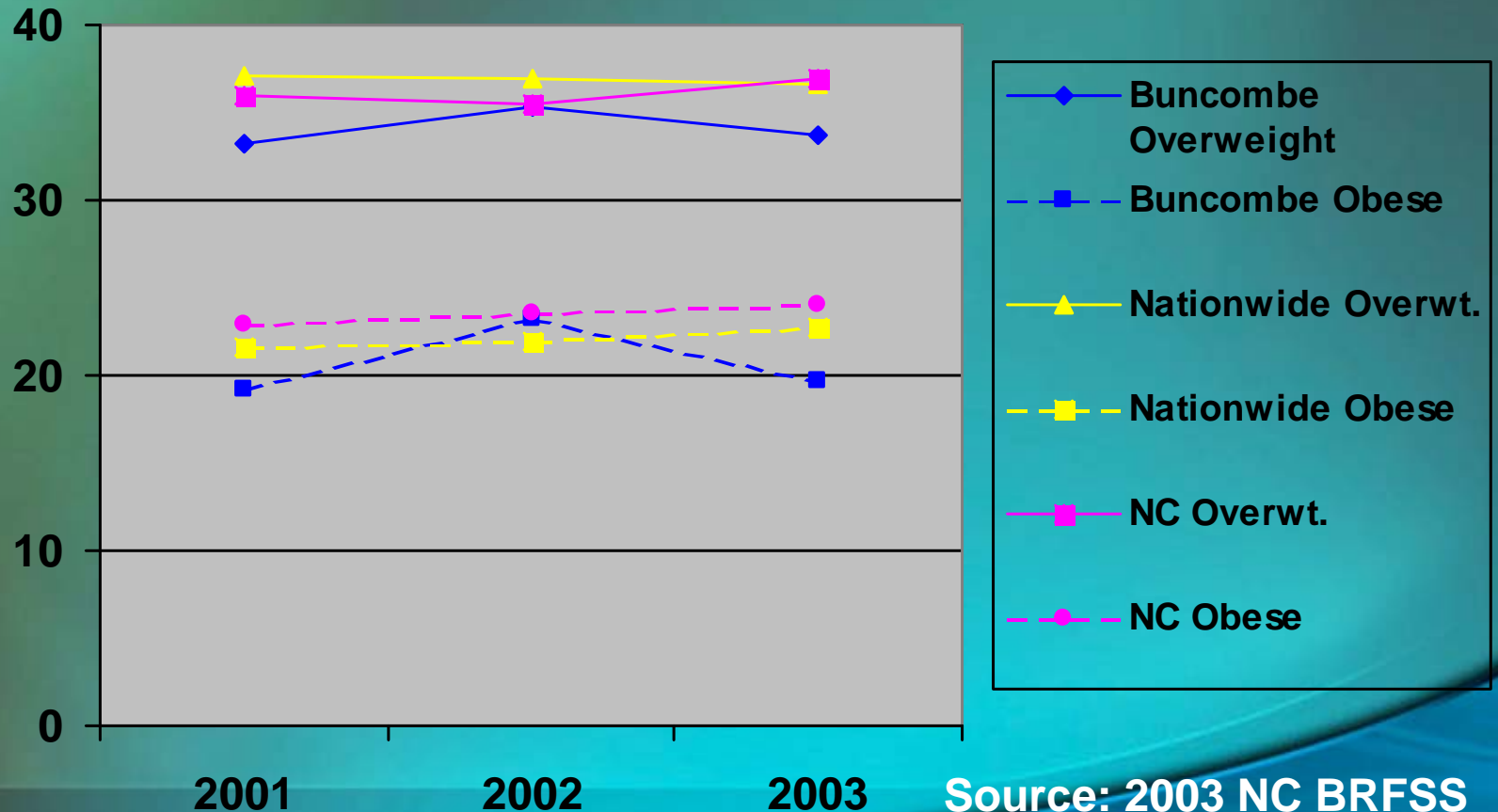


Source: NC BRFSS



# Emerging Issues: Obesity

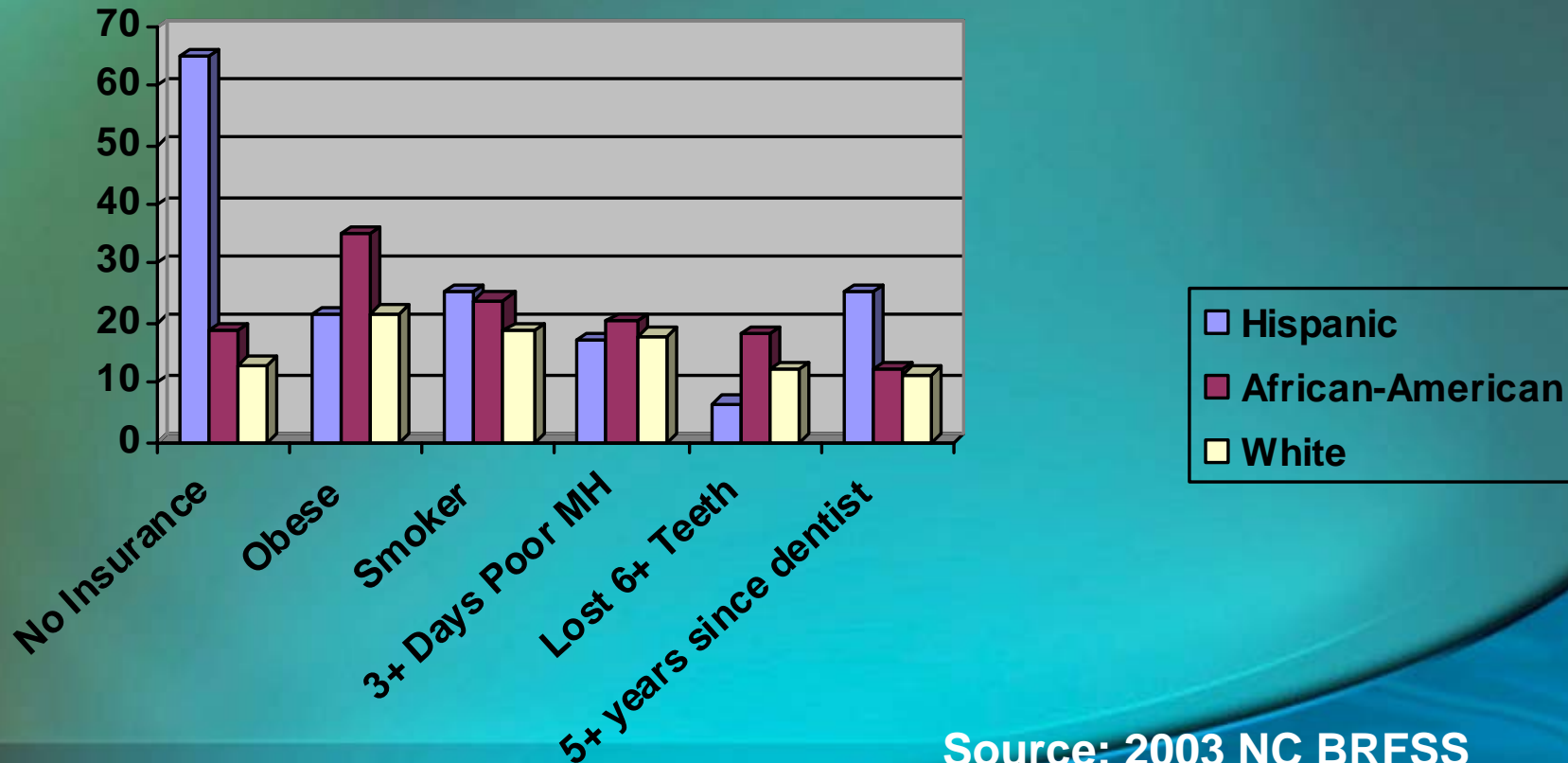
Percentage of Adults Ages 18-64 who are Overweight or Obese



Source: 2003 NC BRFSS

# Emerging Issues: Disparities

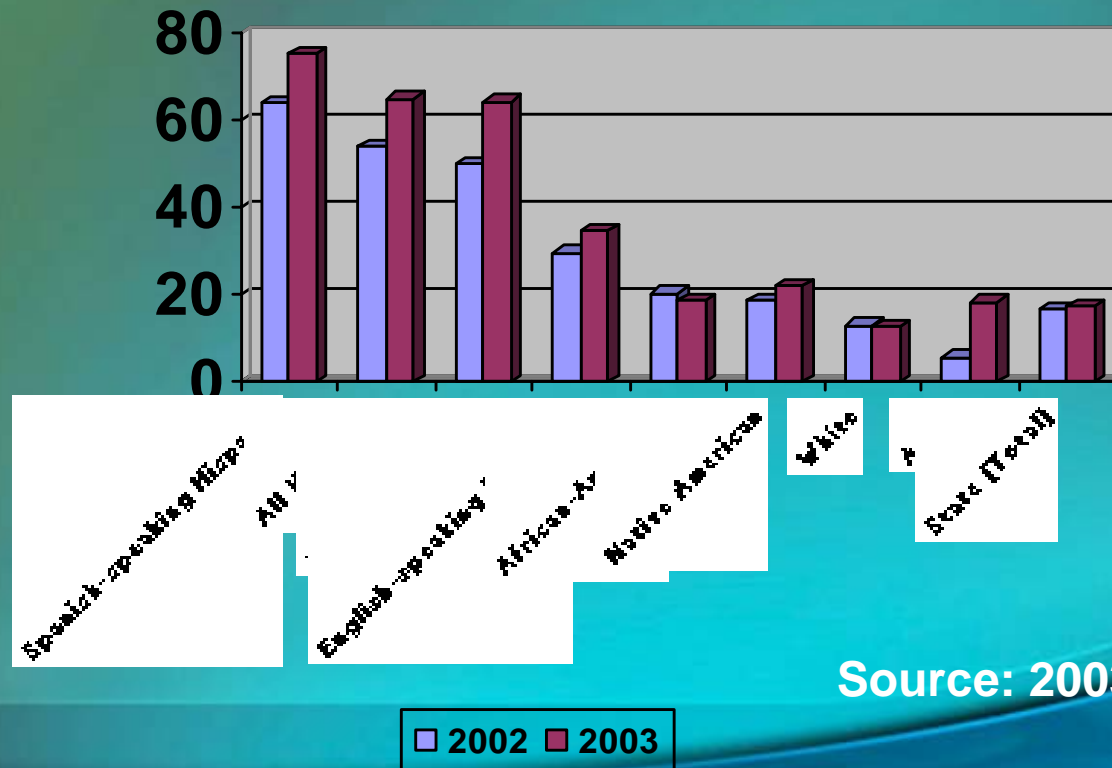
**Risk Factors by Race/Ethnicity:  
North Carolina Adults Ages 18 - 64**



Source: 2003 NC BRFSS

# Emerging Issues: Disparities

Percentage of North Carolinians with No Health Care Coverage, by Race/Ethnicity



Source: 2003 NC BRFSS

# Emerging Issues: Obesity

- Community Strategies
  - Healthy Buncombe Coalition
    - BMI data in elementary schools
    - Mini-grants to middle schools
    - ABC Let's Go program



# CHA 2005



# Summary of Data Sources

- Buncombe County Community Health Assessment (CHA 2000) Phone Survey
- Behavioral Risk Factor Surveillance System (BRFSS) Data
- North Carolina State Center for Health Statistics

# For More Information...

- Buncombe County Health Center  
(828) 250-5040
- HealthPartners  
(828) 253-7009