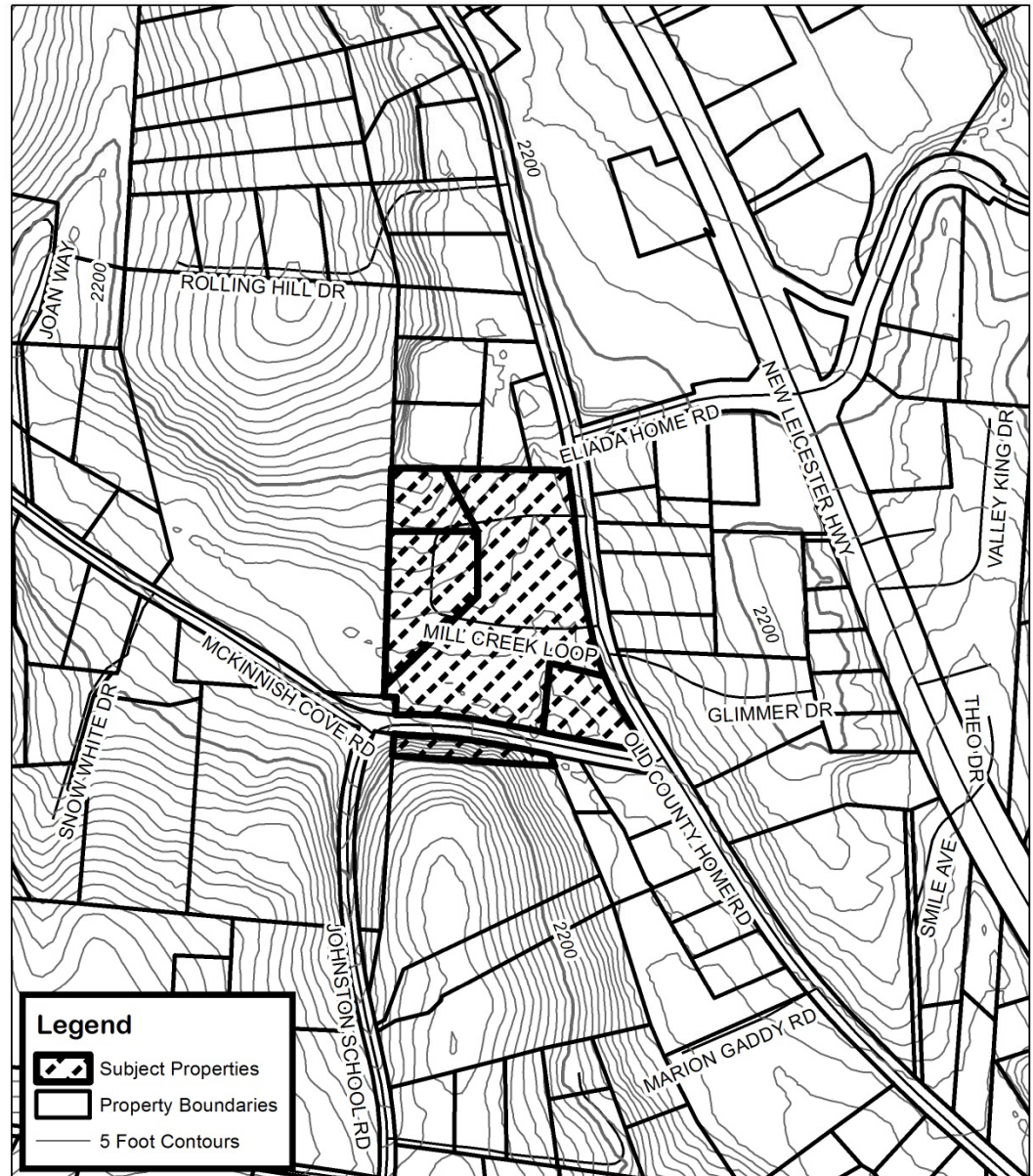





Mayfair Partners LLC

- Request R-2 from R-1
- Staff Recommendation:
 - Approval
- Planning Board Recommendation:
 - Approval

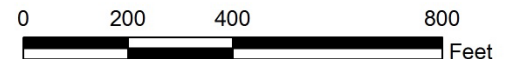


Legend

-  Subject Properties
-  Property Boundaries
-  5 Foot Contours

Mayfair Partners LLC Map Amendment

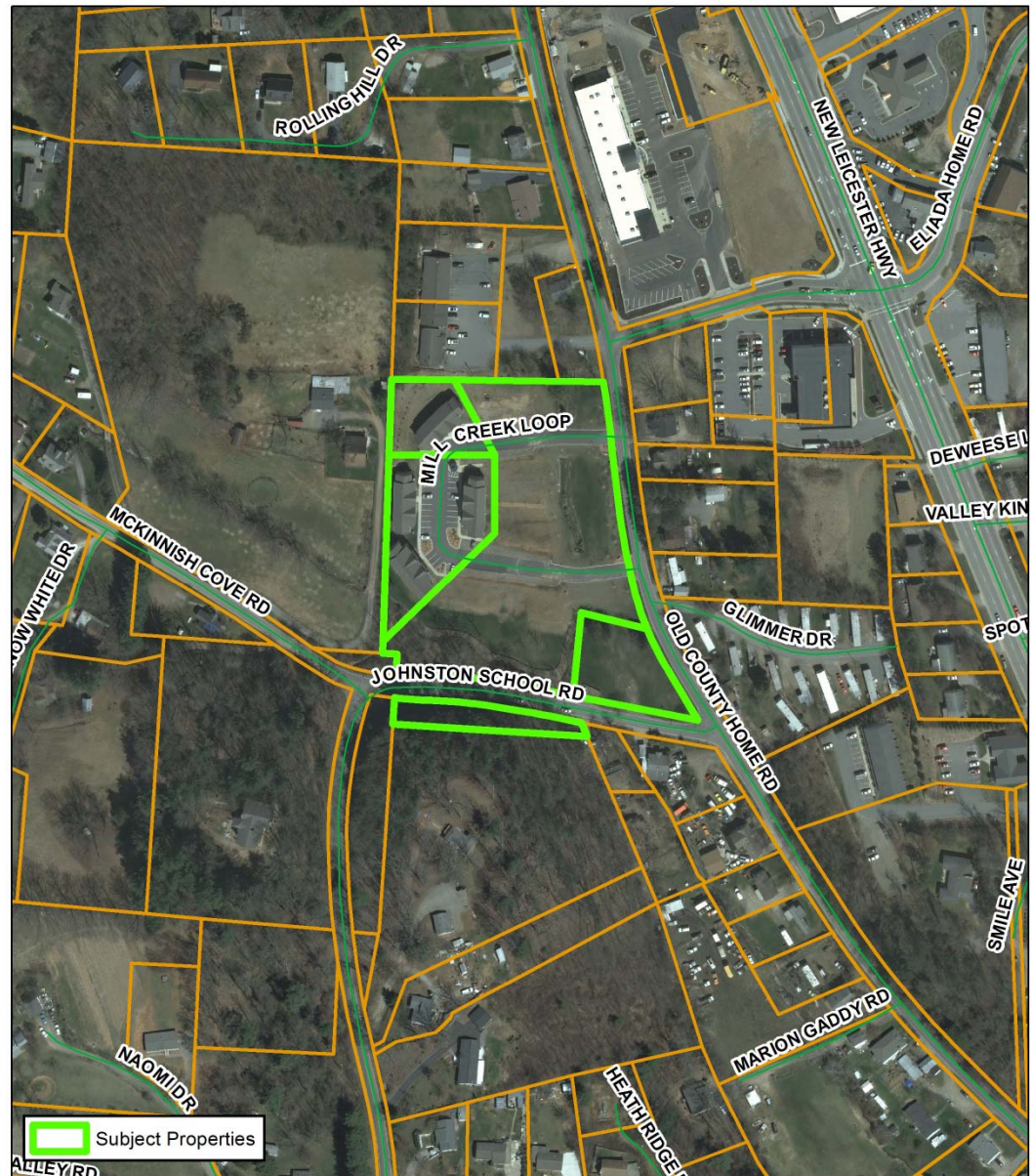
Case Number: ZPH2012-00053
Total Property Size: 5 acres
Application Date: September 18, 2012
Planning Board Hearing Date: November 5, 2012



Created By: Buncombe County Planning
Date: September 28, 2012

Mayfair Partners LLC

- Request R-2 from R-1
- Staff Recommendation:
 - Approval
- Planning Board Recommendation:
 - Approval



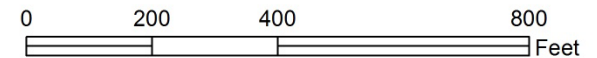
Mayfair Partners LLC Map Amendment

Case Number: ZPH2012-00053

Total Property Size: 5 acres

Application Date: September 18, 2012

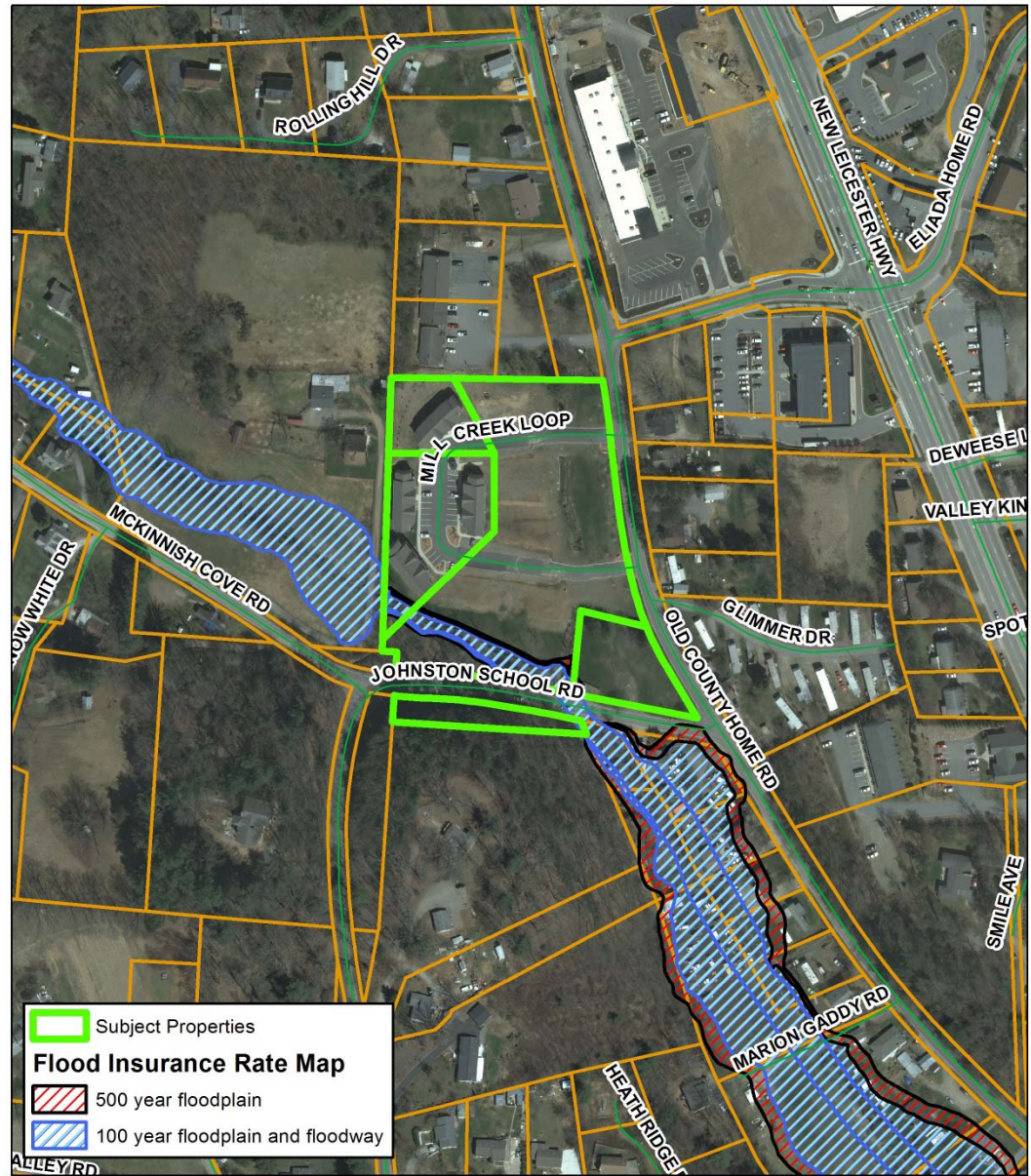
Planning Board Hearing Date: November 5, 2012



Created By: Buncombe County Planning
Date: September 28, 2012

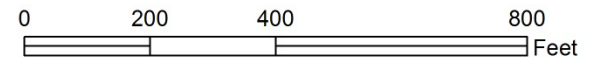
Mayfair Partners LLC

- Request R-2 from R-1
- Staff Recommendation:
 - Approval
- Planning Board Recommendation:
 - Approval



Mayfair Partners LLC Map Amendment

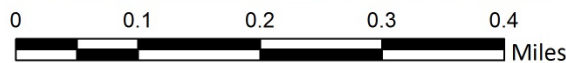
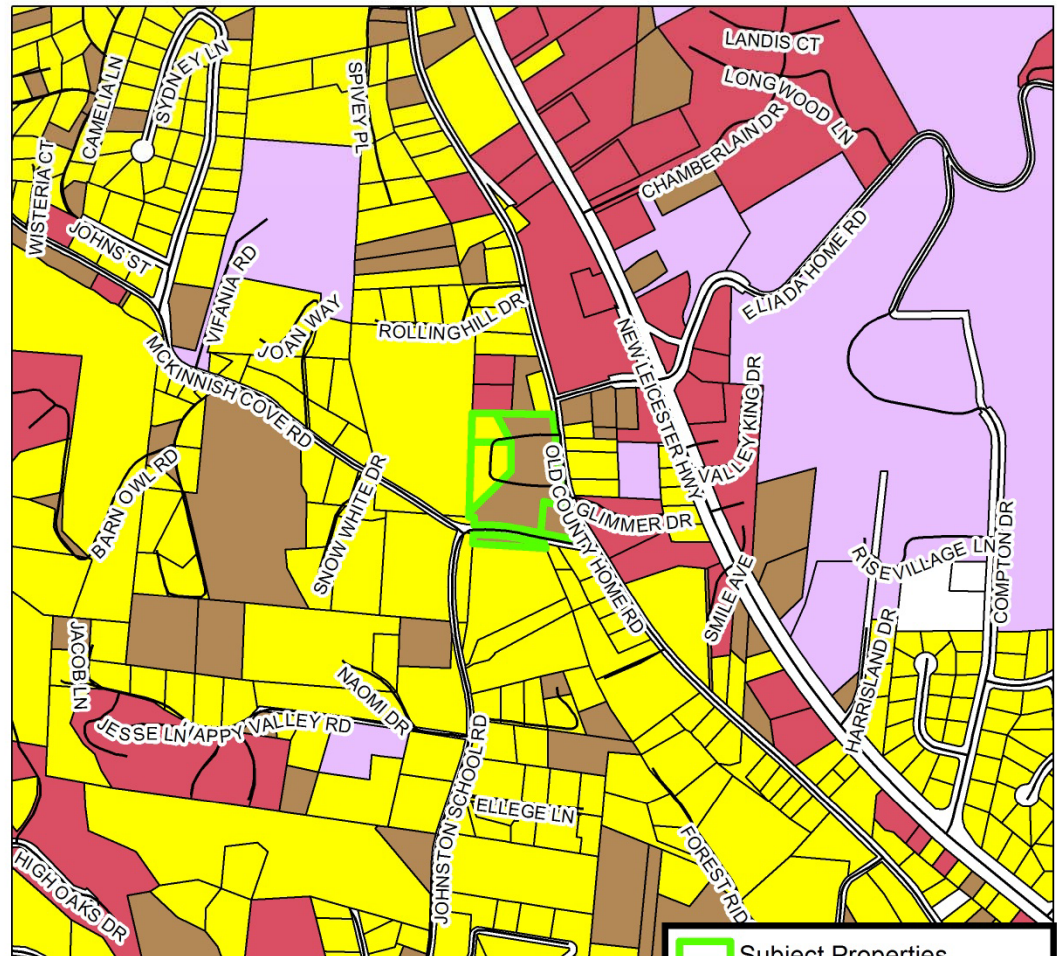
Case Number: ZPH2012-00053
Total Property Size: 5 acres
Application Date: September 18, 2012
Planning Board Hearing Date: November 5, 2012



Created By: Buncombe County Planning
Date: September 28, 2012

Mayfair Partners LLC

- Request R-2 from R-1
- Staff Recommendation:
 - Approval
- Planning Board Recommendation:
 - Approval



Mayfair Partners LLC Map Amendment



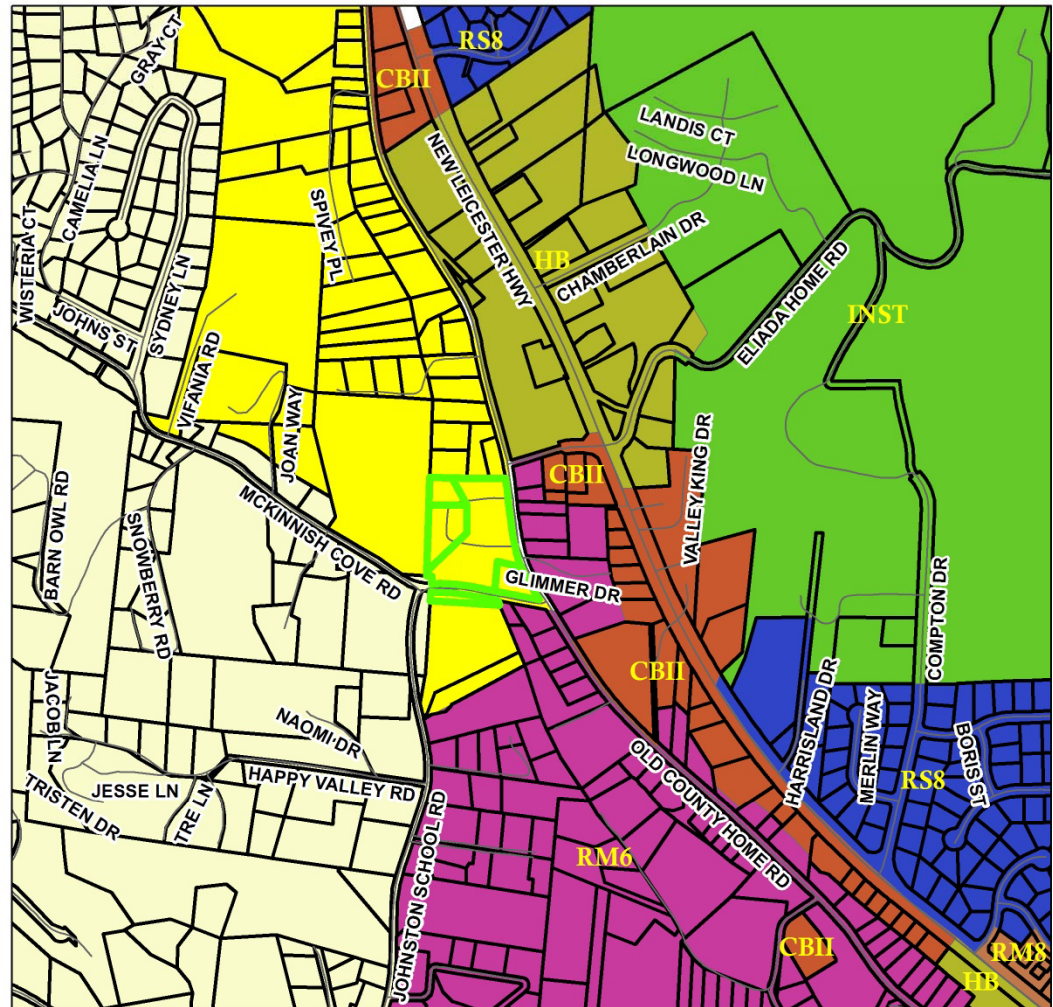
Case Number: ZPH2012-000053
 Total Property Size: 5 acres
 Application Date: September 18, 2012
 Planning Board Hearing Date: November 5, 2012

Created By: Buncombe County Planning
 Date: September 28, 2012



Mayfair Partners LLC

- Request R-2 from R-1
- Staff Recommendation:
 - Approval
- Planning Board Recommendation:
 - Approval

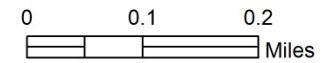


Mayfair Partners LLC Map Amendment



Zoning Districts		Zoning Overlays	
BDM	PS	Blue Ridge Parkway Overlay	Protected Ridge & Parkway
CS	R-1	Protected Ridge Overlay	Steep Slope/High Elev.
EMP	R-2	Steep Slope/High Elev. & Pkwy	
NS	R-3		
	R-LD		

Case Number: ZPH2012-00053
 Total Property Size: 5 acres
 Application Date: September 18, 2012
 Planning Board Hearing Date: November 5, 2012



Created By: Buncombe County Planning
 Date: September 28, 2012