

BUNCOMBE COUNTY GREENWAYS AND TRAILS MASTER PLAN UPDATE

- *Kinder
- *Greener
- *Smarter
- *Safer
- *Healthier



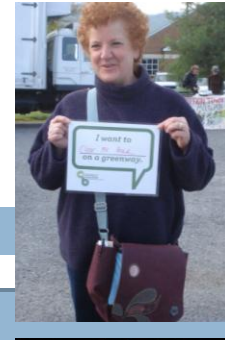
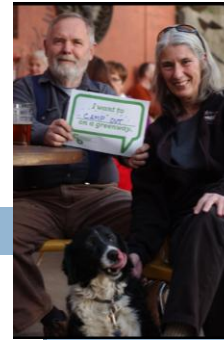
www.buncombecounty.org/connect

BUNCOMBE COUNTY PARKS GREENWAYS AND
RECREATION SERVICES

CONNECTED TO PARTNERS

□ Planning Partners

- The City of Asheville
- The Town of Black Mountain
- The Town of Biltmore Forest
- The Town of Montreat
- The Town of Weaverville
- The Town of Woodfin
- The Blue Ridge Parkway
- The Metropolitan Planning Organization



Components of Plan

CONNECTIVITY

MARKETING

LAND ACQUISITION PLAN

MAINTENANCE PLAN

PROGRAMS & EDUCATION

RECREATION AND CULTURE

SAFETY

FUNDING STRATEGIES



Relation to Buncombe County's Goals

- Supports the goals of Buncombe County's
 - Sustainability Plan
 - Land Use Plan
- Supports the Greenway Plans of:
 - The City of Asheville
 - The Town of Black Mt.
 - The Town of Woodfin
 - The Wilma Dykeman Riverway
- Is in line with the Land of Sky Regional County of Government's
 - Blue Ridge Parkway Plan



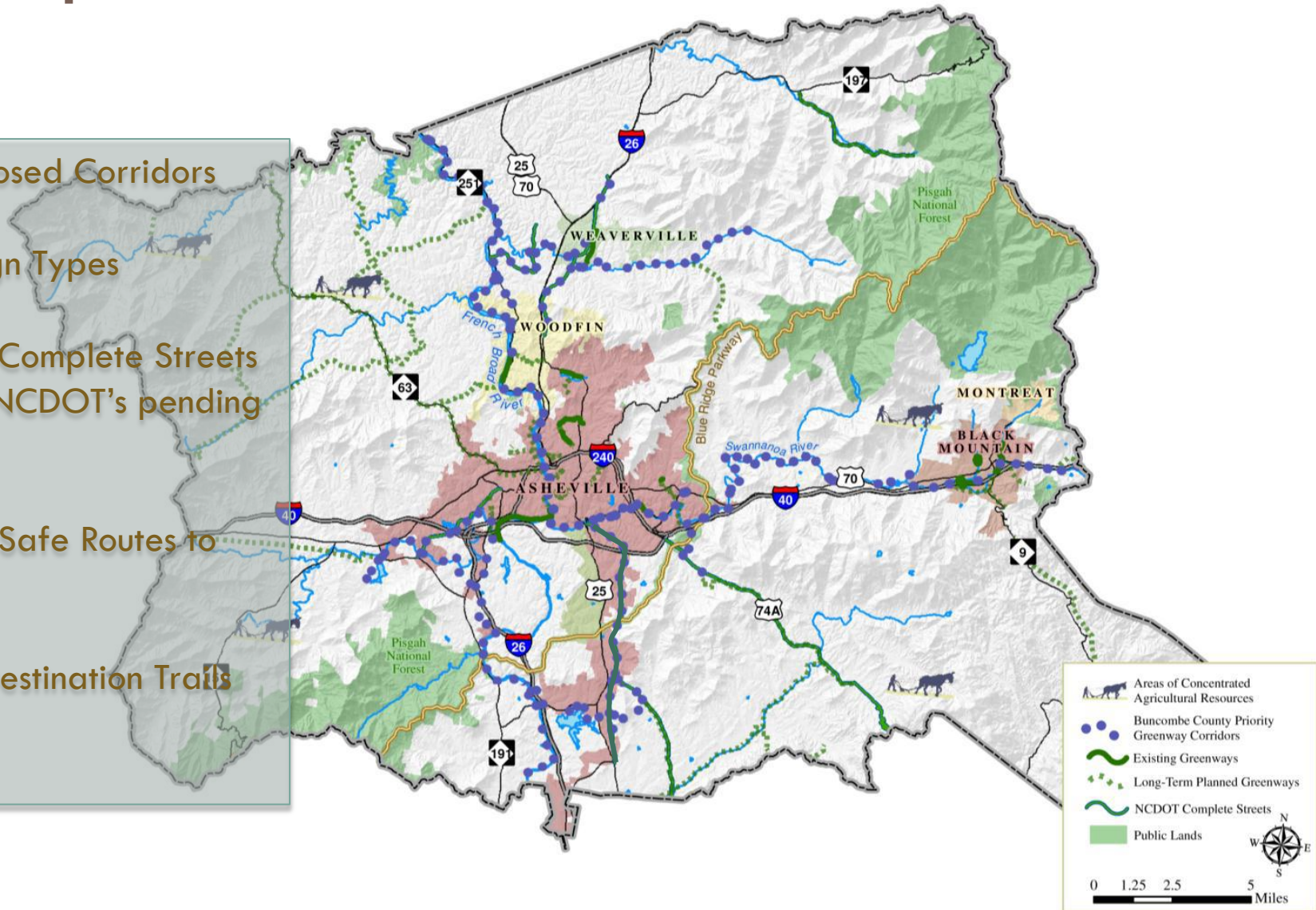
Outreach methods

- 2,600 Input Contacts
 - ▣ Initial online survey
 - ▣ 2 day Stakeholder Workshops
 - ▣ 7 Preliminary Meetings
 - ▣ 4 Intermediate Meetings
 - ▣ Extensive Outreach at Public Events and Speaking Engagements
 - ▣ The “Greenways Please” photo campaign

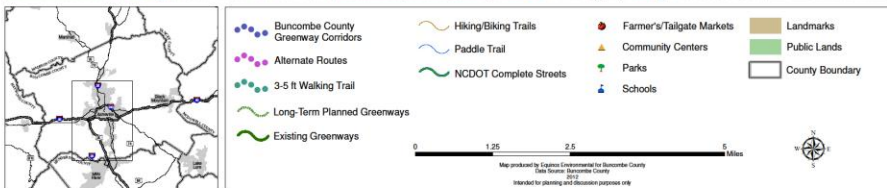
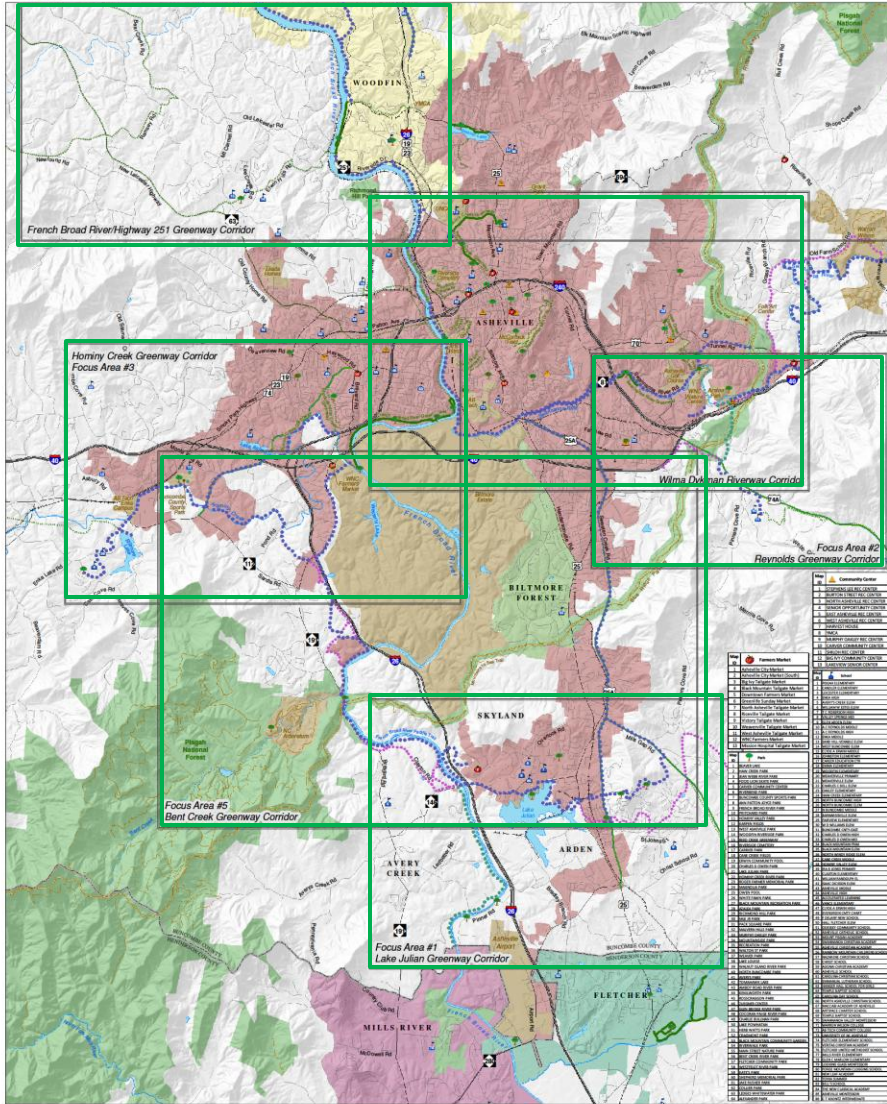


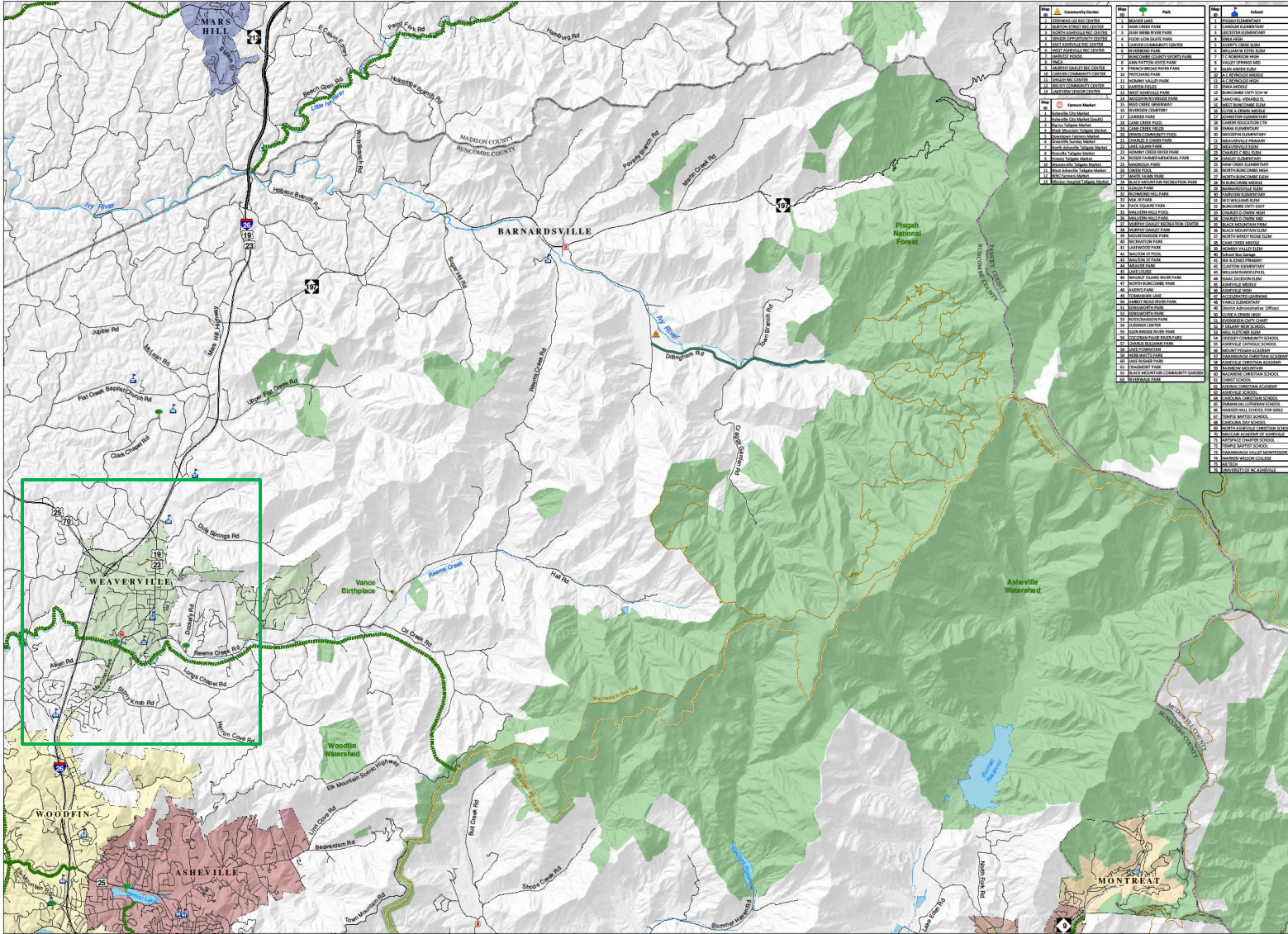
Proposed corridors and areas

- 8 Proposed Corridors
- 4 Design Types
- Use of Complete Streets (as per NCDOT's pending policies)
- Use of Safe Routes to Schools
- Rural Destination Trails



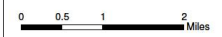
Central Buncombe



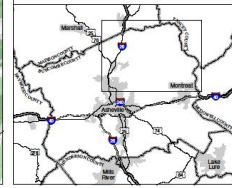


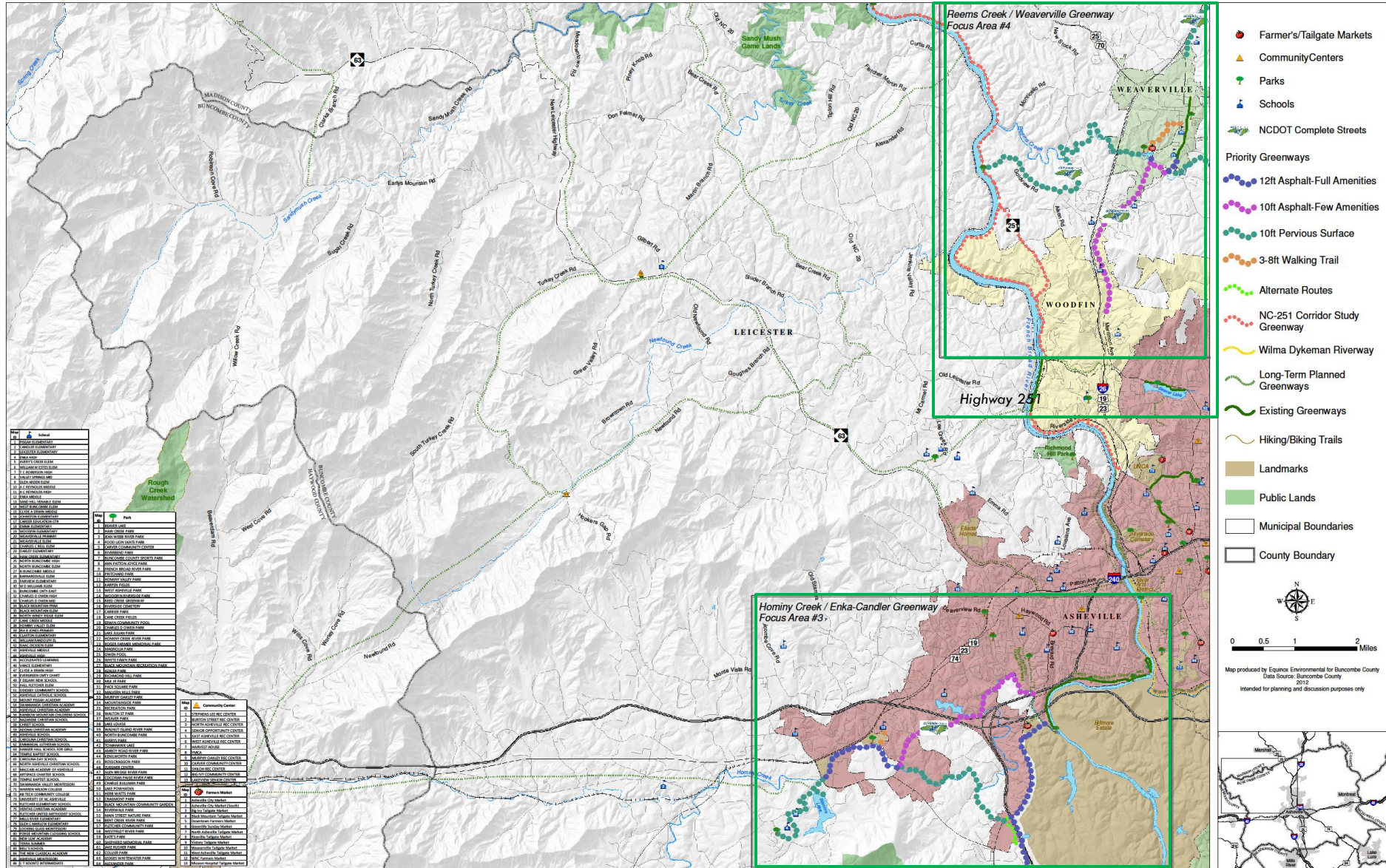
Area	Name	Area	Name
Community Center	1. BARNARDSVILLE COMMUNITY CENTER	Park	1. BARNARDSVILLE PARK
	2. BARNARDSVILLE COMMUNITY CENTER		2. BARNARDSVILLE PARK
	3. BARNARDSVILLE COMMUNITY CENTER		3. BARNARDSVILLE PARK
	4. BARNARDSVILLE COMMUNITY CENTER		4. BARNARDSVILLE PARK
	5. BARNARDSVILLE COMMUNITY CENTER		5. BARNARDSVILLE PARK
	6. BARNARDSVILLE COMMUNITY CENTER		6. BARNARDSVILLE PARK
	7. BARNARDSVILLE COMMUNITY CENTER		7. BARNARDSVILLE PARK
	8. BARNARDSVILLE COMMUNITY CENTER		8. BARNARDSVILLE PARK
	9. BARNARDSVILLE COMMUNITY CENTER		9. BARNARDSVILLE PARK
	10. BARNARDSVILLE COMMUNITY CENTER		10. BARNARDSVILLE PARK
	11. BARNARDSVILLE COMMUNITY CENTER		11. BARNARDSVILLE PARK
	12. BARNARDSVILLE COMMUNITY CENTER		12. BARNARDSVILLE PARK
	13. BARNARDSVILLE COMMUNITY CENTER		13. BARNARDSVILLE PARK
	14. BARNARDSVILLE COMMUNITY CENTER		14. BARNARDSVILLE PARK
	15. BARNARDSVILLE COMMUNITY CENTER		15. BARNARDSVILLE PARK
Farmers Market	1. BARNARDSVILLE FARMERS MARKET	School	1. BARNARDSVILLE SCHOOL
	2. BARNARDSVILLE FARMERS MARKET		2. BARNARDSVILLE SCHOOL
	3. BARNARDSVILLE FARMERS MARKET		3. BARNARDSVILLE SCHOOL
	4. BARNARDSVILLE FARMERS MARKET		4. BARNARDSVILLE SCHOOL
	5. BARNARDSVILLE FARMERS MARKET		5. BARNARDSVILLE SCHOOL
	6. BARNARDSVILLE FARMERS MARKET		6. BARNARDSVILLE SCHOOL
	7. BARNARDSVILLE FARMERS MARKET		7. BARNARDSVILLE SCHOOL
	8. BARNARDSVILLE FARMERS MARKET		8. BARNARDSVILLE SCHOOL
	9. BARNARDSVILLE FARMERS MARKET		9. BARNARDSVILLE SCHOOL
	10. BARNARDSVILLE FARMERS MARKET		10. BARNARDSVILLE SCHOOL
	11. BARNARDSVILLE FARMERS MARKET		11. BARNARDSVILLE SCHOOL
	12. BARNARDSVILLE FARMERS MARKET		12. BARNARDSVILLE SCHOOL
	13. BARNARDSVILLE FARMERS MARKET		13. BARNARDSVILLE SCHOOL
	14. BARNARDSVILLE FARMERS MARKET		14. BARNARDSVILLE SCHOOL
	15. BARNARDSVILLE FARMERS MARKET		15. BARNARDSVILLE SCHOOL

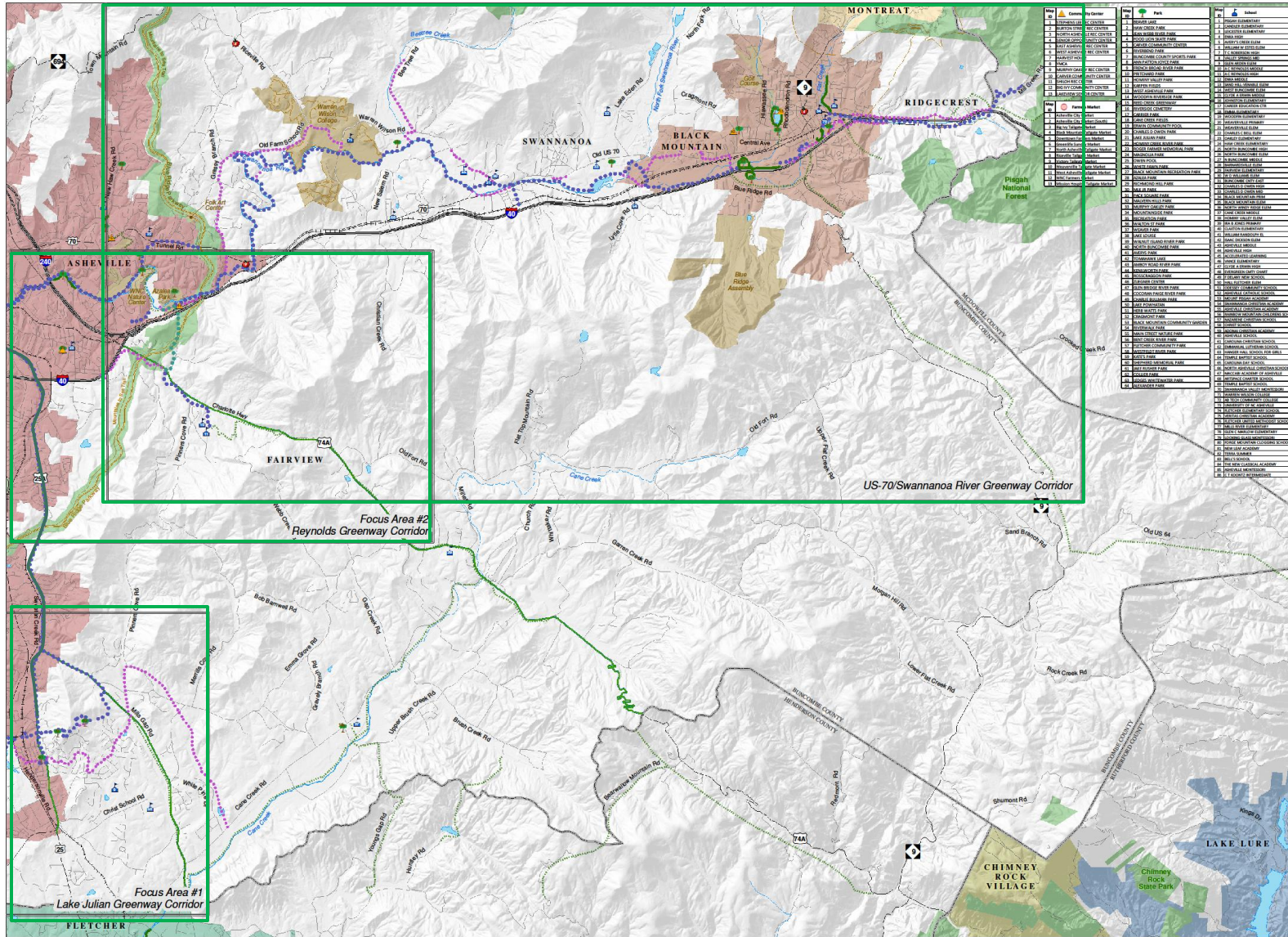
- Farmers Markets
- Community Centers
- Parks
- Schools
- Hiking Trails
- Existing Greenways
- Proposed Greenways
- Streams
- Blue Ridge Parkway
- Interstate
- US Highway
- NC Highway
- Landmarks
- Natural & Protected Areas
- County Boundary
- Municipal Boundaries



Map produced by Equinox Environmental for Buncombe County
 Data Source: Buncombe County 2011
 Intended for planning and discussion purposes only

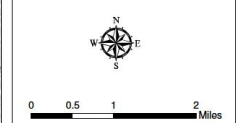






Key	Symbol	Description
▲	Community Center	Community Center
●	Farmer's/Tailgate Markets	Farmer's/Tailgate Markets
●	Park	Park
●	School	School
●	Landmark	Landmark
■	Public Land	Public Land
□	County Boundary	County Boundary
●	US-70/Swannanoa River Greenway Corridor	US-70/Swannanoa River Greenway Corridor
●	Reynolds Greenway Corridor	Reynolds Greenway Corridor
●	Lake Julian Greenway Corridor	Lake Julian Greenway Corridor
●	3-5 ft Walking Trail	3-5 ft Walking Trail
●	Alternate Routes	Alternate Routes
●	Long-Term Planned Greenways	Long-Term Planned Greenways
●	Existing Greenways	Existing Greenways
●	Hiking/Biking Trails	Hiking/Biking Trails
●	NCDOT Complete Streets	NCDOT Complete Streets

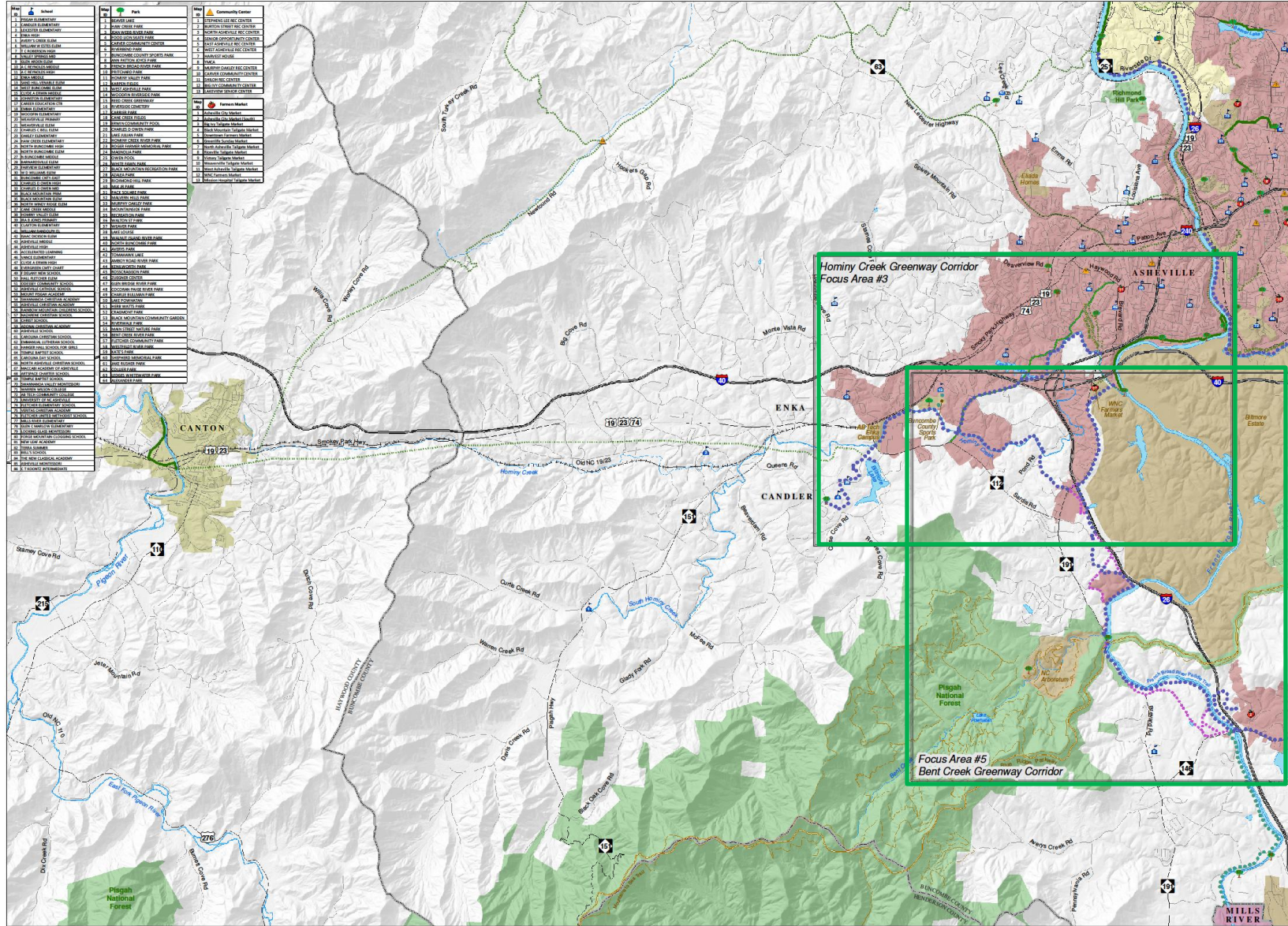
- Farmer's/Tailgate Markets
- ▲ Community Centers
- Parks
- Schools
- Buncombe County Greenway Corridor
- 3-5 ft Walking Trail
- Alternate Routes
- Long-Term Planned Greenways
- Existing Greenways
- Hiking/Biking Trails
- NCDOT Complete Streets
- Landmarks
- Public Lands
- County Boundary



Map produced by Equinox Environmental for Buncombe County
 Data Source: Buncombe County 2012
 Intended for planning and discussion purposes only

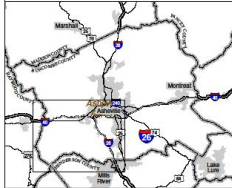


Map	School	Park	Community Center
1	1	1	1
2	2	2	2
3	3	3	3
4	4	4	4
5	5	5	5
6	6	6	6
7	7	7	7
8	8	8	8
9	9	9	9
10	10	10	10
11	11	11	11
12	12	12	12
13	13	13	13
14	14	14	14
15	15	15	15
16	16	16	16
17	17	17	17
18	18	18	18
19	19	19	19
20	20	20	20
21	21	21	21
22	22	22	22
23	23	23	23
24	24	24	24
25	25	25	25
26	26	26	26
27	27	27	27
28	28	28	28
29	29	29	29
30	30	30	30
31	31	31	31
32	32	32	32
33	33	33	33
34	34	34	34
35	35	35	35
36	36	36	36
37	37	37	37
38	38	38	38
39	39	39	39
40	40	40	40
41	41	41	41
42	42	42	42
43	43	43	43
44	44	44	44
45	45	45	45
46	46	46	46
47	47	47	47
48	48	48	48
49	49	49	49
50	50	50	50
51	51	51	51
52	52	52	52
53	53	53	53
54	54	54	54
55	55	55	55
56	56	56	56
57	57	57	57
58	58	58	58
59	59	59	59
60	60	60	60
61	61	61	61
62	62	62	62
63	63	63	63
64	64	64	64
65	65	65	65
66	66	66	66
67	67	67	67
68	68	68	68
69	69	69	69
70	70	70	70
71	71	71	71
72	72	72	72
73	73	73	73
74	74	74	74
75	75	75	75
76	76	76	76
77	77	77	77
78	78	78	78
79	79	79	79
80	80	80	80
81	81	81	81
82	82	82	82
83	83	83	83
84	84	84	84
85	85	85	85
86	86	86	86
87	87	87	87
88	88	88	88
89	89	89	89
90	90	90	90
91	91	91	91
92	92	92	92
93	93	93	93
94	94	94	94
95	95	95	95
96	96	96	96
97	97	97	97
98	98	98	98
99	99	99	99
100	100	100	100



- Farmer's/Tailgate Markets
- Community Centers
- Parks
- Schools
- Buncombe County Greenway Corridor
- 3-5 ft Walking Trail
- Alternate Routes
- Long-Term Planned Greenways
- Existing Greenways
- Hiking/Biking Trails
- NCDOT Complete Streets
- Landmarks
- Public Lands
- County Boundary

Map produced by Equinox Environmental for Buncombe County
 Data Source: Buncombe County 2012
 Intended for planning and discussion purposes only



Action steps

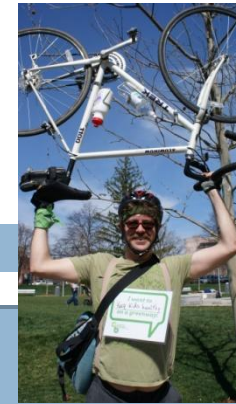
Cultivate Existing Partnerships and Identify New Partners

Identify Strategic Grant Opportunities

Secure Local Funding Commitments

Create a Landowner Outreach Program

Pursue Conservation Through Ordinances and Alliances



Action steps

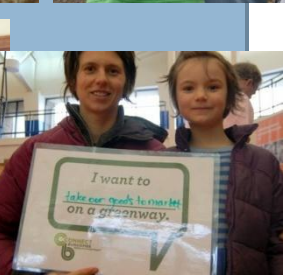
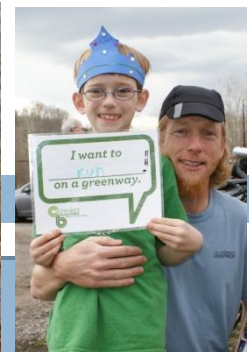
Amend Ordinances to Support Greenways

Conduct Detailed Plans for Priority Corridors

Develop Standards and Specifics for Greenways

Organize a Greenway Training Program

Evaluate Performance



Funding

- ❑ Cost estimates are not comprehensive. They can only estimate the known costs.
- ❑ We are not “shovel ready”. Additional considerations need to be made to determine the most feasible phases of the corridors where we should begin.
- ❑ Next steps will rely on guidance of the elected body and County management.



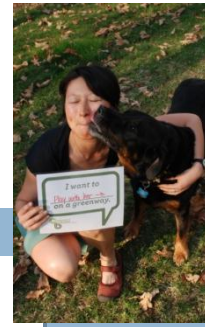
Next Steps

Develop our Friends Groups =
Connect Buncombe

Conduct Feasibility Studies and
Site Plans for Corridors

Begin a Fundraising Plan

Seek Grants with our Planning
Partners

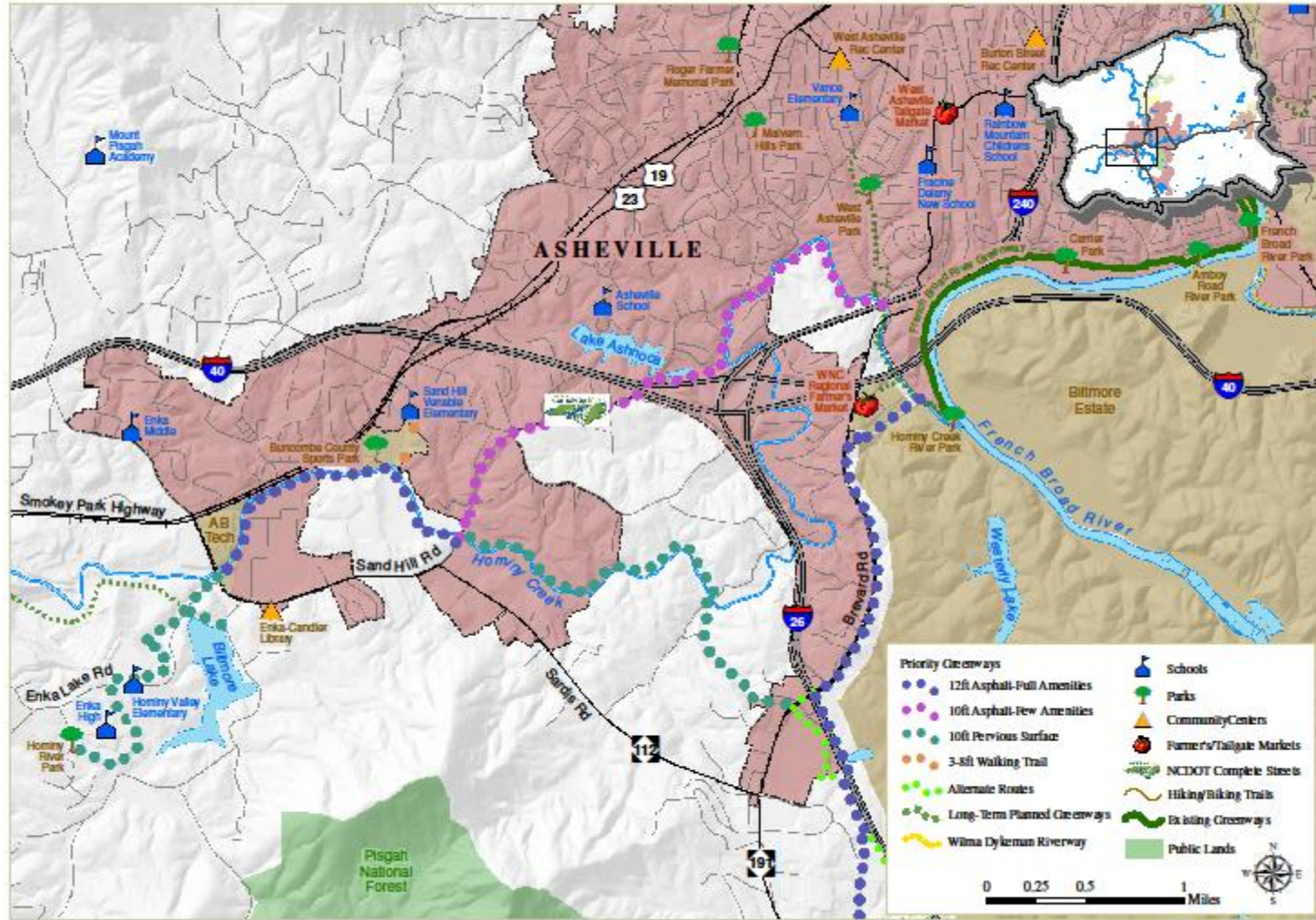


Questions and Comments



Focus Area #3 - Hominy Creek / Enka-Candler Greenway

DRAFT



Central Quad Here



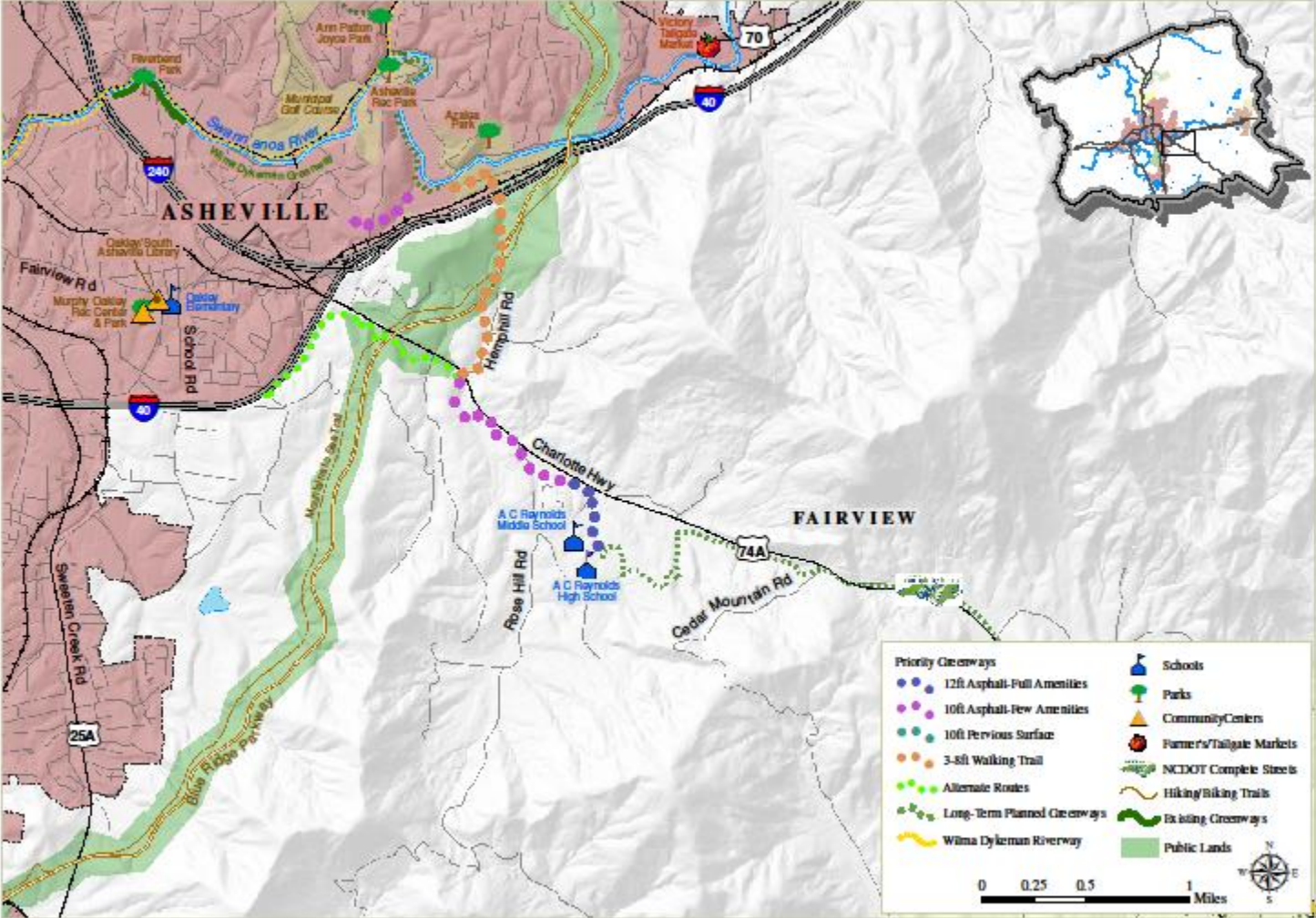
NW Quad Here

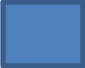


SW Quad Here

Focus Area #2 - Azalea Park to Fairview Greenway

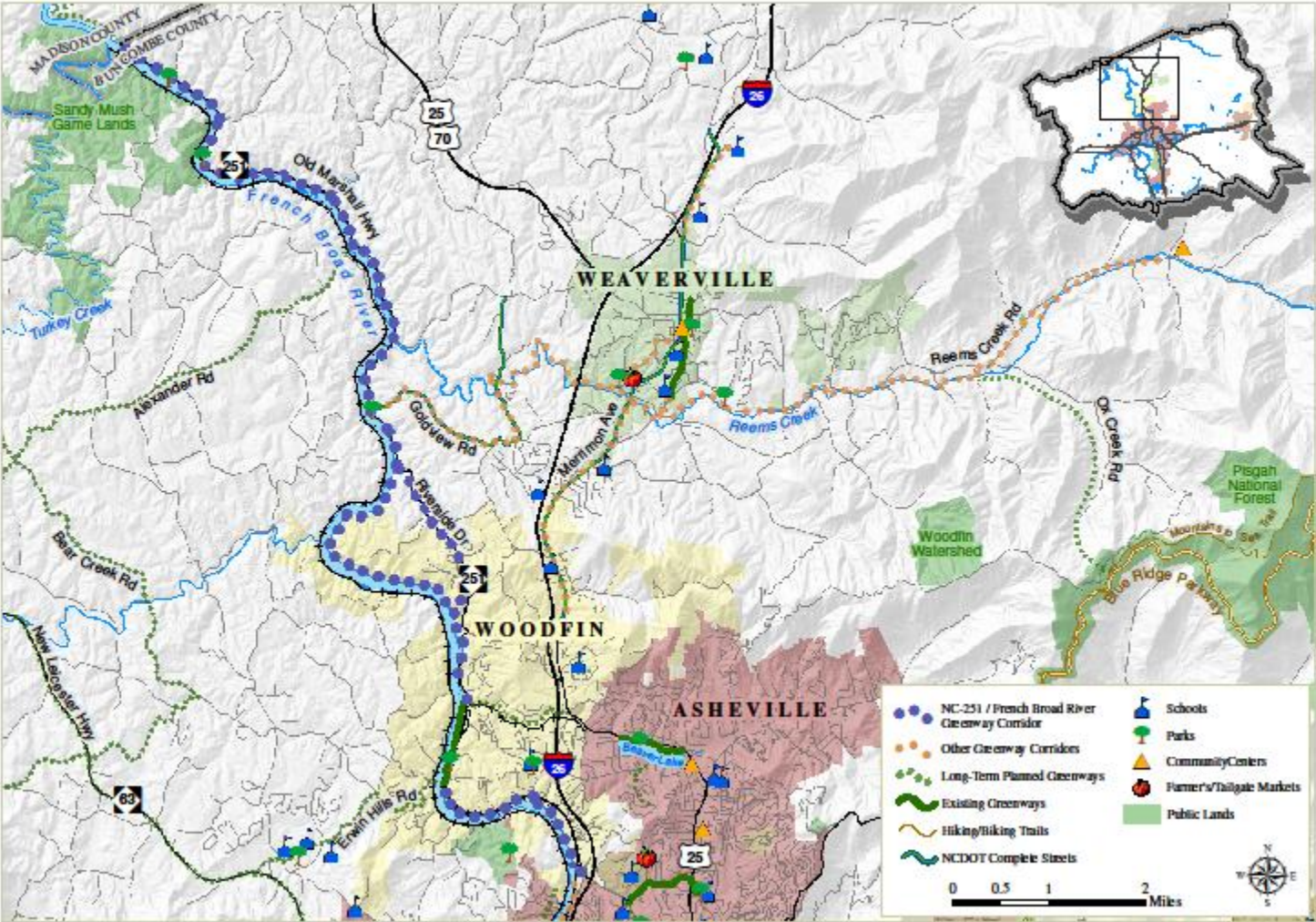
DRAFT



 To Central Quad

 To SE Quad

Highway 251/French Broad River

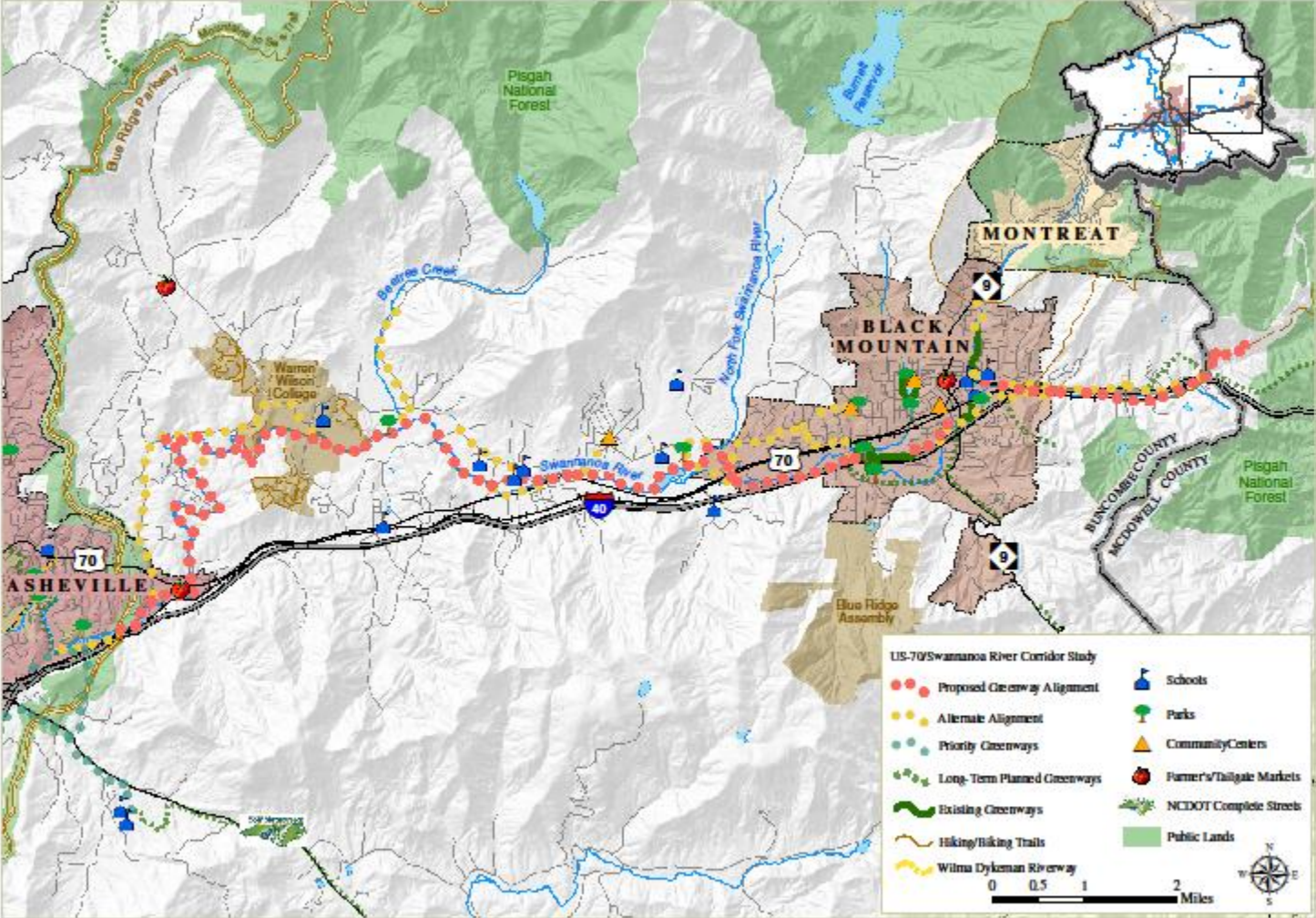


Central Quad

NW Quad Here

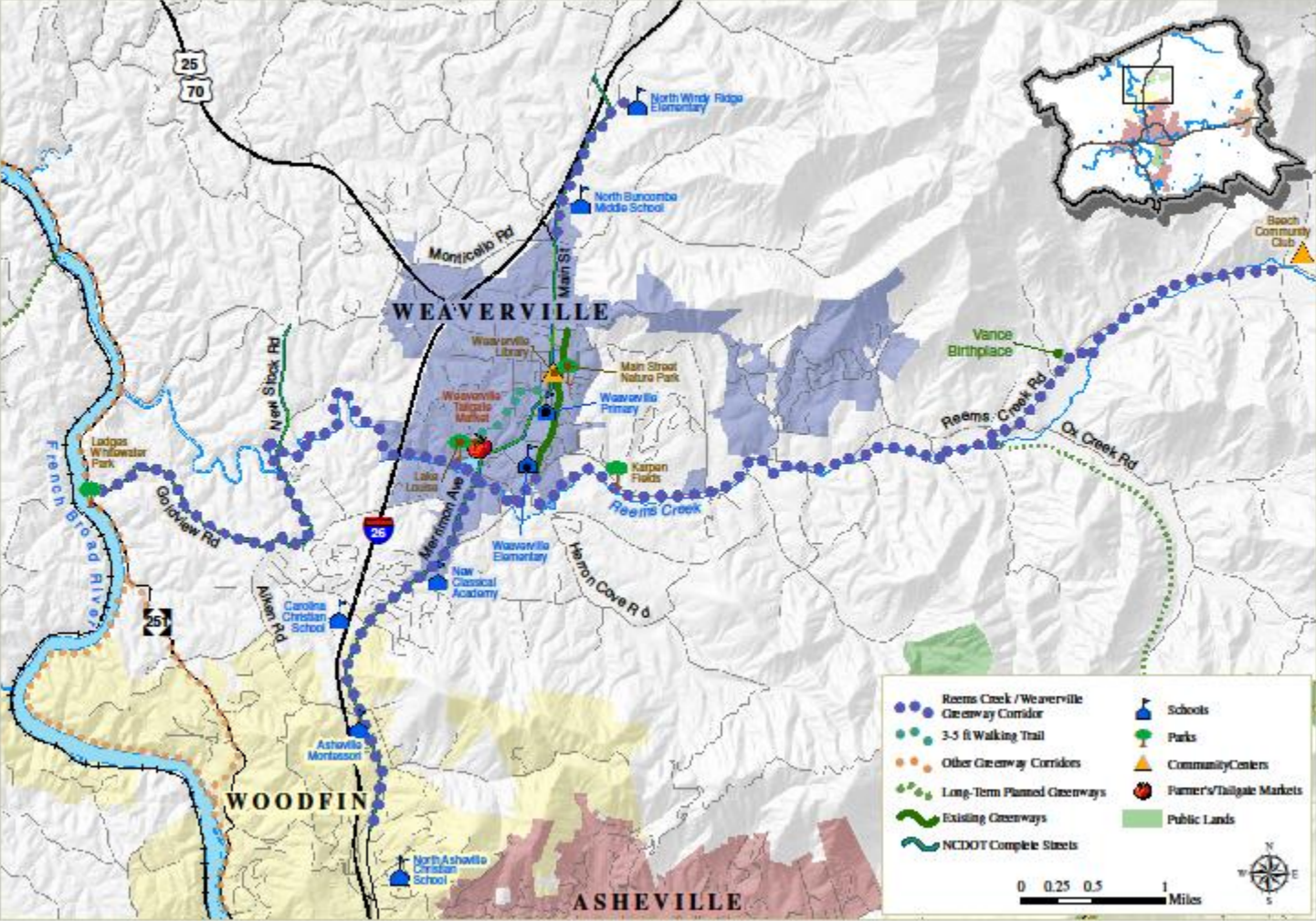
US 70 / Swannanoa River Greenway

DRAFT



SE Quad Here

Weaverville/Reems Creek

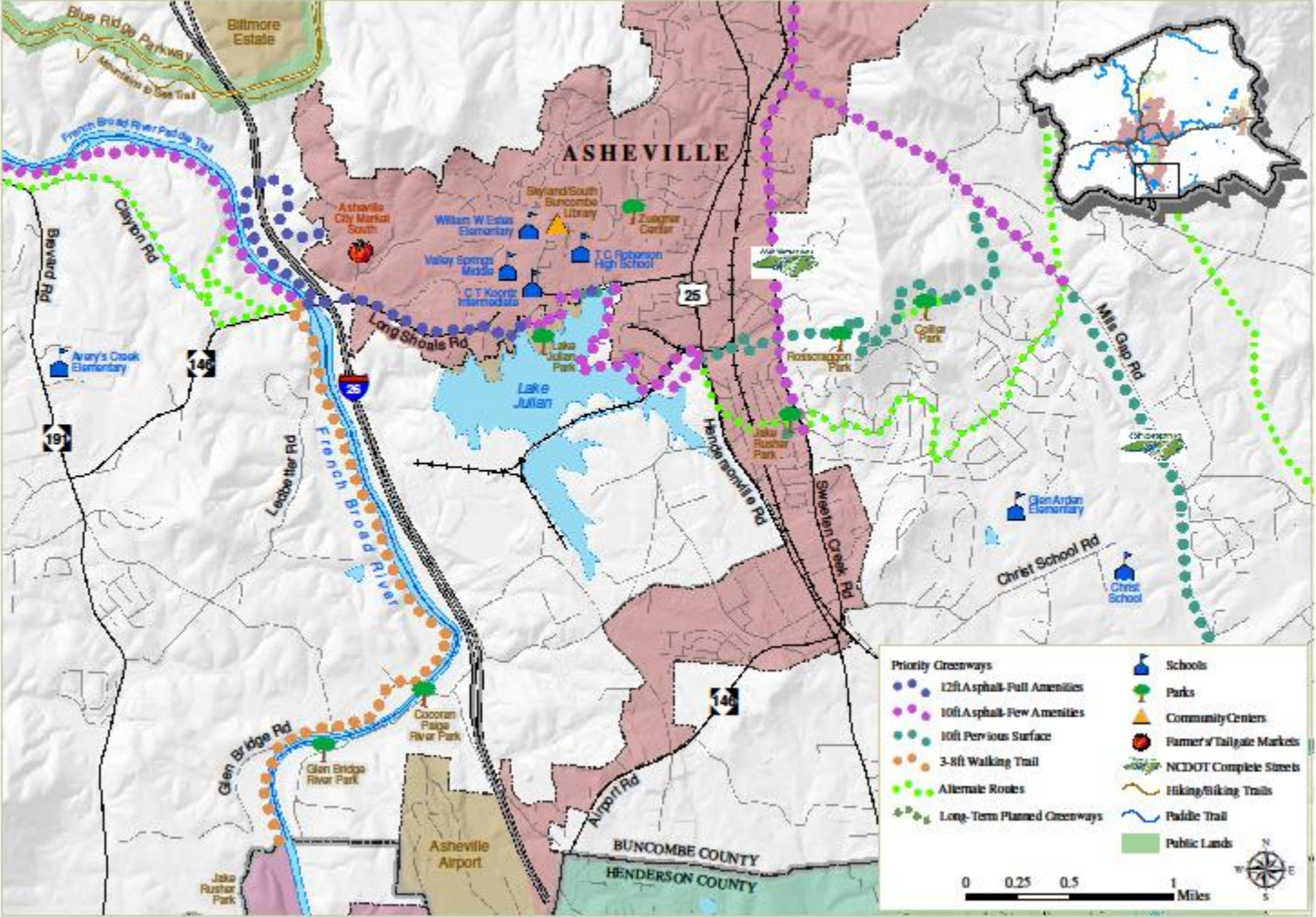


NW Quad

NE Quad

Focus Area #1 - Arden / Lake Julian Greenway

DRAFT

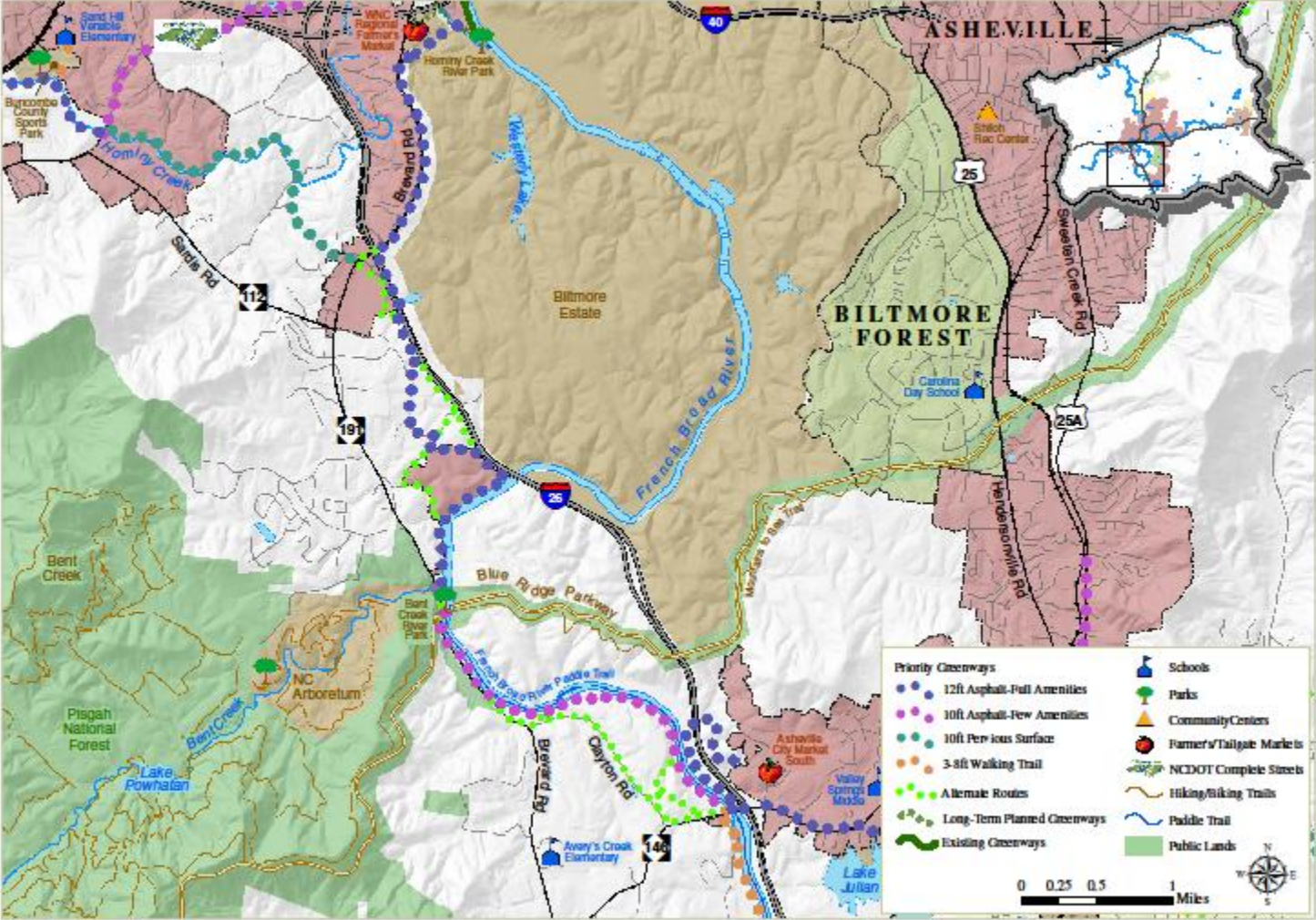


Central Quad

SE Quad

Focus Area #5 - West Asheville to Bent Creek Greenway

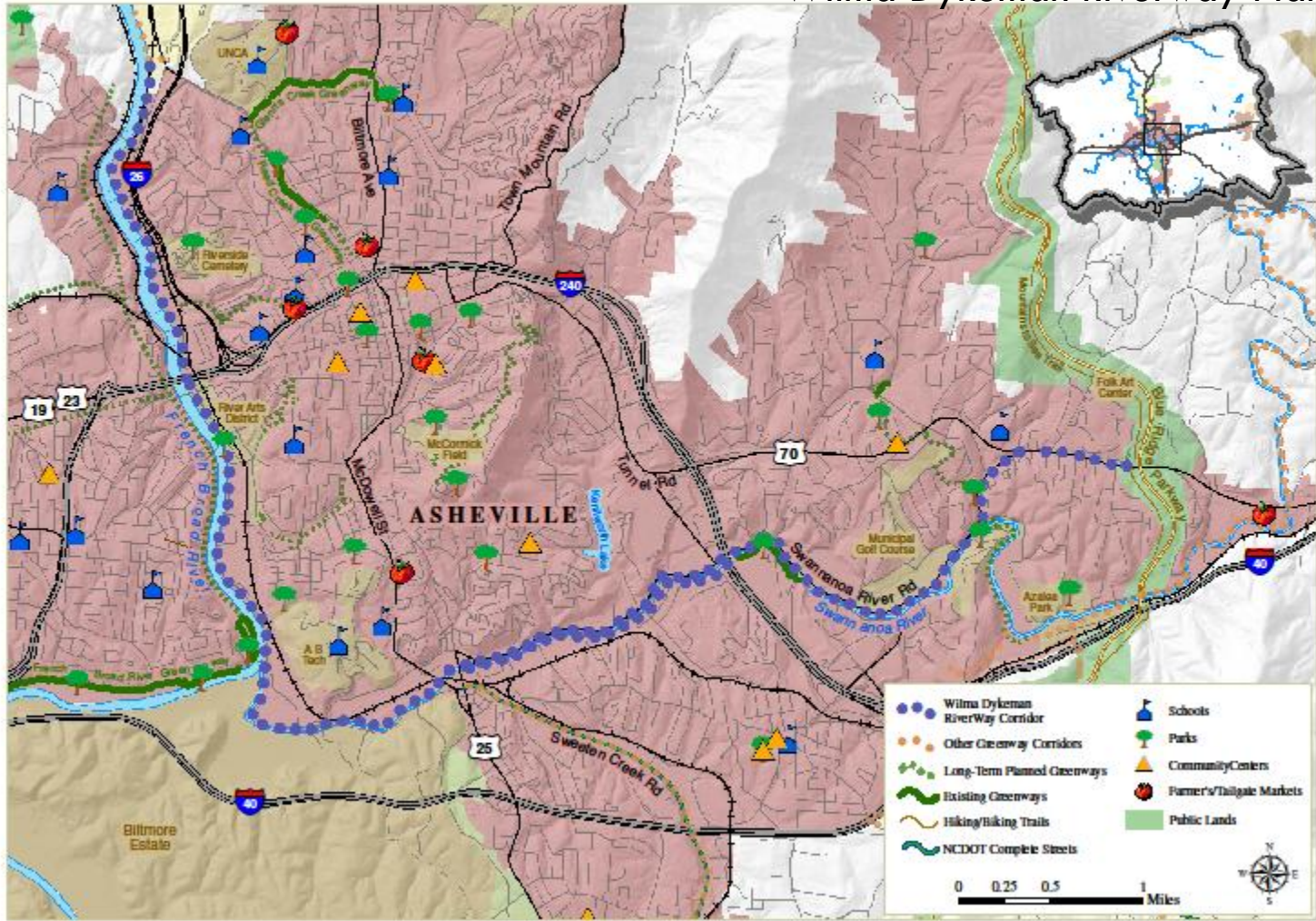
DRAFT



Central Quad

SW Quad

Wilma Dykeman Riverway Plan



Central Quad