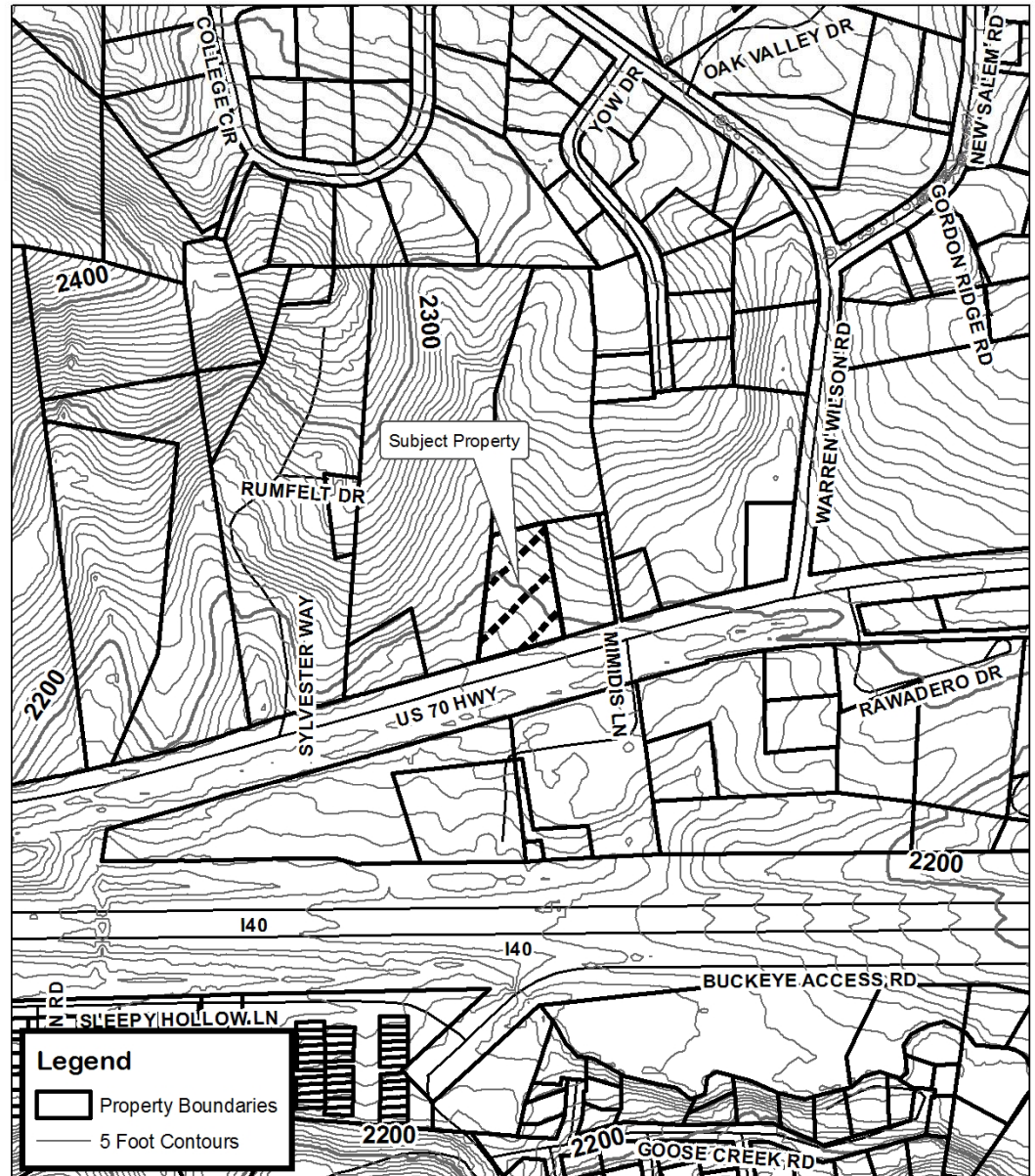
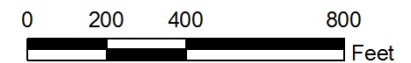


# Norris Max Clubb

- Request CS from R-1
- Staff Recommendation:
  - Approval
- Planning Board Recommendation:
  - Approval



**Norris Max Clubb  
Map Amendment**

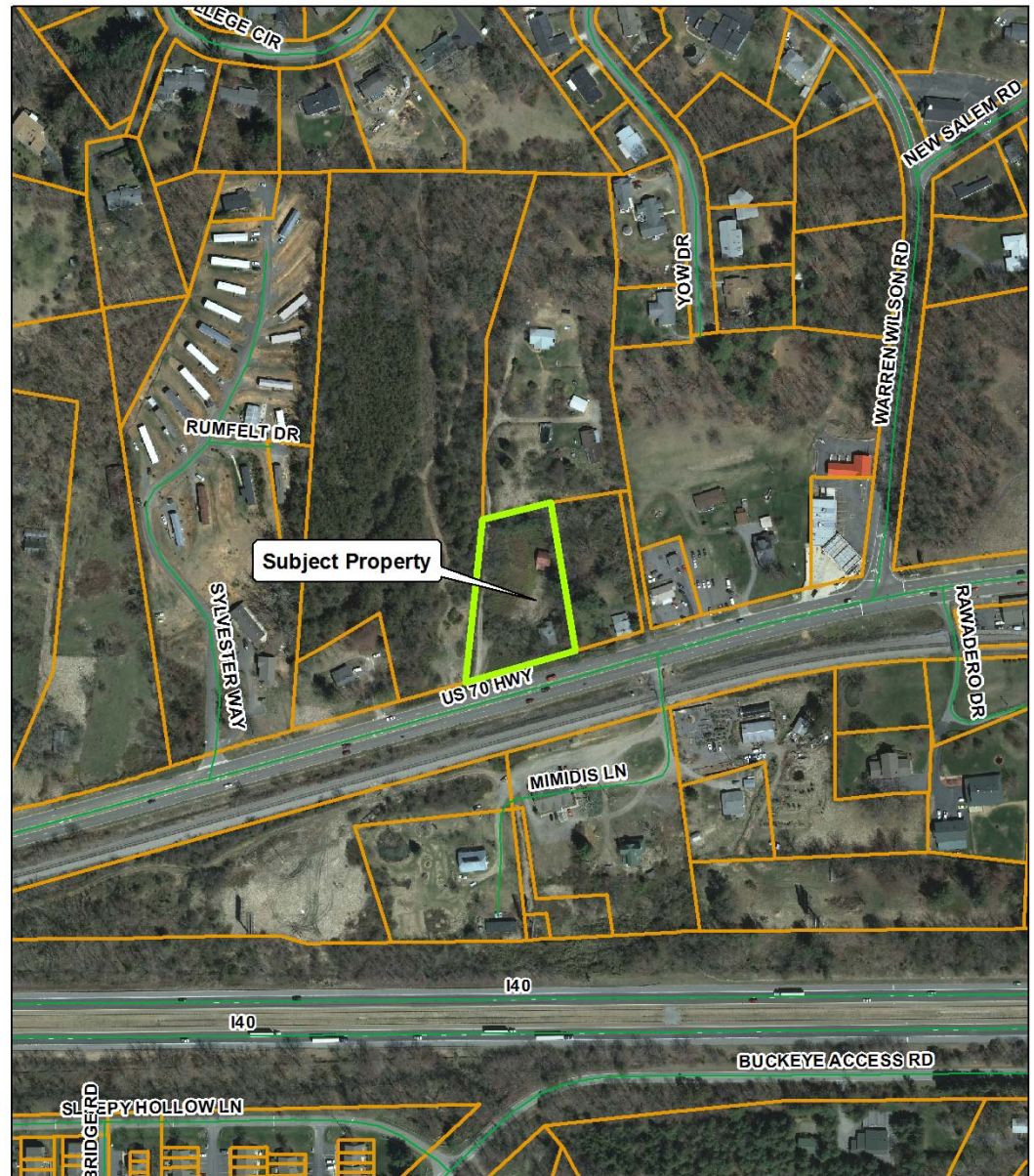


Property Size: 1.27 acres  
Application Date: November 8, 2011  
Planning Board Hearing Date: December 19, 2011

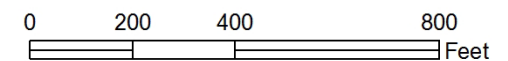
Created By: Buncombe County Planning  
Date: November 22, 2011

## Norris Max Clubb

- Request CS from R-1
- Staff Recommendation:
  - Approval
- Planning Board Recommendation:
  - Approval



**Norris Max Clubb  
Map Amendment**

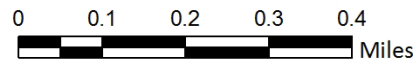
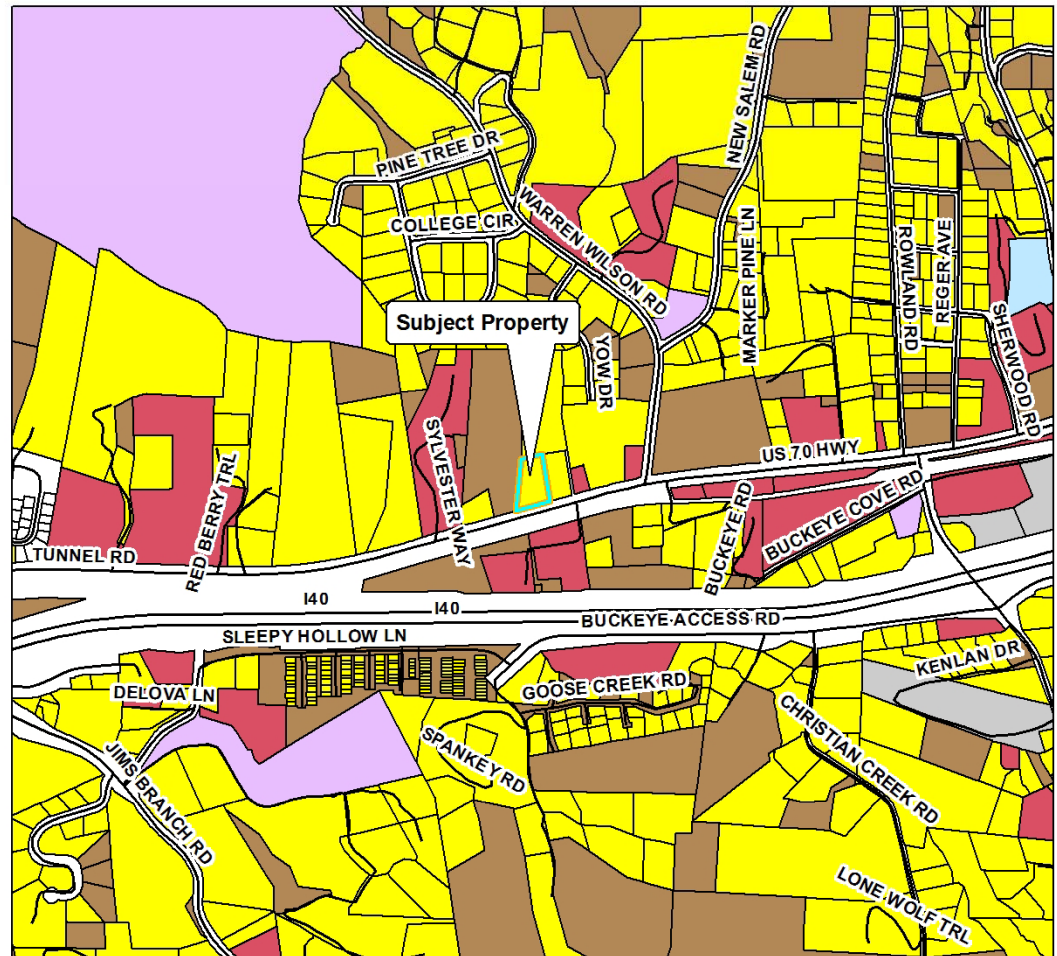


Property Size: 1.27 acres  
Application Date: November 8, 2011  
Planning Board Hearing Date: December 19, 2011

Created By: Buncombe County Planning  
Date: November 22, 2011

# Norris Max Clubb

- Request CS from R-1
- Staff Recommendation:
  - Approval
- Planning Board Recommendation:
  - Approval



## Norris Max Clubb Map Amendment



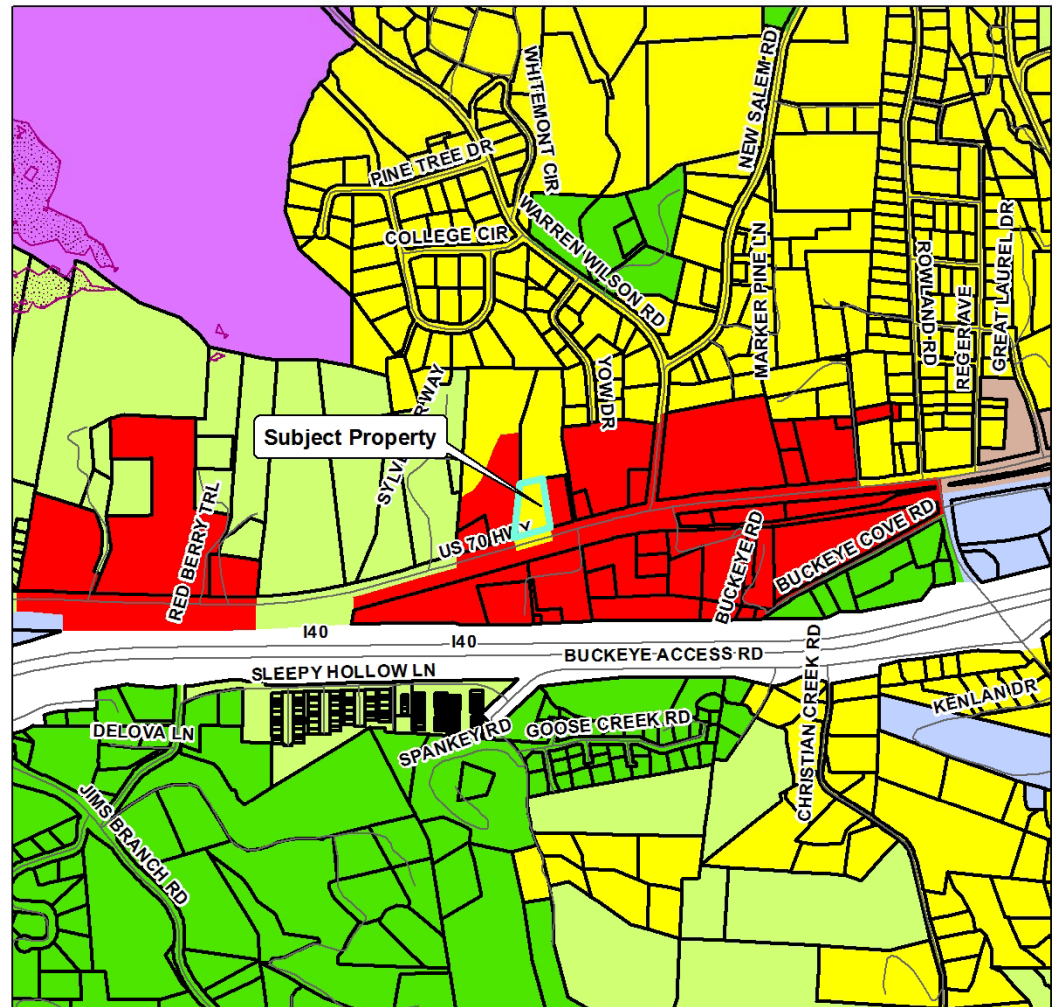
Property Size: 1.27 acres  
 Application Date: November 8, 2011  
 Planning Board Hearing Date: December 19, 2011

Created By: Buncombe County Planning  
 Date: November 22, 2011

Assessed Use	
<span style="color: green;">■</span>	Forestry, Conservation, Parks
<span style="color: lightgreen;">■</span>	Agricultural
<span style="color: magenta;">■</span>	Public Services
<span style="color: purple;">■</span>	Community Services
<span style="color: lightblue;">■</span>	Recreational, Entertainment
<span style="color: grey;">■</span>	Industry
<span style="color: red;">■</span>	Commercial
<span style="color: brown;">■</span>	Vacant Land
<span style="color: yellow;">■</span>	Residential

# Norris Max Clubb

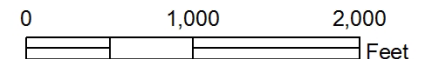
- Request CS from R-1
- Staff Recommendation:
  - Approval
- Planning Board Recommendation:
  - Approval



**Norris Max Clubb  
Map Amendment**



Zoning Districts		Zoning Overlays	
BDM	R-1	Blue Ridge Parkway Overlay	PS
CS	R-2	Protected Ridge Overlay	R-3
EMP	R-LD	Protected Ridge & Parkway	Steep Slope/High Elev.
NS		Steep Slope/High Elev. & Pkwy	
OU			



Property Size: 1.27 acres  
 Application Date: November 8, 2011  
 Planning Board Hearing Date: December 19, 2011

Created By: Buncombe County Planning  
 Date: November 22, 2011