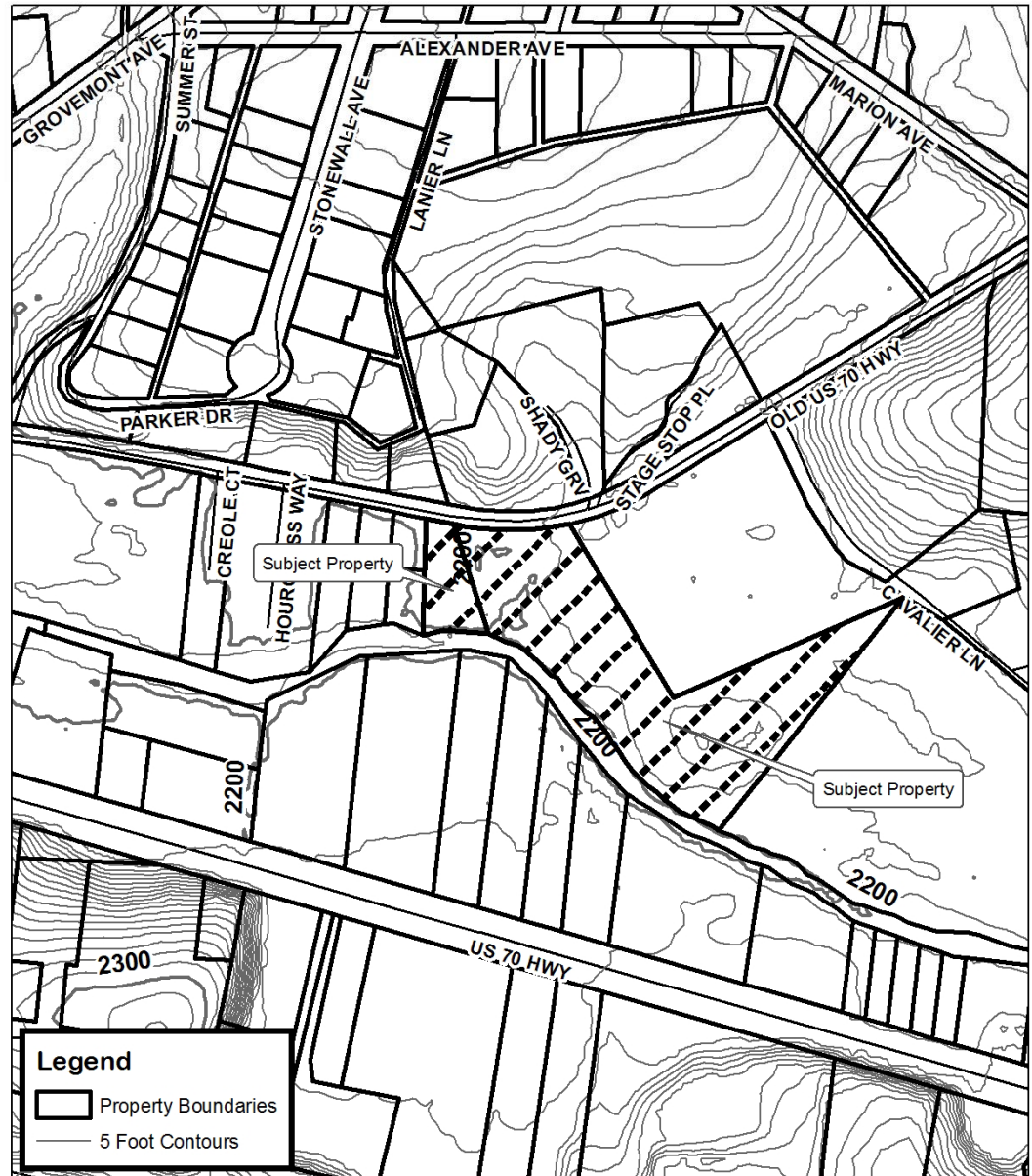
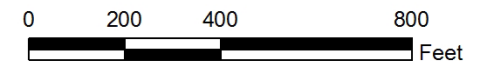


Richard Kubica

- Request NS from R-3
- Staff Recommendation:
 - Approval
- Planning Board Recommendation:
 - Approval



**Richard Kubica
Map Amendment**



Property Size: 5.53 acres
Application Date: May 12, 2011
Planning Board Hearing Date: June 20, 2011

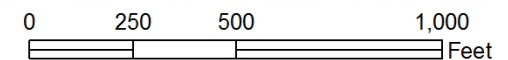
Created By: Buncombe County Planning
Date: May 12, 2011

Richard Kubica

- Request NS from R-3
- Staff Recommendation:
 - Approval
- Planning Board Recommendation:
 - Approval



**Richard Kubica
Map Amendment**

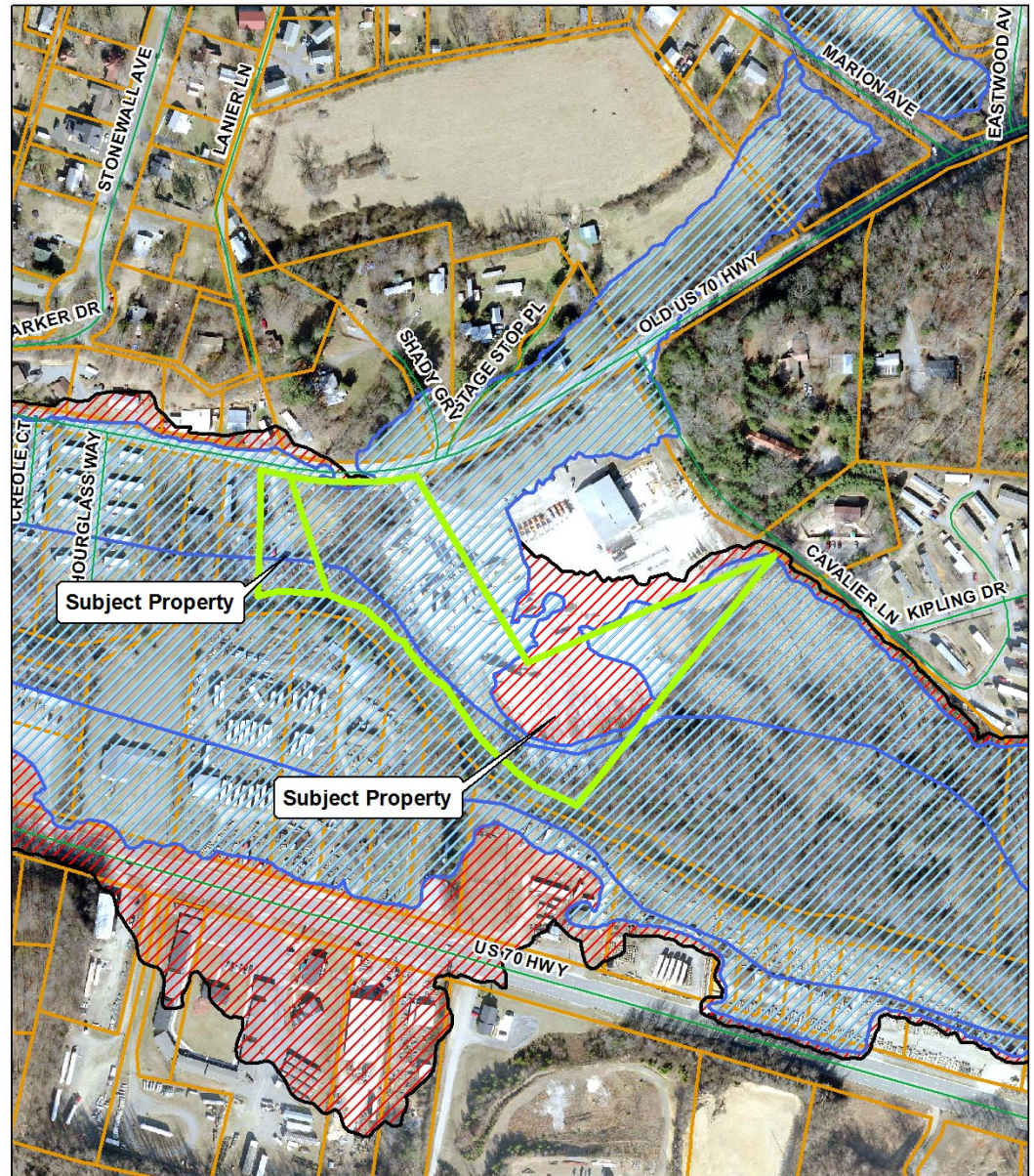


Property Size: 5.53 acres
Application Date: May 12, 2011
Planning Board Hearing Date: June 20, 2011

Created By: Buncombe County Planning
Date: May 12, 2011

Richard Kubica

- Request NS from R-3
- Staff Recommendation:
 - Approval
- Planning Board Recommendation:
 - Approval



**Richard Kubica
Map Amendment**



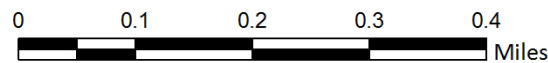
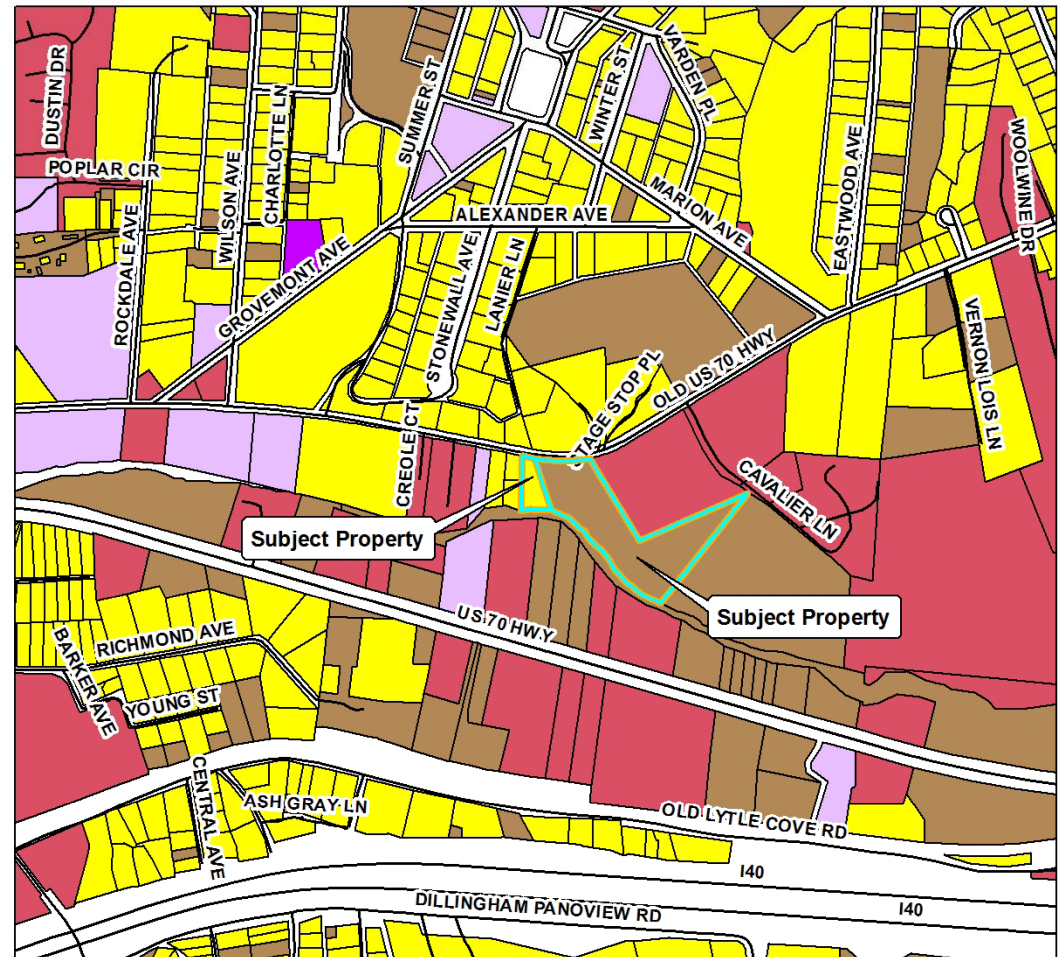
0 200 400 800 Feet

Property Size: 5.53 acres
Application Date: May 12, 2011
Planning Board Hearing Date: June 20, 2011

Created By: Buncombe County Planning
Date: May 12, 2011

Richard Kubica

- Request NS from R-3
- Staff Recommendation:
 - Approval
- Planning Board Recommendation:
 - Approval



Richard Kubica Map Amendment



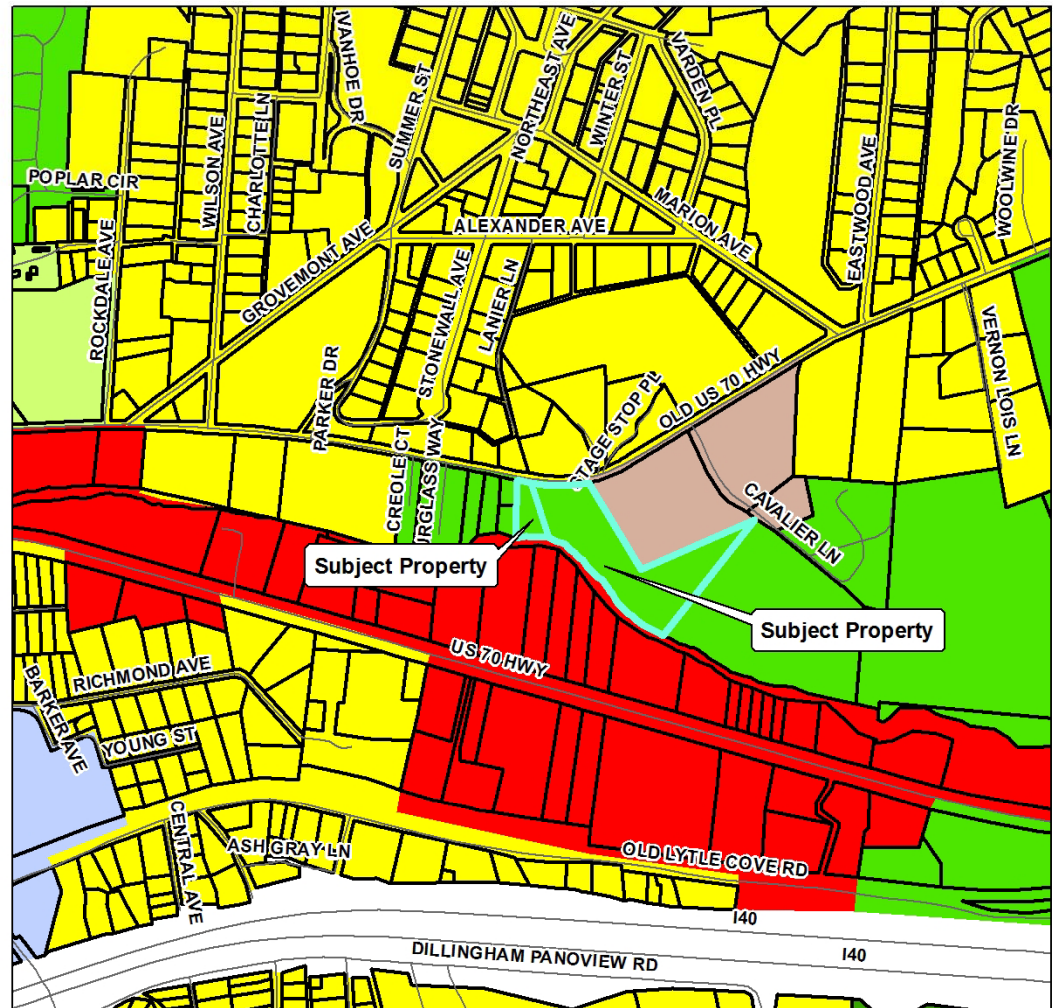
Property Size: 5.53 acres
Application Date: May 12, 2011
Planning Board Hearing Date: June 20, 2011

Created By: Buncombe County Planning
Date: May 12, 2011

Assessed Use	
	Forestry, Conservation, Parks
	Agricultural
	Public Services
	Community Services
	Recreational, Entertainment
	Industry
	Commercial
	Vacant Land
	Residential

Richard Kubica

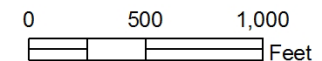
- Request NS from R-3
- Staff Recommendation:
 - Approval
- Planning Board Recommendation:
 - Approval



**Richard Kubica
Map Amendment**



Zoning Districts		Zoning Overlays	
BDM	R-1	Blue Ridge Parkway Overlay	Protected Ridge Overlay
CS	R-2	Protected Ridge & Parkway	Steep Slope/High Elev.
EMP	R-3	Steep Slope/High Elev. & Pkwy	
NS	R-LD		
OU			



Property Size: 5.53 acres
 Application Date: May 12, 2011
 Planning Board Hearing Date: June 20, 2011

Created By: Buncombe County Planning
 Date: May 12, 2011