

Wade A. Watkins

Map 1: Topography

Requested Zoning:

- Residential District R-3

Current Zoning:

- Single Family Residential District R-1

Staff Recommendation:

- Approval

Planning Board

Recommendation:

- Approval



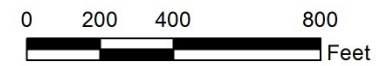
Wade A. Watkins Map Amendment

Case Number: ZPH2013-00021

Approximate Property Size: 1.3 acres

Application Date: August 8, 2013

Planning Board Hearing Date: September 9, 2013



Created By: Buncombe County Planning
Date: August 26, 2013

Wade A. Watkins

Map 2: Aerial

Requested Zoning:

- Residential District R-3

Current Zoning:

- Single Family Residential District R-1

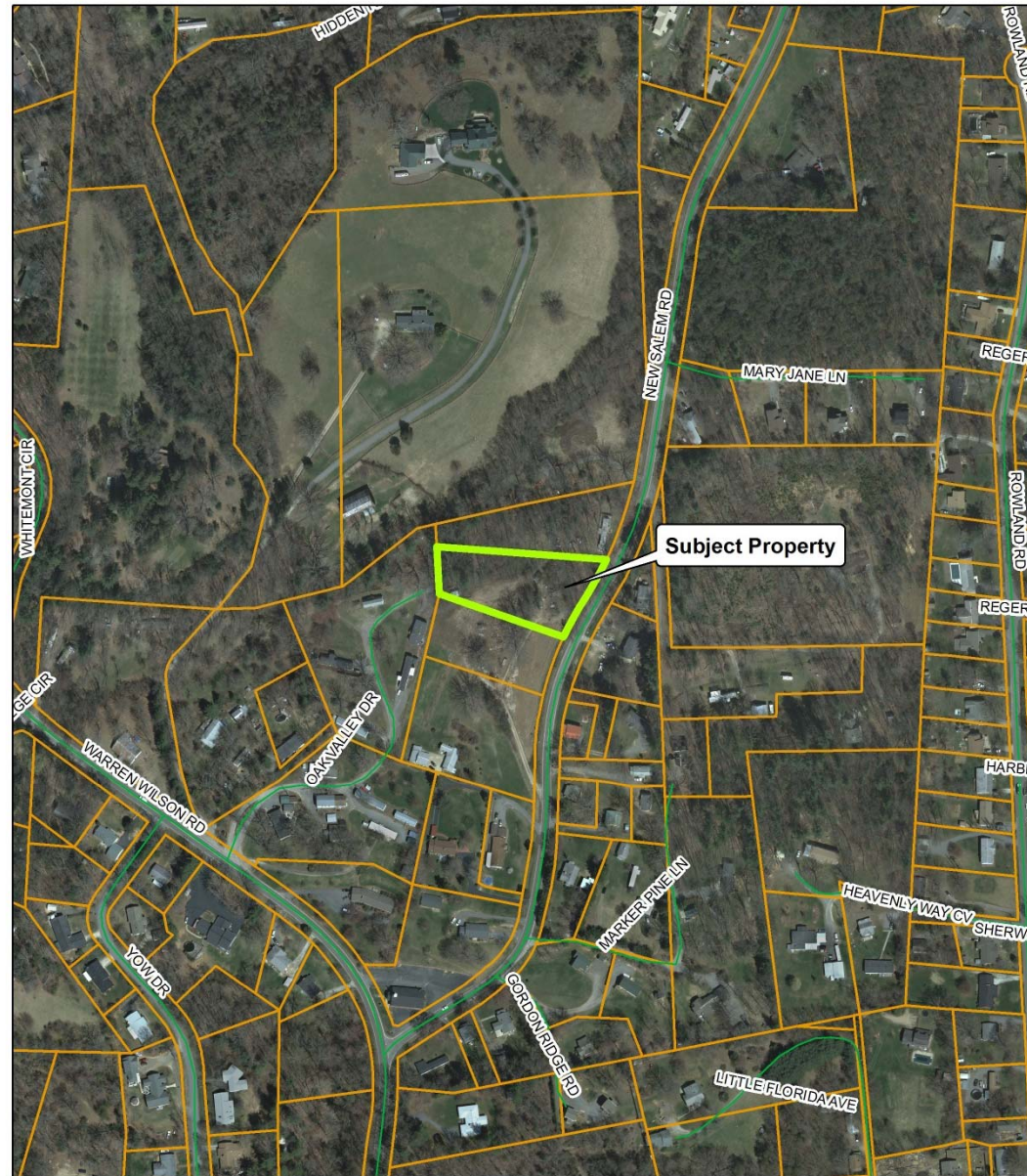
Staff Recommendation:

- Approval

Planning Board Recommendation:

Recommendation:

- Approval



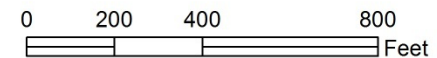
Wade A. Watkins Map Amendment

Case Number: ZPH2013-00021

Approximate Property Size: 1.3 acres

Application Date: August 8, 2013

Planning Board Hearing Date: September 9, 2013



Created By: Buncombe County Planning
Date: August 23, 2013

Wade A. Watkins

Map 3: Zoning

Requested Zoning:

- Residential District R-3

Current Zoning:

- Single Family Residential District R-1

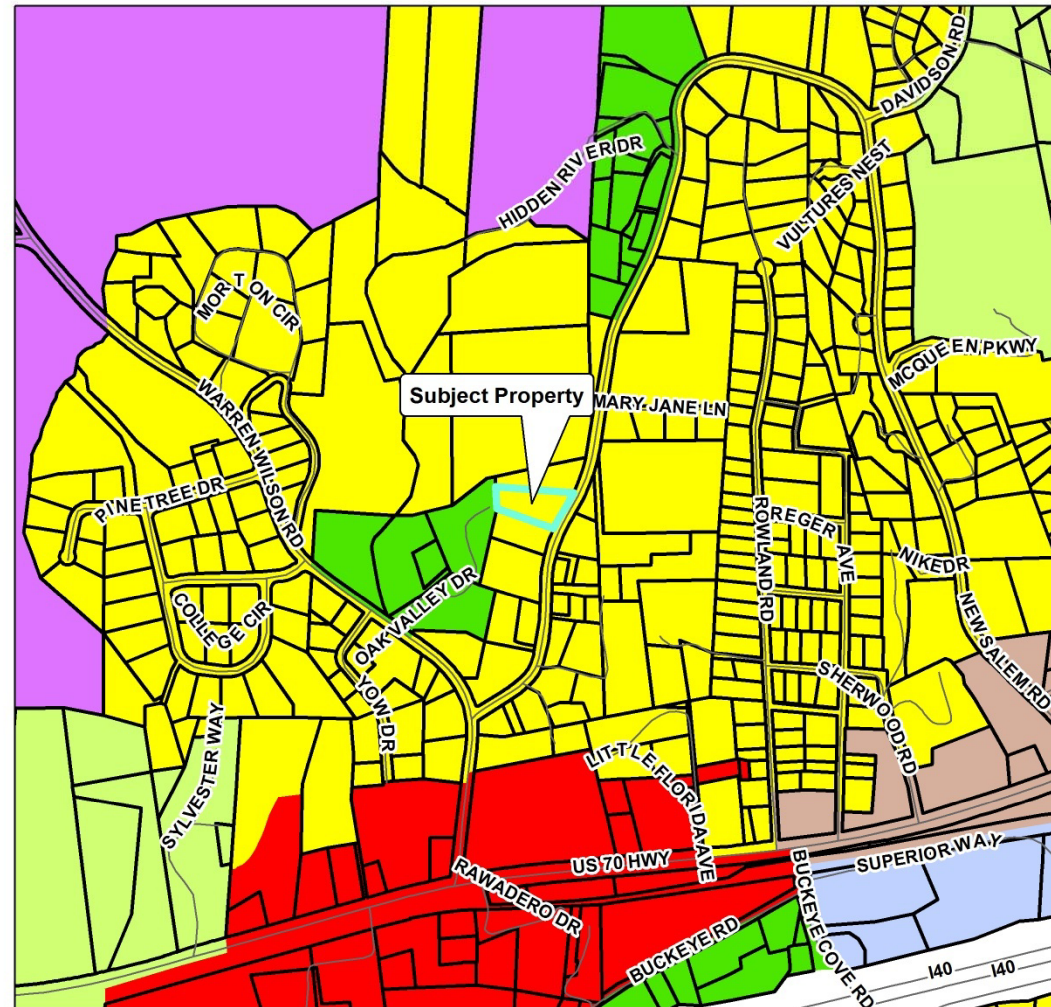
Staff Recommendation:

- Approval

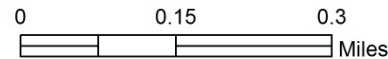
Planning Board Recommendation:

Recommendation:

- Approval



**Wade A. Watkins
Map Amendment**



Zoning Districts		Zoning Overlays	
BDM	R-1	Blue Ridge Parkway Overlay	Protected Ridge Overlay
CS	R-2	Protected Ridge & Parkway	Steep Slope/High Elev.
EMP	R-3	Steep Slope/High Elev. & Pkwy	
NS	R-LD		
OU			

Case Number: ZPH2013-00021
Approximate Property Size: 1.3 acres
Application Date: August 8, 2013
Planning Board Hearing Date: September 9, 2013



Created By: Buncombe County Planning
Date: August 27, 2013